



***CALIFORNIA INTERSCHOLASTIC FEDERATION  
SOUTHERN SECTION (CIF-SS)***

***HISTORICAL LOCATIONS OF STATE CIF OFFICES***

#144 Historical tidbit.  
Dr. John S. Dahlem Voluntary Historian



***LOCATIONS OF STATE CIF OFFICE***

The California Interscholastic Federation (CIF) was founded on March 28, 1914. For the first 25 years of the organization there was no formal home of the CIF. Work was done by the Executive Directors (Secretary-Treasurer) at their home sites, usually high schools. With the creation of the CIF Protection Fund in 1939, it became necessary to have a CIF office. From 1939 to 1954, the first office of the CIF was still located at a school site. Beginning August 1, 1954, the CIF rented space for the first time and had a State office not located at a high school. The offices were generally located near the home area of the Executive Directors.

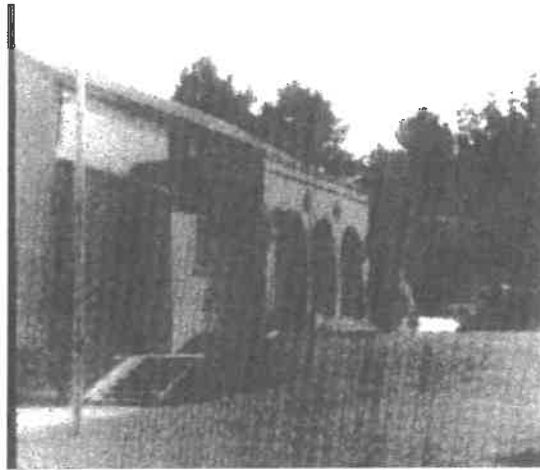
***CIF CHIEF EXECUTIVE OFFICERS***

E. W. Barnhart	July 1914 - February 1915
C.L. Biedenbach	February 1915 - December 1937
A. B. Ingham	December 1937 - June 1955
William Russell	July 1955 - June 1980
Thomas E. Byrnes	1980 - 1995
Jack J. Hayes	1995 - 2001
Marie M. Ishida	2001 - 2012
Roger L. Blake	2012 - 2019
Ron W. Nocetti	2019 - current

*Pacific Grove High School*

615 Sunset Drive  
Pacific Grove, CA 93950

1939-1954



*Berkeley*

1521 A Shattuck Ave  
Berkeley

1954-1968

1954

2013 photo



The Home of the C.L.F. and C.I.F.P.F. since August 1, 1954—  
1521A Shattuck Avenue, Berkeley

**Inglewood** (Southern Office)

525 East Hyde Park Place  
Inglewood, CA 90302

1958

**2013 photo**



**Santa Barbara** (offices merged)

470 South Patterson Avenue  
Santa Barbara, CA 93105

1968

**1971**



**2013 photo**



Picture taken at the CIF office in Santa Barbara in 1971.

*l to r: Bill Russell, Commissioner—1955 to 1980; George Miskulin, President—1972 to 1974; Bryce Schurr, President—1966 to 1968; Edwin Hendrix, President—1969 to 1971; Delmar Marshall, Council Member—1945 to 1957, Assistant Commissioner—1958 to 1971; Robert E. Stewart, Administrative Assistant—1967 to 1980, Associate Commissioner—1981 to 1982; Fred Greenough, Superintendent of Schools—Santa Barbara County.*

**Fullerton**

2282 Rosecrans Ave.  
Fullerton, CA 92633

1981

In 1981, the CIF Protection Fund was closed and the office moved to Fullerton. Unfortunately, the files for the 1939-1981 CIF Protection Fund and all of the old CIF historical files were destroyed in a fire on an off-site location where the files were housed.



**La Mirada**

16700 Valley View  
Suite #130  
La Mirada, CA 90639

1991

**Parkway La Mirada Complex**



San Rafael

664 Las Gallinas  
San Rafael, CA 94903

1996



Margaret Davis, CIF Associate Executive Director, also had an office at Harper School  
425 East 18<sup>th</sup> Street, Costa Mesa, CA 92627



Oakland

333 Hegenberger Road  
Suite #511  
Oakland, CA 94621

2003



Alameda

1320 Harbor Bay Parkway  
Suite #140  
Alameda, CA 94502

2005



Sacramento

4658 Duckhorn Drive  
Sacramento, CA 95834

2009





From the History of the California Interscholastic Federation by William W. Russell

In 1981 the CIF moved its office and extensive files, containing the records of the CIF and the CIF Protection Fund from the beginnings of the CIF in 1914 and the Protection Fund in 1939 to Fullerton. Minutes of all the meetings and records of activities of both organizations were in the files. The office space required for the new State CIF office was considerably less than that occupied in Santa Barbara for both CIF and CIFPF. Space was rented in Fullerton, and the older files and records were placed in storage in Fullerton at another location. A disastrous fire at the location where the old files and records for CIF and CIFPF were stored destroyed all of the CIF and CIFPF records.

Fortunately, a staff member previously made copies of all the Minutes of State CIF meetings from 1914 to 1980. When he learned of the fire in Fullerton, he made copies for the State CIF office.

