

**CIF Southern Section
Softball Advisory Committee
January 16, 2019**

RULES CHANGES FOR 2019

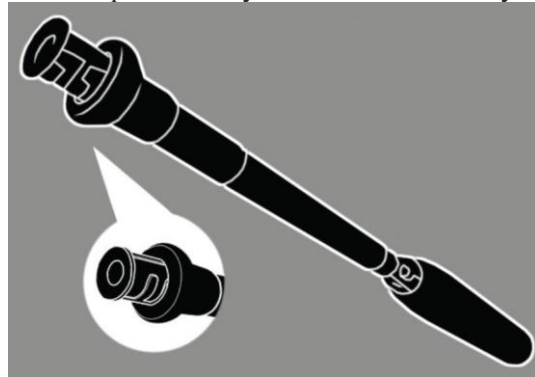
1. Rule 1-1-7: Field and Equipment

- ┌ Media shall be prohibited from being in live-ball areas.
- ┌ The home team or game management may designate an area for the media in dead-ball territory.
 - The designation must be before the start of the game.
 - The designated area will be dead ball territory for the entire game whether it is occupied or not.
 - The intent of the rule is for the media area to be set outside of the playing area.



2. Rule 1-5-2a: Field and Equipment

- ┌ A softball bat is permitted to have an adjustable knob.
 - The knob must be permanently fastened to the bat by the manufacturer.



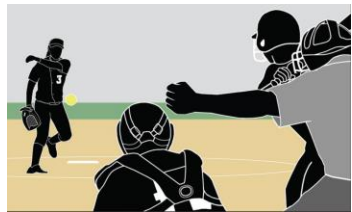
3. Rule 1-8-4: Field and Equipment

- ┌ An eye shield may be worn attached to a defensive player's face/head protection, but it must be constructed of a molded, rigid material that is clear and permits 100 percent (no tint) allowable light transmission.
 - a. Must be either installed when purchased or can be caught as a kit from the manufacturer.

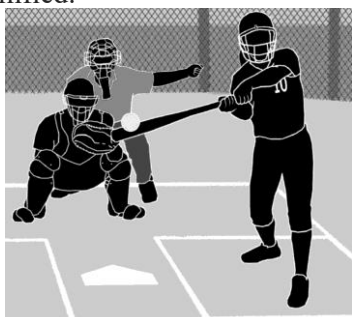


4. Rule 6-1-1; 6-1-2; 6-1-3; 6-1-4; 6-2-1; 6-2-7: Pitching

- ┌ When an illegal pitch is declared by the umpire, the batter is awarded a ball. Previously, the batter was awarded a ball and all base runners were also awarded one base without liability to be put out.
- ┌ The penalty to allow the advancement of runners when an illegal pitch is called has been removed.
- ┌ The intent of an illegal pitch in softball is to deceive the batter, and only the batter should receive an award when an illegal pitch occurs.



- **Exception 1:** An illegal pitch remains a delayed-dead ball. If there is an illegal pitch and the batter reaches first base safely and each other runner advances at least one base, the illegal pitch is nullified.



- **Exception 2:** As before under the rules, if the batter does not reach first base safely or any base runner fails to advance at least one base, the coach of the team at bat shall have the option of the result of the play or the penalty of the illegal pitch, which is a ball awarded to the batter.



- **Exception 3:** If the batter is hit by an illegal pitch outside the strike zone the batter is awarded first base but there is no longer a one-base award to each base runner.
- **Exception 4:** If ball four is awarded on an illegal pitch, the batter is awarded first base but there is no longer a one-base award to each base runner.

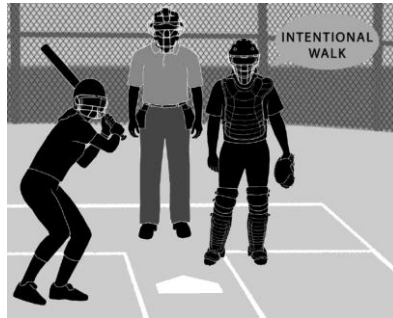


MAJOR EDITORIAL CHANGES FOR 2019

1. Rule 2-65-2: Intentional Walk

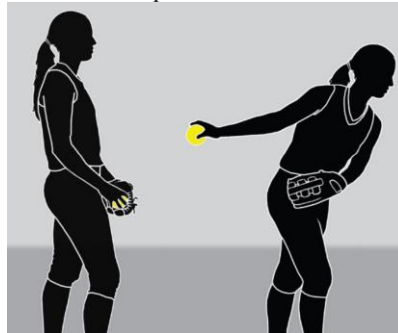
└ For the purposes of an appeal:

- The intentional walk is considered a time at bat and an appeal of the previous play cannot be made following the intentional walk.
- When an intentional walk is awarded by the umpire, it is considered the same as throwing a pitch.
- Clarifies that there can be no appeal of a play that occurred prior to the umpire awarding an intentional walk.



2. Rule 6-1-2a; 6-1-2b: Pitching

└ Clarifies that the pitch starts when the pitcher's hands are separated after they have come together while the pivot foot is on or partially on top of the pitcher's plate. Any step back with the non-pivot foot must begin before the start of the pitch.



3. DP/FLEX Appendix H

└ A new appendix was created for quick reference regarding the DP/FLEX rule

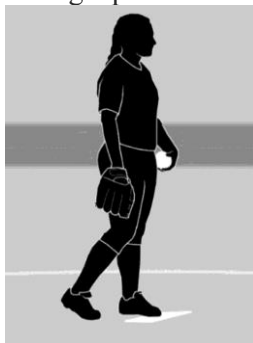
NFHS Softball - DP/FLEX Simplified REMINDERS:

- 1) The DP can never be on DEFENSE ONLY.
- 2) The FLEX player can never be on OFFENSE ONLY.
- 3) The DP and FLEX player can never be on offense at the same time.
- 4) The STARTER and the SUBSTITUTE cannot be in the game at the same time.
- 5) The starting DP and FLEX player have one re-entry just as any other player.
- 6) Once the game is started with the DP/FLEX positions in the lineup, those positions are available for the entire game.
- 7) The penalty for illegal re-entry of the DP or FLEX player is always restriction to the bench/dugout.
- 8) If the player is on offense, she is called out. If the player is on defense, the team on offense may have the choice of taking the result of the play or accepting the penalty.

POINTS OF EMPHASIS FOR 2019

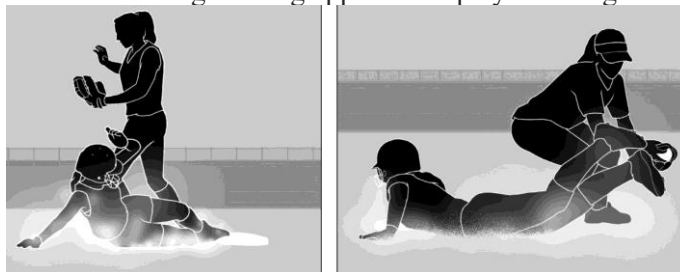
1. Simulate Taking a Sign

- └ The actual signal can be taken while on the pitching plate or while standing behind the pitcher's plate.
- └ It may be taken from the catcher or coach; it may be a hand signal, a verbal call or may be obtained from looking at her wristband.
- └ However, she must take a position on the pitcher's plate with the hands separated and simulate taking a signal from the catcher.
- └ If the pitcher does not pause after stepping onto the pitcher's plate to simulate taking a signal prior to bringing her hands together, an illegal pitch should be called.



2. Proper Technique When Sliding

- └ Coaches are responsible for teaching players proper sliding techniques and how to execute legal slides as defined in Rule 2-52. Proper sliding techniques help reduce potential injuries.
- └ One of a coaches' responsibilities is to help reduce risk and injury to players whenever possible. This includes teaching proper sliding techniques as well as educating their players on executing a legal slide (Rule 2-52).
- └ Ensuring their players utilize proper technique when sliding will help reduce the potential injuries seen when a slide is performed. Ensuring that the slide is performed legally will also reduce the risk to the defender when a tag is being applied to a player sliding into a base.



3. Head Coach Listed On Lineup Card

- └ It is a best practice that the head coach list his or her name on the lineup card submitted at the pregame conference. This will assist both the umpire and the other team if game-related communications are required.



OTHER SOFTBALL TOPICS FOR 2019

1. Glitter & Eye Black

- └ Glitter is not covered in the book so it's allowed.
 - Unless it is deemed dangerous by the umpire(s).

2. Noisemakers

- └ It's a state association's decision.
 - Note: NFHS rules govern use of protective equipment by a player/student.

3. NFHS Questionnaire

- └ Please complete when the link is sent to you.

4. Easton Ghost

- └ What certifications does the Ghost Double Barrel Fastpitch bat have?
 - The 2017-18 Ghost bat is ASA/USA/ISF/HIGH-SCHOOL (blue graphics) and USSSA/NSA/ISA (gold graphics) certified.

