

Keeping Good Coaches

Rich Shearer - AP/AD Citrus Hill HS

Chris Calderwood - AP/AD Rancho Mirage HS

Data

C I F S S A D S u m m i t , 2 0 1 8

Data



1986

Data

1986



**Over 95% of
coaches are
teachers**

Data



Now...

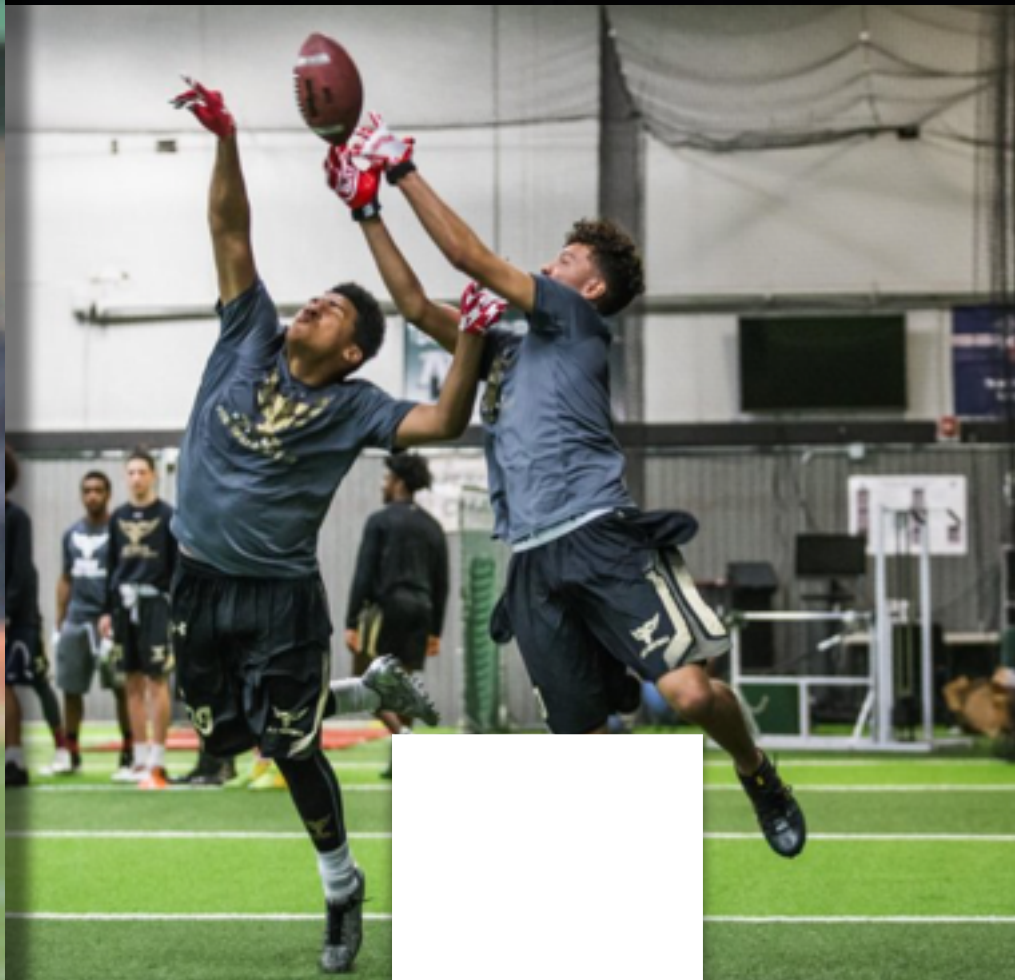
**Only 28% of
coaches are
teachers**

**What's the reality
at your school?**

**How many of your
coaches have YOU hired?**

WHY?

C I F S S A D S u m m i t , 2 0 1 8



CLUB!



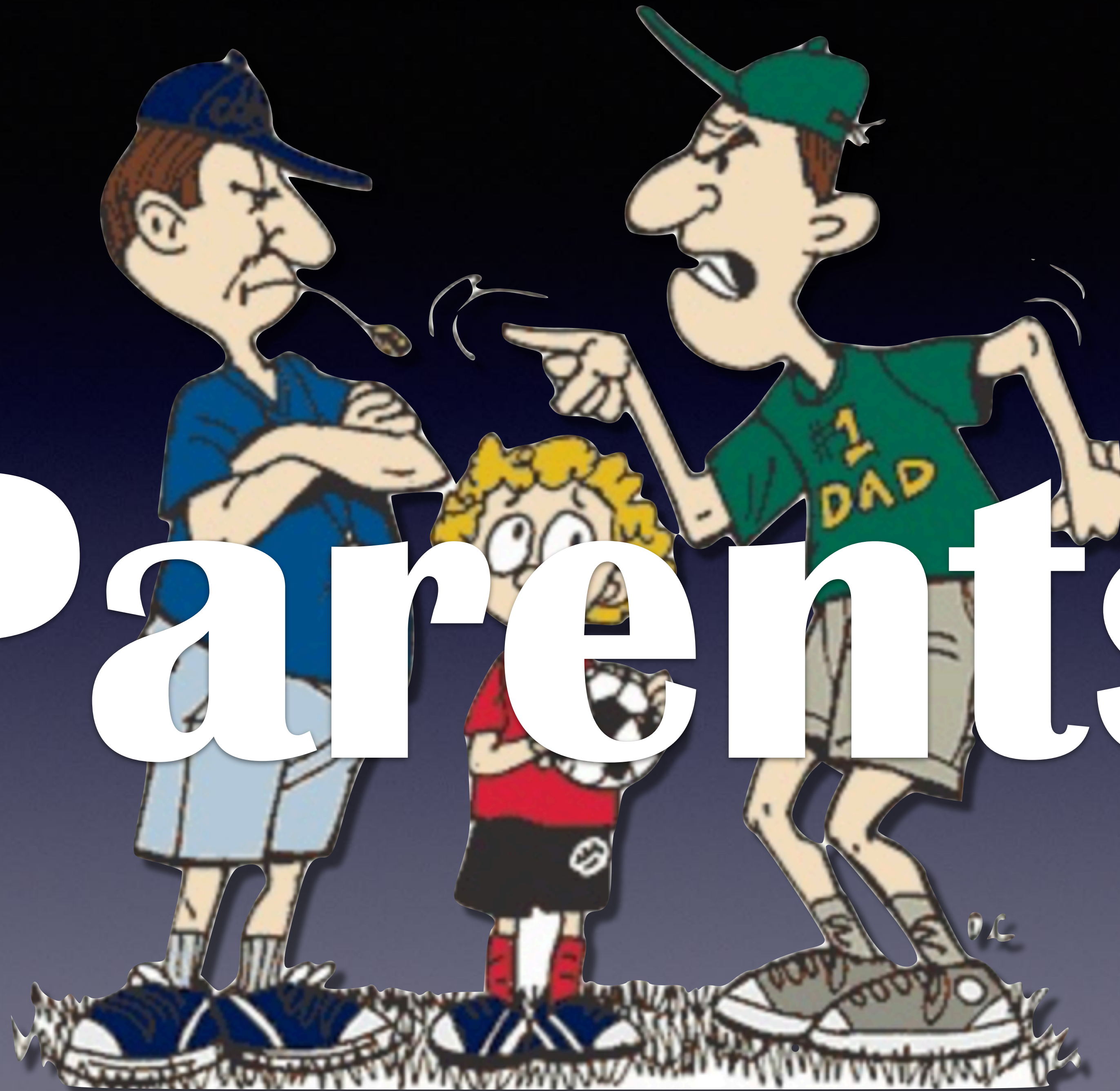
Compensation



Work Load



Parents



Admin Support



Two Types of Coaches



Two Types of Coaches





***All day presence**

***Role model**

***Site leader**

***Recruit on site**

***Communication**

How do we keep them?



- *Teaching assignment**
- *Game/Practice Schedules**
- *Extra compensation**





Walk-on Coaches





C I F S S A D S u m m i t , 2 0 1 8











Do Coaches Want to Work for Me?

**Would I Want to
Work for Myself?**

A cartoon illustration of Homer Simpson from 'The Simpsons'. He is shown from the chest up, wearing his signature white shirt and blue pants. He has a thoughtful expression, with his right hand resting on his chin and his index finger pointing upwards. His eyes are wide and looking upwards. The background is a dark blue gradient.

**Would I Want to
Work for Myself?**

A cartoon illustration of Homer Simpson, a yellow-skinned man with a large nose and wide eyes, wearing a white shirt and blue pants. He is shown from the chest up, with his hands clasped in front of him.

**Rich Shearer -
AP/AD Citrus Hill
HS**

**Chris Calderwood
- AP/AD Rancho
Mirage HS**