

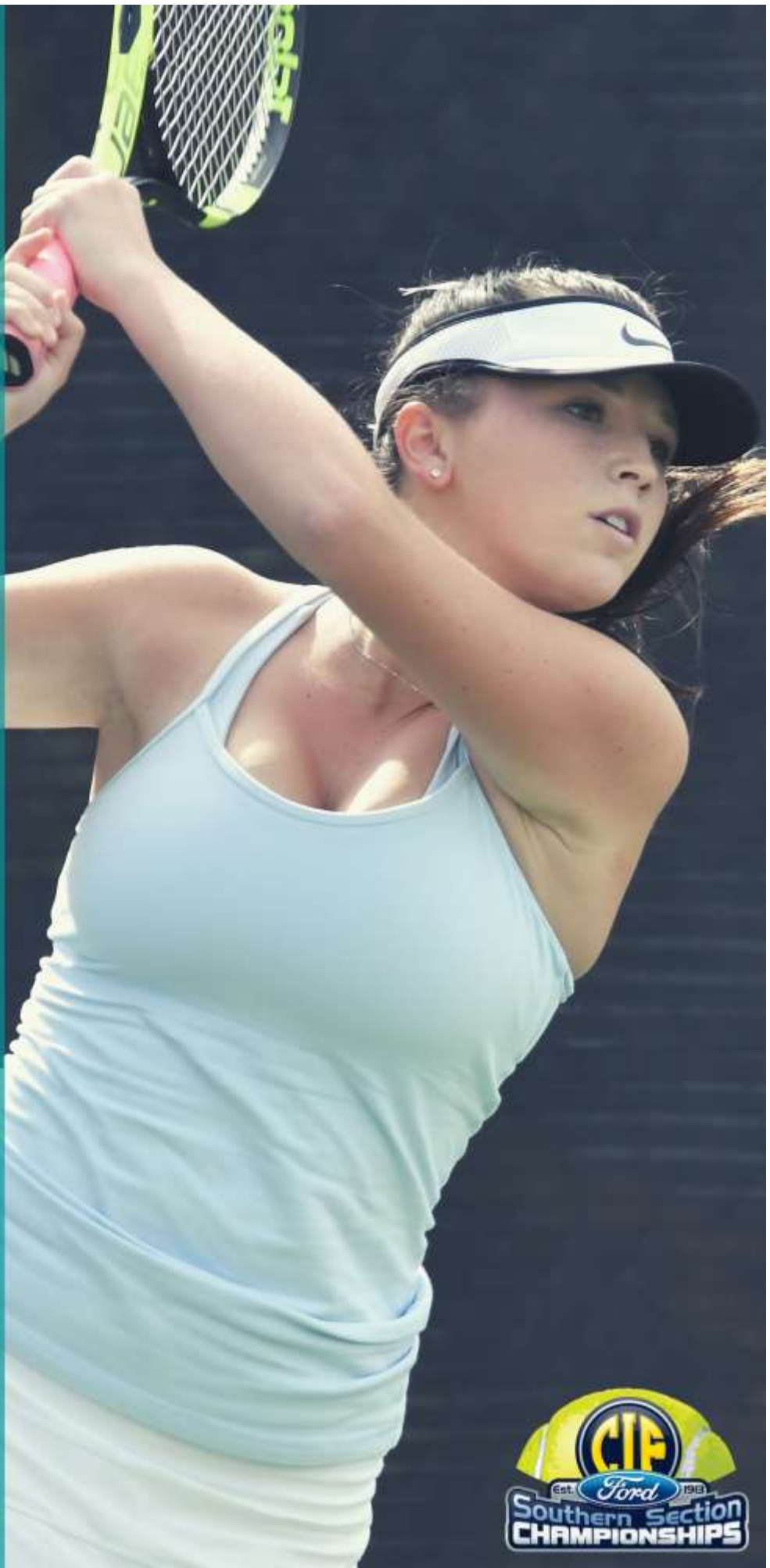
Playoff  
Bulletin

2021-  
2022

GIRLS INDIVIDUAL  
TENNIS

CIF-SS GIRLS TENNIS  
ASSISTANT COMMISSIONER:  
RAINER WULF

PROGRAM COORDINATOR:  
KRISTINE TROST





# MUSCLES. SPEED. AGILITY. SMARTS.

OUR VEHICLES. OUR ATHLETES.



THE SOUTHERN CALIFORNIA FORD DEALERS  
PROUDLY SUPPORT SO CAL HIGH SCHOOL ATHLETICS.





## 2021-2022 GIRLS INDIVIDUAL TENNIS PLAYOFF BULLETIN

### Table of Contents

CALENDAR PLAYOFF DATES – INDIVIDUAL TENNIS .....	5
LOCATION OF SECTIONALS – Monday, November 22, 2021 .....	5
RELEASE SCHEDULE .....	6
BALL PROGRAM MEMO .....	7
PLAYOFF INFORMATION .....	8
A. CIF SOUTHERN SECTION GIRLS INDIVIDUAL TENNIS QUALIFICATIONS.....	8
B. PLAYOFF TOURNAMENT RULES.....	8
C. SITE MAPS.....	11
D. SUPERVISION OF ATHLETES/CONDUCT .....	14
E. PLAYOFF/CHAMPIONSHIPS – Post Season Awards .....	16



OFFICIAL TENNIS BALL OF  
THE CIF SOUTHERN SECTION

# MADE FOR WINNERS

INSPIRED BY TOUR ATHLETES  
DEVELOPED BY PENN ENGINEERS

***Penn.***

## CALENDAR PLAYOFF DATES – INDIVIDUAL TENNIS

---

- **INDIVIDUAL: 2021-2022 CIF SOUTHERN SECTION FORD GIRLS INDIVIDUAL TENNIS PLAYOFF DATES**

The 2021-2022 CIF Southern Section Ford Girls Individual Tennis Championships, consisting of competition in both singles and doubles, shall be conducted on:

**Monday, November 22, 2021** - (Prelims at 5 different sites)

Each school will be assigned to one of the five scheduled sectional tournament sites. Each league may enter two players in singles and two doubles teams (with an alternate available should a qualifier not be able to participate).

**LOCATION OF SECTIONALS – Monday, November 22, 2021**

(There may or may not be warm up courts available. Check with site management ahead of time.)

**1 \* CATE HIGH SCHOOL  
& CARPINTERIA HIGH SCHOOL**

Cate High School  
1960 Cate Mesa Road  
Carpinteria, CA 93013

**2 LAKEWOOD TENNIS CENTER**

4212 Club House Drive  
Lakewood, CA 90712

**3 MARINA HIGH SCHOOL**

15871 Springdale Street  
Huntington Beach, CA 92649

**4 WHITTIER NARROWS TENNIS CENTER**

1202 North Potrero Ave  
South El Monte, CA 90712

**5 ANDULKA PARK TENNIS CENTER**

5051 Chicago Ave  
Riverside, CA 92057

- Each coach should carefully review the information pertaining to the Sectional to which the school has been assigned and make certain players report at the designated time and place. Transportation is not provided to alternate/additional courts. Please allow sufficient travel time. **IF THERE IS TO BE ANY CHANGE DUE TO INJURY, ILLNESS, ETC., IN A LEAGUE'S ENTRY, YOUR LEAGUE COORDINATOR MUST CONTACT THE CIF-SS OFFICE NO LATER THAN 10 A.M. FRIDAY, November 19, 2021. AFTER THAT DATE, THERE WILL BE NO ALTERNATES ALLOWED.**

**Wednesday, December 1, 2021 (Round of 32) – Whittier Narrows Tennis Center**

Check-in: 8:30 am -- Game time: 9:00 am

Whittier Narrows Tennis Center (NO WARM UP COURTS AVAILABLE)

1202 North Potrero Ave

South El Monte, CA 91733

(626) 442-7358

Tournament Manager: Bob Walton, (760) 861-8869

- The lowest seeded 8 singles players and 8 doubles teams advancing from the 5 sectional tournaments held on Monday, November 22, 2021, based upon CIF-SS Tennis Advisory Committee seedings, will play in the **Round of 32** on Wednesday December 1, 2021 at Whittier Narrows Tennis Center (8:30 am check-in). The winners of these matches will move on to the **Round of 16** to be played at the Whittier Narrows Tennis Center on Wednesday, December 1, 2021. (see note below)

**You must check the CIF-SS website on MONDAY, November 29, 2021 after 10:00 am to see if you are one of the 8 singles or 8 doubles that will play in the Round of 32 at 8:30 am on Wednesday, December 1, 2021 at Whittier Narrows Tennis Club.**

**Wednesday, December 1, 2021 (Round of 16, Quarterfinals) – Whittier Narrows Tennis Center**

Check in: 10:30 a.m. -- Game time: 11:00 a.m.

Whittier Narrows Tennis Center (NO WARM UP COURTS AVAILABLE)

1202 North Potrero Ave

South El Monte, CA 91733

(626) 442-7358

Tournament Manager, Bob Walton, (760) 861-8869

**Thursday, December 2, 2021 (Semis, Finals) – Whittier Narrows Tennis Center**

Check in: 10:30 a.m. -- Game time: 11:00 a.m.

Whittier Narrows Tennis Center (NO WARM UP COURTS AVAILABLE)

1202 North Potrero Ave

South El Monte, CA 91733

(626) 442-7358

Tournament Manager, Bob Walton, (760) 861-8869

## RELEASE SCHEDULE

---

On **Tuesday, November 16, 2021** after 3:00 pm, an announcement/special bulletin will be posted on our website at [www.cifss.org](http://www.cifss.org). Your player(s) will be assigned to one of five sectional locations. The location your player(s) has been assigned to will be listed along with start times and information regarding the Individual Tennis Championship in this special bulletin. The FIVE sectionals will be held on Monday, November 22, 2021.

# BALL PROGRAM MEMO

---



## OFFICIAL BALL PROGRAM 2021-2022

### Official Ball per sport:

Baseball:	<b>Rawlings CIF-SS</b> <b>Rawlings RCIF-SS</b>	Must be CIFSS/NOCSAE stamped ball; not an alternative Rawlings ball Must be CIFSS/NOCSAE stamped ball; not an alternative Rawlings ball
<i>*Boys Basketball:</i>	<b>Wilson Evo NXT Game Basketball Size 7 (Used in CIF-SS Championship)</b>	
<i>*Girls Basketball:</i>	<b>Wilson Evo NXT Game Basketball Size 6 (Used in CIF-SS Championship)</b>	
<i>*Football:</i>	<b>Wilson GST NCAA 1003 Official Leather Football (Used in CIF-SS Championship)</b>	
Lacrosse:	<b>Champion Sports NOCSAE Balls</b> (White LRWNOCSAE, Yellow LBYNOCSAE, Orange LBO, Lime Green LBG)	
<i>*Soccer:</i>	<b>Wilson Forte Fybrid II NCAA Match Soccer Ball (Used in CIF-SS Championship)</b>	
<i>*Softball:</i>	<b>Rawlings FPCIF-SS (Used in CIF-SS Championship)</b>	
Tennis:	<b>Penn ATP World Tour (Used in CIF-SS Championship)</b> <b>Pro Penn Marathon</b>	
<i>*Volleyball:</i>	<b>Mikasa VQ2000 Series (will be used in the 2021-2022 Championship)</b> <b>Mikasa VFC1000 Series (will be used in the 2022-2026 Championship)</b>	
Boys Water Polo:	<b>KAP7 model 105 with NFHS stamp (Used in CIF-SS Championship)</b>	
Girls Water Polo:	<b>KAP7 model 104 with NFHS stamp (Used in CIF-SS Championship)</b>	

### Mandatory Playoff Use Requirement:

The mandatory "official" ball rule for all playoff rounds, excluding golf. The rule applies throughout the conduct of **all** CIF-SS **playoff** contests.

*\*There is a 1-year transition period for the following sports. The mandatory playoff use requirement goes into effect for these sports in the 2022-2023 season.*

### Playoff Ball Use Rule Enforcement:

Should a school fail to provide the correct game ball, the game will always be played. Teams/schools failing to utilize the correct official ball in CIF-SS playoffs will be reported by officials to CIF-SS and will not be allowed to host their next available home playoff game. Penalty will carry over to the next season if not enforceable this season due to elimination.

*Note: NFHS stamp is required in all sports except in golf and tennis.*

## PLAYOFF INFORMATION

---

### A. CIF SOUTHERN SECTION GIRLS INDIVIDUAL TENNIS QUALIFICATIONS

Each league will be assigned to one of the **five** scheduled sectional tournament sites. Each league may enter two players in singles and two doubles teams.

**League entries will be due to the CIF-SS Office through CIFSSHOME.org no later than Friday, November 5, 2021 at 12:00 noon.**

### B. PLAYOFF TOURNAMENT RULES

1. Refer to Article 320 (Playoffs) of the Blue Book for details regarding playoff information.
2. The Commissioner of Athletics shall secure the necessary officials, provide the balls, and select a seeding procedure deemed appropriate and make up the draw.
3. School uniforms are preferred for the sectionals, however uniforms shall conform to the dress rules as established by the SCTA. Dress shall be appropriate tennis attire, **not to include advertising and pictures.** Finalists are to wear school issued uniforms.
4. **CONTINUOUS PLAY RULES:**
  - All serves must be taken prior to the start of the match.
  - Ninety (90) seconds allowed for changing sides (except first side change of each set)
  - As of January, 2001, two (2) minutes is allowable for side changes **between sets.** Continuous play rules shall now be utilized during the first side change of any set, therefore no coaching will be permitted.
  - No play stoppage of any kind allowed without specific permission. In compliance with USTA 18 & under rules, there is a 10 minute break between the 2nd and 3rd sets.
  - In all qualifying matches, including the round of 32, a USTA 10-point Match Tie-Breaker will be utilized in lieu of a 3<sup>rd</sup> set. In compliance with USTA 18 & Under rules, there is a 3 minute break between the 2<sup>nd</sup> set and 10-point match tie breaker. Beginning with the round of 16, 2 out of 3 set match play will be utilized.
5. **SCORING:** Regular scoring. The USTA ten-point match tie-break system shall be used in all qualifying sectional tournaments in lieu of a third set (first to win ten points and be ahead by a margin of two points). Regular tie-break procedure will be in effect.
6. **TIEBREAK SYSTEM (6-6):** The CIF-SS will use the regular USTA set tie break.



## 7. USTA POINT PENALTY SYSTEM

The USTA Point Penalty System will be in effect throughout the Individual Tennis Tournament.

Violations shall be penalized as follows:

First Offense -	Point
Second Offense -	Game
Third Offense -	Default

### **Code Violations:**

#### Delay

- Not resuming play after natural loss of physical condition
- Not resuming play after an injury timeout or after treatment on a changeover
- Not playing within 25 seconds of having been directed to resume play
- Passage of 25 seconds after any time violation
- Leaving the court for an unauthorized reason

#### Conduct

- Visible or audible profanity or obscenity.
- Abuse of racket, balls, or equipment.
- Verbal or physical abuse of a player or official.
- Coaching (except during the 90 second changeover).
- Abusive conduct by a player or a person associated with a player.
- Retaliatory calls (obviously bad call made in retaliation for the opponent's calls).
- Unsportsmanlike conduct.

## 8. TIME VIOLATIONS

- Delay between points or after warm-up.
- Violation of the 90-second changeover rule.
- Time Violation Penalties:
  - First offense - warning
  - Each additional violation - one point penalty

Note: The passage of 25 seconds after a time violation shall result in assessment of a **code** penalty.

9. COACHING: Coaching is permitted during the 90 seconds allowed for changing sides (except first side change of each set), providing it does not distract opposing players or delay the start of play at the end of the 90 seconds. Coaching is also permitted for 3 minutes prior to the start of the USTA 10-point match tie-breaker. Coaching is allowed by two designated high school coaches only.

10. PROTEST OF PLAYOFF CONTESTS: By action of the CIF-SS Council, protests of playoff contests will no longer be entertained following the conclusion of the contest. Coaches must resolve questions pertaining to possible misapplication of the rules in accordance with the USTA rules. No protest may be carried forth once the contest is completed.

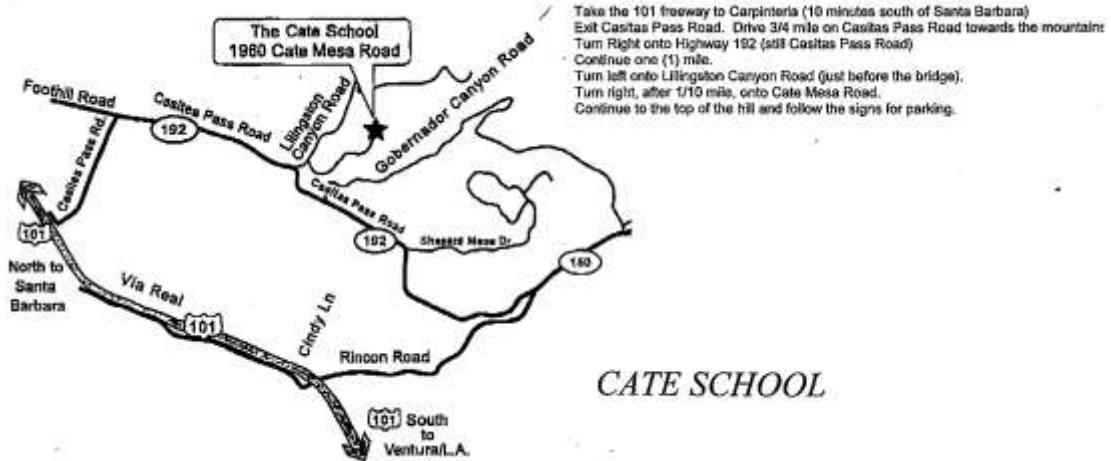
Coaches are encouraged to carry USTA rulebooks with them for all playoff contests.

Schools will still have the opportunity to protest a contest in accordance with Southern Section rules, Rule 1111, as it pertains to use of ineligible player or violations of any CIF-SS rule in connection with the contest.

11. ENTRY FEE: There will be no entry fee assessed for this tournament.
12. ELIGIBILITY FORM: It will be the responsibility of each school having entries in this tournament to submit an approved eligibility form covering their players. Eligibility forms are submitted through the team roster section of CIFSHOME.org.
13. ELIGIBILITY LIST:  
The CIF Southern Section Eligibility List will be generated through the [www.cifsshome.org](http://www.cifsshome.org) site. As you input your roster information, the eligibility list information will be input at that time.
- ALL COACHES ARE RESPONSIBLE FOR ASCERTAINING THAT ANY PLAYER(S) ENTERED HAVE NO CONFLICT WITH ANY OTHER EVENT OR ACTIVITY.
14. Please read carefully the enclosed Special Notice pertaining to supervision of athletes. If the coach is not in attendance, entrants will not be allowed to participate
15. AWARDS: Appropriate awards will be given to the winner and runner-up in both singles and doubles.

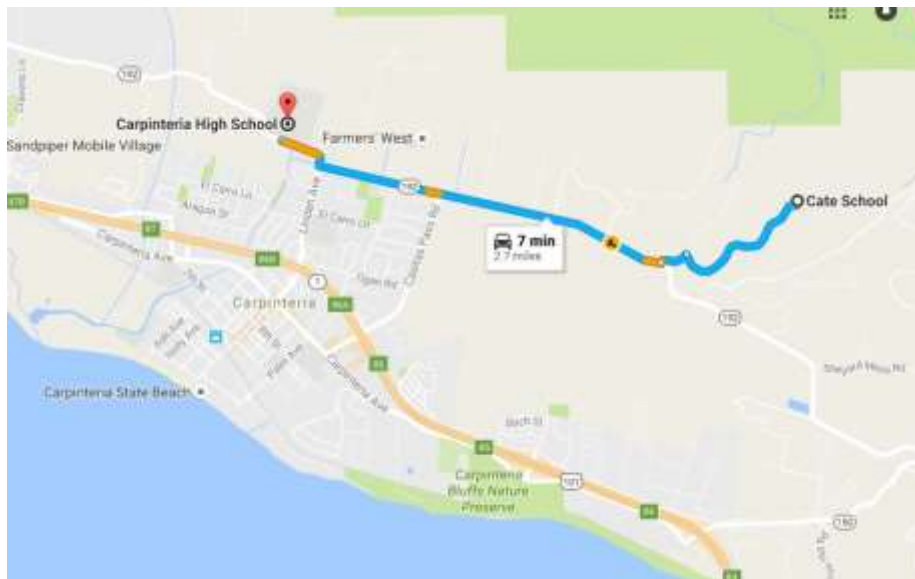
## C. SITE MAPS

### **CATE HIGH SCHOOL** 1960 Cate Mesa Road, Carpinteria, CA 93013



(see map below for distance between Cate HS and Carpinteria HS)

### **CARPINTERIA HIGH SCHOOL** 4810 Foothill Road, Carpinteria, CA 93013



# LAKWOOD TENNIS CENTER

## 4212 Club House Drive, Lakewood, CA 90712

From 405 FWY-Exit 405 at Lakewood Bl-go north to Carson St-turn left-go to Clubhouse Dr-turn right to courts

From 605 FWY-Exit 605 at Carson St-go west to Clubhouse Dr-turn right to courts

From 91 FWY-Exit Lakewood Bl-go south to Carson St-turn right-go to Clubhouse Dr-turn right to courts

From 710 FWY-Exit Del Amo Bl-go east to Paramount Bl-to right-go to Carson St-turn left-go to Clubhouse Dr-turn left to courts



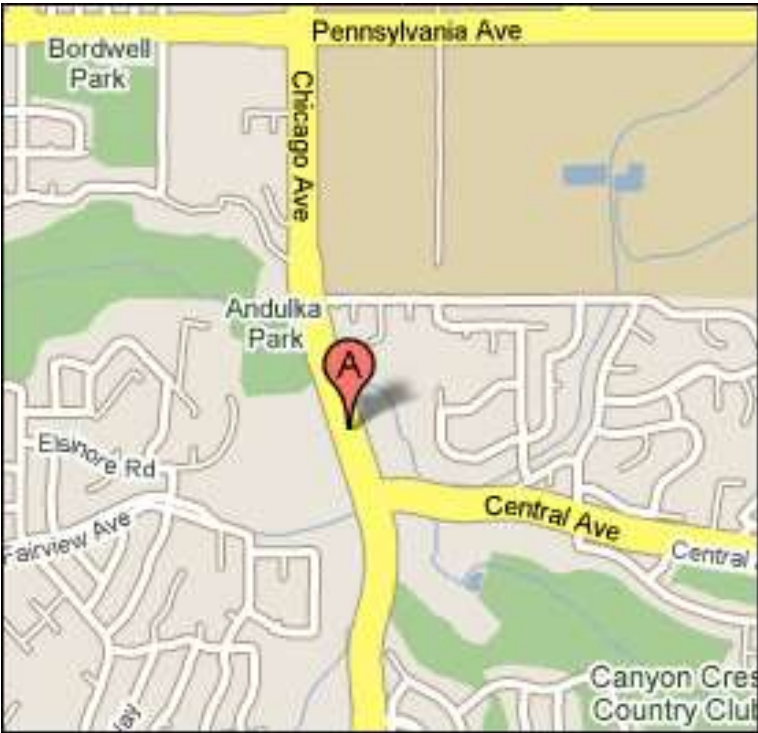
# MARINA HIGH SCHOOL

## 15871 Springdale St., Huntington Beach, CA 92649



# ANDULKA PARK TENNIS CENTER

5051 Chicago Avenue, Riverside, CA 92507



# WHITTIER NARROWS TENNIS CENTER

1202 North Potrero Ave., South El Monte, CA 91733



D. SUPERVISION OF ATHLETES/CONDUCT

**SPECIAL NOTICE - INDIVIDUAL TENNIS**

**SUPERVISION OF ATHLETES**

The Southern Section Office has experienced a problem which has perpetuated itself over the past few years as it pertains to proper supervision and entry of student-athletes in the post-season playoffs.

The situation relates only to individual sports, i.e. CROSS COUNTRY, INDIVIDUAL TENNIS, TRACK, SWIMMING, etc. and the official recognition and registration of entrants at the respective playoff sites.

State and Southern Section Rule 503 states:

No CIF team (i.e., individual) shall participate in inter-scholastic or approved competition with any other team unless the CIF team is under supervision as required by the California Administrative Code 49032 and CIF By-Law #503 (F). (Additionally, refer to Rule 123.) The supervisor must remain in attendance at all times.

**Those persons APPROVED FOR SUPERVISION PURPOSES are limited to:**

- A. Certificated personnel**
- B. Certified Coaches (certified credentialed coaches)**
- C. Non-certificated temporary coaches (certified walk-on coaches.)**

(It should be noted that schools representing the same DISTRICT may send one credentialed or certified supervisor for three or four athletes. These individuals have been recognized and are to continue to be recognized for registration and participation purposes in that the district has assigned the supervisory role for all students from its' member schools to this one individual.)

However, the concern is for those students who ARE NOT accompanied by a faculty representative and report to the playoff site by themselves or with a parent. ***GIVING PARENTS THE SUPERVISION AUTHORITY, WHETHER IN WRITING OR NOT, DOES NOT MEET THE STANDARDS SET FORTH IN THE ABOVE REGULATIONS.*** This also applies to parents who are the student=s private coach but are not under contract to the member school.

PLEASE NOTE, THIS RULE WAS REVIEWED BY BOTH THE STATE CIF OFFICE, ITS GENERAL COUNSEL AND THE SOUTHERN SECTION EXECUTIVE COMMITTEE. IT HAS BEEN REAFFIRMED THAT THE INTERPRETATION STAND AS ABOVE AND THAT ANY STUDENT REPORTING FOR COMPETITION WHO IS NOT UNDER DIRECT SUPERVISION IN ACCORDANCE WITH STATE AND SOUTHERN SECTION RULE 503, IS TO BE DENIED ENTRY FOR PARTICIPATION IN THE COMPETITION.

As pointed out by the Southern Section and State CIF attorney, there are inherent liability problems when an individual competes in violation of said rule. Please review this rule with your staff in that it will be strictly enforced as per the above application.

## CODE OF CONDUCT

The highest type of sportsmanship is expected from every player! An understanding of and a commitment to the points highlighted on this card are part of your responsibility as a player in a U.S.T.A. tournament. **Violators of this code or its spirit are subject to disciplinary action.**

1	Once you have entered a tournament, honor your commitment to play. Exceptions should occur only in cases of serious illness, injury, or personal emergency.
2	From the beginning of the match, play must be continuous. Attempts to stall or to extend rest periods for the purpose of recovering from a loss of physical condition (such as cramps or shortness of breath) are clearly illegal.
3	Intentional distractions that interfere with your opponent's concentration or effort to play the ball are against the rules.
4	Spectators, including parents, friends, and coaches, are welcome to watch and enjoy matches. Their role, however is clearly restricted to that of passive observer with <b>no involvement of any kind</b> during the match.
5	Players are expected to put forth a full and honest effort regardless of the score or expected outcome.
6	<p>Players are expected to maintain full control over their emotions and the resulting behavior throughout the match. If you begin to lose your composure during play, try the following:</p> <ul style="list-style-type: none"> <li>§ Take several deep breaths, exhale as slowly as possible and feel your muscles relax.</li> <li>§ Concentrate on your own game and behavior while ignoring distractions from your opponent or surroundings.</li> <li>§ Be your own best friend &amp; enjoy your good shots and forget the poor ones.</li> </ul>

## ON-COURT RULES\*

Take this card onto the court for reference!

If you have any doubt as to whether a ball is out or good, you must give your opponent the benefit of the doubt and play the ball as good. You should not play a let.

It is your obligation to call all balls on your side, to help your opponent make calls when the opponent requests it, and to *call against yourself* (with the exception of a first service) any ball that you clearly see out on your opponent's side of the net.

Any Aout@ or Alet@ call must be made instantaneously (i.e., made before either an opponent has hit the return or the return has gone out of play); otherwise, the ball continues in play.

Do not enlist the aid of spectators in making line calls.

If you call a ball out and then realize it was good, you should correct your call.

To avoid controversy over the score, the Server should announce the set score (e.g., 5-4) before starting a game and the game score (e.g., thirty-four) prior to serving each point.

If players cannot agree on the score, they may go back to the last score on which there was agreement and resume play from that point, or they may spin a racket.

Foot faults are not allowed. If an opponent persists in foot faulting after being warned not to do so, the Referee should be informed.

§ Do not stall, sulk, complain, or practice gamesmanship.

Wait until the players on another court have completed a point before retrieving or returning a ball.

*\*Excerpted from the official U.S.T.A. publication, The Code, whose principles and guidelines shall apply in any match conducted without officials.*

**United States Tennis Association  
70 West Red Oak Lane  
White Plains, NY 10604-3602**

E. PLAYOFF/CHAMPIONSHIPS – Post Season Awards

General information regarding CIF Southern Section Playoff/Championship Requirements - Additional/Custom Post Season Awards can be found at [www.CIFSS.org](http://www.CIFSS.org) on the download section of the sports page.

**Southern Section**  
**CIF**  
Est. 1913

**JL CUSTOM JACKETS**  
OFFICIAL LICENSED PATCH  
AND JACKET MANUFACTURER

**Varsity Jacket Special**  
**\$289.00**  
WOOL BODY WITH LEATHER SLEEVES AND POCKETS  
Varsity Letter Sewn on Front  
Make and Sew on up to 3 Sport Emblems  
Embroider First Name, School Name, Mascot Name and 1 Sport onto the front  
Create and Sew on a Custom Graduating Year

**Exclusive Distributor for ALL Champions Finalists Runner-Up & ALL CIF patches**  
Standard Girls Package  
All wool body and sleeves with a wool hood  
**\$275.00**

You can design and purchase your own custom patches on our website.

To Order Call:  
**(951) 867-3200**  
or visit us on the web:  
**www.jlcustomjackets.com**  
7161 Old 215 Frontage Road, Moreno Valley, CA  
Fax (951) 867-3277

**JL**  
Custom Jackets and Patches

• PRICES ARE SUBJECT TO CHANGE WITHOUT NOTICE •



# Bally SPORTS

HOME OF



GAME ON

