

WINTER 2023-2024

Girls Ind. Wrestling

CIF SOUTHERN SECTION



PLAYOFF BULLETIN

INDIVIDUAL WRESTLING



TO: CIF-SS ATHLETIC DIRECTORS/GIRLS WRESTLING COACHES

FROM: RICH SHEARER, CIF SOUTHERN SECTION ASSISTANT COMMISSIONER
ROB FROH, INDIVIDUALS QUALIFYING SERIES TOURNAMENT DIRECTOR

RE: 2024 CIF SOUTHERN SECTION REGIONAL QUALIFYING VARSITY
TOURNAMENTS

DATE: JANUARY 20, 2024

DIVISIONAL CHAMPIONSHIPS

On Friday, February 9 and Saturday, February 10, 2024 four Divisional Championship meets will be conducted for the purpose of determining the 2023-24 CIF Southern Section Individual Wrestling Champions, as well as Masters Meet qualifiers. Meet information regarding these sites, Meet Managers, league assignments, ticket prices, etc. are listed on the following pages.

CENTRAL DIVISION

(3 ENTRIES PER LEAGUE – 36 TOTAL)

ADELANTO HIGH SCHOOL
15620 Joshua Road, Adelanto 92301
Michael LaBrosse, Meet Manager

No.	League	Qualifiers
1.	Channel	8-4
2.	Citrus Belt	6-3
3.	Desert Sky	7-4
4.	Freelance	1
5.	Ivy	9-5
6.	Marmonte	5-3
7.	Mojave River	6-3
8.	Moore	6-3
9.	Orange Coast	6-3
10.	Pioneer	4-2
11.	Rio Hondo	5-3
12.	South Valley	4-2

(8 QUALIFY, EACH WEIGHT, TO MASTERS)
SEEDING MEETING: THURSDAY 2-8-24
MEETING LOCATION: Building A, A115
4:00pm Seeding Committee Meeting (No Coaches)
7:00 pm sharp Seedings Released to Coaches

EASTERN DIVISION

(3 ENTRIES PER LEAGUE – 38 TOTAL)

MARINA HIGH SCHOOL
15871 Springdale Street, Huntington Beach 92649
Chris Rasmussen, Meet Manager

No.	League	Qualifiers
1.	Del Rio	5-3
2.	Desert Empire	6-3
3.	Desert Valley	7-4
4.	Golden	8-4
5.	Mt. Baldy	6-3
6.	Orange	5-3
7.	San Andreas	5-3
8.	Southwestern	6-3
9.	Suburban Valley	9-5
10.	Sunkist	6-3
11.	Sunset	8-4

(8 QUALIFY, EACH WEIGHT, TO MASTERS)
SEEDING MEETING: THURSDAY 2-8-24
MEETING LOCATION: Room 243
4:00pm Seeding Committee Meeting (No Coaches)
7:00 pm sharp Seedings Released to Coaches

NORTHERN DIVISION**(3 ENTRIES PER LEAGUE – 39 TOTAL)**

SAN DIMAS HIGH SCHOOL

800 W. Covina Blvd., San Dimas

Jess Jaime, Sr, Meet Manager

No.	League	Qualifiers
1.	Almont	6-3
2.	Baseline	5-3
3.	Bay	5-3
4.	Century	8-4
5.	Coastal Canyon	5-3
6.	Freeway	6-3
7.	Mission Valley	7-4
8.	Montview	6-3
9.	Mountain Valley	5-3
10.	Pacific Coast	8-4
11.	River Valley	5-3
12.	Valle Vista	6-3

(8 QUALIFY, EACH WEIGHT, TO MASTERS)

SEEDING MEETING: THURSDAY 2-8-24

MEETING LOCATION: ROOM H5

4:00pm Seeding Committee Meeting (No Coaches)

7:00 pm sharp Seedings Released to Coaches

SOUTHERN DIVISION**(3 ENTRIES PER LEAGUE – 34 TOTAL)**

CORONA HIGH SCHOOL

1150 W. 10th Street, Corona

Jim Bowers, Meet Manager

No.	League	Qualifiers
1.	605	4-2
2.	Big VIII	6-3
3.	Citrus Coast	5-3
4.	Coast View	9-5
5.	Empire	5-3
6.	Golden West	6-3
7.	Hacienda	6-3
8.	Inland Valley	5-3
9.	Miramonte	5-3
10.	Mountain Pass	6-3
11.	Palomares	6-3

(8 QUALIFY, EACH WEIGHT, TO MASTERS)

SEEDING MEETING: THURSDAY 2-8-24

MEETING LOCATION: ROOM H7

4:00pm Seeding Committee Meeting (No Coaches)

7:00 pm sharp Seedings Released to Coaches

DATES AND TIMES**FRIDAY, February 9, 2024 (All times are approximate)**

Coaches and Wrestlers Registration (Mandatory)

Weigh-in and grooming (All wrestlers must be present)

Coaches' Meeting

First Round (6 Mats) Any pigtail matches

Championship Second Round/ Cons. 1st Round (6 Mats)

Consolation Second Round (6 Mats)

Championship Quarterfinals/ Cons. 3rd Round (6 Mats)

8:00 a.m.

9:00 a.m.

10:30 a.m. - 11:00 a.m.

11:00 a.m. - 2:30 p.m.

2:30 p.m. - 6:00 p.m.

6:00 p.m. - 7:30 p.m.

7:30 p.m. - 9:30 p.m.

SATURDAY, February 10, 2024 (All times are approximate)

Weigh-in and grooming (All wrestlers must be present)

Consolation Fourth Round (6 Mats)

Championship Semifinals/ Cons. 5th Round (6 Mats)

Consolation Semifinals (4 Mats)

9:00 a.m.

11:00 a.m. - 12:00 p.m.

12:00 p.m. - 1:30 p.m.

1:30 p.m. - 2:15 p.m.

Parade of Champions

(Consolation 7th, 8th, 5th, 6th, 3rd and 4th)

CHAMPIONSHIP FINALS (4Mats)

2:15 p.m. - 2:25 p.m.

2:30 p.m. - 5:00 p.m.

With the permission of the CIFSS Office the Meet Manager can move up scheduled events

LEAGUE ENTRY INSTRUCTIONS – TRACK WRESTLING

Entering League Results for CIF Individual Tournaments

- ❖ All League Meet Managers will receive an email that brings them directly to a spreadsheet for their league. Simply enter the names of the wrestlers in the appropriate fields.

CIF SS Individual Boys Coastal Division

File Edit View Insert Format Data Tools Extensions Help Last edit was seconds ago

	A	B	C	D	E	F	G	H	I
	Weight	Group	First Name	Last Name	Grade	School	League	Place	CIF Division
1	106	CIF Qualifier	John	Doe			Trinity	1	Coastal
2	106	CIF Qualifier					Trinity	2	Coastal
3	106	CIF Qualifier					Trinity	3	Coastal
4	106	Alternate					Trinity	4	Coastal
5	113	CIF Qualifier					Trinity	1	Coastal
6	113	CIF Qualifier					Trinity	2	Coastal
7	113	CIF Qualifier					Trinity	3	Coastal
8	113	Alternate					Trinity	4	Coastal
9	120	CIF Qualifier					Trinity	1	Coastal
10	120	CIF Qualifier					Trinity	2	Coastal
11	120	CIF Qualifier					Trinity	3	Coastal
12	120	Alternate					Trinity	4	Coastal
13	126	CIF Qualifier					Trinity	1	Coastal
14	126	CIF Qualifier					Trinity	2	Coastal
15	126	CIF Qualifier					Trinity	3	Coastal
16	126	Alternate					Trinity	4	Coastal
17	132	CIF Qualifier					Trinity	1	Coastal
18	132	CIF Qualifier					Trinity	2	Coastal
19	132	CIF Qualifier					Trinity	3	Coastal
20	132	Alternate					Trinity	4	Coastal

Trinity (3) Marmonte (3) Valle Vls

The link should bring you to your league.

- ❖ In the next two columns, select the Grade and School of the wrestler from the dropdown menus.

CIF SS Individual Boys Coastal Division

File Edit View Insert Format Data Tools Extensions Help Last edit was 55 minutes ago

	A	B	C	D	E	F	G	H	I
	Weight	Group	First Name	Last Name	Grade	School	League	Place	CIF Division
1	106	CIF Qualifier	John	Doe			Trinity	1	Coastal
2	106	CIF Qualifier					Trinity	2	Coastal
3	106	CIF Qualifier					Trinity	3	Coastal
4	106	Alternate					Trinity	4	Coastal
5	113	CIF Qualifier					Trinity	1	Coastal
6	113	CIF Qualifier					Trinity	2	Coastal
7	113	CIF Qualifier					Trinity	3	Coastal
8	113	Alternate					Trinity	4	Coastal
9	120	CIF Qualifier					Trinity	1	Coastal
10	120	CIF Qualifier					Trinity	2	Coastal
11	120	CIF Qualifier					Trinity	3	Coastal
12	120	Alternate					Trinity	4	Coastal
13	126	CIF Qualifier					Trinity	1	Coastal
14	126	CIF Qualifier					Trinity	2	Coastal
15	126	CIF Qualifier					Trinity	3	Coastal
16	126	Alternate					Trinity	4	Coastal
17	132	CIF Qualifier					Trinity	1	Coastal
18	132	CIF Qualifier					Trinity	2	Coastal
19	132	CIF Qualifier					Trinity	3	Coastal
20	132	Alternate					Trinity	4	Coastal

Trinity (3) Marmonte (3)

CIF SS Individual Boys Coastal Division

File Edit View Insert Format Data Tools Extensions Help Last edit was seconds ago

	A	B	C	D	E	F	G	H	I
	Weight	Group	First Name	Last Name	Grade	School	League	Place	CIF Division
1	106	CIF Qualifier	John	Doe			Trinity	1	Coastal
2	106	CIF Qualifier					Trinity	2	Coastal
3	106	CIF Qualifier					Trinity	3	Coastal
4	106	Alternate					Trinity	4	Coastal
5	113	CIF Qualifier					Trinity	1	Coastal
6	113	CIF Qualifier					Trinity	2	Coastal
7	113	CIF Qualifier					Trinity	3	Coastal
8	113	Alternate					Trinity	4	Coastal
9	120	CIF Qualifier					Trinity	1	Coastal
10	120	CIF Qualifier					Trinity	2	Coastal
11	120	CIF Qualifier					Trinity	3	Coastal
12	120	Alternate					Trinity	4	Coastal
13	126	CIF Qualifier					Trinity	1	Coastal
14	126	CIF Qualifier					Trinity	2	Coastal
15	126	CIF Qualifier					Trinity	3	Coastal
16	126	Alternate					Trinity	4	Coastal
17	132	CIF Qualifier					Trinity	1	Coastal
18	132	CIF Qualifier					Trinity	2	Coastal
19	132	CIF Qualifier					Trinity	3	Coastal
20	132	Alternate					Trinity	4	Coastal

Trinity (3) Marmonte (3)

- ❖ Be sure to include Alternates. If there are less qualifiers than there are slots for that weight class, leave the name fields blank and then select “No Qualifier” from the dropdown menu in the School Column.

CIF SS Individual Boys Coastal Division

File Edit View Insert Format Data Tools Extensions Help Last edit was seconds ago

	A	B	C	D	E	F	G	H	I
	Weight	Group	First Name	Last Name	Grade	School	League	Place	CIF Division
1	106	CIF Qualifier	John	Doe			Trinity	1	Coastal
2	106	CIF Qualifier	Mike	Smith			Trinity	2	Coastal
3	106	Alternate					Trinity	3	Coastal
4	106	Alternate					Trinity	4	Coastal
5	113	CIF Qualifier					Trinity	1	Coastal
6	113	CIF Qualifier					Trinity	2	Coastal
7	113	CIF Qualifier					Trinity	3	Coastal
8	113	Alternate					Trinity	4	Coastal
9	120	CIF Qualifier					Trinity	1	Coastal
10	120	CIF Qualifier					Trinity	2	Coastal
11	120	CIF Qualifier					Trinity	3	Coastal
12	120	Alternate					Trinity	4	Coastal
13	126	CIF Qualifier					Trinity	1	Coastal
14	126	CIF Qualifier					Trinity	2	Coastal
15	126	CIF Qualifier					Trinity	3	Coastal
16	126	Alternate					Trinity	4	Coastal

Trinity (3) Marmonte (3)

If your boys and girls league finals have the same Meet Manager, he or she will receive two separate links (one for boys and one for girls).

Please Note: By NFHS Rule 4-5, there will be **no** weigh-in at the conclusion of Friday's competition. All weigh-ins must take place on the **day of competition**, a maximum of 2 hours before the competition begins. This is the same weigh-in procedure that will be in place at the Masters Meet and State Championships.

WEIGH-IN AND GROOMING CHECK

Each coach is expected to be present to identify his or her wrestlers at the beginning of weigh-ins to prevent misunderstandings and/or mistakes. Grooming will be checked prior to weigh-ins. Weigh-ins will be conducted by female weight masters whenever possible. They will check conformance as required by the National Federation Rule Book. **All wrestlers must be present in the weigh-in area at the beginning of weigh-ins and are not allowed to leave until their weigh-in is completed.** All weigh-ins will begin with the 100 lb. weight class and proceed in order up to the 235 lb. class. When all wrestlers for a weight class have had the opportunity to weigh-in and the next class is called, that weight class is closed. The two-pound growth allowance will be in effect.

A contestant shall weigh in for only one weight class during the weigh-in period. If only one scale is available, a contestant may step on and off that scale two times to allow for mechanical inconsistencies in that scale. If the contestant fails to make weight on the first scale, the contestant shall immediately step on each available scale one time in an attempt to make weight. During time off the scale(s), activities that promote dehydration are prohibited.

(NFHS Wrestling Rules Book 4-5-3.)

It is the responsibility of the head coach to verify that his wrestlers are properly groomed and equipped to wrestle. Before they arrive at the tournament, they should examine their wrestlers and their equipment to make sure of the following things:

1. Their nails are clipped short and smooth
2. Their hair is cut properly, braided, or have a hair cover that is attached to the wrestler's headgear
3. They bring a mouthpiece to protect both their top and bottom teeth if they have braces
4. Their laces are properly tied, secured in an acceptable fashion (Velcro strap, tape, double knotted).
5. Headgear should provide adequate protection and have no tape or crossed straps.
6. If there are any questionable skin conditions, they should start treatment and bring the correct form signed by a doctor. ...Final decision on skin questions will be made by designated Tournament Doctor/Meet Director.

WEIGH-IN ATTIRE

The CIF Southern Section mandates that all wrestlers weigh-in wearing their school issued competition uniform fully in place

A reminder that Track Wrestling Program is different for girls in reference to minimum body fat of 12% for females.

WEIGHT CLASSES

The following weight classes will be in effect for the CIF Girl's Championship Meet:

100 Pounds	105 Pounds	110 Pounds	115 Pounds	120 Pounds	125 Pounds	130 Pounds,
135 Pounds	140 Pounds	145 Pounds	155 Pounds	170 Pounds	190 Pounds	235 Pounds

Note: The 2-pound growth allowance will be used in accordance with the National Federation Wrestling Rules.

AUTOMATIC ENTRIES PER WEIGHT CLASS

A 32-person bracket will be used whenever possible with no more than one entry per weight class per school. Should more than 32 wrestlers in a given weight class qualify, tournament management will expand selected weight class bracket.

This Southern Section Girl's individual Wrestling Championship Tournament is a Varsity Qualifying Tournament for the CIF Southern Section Girl's Wrestling Masters Meet Tournament, which will take place on Saturday, February 17th at Palm Springs High School.

The top 8 wrestlers in each weight class will qualify from the Girls Individual CIF-SS Championship Tournament to the CIF-SS Girls Masters Meet.

The top 8 wrestlers from each weight class of the CIF Southern Section Girls Masters Meet will qualify for the Girl's State Invitational Tournament on February 22-24 at the Rabobank Arena in Bakersfield, CA.

LEAGUE ENTRIES

The manager of each league-wrestling tournament will be furnished with an official link to enter results. An example is shown on the previous page. League entry deadline is **SUNDAY, FEBRUARY 4, 2024 at 5:00 P.M.**

ENTRY FEE

There will be no entry fee charged for the Southern Section Girls Individual Championship Meet. **ALL WRESTLERS MUST HAVE PROOF OF CIF WRESTLING MANAGEMENT WEIGHT ASSESSMENT (TRACK WRESTLING ALPHA MASTER REPORT).**

DRAW – All 4 Championships will be Double Elimination Format

Per existing rule, 4-team leagues will be guaranteed 2 entries, 5-6 team leagues will be guaranteed 3 entries and leagues with 7-8 teams or more will be guaranteed 4 entries and 9 or more teams will be guaranteed 5 entries into the C.I.F. Southern Section Individual Wrestling Championships. **The brackets for each division will reflect the total number of guaranteed entries of the leagues in that division.**

A qualifying event for approved freelance schools will be held, as necessary, on Saturday, February 3, 2024 and hosted at a site TBD. Eligibility of freelance participants must comply with Bylaw 3510 and have participated in 50% of the allowable matches. (20 for wrestling)

WRESTLING SEEDING WILL AGAIN BE DONE BY COMMITTEE ONLY

Seeding will be done by a seeding committee made up of League Representatives and members of the CIF Wrestling Advisory Committee. A Short Tournament organizational meeting will be held for coaches at 7:00 PM to discuss tournament procedures and announce the seeded wrestlers. **The decisions of the seeding committee will be final.**

The seeding committee will meet at 4:00 pm. Thursday the week of the individual divisional meet. The Tournament director will be responsible for selecting an individual to run the committee seeding meeting. The Tournament Director and the Seeding Director will meet with the CIF-SS administrator in charge of wrestling the Tuesday prior to the seeding committee meeting to discuss the proper procedures for running the seeding meeting.

The seeding committee will be made up of:

- Tournament Director
- Seeding Meeting Director
- One representative from each league
- Any member of the CIFSS Advisory Committee

The seeding committee will have the responsibility of seeding each weight class based on information shared on paper from each league representative. Wrestling Advisory Committee member will assist in this process.

The seeding committee will follow the stated CIFSS seeding criteria.

All coaches are responsible to have in the hands of their league representatives the pertinent information for their individual wrestlers immediately after the league finals to include prior results of who has beaten whom, State placement, CIFSS placement, tournament results and total records. It is the responsibility of that league representative to see that his league wrestlers are appropriately seeded.

At 7:00 p.m., there will be a general meeting of "all coaches" where tournament information will be shared along with the seeds. Any seeding "anomalies" that need to be corrected will be done at that time by the Seeding Director.

ALTERNATES

The manager of each league finals meet will provide for the selection of alternates from his league for representation at the divisional finals meet. No alternates will wrestle unless their names are listed (league finals managers only are responsible for alternates). Each alternate should be notified of the time schedule for the divisional finals meet, and plan to be present, in case they are called upon to wrestle. Should an opening occur after the league entries are submitted, that opening will be filled from the alternate list submitted by that league. Alternates will only be included if there is room in the bracket of 32.

FORFEIT RULE

If a wrestler forfeits, or fails to show for a championship or third-place match in any of the divisional meets, the winner will be given his choice of accepting either first or second place, or third or fourth place. This decision must be made at the time of the forfeit and so indicated to the Divisional Meet Manager. This procedure will also be used in the Masters Meet.

SEEDING PROCEDURES

These criteria, developed and supported by the C.I.F. Southern Section Wrestling Coaches Advisory Committee, are to be followed in order. When conflicts arise, they are to be resolved by a vote of the League Representatives. The Seeding Director is responsible for all final seeding decisions.

1. Criteria for seeding...
 - a. Most recent head-to-head competition
 - b. A returning State placer
 - c. A returning State qualifier (placed in the C.I.F.-SS Masters Meet 1st thru 8th)
 - d. A returning C.I.F.-SS place winner (1st thru 8th)
 - e. A wrestler with the best overall “representative” record against quality opposition.

Note: Coaches need to be able to provide verification of their wrestler’s results to their league representatives.

Voting Procedure

1. When there is considerable disagreement, argument or otherwise, the League Representatives should vote. This vote would follow a two-minute presentation by League Representatives.
2. The Seeding Director will make an arbitrary seeding, with the assistance of the Advisory Committee as a starting point for seeding.
3. A short “orderly” discussion will follow and League Representative, will decide each seed.
4. No more than 8 wrestlers per weight will be seeded. The remaining positions will be by draw. Where possible leagues will be separated.
5. Alternates will weigh-in along with qualifiers. The first alternate from each league will take the place of a qualifier in his league who does not make weight or is a no show. If a qualifier is overweight, injured, etc., and there is no alternate present from that league, there will be a random draw of other league alternates to fill that spot.
6. If a seeded wrestler does not show up, then each seeded wrestler will move up, and the bracket will remain the same, unless there is inter-league conflict, at which time the non-seeded wrestlers will be drawn again.
7. The Seeding Director has the power to make final seeding decisions.

The purpose of these criteria is to **be sure that best wrestlers are seeded appropriately**. When there is considerable consensus on who is number one, i.e., the number #1 rated wrestler in the State (Cho’s TCW rankings), who has totally dominated their opponents but did not place in State or CIFSS the prior year due to his grade, then “reason” should prevail.

Refer to **SCENARIOS** section in the Committee Meeting Seeding procedures for specific rulings.

MATCH COUNT

NFHS Rule 1-4-3 states that “No wrestler shall represent the school in more than one weight class in any meet or wrestle in more than five matches, excluding forfeits, in any one day of competition.”

Exception: No wrestler shall wrestle in more than six matches (championship or consolation), excluding forfeits, in any one day of a tournament conducted by the state high school association for qualification to the state high school championships or the actual championships.

AWARDS

The following awards will be presented at each championship tournament on Saturday, February 10, 2024.

1. Individuals: Engraved CIF-SS medals for all wrestlers placing first, second, third, fourth, fifth, sixth, seventh and eighth in each weight division.
2. MVP for lower weight levels 100-130 and upper weight levels 135 to heavyweight.
3. Participation Certificates: The template for the Participation Certificates can be downloaded from our website. www.cifsshome.org Go to "Awards" tab on the left toolbar

COACHES

During the tournament competition, a maximum of two team coaches will be permitted to sit in the restricted area. Facilities permitting, coaches shall be seated at least ten feet from the official's table and the edge of the mat.

SCHOOL ADMISSION - PRELIMS AND FINALS

Each team will be permitted a total of 4 passes for coaches and other designated personnel, this does not include participants. School personnel over the maximum of 4 **must purchase tickets**; this includes managers, statisticians, cheerleaders, bus drivers, etc.

ADMISSION PRICES

CIF SOUTHERN SECTION WRESTLING CHAMPIONSHIPS

FRIDAY, FEBRUARY 9, 2024

\$12.00 Adults
\$5.00 High School Students (with I.D.)
\$5.00 Children (3 - 13)

SATURDAY, FEBRUARY 10, 2024

\$12.00 Adults
\$5.00 High School Students (with I.D.)
\$5.00 Children (3 - 13)

CIF Courtesy Cards and Press Credentials will be honored at this event.

PARKING Parking lots are located at school sites.

LOCKER ROOMS

Locker rooms will not be provided. Valuables should NOT be left in the gymnasium. Teams should make arrangements for their protection.

PHOTOGRAPHERS

No photographers are allowed on the floor during the competition.

POST SEASON WORKOUTS

Female wrestlers who qualify for CIF post-season championship competition will be permitted to workout with female students from other high schools who have also qualified for the Girl's Southern Section Championship Tournament (Monday, February 5th, 2024).

Question: Would it be permissible for a wrestler who has qualified for the CIF Southern Section Regional to practice with another wrestler who is a member of the high school team but not qualified for post-season individual competition?

Answer: Wrestlers who qualify for post-season regional competition will be permitted to workout following the close of League Qualifying Tournament with students from other schools who have qualified for individual championship competition

CIF STATE WRESTLING CHAMPIONSHIPS

This 2023-24 CIF State Championship will be a 32-person double elimination tournament. The CIF Southern Section will have EIGHT (8) entries. Therefore, the top EIGHT (8) qualifiers from the Southern Section Girl's Masters Meet will be entered in the State Tournament. Under the one day format instituted for 2024 the top 4 finishers in each 16 person bracket will advance to the state tournament, a total of 8. The CIF State Wrestling Championships will be held at Mechanics Bank Arena in Bakersfield, CA on Thursday, February 22nd, Friday, February 23rd, and Saturday, February 24th, 2024.

JL CUSTOM JACKETS

Official CIF Licensed Patch
& Jacket Manufacturer



LETTERMAN JACKET SPECIAL \$339.00

WOOL BODY WITH LEATHER SLEEVES AND POCKETS	VARSITY LETTER SEWN ON FRONT	MAKE AND SEW ON UP TO 3 SPORT EMBLEMS
EMBROIDER FIRST NAME, SCHOOL NAME, MASCOT NAME AND 1 SPORT ONTO THE FRONT		CUSTOM GRADUATING YEAR IN CHENILLE MATERIAL



You can design and purchase your own custom patches on our website.



To Order Call:

(951) 867-3200

or visit us on the web:

www.jlcustomjackets.com

7161 Old 215 Frontage Road, Moreno Valley, CA

Fax (951) 867-3277

EXCLUSIVE
DISTRIBUTOR FOR
ALL
CHAMPIONS
FINALISTS
RUNNER-UP &
ALL CIF Patches

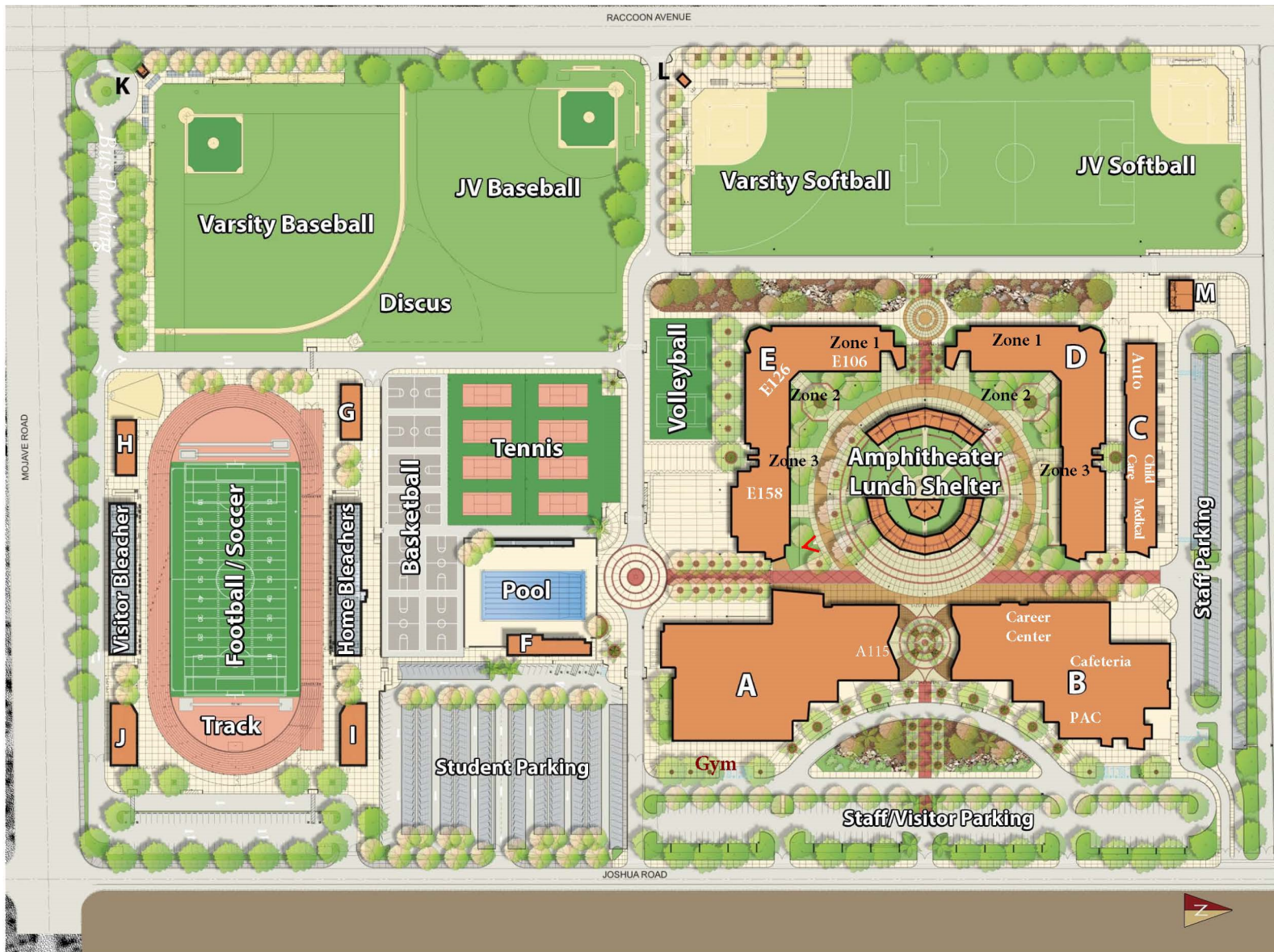
15 Business Day Turnaround Time for All Patch Orders
6 - 8 Week Turnaround Time for All New Jacket Orders

* Prices subject to change without notice disclaimer

GIRLS INDIVIDUAL WRESTLING

Central Division

ADELANTO HIGH SCHOOL



GYM is located in Building A

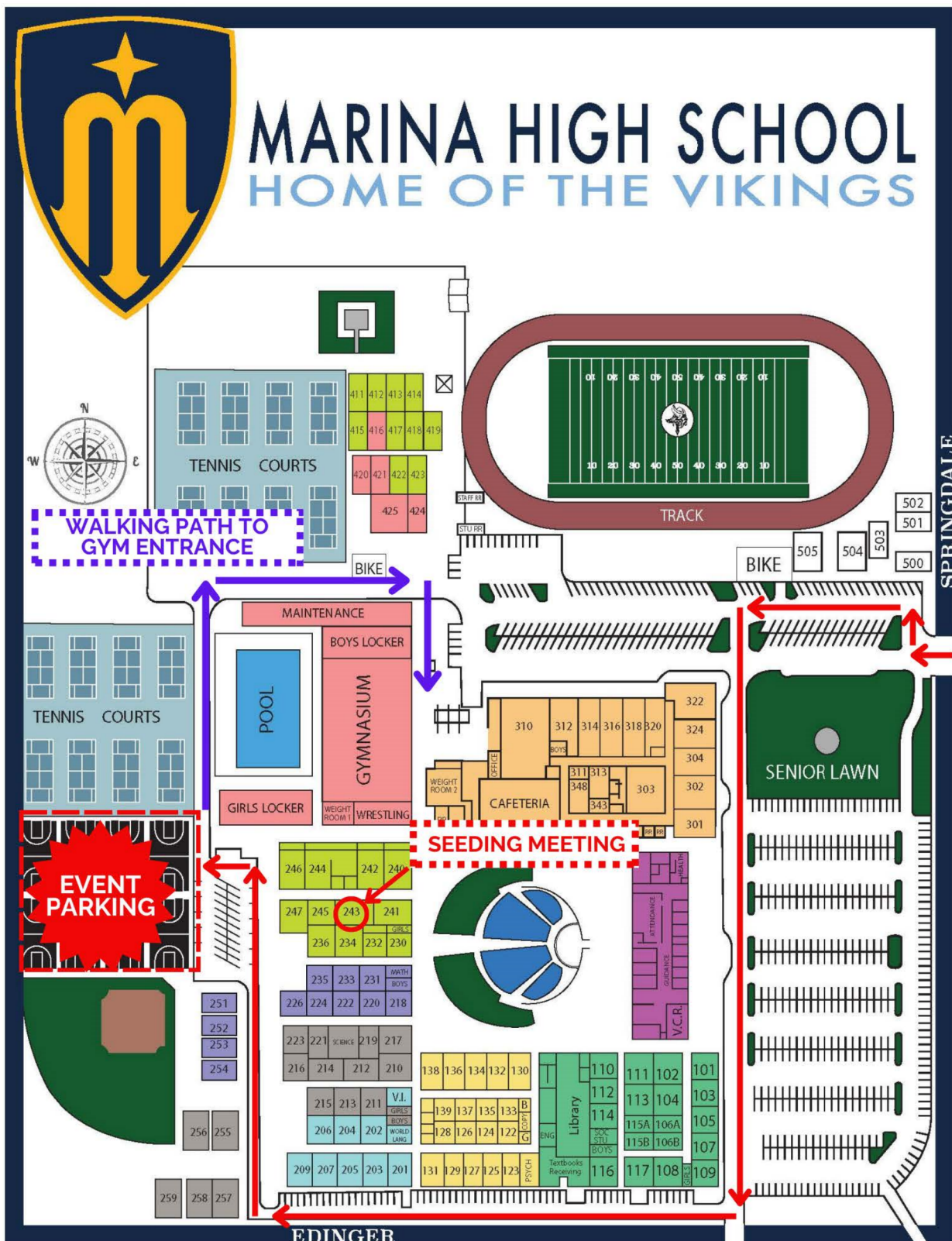
Parking Information:

1. Parking: teams and spectators in autos can park in the student lot with solar panels and by the football field
2. Buses must park by the Baseball Field

SEEDING MEETING WILL BE HELD IN ROOM A115

GIRLS INDIVIDUAL WRESTLING

Eastern Division



SEEDING MEETING WILL BE HELD IN ROOM 243

GIRLS INDIVIDUAL WRESTLING

Northern Division

SAN DIMAS HIGH SCHOOL



Parking Information:

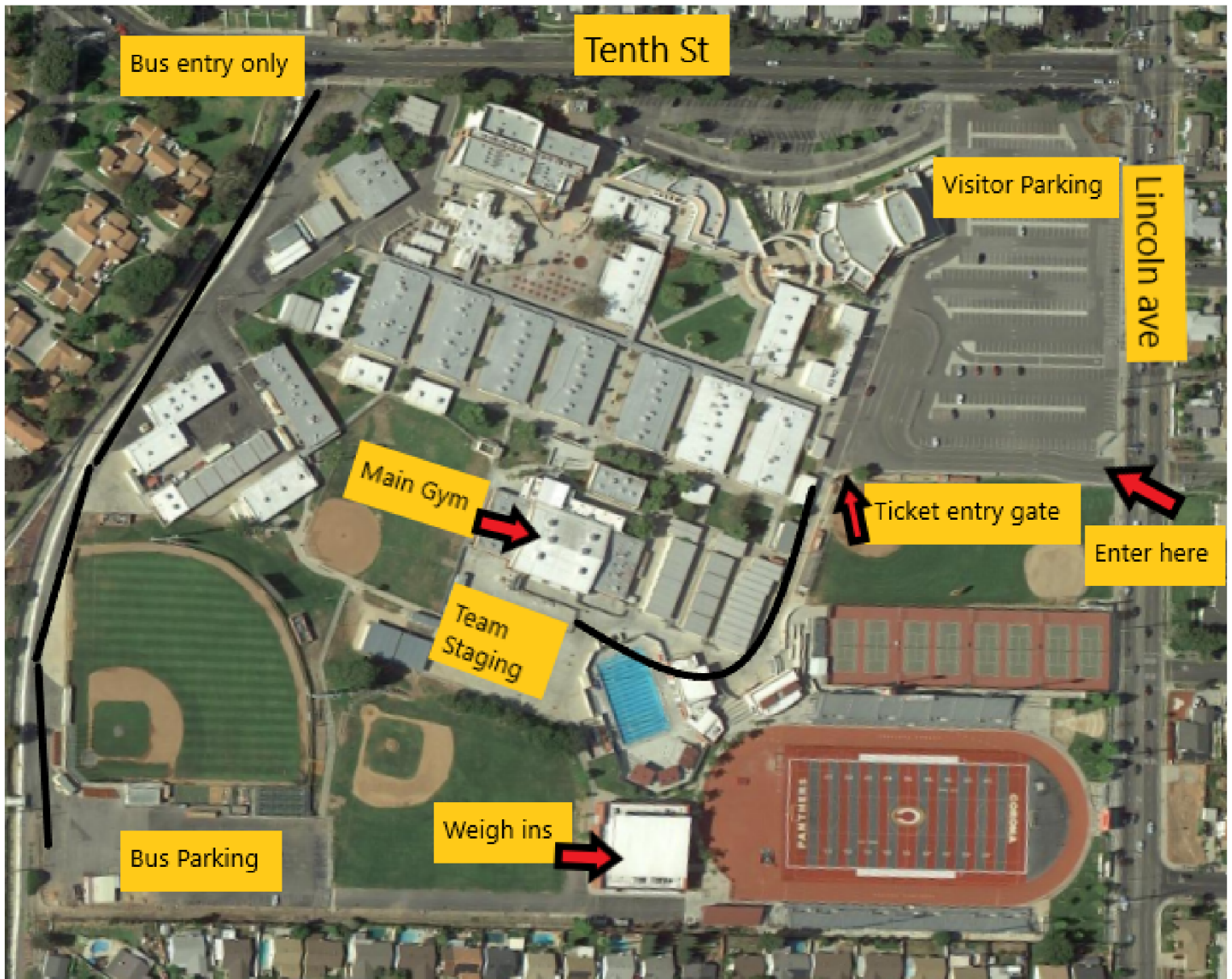
FRIDAY, FEBRUARY 9 Parking will be on Cypress Street between the purple and white circles as well as Covina Blvd yellow circle. After 1:30 p.m. on Friday and all day Saturday parking is the red circle area. There will be a charge for school lots. **DO NOT PARK at Lone Hill Middle School, they will tow.** Please do not disturb office or classes.

SEEDING MEETING WILL BE HELD IN ROOM H5

GIRLS INDIVIDUAL WRESTLING

Southern Division

CORONA HIGH SCHOOL



Staging is outdoors: Teams **MUST** bring their own eazy ups

SEEDING MEETING WILL BE HELD IN ROOM H7



THE
BEST
USE
THE
BEST

GATORADE



CIFSSHOME REQUIREMENTS

SCHEDULES & SCORES Complete your schedule in CIFSSHome prior to your season as well as update scores following each contest
Attention Athletic Directors/Coaches: It is very important that you enter your entire season schedule into CIFSSHOME (www.cifsshome.org) as well as update the scores immediately following your contests.

Log in @ www.cifsshome.org (If you do not have a log in & password as a coach, check with your Athletic Director). Once you are logged in:

- On the left panel, click on "Teams", select "**Wrestling, Boys/ Wrestling, Girls**"

To Add a game:

- On the left panel, click on "Events", select "Add Event", choose Game under "Event Type", choose date of game under "Event Date", choose **Wrestling, Boys/ Wrestling, Girls** under "Sport", choose Varsity under "Level", type the opposing school name in "Add Opponent", choose the type of game under "Select Game Type", click on Home, Away or Neutral under "Location", choose "Start Time" Click on "Save" to add one game or "Save & Duplicate" for multiple games.

- To Submit your score:


- On the left panel, click on "Teams", select "Teams Manager", scroll down to **Wrestling, Boys/ Wrestling, Girls** and click on VR to add Varsity scores Click on "Post Result" button, enter your team's score, enter the opponent's score, result should auto populate with either "W", "L" or "T" based on the correct match score entered. If the game was a forfeit, click on the Yes box, enter the set scores in "Notes".

Make sure that your overall and team records are correct on your team page

VARSITY COACHES

Attention Athletic Directors/Coaches: It is very important that you enter your Wrestling coaches (Head & Assistants) into CIFSSHome (www.cifsshome.org) no later than **FRIDAY, JANUARY 19, 2024**.

Log in @ www.cifsshome.org (If you do not have a log in & password as a coach, check with your Athletic Director).


- Click on the "**Users**" tab, click on "**User Manager**", click on the  in the upper right hand corner to add Coaches and Assistant Coaches. Enter the information requested on the "Add School User" page. Choose "Active" to provide the coach with access to CIFSSHome or "Inactive" for directory purposes only. Choose Yes or No to give the coach access to all sport, click **Submit**.

Choose the applicable options on the Assign Coach to Team page, click Save or Add Another to add additional coach(s).

VARSITY TEAM INFORMATION (ROSTERS)

Attention Athletic Directors/Coaches: It is very important that you enter your entire Varsity roster into CIFSSHome (www.cifsshome.org) no later than **FRIDAY, JANUARY 19, 2024**.


Log in @ www.cifsshome.org (If you do not have a log in & password as a coach, check with your Athletic Director).

- Click on the "**Teams**" tab, click on "**Teams Manager**", click on **Wrestling, Boys/ Wrestling, Girls** "", select 

You can UPLOAD your roster using the instructions below (1) or you can enter each player one by one (2).

Required roster information for Wrestling, Boys/ Wrestling, Girls is: First Name, Last Name, Birth date, Year & Eligibility

(1) To ADD roster players one by one:

- Click on  and complete fields required for Wrestling.

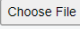

(2) To Import a Roster using an Excel sample file:

- Download the [sample file](#) and delete the "contents only".


- Copy and paste or type your roster information into the file as the contents and save the file to your computer.

- Only an excel file ([xls](#)) can be uploaded that is the exact same format as the sample file.

- Columns for information not required for your sport may be left blank, but the HEADER INFORMATION MUST REMAIN EXACTLY AS THE SAMPLE. **Required Columns for Wrestling are: First Name, Last Name, Birth date, Year & Eligibility**

- Click on to find your file,  then click  on

- To confirm the roster has been uploaded, your players' names will be uploaded in the "**Official Roster**" section.

- Click on the  next to the player's name to view each player's information.

AT LARGE APPLICATION – MUST HAVE .500 RECORD OR BETTER

Attention Athletic Directors/ Coaches: Please follow the instructions below to enter your school as an At Large Entry for Dual Wrestling. The At Large Application is to be submitted by your school no later than **TUESDAY, JANUARY 23, 2024 NO LATER THAN 10:00 P.M.**

Log in @ www.cifsshome.org (If you do not have a log in & password as a coach, check with your Athletic Director). Once you are logged in:

- On the left panel, click on the "Forms" tab, select "At Large Petition", Select "Wrestling!" from the drop down menu, then click "Add"

Please be sure that your Schedule is updated in CIFSSHome as this is where the information for the At Large Petition will be created.

**TEAMS ARE REQUIRED TO PRESENT
ALPHA SHEETS AT ALL MATCHES.**



CIF SOUTHERN SECTION PLAYOFF/CHAMPIONSHIP REQUIREMENTS - ALL TEAMS AND HOST SITES 2023-2024



Rosters & Scores:

- Complete schedules are to be submitted to CIFSSHOME prior to each season.
 - Update scores following every contest direct to CIFSSHOME
- Additional directions on accessing CIFSSHOME are included in this document.

TV/Web/Radio Rights:

Any TV or streaming webcast (video or audio) or radio transmission of a CIF-SS playoff or championship event requires a contract and rights fees through the CIF-SS office prior to the contest. The only 'exceptions' are: Games broadcast via The NFHS Network, Bally Sports West or Bally Sports SoCal.

'Official' Championship Souvenirs:

The exclusive vendor for CIF Southern Section Championship souvenirs (t-shirts, scarfs, pins, beanies, hats, etc...) is our long-time partner *CIF T-shirts*. These are the official items sold each year per sport. You are likely familiar with their annual shirts at the finals. You can order team and individual items through them at www.ciftshirts.com.

Official Ball Required:

Only the approved official ball in each ball sport may be played by either school during CIF-SS playoff contests. Violation of this rule will result in loss of your next home playoff game. The current Official Ball list for each sport is included and available at www.cifss.org in the "Resources" drop down. This policy has been in effect since 2002.

Gatorade Only:

Only Gatorade jugs, cups, bottles, ice chests may be used or visible during any CIF-SS playoff contest. (No Powerade, Body Armor, etc). The only acceptable alternative is a plain-wrap or Igloo labeled products. This rule does not apply to the actual liquid distributed to athletes. This policy has been in effect since 1995.

CIF-SS on Souvenirs:

The 'CIF Southern Section', 'CIF-SS', 'Southern Section' and 'CIF' marks and logos are registered trademarks with the State of California. Schools may only use the CIF Southern Section marks on rings, patches and banners, by doing business with a CIF-SS licensed vendor. **Schools may only use the CIF Southern Section marks on apparel and other souvenir items exclusively through ciftshirts.com. Schools creating items with CIF-SS registered marks from a non-licensed vendor will face sanction and/or will be required to purchase any unsold shirts/items at the Championship Final.** A list of the currently licensed vendors for these products is included and regularly updated on www.cifss.org.

Please note: The use of only "CIF" is strictly prohibited per the State CIF registered trademark. The "CIF", is not just the CIF Southern Section. Only those teams in State regionals, bowl games and individual sport finals actually qualify to use CIF without Southern Section attached. Any such use must be approved in advance by the CIF State office.

Host Site Requirements:

- Playoff Tickets:** (This pertains to revenue sports of basketball, football and volleyball): It is mandatory to sell tickets for admission to all CIF-SS playoffs and championship contests. Through the CIF-SS partnership with GoFan, all playoff tickets will be made available online for digital purchase and presented electronically at the event gate for entry. Patrons can purchase in advance via gofan.co, via private links made available by the participating schools or via QR code at the entry gate of the playoff event. All playoff revenue will be sent directly to CIF-SS. Both the host and visiting schools will be required to submit a financial/expense report following each playoff game in an effort to receive reimbursement for game expenses and revenue share split in the case of a profit game.
- CIF-SS/FORD Banner:** It is a requirement of each host school (including off-site) that the CIF-SS/Ford Championship banner be displayed at every playoff home game in football and the gymnasium sports post football season (or on the electronic signage where schools/venues do not display banners). If you need a banner please contact jackieg@cifss.org
- Gatorade:** It is a requirement of each school use only Gatorade product/jugs/cups/squeeze bottles during CIF-SS championship events. No other competitive product shall be used. Water can be placed in Gatorade merchandise.
- PA Announcements:** As a host of a CIF-SS playoff contest, the CIF-SS announcements take precedence over the host school's messaging and must be read in entirety at each playoff contest. Home schools are the host of a CIF-SS event in the playoffs. For contractual requirements, please read all the provided PA's each contest. PA's for each sport can be found on cifss.org under the designated sports page.
- Media Credential Access:** Accredited working media should be given admission to all playoff games by showing their CIF-SS Media credential.



**CIF SOUTHERN SECTION PLAYOFF/CHAMPIONSHIP
ADDITIONAL/CUSTOM POST SEASON AWARDS
2023-2024**



PARTICIPATION CERTIFICATES: Each member of a team participating in the CIF-SS playoffs can receive a Participation Certificate. These certificates will be downloaded and printed solely by your school. The certificate is in a 'Type-In' format and may be downloaded from the CIFSSHOME website under **AWARDS**.

NEED ADDITIONAL AWARDS: Feel free to order directly.

Plaques: If your team won or was a finalist in a CIF-SS championship and you need to purchase any additional champion/finalist plaques contact **All American Trophy by contacting at (323) 725-1962.**

**“Champion”, “Finalist”
“ALL-CIF” Patches** Champion, Finalist and ALL-CIF patches must be exclusively ordered through **JL Custom Jackets and Patches at www.jlcustomjackets.com, (951) 867-3200, or email lindseyjlcustomjackets.com.**

CUSTOM AWARDS/ RINGS/BANNERS/APPAREL SOUVENIRS USING CIF-SS:

Schools often seek to create custom patches, gym banners and championship rings that include both the school and CIF-SS marks/logos/names. Example: ‘ACME BOYS BASKETBALL 2022 CIF-SS CHAMPIONS’. Schools may create these items using CIF-SS marks only through a CIF-SS licensed vendor.

CIF-SS ‘registered’ trademark: The “CIF Southern Section”, “CIF-SS”, “Southern Section” and “CIF” marks and logos are registered trademarks with the State of California. Schools may only use the CIF Southern Section marks on rings, patches and banners by doing business with a CIF-SS licensed vendor. Schools creating items with CIF-SS registered marks from a non-licensed vendor will face sanction and/or will be required to purchase any unsold shirts/items at the Championship final if similar non-licensed items appear at the contest. A list of the currently licensed vendors for these products is included and regularly updated on www.cifss.org.

Please note: The use of only “CIF” is strictly prohibited per the State CIF registered trademarks. Only those teams in State regionals, bowl games and individual sport finals actually qualify to use CIF without Southern Section attached. Any such use must be approved in advance by the CIF State office.

CIF-SS vendors who are licensed to create custom items for schools that include CIF-SS:

Championship Patches (circle shape) Playoffs or Prelims, Finals Patches (shape of a shield) for participation in Cross Country, Track & Field or Swimming Finals, Masters Patches (oval shaped) for participation in a Masters Track & Field or Wrestling event and Wrestling Dual Meet (rectangle shaped) are sold “ON-SITE” by the CIF-SS vendor. Additional patches post event can be ordered through any of the licensed CIF-SS patch vendors:

•Chenille Patches

JL Varsity Jackets & Patches	www.jlcustomjackets.com	(951) 867-3200
CIF Tshirts	www.cifsstshirts.com	(951) 789-5858
C&L Custom Jackets	www.cljackets.com	(714) 828-6900
Embroidery & More	www.embroideryandmoredesign.com	(951) 471-5200
Fancy Stitchin'	www.fancystitchin.com	(951) 656-6505
Funky Monkey Designs	www.getfunkymonkey.com	(909) 592-2622
Logo Joe's	https://logojoes.net/	(951) 461-0388
PC & C Embroidery	https://pccembroidery.com/	(909) 403-4558
We Got 'Em Tees	www.wegotemtees.com	(760) 983-6087
TAS - The Advertising Specialists	www.tassigns.com	(626) 966-4770

- **Custom Banners/Souvenirs** Your school may now create custom items that include the CIF-SS mark or logo (championship banner, banners for your gym, etc...) through a licensed CIF-SS vendor (and their specialty).

Integrity Design www.IntegrityDesignUSA.com Larry Shoppa (855) 341-8817

• Rings

J. Lewis Small	www.jlewissmall.com
Jostens	www.jostens.com
Signature Style Jewelry	www.signaturestylejewelry.com
Baron Championship Rings	https://baronrings.com/
Herff Jones	https://www.herffjones.com/

PROTECT YOUR SCHOOL TRADEMARKS: The CIF Southern Section strongly suggests you double-check the status of *your school* licensed/registered marks and logos now. Some schools have permanently lost control of others selling their merchandise with no royalty or approvals because the proper State of California licensing/registering process had not previously occurred or been enforced.

For additional vendors licensing information, please contact CIF Southern Section, Director of Marketing, Jackie Gibson at jackieg@cifss.org or 562-493-9500.



BRONCO



F-150 RAPTOR



MUSTANG SHELBY



MUSCLES. SPEED. AGILITY. SMARTS.

OUR VEHICLES. OUR ATHLETES.



THE SOUTHERN CALIFORNIA FORD DEALERS
PROUDLY SUPPORT SO CAL HIGH SCHOOL ATHLETICS.



EXPLORER



RANGER



BRONCO SPORT