

CIF SOUTHERN SECTION BUSINESS PARTNERS

Supporting Tomorrow's Stars Today

SchoolSports.com

Presenting Partner and Official High School Web Site of the CIF-SS.

Marines
The Few. The Proud.

Official Armed Forces Branch of the CIF.

24 FITNESS
TeamSports

Official Fitness Center of the CIF-SS.

Wilson

Official Ball of the CIF-SS.

Marriott

Official Hotel of the CIF.



Official CIF-SS Health Care Provider of Los Angeles County.



Official Sports Medicine Provider of the CIF-SS.



Official Sporting Goods Team Dealer of the CIF-SS.



Official Thirst Quencher of the CIF-SS.

Pacific Bell
SMART Yellow Pages

Official Yellow Pages of the CIF-SS.

Mission Hospital
ST. JOSEPH

Official CIF-SS Health Care Provider of South Orange County.

PowerBar

Official Fuel of the CIF-SS.



Official Baseball & Softball Uniform of the CIF-SS.



Official Championship Patch of the CIF-SS.



Official Sportswear of the CIF-SS.

HERFF JONES
RECOGNITION - EDUCATION - MOTIVATION

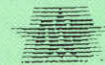
Official Ring and Awards Provider of the CIF.



Official Badminton Supplier of the CIF-SS.



Co-sponsor of CIF-SS Academic Awards Program.



Co-sponsor of Coaches Education Clinics.



Co-sponsor of Shake for Sportsmanship Awards.

CIF Southern Section
11011 East Artesia Blvd.
Cerritos, CA 90703
(562) 860-2414

DATED MATERIAL

NON-PROFIT ORG
U.S. POSTAGE
PAID
Artesia, CA
Permit No. 218

CIF-SS BULLETIN



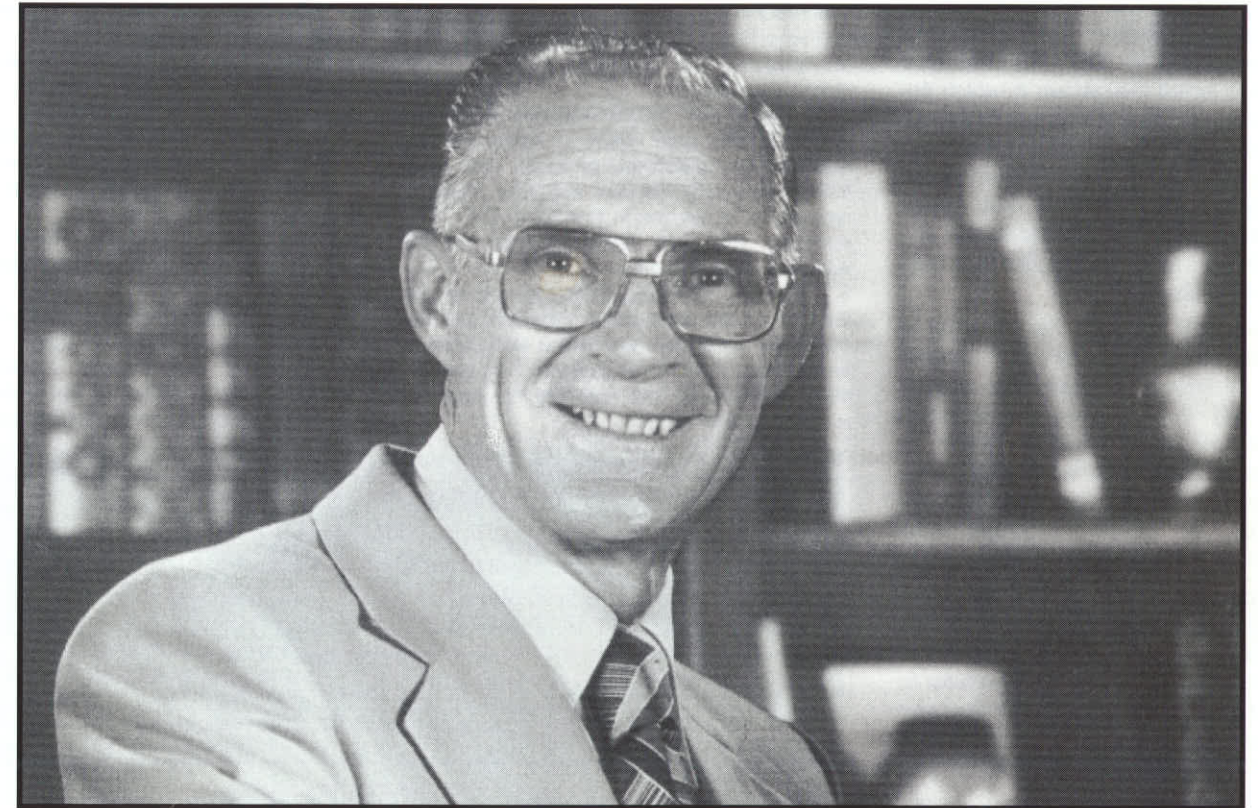
Southern Section

Academics • Integrity • Athletics



VOL. 64, NO. 2

WINTER 2001-2002



DR. HANFORD RANTS 1923-2002



For Full CIF-SS Fall Playoff Results

See pages 10-13, 15-18.

Serving High School Athletics
Since 1913

PRESIDENT'S MESSAGE



Top Ten Tips for Principals

By Clark Stephens, President
CIF-SS Executive Committee

Principal Jones is shocked. He's just been informed that a student has been playing on the basketball team who is not eligible according to CIF rules and he's expected to forfeit the games in which the student played. The more he finds out about it the more his lunch talks to him. How can this happen? He's heard about this happening to others, but never thought it would befall his school. Got any advice? Here are some tips that will help any administrator.

1. Believe that your role as principal is crucial to the success of your athletic program. I know you have an athletic director and I'm sure he/she is quite competent. However, while you must let the athletic director do his/her job, you have great influence over the athletic culture of the school, including how everyone follows the rules.

2. Prepare yourself by building your knowledge about CIF and your school's duties and responsibilities. The Blue Book is your friend. Get a copy and refer to it often. I know there's a lot of content and it's not always written in a user friendly way, but it contains the information you need.

3. Pay particular attention to the parts of the Blue Book relating to eligibility. These rules are modified from time to time, but the basics stay the same. Consider a transfer student ineligible until you know for certain that the CIF office has declared eligibility.

4. Attend and participate in league meetings. I know, you have enough meetings to go to. However, the knowledge you accumulate and the relationships you make at the league meetings will pay dividends in the future.

5. Make arrangements to meet the opposing team's principal at some public location (at center court or on the sidelines) before the game to shake hands and exchange greetings allowing everyone to see that, at least at the

See **PRINCIPALS** page 19.

CIF-SS COUNCIL MEETING MINUTES October 18, 2001

The October meeting of the CIF-SS Council was called to order by Clark Stephens, President at 9:07 a.m. on Thursday, October 18, 2001, at The Grand in Long Beach. All leagues were present.

1. **INTRODUCTIONS** – Commissioner Jim Staunton introduced Pat Chiappetta, new administrative assistant to the Commissioner replacing the retiring Kay Larson.

2. **ADOPT AGENDA** – It was moved, seconded and passed to adopt the agenda.

3. **MINUTES** – It was moved, seconded and passed to approve the minutes of the CIF-SS Council meeting of April 26, 2001.

4. **SPECIAL PRESENTATION** – Jim Staunton, Commissioner, reported on the Southern California PGA Foundation donation of \$15,000 to support the boys' and girls' golf championships.

5. **STATE CIF OUTSTANDING SERVICE AWARD AND LIFE PASS** – Karen Hellyer, Assistant Commissioner, presented the State CIF Outstanding Service and Life Pass in recognition of service to the State CIF. The recipient was Bill Clark, former CIF-SS Assistant Commissioner.

6. **PUBLIC HEARING SESSION** – Mary Lou Guy and Jim Brownfield reported on the California Coaches' Association Hall of Fame and Coach of the Year Banquet. In addition they emphasized the benefits to coaches joining the organization.

7. **2002-2006 Releaguings** – Susana Arce, Releaguings Chairperson, presented the respective proposals for the 2002-2006 releaguings cycle. Following discussion, all area proposals were approved.

8. **CIF STATE FEDERATED COUNCIL OCTOBER ACTION ITEMS** – Clark Stephens, President of the Council, presented the following agenda items for the October CIF State Federation Council meeting in order to give Southern Section delegates voting direction.

A. Revision of by-law 200E(2), student eligibility - penalty for provision of false or fraudulent information - vote to support

B. Proposed change to weighted voting - vote to support.

C. Revision of Article 3, Section E - clarifies diversified representation of allied organizations - vote to support.

D. Wrestling 40 Match Rule - CIF Section Team Dual Championship Tournament will not count towards 40 match maximum - vote to support

E. Wrestling 40 match Rule – forfeits do not count towards the 40 match maximum - vote to support.

9. **STATE FEDERATED COUNCIL OCTOBER NON-ACTION ITEMS** – Clark Stephens, President of the Council, presented the following agenda items for the October State See **COUNCIL MEETING** page 19.

California Interscholastic Federation Southern Section

11011 Artesia Blvd.
Cerritos, California 90703
(562) 860-2414 -- FAX (562) 860-1692

OFFICERS

Clark Stephens, Principal
Liberty Christian High School, President

Paul Breit, Principal
Ganessa High School, President-Elect

Dr. Ken Gunn, Principal
Walnut High School
Past-President/Mt. Sac Area Rep.

Susana Arce, Assistant Principal
Nordhoff High School
Treasurer

James Staunton, Ed.D., Commissioner of Athletics

BULLETIN EDITOR

Thom Simmons, Sports Information Director

EDITORIAL ASSISTANT

Sharon Hodge, CIF-SS Secretary

Bulletin published three times yearly by CIF Southern Section

RULE REVIEW

(Continued from page 7)

seems to be on the rise. Some coaches have developed a reputation for "getting on the officials" and even go so far as to draw in the crowd to join them. There are those coaches who try to manipulate officials psychologically, hoping to gain that slight advantage when it comes to calling the "close ones." These are even those who will attempt to create some form of intimidation in order to gain the advantage.

Trying to intimidate an official may have some advantages. Consciously or unconsciously, an official may give the intimidators a slight edge. It is sad that threats may happen, but we are all human. Being and official is a strange activity. The only way officials know they have done a good job is to be ignored. A good game is one without a fuss. This runs contrary to what most of us call a rewarding job. On one level, officials may be far more dedicated to the sport than the fan, coach, or even the player. There are few rewards, minimal accolades, and the potential for great abuse. They have taken it upon themselves to be entrusted with the control of the game. They are to be saluted for assuming that responsibility.

In order for officials to be truly recognized, however, more needs to be done in the form of support. In Japan, baseball players bow to the umpire, in the United States we kick dirt on them. This is not to imply officials are always right, that they never make mistakes, or that they are flawless.

Being human, we are all subject to mistakes. Regular scrutiny by peer and inspection committees help to minimize these. The fact is that close inspection of most officials indicates the vast majority of calls are, in fact, correct. Only a few calls can be considered questionable.

Greater support needs to come in the form of more severe punishment for those who choose to threaten the game by discrediting the interpreter of the rules – the official. Longer suspensions, stiffer penalties and more severe reprimands are in order so that the official can know he/she is supported. On a more subtle level, coaches and athletes who bash officials are subjecting them to psychological abuse. To "get all over an official" is to say that person is either stupid, inept, biased or just plain cheating. This is perhaps the most humiliating part of being involved on this end of sports.

From a psychological standpoint, official bashing provides an interesting insight into the coaches. One-way of diverting the blame for poor performance from the individual,

team or coach is to blame the official. This phenomenon, called displacement, shifts the burden from the actual source to someone else. Admittedly, the officials may make mistakes, but a chronic complainer is one who is not willing to assume responsibility.

Everyone has a memory or two about an official. The called third strike that was debated, the catch that was inbounds that everyone thought was out of bounds, or the interference call that you felt was just too close to make such an important decision – all memories that we can look back on and say "what if." What we might look on instead is the person with courage to take the game into his/her hands, and temporarily stop the game in order for it to be played fairly. Instead of bashing the individual, we ought to take a few minutes to admire and respect someone with those special qualities. We continually admire jocks and coaches; maybe it takes more to be an official.

FORFEITURE

(Continued from page 2)

dards and would like to participate? They would rightfully ask to be placed instead of the team that suffered the forfeit.

That answer rarely resonates with the parent who insists that his child should not suffer for the mistakes of others. It is a reasonable statement if your focus is to protect the child from life's realities. It isn't if you believe that sport teaches a number of lessons, some good and some bad. We like to say that sports is a microcosm of life, that it reflects a number of experiences in a competitive environment. The good news is that suffering a penalty during sports participation pales in comparison to what we must suffer as adults. It doesn't take long to learn that life is not always fair. It is O.K. if our teenagers learn this lesson too.

Adversity is a mighty teacher. At one time or another, we must all face adverse conditions and suffer consequences. What we need is for our coaches administrators and parents, during times of adversity, to teach lessons of understanding. Placing blame and venting anger accomplish nothing. What is really important is what is learned; that playing by the rules is important for its own sake. I would not want to visit a rules violation on any school, but they happen. When they do we must all re-affirm that our rules, while not perfect, function to bring order to athletic competition.

PRINCIPALS

(Continued from page 2)

administrative level, the schools are on good terms. Lead by showing good sportsmanship and others will follow.

6. Send your coaches to the CIF's Coaching Education Program. They'll appreciate that you care enough and support them enough to send them.

7. Monitor the CIF websites. State CIF www.cifstate.org and Southern Section CIF www.cifss.org. These sites get better all the time and they are there for you to use. The National Federation of High Schools is a good resource as well, www.nfhs.org.

8. Get to know the administrators at the CIF office. The commissioner and his assistants are there to serve you. They can help you with ideas and encouragement as you lead your school's athletic program.

9. Find a way to have a good time at your school's sporting events. It's a great time to get to know your parents and students so take advantage of it. They all know you are there and they appreciate your support.

10. Capitalize on the impact your sports program makes on your school. It's the sizzle on the steak. In spite of the occasional headaches, your sports program has a great impact on the lives of hundreds of young people giving them memories that will last a lifetime. It's worth the attention you give it.

Principal Jones worked his way through his eligibility problem and his program was ultimately stronger. He changed some procedures to make sure the problem did not happen again. He found that the more he got involved the more he enjoyed the fact that his sports program contributed so much to the lives of his students.

COUNCIL MINUTES

(Continued from page 2)

Federated Council meeting:
A. Adoption of 16 operating principles as a separate by-law in Article 1, Number 12.
B. Revision to Article 7, By-law 70, change in status or in work place, vacancy.
C. 214 Transfer and scholastic eligibility for transfer students.

10. **SUBURBAN LEAGUE PROPOSAL** – Kim Brooks, Athletic Director at La Mirada HS, presented a proposal to increase allowable number of contests in the sport of baseball from 20 to 30 (Rules 1505.1, 1507, 1508).

11. **SUNSET LEAGUE PROPOSAL** – Clark Stephens, President of the Council and Rob Wigod, Assistant Commissioner, reviewed a proposal to eliminate the 10-run rule in baseball.

12. **PRESIDENT'S REPORT** – Clark Stephens, President of the Council, reviewed football officials' concerns regarding sportsmanship.

13. **COMMISSIONER'S REPORT** – Jim Staunton, Commissioner, reported on a lawsuit, officials' recognition, CIF-SS Council folder, Region 7 and 8 Conference, hardships filing fee, CIF-SS Office building, Athletic Administrators' Symposium and the September 11 tragedy in regards to postponed or canceled contests.

14. **TREASURER'S REPORT** – Susana Arce reported the 2000-01 audit is complete and will be presented to the Executive Committee at the November 14, 2001, meeting.

There being no further business to come before the Council, the meeting was adjourned at 11:25 p.m.

Submitted by:

KAREN HELLYER
ASSISTANT COMMISSIONER

Approved by:

DR. JAMES STAUNTON
COMMISSIONER OF ATHLETICS

CIF SOUTHERN SECTION - TOYOTA 2001 BOYS/GIRLS CROSS COUNTRY RESULTS

DIVISION I - BOYS

Team

1. Canyon/Canyon Country - 72
2. Long Beach Poly - 127
3. Dana Hills - 146
4. Royal - 148
5. El Toro - 157

Individual

1. Luke Llamas, Canyon/CC - 14:51.1
2. Erik Maldonado, Don Lugo - 14:53.6
3. Jameson Mora, Canyon/CC - 15:03.8
4. Mike Poe, Etiwanda - 15:05.4
5. Ryan Morgan, Canyon/CC - 15:07.6

DIVISION II - BOYS

Team

1. Rubidoux - 62
2. Katella - 130
3. Orange - 137
4. Sultana - 142
5. Valencia/Placentia - 159

Individual

1. Michael Haddan, Woodbridge - 14:54.7
2. Juan Robles, Valencia/Placentia - 15:01.5
3. Philip Kruttschnitt, Dos Pueblos - 15:13.1
4. Juan Escalante, Katella - 15:14.6
5. David Napper, Cypress - 15:17.1

DIVISION III - BOYS

Team

1. Barstow - 36
2. Rim of the World - 90
3. San Luis Obispo - 103
4. Estancia - 115
5. Nordhoff - 172

Individual

1. Humberto Rojas, Estancia - 15:25.1
2. Kalan Ray, Barstow - 15:34.9
3. Adam Rodriguez, Barstow - 15:39.1
4. James Tawney, Barstow - 15:41.3
5. Anthony DeRouen, Yucca Valley - 15:43.9

DIVISION IV - BOYS

Team

1. Oak Park - 72
2. Fillmore - 93
3. Morro Bay - 124
4. Big Bear - 126
5. Salesian - 155

Individual

1. Steve Natividad, Orange Lutheran - 15:35.5
2. Jorge Jabaz, Orange Lutheran - 15:42.3
3. Bryan Rayburn, Morro Bay - 15:48.5
4. Mohamed Trafteh, Duarte - 15:53.6
5. Art Avitia, Big Bear - 15:58.0

DIVISION V - BOYS

Team

1. Woodcrest Christian - 61
2. Flintridge Prep - 104
3. Brentwood - 112
4. Desert Christian/Lancaster - 154
5. Apple Valley Christian - 158

Individual

1. Henry hagenbuch, Cate - 15:08.2
2. Chad Galbreth, Mammoth - 15:36.8
3. Jonathan Reed, Santa Clara - 16:06.5
4. Grant Nunnally, Woodcrest Chr - 16:15.5
5. Jesse Kelinjan, Ontario Chr - 16:28.4

DIVISION I - GIRLS

Team

1. Dana Hills - 111
2. Thousand Oaks - 132
3. Ayala - 146
4. Canyon/Canyon Country - 148
5. Peninsula - 149

Individual

1. Emily Vince, Peninsula - 17:06.2
2. Anna Attard, Marina - 18:07.1
3. Brenda Stevens, Canyon/CC - 18:08.8
4. Bethany Nickless, Fountain Vly - 18:10.8
5. Maryann Pynchon, Edison - 18:13.5

DIVISION II - GIRLS

Team

1. Woodbridge - 57
2. Sultana - 131
3. Cypress - 140
4. Brea Olinda - 142
5. Ventura - 148

Individual

1. Jenny Sears, Woodbridge - 18:13.6
2. Ava Jones, La Habra - 18:19.8
3. Meghan Bellitti, Woodbridge - 18:31.0
4. Kelsey DeLaGardelle, Sultana - 18:32.0
5. Kristen Berglas, Woodbridge - 18:33.0



DIVISION III - GIRLS

Team

1. La Canada - 74
2. Corona del Mar - 77
3. Northwood - 110
4. St. Joseph/Lakewood - 121
5. Nordhoff - 130

Individual

1. Julie Allen, Corona del Mar - 17:41.7
2. Becky Cummins, Corona del Mar - 18:24.6
3. Christina Jimenez, Granite Hills - 18:42.9
4. Jennifer Clarke, Atascadero - 18:51.9
5. Emily Farr, La Canada - 18:59.8

DIVISION IV - GIRLS

Team

1. Oak Park - 68
2. Orange Lutheran - 70
3. Maranatha - 92
4. Harvard-Westlake - 142
5. La Reina - 150

Individual

1. Lindsay Flacks, Harvard-Westlake - 18:09
2. Laura Meyer, Maranatha - 18:31.2
3. Christine Bolf, Notre Dame Acad. - 18:41.5
4. Rebekah Ernst, Carpinteria - 18:47.5
5. Lauren Morales, Oak Park - 18:53.6

DIVISION V - GIRLS

Team

1. Desert Christian/Lancaster - 66
2. Chadwick - 78
3. Ontario Christian - 125
4. Flintridge Prep - 132
5. Pasadena Poly - 154

Individual

1. Kristin Cohoon, Chadwick - 18:13.5
2. Tegni Swain, Oakwood - 19:20.6
3. Jennifer Wright, Desert Chr/L - 19:22.8
4. Alison Brown, Chadwick - 19:30.8
5. Anna Thobodo, Arrowhead Chr - 19:53.2

SOUTHERN SECTION MARKETING UPDATE

SPORT CHALET JOINS CIF-SS AS OFFICIAL SPORTING GOODS



The nation's most successful and Southern California's most prominent sporting goods chain, Sport Chalet, have joined the CIF-SS as the official sporting goods through the 2004 school year.

As Southern California's leading sporting goods retailer the affiliation with CIFSS was a natural fit. Founded in La Canada in 1959, Sport Chalet has grown to 26 stores that encompasses a regional map mirroring the Southern Section.

"Having grown up in Southern California as one of six children, participation in High School sports from tennis to track and field, was a daily occurrence." Said Claudia Reich Senior VP of Marketing, Sport Chalet Inc. "The contribution of CIF to the local High Schools throughout Southern California continues from one generation to the next. I can honestly speak for the entire Sport Chalet organization when I say we are thrilled to be a part of that process."

Originally a single sporting goods store with unique specialized services for skiing, scuba and camping, Sport Chalet has grown to be a major full-service retailer for individual and team sport needs. The expansion of stores, however, has not sacrificed Sport Chalet's vision of quality service. On the contrary, as the stores grow and profits rise, Sport Chalet's services have flourished, paving the way for SportChalet.com-the premiere online stop for sports enthusiasts.

Of benefit to the CIF-SS members, Sport Chalet has a Team Sales department in each store that will provide coaches and athletic directors significant equipment price savings and personal service at a store location near their school.

Sport Chalet founder, Norbert Olberz, strongly believes in giving back to the community. Sport Chalet is a community-oriented organization and retail establishment that takes pride in actively participating in many local charitable activities, focusing on quality of life for children, adults, and natural environments.

Sport Chalet Charities include YMCA, Boy Scouts of America, Girl Scouts of America, Boys and Girls Club, and The Access Fund, to name a few. In addition, our staff has participated in the Adopt-a-Highway program. Currently, we're involved in local SCUBA Beach Cleanup efforts for the Southern California community, as well as a recycling program for all our stores and warehouses, recycling approximately 35 tons of cardboard a month.

We look forward to building our new relationship with Sport Chalet and encourage schools to contact the Team Sales representative at any of the 27 the stores nearest your school. Team Sales representatives can provide much better pricing on your team equipment and supplies than most small stores and retail outlets.

COMMISSIONER'S CORNER

Forfeitures



**By James Staunton, Ed.D.
Commissioner of Athletics**

To any athletic administrator, the word forfeit is simply the last thing he or she wants to hear, much less report to CIF. Forfeits mean giving up a game or more that team members fought to win, worked hard for, and believe that they deserve. Coaches blame administrators, parents blame CIF and players ask themselves how a technicality could cost them so much hard work and effort. They become discouraged and angry. Some never forget.

Forfeitures result from the discovery that a player, who was not eligible, played for his/her team. The purpose of our rules is to ensure that our players all meet a broad set of guidelines that relate to residential eligibility, age, grade standards, credits and physical qualifications. Sometimes an error seems insignificant and parents question why their kids must sacrifice because of a paperwork mistake made by an adult. The answer to that question is complex, and seldom results in agreement.

Perhaps the best answer we can propose is that everyone involved in CIF has agreed to abide by our rules. The core issue is that all athletes must be declared eligible prior to competition. For some students paperwork must be filed. No athlete is eligible until the paperwork is processed. Why paperwork? Because every form we use requires the signatures of administrators at the school the student is leaving, and the new school. This ensures that everyone involved in the transfer is aware of the student's movement and can verify his/her eligibility. Some students may attempt to circumvent the rules; it is still the responsibility of the school to be diligent in determining if the statements of the student are true and correct. If it is discovered at a later date that the student wasn't eligible under our rules, the student is sanctioned as well as the school.

It may seem like too much to take a team out of playoffs because of an ineligible player, as many people argue, but what about the qualified team, or teams that met our standards? See **FORFEITURE** page 19.

MINUTES OF THE EXECUTIVE COMMITTEE MEETING August 18, 2001

The August meeting of the CIF Southern Section Executive Committee was called to order at 8:00 a.m. by President Clark Stephens at Juniper Springs Lodge, Mammoth Lakes, California. All members were present, with the exception of John Dahlem, Tom Davis, Bob Dreiling, and Karen Hellyer.

1. ADOPT AGENDA – It was moved, seconded and passed to adopt the agenda.

2. MINUTES – It was moved, seconded and passed to approve the minutes of the CIF-SS Executive Committee meeting of June 6, 2001.

3. ACTION ITEMS –

A. SELECTION OF FEMALE AT-LARGE REPRESENTATIVES TO THE C.I.F. COUNCIL – After discussion, and a vote, the following people were selected as At-Large Representatives to the C.I.F. Council: Tracy Brennan, Rhonda Fouch, Terri Mendoza, Carol Osbrink, and Barbara Willibrand. Sally Chou was selected as an alternate.

4. NON ACTION ITEMS –

A. Reports and discussion from staff –
1) Assistant Commissioner Rob Wigod reported on the following items: Officials Fees and the Summer Dead Period.

2) Commissioner Jim Staunton gave an update on the search for a new office building for the C.I.F. Office.

5. REPORT SESSION –

A. President's Report – President Clark Stephens reported on the National Federation Summer Meeting, as did the other members of the Executive Committee who attended.

B. Commissioners Report – Commissioner Jim Staunton reported on the following:

1. The National Federation Summer Meeting.
2. New legal counsel has been selected by the State C.I.F.

3. A conflict on September 19th which will require him to miss the Executive Committee meeting scheduled on that date.

4. Distributed information on the Model Coach Program.

5. Distributed the marketing update.

C. TREASURER'S REPORT – Reported that there was a budget surplus for the 2000-2001 year.

D. COMMITTEE MEMBER REPORTS –

1. Northern Area – Outgoing Northern Area Representative Susana Arce reported on her visitation to a new member school, Pacifica High School in Oxnard. New Northern Area Representative Donn Clickard reported on the Character Counts training he received, and that all sports groups in Atascadero are adopting the program.

2. Girls AD – Sharen Caperton thanked the office staff for Sponsor Appreciation Night.

3. Boys AD – Outgoing Boys AD Representative Donn Clickard thanked the C.I.F. Staff for the improved format of the 2001-2002 Blue Book. New Boys AD Representative Stan Ford reported on some feedback he had received from his constituents regarding the format of sport playoff bulletins and on the possibility of Sport Advisory Committees and Executive Committee recommendations being included on the agen-

das for C.I.F. Council meetings.

4. Superintendent – Dr. James Harris reported on his plans to improve communication to Superintendents.

5. School Board – Jeannine Martineau gave updates on Senate Bills 319 and 354, and the upcoming C.S.B.A. Conference in San Diego this November.

6. President-Elect – Paul Breit reported on his district's support for the Victory With Honor program and that 48 coaches have taken the Character Counts training.

7. Assistant Commissioner Paul Castillo reported on supervision requirements for student/athletes at championship events.

8. Assistant Commissioner Rob Wigod distributed information on heat-related problems for student/athletes and information on awards presentations for football championships.

There being no further business to come before the Executive Committee, the meeting was adjourned at 11:30 a.m.

Submitted by:

ROBWIGOD
ASSISTANT COMMISSIONER

Approved by:

DR. JAMES STAUNTON
COMMISSIONER OF ATHLETICS

MINUTES OF THE EXECUTIVE COMMITTEE MEETING November 14, 2001

The November meeting of the CIF Southern Section Executive Committee was called to order at 1:01 p.m. by President Clark Stephens at the C.I.F. Office. All members were present, with the exception of Bob Dreiling and Tony Ortega.

1. ADOPT AGENDA – It was moved, seconded and passed to adopt the revised agenda.

2. MINUTES – It was moved, seconded and passed to approve the minutes of the CIF-SS Executive Committee meeting of September 19, 2001.

3. ACTION ITEMS –

A. ACCEPTANCE OF THE AUDIT REPORT – The financial and management reports were presented by Roger Carmody, auditor. After discussion, it was moved, seconded and passed to accept the auditor's report.

B. REQUEST FOR MEMBERSHIP – After discussion, it was moved, seconded and passed to approve Indio Charter School and Los Osos High School for membership in the 2002-2003 school year, provided they complete an orientation at the C.I.F. Office.

C. PROPOSED REVISION OF BY-LAWS 214/510 – After discussion, it was moved, seconded and passed to send the form adopted by the state of Nevada to the C.I.F. Section Commissioners for their consideration in January.

D. STUDENT LEADERSHIP CONFERENCE – After discussion, it was moved, seconded and passed to send 2 students and 1 chaperone, or

3 students, if the chaperone's expenses are not going to be charged to the section, to the National Student Leadership Conference this summer in Indianapolis, Indiana.

E. COMMEMORATIVE/MEMORIAL PATCH FOR UNIFORMS – After discussion, it was moved, seconded and passed to allow for a sportsmanship patch, not to exceed 2 by 3 inches, to be worn on uniforms.

F. SPECIAL HEARING RULE 303 F (2) E, CHARTER SCHOOL – After discussion, it was moved, seconded and passed to return the Temecula Preparatory School's request for multi-campus status to the Southwestern League for their consideration.

G. NETANELI HIGH SCHOOL – After discussion, it was moved, seconded and passed to approve Netan Eli High School for membership in the 2002-2003 school year, provided they attend an orientation at the C.I.F. Office.

H. MISSION COLLEGE PREP – After discussion, it was moved, seconded and passed to remove Mission College Prep from the Southern Section in 8-Man football immediately, and for the 2002-2003 school year. After the 2002-2003 school year, Mission College Prep can apply for re-orientation.

4. NON ACTION ITEMS –

A. President Clark Stephens led a discussion on the upcoming State C.I.F. Strategic Plan.

5. REPORT SESSION –

A. Commissioners Report – Commissioner Jim Staunton reported on the following:

1. State Policies and Procedures Committee meeting he attended in October and the recommendations on Federated Council voting as stated on SSO56STATE.

2. Pursuing a hardship appeals proposal in which hardships that are sent to the C.I.F. Office that do not meet the criteria of unavoidable, unforeseeable, uncorrectable etc. would be sent back to the sending schools immediately. Also, the idea of a filing fee for hardships, which would be returned to the schools if the hardship is approved.

B. Committee Member Reports –

1. Citrus Belt Area – Dr. Tom Davis reported on the Section 7/8 meeting he attended in Montana.

2. Orange County Area – Dr. John Dahlem reported on the Section 7/8/ meeting he attended in Montana.

3. Girls A.D. – Sharen Caperton posed questions regarding a procedure to deal with sportsmanship violations committed by member schools, the status of the Golf Advisory Committee's review of the par issue and officials evaluation forms being made available to schools.

4. Activity Director – Terry Speir gave an update on the workings of the Ethics Committee and on her presentation at the Activities Direc-

See **MINUTES** on next page.

CIF SOUTHERN SECTION - TOYOTA 2001 WATER POLO PLAYOFF RESULTS

CIF SOUTHERN SECTION - TOYOTA 2001 WATER POLO CHAMPIONS

DIVISION I Long Beach Wilson

DIVISION II Corona del Mar

DIVISION III Whittier

DIVISION IV Santa Barbara

DIVISION V Riverside Poly

DIVISION VI Bonita

DIVISION I

First Round: Long Beach Wilson def. Mission Viejo 13-7; Irvine def. Crespi 5-2; Foothill def. Millikan 15-4; San Clemente def. Laguna Hills 16-5; Harvard-Westlake def. Santa Ana Valley 15-3; Newport Harbor def. Capistrano Valley 10-6; Villa Park def. Long Beach Poly 9-6; El Toro def. Notre Dame/Sherman Oaks 22-11.

Quarterfinals: Long Beach Wilson def. Irvine 14-4; San Clemente def. Foothill 5-3; Harvard-Westlake def. Newport Harbor 13-5; El Toro def. Villa Park 5-4.

Semifinals: Long Beach Wilson def. San Clemente 9-8; Harvard-Westlake def. El Toro 11-10.

Final: Long Beach Wilson def. Harvard-Westlake 9-7.

DIVISION II

Wild Card Round: Fullerton def. Ocean View 19-5.

First Round: Servite def. Fullerton 18-6; Esperanza def. La Habra 14-10; Edison def. Katella 21-6; Laguna Beach def. Saddleback 23-8; Los Alamitos def. University 10-3; Tustin def. El Dorado 12-4; Santa Margarita def. Sonora 11-9; Corona del Mar def. Cypress 19-1.

Quarterfinals: Esperanza def. Servite 6-5; Laguna Beach def. Edison 6-5; Los Alamitos def. Tustin 16-2; Corona del Mar def. Santa Margarita 20-3.

Semifinals: Esperanza def. Laguna Beach 9-8; Corona del Mar def. Los Alamitos 16-4.

Final: Corona del Mar def. Esperanza 12-6.

DIVISION III

Wild Card Round: San Marino def. El Rancho 9-8; Glendale def. Peninsula 9-3.

First Round: Mira Costa def. San Marino 16-1; Bell Gardens def. Claremont 12-7; La Serna def. Crescenta Valley 12-8; Whittier def. Montebello 17-8; El Segundo def. Arcadia 13-2; Upland def. Burroughs/Burbank 15-8; South Pasadena def. Glendale 14-9.

Quarterfinals: Bell Gardens def. Mira Costa 10-8; La Serna def. La Canada 9-7; Whittier def. El Segundo 10-5; South Pasadena def. Upland 8-4.

Semifinals: La Serna def. Bell Gardens 14-12; Whittier def. South Pasadena 8-6.

Final: Whittier def. La Serna 9-7.

DIVISION IV

First Round: Ventura def. Calabasas 17-6; Arroyo Grande def. Santa Ynez 10-8; Thousand

Oaks def. San Luis Obispo 14-8; San Marcos def. Rio Mesa 16-5; Righetti def. Carpinteria 13-5; Malibu def. Royal 11-5; Agoura def. Cabrillo/Lompoc 13-11; Santa Barbara def. Oxnard 14-8.

Quarterfinals: Ventura def. Arroyo Grande 15-7; San Marcos def. Thousand Oaks 9-8; Malibu def. Righetti 10-7; Santa Barbara def. Agoura 5-4.

Semifinals: Ventura def. San Marcos 9-4; Santa Barbara def. Malibu 10-8.

Final: Santa Barbara def. Ventura 11-7.

DIVISION V

Wild Card Round: Palm Springs def. San Bernardino 13-11; Jurupa Valley def. Eisenhower 11-9.

First Round: Riverside Poly def. Palm Springs 31-2; Hemet def. La Quinta/La Quinta 15-12; Etiwanda def. Redlands East Valley 20-6; Yucaipa def. M.L. King 19-4; Arlington def. Pacific 20-8; Redlands def. Alta Loma 20-8; Murrieta Valley def. Rancho Cucamonga 10-2; Palm Desert def. Jurupa Valley 17-5.

Quarterfinals: Riverside Poly def. Hemet 27-4; Etiwanda def. Yucaipa 9-6; Arlington def. Redlands 11-6; Palm Desert def. Murrieta Valley 15-11.

Semifinals: Riverside Poly def. Etiwanda 15-3; Palm Desert def. Arlington 9-7.

Final: Riverside Poly def. Palm Desert 14-13.

DIVISION VI

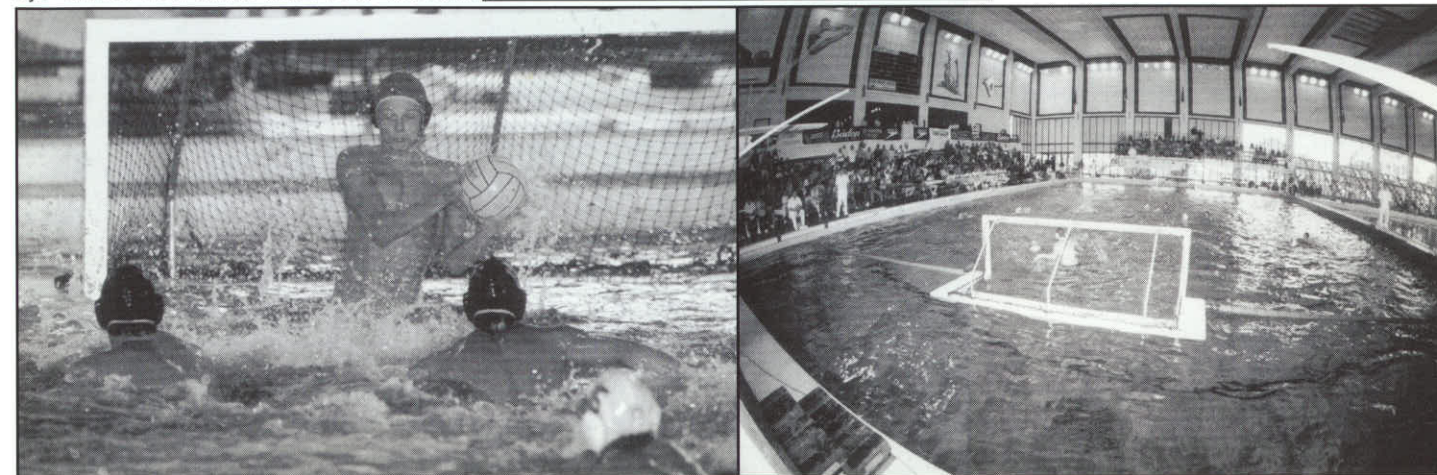
Wild Card Round: Rancho Alamitos def. La Puente 13-2; Ayala def. Garden Grove 13-3; Flintridge Prep def. Gahr 13-9; Western def. Downey 10-8.

First Round: Damien def. Rancho Alamitos 28-4; Valencia/Placentia def. Cerritos 9-8; Pasadena Poly def. Workman 16-3; Los Altos def. Ayala 13-8; Brea Olinda def. Flintridge Prep 13-5; La Quinta/Westminster def. Wilson/Hacienda Heights 7-5; Rowland def. Chadwick 9-8; Bonita def. Western 17-4.

Quarterfinals: Damien def. Valencia/Placentia 8-4; Los Altos def. Pasadena Poly 9-8; Brea Olinda def. La Quinta/Westminster 10-2; Bonita def. Rowland 11-4.

Semifinals: Damien def. Los Altos 10-2; Bonita def. Brea Olinda 10-7.

Final: Bonita def. Damien 9-2.



CIF SOUTHERN SECTION - TOYOTA 2001 GIRLS TEAM TENNIS PLAYOFF RESULTS

DIVISION I

First Round: Peninsula def. Lakewood 18-0; Oxnard def. Arroyo Grande 9-9 (70-67); Etiwanda def. Diamond Bar 10-8; Murrieta Valley def. Eisenhower 18-0; Redlands East Valley def. Highland 18-0; Alhambra def. Valencia/Valencia 13-5; Esperanza def. Lynwood 14-4; Capistrano Valley def. Long Beach Wilson 12-6; Upland def. Alta Loma 17-1; Temecula Valley def. Redlands 10-9; Schurr def. Quartz Hill 10-8; Arcadia def. Paramount 16-2; Yucaipa def. Canyon Springs 14-4; Rancho Cucamonga def. Glendale 9-9 (75-69); Long Beach Poly def. Aliso Niguel 9-9 (73-69); Dana Hills def. Santa Ana 18-0.

Second Round: Peninsula def. Oxnard 14-4; Etiwanda def. Murrieta Valley 9-9 (85-77); Redlands East Valley def. Alhambra 13-5; Capistrano Valley def. Esperanza 12-6; Upland def. Temecula Valley 15-3; Arcadia def. Schurr 15-3; Rancho Cucamonga def. Yucaipa 9-9 (73-69); Dana Hills def. Long Beach Poly 11-7.

Quarterfinals: Peninsula def. Etiwanda 17-1; Capistrano Valley def. Redlands East Valley 11-7; Upland def. Arcadia 14-4; Dana Hills def. Rancho Cucamonga 17-1.

Semifinals: Peninsula def. Capistrano Valley 15-3; Dana Hills def. Upland 14-4.

Final: Peninsula def. Dana Hills 10-8.

DIVISION II

Wild Card Round: Rowland def. Kaiser 13-5; La Sierra def. Cajon 10-8; Apple Valley def. Silverado 14-4; Hart def. Santa Fe 9-9 (77-65).

First Round: Troy def. Rowland 18-0; Corona def. San Geronio 10-8; San Clemente def. J.W. North 9-9 (84-67); Mira Costa def. California 18-0; Los Alamitos def. La Sierra 18-0; Villa Park def. Apple Valley 15-3; Burbank def. Lancaster 9-9 (83-76); Righetti def. Adolfo Camarillo 15-3; University def. Cerritos 16-2; Claremont def. Riverside Poly 16-2; Crescenta Valley def. Simi Valley 14-4; Santa Barbara def. Rio Mesa 17-1; Sunny Hills def. Norco 18-0; Edison def. Foothill 9-9 (79-62); Walnut def. Rancho Verde 14-4; Newport Harbor def. Hart 17-1.

Second Round: Troy def. Corona 17-1; Mira Costa def. San Clemente 15-3; Los Alamitos def. Villa Park 9-9 (80-76); Righetti def. Burbank 12-6; University def. Claremont 13-5; Santa Barbara def. Crescenta Valley 10-8; Sunny Hills def. Edison 9-9 (70-68); Newport Harbor def. Walnut

16-2.

Quarterfinals: Troy def. Mira Costa 16-2; Los Alamitos def. Righetti 10-8; University def. Santa Barbara 11-7; Newport Harbor def. Sunny Hills 12-6.

Semifinals: Troy def. Los Alamitos 12-6; Newport Harbor def. University 12-6.

Final: Troy def. Newport Harbor 11-7.

DIVISION III

Wild Card Round: Torrance def. El Monte 12-6; Savanna def. Cypress 10-8; West Torrance def. Gahr 14-4; Chaparral def. West Valley 14-4; El Modena def. Sonora 10-8.

First Round: Beverly Hills def. Torrance 17-1; katella def. Ramona 12-6; Garden Grove def. Hemet 14-4; Santa Margarita def. Savanna 14-4; Westlake def. Paso Robles 17-1; Arroyo def. Charter Oak 10-8; La Serna def. Sierra Vista 15-3; San Marcos def. West Torrance 12-6; Mater Dei def. Tustin 17-1; M.L. King def. Garey 18-0; Wilson/Hacienda Heights def. Serrano 14-4; Dos Pueblos def. South Torrance 12-6; El Dorado def. Chaparral 11-7; Mark Keppel def. La Quinta/La Quinta 18-0; La Mirada def. Brea Olinda 9-9 (77-75); Woodbridge def. El Modena 18-0.

Second Round: Beverly Hills def. Katella 16-2; Santa Margarita def. Garden Grove 15-3; Westlake def. Arroyo 18-0; San Marcos def. La Serna 10-8; Mater Dei def. M.L. King 14-4; Dos Pueblos def. Wilson/Hacienda Heights 15-3; El Dorado def. Mark Keppel 12-6; Woodbridge def. La Mirada 17-1.

Quarterfinals: Beverly Hills def. Santa Margarita 17-1; Westlake def. San Marcos 12-6; Mater Dei def. Dos Pueblos 12-6; Woodbridge def. El Dorado 17-1.

Semifinals: Beverly Hills def. Westlake 17-1; Woodbridge def. Mater Dei 12-6.

Final: Beverly Hills def. Woodbridge 10-8.

DIVISION IV

First Round: Corona del Mar def. Bishop Montgomery 18-0; Bolsa Grande def. Rosemead 15-3; Western def. Pacifica/Garden Grove 15-3; Rosary def. La Canada 9-9 (75-71); St. Lucy's def. Hesperia 18-0; Rim of the World def. Burroughs/Ridgecrest 17-1; South Hills def. Azusa 17-1; Harvard-Westlake def. South Pasadena 15-3; Calabasas def. Newbury Park 16-2; Gladstone def. Covina 11-7; Atascadero def. Santa Paula 18-0; Chaminade def. San Luis

Obispo 13-5; San Marino def. Notre Dame/Sherman Oaks 12-6; Granite Hills def. Palm Springs 12-6; Ocean View def. Mayfair 14-4; Palm Desert def. San Jacinto 18-0.

Second Round: Corona del Mar def. Bolsa Grande 17-1; Rosary def. Western 10-8; St. Lucy's def. Rim of the World 16-2; Harvard-Westlake def. South Hills 18-0; Calabasas def. Gladstone 18-0; Chaminade def. Atascadero 14-4; San Marino def. Granite Hills 15-3; Palm Desert def. Ocean View 17-1.

Quarterfinals: Corona del Mar def. Rosary 18-0; Harvard-Westlake def. St. Lucy's 14-4; Calabasas def. Chaminade 14-4; Palm Desert def. San Marino 17-1.

Semifinals: Corona del Mar def. Harvard-Westlake 16-2; Palm Desert def. Calabasas 10-8.

Final: Corona del Mar def. Palm Desert 13-5.

DIVISION V

First Round: Laguna Beach def. Fairmont 18-0; Villanova Prep def. Marymount 13-5; Pasadena Poly def. Orange Lutheran 9-9 (80-71); La Reina def. La Salle 17-1; Mayfield def. Malibu 16-2; Beaumont def. Desert 15-3; Notre Dame/Riverside def. Kern Valley 12-6; Campbell Hall def. Oak Park 15-3; Chadwick def. Oaks Christian 18-0; Calvary Chapel/Santa Ana def. Capistrano Valley Christian 13-5; Big Bear def. Bishop Union 16-2; Brentwood def. Duarte 18-0; Cate def. Santa Ynez 16-2; St. Bonaventure def. Buckley 18-0; Vivian Webb def. St. Margaret's 10-8; Marlborough def. Oxford Academy 18-0.

Second Round: Laguna Beach def. Villanova Prep 18-0; La Reina def. Pasadena Poly 10-8; Mayfield def. Beaumont 15-3; Campbell Hall def. Notre Dame/Riverside 16-2; Chadwick def. Calvary Chapel/Santa Ana 17-1; Brentwood def. Big Bear 18-0; Cate def. St. Bonaventure 10-8; Marlborough def. Vivian Webb 15-3.

Quarterfinals: Laguna Beach def. La Reina 15-3; Campbell Hall def. Mayfield 10-8; Chadwick def. Brentwood 12-6; Marlborough def. Cate 11-7.

Semifinals: Laguna Beach def. Campbell Hall 10-8; Chadwick def. Marlborough 11-7.

Final: Laguna Beach def. Chadwick 12-6.

MINUTES OF THE EXECUTIVE COMMITTEE MEETING September 19, 2001

The September meeting of the CIF Southern Section Executive Committee was called to order at 1:06 p.m. by President Clark Stephens at the C.I.F. Office. All members were present, with the exception of Donn Clickard.

1. ADOPT AGENDA – It was moved, seconded and passed to adopt the revised agenda.

2. MINUTES – It was moved, seconded and passed to approve the minutes of the CIF-SS Executive Committee meeting of August 18, 2001.

3. ACTION ITEMS –

A. SERRA LEAGUE PROPOSAL – After discussion, it was moved, seconded and passed to amend the Serra League proposal to allow the Commissioner and staff to grant other leagues the same accommodation.

After discussion, it was moved, seconded and passed to allow the Serra League to participate in a fourth tournament for JV/Soph/frosh basketball teams. The teams would be charged the number of games guaranteed in the tournament.

B. SHRINE FOOTBALL GAME – After discussion, it was moved and seconded to approve the Shrine organization's request to conduct a pre-season Kick-Off Classic. The motion was defeated.

C. REQUEST FOR MEMBERSHIP – After discussion, it was moved, seconded and passed to approve for membership Nipomo High School, Los Angeles Adventist Academy, Lutheran High School of Torrance, Summit View West, and The Tutoring School, provided they complete an orientation at the C.I.F. Office.

After discussion, it was moved, seconded and passed to approve for membership Lycee International de Los Angeles, provided they pay the balance of their past dues owed to the organization, pay their dues for the 2001-02 school year, and complete an orientation at the C.I.F. Office.

D. NORTHERN AREA RELEAGUING – It was moved, seconded and passed to approve the

Northern Area Releaguings Proposal.

E. SS053 – After discussion, it was moved, seconded and passed to recommend support of Option 1 of the proposal to fill vacancies on the State Executive Committee, allowing vacancies to be filled by appointment immediately.

4. NON ACTION ITEMS –

A. Assistant Commissioner Karen Hellyer reported on the meeting held at the C.I.F. Office with the newly selected At-Large members to the C.I.F.-SS Council and the suggestion for a Blue Book change which would allow a larger pool of candidates to be considered for At-Large membership to the C.I.F.-SS Council in the future.

B. Assistant Commissioner Rob Wigod gave an update on the implementation of the Official's Fees package.

C. Assistant Commissioner Paul Castillo reported on the supervision of athletes at championship events and distributed copies of those guidelines.

D. Commissioner Jim Staunton reported on the desire to expand the role of sport advisory committees and an update on the complaint filed against the C.I.F. by U.S. Water Polo.

CLOSED SESSION –

At 3:24 p.m. the Executive Committee went into closed session to discuss real estate options for the future location of the C.I.F. Southern Section Office. At 3:34 p.m. the closed session was concluded with no action taken.

5. REPORT SESSION –

A. Commissioners Report – Commissioner Jim Staunton reported on the New Principal/A.D. Orientation Workshop held on September 18th.

B. Treasurer's Report – Susana Arce reported on the audit being completed with a net surplus income of \$168,434.82 for the 2000-01 school year and that school membership dues will remain the same for the 2001-02 school year.

C. Committee Member Reports –

1. Citrus Belt Area – Dr. Tom Davis reported

on out of state competition being curtailed by Inland Empire schools, gender equity improvements, increased cost of officials, and the Leadership Conference being sponsored by the Riverside Department of Education.

2. School Board Representative – Jeannine Martineau reported on the progress of the re-authorization bill for the C.I.F. and the snack food bill.

3. Superintendent Representative – Dr. James Harris reported on upcoming meetings with the Superintendent's Committee and the Los Angeles County Superintendents.

4. Orange County Area – Dr. John Dahlem reported that the two new At-Large members to the C.I.F. Council from Orange County will be invited to the Orange County League Representatives meetings this year and that there is a shortage of football Officials in Orange County requiring some freshman football games to be moved.

5. CAPSO Representative – Dr. Gary Smidderks reported on the progress of the Small Schools Area exploring the concept of a conference format, in which schools will be leagued by sport.

6. Past President/ Mt. Sac. Representative – Dr. Ken Gunn reported on the Baseline League meeting held on September 17th.

There being no further business to come before the Executive Committee, the meeting was adjourned at 4:09 p.m.

Submitted by:

ROB WIGOD
ASSISTANT COMMISSIONER

Approved by:

DR. JAMES STAUNTON
COMMISSIONER OF ATHLETICS

CIF SOUTHERN SECTION - TOYOTA 2001 GIRLS INDIVIDUAL TENNIS PLAYOFF RESULTS

SINGLES

First Round: Lindsey Nelson (Villa Park) def. Kate Jolson (Beverly Hills) 6-3, 6-3; Cristina Visico (Long Beach Wilson) def. Joanna Kao (Sunny Hills) 4-6, 6-3, 6-3; Anne Yelsey (Corona del Mar) def. Casey Cross (Palm Desert) 6-2, 6-0; Natalie Braverman (Newport Harbor) def. Nazlie Ghazal (Chaparral) 6-2, 6-2; Tracy Lin (Canyon/Anaheim) def. Jessica Leck (Harvard-Westlake) 7-5, 2-6, 6-0; Robyn Baker (Palm Desert) def. Kady Pooler (Dana Hills) 6-2, 7-6 (12-10); Elizabeth Exon (Woodbridge) def. Monica Wiesener (Calabasas) default; Lori Stern (Cate) def. Ivana King (Long Beach Poly) 6-1, 6-1.

Quarterfinals: Lindsey Nelson def. Cristina

Visico 6-4, 6-3; Natalie Braverman def. Anne Yelsey 6-3, 6-3; Tracy Lin def. Robyn Baker 6-4, 6-1; Elizabeth Exon def. Lori Stern.

Semifinals: Lindsey Nelson def. Natalie Braverman 6-4, 3-6, 6-4; Tracy Lin def. Elizabeth Exon 6-3, 6-1.

Final: Tracy Lin def. Lindsey Nelson 6-3, 6-4.

DOUBLES

First Round: Harkins/Joshi (Peninsula) def. Litvinoff/Sundquist (Redlands East Valley) 6-1, 6-0; Joy/Mettert (Palm Desert) def. Boyd/Velasco (Mater Dei) 6-1, 6-1; Selmanson/Nafarrete (Los Alamitos) def. Reames/Beck (Dana Hills) 6-1, 6-4; Snyder/Holland (Corona del Mar) def. Dinh/Eitan (Troy) 6-1, 6-1; Durkin/Everyly (Calabasas)

def. Bala/Gede (Redlands) 6-1, 6-1; Butterwick/Barron-Sandman (Laguna Beach) def. Forgie/Lopez (Dos Pueblos) 6-4, 4-6, 6-2; Wilson/Bronowicki (Dana Hills) def. Fermin/Ciobanu (Troy) 6-4, 6-2; Comstock/Labrucherie (Peninsula) def. Matthews/Meister (La Reina) 6-3, 6-3.

Quarterfinals: Joy/Mettert def. Harkins/Joshi 2-6, 6-3, 7-6 (7-3); Snyder/Holland def. Selmanson/Nafarrete 6-3, 6-3; Durkin/Everyly def. Butterwick/Barron-Sandman 6-1, 6-1; Comstock/Labrucherie def. Wilson/Bronowicki 6-2, 6-3.

Semifinals: Snyder/Holland def. Joy/Mettert 6-4, 6-1; Durkin/Everyly def. Comstock/Labrucherie 2-6, 7-6 (3), 7-6 (2).

Final: Durkin/Everyly def. Snyder/Holland 6-7 (2), 6-3, 6-3.

MINUTES

(Continued from previous page)

tors Conference coming up in Reno, Nevada.

5. Small Schools – Barrett Luketic commended the Commissioner and staff on the hardship appeals hearings he has participated in.

6. President-Elect – Paul Breit reported on the State C.I.F. Economic Viability Committee meeting he attended in October and the discussion on title sponsorship for the Southern Section.

7. Past President – Dr. Ken Gunn thanked the C.I.F. staff for their hard work on all the fall sports playoff brackets and the fall playoffs as a whole.

There being no further business to come before the Executive Committee, the meeting was adjourned at 4:14 p.m.

Submitted by:

ROB WIGOD
ASSISTANT COMMISSIONER

Approved by:

DR. JAMES STAUNTON
COMMISSIONER OF ATHLETICS



CIF SOUTHERN SECTION STRATEGIC PLANNING

Our Federated Council met recently to renew the process of Strategic Planning. Begun in 1993, it took an entire year to complete. Our organization has decided that is time to re-visit the process to determine our direction and progress towards our goals. Times have changed and CIF needs to be responsive.

We started our work with a basic question: what has changed about CIF in the last eight years? The answers were revealing.

There was strong agreement that prior to 1993, CIF was primarily a regulatory organization; we concerned ourselves with eligibility of student athletes and not much more. To be sure, championships were important, but a commissioner spent most of his time dealing with questions about whether athletes were eligible or not, and sanctioning schools in violation of rules.

Since then, our focus has changed to cover a number of areas; see if you agree with our assessment.

Service – There is a new sense that CIF has devoted itself to serving our schools; we now ace as a resource on the Blue Book as well as a source of information for new administrators. We make interpretations and help schools avoid penalties and sanctions. Every year some schools must suffer

penalties or forfeit games as a result of problems; but when that happens the office views that as a failure on our part, not a triumph. One representative mentioned that he believed our schools have greater trust and respect for CIF as an organization, a statement that pleased all the commissioners and office staff.

Teaching – Every section now spends a substantial portion of its resources hosting educational events to keep administrators aware of changes in its rules as well as new information on student health and safety. Every year we distribute to schools the latest information on treatment of heat related injuries, weight management, alcohol and drug awareness as well as performance enhancing substances. We know that administrative turn over has changed the face of our schools. We know that it is difficult to be accurate about our rules since the advent of Open Enrollment and Charter Schools. Added to this package is a commitment to teach character development and sportsmanship, a new focus that is sorely needed. We have partnered with the Josephson Institute to promote Victory with Honor and Character Counts. Our Web Site contains frequently asked questions that assist parents who want information about eligibility. Of course, we field questions from all of the communities we serve. Coaching education ef-

forts have resulted in thousands of coaches being trained by professional staff in how to coach adolescents.

Advocacy – This is a relatively new area of effort, but it has become imperative that CIF participate in the political process to promote coaching education, support for schools, safety, renewal legislation and political awareness of just what we do. We have forged much stronger ties with ACSA. Every year, the California School Boards Association attends a seminar on CIF and its rules.

Integration – We believe that our goal is to support our schools in their academic mission. The Strategic Planning process has helped us to renew our commitment to schools and keep our focus. We have resisted the efforts of outside sports organizations to promote our championships as "showcases" for college and pro scouts. We have written rules that re-enforce our belief that athletic participation helps students perform better in school.

The legislature as well as our courts has had an effect on our rules and what we can reasonably do to restrict the movement of athletes for athletic purposes. Nevertheless we have accomplished a great deal in seven years. We look forward to what we will accomplish in our next plan.

CIF SOUTHERN SECTION OFFICIAL BALLS FOR 2001-2002

Official Ball per sport:

- Baseball: **Rawlings R-100 with NFHS.**
- Boys Basketball: **Spalding TF1000 Wide Channel NFHS.**
- Girls Basketball: **Spalding TF1000 28.5 Wide Channel NFHS.**
- Football: **Two options for game balls are available – Spalding TF-100 NFHS "compares" to Wilson T-1000 shape. Spalding J5V NFHS "compares" to Rawlings R5 shape.**
- Golf: **Strata offers CIF-SS logo ball at a better than retail rate.**
- Soccer: **Spalding TF2000 NFHS for both boys and girls use.**
- Softball: **Dudley CFP12Y NFHS. Ask for NFHS; they have several logo versions.**
- Tennis: **Wilson**
- Volleyball: **Spalding TF4000 NFHS for both boys and girls use.**
- Boys Water Polo: **Baden WPX500 w/ NFHS. ****
- Girls Water Polo: **Baden WPX400 w/ NFHS. ****

** This is already the *mandatory playoff ball* in all rounds.

Note: NFHS stamped is required in all sports except golf and tennis, including football.

Mandatory Playoff Use Requirement:

Already in place for water polo, the mandatory "official" ball rule for all playoff rounds beginning with the Fall 2002 playoffs, excluding golf. We have had many calls to clarify the interpretation of this requirement. So to clarify are reiterate, this rule is **EVERY MINUTE/EVERY PLAY OF ALL ROUNDS** in CIF-SS playoffs.

Playoff Ball Use Rule Enforcement:

We anticipate that all schools will display to their student-athletes a "positive ethical message" and compete with the official ball per sport. To not do so would be a terrible message to our students and our business partners. Currently in draft form, a rule will be proposed resulting in sanction against a coach not providing and playing with the correct playoff ball.

DIVISION XIII

Offensive Player of the Year – Alex Ballard, Arrowhead Christian Academy
 Defensive Player of the Year – Casey Overholt, Arrowhead Christian Academy
 Coach of the Year – Dan Finrock, Arrowhead Christian Academy

OFFENSIVE TEAM

Pos.	Name	School	Yr.
Back	Alex Ballard	Arrowhead Chr Academy	12
Back	Glen Ohaeri	Aquinas	12
Back	JD Washington	Campbell Hall	12
Back	Aaron Ware	Oaks Christian	09
Back	RJ Flamson	Mammoth	11
Back	Omar Dittu	Flintridge Prep	12
QB	Matt Kaplan	Campbell Hall	12
TE	Chris Carter	Arrowhead Chr Academy	12
Receiver	Justin Green	Campbell Hall	11
Receiver	Aaron Winklemen	Western Christian	11
Receiver	Keiser Hamdorf	Mammoth	11
Lineman	Shea Kenney	Mammoth	12
Lineman	Buddy Hearvin	Arrowhead Chr Academy	12
Lineman	Brett Nungesser	Pasadena Poly	12
Lineman	Scott Kenyon	Brentwood	12
Lineman	Matt Cole	Hamilton	12
Lineman	Micah Hernandez	Western Christian	12
Lineman	Michael Miller	Mammoth	12
Kicker	James Dingman	Brethren Christian	11

DEFENSIVE TEAM

Pos.	Name	School	Yr.
Back	Michael Payne	Mammoth	12
Back	Kevin McDonald	Arrowhead Chr Academy	12
Back	Garrett Day	Capistrano Valley Chr	12
Back	Carlos Martinez	Ontario Christian	12
Back	John Giangregorio	Oaks Christian	10
Back	Camron Marvin	Western Christian	12
Linebacker	Casey Overholt	Arrowhead Chr Academy	12
Linebacker	Eric Schlegel	Capistrano Valley Chr	11
Linebacker	Adam Richter	Oaks Christian	11
Linebacker	Michael Parks	Trona	12
Linebacker	Sergio Hernandez	Brentwood	12
Linebacker	Garrett Stoltzfus	Mammoth	11
Line	Eric Mann	Mammoth	12
Line	Kyle Mc Clure	Oaks Christian	11
Line	Adam Klappholz	Brentwood	12
Line	David Lopez	Arrowhead Chr Academy	11
Line	Alex Blum	Brethren Christian	10
Line	Jeremy Guida	Arrowhead Chr Academy	12
Line	Jason Hartless	Mammoth	12

FIRST TEAM

OFFENSE

Pos.	Name	School	Division	Yr.
Back	Hershel Dennis	Long Beach Poly	1	12
Back	Robbie DuBois	Mission Viejo	2	12
Back	Charles Burnley	Valencia/V	3	11
Back	Keith Harris	Charter Oak	7	12
Back	Lorenzo Booker	St Bonaventure	11	12
QB	Matt Moore	Hart	3	12
TE	Marcedes Lewis	Long Beach Poly	1	12
TE	Ben Bandell	Murrieta Valley	5	12
Receiver	Dennis Flanagan	Edison	1	12
Receiver	Chris Mc Foy	Chino	2	12
Receiver	Chris Steck	Hart	3	12
Receiver	Dante Bogan	Santa Barbara	4	12
Receiver	Whitney Lewis	St Bonaventure	11	11
Lineman	Winston Justice	Long Beach Poly	1	12
Lineman	Ryan Keating	Edison	1	12
Lineman	Ryan Parks	Chino	2	12
Lineman	Robert Chai	Newport Harbor	6	12
Lineman	James Bonelli	St Bonaventure	11	12
Kicker	Adrian Rosales	South Hills	9	12
Athlete	Rhema Mc Knight	Kennedy	6	12

SECOND TEAM

OFFENSE

Pos.	Name	School	Division	Yr.
Back	Jimmy Manley	Mayfair	6	12
Back	Frederick Collins	La Quinta/LQ	8	12
Back	Manuel Gutierrez	Brea Olinda	9	12
Back	Curtis Brown	Paraclete	12	12
Back	Glen Ohaeri	Aquinas	13	12
QB	Ben Olson	Thousand Oaks	4	12
Receiver	Kevin Van Gorder	Los Alamitos	1	12
Receiver	David Anderson	Thousand Oaks	4	12
Receiver	Dash Crutchley	Chaparral	5	12
Receiver	Jeremy Arbisio	Troy	9	12
Receiver	Michael Bolio	North Torrance	10	12
Lineman	David Dunphy	Mission Viejo	2	12
Lineman	Eli Munoz	Saugus	3	12
Lineman	Nick Mihalhauser	Arroyo Grande	4	12
Lineman	Kili Lefotu	Arlington	5	12
Lineman	Scott Smith	Brea Olinda	9	12
Kicker	Nick Folk	Notre Dame/SO	3	12
Athlete	Idris Moss	Eisenhower	1	12

ALL CIF-SOUTHERN SECTION 2001 FOOTBALL TEAM

FIRST TEAM

DEFENSE

Pos.	Name	School	Division	Yr.
Linebacker	Pugo Togafao	Long Beach Poly	1	12
Linebacker	Chad Slapnicka	Loyola	1	12
Linebacker	Ryan Powdrell	Mission Viejo	2	12
Linebacker	Michael Okwo	Mira Costa	3	11
Linebacker	Scott Garrison	San Luis Obispo	4	12
Line	Manuel Wright	Long Beach Poly	1	12
Line	Sedric Ellis	Chino	2	11
Line	Chris Frome	Hart	3	12
Line	Tim Volk	Notre Dame/SO	3	12
Line	CJ Niusulu	Barstow	8	12
Back	Darrel Bing	Long Beach Poly	1	12
Back	AJ Martinez	Edison	1	12
Back	Steve Quinlan	San Geronio	5	12
Back	Kenneth Franks	Cerritos	6	11
Back	Eric Mc Neal	Serra	7	12
Punter	Tom Malone	Temescal Canyon	5	12

SECOND TEAM

DEFENSE

Pos.	Name	School	Division	Yr.
Linebacker	Shay Murphy	Los Alamitos	1	12
Linebacker	Israel Zepeda	Centennial/Cor	5	12
Linebacker	Cory Ray	Newport Harbor	6	12
Linebacker	Tyrell Tyler	South Hills	9	12
Linebacker	Eric Schlegel	Capistrano Vly Chr	13	11
Line	Ricky Parker	Los Alamitos	1	12
Line	LaJuan Ramsey	Dominguez	2	12
Line	Randy Kirschman	Paloma Valley	5	12
Line	Corey Cranford	Charter Oak	7	12
Line	Alex Ligon	North Torrance	10	12
Back	Joe Garcia	Los Alamitos	1	12
Back	Kevin Rex	Thousand Oaks	4	12
Back	Akeem Ray	Desert Hot Springs	8	12
Back	Jaron Fairman	South Hills	9	12
Back	Darius Connor	Inglewood	10	12
Punter	Chris Davis	Rio Mesa	4	12



DIVISION IX

Offensive Player of the Year – Manuel Gutierrez, Brea Olinda
 Defensive Player of the Year – Steve Stagnaro, Brea Olinda
 Coach of the Year – Jon Looney, Brea Olinda

Pos.	Name	School	Yr.
Back	Manuel Gutierrez	Brea Olinda	12
Back	Evan Lopez	Buena Park	12
Back	Ruben Hernandez	Garden Grove	12
Back	David Mayfield	Sonora	12
Back	Scott Pickett	University	12
Back	Anthony Matagi	Los Amigos	12
Lineman	Scott Smith	Brea Olinda	12
Lineman	Ramsey Flapai	Western	12
Lineman	John Antolin	Valencia/P	12
Lineman	Jeff Steemer	Northview	12
Lineman	Salvador Aguilar	Buena Park	12
Lineman	Eddy Ramos	Garden Grove	12
Lineman	Brian Fairbanks	Northwood	11
TE	Paul Ruggio	La Habra	12
QB	Ryan Repp	South Hills	12
QB	Danny Tomchak	Northwood	12
Receiver	Jeremy Arbisio	Troy	12
Receiver	Dave Anderson	Northwood	12
Receiver	Brandon Nicholson	Brea Olinda	12
Receiver	Matt Hardin	Los Amigos	12
Kicker	Adrian Rosales	South Hills	12

Pos.	Name	School	Yr.
Back	Jaron Fairman	South Hills	12
Back	Marcus Nolan	South Hills	12
Back	Tim Heathington	Buena Park	12
Back	Byran Bentrott	Northwood	11
Back	Jason Boyd	Laguna Beach	12
Back	Steve Stagnaro	Brea Olinda	12
Lineman	Mike Delgado	Buena Park	12
Lineman	Ryan Murray	Fullerton	12
Lineman	Tauveli Taumoefolau	Garden Grove	12
Lineman	Matt Changala	Northwood	12
Lineman	Fili Moala	Western	11
Lineman	Aaron Sverapa	Brea Olinda	12
Lineman	Russ Scott	Brea Olinda	12
Lineman	Chinedum Chukwuezi	South Hills	12
Linebacker	Sam Islas	Los Amigos	12
Linebacker	Chris Cassidy	Brea Olinda	12
Linebacker	Brent Williams	Bonita	12
Linebacker	Tyrell Tyler	South Hills	12
Linebacker	Raymond Gonzales	Buena Park	12
Linebacker	Dustin Sober	Fullerton	12
Punter	Jeff Patton	Sonora	11

DIVISION X

Offensive Player of the Year – Kenny Brown, North Torrance
 Defensive Player of the Year – Alex Ligon, North Torrance
 Coach of the Year - Norm Lacey, Santa Monica

Pos.	Name	School	Yr.
Back	Mike Adams	Temple City	12
Back	Derek Davis	Santa Monica	12
Back	Lavelle Lemon	Inglewood	12
Back	Chancey Washington	South Torrance	11
Back	Brandon Thomas	Paso Robles	12
QB	Kenny Brown	North Torrance	12
QB	Matt Molezynski	Temple City	12
Receiver	Desmond Reed	Temple City	11
Receiver	Michael Bolio	North Torrance	12
Receiver	Charles Gordon	Santa Monica	12
Receiver	Jeff Gray	North Torrance	11
TE	Steve Eno	El Segundo	12
Lineman	Robert Gustavis	North Torrance	11
Lineman	Olad Dagundero	Inglewood	12
Lineman	Will Hames	Santa Ynez	12
Lineman	Travis Draper	Paso Robles	11
Lineman	Dan Learned	Paso Robles	12
Lineman	Chris Price	Santa Monica	12
Lineman	Dan Solchanyk	Santa Monica	12
Kicker	Jeff Worthley	Temple City	12

Pos.	Name	School	Yr.
Line	Daniel Zynn	South Pasadena	12
Line	Josh Moulton	Temple City	12
Line	Nick Drazenovic	Temple City	12
Line	Josh Smith	Santa Monica	12
Line	Alex Ligon	North Torrance	12
Line	Lawrence Jackson	Inglewood	11
Line	Matt Albanese	Paso Robles	12
Linebacker	David Guerrero	La Puente	12
Linebacker	Steve Brown	Temple City	12
Linebacker	Steven Juarez	North Torrance	12
Linebacker	Adam Fleener	Paso Robles	12
Linebacker	Chris Nunez	St Joseph	12
Back	Jonathon Saul	San Marino	12
Back	Darius Connor	Inglewood	12
Back	Terrell Maze	Santa Monica	12
Back	Matt Monteiro	Paso Robles	12
Back	Jeremy Barnes	Morro Bay	12
Back	James Cooper	Santa Monica	12
Punter	Patrick Perrigue	La Canada	12

DIVISION XI

Offensive Player of the Year – Lorenzo Booker, St Bonaventure
 Defensive Player of the Year – Brandon Mascarro, St Bonaventure
 Coach of the Year - Jon Mack, St Bonaventure

Pos.	Name	School	Yr.
Back	Lorenzo Booker	St Bonaventure	12
Back	Nick Kaiser	Nordhoff	12
Back	Jabari Jefferson	Cathedral	12
Back	Chase Twedell	Valley Christian/C	11
Back	Deangelo Bijole	Verbum Dei	12
QB	Brendon Anderson	Oak Park	12
QB	David Maldonado	Santa Paula	12
Lineman	James Bonelli	St Bonaventure	12
Lineman	Scott Scholten	Valley Christian/C	12
Lineman	Rene Encarnacion	Cathedral	12
Lineman	Casey Balch	Carpinteria	12
Lineman	Justin Haney	Nordhoff	12
Receiver	Whitney Lewis	St Bonaventure	11
Receiver	Chaz Guinn	Orange Lutheran	12
Receiver	Shalen Barber	Verbum Dei	12
Receiver	John Wadkowski	Santa Paula	12
Receiver	Nick Berard	Calabasas	12
Receiver	Monty McNair	Oak Park	12
Kicker	Mike Barrow	St Bonaventure	12

Pos.	Name	School	Yr.
Back	Brandon Mascarro	St Bonaventure	12
Back	Tony Zegers	Orange Lutheran	12
Back	RT Cowins	Cathedral	12
Back	Ben Agatep	St Monica	12
Back	David Elmerick	Bishop Diego	12
Back	David Heim	Orange Lutheran	12
Back	Matt White	St Bonaventure	12
Line	Larnell Ransom	Verbum Dei	12
Line	Pernell Winbush	St Bonaventure	12
Line	Ian Smart	Orange Lutheran	12
Line	Bramble Eagle-Jack	Nordhoff	12
Line	Louis Leonard	Verbum Dei	12
Linebacker	Ryan Fiore	Nordhoff	12
Linebacker	Dustin Baxley	Oak Park	12
Linebacker	Lee Martin	St Bonaventure	11
Linebacker	John Ausmus	Orange Lutheran	10
Linebacker	Ralph Pineda	Cathedral	12
Linebacker	David Carrillo	Santa Paula	12
Punter	Ryan Cecil	Orange Lutheran	12

DIVISION XII

Offensive Player of the Year – Curtis Brown, Paraclete
 Defensive Player of the Year – Dan Emmons, Twentynine Palms
 Coach of the Year - Jeff Cortez, Paraclete

Pos.	Name	School	Yr.
Back	Curtis Brown	Paraclete	12
Back	Marcus Lampkin	Twentynine Palms	12
Back	Erick Jackson	Paraclete	12
Back	Ronald Downing	Mojave	11
Back	Dennis Legaspi	Mary Star	12
QB	Alan Noramn	San Jacinto	12
Lineman	Jarred Vermillion	Mojave	12
Lineman	Matt Brandt	San Jacinto	12
Lineman	KC Anderson	Big Bear	12
Lineman	Thomas Lara	Banning	11
Lineman	Jesse Pulido	Paraclete	12
Lineman	Chris Johnson	Kilpatrick	12
Lineman	Danny Burkett	Mary Star	12
Receiver	Rudy Burgess	Desert	11
Receiver	Greg Davis	San Jacinto	12
Receiver	Jason Napoleon	Desert	11
Receiver	Lymar Cole	Paraclete	12
Receiver	Dan De Vall	LA Baptist	12
TE	Robert Lewis	Montclair Prep	11
Kicker	Sergio Aguayo	San Jacinto	11

Pos.	Name	School	Yr.
Back	Joe Martin	Paraclete	12
Back	LD Cox	Mojave	12
Back	Jason Spratt	Montclair Prep	12
Back	Anthony Banks	Twentynine Palms	11
Back	Andres Gallegos	Bosco Tech	12
Back	Flamingo Malone	Banning	12
Lineman	Geoff Phelan	Paraclete	12
Lineman	Nick Daneri	Bosco Tech	12
Lineman	Michael Zuanich	Mary Star	11
Lineman	Craig Bertrand	Bishop	12
Lineman	Alan Krieter	Bauemont	12
Lineman	Keith Rhodes	Notre Dame	12
Lineman	Dan Leopoldo	Twentynine Palms	11
Linebacker	Dan Emmons	Twentynine Palms	12
Linebacker	Adam Harris	Mojave	12
Linebacker	Keith Lambert	Paraclete	11
Linebacker	Marcus Franco	Montclair Prep	10
Linebacker	David Mihaljevich	Mary Star	12
Punter	Brandon Murray	Rosamond	12

FORMER CIF-SS PRESIDENT PASSES AWAY

Dr. Hanford Rants, CIF-SS Council President from 1980 until his retirement one year later, passed away January 29, 2002 after a long battle with cancer. He was 78 years old.

Dr. Rants was born on May 16, 1923 in Ahtanum, Washington. Prior to earning bachelors and masters degrees in physical education from Washington State University and a Doctorate in Education from the University of Southern California, Dr. Rants served as a sergeant with the Army in the South Pacific during World War II, surviving four beach landings and earning Silver and Bronze Stars as well as a Purple Heart.

He began his teaching career in 1949 as a math and science instructor along with an assignment in coaching. He served as a public school administrator for nearly 30 years beginning at the junior high school level before moving on to Warren High School (seven years) as its principal. Dr. Rants then served nearly 12 years at Gahr High School before retiring from the public education profession in 1981. Upon his resignation from Gahr, Rants served as Principal at Brethren Christian High School

until that campus moved from Paramount to Cypress.

Dr. Rants served as Chairman of the Western Association of Schools and Colleges (WASC) and was a member of that committee from 1973 until his retirement; he was also a State Executive Board Member and District President of the California Association of Secondary School Administrators (CASSA); President, Region 14 of the Association of California School Administrators (ACSA); Member of the High School Committee of the National Association of Secondary School Principals (NASSP); league president, member and treasurer of the CIF-SS Executive Committee; and President of the CIF-SS Council from 1980 until September of 1981.

Rants was so beloved by his students at Gahr High School that, upon his retirement in 1981, nearly 2,200 students launched a drive against the ABC Unified School District to have the newly built stadium on the Gahr campus named after him.

Dr. Rants is survived by his wife of 57 years, Shirley; three sons (Jon, Jay and Jack); five grandchildren and five great-grandchildren.

JOHN KENTERA RETURNS AS HOST OF 2001 FOOTBALL PRESS CONFERENCE

The CIF Southern Section was again pleased to have one of the great supporters of high school sports in Southern California return after a one year absence as its Master of Ceremonies at the 26th Annual Football Press Conference Luncheon held at The Grand in Long Beach on December 3, 2001.

"The Coach" John Kentera OF XTRA Sports Radio 690, emceed the conference, which is intended to bring together the coaches and several players who participated in the championship contests of the 13 divisions of football, with the representatives of the local media. In addition, the champions of the two 8-man divisions were in attendance.

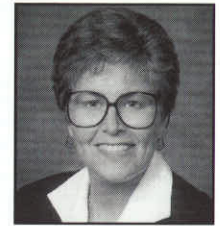
Kentera is the host of the top-rated high school sports show in the nation on XTRA Sports 690, Monday through Friday, 8 p.m. to 11 p.m. A former basketball, football and baseball coach at Torrey Pines High School in San Diego, John is also currently the color commentator for the University of San Diego and San Diego State Basketball

Broadcasts, color analyst for San Diego State Football, Co-Host of Padre Talk, and host of XTRA Sports Tailgate Talk Show and NFL Recap on Sunday's. John also does the color commentary for all of the CIF San Diego Section Football Championship games.

The press conference gives the media an excellent opportunity for advanced interviews, as well meeting the coaches and players of teams they may not usually cover. It is also a great way of promoting sportsmanship between the competing teams, by allowing the players to meet each other in a friendly environment.

Also on hand at the press conference were Clark Stephens, President of the CIF Southern Section Council; Terry Speir; Executive Committee Member; Tom Byrnes, former Commissioner of the CIF-SS; Dr. Jim Staunton, CIF-SS Commissioner; Rob Wigod, Paul Castillo and Karen Hellyer, CIF-SS Assistant Commissioners; along with numerous Southern Section corporate sponsors.

RULE REVIEW



Officials Are People Too

By Karen Hellyer
 CIF-SS Assistant Commissioner

Everyday the various administrators for the individual sports in this office receive ejection or disciplinary reports from officials. When those reports are received they contain information on the reason that a particular coach or player was ejected. Words like verbal abuse, profanity and taunting of the officials are a common sight. After reading these reports it is easy to see that those guilty of these offenses have clearly missed the importance of those individuals that provide their time and talents as officials. With that in mind here is a reprint of an outstanding article by Dr. Thomas Tutko from the Southern California Youth Sports Newsline. Hopefully it will help to make more clear the important role officials in our organization ...

No system can exist without a set of rules and regulations. Regardless of how we may feel about them, believe in them or even think they are fair and equitable, rules and regulations are critical. They represent the foundation. All systems have groups to enforce these regulations to make the system work.

The sports world is a glaring example of this policy, and the group designed to enforce the rules is the officials. Without officials, sports would fail to exist. Officials represent the stability and maturity of the game. The official's responsibility is to ensure that each individual and team gets an opportunity to perform their best within the rules and regulations.

We have reached a strange crossroad in sports where limits are tested in almost every direction. Testing limits can be exciting when we are thinking of performance records, or interesting when we are thinking about attendance records, but when we get to testing rules and regulations as enforced by officials, we have taken a step in a direction that sincerely needs to be questioned.

In the last several years, official bashing

See **RULE REVIEW** page 19.

2001 SOUTHERN SECTION ALL CIF-SS FOOTBALL SELECTIONS

DIVISION I

Defensive Player of the Year – Manuel Wright, Long Beach Poly
Co-Offensive Players of the Year – Marcedes Lewis/Hershel Dennis, Poly/LB
Coach of the Year – Raul Lara, Long Beach Poly

Pos.	Name	School	Yr.
Back	Hershel Dennis	Long Beach Poly	12
Back	Donnie McCleskey	Bishop Amat	12
Back	Quentin Jones	Los Alamitos	12
Back	Idiris Moss	Eisenhower	12
Back	Ashton White	Santa Margarita	11
Back	Ryan Rogers	Redlands	12
QB	Tommy Grady	Edison	11
Lineman	Winston Justice	Long Beach Poly	12
Lineman	Ryan Keating	Edison	12
Lineman	Jeff Manassero	Mater Dei	12
Lineman	Justin Duchaineay	Loyola	12
Lineman	Jason Morales	St Paul	12
Lineman	Matt Jogr	Fontana	12
Lineman	Chris Doyle	Mater Dei	12
TE	Marcedes Lewis	Long Beach Poly	12
Receiver	Dennis Flanagan	Edison	12
Receiver	Kevin Van Gorder	Los Alamitos	12
Receiver	Shanal Mayfield	Eisenhower	12
Kicker	Craig James	St Paul	12

Pos.	Name	School	Yr.
Back	Darrell Bing	Long Beach Poly	12
Back	AJ Martinez	Edison	12
Back	Joe Garcia	Los Alamitos	12
Back	Doug Middleton	Servite	12
Back	Kenny Chicoine	Mater Dei	12
Back	Dremayne McElroy	Rialto	12
Lineman	Manuel Wright	Long Beach Poly	12
Lineman	Junior LeMauu	Long Beach Poly	11
Lineman	Ricky Parker	Los Alamitos	12
Lineman	Mike Leiter	Santa Margarita	12
Lineman	David Shrekenhamer	Redlands	12
Lineman	Paul Bartsch	Edison	12
Linebacker	Pugo Togafao	Long Beach Poly	12
Linebacker	Chad Slapnicka	Loyola	12
Linebacker	Shay Murphy	Los Alamitos	12
Linebacker	John Miller	Edison	12
Linebacker	Brandon Ferrill	AB Miller	12
Linebacker	Wesley Walker	Bishop Amat	12
Linebacker	Domonic Rickard	Mater Dei	11
Punter	Nick Cormales	Los Alamitos	12

DIVISION II

Offensive Player of the Year – Robbie DuBois, Mission Viejo
Defensive Player of the Year – Ryan Powdrell, Mission Viejo
Coach of the Year – Bob Johnson, Mission Viejo

Pos.	Name	School	Yr.
Back	Robbie DuBois	Mission Viejo	12
Back	Josh Sayles	Rancho Cucamonga	11
Back	Gerald Alexander	Rancho Cucamonga	12
Back	Justin Wyatt	Dominguez	12
Back	Zeke Staples	Warren	12
Back	Chaz Brewer	Ayala	12
Back	Jacob Flowe	Chino	11
Receiver	Chris Mc Foy	Chino	12
Receiver	AJ Herrera	Damien	11
Receiver	Chris Miller	San Clemente	12
Receiver	Jason Cooper	Dominguez	12
Lineman	Ryan Parks	Chino	12
Lineman	David Dunphy	Mission Viejo	12
Lineman	Drew Radovich	Mission Viejo	11
Lineman	Kyle Henry	Upland	12
Lineman	David Rivera	Paramount	11
Lineman	Tim Maddox	Claremont	12
Lineman	Keith Williams	Mission Viejo	12
Kicker	Jeff Essig	Rancho Cucamonga	12

Pos.	Name	School	Yr.
Back	Eric Weddle	Alta Loma	11
Back	Marcial Rosales	West Covina	12
Back	Paul Jimenez	Chino	12
Back	Joe Fleskoski	Mission Viejo	12
Back	Tommy Rodriguez	Mission Viejo	12
Back	Tyrone Brackenridge	Upland	12
Linebacker	Ryan Powdrell	Mission Viejo	12
Linebacker	Kameron Hart	Alta Loma	12
Linebacker	Justin Wolfchief	Ayala	12
Linebacker	Brad Hewitt	San Clemente	12
Linebacker	Chris Schoggins	Upland	12
Linebacker	Kenneth Rivera	Dominguez	11
Linebacker	Tommy Zielomski	West Covina	12
Line	Sedric Ellis	Chino	11
Line	Ryan Aker	Chino	12
Line	Garrett Hazelton	Rancho Cucamonga	12
Line	James Beal	Montclair	12
Line	Jimmy Ko	Warren	12
Line	LaJuan Ramsey	Dominguez	12
Line	Chris Cole	Mission Viejo	12
Line	Jacob Atafua	Mission Viejo	12
Line	Tarson Powers	West Covina	12
Punter	Danny Al-Gattas	Walnut	11

DIVISION III

Offensive Player of the Year – Matt Moore, Hart
Co-Defensive Players of the Year – Chris Frome, Hart & Michael Okwo, Mira Costa
Coach of the Year – Mike Herrington, Hart

Pos.	Name	School	Yr.
Back	Matt Moore	Hart	12
Back	Phil Beckman	Notre Dame/SO	12
Back	Johnny Walker	Antelope Valley	11
Back	Hudson Gossard	Crescenta Valley	12
Back	Charles Burnley	Valencia/V	11
Back	Mickey Mercado	Hart	12
Receiver	Chris Steck	Hart	12
Receiver	Kevin Estes	Saugus	11
Receiver	Dan Moody	Crescenta Valley	12
Receiver	Nick Haley	Mira Costa	11
Receiver	Derek Hagans	Palmdale	12
Lineman	Charlie Kaine	Beverly Hills	12
Lineman	Eli Munoz	Saugus	12
Lineman	Chad Michaud	Hart	12
Lineman	Alex Gottlieb	Valencia/V	11
Lineman	Josh Buez	Crescenta Valley	12
Lineman	William Baker	Palmdale	12
Lineman	Josh King	Antelope Valley	11
Kicker	Carlos Nunez	Antelope Valley	12

Pos.	Name	School	Yr.
Back	Keith Howell	Hart	12
Back	Louie Porcopio	Notre Dame/SO	12
Back	Keith Ellison	Redondo	12
Back	David Enos	Mira Costa	12
Back	Matt Holt	Saugus	12
Back	Kenny Patton	St Francis	12
Back	Brian Golper	Arcadia	12
Linebacker	Michael Okwo	Mira Costa	11
Linebacker	Dan LaChasse	Hart	12
Linebacker	John Robinson	Valencia/V	12
Linebacker	Kava Makalo	Leuzinger	12
Linebacker	Jason Turner	St Francis	11
Line	Chris Frome	Hart	12
Line	Brandon Fuselier	Valencia/V	12
Line	Victor Jalapan	Saugus	12
Line	Brian Chase	Crescenta Valley	12
Line	Garland Baker	Antelope Valley	12
Line	Tim Volk	Notre Dame/SO	12
Line	Mark Schmidt	St Francis	12
Punter	Nick Volk	Notre Dame/SO	12

DIVISION IV

Offensive Player of the Year – Ben Olson, Thousand Oaks
Defensive Player of the Year – Scott Garrison, San Luis Obispo
Coach of the Year – Vic Ecklund, San Luis Obispo

Pos.	Name	School	Yr.
Back	Jon Contos	Westlake	12
Back	Matt McCormick	San Luis Obispo	12
Back	Joaquin Real	Ventura	12
Back	Alex Garfio	Buena	11
Back	Aaron Brown	Oxnard	11
QB	Ben Olson	Thousand Oaks	12
Lineman	Steve Hall	Westlake	12
Lineman	Nick Milhhauser	Arroyo Grande	12
Lineman	Kris Vasquez	Ventura	12
Lineman	Brian Watje	Arroyo Grande	12
Lineman	Jon Howard	Arroyo Grande	12
Lineman	Matt Bravo	San Luis Obispo	12
Lineman	Matt Augusta	Royal	12
Receiver	Dante Bogan	Santa Barbara	12
Receiver	Dave Anderson	Thousand Oaks	12
Receiver	Brad Boyer	Adolfo Camarillo	12
Receiver	Jay Staggs	Dos Pueblos	12
Receiver	Asa Hagy	Buena	12
Kicker	Jesse Ainsworth	Thousand Oaks	11

Pos.	Name	School	Yr.
Back	Kevin Rex	Thousand Oaks	12
Back	Miller Aupui	Channel Islands	11
Back	Chad Simonson	Arroyo Grande	12
Back	Jake Rowley	San Luis Obispo	12
Back	Kasey O'Brien	Westlake	12
Back	Nick Solakian	Santa Barbara	12
Line	Mike Dominguez	Rio Mesa	12
Line	Freddie Ramirez	Arroyo Grande	12
Line	Kevin Hames	Westlake	12
Line	Matt York	Dos Pueblos	12
Line	Ryan Hogan	Royal	12
Line	Jesse Olson	San Luis Obispo	12
Line	Josh Carson	Thousand Oaks	12
Linebacker	Scott Garrison	San Luis Obispo	12
Linebacker	Kyle Shotwell	Dos Pueblos	12
Linebacker	Richard Martinez	Ventura	12
Linebacker	Matt Kaikaina	Oxnard	12
Linebacker	Wes Pryor	Moorpark	11
Punter	Chris Davis	Rio Mesa	12

Second Round: Marymount def. Whitney 15-2, 15-5, 15-12; La Reina def. Bishop Conaty-Loretto 15-2, 15-10, 15-7; Orange Lutheran def. Malibu 15-13, 15-1, 15-3; Flintridge Sacred Heart def. Los Angeles Baptist 15-4, 15-1, 15-7; La Salle def. Mayfield 15-8, 15-9, 15-13; Valley Christian/Cerritos def. Village Christian 15-1, 15-5, 15-6; St. Bonaventure def. Milken Community 15-4, 15-3, 15-5; Laguna Beach def. Notre Dame/Riverside 15-2, 15-11, 15-7.

Quarterfinals: Marymount def. La Reina 15-9, 15-6, 16-14; Flintridge Sacred Heart def. Orange Lutheran 15-6, 15-3, 15-4; La Salle def. Valley Christian/Cerritos 15-11, 15-11, 3-15, 15-10; Laguna Beach def. St. Bonaventure 15-3, 15-13, 17-15.

Semifinals: Marymount def. Flintridge Sacred Heart 15-10, 19-17, 15-12; Laguna Beach def. La Salle 15-6, 15-2, 12-15, 15-7.

Final: Marymount def. Laguna Beach 15-8, 15-3, 12-15, 15-5.

DIVISION IVA

First Round: St. Margaret's, BYE; Fairmont def. Calvary Chapel/Murrieta 17-15, 15-12, 4-15, 11-15, 15-8; Oakwood def. Desert Christian/Lancaster 16-14, 15-5, 11-15, 9-15, 15-9; Mary Star def. Capistrano Valley Christian 15-1, 15-1, 15-1; Frazier Mountain def. Bishop Diego 15-5, 15-11, 11-15, 4-15, 15-2; Mammoth def. Oaks Christian 13-15, 15-4, 15-7, 15-13; Sherman Indian, BYE; Chadwick def. Campbell Hall 15-11, 15-7, 15-13; Brentwood, BYE; Western Christian def. Aquinas 15-4, 15-8, 15-5; Cate def. Windward 15-1, 15-10, 15-5; Flintridge Prep def. Desert 15-11, 15-12, 15-1; Pasadena Poly def. Bell-Jeff 15-11, 15-10, 16-14; Brethren Christian def. Connely 15-4, 15-11, 15-13; Ontario Christian def. San Gabriel Academy 15-7, 15-2, 15-8; Viewpoint, BYE.

Second Round: St. Margaret's def. Fairmont 15-6, 15-1, 15-7; Mary Star def. Oakwood 15-6, 15-7, 15-6; Frazier Mountain def. Mammoth 15-5, 15-6, 15-8; Chadwick def. Sherman Indian 15-1, 15-0, 11-15, 15-5; Brentwood def. Western Christian 15-11, 12-15, 15-13, 15-12; Cate def. Flintridge Prep 15-13, 13-15, 15-13, 15-19; Pasadena Poly def. Brethren Christian 15-7, 15-7, 15-11; Viewpoint def. Ontario Christian 15-0, 15-5, 15-7.

Quarterfinals: St. Margaret's def. Mary Star 15-8, 15-12, 15-10; Chadwick def. Frazier Mountain 15-1, 15-6, 15-9; Brentwood def. Cate 15-5, 15-12, 7-15, 8-15, 15-12; Pasadena Poly def. Viewpoint 15-9, 15-9, 15-13.

Semifinals: St. Margaret's def. Chadwick 15-5, 15-13, 15-5; Brentwood def. Pasadena Poly 15-13, 15-7, 15-10.

Final: St. Margaret's def. Brentwood 15-4, 15-12, 15-10.

DIVISION VAA

First Round: Hesperia Christian, BYE; Desert Christian/Bermuda Dunes def. Upland Christian 15-4, 15-4, 15-9; Lutheran/La Verne def. Southwestern Academy 15-3, 15-0, 15-2; Apple Valley Christian def. Lone Pine 2-15, 15-9, 8-15, 15-6, 15-11; Faith Baptist, BYE; Valley Christian/Santa Maria def. Buckley 15-3, 15-6, 16-14; New Roads def. Glendale Adventist 8-15, 15-4, 13-15, 15-6, 15-9; Santa Clarita Christian, BYE; Laguna Blanca, BYE; Maricopa def. Boron 15-10, 15-9, 15-4; Riverside Christian def. Mesa Grande Academy 15-12, 15-9, 5-15, 15-7; Liberty Christian def. Rolling Hills Prep 15-3, 15-4, 13-15, 15-5; Grace Brethren def. Cuyamca Valley 17-15, 15-13, 15-3; CSDR def. Southlands Christian 15-12, 15-2, 15-3; Archer School def. First Lutheran 15-0, 15-3, 15-3; Villanova Prep, BYE.

Second Round: Hesperia Christian def. Desert Christian/Bermuda Dunes 15-3, 15-7, 15-7; Lutheran/La Verne def. Apple Valley Christian 15-10, 3-15, 9-15, 15-11, 15-11; Valley Christian/Santa Maria def. Faith Baptist 9-15, 15-8, 15-10, 13-15, 15-13; New Roads def. Santa Clarita Christian 15-13, 15-5, 3-15, 15-10; Laguna Blanca def. Maricopa 15-6, 15-9, 15-3; Riverside Christian def. Liberty Christian 15-13, 15-4, 15-8; Grace Brethren def. CSDR 15-10, 15-13, 15-4; Villanova Prep def. Archer School 15-9, 15-5, 15-12.

Quarterfinals: Hesperia Christian def. Lutheran/La Verne 15-7, 15-4, 15-9; Valley Christian/Santa Maria def. New Roads 12-15, 15-5, 15-13, 15-11; Laguna Blanca def. Riverside Christian 15-1, 15-11, 15-12; Villanova Prep def. Grace Brethren 15-4, 15-4, 15-12.

Semifinals: Hesperia Christian def. Valley Christian/Santa Maria 19-17, 6-15, 15-6, 15-10; Laguna Blanca def. Villanova Prep 15-10, 9-15, 15-4, 15-2.

Final: Hesperia Christian def. Laguna Blanca 3-15, 15-7, 13-15, 15-11, 18-16.

DIVISION VA

First Round: Baptist Christian def. Saddleback Valley Christian 15-3, 15-13, 15-11; Calvary Chapel/Redlands def. Lee Vining 15-1, 15-13, 11-15, 15-17, 15-11; Skyward Christian def. big Pine 15-12, 15-9, 15-8; Pacific Christian def. Hillcrest Christian/Thousand Oaks 15-13, 15-12, 15-10; Joshua Springs def. Calvary Baptist 15-4, 15-4, 15-2; Baker Valley def. Desert Chapel 9-15, 15-4, 9-15, 15-10, 15-8; Orangewood Academy def. Ventura County Christian 15-12, 10-15, 15-7, 15-7; Lighthouse Christian def. Trinity Lutheran 15-0, 15-8, 15-12.

Quarterfinals: Baptist Christian def. Calvary Chapel/Redlands 15-3, 15-10, 15-2; Pacific Christian def. Skyward Christian 9-15, 15-9, 11-15, 15-11, 15-9; Lighthouse Christian def. Orangewood Academy 15-2, 15-3, 15-7.

Semifinals: Baptist Christian def. Pacific Christian 15-2, 15-7, 15-8; Lighthouse Christian def. Joshua Springs 15-7, 15-8, 15-4.

Final: Baptist Christian def. Lighthouse Christian 12-15, 15-7, 15-1, 15-4.

**CIF SOUTHERN SECTION
TOYOTA
2001 GIRLS VOLLEYBALL
CHAMPIONS**

**DIVISION IAA
Long Beach Wilson**

**DIVISION IA
San Clemente**

**DIVISION IAA
Mira Costa**

**DIVISION IIA
Mater Dei**

**DIVISION IIIA
St. Joseph/Lakewood**

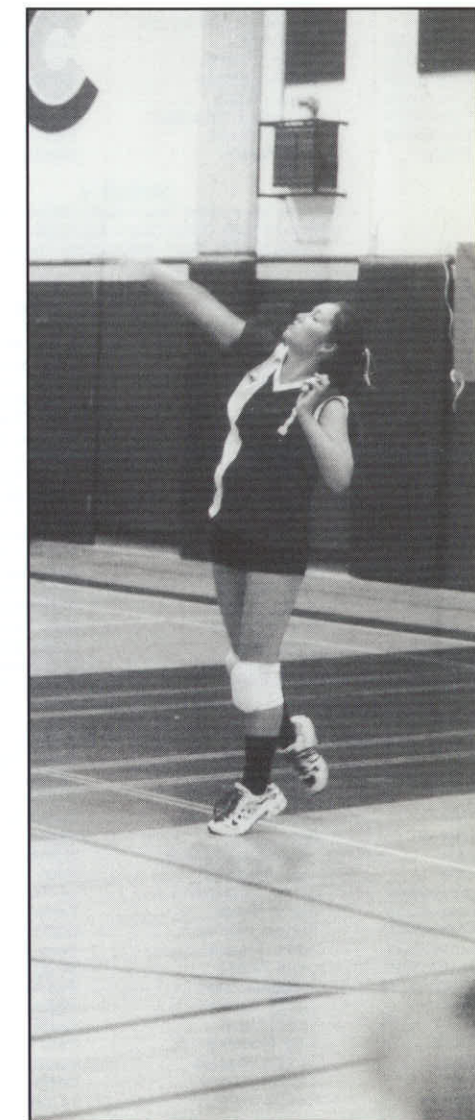
**DIVISION IIIA
Harvard-Westlake**

**DIVISION IVA
Marymount**

**DIVISION IVA
St. Margaret's**

**DIVISION VAA
Hesperia Christian**

**DIVISION VA
Baptist Christian**



CIF SOUTHERN SECTION - TOYOTA 2001 GIRLS VOLLEYBALL PLAYOFF RESULTS

DIVISION IAA

First Round: Long Beach Poly, BYE; Arroyo Grande def. Hoover 15-3, 15-8, 15-4; Redlands def. Rancho Cucamonga 15-3, 15-3, 15-7; Upland def. Temecula Valley 15-4, 15-13, 15-8; Millikan def. Oxnard 14-16, 16-14, 15-11, 16-14; Quartz Hill def. Diamond Bar 15-10, 15-11, 15-5; Murrieta Valley def. Alta Loma 15-11, 15-12, 15-6; Peninsula def. Jordan 15-3, 15-13, 15-7; Esperanza def. Moreno Valley 15-0, 15-6, 15-7; Capistrano Valley def. Santa Ana 15-0, 15-0, 15-10; Etiwanda def. Redlands East Valley 15-6, 15-4, 10-15, 15-2; Downey def. El Rancho 15-2, 15-6, 15-5; Arcadia def. Channel Islands 15-4, 15-0, 15-1; Ayala def. Littlerock 15-6, 15-5, 15-9; Canyon Springs def. Rialto 15-1, 15-8, 15-4; Long Beach Wilson def. Highland 15-4, 15-4, 15-9.

Second Round: Long Beach Poly def. Arroyo Grande 15-4, 15-4, 15-2; Upland def. Redlands 15-5, 4-15, 12-15, 15-6, 15-13; Quartz Hill def. Millikan 4-15, 15-10, 15-12, 15-8; Peninsula def. Murrieta Valley 15-9, 9-15, 15-2, 15-10; Esperanza def. Capistrano Valley 15-0, 15-4, 15-12; Downey def. Etiwanda 15-3, 15-4, 16-18, 10-15, 15-2; Ayala def. Arcadia 16-14, 15-13, 15-11; Long Beach Wilson def. Canyon Springs 15-10, 15-13, 15-10.

Quarterfinals: Long Beach Poly def. Upland 15-13, 14-16, 5-15, 15-13, 15-2; Peninsula def. Quartz Hill 15-9, 15-8, 15-8; Esperanza def. Downey 15-3, 15-9, 15-6; Long Beach Wilson def. Ayala 15-9, 15-3, 15-4.

Semifinals: Long Beach Poly def. Peninsula 13-15, 15-4, 15-6, 15-3; Long Beach Wilson def. Esperanza 15-9, 15-12, 6-15, 15-12.

Final: Long Beach Wilson def. Long Beach Poly 12-15, 10-15, 15-3, 15-7, 15-10.

DIVISION IAB

First Round: San Clemente, BYE; Walnut def. California 15-13, 15-12, 13-15, 15-13; Silverado def. Cajon 15-5, 15-7, 15-10; Santiago/Corona def. Mission Viejo 15-12, 10-15, 15-9, 15-10; Glendora, BYE; San Gabriel def. Crescenta Valley 15-5, 15-7, 15-8; Thousand Oaks def. Adolfo Camarillo 15-12, 15-6, 15-2; Los Alamitos, BYE; Riverside Poly, BYE; Kaiser def. San Bernardino 15-12, 15-12, 15-12; Valencia/Valencia def. Lancaster 15-13, 15-1, 15-2; Royal def. Righetti 15-2, 15-2, 15-9; El Toro def. University 15-11, 15-7, 11-15, 15-6; Warren def. Bell Gardens 15-3, 15-8, 17-15; Corona def. Valley View 15-1, 15-5, 15-9; Yucaipa, BYE.

Second Round: San Clemente def. Walnut 15-3, 15-8, 15-6; Santiago/Corona def. Silverado 15-2, 13-15, 10-15, 15-11, 15-8; Glendora def. San Gabriel 15-3, 15-8, 15-6; Los Alamitos def. Thousand Oaks 17-15, 15-3, 15-11; Riverside Poly def. Kaiser 15-12, 15-5, 15-1; Royal def. Valencia/Valencia 15-5, 9-15, 15-5, 5-15, 15-8; Yucaipa def. Corona 15-7, 15-10, 15-12.

Quarterfinals: San Clemente def. Santiago/Corona 15-8, 15-0, 15-5; Los Alamitos def. Glendora 15-4, 15-3, 15-8; Royal def. Riverside Poly 15-8, 15-10, 15-8; El Toro def. Yucaipa 9-15, 15-6, 15-8, 15-11.

Semifinals: San Clemente def. Los Alamitos 15-8, 15-11, 15-12; El Toro def. Royal 15-6, 15-13, 15-10.

Final: San Clemente def. El Toro 15-1, 15-8, 15-7.

DIVISION IIAA

First Round: Mira Costa, BYE; Canyon/Anaheim def. Centennial/Corona 15-3, 14-16, 16-14, 15-6; Villa Park def. Cathedral City; El Dorado def. Burbank 13-15, 15-1, 15-10, 15-9; Ventura, BYE; Cerritos def. Beverly Hills 15-5, 15-4, 15-6; Sunny Hills def. West Valley 5-15, 15-12, 15-6, 0-15, 15-11; Huntington Beach, BYE; Westlake, BYE; Katella def. Notre Vista 14-16, 15-12, 15-10, 15-7; Foothill def. Woodbridge 15-8, 11-15, 15-12, 15-10; Chaparral def. Kennedy 15-6, 15-9, 15-3; Saugus def. Buena 15-13, 15-13, 15-5; Mark Keppel def. Sultana 15-6, 15-6, 15-17, 15-12; Hemet def. Norco 15-7, 16-14, 15-6; Newport Harbor, BYE.

Second Round: Mira Costa def. Canyon/Anaheim 15-2, 15-5, 15-3; El Dorado def. Villa Park 15-0, 14-16, 15-7, 15-5; Ventura def. Cerritos 15-0, 16-14, 15-4; Huntington Beach def. Sunny Hills 15-6, 15-12, 15-6; Westlake def. Katella 15-4, 15-5, 15-12; Chaparral def. Foothill 15-12, 15-10, 15-12; Saugus def. Mark Keppel 15-11, 15-7, 15-12; Newport Harbor def. Hemet 15-4, 15-4, 15-6.

Quarterfinals: Mira Costa def. El Dorado 15-9, 15-9, 15-6; Ventura def. Huntington Beach 15-2, 15-8, 6-15, 15-11; Westlake def. Chaparral 15-10, 15-12, 17-15; Newport Harbor def. Saugus 15-7, 15-6, 15-4.

Semifinals: Mira Costa def. Ventura 15-10, 15-11, 8-15, 15-6; Newport Harbor def. Westlake 15-3, 15-4, 15-5.

Final: Mira Costa def. Newport Harbor 15-8, 15-3, 15-10.

DIVISION IIB

First Round: Mater Dei, BYE; Garden Grove def. Tustin 9-15, 16-14, 14-16, 15-10, 16-14; Whittier def. El Monte 15-10, 15-8, 12-15, 15-5; Dos Pueblos def. North Torrance 15-6, 15-11, 7-15, 15-3; La Habra, BYE; La Serna, BYE; El Modena def. Valencia/Placentia 8-15, 12-15, 15-13, 15-10, 15-5; Cypress, BYE; South Torrance, BYE; Brea Olinda def. Paloma Valley 15-7, 15-11, 13-15, 15-6; Gahr def. Sonora 15-6, 15-5, 15-4; Santa Margarita def. M.L. King 15-5, 15-5, 15-4; San Marcos def. Paso Robles 15-3, 15-8, 15-7; Charter Oak def. Savanna 17-15, 15-13, 15-12; Torrance def. Norwalk 14-16, 4-15, 15-4, 15-8, 15-11; Irvine, BYE.

Second Round: Mater Dei def. Garden Grove 15-1, 15-5, 15-1; Dos Pueblos def. Whittier 15-4, 15-99, 15-8; La Habra Def. La Serna 15-2, 15-2, 15-10; Cypress def. El Modena 15-12, 3-15, 15-11, 15-13; South Torrance def. Brea Olinda 13-15, 15-13, 15-12, 15-11; Santa Margarita def. Gahr 15-3, 15-6, 15-7; San Marcos def. Charter Oak 15-13, 15-1, 15-5; Irvine def. Torrance 15-2, 15-4, 15-13.

Quarterfinals: Mater Dei def. Dos Pueblos 15-0, 15-0, 15-7; La Habra def. Cypress 15-9, 15-6, 16-14; South Torrance def. Santa Margarita 15-13, 15-8, 15-8; Irvine def. San Marcos 15-10, 15-11, 2-15, 15-12.

Semifinals: Mater Dei def. La Habra 15-3, 15-7, 15-1; Irvine def. South Torrance 15-12, 15-9, 15-8.

Final: Mater Dei def. Irvine 15-9, 15-6, 15-1.

DIVISION IIIB

Wild Card Round: Bolsa Grande def. Ocean View 15-7, 14-16, 15-13, 15-13; Bonita def.

Alemay 15-11, 15-2, 6-15, 15-7; Granite Hills def. Hesperia 15-13, 15-1, 15-13; Diamond Ranch def. Palm Springs 15-11, 15-13, 13-15, 7-15, 15-11; Calabasas def. Los Altos 17-15, 15-12, 13-15, 15-8.

First Round: St. Joseph/Lakewood def. St. Lucy's 15-13, 15-4, 15-10; Rim of the World def. Burroughs/Ridgecrest 15-2, 15-4, 15-11; Mayfair def. Bolsa Grande 15-6, 15-5, 15-6; San Luis Obispo def. Bonita 15-7, 15-5, 15-5; South Hills def. Granite Hills 15-3, 15-13, 15-12; Temple City def. Diamond Ranch 15-3, 15-4, 17-15; Pacifica/Garden Grove def. Bishop Amat 9-15, 15-11, 16-14, 15-12; Atascadero def. Calabasas 15-4, 15-1, 15-7.

Quarterfinals: St. Joseph/Lakewood def. Rim of the World 15-2, 15-8, 15-3; Mayfair def. San Luis Obispo 15-13, 11-15, 15-6, 15-10; Temple City def. South Hills 15-17, 15-6, 12-15, 15-9, 15-13; Pacifica/Garden Grove def. Atascadero 15-10, 5-15, 15-12, 15-10.

Semifinals: St. Joseph/Lakewood def. Mayfair 15-17, 9-15, 15-9, 15-7, 15-9; Pacifica/Garden Grove def. Temple City 5-15, 15-12, 15-11, 15-13.

Final: St. Joseph/Lakewood def. Pacifica/Garden Grove 15-9, 15-4, 15-7.

DIVISION IIIA

Wild Card Round: San Marino def. Bassett 15-8, 15-7, 15-9.

First Round: Harvard-Westlake def. South El Monte 15-4, 15-5, 15-0; La Canada def. Azusa Valley 15-11, 12-15, 15-10, 15-9; Notre Dame Academy def. Cabrillo/Lompoc 15-10, 15-7, 15-8; Corona del Mar def. Desert Hot Springs 15-1, 15-6, 16-14; Gabrielino def. Nordhoff 15-9, 15-9, 15-11; Gladstone def. San Jacinto 15-5, 15-6, 15-7; Bishop Montgomery def. San Marino 15-3, 15-6, 15-0.

Quarterfinals: Harvard-Westlake def. La Canada 15-4, 15-4, 15-8; Notre Dame Academy def. San Dimas 15-7, 15-8, 15-3; Corona del Mar def. Gabrielino 15-5, 15-13, 15-5; Bishop Montgomery def. Gladstone 15-7, 15-5, 15-8.

Semifinals: Harvard-Westlake def. Notre Dame Academy 15-8, 15-2, 15-12; Bishop Montgomery def. Corona del Mar 15-6, 10-15, 15-11, 14-16, 18-16.

Final: Harvard-Westlake def. Bishop Montgomery 15-3, 15-5, 15-3.

DIVISION IVA

First Round: Marymount, BYE; Whitney def. Calvary Chapel/Santa Ana 16-14, 17-15, 13-15, 15-12; Bishop Conaty-Loretto def. St. Monica 15-11, 15-8, 15-7; La Reina def. Paraclete 15-1, 15-3, 15-2; Malibu def. Marlborough 15-13, 5-15, 15-13, 7-15, 15-13; Orange Lutheran def. Loma Linda Academy 15-0, 15-4, 15-8; Los Angeles Baptist def. Alverno 15-8, 15-11, 15-10; Flintridge Sacred Heart, BYE; La Salle, BYE; Mayfield def. San Gabriel Mission 15-7, 15-11, 15-17, 15-2; Village Christian def. Kern Valley 15-4, 15-10, 15-11; Valley Christian/Cerritos def. St. Paul 15-7, 15-6, 15-6; St. Bonaventure def. Providence 15-1, 15-13, 15-7; Milken Community def. Holy Family 15-7, 9-15, 10-15, 15-9, 15-12; Notre Dame/Riverside def. Pomona Catholic 15-6, 15-11, 15-13; Laguna Beach, BYE.

DIVISION V

Offensive Player of the Year – Angell Reyna, Cajon
Defensive Player of the Year – Israel Sepeda, Centennial/Cor
Coach of the Year – Mark Parades, JW North

OFFENSIVE TEAM

Pos.	Name	School	Yr.
Back	Cory Campbell	Centennial/Cor	12
Back	Terrell Jackson	Centennial/Cor	12
Back	Ken Stepter	Rancho Verde	12
Back	Matt Padilla	Arlington	12
Back	William Smith	Valley View	12
Back	Rudy Gonzalez	Murrieta Valley	12
Back	Angell Reyna	Cajon	12
Receiver	Dash Crutchley	Chaparral	12
Receiver	Erick Ross	Cajon	12
Receiver	Damon Morton	JW North	10
Receiver	Terry Richardson	Centennial/Cor	12
TE	Ben Bandel	Murrieta Valley	12
Lineman	Alan Petroff	Elsinore	12
Lineman	Jared Whitehorn	Temescal Canyon	12
Lineman	Tom Morgan	Centennial/Cor	12
Lineman	Kili LeFoth	Arlington	12
Lineman	Kevin Morris	Valley View	12
Lineman	Jeff Edwards	Rancho Verde	12
Lineman	Albert Salazar	Colton	12
Kicker	Matt Locklin	Temecula Valley	12

DEFENSIVE TEAM

Pos.	Name	School	Yr.
Linebacker	Ross Wolter	Elsinore	12
Linebacker	Kentry Kaifahina	Cajon	12
Linebacker	Matt Spires	Arlington	12
Linebacker	Brandon Allen	Rancho Verde	11
Linebacker	Darren Sims	JW North	11
Linebacker	Israel Zepeda	Centennial/Cor	12
Back	Josh Black	Santiago/Cor	12
Back	Danny Foster	Centennial/Cor	12
Back	Tate Hess	Elsinore	12
Back	Marvin Irving	Rancho Verde	12
Back	Rafael Simon	Arlington	12
Back	Grayland Walters	JW North	12
Back	Steve Quinlan	San Geronio	12
Line	Mike Nelson	Elsinore	12
Line	Anthony Reyes	Murrieta Valley	11
Line	Henry Tauteoli	San Bernardino	11
Line	Jimmy Fetuuaho	Cajon	12
Line	Ken Mann	JW North	12
Line	Randy Kirschman	Paloma Valley	12
Line	Jeff Benjamin	Centennial/Cor	12
Punter	Tom Malone	Temescal Canyon	12

DIVISION VI

Co-Offensive Players/Year – Rhema McKnight-Kennedy/Jimmy Manley-Mayfair
Co-Defensive Players/Year – Kenneth Franks-Cerritos/Cory Ray-Newport Harbor
Coach of the Year – Mike Fitch, Mayfair

OFFENSIVE TEAM

Pos.	Name	School	Yr.
Back	Jimmy Manley	Mayfair	12
Back	Michael Liti	Foothill	11
Back	Junior Vaca	La Mirada	12
Back	Daniel Dixon	El Modena	11
Back	Godfrey Young	Irvine	12
Back	San Weicks	Loara	12
Back	Dante Bradford	Mayfair	12
QB	Morgan Craig	Newport Harbor	12
Lineman	Anthony Gallegos	La Mirada	12
Lineman	Kevin Lukes	El Modena	12
Lineman	Adam Coetes	Foothill	12
Lineman	Robert Chai	Newport Harbor	12
Lineman	Jeff Marshall	Newport Harbor	12
Lineman	Preston Clover	Laguna Hills	11
Lineman	Sam Baker	Tustin	11
Receiver	Rhema McKnight	Kennedy	12
Receiver	Akilah Lacey	Westminster	12
Receiver	Brian Gaeta	Newport Harbor	12
Receiver	Dane Endley	Laguna Hills	11
Receiver	Jerard Rabb	El Modena	12
Receiver	Travon Spears	Mayfair	12
Kicker	Hugo Penate	Mayfair	11

DEFENSIVE TEAM

Pos.	Name	School	Yr.
Line	Raymond Lechuga	Kennedy	12
Line	JR Martinez	Loara	12
Line	William Johnson	Tustin	12
Line	Tony Tran	Westminster	12
Line	Mike Davis	Irvine	12
Line	Todd Clemens	El Modena	12
Line	John Parker	Mayfair	12
Linebacker	Cory Ray	Newport Harbor	12
Linebacker	Omar Trujillo	Loara	12
Linebacker	Kevin Delahoussaye	Westminster	11
Linebacker	Jordan Johnson	Laguna Hills	12
Linebacker	Ray Ahadi	Woodbridge	12
Linebacker	Mike Pitre	El Modena	11
Linebacker	Rick Lepe	La Mirada	12
Back	Kenneth Franks	Cerritos	11
Back	Kelani Hamba	Cypress	12
Back	Jered Jenkins	Westminster	12
Back	David Blain	Aliso Niguel	12
Back	Mike Brittingham	Foothill	12
Back	Eric Camarillo	Mayfair	12
Punter	Stephen Bemeking	Aliso Niguel	12

DIVISION VII

Offensive Player of the Year – Keith Harris, Charter Oak
Co-Defensive Players/Year – Corey Cranford, Charter Oak & Sal Ortiz, Los Altos
Coach of the Year – Lou Farrar, Charter Oak

OFFENSIVE TEAM

Pos.	Name	School	Yr.
Back	Keith Harris	Charter Oak	12
Back	Keith Brown	Los Altos	12
Back	Loren Wade	Serra	12
Back	Chris Grempe	Alhambra	12
Back	Mike Gomez	Rosemead	12
Back	Steve Quijda	El Rancho	12
QB	Danny Alanis	Santa Fe	12
Lineman	Jonathan Marty	Charter Oak	12
Lineman	Armando Soto	Los Altos	12
Lineman	Steve Moline	Charter Oak	12
Lineman	Aleks Blagojevich	Serra	11
Lineman	Enrique Vargas	Bell Gardens	12
Lineman	Felipe Hernandez	Montebello	12
Lineman	Alex Buckwalter	Santa Fe	12
Receiver	JC McLaurin	Charter Oak	12
Receiver	Jose Espinoza	Santa Fe	12
Receiver	Roy Rubio	Schurr	12
Receiver	Delanie Walker	Pomona	12
TE	Jimmy Fuentes	Santa Fe	12
Kicker	Art Reyes	Santa Fe	11

DEFENSIVE TEAM

Pos.	Name	School	Yr.
Back	Eric Mc Neal	Serra	12
Back	Lorenzo Dominguez	Los Altos	12
Back	Rafael Falcon	Charter Oak	11
Back	Caleb Flores	Los Altos	11
Back	Dan White	Santa Fe	12
Back	Raymond Ochoa	Bell Gardens	12
Lineman	Corey Cranford	Charter Oak	12
Lineman	Juan Silva	Charter Oak	11
Lineman	Brigham Harwell	Los Altos	10
Lineman	Paul Cody	Los Altos	11
Lineman	Armando Jimenez	Montebello	12
Lineman	Jason Gallardo	Montebello	12
Lineman	Alfredo Moreno	Santa Fe	12
Lineman	Chris Guzman	El Rancho	12
Lineman	Jose Castro	Gabrielino	12
Linebacker	Sal Ortiz	Los Altos	12
Linebacker	Caleb Rangel	Charter Oak	12
Linebacker	Chase Matox	Serra	12
Linebacker	Alonzo Diaz	Los Altos	12
Linebacker	Ronnie Noriega	Montebello	12
Linebacker	Jason Olmos	Rosemead	12
Punter	Aaron Perez	Charter Oak	10

DIVISION VIII

Co-Offensive Players/Year – Frederick Collins & Sammy Chavez, La Quinta/LQ
Defensive Player of the Year – CJ Niulsulu, Barstow
Coach of the Year – Dan Armstrong, La Quinta/LQ

OFFENSIVE TEAM

Pos.	Name	School	Yr.
Back	Frederick Collins	La Quinta/LQ	12
Back	Clark Flournoy	Serrano	12
Back	Curtis Rudd	Victor Valley	11
Back	Farley Walker	Rubidoux	12
Back	Allen Wade	Kaiser	

CIF SOUTHERN SECTION - TOYOTA 2001 FOOTBALL PLAYOFF RESULTS

DIVISION I FIRST ROUND:	DIVISION II FIRST ROUND:	DIVISION III FIRST ROUND:	DIVISION IV FIRST ROUND:	DIVISION V FIRST ROUND:	DIVISION VI FIRST ROUND:	DIVISION VII FIRST ROUND:
Long Beach Poly 61 Fountain Valley 23	Mission Viejo 49 Eitwanda 3	Notre Dame/SO 31 Burrroughs/B 3	Arroyo Grande 27 Royal 7	Centennial/Corona 35 San Geronio 22	El Modena 48 El Dorado 7	Charter Oak 10 Bell Gardens 0
Loyola 28 Eisenhower 14	Upland 28 Beverly Hills 21	Palmdale 21 Beverly Hills 13	Dos Pueblos 19 Rio Mesa 0	J.W. North 63 Paloma Vly 29	Laguna Hills 35 Saddleback 0	El Rancho 24 St. Bernard 23
Santa Margarita 43 Rialto 30	Alta Loma 33 Warren 6	Valencia/V 20 Leuzinger 12	Righetti 31 Santa Barbara 21	Temecula Vly 30 Norco 21	Kennedy 42 Villa Park 35	Schurr 21 California 14
Los Alamitos 28 St. Paul 7	Ayala 45 El Toro 21	Crescenta Vly 55 Little Rock 21	Westlake 24 Channel Islands 7	Cajon 36 Hemet 7	Mayfair 18 Aliso Niguel 15	Rosemead 41 Diamond Ranch 28
Bishop Amat 47 Long Beach Wilson 20	San Clemente 17 Rancho Cucamonga 7	Mira Costa 30 Saugus 21	San Luis Obispo 48 Adolfo Camarillo 27	Valley View 24 Elsinore 21	Newport Harbor 49 Ocean View 0	Los Altos 6 Gabrielino 0
Edison 56 St. John Bosco 34	Dominguez 55 Claremont 27	St. Francis 28 Arcadia 10	Moorpark 35 Buena 14	Santiago/C 45 Colton 14	Cerritos 42 Loara 7	Montebello 27 Arroyo 14
Mater Dei 12 Jordan 7	Damien 14 Trabuco Hills 7	Antelope Vly 35 Muir 7	Ventura 18 Oxnard 2	Murrieta Vly 28 Rancho Verde 7	La Mirada 41 Westminster 14	Santa Fe 31 Alhambra 13
Redlands 17 Marina 14	Chino 42 Downey 10	Hart 48 Redondo 7	Thousand Oaks 55 Santa Maria 28	Arlington 41 Yucaipa 7	Foothill 48 Woodbridge 21	Pomona 24 Serra 15
QUARTERFINALS:	QUARTERFINALS:	QUARTERFINALS:	QUARTERFINALS:	QUARTERFINALS:	QUARTERFINALS:	QUARTERFINALS:
Long Beach Poly 21 Loyola 13	Mission Viejo 31 Upland 10	Palmdale 14 Notre Dame/SO 7	Dos Pueblos 26 Arroyo Grande 23	J.W. North 35 Centennial/Corona 28	Laguna Hills 31 El Modena 24	Charter Oak 36 El Rancho 19
Los Alamitos 29 Santa Margarita 20	Alta Loma 41 Ayala 40	Valencia/V 27 Crescenta Vly 15	Westlake 28 Righetti 7	Temecula Vly 29 Cajon 15	Mayfair 35 Kennedy 21	Rosemead 21 Schurr 14
Edison 47 Bishop Amat 14	San Clemente 28 Dominguez 14	Mira Costa 24 St. Francis 21	San Luis Obispo 48 Moorpark 10	Valley View 28 Santiago/C 24	Newport Harbor 36 Cerritos 25	Los Altos 18 Montebello 14
Mater Dei 44 Redlands 28	Chino 42 Damien 19	Hart 38 Antelope Vly 9	Ventura 28 Thousand Oaks 21	Murrieta Vly 28 Arlington 12	La Mirada 49 Foothill 25	Santa Fe 42 Pomona 20
SEMIFINALS:	SEMIFINALS:	SEMIFINALS:	SEMIFINALS:	SEMIFINALS:	SEMIFINALS:	SEMIFINALS:
Long Beach Poly 28 Alta Loma 7	Mission Viejo 41 Alta Loma 0	Valencia/V 13 Palmdale 0	Dos Pueblos 42 Westlake 21	J.W. North 14 Temecula Vly 13	Mayfair 33 Laguna Hills 18	Charter Oak 31 Rosemead 7
Edison 41 Mater Dei 7	Chino 35 San Clemente 7	Hart 35 Mira Costa 6	San Luis Obispo 21 Ventura 7	Valley View 35 Murrieta Vly 28	La Mirada 13 Newport Harbor 10	Los Altos 34 Santa Fe 0
FINAL:	FINAL:	FINAL:	FINAL:	FINAL:	FINAL:	FINAL:
Long Beach Poly 42 Edison 28	Mission Viejo 18 Chino 9	Hart 42 Valencia/V 13	San Luis Obispo 27 Dos Pueblos 14	J.W. North 21 Valley View 17	Mayfair 22 La Mirada 9	Charter Oak 7 Los Altos 6
DIVISION VIII FIRST ROUND:	DIVISION IX FIRST ROUND:	DIVISION X FIRST ROUND:	DIVISION XI FIRST ROUND:	DIVISION XII FIRST ROUND:	DIVISION XIII FIRST ROUND:	EIGHT-MAN LARGE FIRST ROUND:
La Quinta/LQ 62 Rubidoux 34	South Hills 35 Troy 14	Temple City 40 Gladstone 10	St. Bonaventure 80 Calabasas 13	Paraclete 41 Don Bosco 0	Oaks Chr 27 Pasadena Poly 21	Bloomington Chr 62 Villanova Prep 6
Victor Vly 49 Sultana 35	Los Amigos 38 Costa Mesa 27	Ingelwood 21 Atascadero 0	Verbum Dei 33 Calvary Chp/SA 0	San Jacinto 20 Bishop Union 7	Capistrano Vly Chr 35 Hamilton 6	Lutheran/LA 46 Mericopa 28
Barstow 28 Cathedral City 21	Buena Park 27 Western 21	Morro Bay 14 La Puente 9	Bishop Diego 28 Santa Paula 14	Desert 42 St. Genevieve 36	Trona 56 Twin Pines 6	California Lutheran 46 Viewpoint 7
Notre Vista 34 Rim of the World 17	University 21 Pacifica/GG 10	North Torrance 35 La Salle 12	Valley Chr/C 45 La Salle 12	Mary Star 40 Marshall 19	Arrowhead Chr 50 Flintridge Prep 29	Faith Baptist Mission Prep
Serrano 21 Silverado 7	Valencia/P 17 Northwood 14	Santa Monica 62 Workman 0	Cathedral 62 Whittier Chr 12	Montclair Prep 35 Big Bear 17	Western Chr 25 Brethren Chr 12	Grace Brethren 49 Bakersfield Chr 0
Ramona 56 Indio 28	Fullerton 28 Baldwin Park 3	La Canada 31 St. Joseph/SM 21	Nordhoff 28 Oak Park 15	Kilpatrick 44 Salesian 6	Mammoth 61 Sherman Indian 8	Calvary Chp/M 30 Avalon 28
Burrroughs/R 29 Palm Springs 7	Northview 42 Garden Grove 27	Duarte 36 South Torrance 23	Carpinteria 54 St. Monica 14	Twentynine Palms 25 Murphy 8	Brentwood 24 Ontario Chr 13	Antelope Vly Chr 44 Cuyama Vly 24
Kaiser 48 Apple Vly 0	Brea Olinda 51 Sonora 13	Paso Robles 39 South Pasadena 0	Orange Lutheran 35 Fillmore 14	Mojave 30 Los Angeles Baptist 12	Campbell Hall 41 Lucerne Vly 31	Riverside Chr 50 Pilgrim 0
QUARTERFINALS:	QUARTERFINALS:	QUARTERFINALS:	QUARTERFINALS:	QUARTERFINALS:	QUARTERFINALS:	QUARTERFINALS:
La Quinta/LQ 39 Victor Vly 20	South Hills 46 Los Amigos 0	Inglewood 45 Temple City 21	St. Bonaventure 52 Verbum Dei 6	Paraclete 43 San Jacinto 0	Oaks Chr 28 Capistrano Vly Chr 14	Lutheran/LA 64 Bloomington Chr 40
Barstow 35 Notre Vista 13	Buena Park 31 University 16	North Torrance 23 Morro Bay 20	Valley Chr/C 32 Bishop Diego 19	Mary Star 21 Desert 15	Arrowhead Chr 28 Trona 0	Faith Baptist 31 California Lutheran 20
Ramona 14 Serrano 13	Valencia/P 14 Fullerton 7	Santa Monica 49 La Canada 3	Cathedral 15 Nordhoff 3	Montclair Prep 14 Kilpatrick 0	Mammoth 40 Western Chr 20	Grace Brethren 51 Calvary Chp/M 6
Kaiser 21 Burrroughs/R 14	Brea Olinda 45 Northview 15	Paso Robles 21 Duarte 0	Orange Lutheran 35 Carpinteria 21	Twentynine Palms 34 Mojave 29	Campbell Hall 13 Brentwood 10	Riverside Chr 45 Antelope Vly Chr 0
SEMIFINALS:	SEMIFINALS:	SEMIFINALS:	SEMIFINALS:	SEMIFINALS:	SEMIFINALS:	SEMIFINALS:
La Quinta/LQ 21 Barstow 7	Buena Park 29 South Hills 17	North Torrance 42 Ingelwood 33	St. Bonaventure 56 Valley Chr/C 16	Paraclete 20 Mary Star 6	Arrowhead Chr 30 Oaks Chr 14	Faith Baptist 14 Lutheran/LA 0
Kaiser 30 Ramona 0	Brea Olinda 20 Cathedral/P 3	Santa Monica 26 Paso Robles 14	Orange Lutheran 18 Cathedral 13	Montclair Prep 14 Twentynine Palms 7	Mammoth 47 Campbell Hall 26	Grace Brethren 16 Riverside Chr 0
FINAL:	FINAL:	FINAL:	FINAL:	FINAL:	FINAL:	FINAL:
La Quinta/LQ 21 Kaiser 10	Brea Olinda 45 Buena Park 15	Santa Monica 28 North Torrance 14	St. Bonaventure 49 Orange Lutheran 14	Paraclete 44 Montclair Prep 0	Arrowhead Chr 43 Mammoth 16	Faith Baptist 27 Grace Brethren 24

**8-MAN SMALL
FIRST ROUND:**

Joshua Springs 48
Skyward Chr 0

Desert Chapel 28
Immanuel Chr 20

Rio Hondo Prep 55
Hesperia Chr 14

Kings Chr 59
Liberty Chr 12

Joshua Springs 54
Desert Chapel 6

Rio Hondo Prep 33
Kings Chr 19

FINAL:
Rio Hondo Prep 43 (OT)
Joshua Springs 28



CIF SOUTHERN SECTION - TOYOTA 2001 FOOTBALL CHAMPIONS

DIVISION I Long Beach Poly	DIVISION VI Mayfair	DIVISION XI St. Bonaventure
DIVISION II Mission Viejo	DIVISION VII Charter Oak	DIVISION XII Paraclete
DIVISION III Hart	DIVISION VIII La Quinta/La Quinta	DIVISION XIII Arrowhead Christian
DIVISION IV San Luis Obispo	DIVISION IX Brea Olinda	8-MAN LARGE Faith Baptist
DIVISION V J.W. North	DIVISION X Santa Monica	8-MAN SMALL Rio Hondo Prep

CIF SOUTHERN SECTION - TOYOTA 2001 GIRLS GOLF CHAMPIONSHIPS

GIRLS TEAM FINALS

INDIVIDUAL FINALS

PL.	SCHOOL	SCORE	PL.	PLAYER/SCHOOL	SCORE
1.	Dana Hills	412	1.	Nicole Smith, ML King	70
2.	Long Beach Wilson	413	2.	Aimee Cochran, West Torrance	72
3.	Peninsula	418	3T.	Jennifer Osborn, Marina	73
4.	Palm Desert	428	3T.	Erica Blasberg, Corona	73
5.	Adolfo Camarillo	433	3T.	Irene Cho, Sunny Hills	73
6.	Marina	435	3T.	Sara Trenchel, Dos Pueblos	73
7T.	Villa Park	439	7T.	Julie Kim, Peninsula	74
7T.	Dos Pueblos	439	7T.	Selanee Henderson, Granite Hills	74
9.	Esperanza	443	9T.	Elena Kurokawa, Redondo	75
10T.	Harvard-Westlake	447	9T.	Jen Sanders, Rosary	75
10T.	Redlands		11T.	Ashley Forbes, Palm Desert	76
			11T.	Jesse Marksbury, Yucaipa	76
			11T.	Angela Won, University	76
			11T.	Katherine Hoey, Rancho Cucamonga	76
			11T.	Nikki Imaromma, Notre Dame/SO	76