



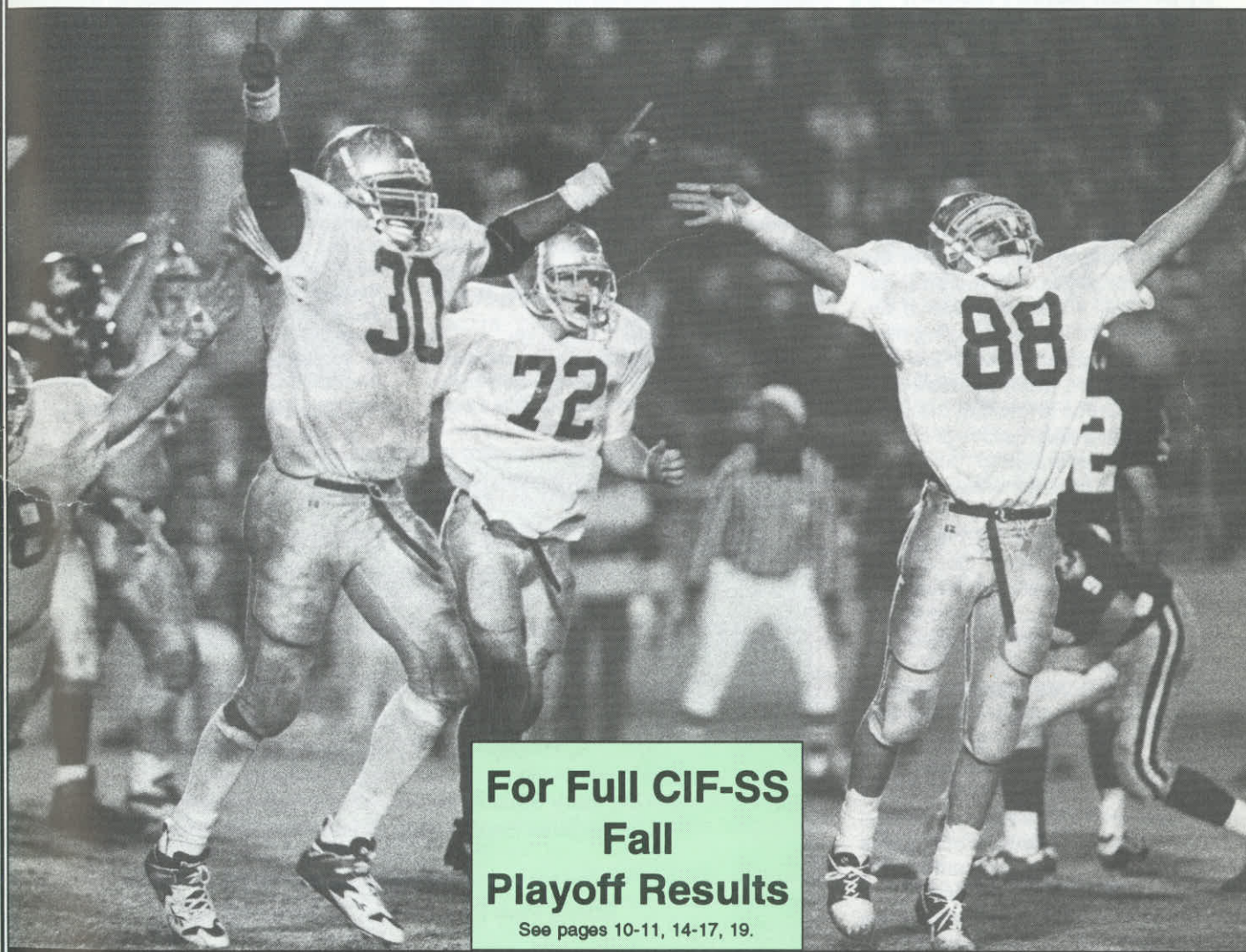
SOUTHERN SECTION

# CIF-SS BULLETIN



VOL. 58, NO. 2

WINTER 1995-96



**For Full CIF-SS  
Fall  
Playoff Results**

See pages 10-11, 14-17, 19.

Photo by Jerry Suifer, Riverside Press Enterprise

**In the game** →



*frontier*

*Serving High School Athletics  
Since 1913*



## PRESIDENT'S MESSAGE



"THANKS COACH"

By Dr. Ken Gunn, President  
CIF-SS Executive Committee

Last week was especially tough for the staff and students at Walnut High School. Our wrestling coach, Wally Curtis, died of a heart attack. It was anything but a complete surprise. Wally had suffered greatly over the last few years and we saw him deteriorate physically right before our eyes. The unique thing about Wally's plight was that the weaker he got physically, the stronger he got mentally. He was always up, always optimistic, and kept telling all of us that he was going to win. He was truly an inspiration. Many of those closest to Coach Curtis knew that the thing keeping him alive was his love of coaching and his attachment to "his wrestlers." Over the last few weeks he had not been strong enough to teach his business classes, but he did his best to get to wrestling practice. On our Dr. Martin Luther King holiday, Wally finished an afternoon practice and left for his dialysis appointment. He died during the treatment.

Coach Wally Curtis was a legend in the wrestling community. He had won just about every honor a coach could achieve. He had won multiple state championships, had coached a host of individual champions and been named coach of the year in a variety of leagues and states. That is not what made Wally special. What made this man truly unique was his total commitment to his sport and his athletes. It was the way he treated others and the high moral and ethical standards he practiced on a daily basis. I never saw a Wally Curtis coached team that wasn't totally prepared. I never saw one of Wally's wrestlers who didn't perform to the best of his ability. I never saw Wally berate, criticize, or even second guess an official. I never heard Wally demean, belittle or make fun of an opponent. I never saw Wally embarrass any athletes. He was the ultimate role model. It was not a surprise that the crowd at his memorial service completely overflowed the

See THANKS COACH page 18.

## CIF-SS COUNCIL MEETING MINUTES October 19, 1995

The October meeting of the CIF Southern Section Council was called to order by President Dr. Ken Gunn at 9:10 a.m., Thursday, October 19, 1995, at the Sequoia Athletic Club in Buena Park. All leagues were present with the exception of the Horizon.

- MINUTES** -- It was moved, seconded and passed to approve the minutes of the CIF-SS Council meeting of April 20, 1995 as mailed.
- STATE CIF OCTOBER ACTION ITEMS** -- Dr. Gary Smidderks, Past President, presented the following agenda items for the October State Federated Council in order to give our delegates voting directions:
  - Wrestling Rule Changes**- The State Wrestling Advisory Committee's recommendation provides for a fourteenth weight class at 215 lbs. effective this year; a Thursday night weigh-in at the CIF State Championships and a revision of CIF rules in order to comply with NFSHSA GUIDELINES FOR 1996-97 - Vote to support.
  - Rotation of State Basketball** - The State CIF Basketball Advisory Committee's recommendation to rotate the State Basketball Finals north and south beginning in 1997 - Vote to send delegates uninstructed.
  - Foreign Student Eligibility** - The Commissioner's Committee's recommendation that State CIF By-Law 211C regarding foreign student eligibility be removed and made a separate By-Law 212 - Vote to support.

- Deletion of Rule 1900 (14-YEAR OLD FOOTBALL RULE)** - Southern Section proposal would allow eligible 14-year old football players participation at the varsity level - Vote to support.
- Open Enrollment** - The State CIF Eligibility Committee recommends adoption of a statewide standard form for Open Enrollment Transfers - Vote to support.
- PLAYOFF REGIONALIZATION PROPOSAL** -- Ray Plutko, Chairman of the Playoff Regionalization Committee reviewed a proposal calling for the regionalization of championship playoffs for the 1996-98 cycle. The intent of the proposal is to stimulate regional interest, while at the same time, maximizing a financial savings to the individual school. Following discussion a motion to postpone all three plans, return a revised proposal to Council for the January Southern Section Council meeting as a non-action item was defeated. Following further discussion, a motion to return Plan #1 and Plan #2 to the playoff regionalization committee for refinement with leagues submitting recommendations for revisions by November 15, 1995 was approved. Revised Plan #1 and #2 would be action items at the January Council meeting. Finally, a motion to postpone Plan #3 for two years was passed.
- PRESIDENT'S REPORT** -- Dr. Ken Gunn, President, announced a copy of the CIF-SS video and the 1994-95 CIF-SS Evaluation Questionnaire

See COUNCIL MEETING page 18.

### California Interscholastic Federation

#### Southern Section

11011 Artesia Blvd. (90703) -- P.O. Box 488 (90702)  
Cerritos, California  
(310) 860-2414 -- FAX (310) 860-1692

#### OFFICERS

Dr. Ken Gunn, Principal  
Walnut High School, President

Dr. Gary Smidderks, Superintendent/Principal  
Los Angeles Baptist High School, Past-President

Tom Triggs, Principal  
Buena Park High School, President-Elect

Margie Godfrey, Principal  
Millikan High School, Treasurer/Coast Area Rep.

Dean Crowley, Commissioner of Athletics

#### BULLETIN EDITOR

Art Munda, Sports Information Coordinator

#### EDITORIAL ASSISTANT

Sharon Hargrove, CIF-SS Secretary

Bulletin published three times yearly by CIF Southern Section

## SOUTHERN SECTION MARKETING UPDATE

### FRONTIER COMMUNICATIONS JOINS SOUTHERN SECTION SPONSORS

The CIF Southern Section welcomes Frontier Communications International Inc. as a sponsor for the 1995-96 school year. The agreement will make them the "Official Telecommunications Company of the CIF-SS."

Said James Traino, Western Regional Manager of Frontier, "Frontier takes great pride in utilizing state of the art technology in order to delight its customers. We also are proud to offer the CIF-SS athletes the opportunity to use this technology to raise funds to help meet their sports teams needs."

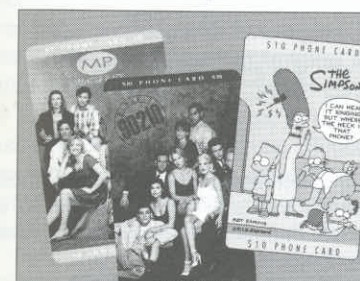
Frontier Corporation, headquartered in Rochester, New York, is one of the nations

leading telecommunications companies. It is the 5th largest in the industry. The company's strategic focus is on integrated communications solutions for its more than 1.5 million customers, no matter where they live, work or travel. Frontier subsidiaries are engaged in long distance, wireless communications, telephone operations, and telecommunications business systems. A recognized leader in technology, efficiency and customer service--and a pioneer in regulatory reform--Frontier's vision is to be the premier company in the telecommunication industry.

One of their featured products is the prepaid phone card which is becoming an extremely recognized product within the United States. In fact, anticipated sales for 1996 should exceed \$1 billion. And one of the fastest growing segments of the prepaid cards is the entertainment cards, of which Frontier offers Melrose Place, Beverly Hills 90210, The Simpsons and the X-Files.

"The CIF Southern Section is indeed pleased with the opportunity to work with such a fine organization as Frontier," said Dean Crowley, CIF Southern Section Commissioner of Athletics. "Their generosity and foresight is and will continue to be an asset to our schools directly, by offsetting

See MARKETING UPDATE page 18.



Entertainment prepaid phone cards

Now you can call long distance, get show updates, play games and hear fun messages with these entertainment prepaid phone cards.

## REAVES NAMED NEW CIF-SS DIRECTOR OF SPORTS MARKETING

Danielle Reaves, a former track, soccer and volleyball standout at Esperanza, has joined the CIF Southern Section as the Director of Sports Marketing. Reaves replaces Chris Thomas who has taken a position with the Southern California Section of the Professional Golfers Association.

Reaves' primary duties will be to conduct the Southern Section's corporate support program, as well as being editor-in-chief of the CIF-SS Championship souvenir programs.

Reaves comes to the CIF-SS from Managed Pharmacy Care, a Pharmacist Benefit Manager, where she developed and implemented a marketing campaign for independent pharmacies. Reaves has also worked at Inland Empire Investment Advisors as a Sales and Marketing Assistant and at the University of Alabama at Birmingham as a Graduate Assistant in charge of business affairs for intercollegiate athletics.

A 1993 Summa Cum Laude graduate of the MBA Program at The University of Alabama at Birmingham, Reaves also received her undergraduate degree in Financial Management at UAB. At UAB, Reaves was

honored as the Best All-Around Player on the UAB Volleyball team, Player of the Year in the Sun Belt Conference and GTE All-American.

As a prep athlete at Esperanza, she was MVP of the Empire League in 1988 and Track and Field MVP of the league that same year.

"We are excited about the addition of Danielle to the Southern Section staff," said Dean Crowley, CIF-SS Commissioner of Athletics. "She brings a great deal of enthusiasm and experience to the office."



## COMMISSIONER'S CORNER

The  
Management  
of a Crowd



By Dean Crowley  
Commissioner of Athletics

Often times the phrase "crowd control" carries a negative connotation. In the mind's eye, the words relate to the prevention of undesirable incidents that seem likely to occur at some athletic contests. However narrow this interpretation may be, it is true in some cases. But looking at the broader picture, such precautionary measures should be taken at all athletic contests involving a substantial number of spectators, regardless of the likelihood of unruly behavior. Crowd control should be a positive subject. Perhaps a more apt phrase might be "crowd management."

The management of crowds at athletic contests today is of more concern than ever before. The verbal and sometimes physical abuse of players and officials has been working its way from the professional level to the college ranks and now, to a greater degree, to the interscholastic level. We in the CIF-SS must insure that our athletic programs will continue to operate under optimum conditions for the benefit and enjoyment of all those involved.

Every school fielding interscholastic athletic teams should assess its crowd management plans. What problems occurred at its interscholastic athletic events last year? How would they most likely be prevented this year? What new problems might arise this year and what can be done to forestall them?

When a significant number of spectators at a high school athletic contest feel free to express disapproval of a decision or the progress of their team by acting in a consistently unsportsmanlike manner, then it is obvious that the administration of at least one of the competing schools has not done its job in preparing for the contest. It matters not whether it is an indoors or an outdoors activity, nor does it matter whether the objectionable behavior is that of students or adults or both. It is squarely up to the school administration to structure its crowd management policies so that such behavior is highly discouraged prior to the contest and acted upon swiftly should it occur at the site.

It is relatively easy to display respect and

See COMMISSIONER'S CORNER page 18.



## MINUTES OF THE EXECUTIVE COMMITTEE MEETING August 12, 1995

The August meeting of the CIF-SS Executive Committee was called to order by President Dr. Ken Gunn at 3:44 p.m. on Saturday, August 12, 1995, at the Balboa Bay Club. All members were present with the exception of Tom Triggs and Fr. Robert Gallagher.

1. MINUTES -- It was moved, seconded and passed to approve the minutes of the CIF-SS Executive Committee of June 28, 1995 as amended.
2. PRESIDENT'S UPDATE -- Dr. Ken Gunn reviewed with the committee the timeline for selection of the State Executive Director.
3. COMMISSIONER'S UPDATE -- Dean Crowley, Commissioner, reviewed the updated financial policies, the D & O insurance policy, the results of a State CIF hearing, and the status of the year end audit. In addition, he reviewed the relegating process for out of cycle relegating. Following discussion a motion to rescind #13 "Protocol for

Releaguing Appeal" of the June 28, 1995, minutes of the Executive Committee meeting was approved.

4. TREASURER'S UPDATE -- Margie Godfrey reviewed with the committee the status of CIF-SS budget as of June 30, 1995. Following discussion regarding a rebate of uncommitted reserves to schools, a motion to distribute approximately \$100,000 to leagues was approved.
5. REGIONALIZATION PROPOSAL -- Dean Crowley, Commissioner, updated the committee regarding the status of the Playoff Regionalization Proposal.
6. NEW SCHOOL MEMBERSHIP -- It was moved, seconded and passed to approve the membership of Mesa Grande Academy on the condition they attend an orientation meeting in the CIF-SS Office.
7. PERSONNEL SESSION -- The Executive Committee went into closed session at 4:15 p.m.

to discuss personnel. At 4:18 p.m. the committee reconvened and returned to the agenda. There being no further business to come before the committee, the meeting was adjourned at 4:19 p.m.

Submitted by:

KAREN HELLYER  
ASSISTANT COMMISSIONER

Approved by:

DEAN CROWLEY  
COMMISSIONER OF ATHLETICS

## MINUTES OF THE EXECUTIVE COMMITTEE MEETING October 4, 1995

The October meeting of the CIF-SS Executive Committee was called to order by President Dr. Ken Gunn at 10:00 a.m., October 4, 1995 at the Ontario Airport Hilton. All members were present.

1. MINUTES -- It was moved, seconded and passed to approve the minutes of the August 12, 1995 Executive Committee meeting.
2. APPEALS SESSION -- Karen Craig, Citrus Belt Releaguing Chairperson, reviewed the relegating process and proposal for the Citrus Belt Area 1996-98 relegating cycle. An appeal from David Ochs, Athletic Director of Rim of the World High School; Mr. Chris Wahle, President of the Board, Rim of the World Unified School District; Walter Harris, Principal of Rim of the World High School; Mr. Peter Shaw, Superintendent of Rim of the World Unified School District, in reference to Rim of the World's placement in the San Andreas League was heard by the Committee. Speaking in opposition to the appeal and in support of the area proposal were Roger Blake, Elsinore Unified School District Athletic Director Representative; Dayton Gilleland, Principal of Norte Vista High School; and Dave Reid, Athletic Director of Santiago High School (Corona). Following discussion, a motion to deny the appeal was approved.
3. REVIEW SUMMER WORKSHOP -- Dr. Ken Gunn, President, reviewed the summer workshop process. Following discussion, it was determined that a committee will review the 1994-95 goals and objectives and make recommendations for the 1995-96 school year. Members of the committee are Dale Mitchell, Paul Breit, Gary Smidderks and Dean Crowley.
4. ACCEPTANCE OF THE 1994-95 AUDIT REPORT -- Dr. Ken Gunn introduced auditor Gary Turner of the firm Turner, Warren, Hwang and Conrad. Mr. Turner reviewed the recently completed audit of the Southern Section financial records for the 1994-95 fiscal year. Following discussion, a motion to accept and file the financial and management reports as submitted was approved.
5. NEW SCHOOL MEMBERSHIP -- It was moved, seconded and passed to approve the membership of International Polytechnic High

School on condition they attend an orientation meeting in the CIF-SS Office.

6. STATE CIF OCTOBER ACTION ITEMS --
  - A. Wrestling Rule Changes - Dr. Gary Smidderks reviewed the proposed three part change. Following discussion, it was moved, seconded and passed to recommend Council support the entire proposal.
  - B. Rotation of State Basketball - Dr. Gary Smidderks explained the recommendation to rotate the State Basketball Finals north and south beginning in 1997. Following discussion it was moved, seconded and passed to recommend the Council deny the proposal in its present format.
  - C. Foreign Student Eligibility - Dr. Gary Smidderks reviewed the recommendation that State By-Law 211C be made a separate by-law. Following discussion, it was moved, seconded and passed to recommend Council support the proposal.
  - D. Fourteen Year Old Football Rule - Dr. Gary Smidderks explained the proposal to delete the rule prohibiting a 14-year old from participating in varsity football. Following discussion, it was moved, seconded and passed to recommend the Council support the proposal due to the fact the original proposal came from the Southern Section.
  - E. Open Enrollment - Dr. Gary Smidderks reviewed the proposal to adopt a state wide standard form for open enrollment transfers. Following discussion, it was moved, seconded and passed to recommend the Council support the proposal.
7. PRESIDENT'S REPORT -- Dr. Ken Gunn, President of the Southern Section Council, reviewed the new agenda format for the Executive Committee meeting and the Regionalization Proposal. In addition, he announced that Jack Hayes has been selected as the new State CIF Executive Director. Dr. Gunn introduced Tom Triggs who updated the committee on the State Strategic Planning process; and Dr. Gary Smidderks explained the weighted voting issue is currently in committee for further study.
8. COMMISSIONER'S REPORT -- Dean Crowley, Commissioner, reviewed the impact of jury duty on the Southern Section Office staff, the

concept of grant writing for non profit organizations and the status of AB1655 - Officials as Independent Contractors which has now been signed by the governor.

9. ATHLETIC DIRECTORS REPORTS -- Donna Gunstream, Girls' Athletic Directors Representative, reported on the coalition for youth, the new CTA President, and the formation of a L.A./Metro Athletic Directors Association. In addition, Donn Clickard, Boys' Athletic Directors Representative reviewed the upcoming presentation at Cal Poly San Luis Obispo by Commissioner Crowley and a working handbook for coaches.
  10. TREASURER'S REPORT -- Margie Godfrey reviewed with the committee the final 1994-95 budget report which includes distribution of excess corporate funds to leagues in the amount of \$98,500.
  11. AREA REPRESENTATIVE REPORTS -- Executive Committee Area Representatives reported on concerns regarding unsportsmanlike conduct, hardship appeals, independent study and eligibility problems, football recruiting, officials' fees, regionalization proposal and relegating.
  12. STATE AND SECTION MARKETING REPORT -- Dr. Gary Smidderks reported that Toyota, Dial and Tombstone Pizza are no longer state wide sponsors. In addition, ARCO *am/pm* will become a state wide corporate sponsor. Dr. Smidderks praised Chris Thomas for the excellent work he is doing in the area of corporate support in spite of the limitations placed on him by the State marketing effort. There being no further business to come before the committee, the meeting adjourned at 4:20 p.m.
- Submitted by:
- KAREN HELLYER  
ASSISTANT COMMISSIONER
- Approved by:
- DEAN CROWLEY  
COMMISSIONER OF ATHLETICS

## STATE-WIDE MARKETING UPDATE

### STATE CIF WELCOMES ARCO *am/pm* AS LATEST TITLE SPONSOR

Reinforcing its commitment to California youth, ARCO *am/pm* is the title sponsor of the California Interscholastic Federation (CIF) for the 1995-96, 1996-97 and 1997-98 academic years. Under the agreement, ARCO Products Company, the refining and marketing division of Atlantic Richfield Company, will pay a sponsorship contribution of \$500,000 per year over the next three years.

"We are very excited about finalizing our sponsorship agreement with CIF," said Steve Rullo, Senior Vice President of Marketing for ARCO Products Company. "Now our *am/pm* franchises and their employees can begin working with local high schools to help raise much needed funding for their athletic budgets."

Through its sponsorship, ARCO *am/pm* assists CIF in ensuring that athletics continue to be a viable part of both public and private high school extracurricular activities throughout the state.

"Not only will participating high schools benefit directly from these fund-raisers, but ARCO's sponsorship enables CIF and its 10 sections to continue holding key high school play-off and championship games in first class facilities while keeping annual CIF fees to a minimum," said Jack Hayes, CIF Executive Director.

Displaying their excitement for the spon-

sorship, ARCO *am/pm* executives assisted in the awards presentations at many of the fall CIF championships. One executive of ARCO *am/pm*, James Scourkes, participated in the Division I football championship. Throughout the coming year, ARCO *am/pm* will continue to take part in CIF events, lending their support for high school athletics and their local teams.

ARCO and CIF are currently rolling-out a two-part promotional program that is designed to help raise community awareness of the need for public support of prep athletic programs, as well as assist local high schools in generating additional funding for all sports. Approximately 550,000 young men and women at more than 1,100 public and private high schools in California participate in CIF sports annually.

To help develop community interaction between local high schools and nearby *am/pm* convenience stores, ARCO will offer and special "Support Our High School Athletics" promotion at participating locations where customers can purchase a 64oz. fountain drink for just \$1.29.

"We hope to begin developing a strong sense of community between the local high school and the neighborhood *am/pm*," said Karen Eadon, ARCO's Vice President of Retail Marketing. "A promotion like this helps raise awareness of the importance community participation plays in our high school athletic programs."

A second promotion that began this fall enables high schools to raise funds directly for their athletic programs by selling CIF *am/pm* sports bottles filled with more than \$100 worth of discount savings certificates for Wilson Sporting Goods. Once purchased, buyers can also use their sports bottles for special refill drinks for 59 cents at participating *am/pm* locations. Each school athletic group participating in the program sets its own price for the special sports bottles.

"The potential for success and the variety of options for in-school sales promotions like this are tremendous for the athletic department since each sport can tailor its own campaign by offering specialized sport specific discount coupons," Eadon said.

"The opportunity for raising additional funds for high school athletics through our affiliation with ARCO and *am/pm* is just waiting for us. We plan to take full advantage of this partnership by encouraging all schools sports booster groups and fund-raisers to look closely at this relationship as a significant way to help financially support high school athletics and supplement team budgets," said the CIF's Hayes.

MARK YOUR CALENDARS  
FOR THE

HERFF JONES  
CIF-SS  
INVITATIONAL  
GOLF  
TOURNAMENT

JUNE 22, 1996

PALM SPRINGS,  
CALIFORNIA

SHOTGUN SCRAMBLE!

WINNERS RECEIVE  
A CUSTOM DESIGNED  
CIF CHAMPIONSHIP RING!

GREAT TEE PRIZES  
AND RAFFLE  
SILENT AUCTION!

DON'T MISS  
THE FUN AND  
THE CHANCE  
TO SUPPORT  
HIGH SCHOOL  
GOLF!!

HOTEL PACKAGES  
AVAILABLE

FOR MORE  
DETAILS CALL  
(800) 729-7318

 HERFF JONES  
Official Sponsor Of The CIF

What makes this sports bottle different?

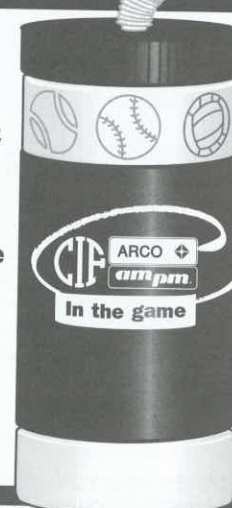
You get over **\$100.00** in value for just **\$3-\$10**  
Suggested Price

and you help raise funds for our school sports!

You'll find over \$100 worth of savings on Wilson Sporting Goods inside every *am/pm* sports bottle. PLUS you get unlimited fountain refills at participating *am/pm*'s for the special low price of 59¢!

\*Offer good at participating locations. Prices may vary.

This exciting fundraising program is a joint venture between ARCO, its *am/pm* mini markets, and Wilson Sporting Goods. Look for these value added sports bottles on sale at your school events!





## MINUTES OF THE EXECUTIVE COMMITTEE MEETING November 29, 1995

The November meeting of the CIF-SS Executive Committee was called to order by President Dr. Ken Gunn at 1:03 p.m., Wednesday, November 29, 1995 at the CIF Southern Section Office. All members were present with the exception of Dr. Liza Daniels and Fr. Robert Gallagher.

**1. MINUTES** -- It was moved, seconded and passed to approve the October 4, 1995 minutes of the CIF-SS Executive Committee meeting.

**2. PUBLIC HEARING SESSION** -- Dr. David Long, Superintendent Representative, discussed concerns regarding basketball tournaments hosted by outside promoters.

**3. APPEALS SESSION** --

**A. Notre Dame High School Appeal** -- An appeal from David Doyle, principal of Notre Dame High School and Kevin Rooney, athletic director of Notre Dame High School in reference to Notre Dame's league placement in football by the C.A.A. was heard by the committee. Speaking in opposition to the appeal and in support of the C.A.A. league placement of Notre Dame, was Father Milbauer, president of the C.A.A. Following discussion it was moved, seconded and passed to direct all leagues involved that any readjustment during the relegating/playoff grouping cycle would need unanimous approval of all parties.

**B. Culver City High School Appeal** -- An appeal from Lou Lichtl, assistant principal, Culver City High School; Jerry Chabola, athletic director, Culver City High School and Herb Hinsche, assistant principal, Mira Costa High School, in reference to the South Bay area football proposal was heard by the committee. Speaking in opposition to the appeal and in support of the South Bay area football proposal was John Stevenson, athletic director of El Segundo High School. Following discussion it was moved, seconded and passed to direct all leagues involved that any readjustment during the relegating/playoff grouping cycle would need unanimous approval of all parties.

**4. WRESTLING RULE INTERPRETATION** -- Assistant Commissioner Bill Clark reviewed background information pertaining to Calvary Chapel High School's request for a reversal of the current Southern Section definition that freestyle and greco-roman wrestling are considered the same sport. Following discussion, a motion to recognize freestyle and greco-roman wrestling as separate and distinct sports was approved.

**5. FOOTBALL DATE WAIVER REQUEST** --

**A. Sunny Hills High School Waiver Request** -- Loring Davies, principal of Sunny Hills High School reviewed a request of an early start for the first football game in 1996 to be played in Hawaii. Following discussion, a motion was made and passed to approve the request based on the following criteria: 1) Sunny Hills High School seek school board approval; 2) obtain league approval; 3) request alternate three week summer dead period and 4) during period of September 2 through September 14, physical conditioning only, after school, would be allowed as defined in Rule 1903. The school will submit a practice plan to the CIF-SS Office.

**B. St. Paul High School Waiver Request** -- Robert Oviedo, athletic director of St. Paul High School reviewed a request of an early start for the first football game in 1996 to be played in Hawaii. Following discussion a motion was made and

passed to approve the request based on the following criteria: 1) St. Paul seek Archdiocese approval; 2) obtain league approval; 3) request alternate three week summer dead period and 4) during period of September 2 through September 14, physical conditioning only, after school, would be allowed as defined in Rule 1903. The school will submit a practice plan to the CIF-SS Office.

**6. PROPOSED EMPLOYEE POLICY CHANGE** -- Commissioner Dean Crowley reviewed the impact jury duty has had on the CIF-SS Office staff. Following discussion, a motion to add the following language, "employees will be eligible for monetary compensated jury duty for a maximum of ten days, once every three years" was approved.

**7. NEW SCHOOL MEMBERSHIP** -- It was moved, seconded and passed to approve membership of Delphi Academy on condition they attend an in-service meeting at the CIF-SS Office.

**8. COMMISSIONER'S REPORT** -- Dean Crowley, commissioner, introduced Danielle Reaves, the new CIF-SS Coordinator of Sports Marketing; commended Mark Keppel High School on their demonstration of sportsmanship and reviewed three legal issues. Additionally, he explained that Templeton, Coast Union and Mission Prep high schools will be leaving the CIF Southern Section to join the CIF Central Section next year while Morro Bay High School will participate in the Los Padres League.

**9. TREASURER'S REPORT** -- Margie Godfrey reviewed the management report items from the annual audit submitted by Shirley Frazier, Director of Budget and Finance.

**10. SUPERINTENDENT'S REPORT** -- Dr. David Long discussed benefits of involving superintendents and school board members in state and local championships.

**11. ATHLETIC DIRECTORS' REPORT** -- Donna Gunstream, Girls' Athletic Director Representative, reported on the organizational meeting held on October 19, 1995 following the CIF-SS Council meeting in an effort to assist in the formation of a new L.A./Metro Athletic Directors' Association. In addition, Donn Clickard, Boys' Athletic Director Representative reported on the national Athletic Directors' Convention December 16-20, 1995 in San Diego. Also, he expressed concerns regarding outside business groups profiting from misrepresenting their relationship with high school sports programs.

**12. AREA REPRESENTATIVES REPORTS** -- Executive Committee Area Representatives discussed football playoffs; the regionalization proposal; relegating; sportsmanship framework; appeals hearings; intra/interdistrict transfers; tennis playoffs and the Symposium.

**13. STATE CIF OCTOBER MEETING REPORT** -- Dr. Gary Smidderks reviewed the results of action items at the October meeting of the State Federated Council.

Items approved:

**A. Modification of Article 30, Section 3002.C**, allowing for a Thursday night weigh-in at California State Wrestling Championships.

**B. Addition of Article 30, Section 3002.D**, fourteenth weight class at 215 lbs.

**C. Modification of Article 211.C** regarding Foreign Student Eligibility.

Item defeated:

**A. Proposal for Deletion of Rule 1900.**

Item tabled:

**A. Rotation of State Basketball Tournament, February Action Items:**

**A. Modification of Article 30, Section 3002.A** regarding revision of official weigh-in bylaws to meet NFSA guidelines by 1996-97.

**B. Modification of Article 11, Section 1101** regarding the Appeals Process.

**C. Modification of 222.B and Open Enrollment Form.**

**14. STATE GEOGRAPHICAL BOUNDARIES REPORT** -- Tom Triggs updated the committee regarding the results of the October 27, 1995 meeting of the State CIF committee which will be recommending to the State Federated Council two options for consideration. Option one is status quo and option two is the four region configuration.

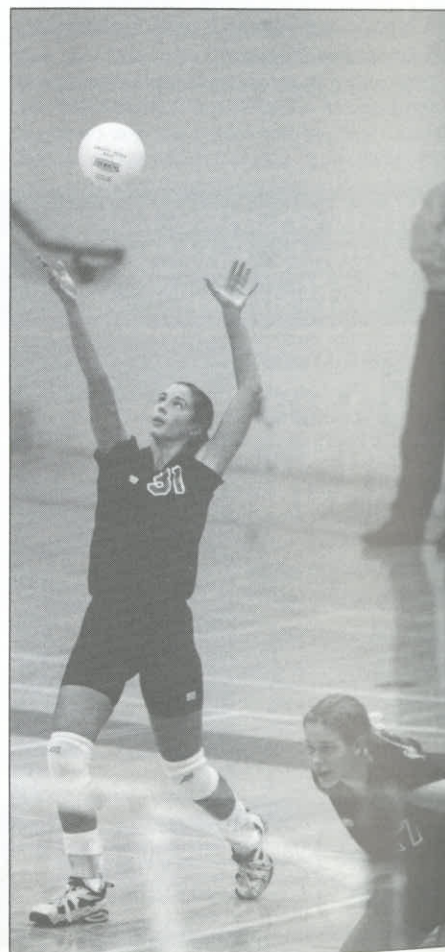
There being no further business to come before the committee, the meeting adjourned at 5:12 p.m.

Submitted by:

KAREN HELLYER  
ASSISTANT COMMISSIONER

Approved by:

DEAN CROWLEY  
COMMISSIONER OF ATHLETICS



## ATHLETIC ADMINISTRATORS SYMPOSIUM TACKLES SPORTS MARKETING

The 16th Annual Athletic Administrators Symposium took on a different look in 1996. This year's list of workshops showcased a topic that is essential to the athletic programs of today, MARKETING!

With the school athletic budgets tighter than ever, this event should help you maximize your existing funds while helping out in your fundraising efforts.

This year's trio of speakers featured a pair of the sports industry's finest marketing experts, plus one of the greatest female athletes ever.

Roy Englebrecht, President and Managing Partner of the Anaheim Piranhas of the Arena Football League, puts new meaning to the word, promotions. As the Director of Promotions for the Los Angeles Lakers, Los Angeles Kings and the Forum, Englebrecht introduced innovations such as the world famous Laker Girls. Englebrecht has also been involved in professional baseball, having served as Executive Vice President of



**ROY ENGLEBRECHT**

the highly successful Rancho Cucamonga Quakes.

A successful promoter, Englebrecht is the creator of the "Battle in the Ballroom" a long running series of boxing events at the Irvine Marriott and is still active with the Quakes, serving on the club's Board of Directors.

Bill Robertson begins his third year as Director of Public Relations of Disney Sports Enterprises, Inc.

Robertson joined Disney from the NBA's Minnesota Timberwolves and the Target Center, where he was in charge of the arena's events schedule including Davis Cup Tennis, NIT Basketball and the 1994 NBA All-Star Game. Bill is a graduate of Cal State Fullerton.

The symposium's keynote speaker is one of the finest female athletes ever to come out of the CIF Southern Section. Last year, Ann Meyers Drysdale was inducted into the National High School Sports Hall of Fame.

A graduate of Sonora High School in La Habra, Ann earned 13 most valuable player



**BILL ROBERTSON**

awards in her prep sports career. Due to the limited opportunities in women's athletics in the 1970's, it is believed that Ann was the first girl ever to play on a boys high school basketball team.

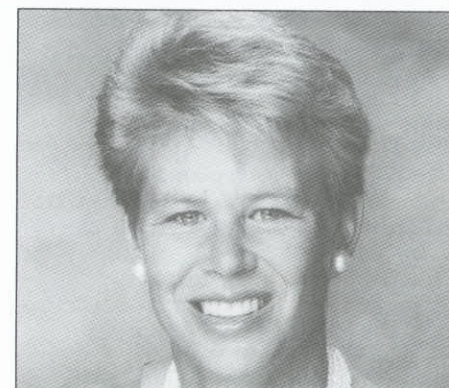
Ann was also the first woman to receive a full athletic scholarship to UCLA. She holds nearly all the women's basketball records at UCLA and became the first woman ever to have her jersey number retired by the school. She was also the first four-time Kodak All-American and received the Broderick Cup in 1978.

Ann's other "firsts" include being the first high school girls basketball player chosen to play on the U.S. National Team and she was the first woman to be signed to an NBA contract when she signed as a free agent with the Indiana Pacers.

Currently, Ann is a broadcaster for CBS, TBS, and ESPN.

Aside from the words of wisdom from these fine speakers, the symposium featured many vendors who always have a wonderful selection of new products and ideas for your sporting events and fund raisers.

The Southern Section enjoyed presenting this year's symposium and hopes that you picked up a great deal of information that can be applied at your school, but that you also had a lot of fun.



**ANN MEYERS DRYSDALE**

## RULE REVIEW



Sports  
Calendar  
Jumps A  
Week

By Bill Clark  
CIF-SS Assistant Commissioner

Principals, Athletic Directors, Coaches, and Student Athletes mark your calendars! The 1996-97 CIF Southern Section Sports Calendar is out and the start dates of all the seasons of sport are moved forward one week. As previously communicated to your schools, the seasons of sport will commence according to the following schedule - fall - Aug. 26, winter - Nov. 16, and spring - Feb. 22.

Every four to five years, the master sports calendar is adjusted according to state guidelines and to align the playoffs and championships with the major holidays and other important dates. For example, water polo championships always fall on the Wednesday preceding Thanksgiving and the football championships are played on the third weekend after "Turkey Day."

This change may seem insignificant to many, but the scheduling of games and tournaments rely heavily on this document. Tournament managers have to be careful not to schedule events in conflict with possible league championships and other meaningful dates. Administrators must pay close attention to conditioning periods, allowable start dates for competition and summer dead periods.

Do not be alarmed, the length of season remains the same and playoff calendars will also be moved up a week. Basketball and soccer will see championships held the second weekend of March (Mar. 7 & 8) in 1997 as opposed to the first weekend (Mar 1 & 2) this year. Track and Field divisional championships will be on May 24, 1997, whereas this year's finals are slated for May 18. State championships are also being moved up accordingly.

Administrators, Coaches, and the Student Athletes, please plan appropriately. You can now outline your vacations, try-outs, tournaments, and your time away from sports next school year according to this calendar.



# JOHN KENTERA EMCEES 1995 FOOTBALL PRESS CONFERENCE

The CIF Southern Section was pleased to have one of the great supporters of high school sports in southern California as its Master of Ceremonies at the 20th Annual Football Press Conference Luncheon held at the Sequoia Athletic Club in Buena Park on December 4, 1995.

"The Coach" John Kentera of XTRA SPORTS RADIO 690, emceed the conference, which is intended to bring together the coaches and several players who participated in the championship contests of the 11 divisions of football, with the representatives of the local media. In addition, the champions of the two 8-man divisions were in attendance.

Kentera hosts the top-rated high school sports show on XTRA SPORTS. He is a sideline reporter for XTRA's broadcasts of San Diego Charger football games and hosts Charger Talk, XTRA's post-game show. John now has his own general topic show on



"THE COACH" JOHN KENTERA as he speaks at Press Conference

Monday through Friday, midnight to 2:00 p.m.

The press conference gives the media an excellent opportunity for advanced interviews, as well as meeting the coaches and players of teams they may not usually cover. It is also a great way of promoting sportsmanship between the competing teams, by allowing the players to meet each other in a friendly environment.

Also on hand at the press conference were Dr. Ken Gunn, President of the CIF Southern Section Council; Margie Godfrey, Treasurer of the Council, Donn Clickard, Executive Committee Member; Dean Crowley, CIF-SS Commissioner of Athletics; Bill Clark and Karen Hellyer, Assistant Commissioners and numerous Southern Section corporate sponsors.

A Southern Section thank you to John Kentera for a job well done and for his continuing support of Southern Section athletics.

# NEWLY FORMED HUMAN RELATIONS COMMITTEE HOLDS FIRST MEETING

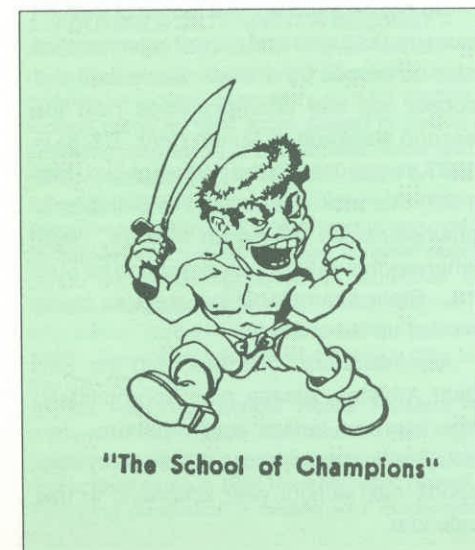
CERRITOS — In the first time in CIF Southern Section history, a Committee on Human Relations was formed to "Come together for the youth." The newly formed committee was the brain child of the Reverend Lloyd Wilkins - the first Student Body President of Centennial High School, Fred Kennedy - a well-respected administrator in the Compton Unified School District, and Lee Sampson an outstanding athlete at Centennial with the aid of CIF-SS Commissioner of Athletics, Dean Crowley.

The inaugural meeting was held at CIF-SS headquarters on January 11, 1996, and the main topic on the agenda was the identification of the purpose and the direction of the Committee. The overwhelming concern was that the CIF Southern Section needed to keep on striving to "level the playing field," that there must be equal opportunities to participate at the highest level of competition available. Other concerns included the use of racial slurs during contests, trash talk, and

taunting. Among the topics discussed were sensitivity training for coaches, officials, and the school population with regards to today's racial climate.

"This is a very exciting time for high school athletics," said Crowley. "This has been a long time coming and the CIF Southern Section is more committed than ever to the cause providing our kids with a safe and fair place to compete in sports activities."

# COMPTON HIGH CELEBRATES 100 YEARS OF EXCELLENCE



From a one room schoolhouse in 1896 to a school with nearly 1800 students, Compton High School has enjoyed tremendous academic and athletic success. In 1996, the school celebrates the 100th Anniversary of the school's opening with numerous events throughout the year.

The Compton High School 100th Year Celebration Committee, chaired by Michael Hopwood, has put together a calendar that is sure to "rekindle the pride of the alumni, teachers, and the community to assist Compton High in its journey to recovery and rediscovery."

The year long celebration kicked off with a parade through downtown Compton on December 9. On January 4, the school had its alumni basketball game at the Eddie Thomas Gymnasium. The game featured mem-

bers of the teams that won back-to-back CIF Southern Section Championships in 1968 and 1969 against a group of former Compton High players. Also honored at the alumni game were other past basketball championship squads including the first back-to-back CIF-SS champions of 1951 and 1952.

Among the many activities planned for the centennial celebration are Compton Night with the Clippers (Clippers vs. Lakers, Feb. 22), Senior Breakfast and Scholarship Award Program (June 15), 100 Year Cook-off and Vintage Car Show (July 6), Tri-School Dance Marathon (August 17), Alumni Football Game (Sept.) and the Christmas Party (Dec. 21).

For more information on the Compton High School 100th Year Celebration, please contact: Ellery Street at Compton High School (310) 635-3881.

# HIGH SCHOOL ATHLETICS PARTICIPATION SECOND HIGHEST IN HISTORY

Participation in high school athletic programs has increased for the sixth consecutive year, according to a survey conducted by the National Federation of State High School Associations.

Based on figures from the 51 state high school athletic/activity associations, participation in high school athletics in 1994-95 was 5,794,429, an increase of nearly 180,000 from the numbers on 1993-94. The 1994-95 also marks the second highest mark in the 25 years that the survey has been conducted. The top figure belongs to the "baby boom" year of 1977-78 (6,450,482).

Girls participation increased 115,706 from the previous year to 2,240,461 in 1994-95. Boys participation also increased, with 3,536,359 athletes in 1994-95, an increase of 57,829 from the previous year. The total figure of 5,794,429 includes 17,609 participants in co-educational sports.

In the girls athletic programs, soccer boasts the largest gain in popularity, with 25,177 new participants this past year and a total of 191,350. To put the increase in perspective, the 1979 survey showed a total of 23,475 girls soccer athletes. The increase also boosts girls soccer from No. 12 to No. 5 in

popularity. No. 1 in popularity in the girls sports is still basketball with 426,947 participants.

Football displays the largest gain in participation on the boys sports, with an increase of 27,113 athletes to 955,247. Although football was the top gainer in participants, it also had the largest drop in school sponsorship, losing 161 schools in the past year. However, football remains the most popular boys sport.

In the listing of participants by state, California takes second (488,411) with only Texas also having more high school athletes (664,098).

## TEN MOST POPULAR BOYS SPORTS

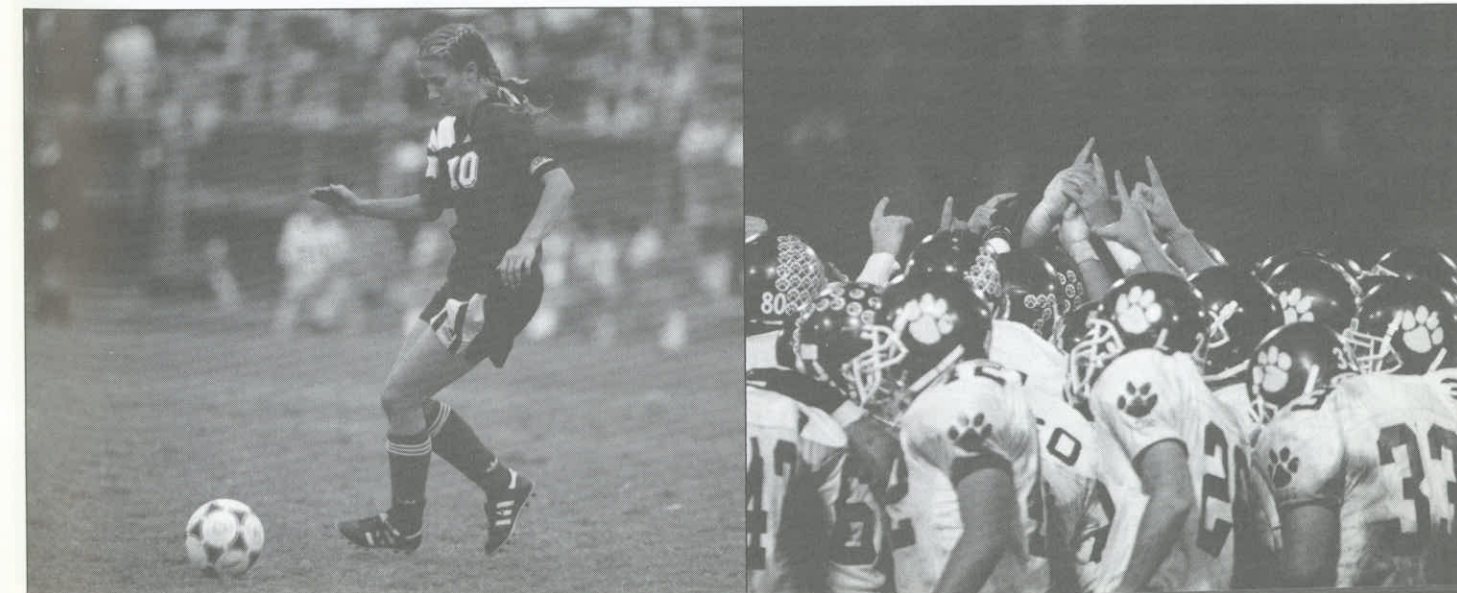
SCHOOLS	PARTICIPANTS
1. Basketball .....	16,480
2. Track & Field (Outdoor).....	14,248
3. Baseball.....	14,078
4. Football.....	13,877
5. Cross Contry .....	11,196
6. Golf.....	10,954
7. Tennis.....	9,058
8. Wrestling.....	8,559
9. Soccer .....	7,905
10. Swimming & Diving .....	4,763

SCHOOLS	PARTICIPANTS
1. Football.....	955,247
2. Basketball.....	540,269
3. Baseball.....	440,503
4. Track & Field (Outdoor).....	430,807
5. Soccer .....	272,810
6. Wrestling .....	216,453
7. Cross Country .....	163,829
8. Golf.....	133,705
9. Tennis.....	132,735
10. Swimming & Diving .....	80,089

## TEN MOST POPULAR GIRLS SPORTS

SCHOOLS	PARTICIPANTS
1. Basketball .....	16,029
2. Track & Field (Outdoor).....	13,940
3. Volleyball .....	12,537
4. Softball (Fast Pitch).....	10,708
5. Cross Country .....	10,599
6. Tennis.....	10,270
7. Soccer .....	6,057
8. Golf .....	5,426
9. Swimming & Diving .....	4,817
10. Competitive Spirit Squads.....	1,804

SCHOOLS	PARTICIPANTS
1. Basketball .....	426,947
2. Track & Field (Outdoor).....	360,223
3. Volleyball .....	340,176
4. Softball (Fast Pitch).....	278,395
5. Soccer .....	191,350
6. Tennis.....	139,157
7. Cross Country .....	133,551
8. Swimming & Diving .....	106,467
9. Field Hockey .....	54,359
10. Softball (Slow Pitch).....	35,691

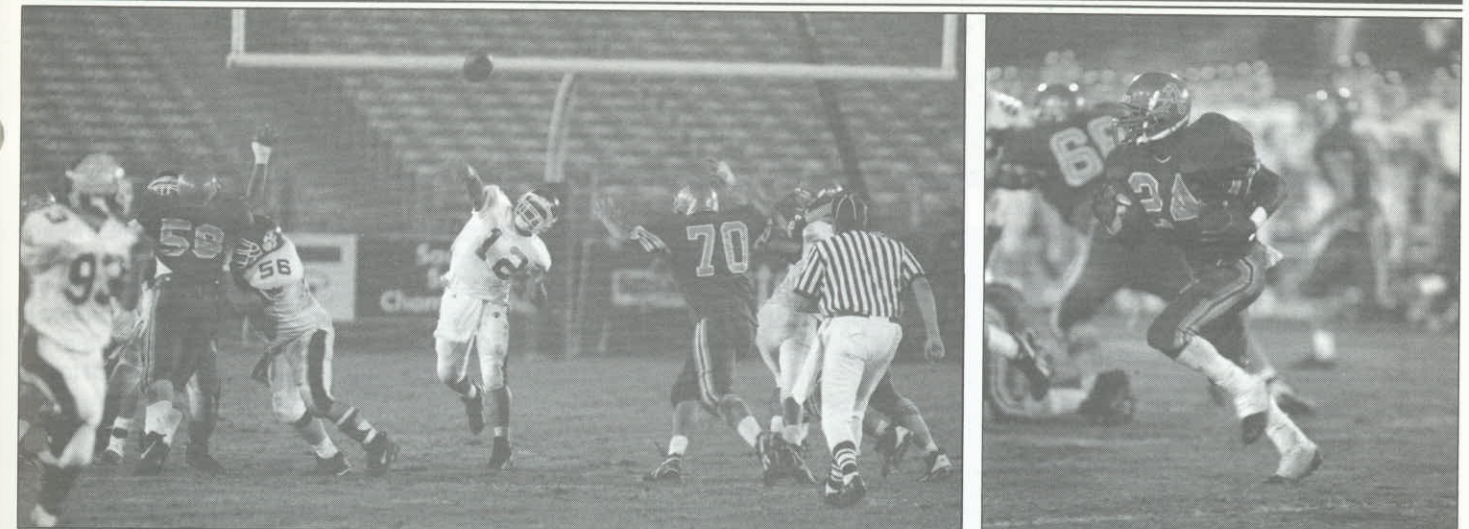




# SOUTHERN SECTION CIF ARCO am/pm 1995 FOOTBALL PLAYOFF RESULTS

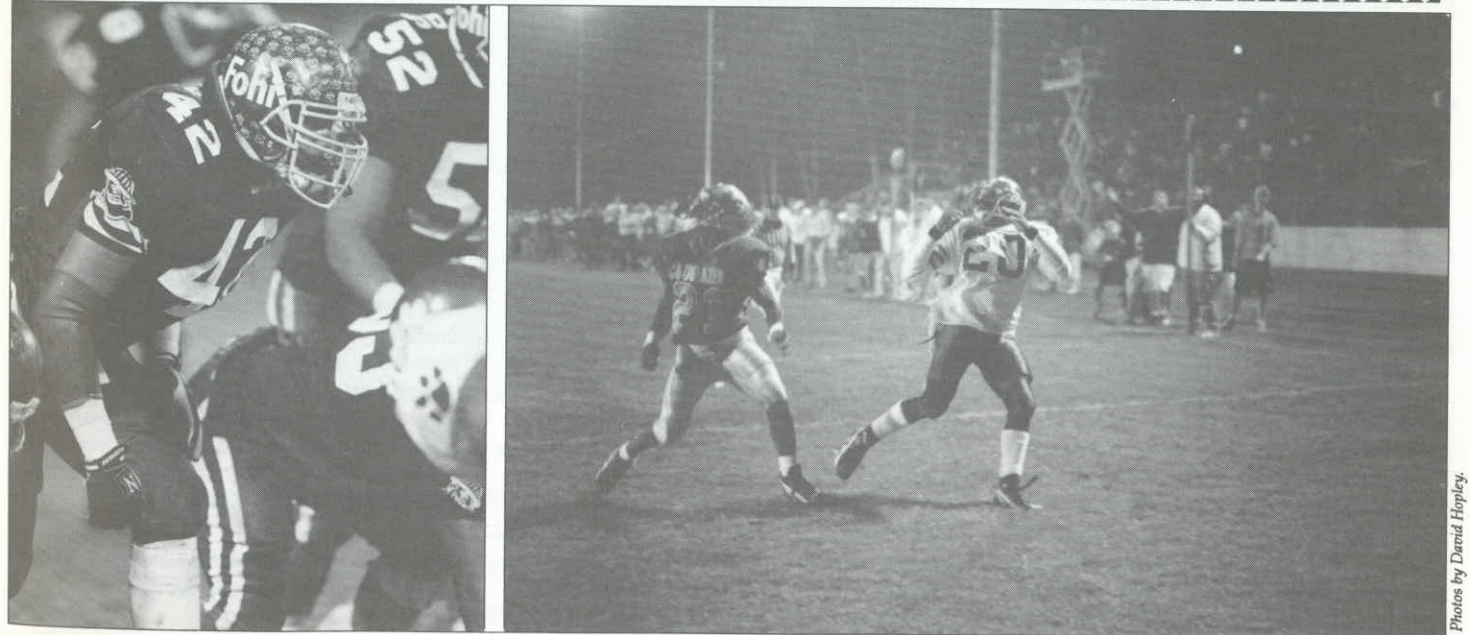
<p><b>DIVISION I</b> FIRST ROUND:</p> <p>Fontana 27 Long Beach Wilson 7</p> <p>Loyola 38 Fountain Vly 22</p> <p>Mater Dei 28 St. John Bosco 26</p> <p>Los Alamitos 40 Lakewood 7</p> <p>Redlands 38 Esperanza 31</p> <p>Bishop Amat 31 San Clemente 21</p> <p>Capistrano Vly 30 Eisenhower 10</p> <p>Long Beach Poly 40 Edison 14</p> <p><b>QUARTERFINALS:</b></p> <p>Loyola 31 Fontana 15</p> <p>Los Alamitos 23 Mater Dei 14</p> <p>Bishop Amat 48 Redlands 30</p> <p>Long Beach Poly 24 Capistrano Vly 21</p> <p><b>SEMIFINALS:</b></p> <p>Loyola 37 Los Alamitos 34</p> <p>Bishop Amat 28 Long Beach Poly 27</p> <p><b>FINALS:</b></p> <p>Bishop Amat 14 Loyola 10</p>	<p><b>DIVISION II</b> FIRST ROUND:</p> <p>Antelope Vly 42 Pasadena 7</p> <p>Saugus 17 Santa Monica 10</p> <p>Hawthorne 42 Huir 22</p> <p>Downey 28 Canyon/C.C. 26</p> <p>Hart 56 Inglewood 20</p> <p>Dominguez 21 Quartz Hill 10</p> <p>Arcadia 8 Paramount 0</p> <p>Peninsula 52 Burroughs/R. 6</p> <p><b>QUARTERFINALS:</b></p> <p>Antelope Vly 42 Saugus 14</p> <p>Downey 30 Hawthorne 25</p> <p>Hart 42 Dominguez 12</p> <p>Peninsula 43 Arcadia 6</p> <p><b>SEMIFINALS:</b></p> <p>Antelope Vly 48 Downey 3</p> <p>Hart 37 Peninsula 3</p> <p><b>FINALS:</b></p> <p>Hart 35 Antelope Vly 28</p>	<p><b>DIVISION III</b> FIRST ROUND:</p> <p>Notre Dame/S.O. 37 Buena 12</p> <p>Westlake 35 Bell Gardens 14</p> <p>Ayala 42 Dos Pueblos 17</p> <p>Newbury Park 43 St. Francis 10</p> <p>Chaminade 34 Alhambra 26</p> <p>Nogales 21 Santa Barbara 0</p> <p>Thousand Oaks 20 Serra 14 (OT)</p> <p>Diamond Bar 46 Montebello 0</p> <p><b>QUARTERFINALS:</b></p> <p>Westlake 28 Notre Dame/S.O. 21</p> <p>Newbury Park 49 Ayala 29</p> <p>Chaminade 28 Nogales 0</p> <p>Diamond Bar 31 Thousand Oaks 19</p> <p><b>SEMIFINALS:</b></p> <p>Newbury Park 22 Westlake 15</p> <p>Diamond Bar 14 Chaminade 10</p> <p><b>FINALS:</b></p> <p>Diamond Bar 30 Newbury Park 21</p>	<p><b>DIVISION IV</b> FIRST ROUND:</p> <p>J.W. North 34 Palm Desert 9</p> <p>Rancho Verde 24 Pacific 21</p> <p>Centennial/Corona 43 Barstow 38</p> <p>Valley View 36 Palm Springs 34</p> <p>Cajon 22 Corona 6</p> <p>Rubidoux 46 Indio 26</p> <p>Moreno Vly 41 Brawley 12</p> <p>Norco 28 Riverside Poly 7</p> <p><b>QUARTERFINALS:</b></p> <p>J.W. North 26 Rancho Verde 21</p> <p>Centennial/Corona 37 Valley View 0</p> <p>Rubidoux 48 Cajon 19</p> <p>Norco 27 Moreno Vly 19</p> <p><b>SEMIFINALS:</b></p> <p>J.W. North 29 Centennial/Corona 21</p> <p>Rubidoux 27 Norco 14</p> <p><b>FINALS:</b></p> <p>J.W. North 21 Rubidoux 18</p>	<p><b>DIVISION V</b> FIRST ROUND:</p> <p>Servite 49 Loara 20</p> <p>Santa Ana Vly 31 Irvine 14</p> <p>Corona del Mar 49 Brea Olinda 28</p> <p>Kennedy 21 Westminster 6</p> <p>El Toro 24 Savanna 14</p> <p>Villa Park 23 El Dorado 20</p> <p>Santa Margarita 42 Tustin 22</p> <p>Western 17 Canyon/A. 7</p> <p><b>QUARTERFINALS:</b></p> <p>Servite 26 Santa Ana Vly 6</p> <p>Corona del Mar 28 Kennedy 0</p> <p>El Toro 38 Villa Park 28</p> <p>Western 25 Santa Margarita 10</p> <p><b>SEMIFINALS:</b></p> <p>Servite 21 Corona del Mar 16</p> <p>El Toro 41 Western 33</p> <p><b>FINALS:</b></p> <p>El Toro 27 Servite 17</p>	<p><b>DIVISION VI</b> FIRST ROUND:</p> <p>Arroyo Bye</p> <p>Upland 13 Charter Oak 7</p> <p>Chino 37 Walnut 13</p> <p>Montclair 41 Santa Fe 11</p> <p>Etiwanda 14 California 8</p> <p>Damien 35 Rosemead 0</p> <p>Rancho Cucamonga 42 El Rancho 14</p> <p>Los Altos 43 Cerritos 9</p> <p><b>QUARTERFINALS:</b></p> <p>Upland 17 Arroyo 7</p> <p>Chino 28 Montclair 16</p> <p>Damien 41 Etiwanda 29</p> <p>Rancho Cucamonga 27 Los Altos 7</p> <p>Upland 34 Chino 0</p> <p>Rancho Cucamonga 24 Damien 21</p> <p>Upland 33 Rancho Cucamonga 13</p>	<p><b>DIVISION VII</b> FIRST ROUND:</p> <p>Covina 49 Troy 9</p> <p>Mira Costa 14 Arroyo Grande 7</p> <p>Redondo Union 29 Pacific 20</p> <p>Fullerton 34 Northview 7</p> <p>South Hills 22 Beverly Hills 15</p> <p>Los Amigos 24 Righetti 21</p> <p>Sunny Hills 24 Ganessa 14</p> <p>Lompoc 31 Rancho Alamitos 14</p> <p><b>QUARTERFINALS:</b></p> <p>Covina 33 Mira Costa 7</p> <p>Fullerton 28 Redondo Union 0</p> <p>Los Amigos 34 South Hills 7</p> <p>Lompoc 36 Sunny Hills 0</p> <p>Covina 34 Fullerton 0</p> <p>Lompoc 46 Los Amigos 6</p> <p>Covina 23 Lompoc 21</p>
<p><b>DIVISION VIII</b> FIRST ROUND:</p> <p>Sierra Vista 27 Bellflower 6</p> <p>Aliso Niguel 24 Monrovia 15</p> <p>Temescal Canyon 21 Mayfair 19</p> <p>Laguna Hills 28 La Puente 0</p> <p>Norte Vista 42 Temple City 13</p> <p>University 35 Duarte 12</p> <p>Bloomington 20 San Marino 18</p> <p>La Mirada 16 Estancia 14</p> <p><b>QUARTERFINALS:</b></p> <p>Sierra Vista 9 Aliso Niguel 7</p> <p>Temescal Canyon 14 Laguna Hills 13</p> <p>Norte Vista 26 University 7</p> <p>La Mirada 24 Bloomington 20</p> <p><b>SEMIFINALS:</b></p> <p>Temescal Canyon 28 Sierra Vista 21</p> <p>La Mirada 17 Norte Vista 7</p> <p><b>FINALS:</b></p> <p>Temescal Canyon 34 La Mirada 21</p>	<p><b>DIVISION IX</b> FIRST ROUND:</p> <p>Atascadero 59 Nordhoff 7</p> <p>Bishop Diego 28 Beaumont 7</p> <p>Moorpark 27 Paso Robles 13</p> <p>Montclair Prep 34 Harvard/Westlake 7</p> <p>Carpinteria 56 Yucca Valley 20</p> <p>St. Bonaventure 28 Cantwell-Sac.Hrt. 20</p> <p>Cabrillo 26 Calabasas 19</p> <p>Banning 35 Verbum Dei 17</p> <p><b>QUARTERFINALS:</b></p> <p>Atascadero 27 Bishop Diego 0</p> <p>Montclair Prep 27 Moorpark 17</p> <p>Carpinteria 21 St. Bonaventure 12</p> <p>Cabrillo 12 Banning 7</p> <p><b>SEMIFINALS:</b></p> <p>Atascadero 34 Montclair Prep 0</p> <p>Carpinteria 33 Cabrillo 10</p> <p><b>FINALS:</b></p> <p>Atascadero 43 Carpinteria 26</p>	<p><b>DIVISION X</b> FIRST ROUND:</p> <p>Valley Chr/C. 42 Bynes 26</p> <p>L.A. Baptist 22 Bishop Union 19</p> <p>Serrano 27 Calvary Chapel/S.A. 0</p> <p>Rosamond 34 Cathedral 32</p> <p>Paraclete 35 La Salle 14</p> <p>Big Bear 37 Village Chr. 8</p> <p>Orange Lutheran 20 Mary Star 3</p> <p>Kern Vly 32 Kilpatrick 14</p> <p><b>QUARTERFINALS:</b></p> <p>Valley Chr/C. 50 L.A. Baptist 28</p> <p>Rosamond 34 Serrano 21</p> <p>Paraclete 25 Big Bear 0</p> <p>Orange Lutheran 19 Kern Vly 8</p> <p><b>SEMIFINALS:</b></p> <p>Rosamond 45 Valley Chr/C. 10*</p> <p>Orange Lutheran 28 Paraclete 0</p> <p><b>FINALS:</b></p> <p>Valley Chr/C. 21 Orange Lutheran 17</p>	<p><b>DIVISION XI</b> FIRST ROUND:</p> <p>Morro Bay Bye</p> <p>Linfield 24 Twin Pines 22</p> <p>Mammoth 23 Calvary Chapel/D. 6</p> <p>Hamilton 40 Capistrano Vly Chr. 6</p> <p>Hesperia Chr. 8 Bloomington Chr. 6</p> <p>Templeton 48 Boron 7</p> <p>Coast Union 67 St. Margaret's 20</p> <p>Arrowhead Chr. 51 Trona 16</p> <p><b>QUARTERFINALS:</b></p> <p>Morro Bay 47 Linfield 7</p> <p>Hamilton 21 Mammoth 7</p> <p>Templeton 39 Hesperia Chr. 6</p> <p>Coast Union 42 Arrowhead Chr. 15</p> <p><b>SEMIFINALS:</b></p> <p>Morro Bay 47 Hamilton 0</p> <p>Templeton 40 Coast Union 15</p> <p><b>FINALS:</b></p> <p>Morro Bay 51 Templeton 15</p>	<p><b>EIGHT-MAN LARGE</b> FIRST ROUND:</p> <p>Brentwood 34 Lone Pine 16</p> <p>Pasadena Poly 32 Webb 12</p> <p>Chadwick 35 Campbell Hall 28</p> <p>Flintridge Prep 69 Faith Baptist 36</p> <p><b>SEMIFINALS:</b></p> <p>Brentwood 40 Pasadena Poly 24</p> <p>Flintridge Prep 51 Chadwick 11</p> <p><b>FINALS:</b></p> <p>Brentwood 41 Flintridge Prep 21</p>	<p><b>EIGHT-MAN SMALL</b> FIRST ROUND:</p> <p>Antelope Vly Chr. 53 Ambassador Chr. 8</p> <p>Desert Chr/B.D. 68 Lighthouse 22</p> <p>Riverside Chr. 46 Victor Vly Chr. 0</p> <p>Heritage Chr. 50 Christian Ctr. Acad. 0</p> <p>Rio Hondo Prep 42 Valley Chr/S.M. 14</p> <p>Maricopa 48 Pacific Chr. 38</p> <p>Calif. Lutheran 42 West Shores 12</p> <p>Pilgrim 60 Gateway Chr. 14</p> <p><b>QUARTERFINALS:</b></p> <p>Antelope Vly Chr. 44 Desert Chr/B.D. 22</p> <p>Riverside Chr. 62 Heritage Chr. 28</p> <p>Rio Hondo Prep 34 Maricopa 16</p> <p>Pilgrim 60 Calif. Lutheran 8</p> <p><b>SEMIFINALS:</b></p> <p>Antelope Vly Chr. 20 Riverside Chr 12</p> <p>Rio Hondo Prep 60 Pilgrim 16</p> <p><b>FINALS:</b></p> <p>Antelope Vly Chr. 28 Rio Hondo Prep 26</p>	

\*Valley Chr/C. advanced due to Rosamond's removal from championships.



## SOUTHERN SECTION CIF ARCO am/pm 1995 FOOTBALL CHAMPIONS

<p><b>DIVISION I</b> Bishop Amat</p> <p><b>DIVISION II</b> Hart</p> <p><b>DIVISION III</b> Diamond Bar</p> <p><b>DIVISION IV</b> J.W. North</p>	<p><b>DIVISION V</b> El Toro</p> <p><b>DIVISION VI</b> Upland</p> <p><b>DIVISION VII</b> Covina</p> <p><b>DIVISION VIII</b> Temescal Canyon</p> <p><b>DIVISION IX</b> Atascadero</p>	<p><b>DIVISION X</b> Valley Christian/ Cerritos</p> <p><b>DIVISION XI</b> Morro Bay</p> <p><b>8-MAN LARGE</b> Brentwood</p> <p><b>8-MAN SMALL</b> Antelope Valley Christian</p>
---	--	---



Photos by David Hopley.



# GOOD SPORTSMANSHIP: A MATTER OF CLASS

Submitted by Drew Potthoff, Sycamore High School, Sycamore

The scene: It's a Friday night at a high school varsity basketball game in Anytown, USA. The gym is packed with student, parents, and fans cheering and chanting wildly for their respective teams. Banners are flying and towels waving; all the fans are dressed from head to toe in their team's colors. The band is playing while the cheerleaders are encouraging the crowd to raise its voice, clap their hands, and stomp their feet with enthusiasm. The noise is at its highest decibel, and an electricity is in the air. It's a heart pounding, adrenaline pumping atmosphere. On the floor the contest has been close for three-plus quarters. The lead has changed hands six or seven times, and hearts rise and fall with every shot. The clock ticks to less than :30 seconds to play, and the home team is down by one point. As the opponent holds the ball, the crowd holds its breath. In a flash, a home town son steals the ball, dribbles, pulls up and hits the twenty-foot jump shot at the buzzer. The home town throner reacts in a joyous frenzy of cheers and high fives. The opposition sits silently stunned and disappointed. On the floor the winning players embrace each other, turn to shake hands, and share back slaps with their foe. The coaches, in turn, shake hands and congratulate each other on a fine game. The winning coach then puts his arm around the captain of the opposing team and tells him that his guys played their hearts out and can be proud of themselves. The fans file out cordially acknowledging each other on a game hard fought and well played.

Imagine the same scene but with a much different tone to the game. Fans have been chanting comments back and forth all night while ridiculing officials on calls and trying to distract players on the court. The contest is close and could go either way. One player from each team has been ejected for a shoving match and offsetting technical fouls have added to the tension. Chants of bull \_\_\_\_\_ and obscene gestures abound from the stands. Administrators and security become increasingly nervous as emotions on the floor and in the stands rise increasingly. The clock shows :30 seconds to play as a home town son steals the ball at mid-court, the opposing coach screams for a foul call as the home town boy hits the winning shot at the buzzer. Overzealous fans rush the court to embrace their local heroes. It is impossible for players to shake hands as fans jostle and bump into everyone. Official spring off the court for the sanctuary of the locker rooms. Tempers flare as players push each other and fans exchange unpleasanties. Irate fans from both teams linger outside, creating a very tense atmosphere. The visiting team is escorted to its bus by security and administrators, amid jeers from outside the gym.

This scene sounds similar to many college riots during the turmoil of the 1960's. Unfortunately, the second scene is becoming more commonplace today at high school athletic events. More frequently, what should be a positive experience for all turns ugly as a result of a lack of control and the absence of good sportsmanship.

Good sportsmanship is simply a matter of class. Either teams, schools, coaches and parents have it or they don't. There can be no gray area when it comes to being a good sport. Someone once said, "Everyone has class; unfortunately, some people have very low class." It comes to the issue of whether a school and community want to be recognized for having class at all times, only in a winning situation, or merely when it is convenient.

Do not misinterpret this article as written by someone who does not want to win every game or by someone who thinks fans should sit on passively and politely clap during a game; also, do not think this is an article to say that athletes should not play with every positive emotion and all the intensity they can manage for the entire game and to play every second to win. All teams should play to win, but that is possible while also exhibiting class. After observing and participating in many contests, however, it is obvious that there exists a distinct difference between cheering for your team and cheering against the other team.

There are far too many instances of fans jeering players these days instead of encouraging and inspiring their own athletes. Any cheer that is vulgar or derogatory should be unacceptable to fans that want to show their class. Chants of "Air ball, air ball" when someone misses a basket or reading a newspaper as lineups are announced are all harmless and should be taken in good fun. There are plenty of cheers and chants and actions that can show support and enthusiasm without bordering on the obnoxious or obscene. What ever happened to the Wave?

Players and coaches are responsible also for adding class to an event or setting the stage for ugliness. A player who gestures to the crowd to call attention to himself is simply inciting others and escalating an already potentially volatile situation. If a player does something good, the crowd will cheer. The athletes does not have to wave his hands or do a showy dance step to prove he is talented. The truly great athletes throughout history did not care about antics during a game. They just did their jobs and played the game, leaving dances and stunts to the cheerleaders. Antics on the floor or gestures to the fans is a sure way to create hatred and animosity between teams. Fans yelling and screaming at players as they run past them,

and even cases of fans spitting on players and other acts have become almost commonplace in the sports arena. We must take a good look at this conduct! Will there be any class left if this behavior continues?

Coaches also have a tremendous responsibility in good sportsmanship. As leaders of these young athletes, coaches have to set the standards of acceptance that their teams follow. The great coaches are always in control. Baiting and hounding officials, throwing chairs, or kicking the bleachers are all unacceptable, even if the coach says they are only for effect. Sometimes coaches do question official calls; mistakes are made and officials are human. Again, though, the great coaches can get an official's ear to possibly get a call to go his way later in the contest while keeping everything in perspective. The poor coaches lose it on the court or on the field and the athletes as well as fans follow. After all, it is the coach's job to lead the team; the direction he leads is a matter of class.

The purpose of this article is not to paint a picture of gloom and doom in high school athletics. On the contrary, it is to point out the enormous benefits derived from high schools athletics. The great lessons learned of hard work and effort, teamwork, and goal setting should not be overshadowed by the unsavory actin and reactions of everyone involved that seem to be occurring more often. High School Athletic Associations and governing bodies have taken steps to promote good sportsmanship. The reading of prepared statements before games, sportsmanship awards, and rule changes are all steps in the right direction. However, nothing will be accomplished unless the proper example is set. Some would say there are no role models for athletes today, and that is why this poor behavior has perpetuated itself. Perhaps this is a way of placing blame or giving up on the problem.

As a coach, fan, teacher, and father of two young children, I have begun to realize the responsibility we all have in setting the proper example, both on the field and in the bleachers. If we become aware of how our actions are perceived, we can hopefully set an example that will keep high school athletics held in the highest regard. The next time you are at a game whether playing, coaching, or observing, sit back and take a look around. Which lead will your team, school, and community take? Support your team and students to a victory with everything you have, but always remember: Good sportsmanship is simply a matter of class.

Reprinted with permission from the Illinois High School Association News.

## 1996-97 CIF-SS SPORTS CALENDAR

SPORT	PRACTICE BEGINS	FIRST SCRIMMAGE	DATE FIRST CONTEST	DATE LAST CONTEST	NUMBER OF SCRIMMAGES	NUMBER OF CONTESTS	CIF-SS PRELIMINARIES	CIF-SS FINALS
<b>FALL</b>								
B/G CROSS CTY.	Aug. 26	N/A	Sept. 12	Nov. 9	0	11	Nov. 16 State	Nov. 23 Nov. 30
FIELD HOCKEY	Aug. 26	Sept. 9	Sept. 12	Nov. 9	1	20	NO PLAYOFFS (RULE 3100.1)	N/A
FOOTBALL 8-MAN	#Aug. 26	Sept. 12	Sept. 12	Nov. 16 Nov. 9	0/1*	9/10* 8/9*	Nov. 22, 29, Dec. 6 & 7 Nov. 15, 22, 29	Dec. 13 & 14 Dec. 6
GIRLS TENNIS	Aug. 26	Sept. 9	Sept. 12	Nov. 9	1	20	Ind. League Qualifying: Nov. 11, 12, 13 Team - Nov. 14, 16, 19, 21 Ind. Sectionals - Nov. 23	Nov. 26 Dec. 5, 6
GIRLS VOLLEYBALL	Aug. 26	Sept. 9	Sept. 12	Nov. 9	1	20	Nov. 14, 16, 19, 21 State Regionals - TBA State Championship	Nov. 23 Dec. 7
WATER POLO	Aug. 26	Sept. 9	Sept. 12	Nov. 9	1	18	Div. I,III,V - Nov. 14, 19, 23 Div. II,IV,VI - Nov. 14, 20, 23	Nov. 27 Nov. 27
<b>WINTER</b>								
B/G BASKETBALL	Nov. 16	Nov. 25	Dec. 2	Feb. 15	1	20	BOYS - Feb. 18, 21, 25, 28 GIRLS - Feb. 19, 22, 26, Mar. 1 State Regionals State Finals	Mar. 7, 8 Mar. 7, 8 Mar. 11, 13, 15 Mar. 21, 22
B/G SOCCER	Nov. 16	Nov. 25	Dec. 2	Feb. 15	1	20	BOYS: Feb. 21, 25, 27, Mar. 4 GIRLS: Feb. 22, 25, 27, Mar. 4	Mar. 7, 8 Mar. 7, 8
WRESTLING	Nov. 16	N/A	Nov. 29	Feb. 15	0	18	Ind. Divisionals - Feb. 21 Team - Feb. 15 Masters - No Prelims State Championships	Feb. 22 Feb. 15 Mar. 1 Mar. 7, 8
<b>SPRING</b>								
BASEBALL	Feb. 22	Mar. 1	Mar. 7	May 17	1	20	May 23, 27, 24, June 3	June 6, 7
BADMINTON	Feb. 22	N/A	Mar. 3	May 10	0	16	Team - May 14, 20, 22, 27 Ind. - May 15	May 29 May 16
GOLF	Feb. 22	N/A	Mar. 3	May 10	0	18	Girls' Individual Ind. - No Prelims Team Regionals - May 12 CIF-SCGA	April 28 May 27 May 19 TBA
GYMNASTICS	Feb. 22	N/A	Mar. 3	May 10	0	12	NO PLAYOFFS (RULE 3100.1)	N/A
SOFTBALL	Feb. 22	Mar. 1	Mar. 7	May 17	1	20	May 23, 27, 29, June 3	June 6, 7
B/G SWIMMING AND DIVING	Feb. 22	N/A	Mar. 3	May 10	0	12	Div. I - May 15 Div. II - May 15 Div. III - May 16	May 16 May 17 May 17
BOYS TENNIS	Feb. 22	Mar. 1	Mar. 3	May 10	1	20	Ind. League Qualifying - May 12, 13, 14 Team - May 20, 22, 27, 29 Ind. Sectionals - May 24	June 4 May 30, 31
B/G TRACK & FIELD	Feb. 22	N/A	Mar. 3	May 10	0	13	May 16 & 17 Masters - No Prelims State Meet	May 24 May 30 June 6, 7
BOYS VOLLEYBALL	Feb. 22	Mar. 1	Mar. 3	May 10	1	20	May 16, 20, 23, 28	May 31

\*Scrimmage or game optional

#Conditioning - August 26, 27, 28, 1996 August 25, 26, 27, 1997.

MONDAY, MAY 19, 1997 - First day of allowable spring practice for various sports (15 days maximum per sport).

FIRST ALLOWABLE DATE FOR SUMMER COMPETITION IS SATURDAY, JUNE 21, 1997, for schools still in session.

SUMMER DEAD PERIOD: August 4 to 24, 1997 OPTIONAL (Cross-country/water polo) June 23 to July 17, 1997

Revised 1/24/96

During the dead period, weightlifting ONLY will be permitted. No running or other type of conditioning is allowed.

**SPECIAL NOTE: ALL DATES ARE TENTATIVE.**



# SOUTHERN SECTION CIF ARCO am/pm 1995 BOYS/GIRLS CROSS COUNTRY RESULTS

## DIVISION I - BOYS

### Team IAA

1. Peninsula - 53
2. Hoover - 69
3. Ayala - 76
4. Saddleback - 88
5. Huntington Beach - 89

### Individuals - IAA

1. Ryan Deane, Peninsula - 15:40
2. David Lopez, Hoover - 15:43
3. Jeremy Lyon, Hesperia - 15:47
4. Tony Trueba, Huntington Bch. - 15:48
5. Omar Orendain, San Gabriel - 15:51

### Team IA

1. Santa Ana - 46
2. Thousand Oaks - 72
3. Buena - 90
4. Hart - 92
5. Loyola - 95

### Individual IA

1. Matt Wickersham, Mater Dei - 15:32
2. Todd Disney, Thousand Oaks - 15:35
3. Matt Brown, Corona - 15:36
4. Manual Andrade, Coachella Vly - 15:42
5. Josh Carolan, Thousand Oaks - 15:58

## DIVISION II - BOYS

### Team IIAA

1. Yucaipa - 53
2. Orange - 65
3. Hemet - 67
4. Burbank - 86
5. Arlington - 89

### Individual IIAA

1. Sean Clendaniel, Yucaipa - 15:42
2. Irving Moreno, Riverside Poly - 15:43
3. Ronnie Buchanan, Righetti - 15:47
4. Alfonso Ibarra, Arlington - 15:54
5. Mark Gleason, Mission Viejo - 16:04

### Team IIA

1. Katella - 33
2. Edison - 70
3. Tustin - 73
4. Santa Margarita - 80
5. Laguna Hills - 115

### Individual IIA

1. Michael Murray, Santa Margarita - 15:46
2. Bernard Maital, Whittier - 15:53
3. Kent Roberts, Edison - 15:58
4. Juan Vanegas, Katella - 16:08
5. Daniel Smith, Tustin - 16:11

## DIVISION III - BOYS

### Team IIIAA

1. El Modena - 50
2. Newbury Park - 62
3. Barstow - 64
4. South El Monte - 94
5. Litterock - 118

### Individual IIIAA

1. Bryan Green, Litterock - 15:52
2. Ryan Amos, El Modena - 16:08
3. Mike Bilsborough, Barstow - 16:15
4. Luisano Lara, South El Monte - 16:16
5. Ryan Emeraker, El Modena - 16:17

### Team IIIA

1. Nordhoff - 23
2. St. Francis - 62
3. Corona del Mar - 64
4. Dos Pueblos - 99
5. South Hills - 123

## Individual IIIA

1. Will Bernaldo, Nordhoff - 15:34
2. Kevin Koepfer, St. Francis - 15:35
3. Andrew Van Orden, St. Francis - 15:54
4. Victor Ochoa, Nordhoff - 15:56
5. Craig Farley, Lompoc - 16:09

## DIVISION IV - BOYS

### Team IVAA

1. Morro Bay - 30
2. Oak Park - 68
3. Fillmore - 68
4. Salesian - 87
5. Beaumont - 103

### Individual IVAA

1. Isaiah Festa, Morro Bay - 15:31
2. Steve Mullen, La Salle - 16:21
3. Ryan Roberts, Oak Park - 16:43
4. Carlos Herrera, Bell-Jeff - 16:44
5. Andy Cortez, Salesian - 16:45

### Team IVA

1. Flintridge Prep - 42
2. Desert Chr/L. - 54
3. Sherman Indian - 65
4. Pasadena Poly - 74
5. Woodcrest Chr. - 134

### Individual IVA

1. Jared James, Boron - 16:31
2. Ryan Downey, St. Margaret's - 16:39
3. Jason Hoetzel, Mammoth - 16:50
4. David Robison, Flintridge Prep - 16:58
5. Clay Cole, Desert - 17:01

## DIVISION I - GIRLS

### Team IAA

1. Los Alamitos - 57
2. Ayala - 66
3. Fountain Valley - 81
4. Esperanza - 91
5. Peninsula - 93

### Individual IAA

1. Jennifer Burris, Ayala - 18:09
2. Angie Winkler, Fountain Vly - 18:13
3. Rachae McCauley, Canyon Springs-18:16
4. Breanne Schweiter, Saugus - 18:56
5. Amber Pierce, Los Alamitos - 18:58

### Team IA

1. Canyon/C.C. - 33
2. Irvine - 68
3. Thousand Oaks - 78
4. Buena - 87
5. Quartz Hill - 107

### Individual IA

1. Kim Mortensen, Thousand Oaks - 17:17
2. Andrea Neipp, Highland - 17:53
3. Jessica Corbin, Irvine - 18:19
4. Nancy Zhang, Rowland - 18:27
5. Lauren Fleshman, Canyon/C.C. - 18:30

(Continued on Page 16)



KIM MORTENSEN of Thousand Oaks, CIF-SS Division IA Champion in the finals at Mt. San Antonio College.

Photo by David Hoppey

# SOUTHERN SECTION CIF ARCO am/pm 1995 GIRLS VOLLEYBALL PLAYOFF RESULTS

## DIVISION I

**Wild Card Round:** Redondo Union def. Laguna Hills 15-8, 15-10, 11-15, 15-7; Royal def. Buena 15-2, 14-16, 15-12, 15-11; Santa Barbara def. Thousand Oaks 15-4, 15-2, 15-4; Mater Dei def. Edison 15-8, 15-5, 15-12; Irvine def. El Segundo 15-8, 15-3, 15-10.

**First Round:** Huntington Beach def. Redondo Union 15-5, 15-10, 15-7; Newport Harbor def. Royal 15-6, 15-3, 16-14; Mira Costa def. Santa Barbara 15-1, 15-3, 15-4; San Clemente def. University 15-1, 15-3, 13-15, 15-4; Mater Dei def. Westlake 15-4, 15-5, 15-3; Irvine def. Dos Pueblos 11-15, 11-15, 15-12, 15-7, 15-8; Laguna Beach def. Santa Margarita 15-9, 5-15, 10-15, 15-9, 15-12; Dan Hills def. Esperanza 15-8, 15-4, 15-10.

**Quarterfinals:** Newport Harbor def. Huntington Beach 15-13, 5-15, 8-15, 15-13, 15-6; Mira Costa def. San Clemente 13-15, 15-13, 15-6, 12-15, 16-14; Mater Dei def. Irvine 15-9, 15-2, 15-8; Laguna Beach def. Dana Hills 15-12, 9-15, 11-15, 15-10, 17-15.

**Semifinals:** Mira Costa def. Newport Harbor 15-6, 15-12, 14-16, 15-11; Laguna Beach def. Mater Dei 15-9, 15-13, 17-15.

**Final:** Mira Costa def. Laguna Beach 15-7, 16-14, 5-15, 15-5.

## DIVISION II

**First Round:** Bishop Montgomery def. Immaculate Heart 15-1, 15-7, 15-3; Peninsula def. Downey 16-14, 13-15, 15-4, 12-15, 15-6; El Modena def. Bishop Amat 15-8, 15-3, 15-9; La Habra def. Flintridge-Sacred Heart 15-8, 15-8, 15-12; Long Beach Poly def. Villa Park 15-8, 15-2, 15-2; Arcadia def. Hart 15-13, 11-15, 15-7, 15-8; Notre Dame/Sherman Oaks def. Canyon/Canyon Country 15-2, 15-9, 16-14; Notre Dame Academy def. Millikan 15-13, 15-10, 15-8; Long Beach Wilson def. North Torrance 15-10, 15-0, 15-10; Orange def. Sunny Hills 15-11, 15-11, 15-08; Gahr def. Lakewood 15-12, 18-16, 15-13; Torrance def. Sonora 15-5, 15-1, 15-2; St. Joseph/Lakewood def. Paramount 15-5, 15-3, 15-1; Marlborough def. Pasadena 15-1, 15-4, 15-5; Saugus def. Marymount 7-15, 15-9, 15-9, 15-5; Harvard-Westlake def. Crescenta Valley 15-2, 15-6, 15-2.

**Second Round:** Bishop Montgomery def. Peninsula 15-7, 15-1, 15-7; La Habra def. El Modena 15-11, 15-1, 12-15, 15-8; Long Beach Poly def. Arcadia 15-8, 15-4, 15-0; Notre Dame Academy def. Notre Dame/Sherman Oaks 15-13, 15-13, 15-6; Long Beach Wilson def. Orange 15-12, 15-11, 15-9; Torrance def. Gahr 15-12, 19-17, 10-15, 15-7; St. Joseph/Lakewood def. Marlborough 15-9, 13-15, 15-0, 16-18, 15-11; Harvard-Westlake def. Saugus 15-6, 15-0, 15-6.

**Quarterfinals:** Bishop Montgomery def. La Habra 15-7, 15-11, 15-7; Notre Dame Academy def. Long Beach Poly 11-15, 15-13, 10-15, 16-14, 15-13; Long Beach Wilson def. Torrance 15-9, 15-11, 15-12; Harvard-Westlake def. St. Joseph/Lakewood 15-7, 15-7, 15-4.

**Semifinals:** Bishop Montgomery def. Notre Dame Academy 15-3, 15-7, 15-12; Harvard-Westlake def. Long Beach Wilson 15-6, 15-4, 15-8.

**Final:** Harvard-Westlake def. Bishop Montgomery 15-11, 12-15, 15-5, 16-14.

## DIVISION III

**Wild Card Round:** Claremont/Claremont def. J.W. North 15-13, 3-15, 15-12, 2-15, 15-12; Rancho

Cucamonga def. La Sierra 15-1, 15-4, 15-13; Hesperia def. Canyon Springs 15-9, 12-15, 14-16, 15-13, 15-13; Los Altos def. Palmdale 15-5, 15-4, 15-6; San Luis Obispo def. Walnut 15-6, 15-6, 12-15, 15-9; San Marino def. Alhambra 9-15, 15-2, 15-10, 15-6; Katella def. Diamond Bar 15-13, 15-5, 15-3; Garden Grove def. Bell Gardens 10-15, 7-15, 15-7, 15-7, 15-4; Santa Fe def. Nogales 12-15, 16-14, 15-2, 15-4; Ontario def. California 15-4, 15-11, 12-15, 15-11.

**First Round:** Redlands def. Claremont/Claremont 15-6, 15-6, 15-3; Rancho Cucamonga def. Burroughs/Ridgecrest 15-9, 15-11, 13-15, 10-15, 15-13; Ayala def. Hesperia 15-6, 17-19, 15-12, 15-7; Kennedy def. Bolsa Grande 15-3, 15-12, 15-6; San Gabriel def. Arroyo Grande 15-7, 15-4, 5-15, 15-13; La Serna def. Los Altos 15-8, 15-0, 15-6; Upland def. Yucaipa 15-3, 15-0, 9-15, 15-0; La Canada def. San Luis Obispo 15-6,

8-15, 16-14, 15-13; Righetti def. San Marino 15-9, 12-15, 15-13, 15-9; Temple City def. St. Lucy's 14-16, 15-11, 15-13, 15-10; Alta Loma def. Katella 15-12, 14-16, 15-13, 15-12; Wilson/Hacienda Heights def. Highland 15-3, 15-4, 15-3; Cypress def. Garden Grove 15-6, 15-3, 15-5; Santa Fe def. Pacifica 15-11, 15-7, 15-6; Riverside Poly def. Apple Valley 10-15, 15-11, 15-10, 15-12; Rim of the World def. Ontario 15-1, 15-2, 15-2.

**Second Round:** Redlands def. Rancho Cucamonga 15-6, 15-6, 11-15, 12-15, 15-6; Kennedy def. Ayala 15-13, 15-5, 15-6; San Gabriel def. La Serna 15-11, 15-3, 15-10; Upland def. La Canada 15-9, 15-5, 9-15, 15-12; Righetti def. Temple City 15-12, 7-15, 15-4, 15-8; Wilson/Hacienda Heights def. Alta Loma 12-15, 15-4, 4-15, 15-8, 15-9; Cypress def. Santa Fe 15-12, 15-6, 15-6; Rim of the World def. Riverside Poly 10-15, 15-1, 15-6, 15-10.

**Quarterfinals:** Redlands def. Kennedy 15-11, 15-8, 15-17, 15-3; San Gabriel def. Upland 15-9, 15-8, 15-6; Wilson/Hacienda Heights def. Righetti 15-10, 13-15, 15-7, 15-17, 15-9; Rim of the World def. Cypress 4-15, 15-13, 15-9, 15-5.

**Semifinals:** Redlands def. San Gabriel 15-10, 14-16, 15-9, 6-15, 15-4; Rim of the World def. Wilson/Hacienda Heights 15-12, 8-15, 15-13, 11-15, 15-7.

**Final:** Redlands def. Rim of the World 19-17, 15-13, 15-13.

## DIVISION IV

**Wild Card Round:** Centennial/Corona def. Tustin 15-9, 15-11, 13-15, 15-11; San Geronio def. Palm Desert 15-6, 15-5, 15-3; Cathedral City def. Palo Verde 15-4, 8-15, 15-10, 15-5; Atascadero def. Nordhoff 10-15, 9-15, 16-14, 15-9, 15-1; Brea Olinda def. Valley View 15-5, 15-10, 16-14; Whittier Christian def. Artesia 15-1, 15-9, 15-9; St. Bonaventure def. El Monte 15-10, 15-7, 15-0.

**First Round:** Calvary Chapel/Santa Ana def. Centennial/Corona 15-5, 15-8, 15-10; Valencia/Placencia def. San Geronio 15-7, 15-9, 17-15; Murrieta Valley def. Palm Springs 15-12, 15-9, 15-13; Brawley def. A.B. Miller 15-8, 15-11, 16-14; Santa Ynez def. Moorpark 15-4, 15-6, 15-6; Cerritos def. Bishop Diego 15-9, 15-4, 15-5; Temecula Valley def. Elsinore 14-16, 15-12, 15-11, 12-15, 15-6; Rosary def. Norwalk 15-1, 15-5, 17-15; Orange Lutheran def. Western 15-2, 15-12, 15-7; Ocean View def. Rosemead 15-8, 15-9, 15-4; Hemet def. Central Union 15-10, 15-10, 15-9; Cajon def. Cathedral City 15-4, 15-4, 15-0; La Reina def. Atascadero 15-9, 15-4, 15-12; Glenn def. Brea Olinda 15-0, 9-15, 15-12, 15-13; Whittier Christian def. Santa Clara 15-7, 15-13, 16-14; Paso Robles def. St. Bonaventure 15-3, 15-1, 17-15.

**Second Round:** Calvary Chapel/Santa Ana def. Valencia/Placencia 15-8, 15-2, 15-9; Brawley def. Murrieta Valley 16-14, 16-14, 15-12; Cerritos def. Santa Ynez 15-6, 15-9, 15-6; Temecula Valley def. Rosary 15-8, 15-9, 10-15, 10-15, 16-14; Ocean View def. Orange Lutheran 15-4, 15-12, 13-15, 15-7; Hemet def. Cajon 15-8, 15-9, 13-15, 15-12; La Reina def. Glenn 15-3, 15-12, 15-5; Paso Robles def. Whittier Christian 15-9, 15-9, 12-15, 15-3.

**Quarterfinals:** Brawley def. Calvary Chapel/Santa Ana 5-15, 15-13, 7-15, 15-11, 15-8; Cerritos def. Temecula Valley 9-15, 15-7, 15-10, 15-11;

(Continued on page 16.)

**SOUTHERN SECTION  
CIF ARCO am/pm  
1995 GIRLS VOLLEYBALL  
CHAMPIONS**

**DIVISION I  
Mira Costa**

**DIVISION II  
Harvard-Westlake**

**DIVISION III  
Redlands**

**DIVISION IV  
Paso Robles**

**DIVISION V  
Mission Prep**

**DIVISION VI  
Hesperia Christian**



# GIRLS VOLLEYBALL RESULTS

(Continued from page 15)

Ocean View def. Hemet 9-15, 15-10, 15-5, 15-12; Paso Robles def. La Reina 8-15, 15-11, 16-14, 16-14.

**Semifinals:** Cerritos def. Brawley 17-15, 15-3, 15-8; Paso Robles def. Ocean View 15-4, 15-11, 16-14.

**Final:** Paso Robles def. Cerritos 15-3, 15-11, 6-15, 15-5.

## DIVISION V

**Wild Card Round:** Chadwick def. San Gabriel Mission 15-1, 15-5, 15-5; St. Margaret's def. Cantwell-Sacred Heart 15-10, 15-5, 15-1; Azusa def. Yucca Valley 15-9, 15-1, 8-15, 15-10; Paraclete def. Montclair Prep 15-10, 9-15, 12-15, 15-7, 16-14; San Dimas def. Aquinas 15-12, 15-12, 15-11; Maranatha def. Crossroads 15-8, 15-11, 15-13.

**First Round:** Brentwood def. Chadwick 15-13, 15-12, 13-15, 15-1; Village Christian def. Desert 15-13, 15-5, 15-6; Covina def. Gladstone 15-7, 15-11, 15-7; Capistrano Valley Christian def. St. Anthony 15-6, 15-9, 15-8; St. Margaret's def. Pius X-St. Matthias 15-8, 15-4, 15-3; Beaumont def. Alverno 15-11, 10-15, 13-15, 15-9, 16-14; Big Bear def. Azusa 15-9, 15-4, 15-8; Mayfield def. Morro Bay 15-9, 15-0, 15-13; Los Angeles Baptist def. Paraclete 15-10, 16-14, 15-7; Mojave def. Lucerne Valley 15-9, 15-5, 15-4; Whitney def. Bishop Conaty-Loretto 15-6, 15-0, 15-5; Connelly def. La Puente 15-13, 15-9, 15-11; South Hills def. San Dimas 15-10, 15-7, 15-10; Ramona Convent def. West Valley 15-9, 9-15, 15-10, 15-11; Flintridge Prep def. Bell-Jeff 16-14, 9-15, 10-15, 15-10, 15-13; Mission Prep def. Maranatha 15-13, 2-15, 7-15, 15-11, 15-8.

**Second Round:** Brentwood def. Village Christian 14-16, 12-15, 15-8, 15-12, 15-11; Capistrano Valley Christian def. Covina 15-2, 10-15, 15-13, 15-11; St. Margaret's def. Beaumont 15-9, 15-9, 3-15, 15-10; Mayfield def. Big Bear 15-5, 15-12, 15-12; Los Angeles Baptist def. Mojave 11-15, 15-10, 15-9, 13-15, 15-9; Whitney def. Connelly 15-7, 15-9, 3-15, 15-2; South Hills def. Ramona Convent 15-6, 15-13, 15-13; Mission Prep def. Flintridge Prep 15-2, 15-8, 13-15, 15-10.

**Quarterfinals:** Brentwood def. Capistrano Valley Christian 15-13, 15-6, 15-9; St. Margaret's def. Mayfield 15-17, 15-13, 10-15, 17-15, 15-10; Los Angeles Baptist def. Whitney 15-9, 15-9, 13-15, 15-10; Mission Prep def. South Hills 15-12, 15-11, 15-7.

**Semifinals:** Brentwood def. St. Margaret's 15-11, 15-10, 16-14; Mission Prep def. Los Angeles Baptist 15-13, 15-10, 12-15, 16-14.

**Final:** Mission Prep def. Brentwood 15-11, 15-8, 15-9.

## DIVISION VI

**Wild Card Round:** Ribet Academy def. Price 15-11, 15-7, 15-9; Cornerstone Christian def. Cuyama Valley 15-13, 15-11, 17-15; Arrowhead Christian def. Ambassador Christian 17-15, 15-13, 14-16, 15-13; Linfield def. Desert Christian/Bermuda Dunes 15-8, 15-10, 15-4; Immanuel Christian def. Santa Clarita Christian 12-15, 18-16, 15-3, 15-11; LaVerne Lutheran def. Rolling Hills Prep 15-12, 15-9, 15-4; Holy Martyrs def. Glendale Adventist 15-10, 10-15, 15-8, 15-7; Boron def. Bethel Christian/Lancaster 16-18, 15-8, 14-16, 15-11, 15-7; La Sierra Academy def. California Lutheran 15-4, 15-0, 15-6.

**First Round:** Windward def. Ribet Academy 15-1, 15-12, 15-4; Calvary Chapel/Downey def. Southern California Christian 8-15, 16-14, 18-16, 15-17, 15-7; Valley Christian/Santa Maria def. AGBU Forfeit; Pilgrim def. Cate 3-15, 15-12, 15-8, 15-11; Coronstone Christian def. Imperial 15-0, 15-4, 10-15, 15-11; Arrowhead Christian def. Calvary Baptist 15-11, 15-4, 15-1; Linfield def. Victor Valley Christian 15-12, 15-9, 15-4; Mammoth def. Immanuel Christian 15-5, 15-2, 15-3; Thacher def. Maricopa 15-5, 15-6, 15-10; LaVerne Lutheran def. Southwestern Academy 15-13, 15-6, 11-15, 15-12; Pioneer Baptist def. Holy Martyrs 15-1, 15-13, 10-15, 15-7; Viewpoint def. Hillcrest Christian 15-12, 15-5, 15-11; Boron def. Providence 15-10, 15-11, 6-15, 9-15, 15-8; Baptist Christian/Hemet def. La Sierra Academy 7-15, 15-10, 15-12, 15-13; Baker def. Big Pine 10-15, 15-1, 15-6, 16-14; Hesperia Christian def. Calvary Chapel/Redlands 15-3, 15-4, 15-1.

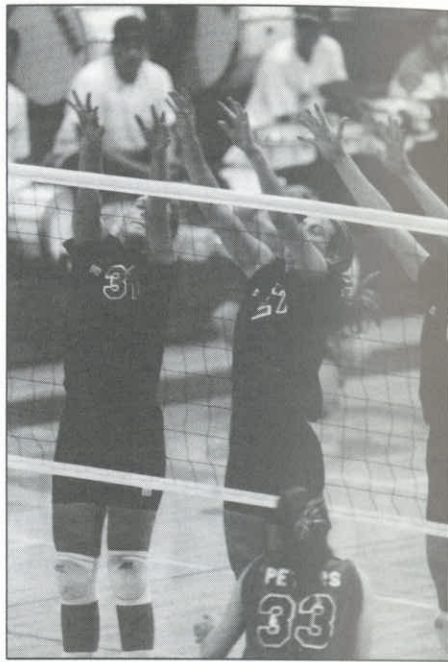
**Second Round:** Windward def. Calvary Chapel/Downey 15-6, 15-8, 15-2; Pilgrim def. Valley Christian/Santa Maria 15-13, 15-17, 15-6, 15-5; Cornerstone Christian def. Arrowhead Christian 18-16, 15-4, 15-10; Mammoth def. Linfield 16-14, 16-14, 15-13; Thacher def. LaVerne Lutheran 15-13, 15-5, 15-5; Pioneer Baptist def. Viewpoint 15-3, 11-15, 15-7, 7-15, 15-9; Boron def. Baptist Christian/Hemet 15-12, 5-15, 10-15, 15-8, 15-7; Hesperia Christian def. Baker 15-6, 15-10, 15-1.

**Quarterfinals:** Windward def. Pilgrim 15-5, 15-6, 15-9; Cornerstone Christian def. Mammoth 15-13, 15-5, 17-15; Thacher def. Pioneer Baptist 15-

7, 15-13, 15-11; Hesperia Christian def. Boron 15-5, 15-6, 15-11.

**Semifinals:** Windward def. Cornerstone Christian 15-6, 15-11, 15-10; Hesperia Christian def. Thacher 15-7, 11-15, 19-17, 15-1.

**Final:** Hesperia Christian def. Windward 15-11, 15-8, 4-15, 15-10.



# CROSS COUNTRY RESULTS

(Continued from page 14)

## DIVISION II - GIRLS

### Team IIAA

1. Yucaipa - 22
2. Dana Hills - 60
3. University - 68
4. Trabuco Hills - 93
5. Agoura - 130

### Individual IIAA

1. Allyson Marquand, University - 17:38
2. Kimi Welsh, Yucaipa - 17:56
3. Mindy Brown, Yucaipa - 18:40
4. Jennifer Spahr, Huntington Bch - 18:52
5. Nickie Whiteside, Yucaipa - 18:57

### Team IIA

1. Santa Margarita - 42
2. Foothill - 45
3. St. Lucy's - 73
4. Villa Park - 96
5. West Tarrant - 102

### Individual IIA

1. Annie Ebiner, St. Lucy's - 17:25
2. Katie Nuanes, Santa Margarita - 18:20
3. Mandy Schwecheri, Laguna Hills - 19:16
4. Dani Rope, Santa Margarita - 19:38
5. Nici Desmond, Foothill - 19:41

## DIVISION III - GIRLS

### Team IIIAA

1. El Modena - 29
2. Newport Harbor - 62
3. Moorpark - 96
4. Atascadero - 98
5. South El Monte - 102

### Individual IIIAA

1. Heather Garritson, Buena Park - 18:42
2. Jessica Dahlberg, El Modena - 19:14
3. Leslie Burton, El Modena - 19:21
4. Alicia McFall, Newport Harbor - 19:32
5. Katie Kennedy, El Modena - 19:45

### Team IIIA

1. Nordhoff - 22
2. Temescal Canyon - 49
3. Corona del Mar - 84
4. Dos Pueblos - 103
5. Alemany - 114

### Individual IIIA

1. Elaine Canchola, Nordhoff - 17:35
2. Shelby Horgan, Temescal Canyon - 18:26
3. Terrah Chapin, Nordhoff - 18:51
4. Sunny Shaffer, Temescal Canyon - 19:02
5. Beth Zacher, Nordhoff - 19:25

## DIVISION IV - GIRLS

### Team IVAA

1. Louisville - 28
2. Morro Bay - 57
3. Orange Lutheran - 76
4. Flintridge-Sacred Heart - 94
5. La Reina - 117

### Individual IVAA

1. Shaluinn Fullove, Louisville - 18:31
2. Melissa MacPherson, FlintridgeSacHrt-19:03
3. Kristin Grincy, Orange Lutheran - 19:15
4. Lindsay Buwalda, Laguna Beach - 19:16
5. Ashley Caro, Louisville - 19:21

### Team IVA

1. Desert Christian - 37
2. Pasadena Poly - 55
3. Ontario Christian - 84
4. Calvary Chapel/D. - 100
5. Thacher - 102

### Individual IVA

1. Michelle Curtis, Desert Chr. - 20:27
2. Katie Newhall, Pasadena Poly - 20:58
3. Wendy Crumrine, Flintridge Prep - 21:13
4. Sarah Shonnard, Vivian Webb - 21:40
5. Emily Sopp, Chadwick - 21:52

# SOUTHERN SECTION CIF ARCO am/pm 1995 WATER POLO PLAYOFF RESULTS

## SOUTHERN SECTION CIF ARCO am/pm 1995 WATER POLO CHAMPIONS

DIVISION I  
Foothill

DIVISION II  
Costa Mesa

DIVISION III  
Bell Gardens

DIVISION IV  
Royal

DIVISION V  
Jurupa Valley

DIVISION VI  
Rowland

## DIVISION I

**First Round:** Foothill def. Millikan 22-2; Harvard-Westlake def. Corona del Mar 11-6; Capistrano Valley def. Long Beach Poly 16-8; El Toro def. Canyon/Anaheim 17-8; Villa Park def. Loyola 13-7; Newport Harbor def. Mission Viejo 16-5; San Clemente def. Santa Margarita 19-5; Long Beach Wilson def. Crespi 23-3.

**Quarterfinals:** Foothill def. Harvard-Westlake 15-7; El Toro def. Capistrano Valley 13-7; Villa Park def. Newport Harbor 8-7; Long Beach Wilson def. San Clemente 13-8.

**Semifinals:** Foothill def. El Toro 6-5, Villa Park def. Long Beach Wilson 8-6.

**Final:** Foothill def. Villa Park 8-7.

## DIVISION II

**Wild Card Round:** Laguna Beach def. Saddleback 20-14; Los Alamitos def. Cypress 23-9.

**First Round:** Costa Mesa def. Buena Park 21-6; El Dorado def. Laguna Beach 7-4; Tustin def. Garden Grove 21-5; Esperanza def. Fullerton 17-11; Marina def. Katella 13-5; Estancia def. La Habra 10-9; Los Alamitos def. Pacifica 17-3; Servite def. La Quinta 26-14.

**Quarterfinals:** Costa Mesa def. El Dorado 13-7; Esperanza def. Tustin 13-9; Marina def. Estancia 16-3; Servite def. Los Alamitos 10-9.

**Semifinals:** Costa Mesa def. Esperanza 9-6; Marina def. Servite 14-13 (OT).

**Final:** Costa Mesa def. Marina 12-11.

## DIVISION III

**First Round:** Bell Gardens def. Temple City 45-2; La Serna def. La Canada 16-9; Crescenta Valley def. Santa Monica 17-9; Mira Costa def. El Rancho 13-1; Peninsula def. Muir 17-9; Burroughs/Burbank def. Beverly Hills 7-5; South Pasadena def. Glendale 11-9; Whittier def. Montebello 21-5.

**Quarterfinals:** Bell Gardens def. La Serna 15-6; Mira Costa def. Crescenta Valley 11-10 (OT); Burroughs/Burbank def. Peninsula 12-6; Whittier def. South Pasadena 19-6.

**Semifinals:** Bell Gardens def. Mira Costa 12-11; Whittier def. Burroughs/Burbank 15-8.

**Final:** Bell Gardens def. Whittier 16-11.

## DIVISION IV

**First Round:** Royal def. Calabasas 21-2; Dos

Pueblos def. San Luis Obispo 16-7; Atascadero def. Lompoc 14-6; Santa Barbara def. Milken Community 18-7; San Marcos def. Cabrillo 18-8; Santa Ynez def. Newbury Park 22-11; Buena def. Malibu 9-8; Righetti def. Agoura 21-12.

**Quarterfinals:** Royal def. Dos Pueblos 15-7; Santa Barbara def. Atascadero 9-7; San Marcos def. Santa Ynez 18-10; Righetti def. Buena 10-9.

**Semifinals:** Royal def. Santa Barbara 11-9; San Marcos def. Righetti 14-9.

**Final:** Royal def. San Marcos 11-8.

## DIVISION V

**Wild Card Round:** J.W. North def. San Geronio 22-8.

**First Round:** San Bernardino def. Damien 28-7; Palm Desert def. Fontana 11-9; Hemet def. Rancho Cucamonga 12-10; Arlington def. Claremont/Claremont 25-6; Riverside Poly def. Palm Springs 21-6; Redlands def. Indio 18-6; J.W. North def. Upland 28-17; Jurupa Valley def. Alta Loma 18-2.

**Quarterfinals:** San Bernardino def. Palm Desert 18-12; Arlington def. Hemet 18-4; Riverside Poly def. Redlands 14-4; Jurupa Valley def. J.W. North 11-4.

**Semifinals:** Arlington def. San Bernardino 12-5; Jurupa Valley def. Riverside Poly 9-7.

**Final:** Jurupa Valley def. Arlington 9-7.

## DIVISION VI

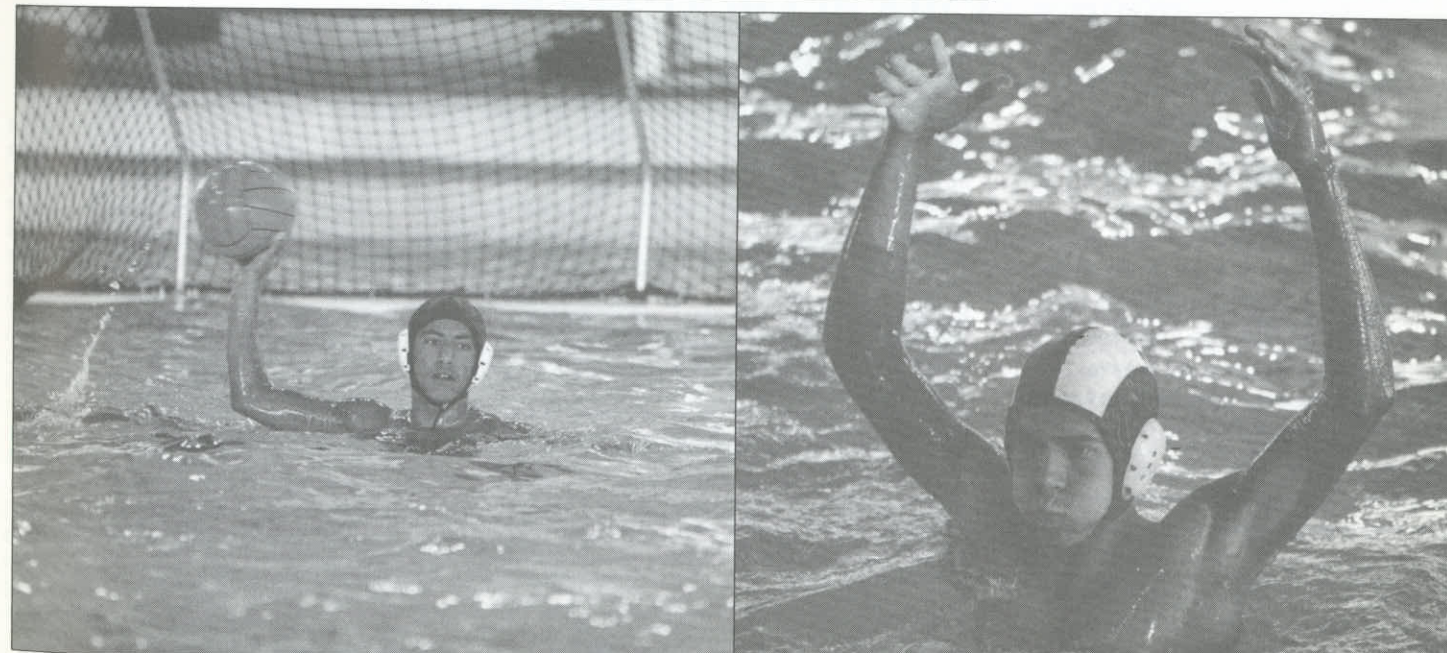
**Wild Card Round:** Walnut def. Webb 17-3; West Covina def. Sierra Vista 35-5; Whitney def. Western 10-9 (OT).

**First Round:** Rowland def. Downey 24-5; Los Altos def. CAMS 16-7; Bonita def. Warren 21-6; Brea Olinda def. Walnut 21-6; Chadwick def. West Covina 19-10; Wilson/Hacienda Heights def. Magnolia 16-6; Cerritos def. Whittier 21-9; Ayala def. La Puente 24-5.

**Quarterfinals:** Rowland def. Los Altos 15-7; Bonita def. Brea Olinda 11-10; Chadwick def. Wilson/Hacienda Heights 13-11; Ayala def. Cerritos 19-11.

**Semifinals:** Rowland def. Bonita 9-6; Ayala def. Chadwick 18-0.

**Final:** Rowland def. Ayala 11-6.



Photos by Dennis Hanley



## COUNCIL MINUTES

(Continued from page 2)

naires have been recently mailed to all member schools.

**5. COMMISSIONER'S REPORT** -- Dean Crowley, Commissioner, discussed AB1655, Officials' as Independent Contractors which was recently signed by the Governor, an assault on a game official, concerns regarding sportsmanship and possible revisions of the fighting rule. In addition, he complimented the L.A. Times Downtown Edition on their new prep section.

**6. TREASURER'S REPORT** -- Marge Godfrey, Treasurer reviewed the final 1994-95 CIF-SS Budget. Also, she complimented Commissioner Crowley and Office Staff on their competent fiscal management and leadership. In addition, Ms. Godfrey announced that uncommitted reserves in the amount of \$98,500 would be dispersed to the leagues.

**7. STATE CIF/SOUTHERN SECTION MARKETING REPORT** -- Dr. Gary Smidderks, Past President reviewed the current developments as they relate to the State Marketing Program. Chris Thomas, Director of Sports Marketing, reported on a very productive summer for the Southern Section Marketing Program.

**8. WEIGHTED VOTING** -- Dr. Gary Smidderks reported the Weighted Voting Committee will be re-convened to evaluate the previous report and return with a recommendation at the January Council meeting.

**9. PUBLIC HEARING SESSION** -- Paul Kostopoulos, Coordinator of the Desert Mountain League spoke on the Football Playoff Groupings and the placement of Morro Bay in Division XI. There being no further business to come before the Council, the meeting was adjourned at 11:20 a.m.

Submitted by:

KAREN HELLYER  
ASSISTANT COMMISSIONER

Approved by:

DEAN CROWLEY  
COMMISSIONER OF ATHLETICS

## REVISED MINUTES OF THE EXECUTIVE COMMITTEE June 28, 1995

The following is the revised wording that appear in the June 28, 1995 Executive Committee Minutes printed in the Fall, 1995 CIF-SS Bulletin.

**5. GIRLS' ATHLETIC DIRECTOR UPDATE** -- Donna Gunstream, Girls' Athletic Director Representative, reviewed her efforts in contractin representatives of C.A.H.P.E.R. and C.T.A. regarding their position pertaining to the renewal of AB1175 and the development of a new Athletic Directors' Association with the first meeting to be held following the October 19, 1995, Council Meeting.

## COMMISSIONER'S CORNER

(Continued from page 3)

a friendly spirit towards athletic opponents and game officials when things are going well. The test of sportsmanship and self-discipline comes when the decisions and "breaks" are going the other way. If such positive attitudes are exhibited by participants and spectators alike, athletics are at their highest level.

The principal of the school, of course, is charged with the prime responsibility for the health and safety of his student body. Assisting him with various aspects of crowd control management for interscholastic athletics will be, among others, assistant principals, athletic directors, coaches, and other members of the faculty.

Every school has its own emotional climate, and the crowd management problem-solving of individual schools should reflect this. Basically speaking, though, three general areas should be covered:

- 1. Preparation:** Indoctrination of student body to act in sportsmanlike manner at athletic events.
- 2. Prevention:** Assignment of adequate supervisory and law enforcement personnel.
- 3. Reaction:** Prompt and appropriate reaction by cheerleaders, supervisors, or law enforcement personnel to objectionable crowd behavior.

Interscholastic athletics are extra curricular activities provided for the athletes' benefit, primarily -- not the student body or the community, and we all share a common responsibility to protect our athletes and our athletic programs. One of the means to this end is proper crowd management.

## MARKETING UPDATE

(Continued from page 3)

membership dues and the high cost of conducting championship events. In these hard economic times, companies such as this one show a sincere desire to provide for the youth for the benefit of tomorrow."

Frontier joins statewide sponsors ARCO *am/pm*, Herff Jones, along with section sponsors Conlin Bros. Sporting Goods, Daniel Freeman Hospitals, Gatorade, Pacific Bell Smart Yellow Pages, TLC Sportswear, and Wilson Sporting Goods in support of all CIF-SS activities.

## "THANKS COACH"

(Continued from page 2)

church. It was composed of coaches, teachers, officials, parents, ex-wrestlers and "his team."

As I sat back and reflected about all the things Wally had done for us and realized how much we would all miss him, it occurred to me that other schools have their own version of Coach Curtis. In the ear when we hear so much about coaches who splice game films, who knowingly play ineligible athletes, who are ejected from contests, who condone and even promote trash talk and racial slurs, and who blame everyone from officials to their own kids for losses, I believe it is time we recognized the Wally Curtises. I know there are a lot more of them than the critics would like us to believe. I would like to ask each of you to identify those coaches on your staff or that coach who was a major influence in your life. You don't have to say or write a lot. "THANKS COACH" would probably do.



## SOUTHERN SECTION CIF ARCO *am/pm* 1995 GIRLS TEAM TENNIS PLAYOFF RESULTS

### DIVISION I

**First Round:** Peninsula def. Capistrano Valley 16-2; Newport Harbor def. Thousand Oaks 14-4; Dana Hills def. Agoura 16-2; Woodbridge def. Dos Pueblos 15-3; Corona del Mar def. San Marcos 9-9 (75-62); Mater Dei def. Santa Monica 13-5; Santa Margarita def. Westlake 10-8; Santa Barbara def. Torrance 17-1.

**Quarterfinals:** Peninsula def. Newport Harbor 16-2; Woodbridge def. Dana Hills 11-7; Corona del Mar def. Mater Dei 14-4; Santa Barbara def. Santa Margarita 13-5.

**Semifinals:** Peninsula def. Woodbridge 13-5; Santa Barbara def. Corona del Mar 10-8.

**Final:** Peninsula def. Santa Barbara 14-4.

### DIVISION II

**First Round:** Laguna Beach, Bye; Canyon/Anaheim def. Fontana 17-1; Crescenta Valley def. Louisville 15-3; Los Alamitos def. Mira Costa 18-0; Beverly Hills def. Huntington Beach 13-5; Marymount def. Chaminade 11-7; Estancia def. Ayala 15-3; Redlands def. El Modena 13-5; Calabasas, Bye; Marlborough def. Flintridge - Sacred Heart 9-9 (77-73); Arcadia def. South Torrance 9-9 (84-77); Harvard-Westlake def. Rowland 17-1; Diamond Bar def. Glendale 15-3; Edison def. Laguna Hills 10-8; University def. Apple Valley 12-6; Villa Park, Bye.

**Second Round:** Laguna Beach def. Canyon/Anaheim 12-6; Los Alamitos def. Crescenta Valley 16-2; Beverly Hills def. Marymount 12-6; Redlands def. Estancia 13-5; Calabasas def. Marlborough 10-8; Harvard-Westlake def. Arcadia 13-5; Diamond Bar def. Edison 11-7; Villa Park def. University 11-7.

**Quarterfinals:** Laguna Beach def. Los Alamitos 11-7; Redlands def. Beverly Hills 12-6; Calabasas def. Harvard-Westlake 11-7; Villa Park def. Diamond Bar 9-9 (75-67).

**Semifinals:** Laguna Beach def. Redlands 9-9 (88-78); Villa Park def. Calabasas 9-9 (71-70).

**Final:** Villa Park def. Laguna Beach 9-9 (71-70)

### DIVISION III

**Wild Card Round:** Upland def. Charter Oak 14-

4; Mayfield def. Hart 12-6; Troy def. Lynwood 11-7; Rubidoux def. Murrieta Valley 12-6; Temple City def. Schurr 11-78; Valley View def. Arlington 11-7; Kennedy def. Tustin 13-5.

**First Round:** El Dorado def. Upland 15-3; Sunny Hills def. Ocean View 11-7; Temecula Valley def. Riverside Poly 10-8; Claremont/Claremont def. Corona 10-8; Mayfield def. Keppel 13-5; La Canada def. Troy 14-4; Burroughs/Burbank def. Warren 15-3; Webb def. Wilson/Hacienda Heights 17-1; Hemet def. Rubidoux 18-0; San Marino def. St. Lucy's 9-9 (81-69); Temple City def. Walnut 12-6; Rosary def. Loara 16-2; Valley View def. Centennial/Corona 10-8; Sonora def. Paramount 10-8; Alhambra def. Burbank 10-8; Pasadena Poly def. Kennedy 18-0.

**Second Round:** El Dorado def. Sunny Hills 18-0; Temecula Valley def. Claremont/Claremont 13-5; La Canada def. Mayfield 9-9 (72-70); Webb def. Burroughs/Burbank 12-6; Hemet def. San Marino 13-5; Rosary def. Temple City 17-1; Valley View def. Sonora 10-8; Pasadena Poly def. Alhambra 17-1.

**Quarterfinals:** El Dorado def. Temecula Valley 14-4; Webb def. La Canada 12-6; Hemet def. Rosary 10-8; Pasadena Poly def. Valley View 12-6.

**Semifinals:** El Dorado def. Webb 13-5; Hemet def. Pasadena Poly 9-9 (76-70).

**Final:** El Dorado def. Hemet 9-9 (87-74).

### DIVISION IV

**Wild Card Round:** Arroyo def. Pacific 14-4; La Quinta/Westminster def. Artesia 17-1; Valencia/Placentia def. Lakewood 14-4; St. Joseph/Santa Maria def. Buckley 9-9 (71-69); Central Union def. Palm Springs 9-9 (77-70); Lompoc def. Santa Fe 17-1.

**First Round:** Palm Desert def. Arroyo 17-1; Brawley def. Colton 10-8; Savanna def. Bolsa Grande 10-8; Long Beach Wilson def. La Serna 12-6; San Luis Obispo def. Paso Robles 15-3; Rosemead def. Bellflower 11-7; Quartz Hill def. La Quinta/Westminster 11-7; Brentwood def. Valencia/Placentia 16-2; Righetti def. St. Joseph/Santa

Maria 10-8; Whittier def. Burroughs/Ridgecrest 12-6; Garden Grove def. Brea/Olinda 14-4; Cerritos def. La Quinta/La Quinta 13-5; Mayfair def. Whitney 10-8; San Geronio def. Central Union 11-7; Cate Def. Long Beach Poly 14-4; Santa Ynez def. Lompoc 12-6.

**Second Round:** Palm Desert def. Brawley 17-1; Long Beach Wilson def. Savanna 11-7; San Luis Obispo def. Rosemead 12-6; Brentwood def. Quartz Hill 17-1; Righetti def. Whittier 10-8; Cerritos def. Garden Grove 11-7; San Geronio def. Mayfair 11-7; Santa Ynez def. Cate 13-5.

**Quarterfinals:** Palm Desert def. Long Beach Wilson 15-3; Brentwood def. San Luis Obispo 13-5; Righetti def. Cerritos 13-5; Santa Ynez def. San Geronio 13-5.

**Semifinals:** Brentwood def. Palm Desert 11-7; Santa Ynez def. Righetti 11-7.

**Final:** Brentwood def. Santa Ynez 13-5.

### DIVISION V

**First Round:** South Hills, Bye; Carpinteria def. Brethren Christian 11-7; Montclair def. Bonita 10-8; Nordhoff def. Gladstone 15-3; Connelly, Bye; West Valley def. Norte Vista 9-9 (77-76); Serrano def. Desert 10-8; Rim of the World, Bye; La Reina, Bye; Northview def. Sierra Vista 16-2; Big Bear def. Azusa 14-4; Beaumont def. Etiwanda 15-3; Yucaipa def. Notre Dame/Riverside 18-0; Bishop Union def. Sultana 15-3; St. Bonaventure def. Valley Christian/Cerritos 12-6; Rancho Cucamonga, Bye.

**Second Round:** South Hills def. Carpinteria 15-3; Nordhoff def. Montclair 15-3; West Valley def. Connelly 10-8; Rim of the World def. Serrano 17-1; La Reina def. Northview 16-2; Beaumont def. Big Bear 16-2; Yucaipa def. Bishop Union 14-4; Rancho Cucamonga def. St. Bonaventure 15-3.

**Quarterfinals:** Nordhoff def. South Hills 13-5; Rim of the World def. West Valley 12-6; La Reina def. Beaumont 15-3; Rancho Cucamonga def. Yucaipa 11-7.

**Semifinals:** Rim of the World def. Nordhoff 11-7; La Reina def. Rancho Cucamonga 13-5.

**Final:** La Reina def. Rim of the World 12-6.

## SOUTHERN SECTION CIF ARCO *am/pm* 1995 GIRLS INDIVIDUAL TENNIS PLAYOFF RESULTS

### SINGLES

**First Round:** Faye DeVera (Villa Park) def. Danica Hardy (Righetti) 6-1, 6-1; Carla Nasca (Upland) def. Helena Horak (Westlake) 6-2, 6-2; Natalie Exon (Woodbridge) def. Jessica Kessler (Beverly Hills) 6-4, 6-1; Kara Warkentin (San Marcos) def. Andrea Avent (Peninsula) 6-1, 2-0 Retired; Nina Vaughan (Corona del Mar) def. Gina Pelazini (Pacific) 6-3, 7-6 (7-3); Maureen Diaz (Mayfield) def. Julie Ann Chidley (Riverside Poly) 6-1, 6-1; Sanaz Ghazal (Temecula Valley) def. Divya Bala (Redlands) 6-3, 6-3; Zuzana Stunova (Rio Mesa) def. Anuba Sarohia (Pasadena Poly) 6-2, 6-4.

**Quarterfinals:** Faye DeVera (Villa Park) def. Carla Nasca (Upland) 6-1, 6-0; Natalie Exon (Woodbridge) def. Kara Warkentin (San Marcos) 6-3, 2-6, 6-1; Nina Vaughan (Corona del Mar) def. Maureen Diaz (Mayfield) 6-3, 6-4; Zuzana Stunova (Rio Mesa) def. Sanaz Ghazal (Temecula Valley) 4-6, 6-3, 7-5.

**Semifinals:** Faye DeVera (Villa Park) def. Natalie Exon (Woodbridge) 7-6 (7-2), 6-1; Zuzana Stunova (Rio Mesa) def. Nina Vaughan (Corona del Mar) 6-4, 6-4.

**Final:** Zuzana Stunova (Rio Mesa) def. Faye DeVera (Villa Park) 7-6 (7-4), 7-5.

**Semifinals:** Faye DeVera (Villa Park) def. Natalie Exon (Woodbridge) 7-6 (7-2), 6-1; Zuzana Stunova (Rio Mesa) def. Nina Vaughan (Corona del Mar) 6-4, 6-4.

**Final:** Zuzana Stunova (Rio Mesa) def. Faye DeVera (Villa Park) 7-6 (7-4), 7-5.

### DOUBLES

**First Round:** Pilar Montgomery/Sarita Yardi (Santa Barbara) def. Nikisha Lynum/Angela Huang (Riverside Poly) 6-0, 6-0; Vanessa Godbey/Katie Canright (Newport Harbor) def. Annie Liang/Laura Ward (Diamond Bar) 6-2, 6-0; Michele Johnson/Katie Tierney (Dana Hills) def. Erin Smith/Katy Smith (Westlake) 2-6, 6-2, 6-3; Becky Raifer/Nickole Kabe (Peninsula) def. Kim London/Brittany Golledge (Dos Pueblos) 6-3, 4-6, 7-5; Shera Wiegler/Kirsten Gross (Calabasas) def. Christina Irinco/Shaland Romero (Burroughs/Burbank) 3-6, 6-1, 6-2; Holli Freudenberg/Amy Medlin (El

Modena) def. Stacey Tomkiewicz/Jane Kim (Peninsula) 6-0, 6-0; Robin Kondrack/Heather Gorman (Redlands) def. Jennie Fraser/Tara Cole (Palm Desert) 6-4, 7-5; Alissa Scott/Megan Wachtler (Corona del Mar) def. Kendale Nohre/Chantal Pershing (Burbank) 6-0, 6-0.

**Quarterfinals:** Montgomery/Yardi (Santa Barbara) def. Godbey/Canright (Newport Harbor) 7-5, 6-4; Johnson/Tierney (Dana Hills) def. Raifer/Kabe (Peninsula) 1-6, 6-4, 7-5; Wiegler/Gross (Calabasas) def. Freudenberg/Medlin (El Modena) 6-2, 4-6, 6-1; Scott/Wachtler (Corona del Mar) def. Kondrack/Gorman (Redlands).

**Semifinals:** Montgomery/Yardi (Santa Barbara) def. Johnson/Tierney (Dana Hills) 6-0, 6-2; Wiegler/Gross (Calabasas) def. Scott/Wachtler (Corona del Mar) 6-0, 6-1.

**Final:** Wiegler/Gross (Calabasas) def. Montgomery/Yardi (Santa Barbara) 7-6 (8-6), 7-6 (8-6).



## CIF SOUTHERN SECTION CORPORATE PARTNERS

### Supporting Tomorrow's Stars Today

- ARCO am/pm:** Major Title Sponsor of the CIF State-Wide  
**CALIFORNIA ANGELS:** Co-Sponsor of Academic Awards Program.  
**CONLIN BROS. SPORTING GOODS:** Official Sporting Goods Team Dealer of the CIF-SS.  
**DANIEL FREEMAN HOSPITALS, INC:** Official Health Care Provider of the CIF-SS.  
**FORD MOTOR COMPANY:** Co-Sponsor of Academic Awards Program.  
**GATORADE:** Official Thirst Quencher of the CIF-SS.  
**HERFF JONES:** Official Awards Company of the CIF State-Wide.  
**LOS ANGELES DODGERS:** Co-Sponsor of Shake for Sportsmanship Awards Program.  
**PACIFIC BELL SMART YELLOW PAGES:** Official Yellow Pages of the CIF-SS.  
**TLC SPORTSWEAR INC:** Official Sportswear of the CIF-SS.  
**WILSON SPORTING GOODS:** Official Ball of the CIF-SS.

In the game

→



**ARCO**   
*am/pm.*



**HERFF JONES**  
CLASS RINGS  
GRADUATION PRODUCTS



**Gatorade**  
THIRST QUENCHER

**Wilson**  
THE OFFICIAL BALL...



**TLC**  
SPORTSWEAR, INC.



**DANIEL FREEMAN HOSPITALS, INC.**  
MEMBER OF THE CARONDELET HEALTH SYSTEM  
SPONSORED BY THE SISTERS OF ST. JOSEPH OF CARONDELET

**Pacific Bell**  
SMART Yellow Pages

**Conlin Bros.**  
*Sporting Goods*



LOS ANGELES  
**Dodgers**



*Ford*



**CA**

**CIF Southern Section**  
**11011 East Artesia Blvd.**  
**Cerritos, CA 90703**  
**(310) 860-2414**

**DATED MATERIAL**

**NON-PROFIT ORG**  
**U.S. POSTAGE**  
**PAID**  
**Artesia, CA**  
**Permit No. 218**