



# CIF-SS BULLETIN

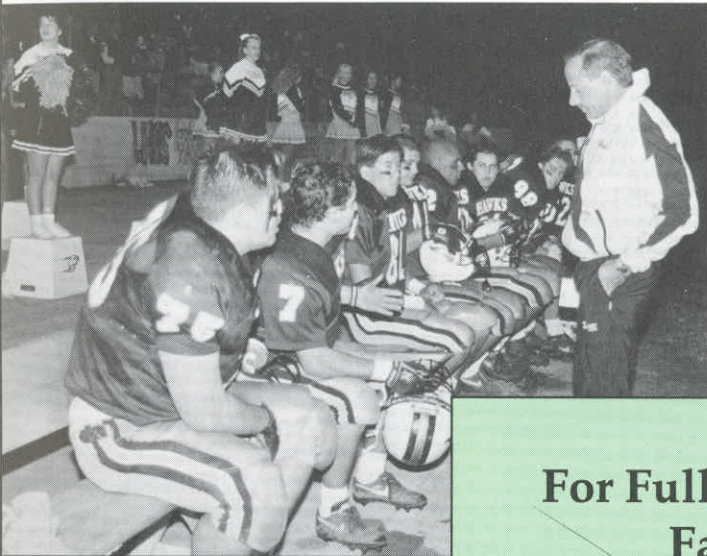
SOUTHERN SECTION



VOL. 56, NO. 2

WINTER 1993

1994



## For Full CIF-SS Fall Playoff Results

See pages 9-13, 15-16.

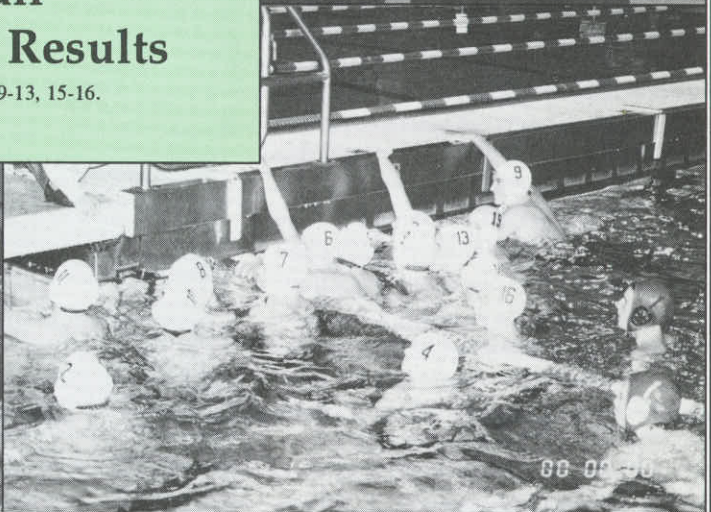


Photo by Jeff Ragatz/Professional Photography Productions

Photo by Todd Anderson/Professional Photography Productions

Photo by Neil Anderson/Professional Photography Productions

Photo by Jeff Ragatz/Professional Photography Productions

# PAC\*TEL<sup>®</sup> CELLULAR

# Conlin Bros. *Sporting Goods*

See PACTEL/CONLIN BROS. page 3.

Serving High School Athletics  
Since 1913

## PRESIDENT'S MESSAGE



**CIF-SS  
Pushes Forward**

**By Dr. Gary Smidderks, President  
CIF-SS Executive Committee**

Someone has wisely said "the doors of opportunity are marked, push!" Recent events in CIF Southern Section have given rise to the opportunity to make some changes in section operations and the Executive Committee has decided to "PUSH". These efforts are aimed at increasing office efficiencies and creating new lines of communication with the Executive Committee.

The newly appointed Finance Committee, under the leadership of section Treasurer Tom Triggs, has worked with Commissioner Crowley and the other administrators in the formation of these new operational strategies and procedures. The first outcome of their work has been a reorganization of office operations. Administrative and managerial tasks have been realigned to reduce staff. It is believed that, due to the fine office staff, these changes will not negatively impact section operations and that the same high standards of organization service will continue unabated.

In addition, new guidelines have been established related to operational expenses and reporting. In this area, credit card usage will be closely monitored by the administrative committee. Beyond this, more detailed financial reports will be presented regularly to the Executive Committee. These will enable committee members to be more aware of the financial activities of the section and be responsive to budget issues.

We believe the steps taken will ensure the further stability and growth of Southern Section. Our section has a tradition of leadership in sports management throughout the state, as well as the nation, and we believe these changes will serve to further this reputation.

## CIF-SS COUNCIL MEETING MINUTES October 21, 1993

The October meeting of the CIF Southern Section Council was called to order by President Dr. Gary Smidderks at 9:05 a.m., Thursday, October 21, 1993 at the Sequoia Athletic Club in Buena Park. All leagues were present.

1. **MINUTES** -- It was moved, seconded and passed to approve the minutes of the CIF-SS Council meeting of April 29, 1993 as published in the September Bulletin; the minutes of the June 18, 1993 meeting of the CIF-SS Executive Committee, as published in the September Bulletin; minutes of the August 14, 1993 meeting of the CIF-SS Executive Committee, as published in the September Bulletin; minutes of the August 23, 1993 meeting of the CIF-SS Executive Committee, as distributed to the Council; minutes of the CIF-SS Executive Committee of September 29, 1993, as distributed to the Council; minutes of the CIF-SS Executive Committee of October 6, 1993, as distributed to the Council and the minutes of the October 13, 1993 CIF-SS Executive Committee meeting, as distributed to the Council.

2. **PRESIDENT'S UPDATE** -- Dr. Gary Smidderks reviewed and described the background and sequence of events which led to the resignation of Stan Thomas as Commissioner of the Southern Section.

3. **OCEAN LEAGUE PROPOSAL-BOYS' TENNIS** -- Jason Newman reviewed a proposal to change the Boys' tennis scoring format. One

point would continue to be awarded for each singles win and change the scoring to one and one-third points for a doubles set win. This breaks down to nine points for singles and twelve points for doubles.

4. **TEN RUN MERCY RULE - BASEBALL** -- Mr. Art Singer, Chairman of the Fees Communication Committee of the Officials Association and Mr. Bud Bellinfante, President of the Southern California Baseball Officials Association reviewed a proposal to adopt the ten run mercy rule for the varsity level in baseball.

5. **HOME SCHOOLS** -- Dr. Tom Jacobson, CIF-SS Past President, reviewed a proposal regarding home school students being presented to the State Federated Council.

6. **SUNSET LEAGUE 50% PLAYOFF ENTRY PROPOSAL** -- Mr. Gary Ernst, principal of Fountain Valley High School, representing the Sunset League, presented a proposal to allow 50% of each league to have automatic entry into the playoffs. Following discussion, a motion to approve the proposal was defeated.

7. **SUNSET LEAGUE AMENDMENT OF ASSOCIATION RULE 309 PROPOSAL** -- Mr. Jim Staunton, principal of Huntington Beach High School, presented a proposal to amend the Association Rule 309. Following discussion, a motion to approve the proposal was defeated.

8. **1994-98 RELEAGUING** -- George Giokaris, See CIF-SS COUNCIL MEETING page 14.

### California Interscholastic Federation Southern Section

11011 Artesia Blvd. (90701) -- P.O. Box 488 (90702)  
Cerritos, California  
(310) 860-2414 -- FAX (310) 860-1692

#### OFFICERS

Dr. Gary Smidderks, Superintendent/Principal  
Los Angeles Baptist High School, President

Dr. Tom Jacobson, Principal  
Corona Del Mar High School, Past-President

Dr. Ken Gunn, Principal  
Walnut High School, President-Elect

Tom Triggs, Principal  
Buena Park High School, Treasurer/Orange County Rep.

Dean Crowley, Acting Commissioner of Athletics

#### BULLETIN ADMINISTRATOR

Karen Hellyer

#### BULLETIN EDITOR

Sharon Hargrove

*Bulletin published three times yearly by CIF Southern Section*

## PACTEL CELLULAR & CONLIN BROS. SUPPORT CIF ACTIVITIES & EVENTS

Once again we would like to welcome PacTel Cellular and Conlin Bros. to the CIF-SS Corporate team. "It is indeed a pleasure to continue the CIF-SS's relationship with PacTel Cellular and Conlin Bros. Sporting Goods," said Dean Crowley, Acting CIF-SS Commissioner of Athletics. "These fine organizations have again shown their commitment to high school athletics. We are grateful for their participation as sponsors and we encourage the personnel of our member schools to utilize these outstanding companies when purchasing goods and services," said Crowley.

PacTel, "The official Cellular Service provider of the CIF-SS," is currently in the second year of a three year agreement. "PacTel firmly believes in supporting California's secondary schools and their vital extracurricular programs," notes Conley Smith, Manager, Advertising Communications for PacTel Cellular. "We extend our appreciation and praise to the CIF Southern Section an organization that adds true depth experience and value to the lives of our future leaders." They are recognized throughout our section by way of program advertisements, display of banners, public address/message board announcements, mailouts and additional promotional opportunities relating to playoffs and championship events. In addition, PacTel donates money to a member school booster clubs for every phone utilizing their service.

Conlin Bros. opened their doors on Fifth and Fairfax in Los Angeles 49 years ago this August. What a great track record in today's economy. Conlin Bros. signed a one year extension for the 1993-94 season, for a total of eight years of sponsorship participation. "We use the Southern Section as a reference of information and have enjoyed our relationship immensely," said Dick Conlin, President of Conlin Bros. Sporting Goods. "Currently, our emphasis is directed toward maintenance and repair of indoor and outdoor athletic equipment. In addition, we specialize in installation of new equipment and service needs (for school-based athletic programs)," said Conlin. Conlin Bros. specializes in outfitting teams with equipment, uniforms, and related supplies for all athletic events.

The CIF-SS encourages member schools to consider these outstanding companies when purchasing goods and services.



Photo by Jeff Regentz/Professional Photography Productions

## DEAN CROWLEY TO LEAD CIF-SS

The CIF Southern Section Executive Committee announced at their meeting on November 23, 1993, the appointment of Dean Crowley as Commissioner of Athletics for the remainder of the 1993-94 school year.

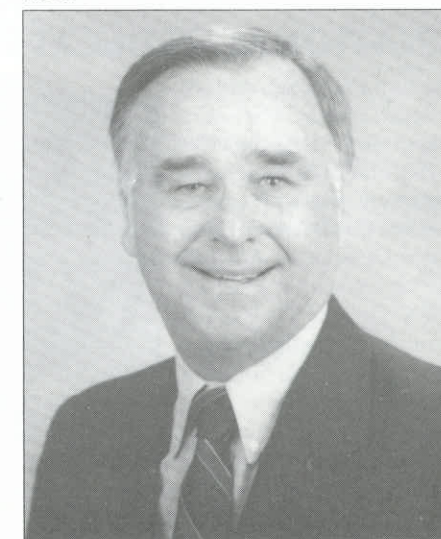
Crowley, 59, has been with the Southern Section since 1976. He was named Associate Commissioner five years ago. "I am pleased to be at the helm for the rest of the year," Crowley said. "I look forward to directing the staff, which will continue to be committed to top service to our schools."

In addition to his duties at the Southern Section, Crowley also is very active in NCAA football as an official and Division I women's basketball as the Supervisor of Officials for the West Coast Conference. He will continue to manage the sports of cross country, basketball, and track & field, in addition to his new duties as commissioner.

Due to a hiring freeze, Crowley's position as Associate Commissioner will not be filled. At the end of the school year, the Executive Committee will review the commissioner position along with the structure

of the office and make any necessary changes in accordance with the strategic planning of the entire state.

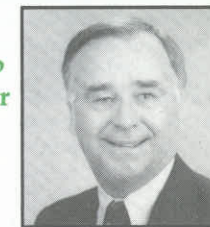
Congratulations to you Dean and good luck!



**DEAN CROWLEY**

## COMMISSIONER'S CORNER

**Sportsmanship  
A Challenge for  
Us All**



**By Dean Crowley  
Acting Commissioner of Athletics**

To say the least, the CIF Southern Section has come a long way in the last 81 years to become a recognized leader in high school athletics. However, it is my belief that we have our work cut out for us if we are to maintain the true value of high school athletics for our students and the communities we serve.

We must focus our efforts on the principles of good sportsmanship, ethical behavior and integrity. Jack Roberts, Executive Director of the Michigan High School Activities Association said it best when he stated, "Good sportsmanship is the essence of what we are all about in interscholastic athletics."

School administrators must assume the leadership role in establishing the importance of good sportsmanship. There is little doubt the quality of sportsmanship and behavior displayed at athletic events reflects the leadership provided by the administrative staff.

No doubt one of the most difficult tasks for a school administrator is to make sure the coach is providing the necessary leadership for athletes and the student body. The coach has more influence on the sportsmanship of our schools than any other individual. It is important that coaches demonstrate and apply leadership, integrity, responsibility and sportsmanship at all times both on and off the playing field/court.

If we wish to have our athletic programs continue to be an educational tool, all involved must acknowledge the fact that high school sports are not on the same level as collegiate and professional sports. A proper perspective must be maintained if the potential educational values of athletic competition are to be realized. Good sportsmanship is concerned with the behavior of all involved in the game.

The challenge is before us—our athletes are constantly in the public eye. They are our leaders of today. Many look to them as a source of community pride. Many students in our schools look to the athletes as a role model they would like to emulate. This is why a continued effort in setting high

See COMMISSIONER'S CORNER page 6.



# MINUTES OF THE EXECUTIVE COMMITTEE MEETING

## November 23, 1993

The November meeting of the CIF-SS Executive Committee was called to order by President Dr. Gary Smidderks at 1:25 p.m., Tuesday, November 23, 1993 at the CIF Southern Section Office. All members were present with the exception of Dr. Debra Bradley, Dr. Ron Franklin, Dr. James Fleming and Maureen Sanders.

- 1. MINUTES** -- It was moved, seconded and passed to approve the minutes of the CIF-SS Executive Committee meeting of October 21, 1993.
- 2. PRESIDENT'S UPDATE** -- Dr. Gary Smidderks reviewed with the committee the CIF-SS financial obligation for legal fees. The State CIF has agreed to assist with 40% of the amount due. The legal process was followed and completed and the matter has been put to rest. Also, the site and options for the upcoming January Executive Committee meeting were discussed.
- 3. ACTING COMMISSIONER'S UPDATE** -- Dean Crowley, Acting Commissioner, updated the committee on the progress of the playoffs. He also reviewed the number of 213's and hardship appeals processed, status of the area workshops and league visitations by the office administrative staff. In addition, he outlined for the committee, the new series of press releases, the upcoming negotiations for officials fees, the new cover for playoff programs, the nomination of Ann Meyers-Drysdale into the National Federation Hall of Fame, leagues changing entries and the possibility of developing a model for league constitutions.
- 4. AREA REPRESENTATIVE REPORTS** -- The Executive Committee area representatives reviewed a court case challenging the Eight Semester Rule, player conduct, schools happy with four year Releaguening cycle, new leagues now meeting and organizing, and concerns regarding restructuring.
- 5. BOYS' ATHLETIC DIRECTOR UPDATE** -- Donn Clickard expressed a concern regarding the variety of timelines for spring breaks and the affect they have on scheduling. He also discussed the progress on certifying coaches for exhibition matches and the need to survey the number of foreign exchange students in our programs.
- 6. GIRLS' ATHLETIC DIRECTOR UPDATE** -- Donna Gunstream questioned the need for area liaisons and school auditors have a concern regarding checks going to officials not assigned when a contest is rescheduled.
- 7. SUPERINTENDENT'S UPDATE** -- Acting Commissioner Dean Crowley reviewed the superintendent meeting which he and Dr. Ron Franklin recently held in the CIF-SS Office. Superintendents commented on the improved line of communication, their desire to have, as policy, all proposals to Council to include financial implications to schools or sections and concerns regarding playoffs and travel.
- 8. TREASURER'S REPORT** -- Tom Triggs reviewed a list of schools currently delinquent in payment of dues for the 1993-94 school year. The Executive Committee members will followup with schools in their specific geographical areas. In addition, he reviewed a recommendation from the Cost Containment Committee. It was moved, seconded and passed to bring to the CIF-SS Council the recommendation that all proposals include financial implications on schools and sec-

- tion. Also, it was determined to ask this become a procedural requirement temporarily. The CIF-SS office staff will draft the format for presentation to the Council at its January 27, 1994 meeting.
- At 2:45 p.m. it was moved, seconded and passed to go into closed session.
- At 4:15 p.m., the committee reconvened after its personnel session to meet with Bob Noel, and review the liability insurance coverage.
- The Committee returned to closed personnel session and did not reconvene until 5:30 p.m. at which time they returned to the agenda as follows:
- 8. TREASURER'S REPORT (continued)** -- It was moved, seconded and passed that the Executive Committee direct the staff to review sites for an Executive Committee meeting on January 22, 1994.
  - 9. STATE FEDERATED COUNCIL REPORT** -- Past President, Dr. Tom Jacobson, reviewed with the committee the results of action items at the October meeting of the State Federated Council: (a) Cross Country Entries - tabled; (b) Section Indemnification - passed; (c) Volleyball Championship format - failed and 19 Year Old Rule - failed. Additionally, Dr. Jacobson reviewed the following items which will be action at the next meeting of the State Federated Council; home schools; gender orientation; arbitration mid-court line (Girls' basketball) and rally scoring in volleyball.
  - 10. STATE CIF UPDATE** -- Dr. Gary Smidderks, President, and Dr. Robert Packer, Past-President of the State Federated Council, reviewed the State marketing plan discussing the L.A. City Section Food for Less. The state will be establishing performance objectives for M and FM.
  - Dr. Ken Gunn, President-Elect, reviewed strategic planning. It was felt that the seven goals delineated in the report were the most critical issues in the presentation. The committee feels that we need to solicit support of Section members for alternate proposals and the committee also discussed the possibility of developing a road show to inform schools of this issue and having an opportunity to discuss the format.
  - 11. ORANGE COUNTY UPDATE** -- Dean Crowley, Acting Commissioner of Athletics, updated the committee on his recent meeting with State CIF Commissioner Tom Byrnes and Superintendent of Brea Unified School District, Dr. Ed Seal.
  - 12. INGLEWOOD HIGH SCHOOL PROBATION** -- It was moved, seconded and passed to remove Inglewood High School from probation, effective September 1993.
  - 13. AYALA HIGH SCHOOL BASKETBALL GAME REVIEW** -- Dean Crowley, Acting Commissioner of Athletics provided an update on the reimbursement of basketball playoff expenses from Ayala High School.
  - 14. RESIGNATION OF MAUREEN SANDERS** -- The committee accepted the resignation of Maureen Sanders, Coast Area Representative. It was moved, seconded and passed to appoint Marge Godfrey, Principal of Millikan High School to fulfill the unexpired term of Ms. Sanders.
  - 15. EXECUTIVE COMMITTEE REPRESENTATION** -- Dr. Gary Smidderks, President, led a general discussion as it relates to State delegates

- servicing on the Executive Committee. The committee felt there was some conflict in our rules regarding the latest rule passed limiting representation from geographical areas. Also, discussion was held regarding budget constraints.
- 16. BUILDING LEASE** -- Bill Clark, Administrator, reviewed with the Committee the current building lease with the ABC Unified School District.
  - 17. NEW MEMBERSHIP** -- It was moved, seconded and passed to deny the request of MTC - Inland Empire Job Corp Center for membership.
  - 18. CIF-SS EMPLOYEE MEDICAL BENEFITS** -- It was moved, seconded and passed to adopt a resolution fixing the employer's contribution under the Public Employees' Medical and Hospital Care Act.
- There being no further business to come before the Committee, the meeting adjourned at 6:18 p.m.

Submitted by:

KAREN HELLYER  
CIF-SS ADMINISTRATOR

Approved by

DEAN CROWLEY  
ACTING COMMISSIONER

## COMMISSIONER'S CORNER

(Continued from page 3)

standards with reference to good sportsmanship is vitally important to the school community.

Education and athletics must go hand-in-hand for interscholastic athletics to be an extension of the classroom. After all, isn't the athletic field/court as much a learning laboratory as the classroom?

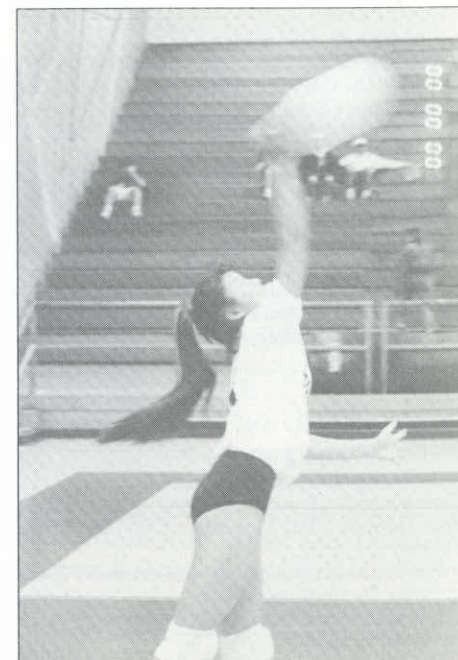
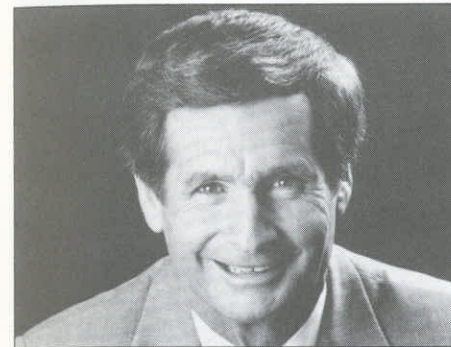


Photo by Jeff Regetz/Professional Photography Productions

## 1993 ATHLETIC ADMINISTRATORS SYMPOSIUM SLATED FOR FEBRUARY 2, 1994



Dr. Jim Tunney

The 14th Annual Athletic Administrators Symposium promises to be one to remember. This year's list of workshops are timely and informative. Featuring NCAA issues for your college bound athletes, eligibility rules, media relations, communicable disease procedures and more there is something to interest everyone.

This year's opening featured speaker will be the colorful Tommy Lasorda, manager of the Los Angeles Dodgers. Lasorda looks to entertain you well with his tales and wisdom from long years of experience dealing with various challenges and personalities in his lustrous career. He managed in four World Series and six League Championship Series and has guided the National League All-Stars on six occasions compiling a 4-2 record. In his spare time he spreads goodwill and encouragement to thousands through speeches and appearances to various charities and private groups, as his appearance at this event.

Our featured keynote speaker is just as exciting. Dr. Jim Tunney, retired NFL referee, brings a special expertise with him on

his talks. He has an extensive background as an educator; is a well-known speaker and author; and an accomplished consultant. He has received the National Speakers Association prestigious C.P.A.E. Award and is serving as Headmaster of York School, a private, non-profit secondary school in Monterey, California.

Be sure to take a couple of minutes and visit with the many vendors who will be set up in the back of the room. They always have a wonderful selection of new products and ideas for your sporting events and fund raisers.

The format of the symposium will be the same as in past years. As soon as your school receives the registration flyer, fill it out and mail it back with your check right away. Registration at the event will then be much easier for you.

The Southern Section looks forward to presenting this year's symposium and knows you will pick up a great deal of information that can be applied at your school, but you will also have a lot of fun. See you there!



Tommy Lasorda

## BASKETBALL CHAMPIONSHIPS TO BE HELD AT ANAHEIM ARENA

The CIF Southern Section office is proud to announce that the 1993-94 Boys Basketball Championships will be held at the new Anaheim Arena, home of The Mighty Ducks.

How exciting it will be for our student-athletes to have the opportunity to play in a brand new facility. The Arena is easily accessible from five major freeways and is close to Anaheim Stadium.

We will be holding the boys Divisions I through III at The Pond (the Ducks name for the Arena) on Saturday, March 5, 1994. Boys Division IV will be held at the Bren Center at UCI on Friday, March 4, 1994 with Division V playing at an alternate site. For the girls, Divisions I through III are scheduled for Cal Poly Pomona on Saturday, March 5, 1994. All other division will be at alternate sites. Please keep in mind that all dates and sites are subject to change.

Also, the divisional breakdowns are as follows: IAA - 1,775 and up; IA - 1,500 to 1,774; IIAA - 1,301 to 1,499; IIA - 1,125 to 1,300; IIIAA - 980 to 1,124; IIIA - 750 to 979; IVAA - 460 to 749; IVA - 301 to 459; VAA - 85 to 300; and VA - 1 to 86. Remember that enrollments are based on grades 10, 11 and 12 and single gender schools are doubled.

We look forward to working with the Arena and the participating schools. A fun time should be had by all.



The Excitement  
is Building!

## RULE REVIEW



Football -  
How Many  
Games  
in a Week?

By Bill Clark  
CIF-SS Administrator

Over the past few years we have seen an increase in potential abuses of football players by allowing them to compete in more than one level of competition during a week. CIF Southern Section rules state that a team may not compete in more than two contests in an 8-day period and an individual may not participate in more than one level of competition in a day.

These rules were written in such a way so schools could, for example, play a varsity game on Friday night and those athletes that did not play very much would be able to play in a junior varsity contest the next day. We are finding now that many schools are scheduling their JV games on Thursdays prior to the varsity contest. It seems that where some schools are experiencing a decrease in the number of athletes coming out for football, they are finding themselves using some players in both JV and varsity contests in the same week.

It was not the intent of the rule to allow a student-athlete to be able to start or play a great deal in both contests. The intent was to give schools some flexibility for athletes that are on special teams or play sparingly to come back and play in another game. If a school does not have enough athletes to field more than one team, they probably should consider dropping one of those teams.

Additionally, it would be the hope of the Southern Section office that leagues would look into rules relating to athletes moving from one team to the other. Many leagues have rules in all sports stating that once a student plays a varsity game, they cannot move down for the rest of the year or vice-versa. There is some real potential for injury if schools allow athletes to compete in more than one contest in a week, particularly if they are playing a lot in each contest. Hopefully, principals will review this matter at their school and also discuss it at their league level.





# CIF SOUTHERN SECTION 1993 FOOTBALL PLAYOFF RESULTS

**DIVISION I  
FIRST ROUND:**

Bishop Amat 37  
Lakewood 6

Antelope Valley 20  
Fontana 0

Mater Dei 17  
St. Paul 14

Long Beach Poly 20  
Hesperia 12

San Clemente 45  
Quartz Hill 21

Crespi 35  
Jordan 7

Loyola 21  
Capistrano Valley 6

Eisenhower 48  
Palmdale 7

**QUARTERFINALS:**

Antelope Valley 21  
Bishop Amat 7

Mater Dei 17  
Long Beach Poly 14

Crespi 24  
San Clemente 21

Eisenhower 37  
Loyola 19

**SEMIFINALS:**

Mater Dei 15  
Antelope Valley 11

Eisenhower 7  
Crespi 3

**FINALS:**

Eisenhower 56  
Mater Dei 3

**DIVISION II  
FIRST ROUND:**

Los Alamitos 24  
Warren 13

Edison 40  
Canyon/C.C. 20

Fountain Valley 34  
Muir 28

El Dorado 21  
Paramount 16

Hart 61  
Pasadena 25

Dominguez 35  
Esperanza 19

Gahr 14  
Crescenta Valley 10

Huntington Beach 35  
Burroughs/B. 7

**QUARTERFINALS:**

Los Alamitos 34  
Edison 8

Fountain Valley 34  
El Dorado 13

Dominguez 44  
Hart 42

Huntington Beach 24  
Gahr 10

**SEMIFINALS:**

Los Alamitos 42  
Fountain Valley 21

Huntington Beach 18  
Dominguez 12

**FINALS:**

Los Alamitos 39  
Huntington Beach 21

**DIVISION III  
FIRST ROUND:**

Newbury Park 39  
Leuzinger 6

Montebello 24  
Ayala 21

Bell Gardens 27  
Ventura 18

Peninsula 24  
Diamond Bar 14

West Covina 27  
Royal 10

Buena 25  
Schurr 14

Westlake 42  
Santa Barbara 26

Hawthorne 59  
Baldwin Park 17

**QUARTERFINALS:**

Newbury Park 41  
Montebello 20

Bell Gardens 20  
Peninsula 17

Buena 27  
West Covina 26 (OT)

Hawthorne 24  
Westlake 22

**SEMIFINALS:**

Newbury Park 43  
Bell Gardens 26

Hawthorne 44  
Buena 20

**FINALS:**

Newbury Park 22  
Hawthorne 14

**DIVISION IV  
FIRST ROUND:**

Canyon Springs 27  
Canyon/A. 21

Damien 25  
Santa Margarita 20

Notre Dame/S.O. 22  
Rubidoux 19

Villa Park 30  
Corona del Mar 28

Glendora 26  
Newport Harbor 10

Riverside Poly 34  
St. Bernard 12

Foothill 26  
Chino 10

Irvine 35  
Chaminade 16

**QUARTERFINALS:**

Canyon Springs 31  
Damien 21

Notre Dame/S.O. 33  
Villa Park 6

Glendora 27  
Riverside Poly 8

Irvine 27  
Foothill 24

**SEMIFINALS:**

Canyon Springs 27  
Notre Dame/S.O. 7

Irvine 42  
Glendora 21

**FINALS:**

Irvine 41  
Canyon Springs 14

**DIVISION V  
FIRST ROUND:**

Norco 35  
Etiwanda 6

Pacific 21  
Perris 14

Barstow 42  
Calxico 12

Alta Loma 46  
Valley View 21

A.B. Miller 32  
Chaffey 0

Indio 28  
Corona 17

Rancho Cucamonga 27  
Palm Desert 7

Temecula Valley 7  
Centennial/Cor. 0

**QUARTERFINALS:**

Norco 43  
Pacific 0

Barstow 16  
Alta Loma 14

A.B. Miller 19  
Indio 15

Temecula Valley 17  
Rancho Cucamonga 13

**SEMIFINALS:**

Norco 50  
Barstow 7

Temecula Valley 17  
A.B. Miller 14

**FINALS:**

Norco 42  
Temecula Valley 0

**DIVISION VI  
FIRST ROUND:**

Valencia 28  
Northview 0

Santa Fe 24  
El Monte 19

Savanna 41  
Los Altos 22

Covina 21  
El Rancho 3

Anaheim 34  
Arroyo 32

Whittier 28  
Charter Oak 6

Western 28  
South Hills 20

Ganessa 28  
Rosemead 6

**QUARTERFINALS:**

Valencia 27  
Santa Fe 0

Savanna 21  
Covina 17

Whittier 14  
Anaheim 0

Western 28  
Ganessa 14

**SEMIFINALS:**

Savanna 20  
Valencia 0

Whittier 24  
Western 12

**FINALS:**

Savanna 20  
Whittier 13

**DIVISION VII  
FIRST ROUND:**

Sierra Vista 28  
Redondo 21

Rancho Alamitos 24  
Troy 14

Culver City 14  
Azusa 13

Arroyo Grande 21  
Los Amigos 13

Lompoc 27  
Sonora 24

Mira Costa 28  
Pomona 7

Montclair Prep 49  
La Habra 14

Kennedy 28  
San Luis Obispo 0

**QUARTERFINALS:**

Rancho Alamitos 28  
Sierra Vista 13

Arroyo Grande 35  
Culver City 30

Mira Costa 15  
Lompoc 8

Kennedy 28  
Montclair Prep 7

**SEMIFINALS:**

Rancho Alamitos 27  
Arroyo Grande 14

Mira Costa 23  
Kennedy 19

**FINALS:**

Mira Costa 29  
Rancho Alamitos 17

**DIVISION VIII  
FIRST ROUND:**

Norte Vista 25  
La Mirada 20

Costa Mesa 35  
South Pasadena 15

San Marino 14  
Norwalk 6

La Sierra 38  
Cantwell-Sac. Hrt. 14

Bellflower 21  
Serra 0

Trabuco Hills 35  
Temple City 7

Laguna Hills 29  
St. Monica 16

Yucaipa 35  
Artesia 27

**QUARTERFINALS:**

Costa Mesa 35  
Norte Vista 12

San Marino 28  
La Sierra 15

Trabuco Hills 33  
Bellflower 8

Laguna Hills 27  
Yucaipa 26

**SEMIFINALS:**

Costa Mesa 35  
San Marino 7

Trabuco Hills 42  
Laguna Hills 20

**FINALS:**

Trabuco Hill 44  
Costa Mesa 6

**DIVISION IX  
FIRST ROUND:**

Santa Ynez 46  
Rancho Verde 0

Carpinteria 20  
Murrieta Valley 14

Atascadero 42  
North Torrance 21

Moorpark 27  
South Torrance 22

Beaumont 39  
Calabasas 6

Cabrillo 31  
Bishop Diego 23

Nordhoff 30  
West Torrance 24

Paso Robles 28  
Oak Park 18

**QUARTERFINALS:**

Santa Ynez 49  
Carpinteria 0

Atascadero 41  
Moorpark 7

Cabrillo 24  
Beaumont 3

Paso Robles 42  
Nordhoff 7

**SEMIFINALS:**

Atascadero 21  
Santa Ynez 16

Paso Robles 21  
Cabrillo 14

**FINALS:**

Atascadero 21  
Paso Robles 12

**DIVISION X  
FIRST ROUND:**

L.A. Baptist 34  
Silver Valley 20

St. Genevieve 24  
Calvary Chap./S.A. 21

Big Bear 35  
Cathedral 0

Ontario Chr. 19  
Kern Valley 13

Brethren Chr. 34  
Rosamond 6

Cathedral City 48  
Murphy 12

Village Chr. 17 (OT)  
Valley Chr./C. 14

Yucca Valley 14  
Bishop 10

**QUARTERFINALS:**

L.A. Baptist 28  
St. Genevieve 20

Ontario Chr. 17  
Big Bear 14

Brethren Chr. 27  
Cathedral City 13

Yucca Valley 34  
Village Chr. 13

**SEMIFINALS:**

L.A. Baptist 45  
Ontario Chr. 0

Brethren Chr. 28  
Yucca Valley 21 (OT)

**FINALS:**

L.A. Baptist 43  
Brethren Chr. 21

**DIVISION XI  
FIRST ROUND:**

Boron 39  
Coast Union 10

Templeton 49  
So. Cal. Chr. 14

Hamilton 19  
Mission Prep 7

Linfield 13  
Mammoth 12

**SEMIFINALS:**

Boron 54  
Templeton 20

Hamilton 32  
Linfield 7

**FINALS:**

Boron 42  
Hamilton 14

**EIGHT-MAN LARGE  
FIRST ROUND:**

Brentwood  
Bye

Hesperia Chr. 20  
Webb 13

Pasadena Poly 49  
Capistrano Vly. Chr. 28

So. Bay Lutheran  
Bye

St. Margaret  
Bye

Chadwick  
Bye

Flintridge Prep 54  
Arrowhead Chr. 7

Faith Baptist  
Bye

**QUARTERFINALS:**

Brentwood 28  
Hesperia Chr. 0

Pasadena Poly 51  
So. Bay Lutheran 35

St. Margaret's 49  
Chadwick 38

Faith Baptist 47  
Flintridge Prep 21

**SEMIFINALS:**

Brentwood 53  
Pasadena Poly 30

Faith Baptist 52  
St. Margaret's 44

**FINALS:**

L.A. Baptist 35  
Faith Baptist 34

**EIGHT-MAN SMALL  
FIRST ROUND:**

Bloomington Chr. 52  
Calvary Chap./R. 0

Liberty Chr. 28  
Bethel Chr./R. 14

Lone Pine 32  
Ambassador Chr. 28

Gateway Chr. 42  
Christian Ctr. Aca. 26

Ribet Aca. 52  
Claremont/H.B. 6

Masada 22  
Riverside Chr. 12

Shandon 40  
Grace Brethren 0

Bethel Chr./L. 60  
West Shores 0

**QUARTERFINALS:**

Bloomington Chr. 62  
Liberty Chr. 14

Lone Pine 44  
Gateway Chr. 34

Masada 24  
Ribet Aca. 20

Shandon 36  
Bethel Chr./L. 18

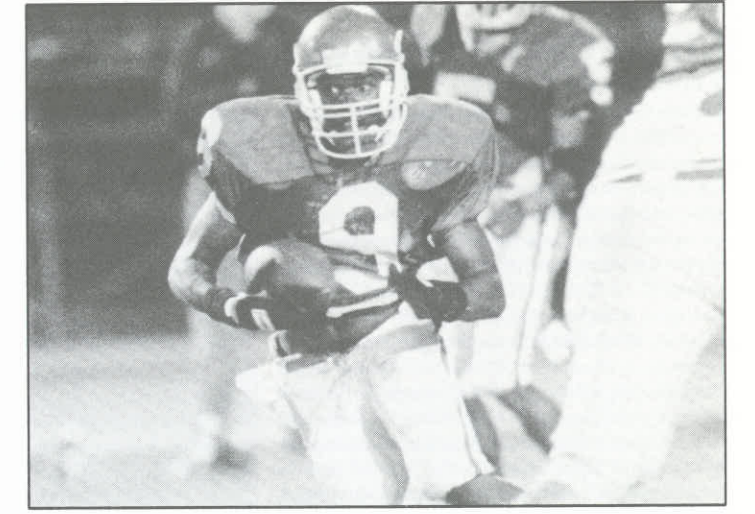
**SEMIFINALS:**

Bloomington Chr. 50  
Lone Pine 14

Masada 26  
Shandon 22

**FINALS:**

Bloomington Chr. 43  
Masada 22



## CIF SOUTHERN SECTION 1993 FOOTBALL CHAMPIONS

**DIVISION I**  
Eisenhower

**DIVISION V**  
Norco

**DIVISION IX**  
Atascadero

**DIVISION II**  
Los Alamitos

**DIVISION VI**  
Savanna

**DIVISION X**  
Los Angeles Baptist

**DIVISION III**  
Newbury Park

**DIVISION VII**  
Mira Costa

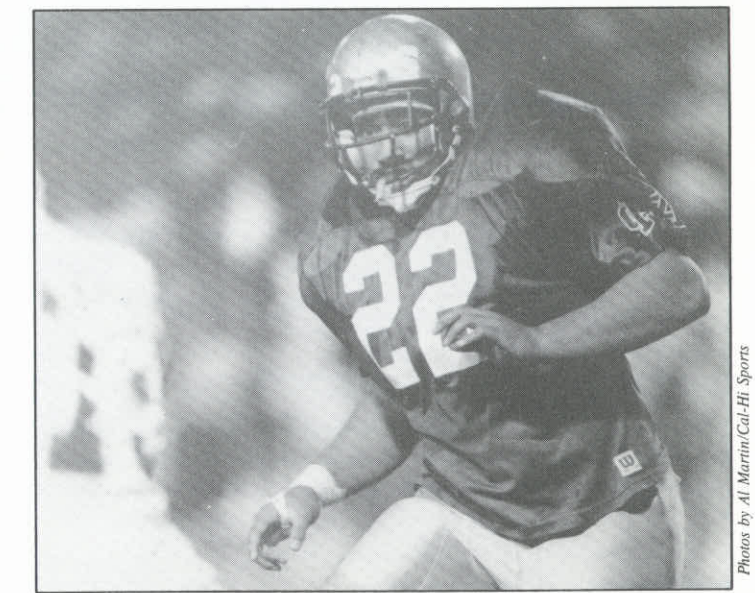
**DIVISION XI**  
Boron

**DIVISION IV**  
Irvine

**DIVISION VIII**  
Trabuco Hills

**8-MAN LARGE**  
Brentwood

**8-MAN SMALL**  
Bloomington Christian



### CIF-SS Council Meeting - October 21, 1993

(Continued from page 2)

CIF-SS Releaguings Chairperson, presented the respective proposals for the 1994-98 Releaguings Cycle. Following discussion, area proposals for the Citrus Belt, Desert, Foothill, Mt. Sac, Parochial and Small Schools were approved.

In the Coast Area the original proposal was approved. An appeal from Dr. William Watkins, principal of El Segundo High School; Dr. Bill Bawden, Assistant Superintendent of Torrance Schools; Dr. Bill Manahan, Superintendent of El Segundo Unified; Barry Gross, principal of South Torrance High School and Ed Moore, a parent, in reference to El Segundo High School's placement in the Ocean League was heard by the Council. Speaking in opposition to the appeal and in support of the area proposal was Larry Reid, Associate Principal of Hawthorne High School and Herb Hinsche, Assistant Principal of Mira Costa High School. Following discussion, a motion to send the entire proposal back to the Coast Area for reconsideration was approved.

With regard to the Northern Area, the original proposal was approved. An appeal from Greg Halfman, principal of Morro Bay High School, with reference to their placement in the Tri-County League was heard by the Council, Jerry Walsh, principal of Righetti High School and Don Drake, Coordinator of the Tri-County League spoke in favor of the Northern Area Releaguings Proposal. Following discussion, a motion to send the entire proposal back to the Northern Area for reconsideration was defeated.

In the Orange County Area, the original proposal was approved. An appeal from Dr. Jack Clement, principal of El Toro High School with reference to their placement in the Sea View League was heard by the Council. Additionally, Ray Dunne, principal of Servite High School appealed their placement in the new league. Lyle Porter, principal of Mater Dei High School spoke in favor of the appeal. Dr. Warren Stephenson,

principal of Western High School spoke in opposition to the appeal and in support of the Area Releaguings Proposal. Following discussion, a motion to deny the appeals was approved.

**9. STATE FEDERATED COUNCIL REPORT -** Dr. Tom Jacobson, CIF-SS Past President, presented the following agenda items for the October State Federated Council requiring action by the Southern Section Council in order to give our delegates voting direction:

(a) Reduction of Cross Country entries - vote to support  
(b) Proposal for changing Volleyball Championship format - vote to deny

(c) Modification of By-Law 201 - vote to deny  
**10. COMMISSIONER'S UPDATE --** Dean Crowley, Acting Commissioner, discussed the symposium; beginning date of November 13 for the winter sports season; timeline for 1994-98 Playoff Groupings; continuing of league visitations by office administrators; importance of leagues assisting league coordinators reporting of playoff entry information and the success of the recently completed regional workshops.

**11. TREASURER'S REPORT --** Tom Triggs, Treasurer, reviewed the recently completed auditor's report. As a result, the Executive Committee will form a new budget committee which will:

(1) Review the current financial status of the CIF-SS Office.

(2) Examine the office budget/accounting practices and procedures.

(3) If necessary, reduce operating expenses.

**12. STATE CIF REPORT --** Dr. Tom Jacobson, CIF-SS Past President, reported on action taken at the May State Federated Council meeting which included the modification of By-Law 203(a); the deletion of By-Law 202; Modification of By-Law 513; Modification of By-Law 501; deletion of By-

laws 1600-1601 and the modification of By-Law 1702(a).

**13. NATIONAL FEDERATION SUMMER MEETING --** Dr. Gary Smidderks, President of the Council, reported on the National Federation Summer Meeting held in Nashville, Tennessee. The National Federation is in transition with a new Executive Director. Dr. Smidderks also noted the Federation is dealing with some difficult issues at this time and are operating with a new open style of communication.

**14. ORANGE COUNTY UPDATE --** Tom Triggs, Treasurer and Orange County Representative on the Executive Committee, reported plans for an Orange County Section are continuing in conjunction with the State Strategic Planning process.

**15. STRATEGIC PLANNING --** Dr. Gary Smidderks, President of the Council, reported that the interim report for the CIF Strategic Planning Steering Committee would be presented to the State Federated Council at its October 1993 meeting.

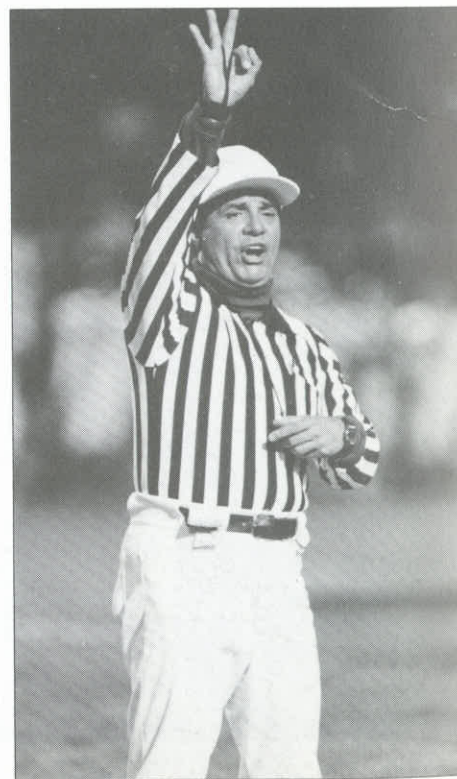
**16. STATEWIDE MARKETING --** Dr. Gary Smidderks, President of the Council, gave an overview of the progress of the State Marketing Management Committee.  
There being no further business to come before the Council, the meeting was adjourned at 12:10 p.m.

Submitted by

KAREN HELLYER  
CIF-SS ADMINISTRATOR

Approved by

DEAN CROWLEY  
ACTING COMMISSIONER



Submitted by

DEAN CROWLEY,  
ASSOCIATE COMMISSIONER

Approved by

STAN THOMAS,  
COMMISSIONER OF ATHLETICS

### EXECUTIVE - AUGUST 14

(Continued from page 4)

bursement guidelines for the CIF-SS Council. Following discussion, it was moved, seconded and passed to approve the guidelines as presented, effective with the 1993-94 school year.

**18. AYALA HIGH SCHOOL BASKETBALL FINANCIAL REPORT CONCERN --** After repeated attempts to resolve concerns relative to a basketball financial report submitted by Ayala High School, the Executive Committee directed Associate Commissioner Dean Crowley and Executive Committee member Paul Breit to meet with the principal of Ayala High School prior to the start of school in September, with a report to the Executive Committee at its next meeting.

**19. SIMI VALLEY HIGH SCHOOL REQUEST --** Following discussion, it was moved, seconded and passed to deny a request from Simi Valley High School to allow students from Simi Valley High School to participate on athletic teams at an adjacent school within the school district.

**20. NEW MEMBERSHIP --** It was moved, sec-

onded and passed to approve the membership of Price High School (Los Angeles), and Bethany Christian Academy of Long Beach, while Faith Christian High School in Riverside was placed on hold due to the lack of information available to the Executive Committee at this time.

There being no further business to come before the Executive Committee, the meeting was adjourned at 4:05 p.m.

Submitted by

DEAN CROWLEY,  
ASSOCIATE COMMISSIONER

Approved by

STAN THOMAS,  
COMMISSIONER OF ATHLETICS

## CIF SOUTHERN SECTION 1993 WATER POLO PLAYOFF RESULTS

### CIF SOUTHERN SECTION 1993 WATER POLO CHAMPIONS

DIVISION I  
El Toro

DIVISION II  
Riverside Poly

DIVISION III  
South Pasadena

DIVISION IV  
San Bernardino

#### DIVISION I

**First Round:** El Toro def. Long Beach Poly 20-5; Newport Harbor def. Crespi 15-11; Foothill def. Irvine 10-7; Long Beach Wilson def. University 18-5; Harvard-Westlake def. Santa Ana Valley 17-10; San Clemente def. Millikan 17-7; Capistrano Valley def. Villa Park 4-3 (OT); Corona del Mar def. Loyola 22-5.

**Second Round:** El Toro def. Newport Harbor 15-11; Long Beach Wilson def. Foothill 11-9; San Clemente def. Harvard-Westlake 7-5; Corona del Mar def. Capistrano Valley 15-5.

**Semifinals:** El Toro def. Long Beach Wilson 10-9; Corona del Mar def. San Clemente 8-5.

**Finals:** El Toro def. Corona del Mar 10-9 (OT).

#### DIVISION II

**First Round:** Riverside Poly def. Troy 28-5; California def. Ayala 12-6; Santa Maria def. Newbury Park 18-5; Crescenta Valley def. Edison 12-7; Marina def. Whittier 12-4; Royal def. San Luis Obispo 12-5; La Habra def. Montebello 10-8; Esperanza def. Glendale 15-3; Servite def. El Rancho 17-7; Bell Gardens def. Cypress 14-9; J.W. North def. Hoover 20-16; La Serna def. Buena Park 16-6; Rowland def. Fountain Valley 16-13; Los Alamitos def. Arlington 11-8; Agoura def. Righetti 16-13; Sunny Hills def. Alhambra 15-3.

**Second Round:** Riverside Poly def. California 16-5; Santa Maria def. Crescenta Valley 10-9; Royal def. Marina 8-7; Esperanza def. La Habra 9-7; Servite def. Bell Gardens 14-5; La Serna def. J.W. North 17-1; Rowland def. Los Alamitos 7-6 (OT); Sunny Hills def. Agoura 9-6.

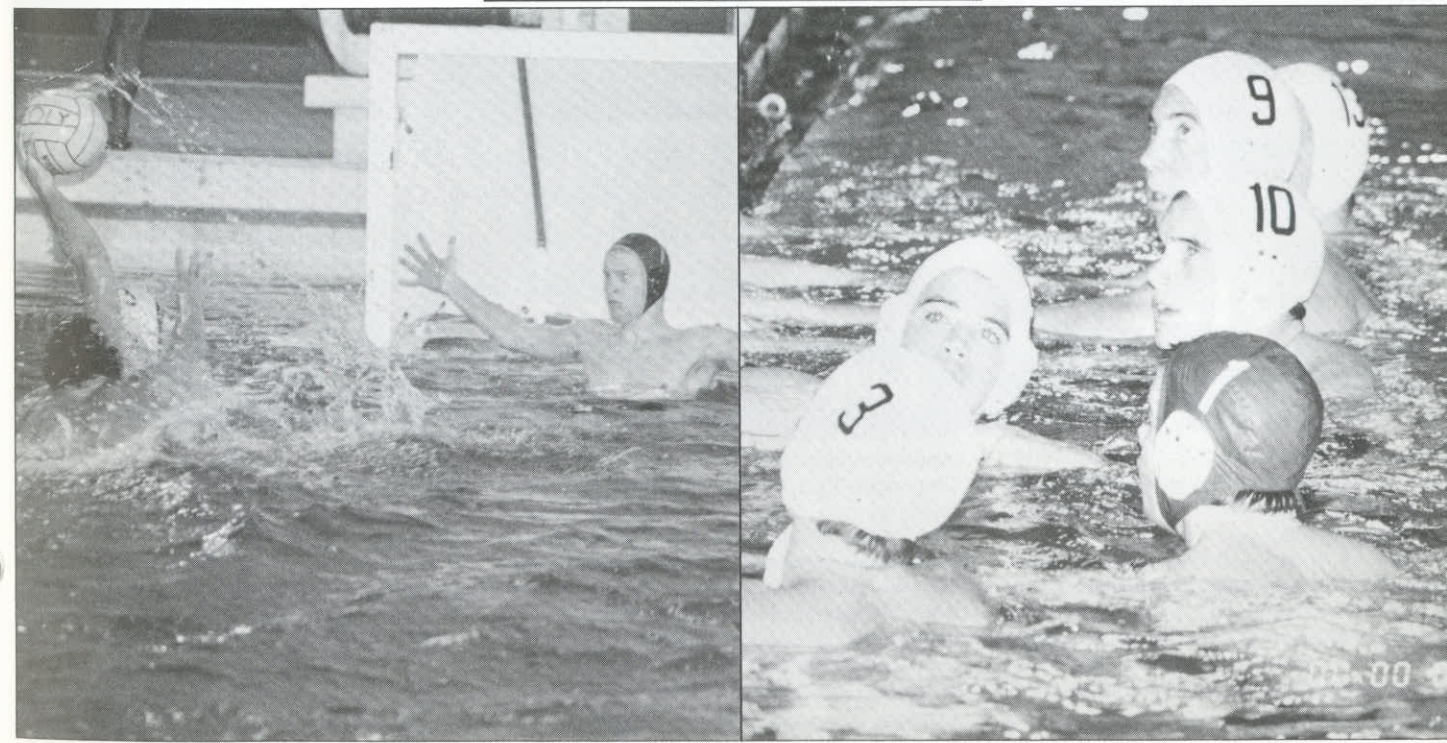
**Quarterfinals:** Riverside Poly def. Santa Maria 20-3; Esperanza def. Royal 15-8; La Serna def. Servite 10-9 (OT); Sunny Hills def. Rowland 9-6.

**Semifinals:** Riverside Poly def. Esperanza 15-14; Sunny Hills def. La Serna 10-6.

**Finals:** Riverside Poly def. Sunny Hills 9-5.

#### DIVISION III

**First Round:** South Pasadena def. Gahr 28-7;



Charter Oak def. Claremont/Claremont 14-5; Hemet def. Don Lugo 17-10; Brea Olinda def. Laguna Beach 7-6; Cabrillo def. La Canada 14-7; Trabuco Hills def. Peninsula 12-7; Los Altos def. Cerritos 12-11; Dos Pueblos def. El Segundo 18-3; Santa Barbara def. Santa Monica 22-2; Magnolia def. Downey 9-4; Palm Desert def. Upland 19-17; Mira Costa def. Valencia 16-5; Wilson/Hacienda Heights def. Estancia 15-7; San Marcos def. Santa Ynez 14-9; Temple City def. Redlands 14-13; Costa Mesa def. Western 20-5.

**Second Round:** South Pasadena def. Charter Oak 18-9; Brea Olinda def. Hemet 14-5; Trabuco Hills def. Cabrillo 14-13; Dos Pueblos def. Los Altos 14-13 (OT); Santa Barbara def. Magnolia 17-9; Mira Costa def. Palm Desert 7-6; San Marcos def. Wilson/Hacienda Heights 14-7; Costa Mesa def. Temple City 16-7.

**Quarterfinals:** South Pasadena def. Brea Olinda 15-5; Dos Pueblos def. Trabuco Hills 10-9; Santa Barbara def. Mira Costa 10-1; Costa Mesa def. San Marcos 11-9.

**Semifinals:** South Pasadena def. Dos Pueblos 11-10; Costa Mesa def. Santa Barbara 12-10.

**Finals:** South Pasadena def. Costa Mesa 12-11 (OT).

#### DIVISION IV

**Wild Card Round:** Bolsa Grande def. Whitney 14-9.

**First Round:** San Bernardino def. San Dimas 24-7; La Quinta def. Cate 16-4; Alta Loma def. La Puente 11-6; Chadwick def. Bolsa Grande 13-6; Los Amigos def. Pacific 14-6; Nordhoff def. Flintridge Prep 18-13; Jurupa Valley def. Etiwanda 16-4; Bonita def. Webb 17-5.

**Second Round:** San Bernardino def. La Quinta 26-7; Alta Loma def. Chadwick 10-7; Los Amigos def. Nordhoff 17-12; Bonita def. Jurupa Valley 6-5.

**Semifinals:** San Bernardino def. Alta Loma 18-10; Los Amigos def. Bonita 6-5.

**Finals:** San Bernardino def. Los Amigos 18-12.



## CIF SOUTHERN SECTION

# 1993 GIRLS TEAM TENNIS PLAYOFF RESULTS

### DIVISION I

**First Round:** Peninsula def. Santa Margarita 18-0; El Toro def. Westlake 9-9 (74-64); Santa Barbara def. Agoura 14-4; Corona del Mar def. Mater 10-8; Dana Hills def. Woodbridge 14-4; San Marcos def. Beverly Hills 10-8; Camarillo def. Dos Pueblos 15-3; Newport Harbor def. Mira Costa 16-2.  
**Quarterfinals:** Peninsula def. El Toro 17-1; Corona del Mar def. Santa Barbara 9-9 (84-67); San Marcos def. Dana Hills 10-8; Newport Harbor def. Camarillo 13-5.  
**Semifinals:** Peninsula def. Corona del Mar 15-3; Newport Harbor def. San Marcos 11-7.  
**Finals:** Peninsula def. Newport Harbor 15-3.

### DIVISION II

**First Round:** Laguna Beach def. Rowland 18-0; Rosary def. Keppel 11-7; Santa Monica def. Glendale 10-8; El Modena def. Victor Valley 13-5; Diamond Bar def. Temple City 15-3; Redlands def. Laguna Hills 16-2; San Marino def. Montebello 14-4; Calabasas def. Crescenta Valley 12-6; Edison def. Trabuco Hills 16-2; Villa Park def. Apple Valley 13-5; Marina def. North Torrance 11-7; Marymount def. Alhambra 13-5; Arcadia def. Torrance 14-4; La Canada def. Nogales 15-3; Estancia def. Canyon/Anaheim 12-6; Marlborough def. Fountain Valley 13-5.  
**Second Round:** Laguna Beach def. Rosary 14-4; El Modena def. Santa Monica 15-3; Diamond Bar def. Redlands 11-7; San Marino def. Calabasas 11-7; Edison def. Villa Park 9-9 (75-65); Marina def. Marymount 11-7; La Canada def. Arcadia 11-7; Marlborough def. Estancia 12-6.  
**Quarterfinals:** Laguna Beach def. El Modena 12-6; Diamond Bar def. San Marino 15-3; Edison def. Marina 11-7; Marlborough def. La Canada 13-5.  
**Semifinals:** Laguna Beach def. Diamond Bar 13-5; Edison def. Marlborough 10-8.  
**Finals:** Laguna Beach def. Edison 11-7.

### DIVISION III

**Wild Card Round:** Glendora def. Los Altos 11-7;

Sonora def. Jordan 10-8; Riverside Poly def. Brawley 14-4; Hart def. Chaminade 10-8.

**First Round:** Harvard-Westlake def. Glendora 16-2; Paramount def. Sonora 12-6; Valley View def. Charter Oak 10-8; Upland def. Fullerton 10-8; Centennial/Corona def. Central 10-8; Burbank def. Cerritos 16-2; Temecula Valley def. J.W. North 9-9 (78-65); El Dorado def. Long Beach Wilson 17-1; St. Lucy's def. Riverside Poly 15-3; Louisville def. Burroughs/Burbank 11-7; Esperanza def. Palm Desert 9-9 (84-83); Hemet def. Norco 13-5; Corona def. Arlington 13-5; Sunny Hills def. Wilson/Hacienda Heights 15-3; Long Beach Poly def. Lynwood 14-4; Los Alamitos def. Hart 18-0.  
**Second Round:** Harvard-Westlake def. Paramount 15-3; Upland def. Valley View 14-4; Centennial/Corona def. Burbank 12-6; El Dorado def. Temecula Valley 11-7; St. Lucy's def. Louisville 15-3; Hemet def. Esperanza 15-3; Sunny Hills def. Corona 11-7; Los Alamitos def. Long Beach Poly 11-7.  
**Quarterfinals:** Harvard-Westlake def. Upland 11-7; El Dorado def. Centennial/Corona 14-4; St. Lucy's def. Hemet 11-7; Los Alamitos def. Sunny Hills 11-7.  
**Semifinals:** Harvard-Westlake def. El Dorado 15-3; St. Lucy's def. Los Alamitos 9-9 (80-76).  
**Finals:** Harvard-Westlake def. St. Lucy's 13-5.

### DIVISION IV

**Wild Card Round:** St. Joseph/Santa Maria def. Lompoc 10-8; Los Amigos def. Brea Olinda 9-9 (81-77).  
**First Round:** Pasadena Poly def. Antelope Valley 18-0; La Mirada def. Santiago 12-6; Pacific def. El Monte 9-9 (80-75); Savanna def. San Jacinto 13-5; Cate def. St. Joseph/Santa Maria 12-6; Whittier def. Burroughs/Ridgecrest 12-6; Cabrillo def. Glenn 16-2; San Luis Obispo def. Arroyo 15-3; Quartz Hill def. Santa Fe 15-3; Santa Ynez def. Arroyo Grande 13-5; San Geronio def. Beaumont 14-4; Valencia def. Rosemead 17-1; La Serna

def. Los Amigos 10-8; Vivian Webb def. Murrieta Valley 16-2; La Quinta def. San Bernardino 16-2; Chadwick def. Bellflower 17-1.

**Second Round:** Pasadena Poly def. La Mirada 15-3; Savanna def. Pacific 12-6; Cate def. Whittier 14-4; Cabrillo def. San Luis Obispo 10-8; Santa Ynez def. Quartz Hill 9-9 (80-74); Valencia def. San Geronio 10-8; Vivian Webb def. La Serna 14-4; Chadwick def. La Quinta 12-6.  
**Quarterfinals:** Pasadena Poly def. Savanna 17-1; Cate def. Cabrillo 10-8; Valencia def. Santa Ynez 10-8; Chadwick def. Vivian Webb 10-8.  
**Semifinals:** Pasadena Poly def. Cate 17-1; Valencia def. Chadwick 9-9 (72-71).  
**Finals:** Pasadena Poly def. Valencia 13-5.

### DIVISION V

**First Round:** Gladstone Bye; Bonita def. Whittier Chr. 10-8; Alta Loma def. Yucca Valley 17-1; Rim of the World def. Mammoth 17-1; Yucaipa def. Northview 14-4; Cathedral City def. Chaffey 12-6; Orange Lutheran def. Ramona Convent 11-7; Brentwood def. Oak Park 17-1; Norte Vista Bye; Rancho Cucamonga def. Big Bear 9-9 (81-75); South Hills def. Azusa 16-2; Whitney def. Connelly 18-0; La Reina def. Nordhoff 14-4; Desert def. Marshall 9-9 (84-83); Sierra Vista def. Carpinteria 12-6; Crossroads Bye.  
**Second Round:** Gladstone def. Bonita 14-4; Rim of the World def. Alta Loma 11-7; Yucaipa def. Cathedral City 9-9 (77-67); Brentwood def. Orange Lutheran 18-0; Norte Vista def. Rancho Cucamonga 13-5; South Hills def. Whitney 10-8; La Reina def. Desert 18-0; Crossroads def. Sierra Vista 18-0.  
**Quarterfinals:** Gladstone def. Rim of the World 15-3; Brentwood def. Yucaipa 15-3; South Hills def. Norte Vista 9-9 (85-75); Crossroads def. La Reina 11-7.  
**Semifinals:** Brentwood def. Gladstone 13-5; Crossroads def. South Hills 9-9 (81-70).  
**Finals:** Crossroads def. Brentwood 10-8.

## CIF SOUTHERN SECTION

# 1993 GIRLS INDIVIDUAL TENNIS PLAYOFF RESULTS

### SINGLES

**First Round:** Amanda Augustus (Peninsula) def. Debbie Fultz (Pacific) 6-1, 6-0; Miki Kanemitso (Pasadena Poly) def. Kara Warkentin (San Marcos) 6-1, Retired; Brandi Freudenberg (El Modena) def. Jennifer Momii (Torrance) 6-2, 6-4; Stella Gonzales (Valencia) def. Brenda Beyronneau (Yucaipa) 6-1, 6-2; Laura Ruben (Mater Dei) def. Pilar Montgomery (Santa Barbara) 6-4, 5-7, 6-2; Monique Allegre (Camarillo) def. Gina Pelazini (Pacific) 6-3, 7-5; Violette Ahn (Beverly Hills) def. Faye De Vera (Villa Park) 6-3, 7-5; Pam Trump (Arcadia) def. Kate Callaghan (Marlborough) 6-4, 6-2.  
**Quarterfinal Round:** Amanda Augustus (Peninsula) def. Miki Kanemitso (Pasadena Poly) 6-0, 6-2; Brandi Freudenberg (El Modena) def. Stella Gonzales (Valencia) 6-3, 6-1; Monique Allegre (Camarillo) def. Laura Ruben (Mater Dei) 6-3, 3-6, 6-3; Pam Trump (Arcadia) def. Violette Ahn

(Beverly Hills) 7-5, 6-1.

**Semifinals:** Amanda Augustus (Peninsula) def. Brandi Freudenberg (El Modena) 6-3, 6-3; Pam Trump (Arcadia) def. Monique Allegre (Camarillo) 6-3, 7-5.

**Finals:** Amanda Augustus (Peninsula) def. Pam Trump (Arcadia) 6-3, 6-4.

### DOUBLES

**First Round:** Nicole London/Amber Basica (Peninsula) def. Kim Basham/Lavinia Secore (San Geronio) 6-3, 6-2; Terri Heite/Sally Polkinghorn (Marymount) def. Amy Medlin/Holli Freudenberg (El Modena) 7-6 (7-0), 7-6 (11-9); Jessica Improta/Danielle Ouwendijk (Rio Mesa) def. Kelly Foster/Tami Demaree (Edison) 6-3, 6-3; Shera Weigler/Deborah Pepkowitz (Calabasas) def. Susie Baker/Sheila Lee (La Mirada) 6-2, 6-1; Jenny Cohen/Allyson Reeves (Peninsula) def. Tara Irving/Michelle Ravela (Diamond Bar) 6-0,

6-0; Janaye Johnson/Kate Kunata (El Toro) def. Neetu Manjunath/Jackie Jocson (St. Lucy's) 6-3, 7-5; Leanne Biehl/Cindy Brumfield (Santa Barbara) def. Jennifer Yuan/Andrea Hsu (San Marino) 6-2, 6-1; Mara Colazzi/Sarah Hawkins (Newport Harbor) def. Fabi Talamontes/Sandy Tapia (Gladstone) 6-1, 6-1.

**Quarterfinals:** London/Basica (Peninsula) def. Heite/Polkinghorn (Marymount) 6-0, 6-2; Improta/Ouwendijk (Rio Mesa) def. Weigler/Pepkowitz (Calabasas) 6-2, 6-4; Cohen/Reeves (Peninsula) def. Johnson/Kunata (El Toro) 6-3, 7-6 (10-8); Colazzi/Hawkins (Newport Harbor) def. Biehl/Brumfield (Santa Barbara) 5-7, 6-3, 7-5.

**Semifinals:** London/Basica (Peninsula) def. Improta/Ouwendijk (Rio Mesa) 6-0, 6-2; Colazzi/Hawkins (Newport Harbor) def. Cohen/Reeves (Peninsula) 6-2, 4-6, 6-2.

**Finals:** London/Basica (Peninsula) def. Colazzi/Hawkins (Newport Harbor) 6-4, 6-3.