



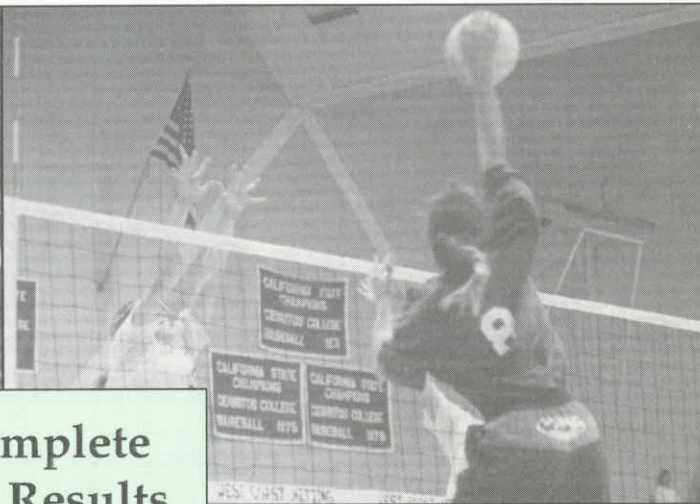
SOUTHERN SECTION

CIF-SS BULLETIN



VOL. 55, NO. 2

WINTER 1992 1993



**For Complete
Playoff Results**
See pages 12 through 19.



REEBOK, PRIMARY TITLE SPONSOR STATE-WIDE

PEPSI, OFFICIAL SPONSOR STATE-WIDE

**PAC X TEL
CELLULAR**

Wilson
The Official Ball . . .

See PAC TEL CELLULAR page 3.

*Serving High School Athletics
Since 1913*

Photos courtesy of Al. Martini/Sen. Sport Photography.

COMMISSIONER'S CORNER



RELEAGUING

By Stan Thomas
Commissioner of Athletics

Each of the 70 member leagues belonging to the CIF Southern Section are recommended to produce and distribute to each of their member schools, a league constitution, outlining the policies and by-laws which govern league competition.

Because the CIF-SS constitution requires releaguering every two years (which, by action of the Council, changes to a four-year cycle in 1994) and with this being the first year of the new cycle, many schools have become new members of an established league, or have joined a new league altogether. In relation to this subject, please ask yourself the following questions: Has your league produced and/or updated its constitution and by-laws recently? Has your league supplied copies of the constitution to the principal and athletic director(s) of each member school? Are you, as an administrator or coach, familiar with your league constitution?

The league constitution should cover a broad spectrum of contingencies and/or policies that might help to sort out an uncommon, unforeseeable or unavoidable occurrence that would affect the outcome of a league contest, the final league standings or playoff entries. An example of this would be the inclement weather that occurred last year to affect the completion of the soccer season in several leagues. Another potentiality would be imminent danger of disruptive violence, which could cause the postponement or cancellation of one or more league contests. Is your school prepared to meet the challenge of such an occurrence? If the completion of league competition is affected, is your league prepared to rule on such an incident? Will that decision be based upon a pre-determined and published course of action, as accepted by the league membership, or will it be made emotionally on the spur of the moment, without clear and concise resolution?

The concept of perceived violence, which may or may not indicate an impending danger to student participants or spectators, will forever be the toughest call in interscho-

See COMMISSIONER'S CORNER page 5.

CIF-SS COUNCIL MEETING MINUTES September 17, 1992

The September meeting of the CIF-SS Council was called to order by Dr. Gary Smidderks at 9:10 a.m. on Thursday, September 17, 1992 at the Sequoia Athletic Club in Buena Park. All leagues were present with the exception of the Delphic, Sunrise, Victory and Westside.

- 1. MINUTES** -- It was moved, seconded and passed to approve the minutes of the CIF-SS Council meeting of April 30, the minutes of the CIF-SS Executive Committee meeting of June 19; and the minutes of the CIF-SS Executive Committee meeting of August 8, 1992.
- 2. AAF** -- Administrator Karen Hellyer reviewed background information and progress of the AAF soccer coaching education program.
- 3. MOUNTAIN VIEW LEAGUE FOOTBALL PROPOSAL** -- Dave DiPaolo, Principal of Norco HS, representing the Mountain View League, presented a proposal recommending that in the sport of football at the conclusion of a contest, teams will have the option of exchanging handshakes and be immediately escorted from the field of play by members of the coaching staff. Post-game celebrations or activity are not to take place on or in the facility. Following discussion, it was recommended that the Commissioner bring this item to the Blue Book Committee for further study and recommendation.
- 4. ANDROGENIC/ANABOLIC STEROIDS** -

STATE CONSTITUTION ARTICLE 5, SECTION 524 -- Dr. Gary Smidderks presented information on this item that will be voted on at the State Federated Council meeting in October. Following discussion, it was moved, seconded and passed to direct the Southern Section delegates to the State Federated Council to support this provision in the State constitution that will require school boards to develop policies regarding the use and abuse of androgenic/anabolic steroids and other performance enhancing substances.

5. CIF-SS/LA CITY SECTION REEBOK FOOTBALL GAME PROTOCOL -- Dr. Gary Smidderks discussed the protocol with the Council in reference to the post-season Reebok football game between the CIF-SS Division I champion and the LA City Section champion. Following discussion, it was moved, seconded and passed to propose for the first game only, a 50/50 net split between the Southern Section and the LA City Section, with the State CIF paying all expenses, which would have been their net share of the contest, and that game management authority be under the auspices of the Southern Section Executive Committee. It should be noted that this approval is for the 1992 contest only.

6. GIRLS POLE VAULT -- Associate Commissioner Dean Crowley reviewed a State proposal

See CIF-SS COUNCIL MEETING page 19.

California Interscholastic Federation Southern Section

11011 Artesia Blvd. (90701) -- P.O. Box 488 (90702)
Cerritos, California
(310) 860-2414 -- (714) 826-5390 -- FAX (310) 860-1692

OFFICERS

Dr. Gary Smidderks, Superintendent/Principal
Los Angeles Baptist High School, President

Dr. Tom Jacobson, Principal
Corona Del Mar High School, Past-President

Dr. Ken Gunn, Principal
Walnut High School, President-Elect

Tom Triggs, Principal
La Habra High School, Treasurer/Orange County Rep.

Stan Thomas, Commissioner of Athletics

BULLETIN EDITOR
Rhonda Frazier, CIF-SS Desktop Publicist
EDITORIAL ASSISTANT
Sharon Hargrove, CIF-SS Secretary

Bulletin Published Four Times Yearly By CIF Southern Section

PAC TEL CELLULAR JOINS CIF-SS SPONSORSHIP TEAM WILSON SPORTING GOODS CONTINUES VALUABLE SUPPORT

The CIF-SS is proud to welcome PacTel Cellular as the newest member to the corporate sponsorship team. PacTel Cellular has signed a three year contract as the "Official telecommunication system of the CIF Southern Section."

As a corporate sponsor, the Irvine based company will be recognized through program advertisements, display of banners, public address announcements, and recognition on additional promotional materials relating to playoffs in championship events.

"PacTel firmly believes in supporting California's secondary schools and their vital extracurricular programs," notes Conley Smith, Manager, Advertising and Communications for PacTel Cellular. "To that end, we extend our appreciation and praise to the CIF Southern Section - an organization that adds true depth experience and value to the lives of our future leaders."

Wilson Sporting Goods has been recog-



nized as the "Official Game Ball" of the CIF Southern Section for the past ten years. Wilson's support to area high school athletes includes distribution of complimentary balls to section finalists in football, boys' and girls' basketball, boys' and girls' volleyball, boys' and girls' soccer, boys' and girls' tennis, baseball and softball.

"Wilson's sponsorship of high schools and athletics began in the CIF Southern Section and has led to current involvement in ten state wide programs," says John McGovern, L.A. Division Sales Manager. "Wilson is proud of its service to Southern Section schools and appreciates their continued support of Wilson sports equipment."

From the CIF Southern Section point of view, successful maintenance of corporate sponsorship programs is crucial. Corporate sponsorship plays a major roll in keeping Southern Section membership dues among

See CORPORATE SUPPORT page 15.

SOUTHERN SECTION DEFEATS L.A. CITY SECTION IN FIRST EVER CIF/REEBOK BOWL

The inaugural CIF/Reebok Bowl, pitting the major -division football champions of the CIF Southern and Los Angeles City Sections, was played at Anaheim Stadium on December 18, with the Southern Section representative -- Bishop Amat High of La Puente-- scoring an impressive 31-10 victory over Sylmar before a crowd of 8,132.

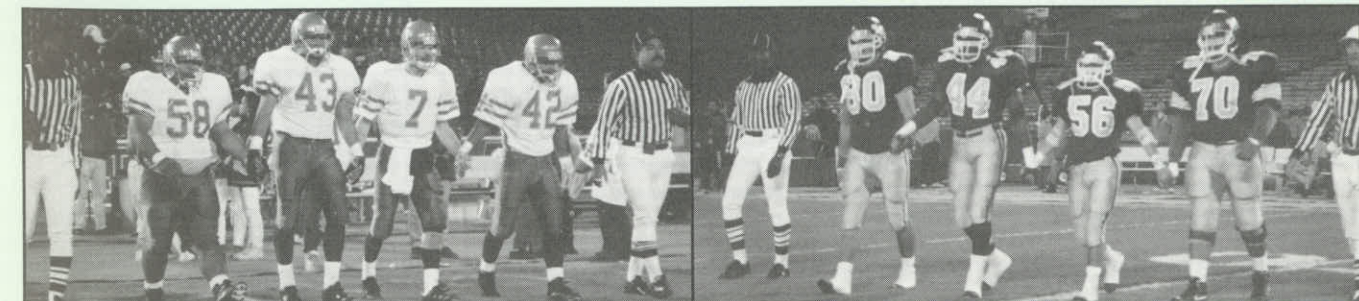
The contest marked the first time ever for the Southern and L.A. City Section grid champions to meet in a post-season game. The two organizations started out as one when the CIF Southern Section was founded in 1913, but parted company in 1934, when the member schools of the Los Angeles Unified School District formed their own CIF section.

Bishop Amat qualified for the contest by winning the Southern Section Division I title in a hard-fought 7-3 win over Del Rey League-rival Loyola. Under coach Mark Paredes, the undefeated Lancers became the state's first-ever team to post a 15-0 record, to arguably rank among the best teams in California prep football history. Sylmar, which also entered the contest undefeated (13-0), earned its Reebok Bowl berth with a 17-0 win over perennial-power Carson in the L.A. City 4-A Division title game.

After a rocky first period, in which Bishop Amat was limited to two first downs and was pinned deep in its own territory, the Lancers took charge of the game with 24 unanswered points in the second quarter. Quarterback Mike Smith --later honored as the game's Most Valuable Player--connected on touchdown passes of 67 yards to Daylon McCutcheon and 49 yards to Trevor Woods to break the scoreless tie. A nine-yard scoring run by Lancer -runningback Rodney Sermons and a 38-yard field goal by Jeff Banks gave Bishop Amat a commanding 24-0 halftime margin.

In the third quarter, the Lancers both added to their lead and closed out their scoring when Randy Guanko ran 11 yards for a touchdown at the 9:20 mark. Following banks' conversion, the Bishop Amat lead was 31-0. Sylmar got on the board twice in the fourth period, as Robert Camacho booted a 41-yard field goal, followed by a 13-yard touchdown run by quarterback Deon Price.

The contest was carried live and in prime time by KCOP-television (Channel 13) of Los Angeles, which reported that over 250,000 households in Southern California had tuned-in at sometime during the game.



BISHOP AMAT AND SYLMAR go head to head in the first ever CIF/Reebok Bowl.

Photos courtesy of Al Martin/San Sport Photography.

MINUTES OF THE EXECUTIVE COMMITTEE MEETING

August 8, 1992

The August meeting of the CIF-SS Executive Committee was called to order by President Dr. Gary Smidderks at 8:50 a.m. on Saturday, August 8, 1992. All members were present with the exception of Fr. William Brelsford, Dr. James Fleming, Dr. Ron Franklin, and Dr. Robert Packer.

1. **MINUTES** -- It was moved, seconded and passed to approve the minutes of the CIF-SS Executive Committee meeting of June 19, 1992, as corrected. It should be noted under "President's Update" that Paul Breit is the Mt. San Antonio Area Representative, not the Foothill League representative.

2. **PRESIDENT'S UPDATE** -- President Dr. Gary Smidderks welcomed the Committee to the first meeting of the 1992-93 school year and extended a special welcome to new members Donna Gunstream, El Monte HS, Girls' AD Representative, and Paul Breit, Principal, Garey HS, Mt. San Antonio Area Representative. Dr. Smidderks discussed with the Committee their role as Executive Committee members and the importance of attendance at all meetings, to include Executive Committee and Council. He reported on the July Administrative Committee meeting and a meeting held with Dr. Larry Maw, Superintendent of the Elsinore Union HS District. He announced with regret, the passing of former Executive Committee member and principal of Palmdale HS, Jim Carmichael.

3. **COMMISSIONER'S UPDATE** -- Commissioner Stan Thomas reviewed with the Committee the office goals and objectives for the 1992-93 school year. Following discussion, with reference to baseball incidents which were discussed extensively at the June, 1992 Executive Committee meeting, it was the decision of the Committee to direct the Office to send follow-up letters regarding serious incidents to the school principal and to superintendents only, rather than school board president, as the superintendent serves as secretary to the Board of Education. The purpose of this action is to keep superintendents and Boards fully informed.

Additionally, Commissioner Thomas discussed the KCOP football game to be played in December between the L.A. City Section and the CIF-SS champions. The protocol of the contest (financial policy) was discussed at length. The CIF-SS will be recommending a 45-45-10 split of income, and it will be further recommended to the Southern Section Council at the September, 1992 meeting to allow the Executive Committee to make all management decisions regarding the contract.

Commissioner Thomas stressed with the Committee the importance of making a concerted effort to keep superintendents informed as to the day to day operation of the Southern Section. The sharing of information from principal to superintendent to Board members is a vital function of the communication key.

A lengthy discussion was held on the proposed relocation of the CIF-SS Office.

4. **APPOINTMENT OF ATHLETIC DIRECTOR REPRESENTATIVE** -- Due to the elimination of the Athletic Director position at Coachella Valley HS, it was moved, seconded and passed to appoint Donn Clickard, A.D. at Atascadero HS, to fill the position vacated by Rich Ramirez. This appointment will be in place until the end of the

current school year, when an election will be held.

5. **MORNINGSIDE HS ELIGIBILITY REVIEW** -- Superintendent Dr. George McKenna, Inglewood HS District, and Morningside Principal Dr. Lisa Daniels, reviewed with the Committee the use of an ineligible student-athlete in the sport of football during the 1992-93 season. Following discussion, it was moved, seconded and passed to approve the same conditions and guidelines as imposed upon Inglewood HS--

1. Morningside HS will be placed on probation for the 1992-93 school year;

2. Morningside HS students will be expected to demonstrate appropriate behavior;

3. Morningside HS will relinquish the 1992 football championship;

4. Morningside HS will develop specific guidelines with reference to eligibility checks;

5. CIF-SS staff will develop an audit procedure relative to student eligibility at Morningside HS;

6. A report will be forthcoming from the school relative to the implementation of procedures by the administration regarding all phases of student eligibility;

7. Failure to comply with any of the above stipulations will result in no playoff activity in the sport of football for the 1992 season;

8. Temecula Valley HS, the runner-up, will be declared the 1992 Division VIII champion, and Morningside HS will bear the cost of new medals and patches which will be presented, along with the championship trophy, to Temecula Valley HS at a later date.

6. **AREA REPRESENTATIVE REPORTS** -- Executive Committee Area Representatives reported on the importance of communication and the role of the Executive Committee in contacting principals and league presidents in their respective areas. It was noted that there are some concerns regarding geographical realignment, particularly with the growth in the Inland Empire area and the northern part of the Foothill area. Continued concerns were expressed regarding State budget and the financial impact being faced by member schools.

7. **TREASURER'S REPORT** -- Tom Triggs, treasurer, updated the Committee on income from the spring playoffs, the CIF-SS golf tournament, and the year-end T-shirt sales report. It should be noted that the yearly audit report was not completed at this time.

8. **NATIONAL FEDERATION SUMMER MEETING REPORT** -- Tom Triggs reported on the National Federation summer meeting held in Ft. Lauderdale, Florida. It should be noted that the National Federation's Executive Director Brice Durbin submitted his resignation at this meeting, effective January 1, 1993.

9. **LEGAL UPDATE** -- Attorney Andy Patterson reviewed a motion that will be presented to the courts on August 14 regarding Canyon HS and reviewed the Inglewood and Morningside HS eligibility cases. He also expressed concern with regard to the escalating costs of litigation statewide.

10. **STATE CIF REPORT** -- Dr. Gary Smidderks reported on the State CIF marketing management program and Dr. Ken Gunn discussed the State CIF strategic planning with the Committee.

11. **ORANGE COUNTY UPDATE** -- Tom Triggs

reviewed correspondence from Dr. James Fleming, Superintendent Placentia Unified, and Michael Miller, Superintendent Los Alamitos Unified, to State CIF Commissioner Thomas Byrnes with reference to the formation of an Orange County Section.

12. **NEW MEMBERS** -- It was moved, seconded and passed to approve membership for the following schools:

LONG BEACH YOUTH HOME -- approved for freelance status for the 1992-93 school year.

FRAZIER MOUNTAIN HS (LEBEC) -- approved for the 1994-95 school year, with geographical placement to be determined by the geographical placement committee.

An application for membership for CETYS School, Mexicali, Mexico, was denied.

There being no further business to come before the Committee, the meeting was adjourned at 3:10 p.m.

Submitted by

DEAN CROWLEY,
ASSOCIATE COMMISSIONER

Approved by

STAN THOMAS,
COMMISSIONER OF ATHLETICS

REMINDER:

NEW 909 AREA CODE

On November 14, GTE California, Pacific Bell, and Contel split the 714 area code perimeters in order to add a new 909 area code. This new 909 area code affected the following prefixes: 242-247, 272-279, 335-338, 343, 350-360, 369-371, 381-384, 386-399, 420-425, 427-428, 431, 460-469, 477, 482-483, 485-488, 584-585, 590-599, 602, 620-629, 652-659, 672, 674, 676-679, 681-689, 694-699, 710, 734-737, 763, 765-767, 769, 780-785, 787-799, 820, 822-825, 829, 845, 849, 860-862, 864-869, 872-878, 880-889, 899, 920, 922-931, 933, 940-949, 980-989.

To assist callers in this transition, both the old and new numbers still work and will continue to work in placing calls up until August 13, 1993. However, callers are encouraged to begin using the new area code as soon as possible.

MINUTES OF THE EXECUTIVE COMMITTEE MEETING

October 21, 1992

The October meeting of the CIF-SS Executive Committee was called to order by President Dr. Gary Smidderks at 1:05 p.m. on Wednesday, October 21, 1992 at the CIF-SS Office. All members were present with the exception of Andy Patterson.

1. **PRESIDENT'S UPDATE** -- Dr. Gary Smidderks welcomed Superintendents Representative Ron Franklin and newly-appointed Boys' Athletic Directors' Representative Donn Clickard to the Committee. Additionally, Dr. Smidderks discussed with the Committee the National Federation Section 7/8 Meeting and recent violence affecting member schools.

2. **COMMISSIONER'S UPDATE** -- Commissioner Stan Thomas reviewed with the Committee the staff in-service held with Inglewood, Morningside and Santa Barbara High Schools, all of which are currently on probation. Commissioner Thomas announced he will be meeting with county superintendents during the upcoming months. Additionally, he reported on the Mentors' Workshops presented by Michael Radford and the Yuma, Arizona schools' interest in participating with schools in the Coachella Valley.

3. **HEMET HIGH SCHOOL ELIGIBILITY QUESTION** -- Mr. Dick Glock, Principal of Hemet High School, and Mr. Ron Livesay, Administrator at Baptist Christian High School, Hemet, were in attendance to discuss concerns relative to recent transfers from Baptist Christian to Hemet High School.

4. **WESTLAKE HIGH SCHOOL DIVING QUESTION** -- Mrs. Julie Wells appeared before the Committee requesting a waiver permitting her son, Ryan Wells, a student at Westlake High School, to dive with the Westlake High School diving coach pre and post season, and after regular school hours. Following discussion, it was moved, seconded and passed to allow for a waiver of Rule 309 (association rule) for the 1992-93 school year only, as long as the time frame is the same as other regular physical education classes held by Westlake High School.

5. **CHARITY FOOTBALL GAME** -- Dr. Melvin Hayashi presented a proposal with reference to a

one time charity football game to be played by a high school from the island of Kauai against a high school in the Canejo Valley. The main purpose of the contest would be to give the students on the Island of Kauai an opportunity to participate in this out of season activity due to the many problems caused by Hurricane Inichi. Following discussion, it was moved, seconded and passed to approve this one time activity for Thanksgiving weekend as long as all CIF rules and regulations are followed, that league approval is given, that the name of the contest be approved by the Commissioner, and that the selection of the participating team be made by the Marmonte League. Additionally, the Southern Section Executive Committee recognizes that this exception should be a Council decision.

6. **STATE RESTRUCTURING OF LEGAL SERVICES** -- Dr. Robert Packer discussed with the Committee an agenda item for the upcoming State Federated Council CIF meeting to be held on October 30 in San Diego. The State CIF Executive Committee believes that they have an unparalleled opportunity, through restructuring its legal division, to effect not only cost saving but effectiveness of services to the organization. It is the intention of the Committee, with State CIF Federated Council approval, to employ Andy Patterson as general counsel to the CIF as an employee of the organization. Following discussion, it was moved, seconded and passed to send the CIF Southern Section delegates to the State Federated Council in support of this proposal.

7. **AREA REPRESENTATIVES REPORTS** -- The Executive Committee Area Representatives reported on transportation/financial concerns, league configurations with the problems created by 5 and 7 team leagues having byes during the league play, game management, and the possibility of school districts dropping sports during the second semester due to the impact of the state financial crisis. It should be noted that in the area where schools are charging fees, participation is

down.

8. **BOYS ATHLETIC DIRECTORS' REPRESENTATIVE UPDATE** -- Donn Clickard expressed his appreciation to the Executive Committee for their confidence in appointing him to fill the term of Rich Ramirez, and he updated the Committee on a letter being sent to all athletic directors in the Section in order that he and Donna Gunstream, Girls' Athletic Directors' Representative, might work toward a goal of improving communications between athletic directors and the Executive Committee.

9. **GIRLS ATHLETIC DIRECTORS' REPRESENTATIVE UPDATE** -- Donna Gunstream reported on her recent attendance at the Foothill/Citrus Athletic Directors meeting.

10. **TREASURER'S REPORT** -- Tom Triggs, Treasurer, reviewed with the Committee the final audit and updated them on the current status of the CIF-SS building. Additionally, along with Shirley Frazier, CIF-SS Director of Budget and Finance, the current CIF-SS working budget was reviewed and various decisions were made relevant to budgetary planning for the future.

11. **STATE CIF** -- Dr. Ken Gunn and Dr. Gary Smidderks reported on strategic planning and marketing management, on-going items at the State level.

12. **KCOP/CHANNEL 13 FOOTBALL GAME** -- Administrator Bill Clark updated the Committee on the Reebok Bowl, which will be played on Friday, December 18, at Anaheim Stadium between the CIF-SS Division I Champion and the Los Angeles City CIF Champion.

There being no further business to come before the Committee, the meeting adjourned at 6:05 p.m.

Submitted by

DEAN CROWLEY,
ASSOCIATE COMMISSIONER

Approved by

STAN THOMAS,
COMMISSIONER OF ATHLETICS

COMMISSIONER'S CORNER

(Continued from page 2.)

lastic athletics. Should the game be played at the risk of serious incident? Should we allow a negative outside influence to dictate when, where or if our contest should be played?

When schools experience this negative activity, you can bet that boards of education, superintendents, principals and law-enforcement officials will become involved. The outcome of such collective decision has varied, but in all cases, the league constitution should provide the final authority, as it relates to a plan that would prevent, rather than react, to an event of this nature.

Does your school have an adequate security plan, with proper supervision for all interscholastic athletic contests, and especially night games? Our suggestion is, it is in the best interest of all concerned, if the league constitution addressed the issue of crowd control and security, to provide uniform and consistent standards for all members. Should your league take these steps, or have an experience of this nature to share, our office would appreciate a review in writing, so that it may be passed on to our entire membership. I am certain there are many schools that have dealt with this growing problem in a fair and professional manner. Certainly, others could benefit from this experience.

When a negative influence forces the cancellation of one or our contests, at any level, a severe problem exists that must be dealt with swiftly and efficiently. Interscholastic athletics, after all, are intended to be a positive benefit for our kids and communities. The general attitude of the CIF-SS Executive Committee has been to never allow an outside group to curtail a co-curricular activity in a negative manner.

It is therefore recommended, that your league address this issue and develop a plan of action to prevent chaos after the fact, when stress levels are running high. Please send a review of your experiences and ideas to the attention of my secretary, Kay Larsen. By doing so, we will be afforded the opportunity to compile and provide, for all member schools, documentation in the development of safety and security plans.

MINUTES OF THE EXECUTIVE COMMITTEE MEETING

November 24, 1992

The November meeting of the CIF-SS Executive Committee was called to order by President Dr. Gary Smidderks at 1:15 p.m. on Tuesday, November 24, 1992 at the CIF-SS Offices. All members were present.

1. **MINUTES** -- It was moved, seconded and passed to approve the minutes of the CIF-SS Executive Committee meeting of October 21, 1992.

2. **PRESIDENT'S UPDATE** -- Dr. Gary Smidderks reviewed with the Committee the ACSA letter relating to concerns with the status of athletics in the high schools. Additionally he reviewed communication from the Yuma, Arizona schools with reference to competition with schools in the desert area. It should be noted that the Yuma schools have decided to abandon their attempt to participate in a league setting with California schools at this time.

3. **COMMISSIONER'S UPDATE** -- Commissioner Stan Thomas updated the Committee on his meetings with County superintendents and Southern Section staff visits to league meetings. Additionally, the Committee reviewed and discussed financial considerations for the current 1992-93 and the upcoming 1993-94 school year.

4. **AREA REPRESENTATIVE REPORTS** -- The Executive Committee Area Representatives stressed the importance of leagues reviewing their constitutions to be sure they deal with cancelled or postponed games. Other items of discussion were area placement concerns, the Reebok Bowl game, playoffs, and transportation financial implications.

5. **SUPERINTENDENTS' UPDATE** -- Ron Franklin, Southern Section Superintendents' Representative, and State Superintendents Representative Jim Fleming discussed concerns relative to HIV prevention; the current status of relegating and area placement; and an update on the work being done in Orange County relative to the for-

mation of an Orange County Section.

6. **TREASURER'S REPORT** -- Tom Triggs, Treasurer, reviewed with the committee a list of schools currently delinquent in payment of dues for the 1992-93 school year. The CIF-SS Council, at their meeting of January 21, will consider dropping delinquent schools from membership. Currently, the following schools have outstanding dues: Ambassador Christian, Anaheim, Baptist Christian, N., Bell Gardens, Bundy Canyon Christian, Cantwell/Sacred Heart, Centennial, Compton, Chaffey, Channel Islands, Cuyama Valley, Edison, Gahr, Glendale Adventist, Grace Brethren, Leuzinger, Life Christian, LB Youth Home, Lutheran, LaVerne, Mesrobian, Monrovia, Morningside, Oak Grove Institute, Oak Hill, Oakwood, Owens Valley, Oxnard, Palm Springs Christian, Pomona, Rancho Verde, Rolling Hills Prep, Savanna, South El Monte, Stoneridge Prep, Ventura County Christian, Vivian Webb, Webb, Westminster.

7. **LEGAL UPDATE** -- Attorney Andy Patterson reviewed pending litigation.

8. **STATE CIF REPORT** -- Past CIF President Dr. Robert Packer reviewed highlights of the October Federated Council meeting which included a vote to amend article 17 dealing with the sport of wrestling, and the approval for the employment of a CIF general counsel to handle all State CIF litigation, and the approval of a modification of Bylaw 1501 permitting girls to pole vault. Other items under discussion were a proposal on anabolic and androgenic steroids, and activities of the marketing management committee and strategic planning group.

9. **STRATEGIC PLANNING/MARKETING MANAGEMENT UPDATE** -- Dr. Ken Gunn and Dr. Gary Smidderks reported on progress at the State level in the area of market manage-

ment. A marketing agency will be selected to represent the State in late December to market and secure corporate sponsors for the State CIF. The ongoing work of the strategic planning committee was reviewed.

10. **KCOP/CHANNEL 13 REEBOK BOWL** -- Administrator Bill Clark reviewed with the Committee the progress and current status of the Reebok Bowl game set for Friday, December 18 between the Southern Section champion and the LA City Champion.

11. **FALL PLAYOFF REPORT** -- Associate Commissioner Dean Crowley and Administrator Bill Clark reported on the fall playoffs in the sports of football, boys and girls cross country, girls' volleyball, girls' tennis and water polo.

12. **SCHOOL VIOLENCE** -- President Dr. Gary Smidderks led a discussion relative to concerns of school violence.

13. **NEW SCHOOL MEMBERSHIP** -- It was moved, seconded and passed to approve membership for Aliso Niguel High School in the Capistrano Valley Unified School District, with an opening set for September, 1993 for 9th and 10th graders only. The current plan calls for Aliso Niguel to freelance for the 1993-94 school year.

There being no further business to come before the Committee, the meeting was adjourned at 4:30 p.m.

Submitted by

DEAN CROWLEY,
ASSOCIATE COMMISSIONER

Approved by

STAN THOMAS,
COMMISSIONER OF ATHLETICS

CLICKARD REPLACES RAMIREZ AS EXECUTIVE COMMITTEE ATHLETIC DIRECTOR REPRESENTATIVE

Donn Clickard, Athletic Director at Atascadero High School, has been appointed to replace Richard Ramirez as the current Athletic Director Representative to the CIF-SS Executive Committee. Clickard has been involved in the Atascadero High School athletic program since 1972. Acting as both Athletic Director and Resource Specialist, he has been actively involved in school activities.

Clickard has been Chairman to the Special Education Department, Head Class Advisor to the classes of 1973, 1977, 1984, and 1992, and Varsity Football Assistant Coach from 1970-1979.

With a B.A. degree in Recreation Administration from Sacramento State College and a Master of Science degree in Physical Education from Cal Poly, San Luis Obispo, Clickard has been of service to the city of Atascadero in many ways throughout his career. He has been a member of the Park and Recreation Committee, Director of the Chamber of Commerce, Campaign Manager for three city wide

elections, and a volunteer and guest speaker for several events.

On a much broader level, Clickard is also a member of the California State Ath-



DONN CLICKARD

letic Directors' Association, the National Federation Interscholastic Coaches' Association, and the National Interscholastic Athletic Administrators' Association. In addition, he has been a presenter at three

CIF Southern Section Athletic Directors Symposiums.

He was named Professional Man of the Year in 1984 by the Atascadero Chamber of Commerce and has been named a National Interscholastic Athletic Administrators' Association Certified Athletic Administrator.

As a part of the CIF-SS, Clickard has acted as a member of the Relegating Committee, the Athletic Injury Committee, and the Safety Committee.

Throughout his career, Clickard has played a part in developing numerous athletic programs including a program of Athletic Excellence Recognition, a community supported sponsorship and scholarship program, a safety and medical plan which has received national attention, and a partnership between the athletic department and the Small Business Ownership class called Project Enterprise.

In addition, he has served as Tournament Director/Meet Manager at many invitationals and meets.

13th ANNUAL ATHLETIC ADMINISTRATORS SYMPOSIUM: MEETING NEW CHALLENGES WITH NEW IDEAS

"We need to come together on occasions such as this to share ideas and to gain new ideas as we face the challenge of the 90's," remarked retired USMC Col. Gene Harrison, opening speaker at the 13th annual CIF-SS Athletic Administrators Symposium held October 22 at the Sequoia Athletic Club in Buena Park. Approximately 350 school administrators, athletic directors, and athletic secretaries attended this year's symposium, entitled "Meeting New Challenges With New Ideas."

Others in attendance included Executive Committee members Dr. Robert Packer, Tom Triggs, Donna Gunstream, Ron Franklin and Maureen Sanders as well as CIF-SS staff and approximately 23 vendor representatives.

"We feel it's an honor to be here," said Ron Carpenter of Wilson Sporting Goods. "CIF does a lot for Wilson and Wilson tries to do a lot for CIF."

"It's an opportunity to see a lot of people in a short time," stated Chris Jones of Caddisak.

"I cannot think of anyone that does more for building teams, and Lord knows we need it, than the CIF," said Col. Harrison.

Twelve guest speakers presented various workshops as well, on topics ranging from NCAA legislation to litigation, eligibility, care for the student/athlete, year-round schools, time management, trends in fund raising, the female-athlete, administrator/coach relationships, the *Blue Book*, how to keep programs alive, and financial management of the playoffs. Those presenting the workshops included Chris Schoemann, Legislative Assistant, NCAA; Andy Patterson, CIF-SS Counsel; Dean Crowley, Associate Commissioner, CIF-SS; Jim Clover, ATC Coordinator, The Sport Clinic-Riverside; Hal Harkness, Commissioner, L.A. City Section; Jolene Eble, Administrative Assistant, CIF-SS; Tom Danley, Athletic Director, Katella H.S.; Pat McCormick, Olympic Athlete; Maureen Sanders, Principal, Paramount H.S.; Dick Rose, Assistant Principal, West Torrance H.S.; Bill Clark, CIF-SS Administrator;

Karen Hellyer, CIF-SS Administrator; Dr. Robert Packer, Past-President, State CIF; and Shirley Frazier, Director of Budget and Finance, CIF-SS, respectively.

In her time management workshop, Jo Eble told participants, "Remember you and only you can make the difference."

In Jim Clover's presentation, 'A Total Continuum of Care for the Student/Athlete,' he discussed everything from acclimatization to proper coaching techniques, cardiovascular fitness, and injury prevention. He also included ways to make high school athletics more exciting for everyone involved.

The most well attended workshops included 'Working Together-Avoiding Litigation,' 'Eligibility-How It Works,' 'Time Management Procedures for Athletic Secretaries,' and 'Financial Management of the Playoffs.'

No matter what the topic, however, the same theme could be heard throughout each presentation. As Col. Harrison put it, "Kids need leadership more than they need criticism. Our own attitude is going to be contagious. You have to make it worth catching."

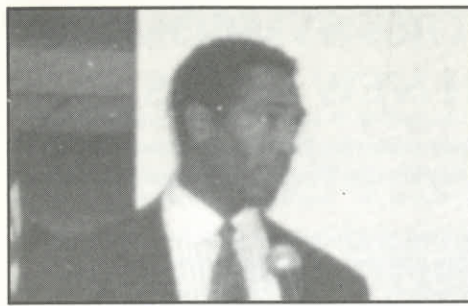
According to Pat McCormick, "To be a winner, you have to have the basics-integrity, trust, and loyalty. If you don't have credibility, you don't have anything. Be the greatest positive influence possible on the young people that are around you and you will see miracles."

However, perhaps Mike Radford, the featured keynote speaker, put it best when he said, "If you're passionate about being the best, then you will be." Radford is currently involved in bringing his 'Mentors Program' to approximately 50 CIF-SS member high schools throughout the academic year. (See related article, *Mike Radford's Mentor Workshops Show Student-Athletes The Power Of Example*, page 10.)

Summing up the overall theme of the symposium during her very powerful presentation, Pat McCormick had this to say: "Life is an olympic game and your only judge is the direction you're going in."



(Left to Right) Col. Gene Harrison giving opening remarks, Shari Radford speaking with visitors at Mike Radford's Mentor Workshop booth, Pat McCormick sharing the pride of wearing 'Olympic Gold' with a member of the audience.



MIKE HAYNES

HAYNES EMCEES CIF-SS FOOTBALL CHAMPIONSHIP PRESS CONFERENCE

"I wish you all could be winners," said Mike Haynes, former Los Angeles Raider defensive back, at the CIF-SS football championships press-conference luncheon held December 7 at the Sequoia Athletic Club in Buena Park. Haynes, a nine-time pro-bowler, emceed the 17th annual event which brought together coaches and team representatives of the 20 CIF-SS divisional finalists. It provided an excellent opportunity for area news reporters and sportscasters to get advance interviews with the coaches and players who participated in the Southern Section CIF/Reebok Championship games.

FERRAGAMO EMCEES CIF/REEBOK BOWL PRESS LUNCHEON

Former L.A. Banning High School, University of California and Los Angeles Ram quarterback Vince Ferragamo was on hand to emcee the first-ever CIF/Reebok Bowl Press-Conference Luncheon, held December 14 at the Anaheim/Orange Hilton Suites, "Official Headquarters Hotel of the CIF/Reebok Bowl." The event gave interested members of the local media the opportunity to meet the coaches and key players of the participating teams in this historic contest, which pit Los Angeles City Section 4-A champion, Sylmar, against the Southern Section Division I champion, Bishop Amat, at Anaheim Stadium on Friday, December 18. Ferragamo, himself, came out of the CIF-Los Angeles City section and went on to lead the Rams to their only Super Bowl appearance in 1980.

"This game will be a real landmark. It represents team, game and spirit and we wish the coaches and the players the very best of luck," stated Stan Thomas, CIF-SS Commissioner of Athletics.

"Both teams are winners whether you win or lose," added Ferragamo. "It's a result of all of your hard work."

According to Jeff Engilman, head coach of the Sylmar High School Spartans, "Most of our kids just dream about the City championship, the ring, but I'm sure this will be



VINCE FERRAGAMO (second from left) poses with Hal Harkness, Stan Thomas, and Bill Clark after the CIF/Reebok Bowl press conference.

quite emotional as well."

"These are memories you will cherish forever, especially playing in the first ever CIF/Reebok Bowl," stated Mark Paredes, head coach of the Bishop Amat Lancers.

"You guys established the first one and I'm sure they'll be many more to come," concluded Vince.

Others in attendance included the two ceremonial coin flippers, former CIF-SS Commissioner Ken Fagans and former CIF-L.A. City Section Commissioner Jim Cheffers; Tom Byrnes, CIF State Commissioner of Athletics; Hal Harkness, CIF-L.A. City Section Commissioner of Athletics; Bill Clark, CIF/Reebok Bowl Game Manager; Chris Thomas, CIF/Reebok Bowl Marketing Director; Scott Cathcart, CIF/Reebok Bowl Publicist; and key players and administration from both participating schools.

CIF-SS BASKETBALL PLAYOFF SURVEY RESULTS

At the direction of the CIF Southern Section Executive Committee in its June 19, 1992 meeting, the CIF-SS Administrative Staff conducted a section-wide survey of member-school and district superintendents, principals, athletic directors and coaches, relative to the current basketball playoff format.

For your information, the overall (combined personnel noted above) responses of that survey are listed below.

1,123 total surveys were returned.

I. PLAYOFF PARTICIPATION

1. Are you pleased with the current basketball playoff format, which allows for unlimited participation?

YES - 32.1% NO - 67.7%

2. Would you prefer limited playoff entries based upon regular-season performance?

YES - 71.6% NO - 26.7%

3. Would you favor the automatic elimination of all last-place teams (including ties)?

YES - 76.6% NO - 20.9%

4. Would you favor 50-percent automatic entry given to each league (i.e., 4 qualifiers in an 8-team league; 3 in a 6-team league, etc.) in lieu of the present format used in other sports (3 for each league, regardless of membership)?

YES - 63.7% NO - 39.9%

5. If you favor a limited number of playoff entries, please rank your preference (1-4, 1 being best) for selection of at-large entries to fill the brackets

-.500 winning percentage or better (all games)

1 - 39.1%; 2 - 27%; 3 - 19.3%; 4 - 14.6%

-.500 winning percentage or better (within division only)

1 - 37.1%; 2 - 34.2%; 3 - 20.5%; 4 - 8.2%

-Committee selection, based upon pre-determined criteria

1 - 13.8%; 2 - 16.8%; 3 - 27.5%; 4 - 41.9%

-Head-to-head competition (qualifying round contests)

1 - 21.6%; 2 - 17.9%; 3 - 28.8%; 4 - 31.8%

See BASKETBALL SURVEY page 15.

CIF-SS AND L.A. RAMS PRESENT FIRST-EVER "CAVALCADE OF CHAMPIONS" AWARDS

The CIF Southern Section, working in conjunction with the Los Angeles Rams, presented the first-ever "CIF-SS/L.A. Rams Cavalcade of Champions" Awards, prior to the Rams' November 29 game versus the Minnesota Vikings at Anaheim Stadium. The newly-created recognition program, designed as both a permanent and annual affair, is based upon comprehensive excellence in CIF Southern Section interscholastic athletic competition for both boys and girls sports.

The Cavalcade of Champions program is co-sponsored by Alpha-Beta, The Boys, Food-4-Less and Viva Market chains, who have combined to underwrite the cost of the awards.

"The CIF Southern Section is both enthused and thrilled at the prospect of this program," said Stan Thomas, Commissioner of Athletics. "We are most appreciative to the Rams, Alpha-Beta, The Boys, Food-4-Less and Viva Markets, for their generous efforts in bringing recognition to the most successful athletic programs of our organization."

The Cavalcade of Champions Awards were presented to the top 10 CIF-SS member schools (for both boys and girls programs) for overall athletic excellence in team sports throughout the school year. The first-ever presentations were based upon playoff competition conducted during the 1991-92 school year.

Winning schools were determined by a point system providing: five points for a divisional championship; three points for a divisional runner-up finish; two points for

CIF-SS/L.A. RAMS 1991-92 CAVALCADE OF CHAMPIONS

(Sport Abbreviations: BB - Baseball; BK - Basketball; CC - Cross Country; FB - Football; S - Soccer; SB - Softball; SD - Swimming/Diving; T - Tennis; TF - Track/Field; VB - Volleyball; WP - Water Polo; W - Wrestling)

BOYS - SPORT HONOREES

School	Pt. Accumulation	T.P.
San Marino	5 (CC); 5 (BB); 5 (T); 2 (SD)	17
Harvard-Westlake	5 (WP); 5 (TF); 3 (T); 2 (VB)	15
Corona	5 (FB); 3 (S); 5 (BB)	13
Laguna Hills	5 (FB); 5 (CC); 3 (SD)	13
Temecula Valley	5 (FB); 5 (W); 3 (BB)	13
Santa Barbara	5 (T); 5 (VB); 2 (WP)	12
Calvary Chapel/S.A.	3 (FB); 3 (W); 3 (VB); 2 (BB)	11
Esperanza	3 (FB); 3 (T); 3 (VB); 2 (CC)	11
Peninsula	5 (CC); 3 (SD); 3 (T)	11
Millikan	5 (BB); 5 (S)	10*

* Won tie breaker over Los Alamitos, Mater Dei, Mission Viejo, Morningside, Valencia and Walnut with nine (9) sport playoff appearances.

GIRLS - SPORT HONOREES

School	Pt. Accumulation	T.P.
Peninsula	3 (CC); 5 (T); 5 (BK); 2 (SD)	15
Pasadena Poly	3 (T); 5 (BK); 5 (S); 1 (CC)	14
Brea Olinda	5 (BK); 5 (SD); 1 (CC)	11
El Toro	3 (VB); 3 (S); 2 (SB); 2 (SD)	10
Thousand Oaks	5 (BK); 5 (TF)	10
Torrance	5 (S); 3 (TF); 2 (VB)	10
Woodbridge	3 (CC); 5 (SB); 2 (BK)	10
Mater Dei	5 (S); 2 (T); 2 (SB)	9*
La Reina	5 (SB); 2 (S); 2 (SD)	9*
Capistrano Valley	3 (SD); 2 (VB); 2 (T); 2 (BK)	9*

* Won tie breaker over Buena (4 appearances) - Mater Dei with six (6) sport playoff appearances; La Reina with six (6) sport playoff appearances; Capistrano Valley with five (5) sport playoff appearances.

PARTICIPATION IN INTERSCHOLASTIC ATHLETICS STILL RISING

(Printed Courtesy of The NCAA News)

Although some high-school athletics programs are being threatened with cutbacks, participation in interscholastic athletics nationwide is the highest since 1978-79, according to the annual sports-participation survey conducted by the National Federation of State High School Associations.

The National Federation has compiled the survey since 1971 based on figures from the 51 state high-school athletics activity associations that are members of the National Federation.

The 1991-92 sports participation total of 5,370,654 is up 71,983 from last year and is the highest mark since 5,563,912 in 1978-79. The total is composed of 3,429,853 boys, up 23,498 from last year and highest since 1980-81, and 1,940,801 girls, up 48,485 from a year ago and second-highest total ever, topped only by 2,083,040 in 1977-78.

The figures follow a recent announcement by high-school principals in Chicago that they intend to drop winter and spring sports unless sufficient money was raised by November 1.

"We realize that many school districts are having hard times financially, and we certainly hope that something can be done to keep high-school sports alive in Chicago," said Brice Durbin, executive director of the National Federation.

Participation in high-school athletics programs hit an all-time high of 6,450,482 in 1977-78, which was the height of large enrollments in high schools nationwide resulting from the "baby boom" generation of the late 1950s and early 1960s.

With the exception of a slight decrease from 1987-88 to 1988-89, participation has risen each year since the 1984-85 year. The 1984-85 totals stopped a six-year down-

ward spiral in which participation dropped for five years. Interest in soccer for both boys and girls, continues to grow. An increase of 7,702 participants in boys-soccer moved the sport past wrestling to become the fifth most popular sport at the high-school level. Boys' soccer is fifth with 236,082 participants, surpassing wrestling, which lost 765 participants, at 229,908.

In 1979, boys' soccer had 132,073 participants and ranked eighth nationally. In 12 years, participation has increased 100,000, and soccer has moved past tennis, cross country and wrestling in popularity.

The increase in girls' soccer has been even more dramatic. Girls' soccer has increased from 23,475 in 1979 to 135,302 last year and has moved from No. 12 to No. 6 in popularity.

Each of the schools to be honored in the competition were presented an attractive banner for permanent display on campus. The winning schools also received a block of 75 reserved-seat tickets for the Ram-Viking game, where school representatives were honored in the ceremonies conducted prior to the kickoff.

"For our member-school communities, their coaching staffs and student-athletes, this program has the potential to develop into one of our most coveted, prestigious and traditional activities. Hearty congratulations go out to the charter award winners," added Thomas.

From the Rams point of view, the program provides a vehicle to recognize interscholastic athletic excellence on a major scale, as well as the opportunity to provide a meaningful public service for the entire CIF Southern Section community.

"High school football is the foundation of our game in the National Football League," said Los Angeles Rams Owner Georgia Frontiere. "Many outstanding Rams and NFL players nurtured their competitive skills at CIF Southern Section schools. The Rams are honored to be part of this program."

MIKE RADFORD'S 'MENTOR' WORKSHOPS SHOW STUDENT-ATHLETES THE POWER OF EXAMPLE

"Sports is a parable. It's a metaphor for living the rest of your life," said Mike Radford to a group of student athletes from Corona del Mar High School at the first of many currently scheduled stops for his 'Mentors' workshop. Sponsored by the CIF Southern Section, Radford's workshop may be taken to as many as 50 schools before the school year concludes.

According to Chris Thomas, CIF-SS Director of Marketing, "We're committed to giving something back to the kids. That's why we're involved."

The program is a motivational presentation designed to demonstrate to each student, "the inherent power and influence each possesses." This is accomplished during a one to two hour period in which the students are given exercises to follow in order to gain new insight and understanding into their own

characteristics and motivations as they relate to those people to whom they each look up to. In addition, they are shown videotaped interviews Radford has conducted with superstars from both the sports world and the entertainment industry.

"All of the great athletes in the world have a circle of friends who believe in them. You either motivate one another or you drag each other down," said Radford. "You need to pick friends who motivate you, no

matter what your goals are in life. As long as we are pulling in the same direction, we're motivating one another," he went on to say.

Radford, a four year letterman in high school, and an outstanding collegiate athlete as well, played baseball for the U.S. Army All-Star Team and in spring training with the Kansas City Royals for a short period of time. However, finding a new career in sports broadcasting, he worked as a sports-

He told the students, "If there's somebody you want to meet to help you get going on your dreams, you've got to make it happen."

For Radford, that person was Bob Richards, the man who encouraged him to get back into baseball through broadcasting.

Radford told the students to never give up on themselves like he once had.

"God gave you some athletic abilities that the others don't have. You have wonderful destinies in front of you," he stated.

The 'Mentors' workshop was put together by the Mentor's Advisory Board, a group who "believes you are the future of this country," Radford told the students. Among the members present were Orange County Superintendent of Schools Dr. John Dean, Business Education Partnership Specialist Lorraine D a g e f o r d e , Restaurateur Bill Hamilton, Commissioner of Recre-

ation Phil Glasgow, CEO of Newport Beach's Conference and Visitors Bureau Rich Gartrell, and Emmy Winning Director Jim Stimpson.

Also in attendance at the October 7 program were Dr. Tom Jacobson, Principal of Corona del Mar High School and Past-President of the CIF-SS Council; Dean Crowley, Associate Commissioner of the CIF-SS Office; Chris Thomas, Director of Sports Marketing for the CIF-SS Office, and Shari Radford, Mike's wife.



Photo courtesy of Shari Radford.

MIKE RADFORD (third from left) poses with Chris Thomas, Dr. Tom Jacobson, and Dean Crowley after his Mentors' Workshop at Corona del Mar High School.

caster in Sacramento and later as an outside sports producer for ABC-TV in Hollywood.

Abandoned by his father at birth, Radford learned to understand the importance of mentors in a young person's life. As a result, he was able to share several emotional stories with those students attending the workshop, stories which showed his own vulnerability and stories that illustrated the softer side of many of today's most admired athletes.

CIF-SS HALL OF FAME CHARTER MEMBER "DUFFY" LEWIS DIES

Dr. Phillip U. "Duffy" Lewis, a man who spent over 41 years as a coach and athletic director in CIF-SS schools, passed away on Nov. 3. Services were held on Nov. 5 for Lewis, who is credited with the establishment and growth of the entire athletic and physical education program of La Salle High School in Pasadena.

Lewis served as the head varsity basketball and baseball coach for 10 years at La Salle, head of the track team for three seasons, a consultant at the school for four years, and Vice Principal for two years.

Taking his basketball squad into the CIF-SS playoffs on several occasions, his all-time record stands at 352-74. In addition, Lewis coached football, track and baseball teams previously at Montebello, Burbank, and Notre Dame/Sherman Oaks High Schools.

Lewis's son, Jim, is currently a teacher at Simi Valley High School.

In 1981, Lewis was honored by La Salle High School as the alumni dedicated the La Salle gymnasium in his name. When the gym was first constructed in 1960, Lewis

was a major contributor to its design.

Among his other honors, Lewis was awarded a plaque by the Catholic Athletic Association for coaching excellence and service to athletics. In addition, he was named the Santa Fe League Coach of the Year in 1978.

A charter member of the National Football Hall of Fame and a member of the American Football Coaches Association, Lewis also belonged to the National Athletic Directors Association and the Southern California Basketball and Football Association.

OFFICE OUTLOOK

TIMELINESS AND FOLLOW-THROUGH CREATE A MORE POSITIVE COMMUNICATION NETWORK

Working together to minimize problems with dissemination of information and follow-through on requests for information is something everyone involved in interscholastic athletics should strive to more effectively achieve. In order to accomplish this goal, there are several key procedures to keep in mind.

The first of these strategies is "follow-through." Athletic secretaries should be very careful to utilize a log in which incoming and outgoing requests are kept, the department to which they are sent, to whom they are addressed, when they are received or mailed out, and when the item is due back to the originator. With that information on hand, the secretary can then follow through on the progression of the item to completion.

Secretaries should also keep in mind, when considering deadlines, that it takes approximately 2-5 days for a first class mailing to arrive at the CIF Southern Section Office. The fax, however, is a more immediate way of communication.

Lack of proper follow-up procedures on items from the CIF-SS Office usually results in second, third and even fourth requests for information adding additional cost to the office. Many dollars in

postage are wasted, not to mention valuable employee time. Because of this, the CIF-SS has adopted new procedures and, in the future, there will be **no second or third requests** sent. If no response is received following the initial request, possibly a follow-up call to the principal or the school will occur. If the information is still not received in a timely manner, then the school will not be included in that particular information item.

Close attention needs to be paid to the proper distribution of information once it is received by an athletic secretary. Material needs to be distributed properly and on time. To aid in this venture, the CIF-SS Office produces an Administrative Update monthly which is sent to athletic directors. This is a vehicle the office uses to include as many important items as possible in one package, many of which can be copied and distributed to appropriate departments.

By keeping all of these tips in mind, the CIF-SS Office, along with principals, athletic directors, coaches and athletic secretaries, can work as a team to more efficiently communicate throughout the system of interscholastic athletics, creating a more positive outcome for everyone involved.

CIF SOUTHERN SECTION: AN OVERVIEW

Now entering its 80th year of operation, the California Interscholastic Federation, Southern Section, is a non-profit service organization, which stands as the administrative body for the extracurricular athletic programs of some 482 secondary schools in Central and Southern California.

The CIF Southern Section membership consists of every type of school imaginable -public, private and parochial- within a geographic boundary that spans from Calexico on the Mexican border to San Luis Obispo County on the Central Coast. In the east, section boundaries stretch as far north as Lee Vining in Inyo County.

The CIF Southern Section was founded in 1913 to direct, formulate and administer interscholastic athletics, in an effort to make a maximum contribution to the physical, mental, emotional, social and moral growth of participating students. The charge of the CIF-SS is to administrate interscholastic athletics by means of a constitution, by-laws, regulation and efficient organization.

The CIF-SS establishes the responsibility for the administration of interscholastic athletics to be carried out in a consistent manner among all member schools within the spirit, letter and intent of the rules. Finally, the CIF-SS promotes the understanding and acceptance of the Cardinal Athletic Principles and its own Code of Ethics, in an effort to nurture more cordial relationships among the member schools.

In the area of governance, the CIF Southern Section is first and foremost a principal's organization. The chief legislative body is the Council, comprised of one representative from each of the section's 70 member leagues. Each school has a voice and an equal vote in the determination of CIF Southern Section policy, as issues brought to the council are initiated and discussed at the league level. The CIF-SS Council meets four times yearly.

The CIF-SS Executive Committee, composed of administrators elected by the Council, serves as the administrative body of Council, and is charged with interpretation and enforcement of CIF-SS rules and regulations. The Executive Committee meets a minimum of six times each calendar year.

Day-to-day operation of the CIF Southern Section office, located near Richard Gahr High School in Cerritos, is the responsibility of Commissioner of Athletics Stan Thomas. The Commissioner serves as chief of the administrative staff, rules on all issues pertaining to CIF-SS competition, handles negotiations with outside agencies, organizes all governmental meetings and deals with any legal issues that may arise. The commissioner is hired by and answers to the Executive Committee.

In addition to the Commissioner, the CIF-SS Office employs three full-time administrators, including Associate Commissioner Dean Crowley, Bill Clark, and Karen Hellyer.

The role of the administrative staff is to assist the Commissioner in the interpretation of eligibility rules, playing rules, and regulations specific to particular sports as assigned.

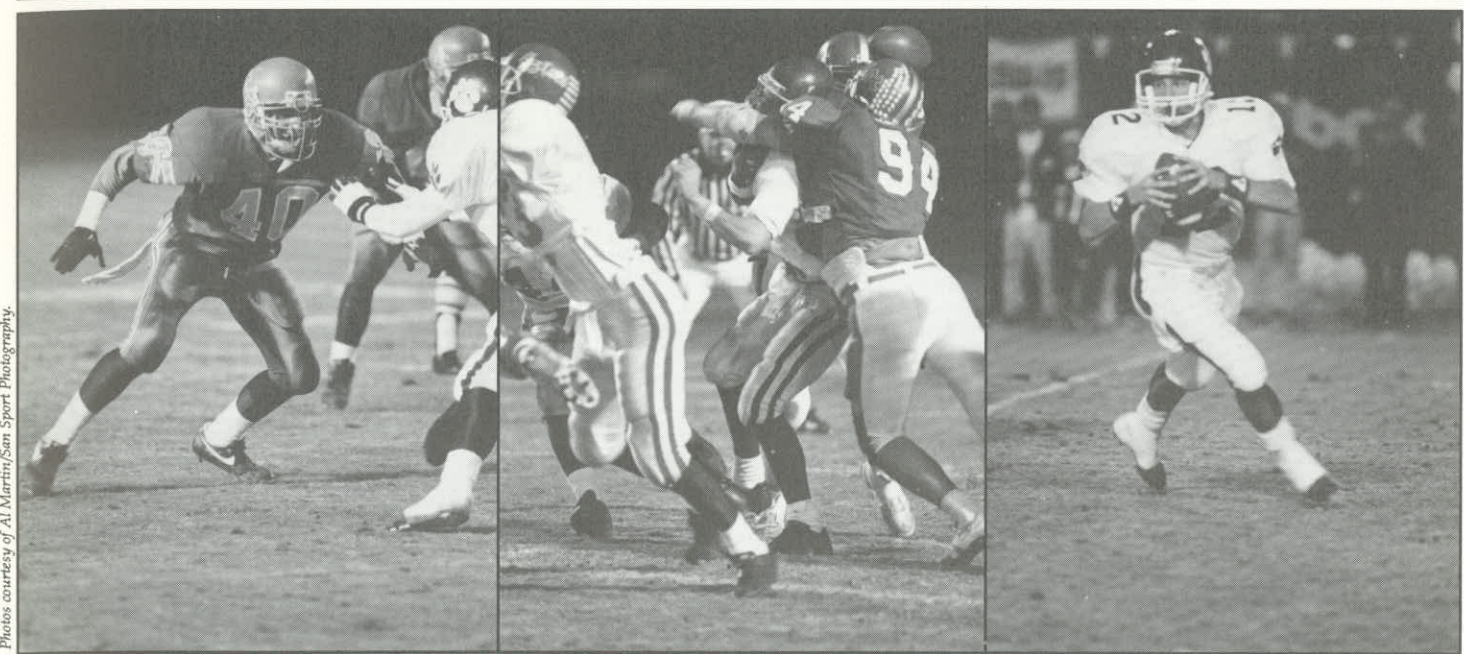
Within the specific sport departments, the administrators do the following: publish and distribute official regulations regarding scheduling for off season and preseason practice; provide member school coaches with the official playing rules; review sanctioning for events such as tournaments and out-of-state competition, take action on irregular contest incidents and settle disputes; organize progress reports on regular-season competition; maintain communications with member-school administrators and coaches concerning playoff scheduling and entry requirements; gather league entries and produce pairings for post-season playoffs; oversee coordination of officiating assignments for all playoff contests; secure facilities for championship events and manage all aspects of such events.

Financial support for CIF Southern Section activities is derived from three sources: annual member-school dues; gate income from section playoff and championship events; and corporate support programs as initiated by the Commissioner and his staff. One of 10 member sections in the State CIF, the Southern Section stands as California's oldest and largest, with over one-third of the state's secondary schools among its membership. On a national basis, the CIF-SS ranks as the eighth largest organization of its type.

SOUTHERN SECTION CIF/REEBOK 1992 FOOTBALL PLAYOFF RESULTS

<p>DIVISION I</p> <p>First Round:</p> <p>Bishop Amat 38 Mission Viejo 0</p> <p>L. B. Wilson 24 Antelope Vly. 10</p> <p>Mater Dei 40 Crespi 0</p> <p>Eisenhower 49 Lakewood 8</p> <p>Loyola 55 Palmdale 27</p> <p>Redlands 13 Capistrano Vly. 10</p> <p>L. B. Poly 10 St. Paul 3</p> <p>Fontana 41 Littlerock 7</p> <p>Second Round:</p> <p>Bishop Amat 28 L. B. Wilson 7</p> <p>Eisenhower 19 Mater Dei 3</p> <p>Loyola 39 Redlands 8</p> <p>Fontana 8 L. B. Poly 6</p> <p>Semifinals:</p> <p>Bishop Amat 28 Eisenhower 6</p> <p>Loyola 17 Fontana 7</p> <p>Finals:</p> <p>Bishop Amat 7 Loyola 3</p> <p>DIVISION II</p> <p>First Round:</p> <p>Los Alamitos 41 Arcadia 14</p> <p>Fountain Vly. 44 Warren 28</p> <p>Crescenta Vly. 25 Marina 9</p> <p>Hart 45 Downey 14</p>	<p>Esperanza 28 Huntington Beach 21</p> <p>Dominguez 38 Saugus 33</p> <p>Servite 14 El Dorado 0</p> <p>Muir 48 Canyon/C.C. 10</p> <p>Los Alamitos 48 Fountain Vly. 16</p> <p>Crescenta Vly. 13 Hart 7</p> <p>Esperanza 23 Dominguez 14</p> <p>Muir 21 Servite 14</p> <p>Semifinals:</p> <p>Los Alamitos 28 Crescenta Vly. 10</p> <p>Esperanza 28 Muir 7</p> <p>Los Alamitos 14 Esperanza 14</p> <p>DIVISION III</p> <p>First Round:</p> <p>Bell Gardens 14 Agoura 7</p> <p>Peninsula 20 Ventura 14</p> <p>Camarillo 17 Santa Barbara 7</p> <p>Baldwin Park 29 Montebello 7</p> <p>Simi Valley 26 Rowland 10</p> <p>Hawthorne 15 Schurr 7</p> <p>Nogales 50 Newbury Park 36</p> <p>San Marcos 24 Leuzinger 7</p> <p>Second Round:</p> <p>Bell Gardens 23 Peninsula 6</p>	<p>Camarillo 19 Baldwin Park 0</p> <p>Hawthorne 18 Simi Valley 14</p> <p>San Marcos 27 Nogales 23</p> <p>Semifinals:</p> <p>Bell Gardens 16 Camarillo 7</p> <p>Hawthorne 14 San Marcos 9</p> <p>Finals:</p> <p>Hawthorne 14 Bell Gardens 6</p> <p>DIVISION IV</p> <p>First Round:</p> <p>Rubidoux 35 St. Bernard 13</p> <p>Newport Harbor 31 Damien 0</p> <p>Orange 19 Canyon Springs 7</p> <p>Corona del Mar 36 Chaminade 29</p> <p>Foothill 23 Riverside Poly 21</p> <p>Santa Margarita 28 Glendora 7</p> <p>El Modena 34 Notre Dame/S.O. 21</p> <p>Irvine 21 Chino 14</p> <p>Second Round:</p> <p>Santa Margarita 28 Glendora 7</p> <p>El Modena 34 Notre Dame/S.O. 21</p> <p>Irvine 21 Chino 14</p> <p>Semifinals:</p> <p>Indio 21 Corona 16</p> <p>Norco 42 Alta Loma 21</p> <p>Newport Harbor 28 Rubidoux 14</p> <p>Corona del Mar 13 Orange 10</p> <p>Foothill 35 Santa Margarita 28</p> <p>Irvine 27 El Modena 0</p> <p>Semifinals:</p> <p>Newport Harbor 28 Corona del Mar 21</p> <p>Irvine 35 Foothill 14</p>	<p>Finals:</p> <p>Arroyo 23 Western 20</p> <p>Irvine 30 Newport Harbor 8</p> <p>DIVISION V</p> <p>First Round:</p> <p>Indio 35 Elsinore 18</p> <p>Perris 21 Etiwanda 14</p> <p>Temecula Vly. 38 Barstow 17</p> <p>Corona 19 Montclair 0</p> <p>Valley View 24 Pacific 0</p> <p>Alta Loma 21 Palm Desert 7</p> <p>Colton 38 Hemet 16</p> <p>Norco 42 Central 0</p> <p>Second Round:</p> <p>Indio 40 Perris 13</p> <p>Corona 24 Temecula Vly. 13</p> <p>Alta Loma 14 Valley View 7</p> <p>Norco 28 Colton 14</p> <p>Semifinals:</p> <p>Indio 21 Corona 16</p> <p>Norco 42 Alta Loma 21</p> <p>Kennedy 38 Morningside 13</p> <p>San Luis Obispo 34 Sierra Vista 7</p> <p>Garden Grove 30 Troy 14</p> <p>DIVISION VI</p> <p>First Round:</p> <p>Charter Oak 35 El Rancho 18</p> <p>Newport Harbor 28 Corona del Mar 21</p> <p>Valencia 38 Covina 9</p> <p>Irvine 35 Foothill 14</p>	<p>Rancho Alamitos 57 Righetti 17</p> <p>Second Round:</p> <p>Sunny Hills 28 Kennedy 7</p> <p>Garden Grove 20 San Luis Obispo 0</p> <p>Lompoc 28 Los Amigos 13</p> <p>Rancho Alamitos 20 Culver City 6</p> <p>Semifinals:</p> <p>Sunny Hills 21 Garden Grove 7</p> <p>Rancho Alamitos 21 Lompoc 7</p> <p>Finals:</p> <p>Sunny Hills 14 Rancho Alamitos 13</p> <p>DIVISION VIII</p> <p>First Round:</p> <p>La Sierra 35 So. Pasadena 7</p> <p>Bellflower 36 Serra 8</p> <p>La Mirada 35 Blair 14</p> <p>Valencia 23 Duarte 15</p> <p>Trabuco Hills 21 Notre Dame/R. 0</p> <p>Century 20 Temple City 6</p> <p>Yucaipa 56 St. Monica 13</p> <p>Laguna Hills 28 Artesia 24</p> <p>San Marino 26 Verbum Dei 7</p> <p>Garden Grove 30 Troy 14</p> <p>La Sierra 22 Bellflower 21</p> <p>La Mirada 35 Trabuco Hills 21</p> <p>Century 35 Yucaipa 14</p> <p>Montclair Prep 35 Nordhoff 7</p> <p>Finals:</p> <p>Montclair Prep 35 Bishop Diego 7</p>	<p>San Marino 27 Laguna Hills 12</p> <p>Semifinals:</p> <p>La Mirada 28 La Sierra 14</p> <p>San Marino 16 Century 14</p> <p>Finals:</p> <p>La Mirada 28 San Marino 7</p> <p>DIVISION IX</p> <p>First Round:</p> <p>St. Joseph/S.M. 47 Santa Paula 6</p> <p>West Torrance 31 Beaumont 30</p> <p>Bishop Diego 20 Cabrillo 10</p> <p>North Torrance 24 Calabasas 12</p> <p>South Torrance 15 Oak Park 0</p> <p>Montclair Prep 26 Murrieta Vly. 0</p> <p>Paso Robles 7 Carpinteria 0</p> <p>Nordhoff 35 Serrano 8</p> <p>West Torrance 38 St. Joseph/S.M. 28</p> <p>Bishop Diego 31 North Torrance 14</p> <p>Montclair Prep 15 South Torrance 0</p> <p>Nordhoff 20 Paso Robles 14</p> <p>Semifinals:</p> <p>Bishop Diego 41 West Torrance 26</p> <p>Montclair Prep 35 Nordhoff 7</p> <p>Finals:</p> <p>Montclair Prep 35 Bishop Diego 7</p>
--	---	--	--	--	---

(Cont. on opposite page.)



Photos courtesy of Al Martin/San Sport Photography.

SOUTHERN SECTION CIF/REEBOK 1992 FOOTBALL CHAMPIONS

DIVISION I Bishop Amat	DIVISION IV Irvine	DIVISION VII Sunny Hills	DIVISION X Big Bear
DIVISION II Los Alamitos Esperanza	DIVISION V Norco	DIVISION VIII La Mirada	DIVISION XI Templeton
DIVISION III Hawthorne	DIVISION VI Valencia	DIVISION IX Montclair Prep	EIGHT MAN LARGE Brentwood
			EIGHT MAN SMALL California Lutheran

FOOTBALL RESULTS (Cont.)

<p>DIVISION X</p> <p>First Round:</p> <p>Big Bear 63 Western Chr. 13</p> <p>Salesian 28 Mojave 7</p> <p>Village Chr. 35 Banning 21</p> <p>Brethren 7 Kilpatrick 0</p> <p>Kern Vly. 28 Murphy 26</p> <p>Whittier Chr. 19 Yuca Vly. 16</p> <p>L.A. Baptist 21 Valley Chr./C. 3</p> <p>Bishop 47 Cathedral 6</p>	<p>Second Round:</p> <p>Big Bear 35 Salesian 3</p> <p>Brethren Chr. 19 Village Chr. 0</p> <p>Kern Vly. 35 Whittier Chr. 32</p> <p>Bishop 40 L.A. Baptist 7</p> <p>Big Bear 24 Brethren Chr. 14</p> <p>Bishop 28 Kern Vly. 23</p> <p>Big Bear 13 Bishop 12</p>	<p>DIVISION XI</p> <p>First Round:</p> <p>Linfield 30 Trona 27</p> <p>Templeton 51 Life Chr. 12</p> <p>Mammoth 35 So. Calif. Chr. 6</p> <p>Hamilton 46 Coast Union 6</p> <p>Semifinals:</p> <p>Templeton 35 Linfield 13</p> <p>Hamilton 17 Mammoth 7</p> <p>Finals:</p> <p>Templeton 14 Hamilton 7</p>	<p>EIGHT MAN LARGE</p> <p>First Round:</p> <p>Faith Baptist 52 Campbell Hall 22</p> <p>Hesperia Chr. 40 Viewpoint 8</p> <p>Webb 40 Flintridge Prep 33</p> <p>Brentwood 48 Pasadena Poly 10</p> <p>Hesperia Chr. 45 Faith Baptist 36</p> <p>Brentwood 30 Webb 13</p> <p>Finals:</p> <p>Brentwood 21 Hesperia Chr. 8</p>	<p>EIGHT MAN SMALL</p> <p>First Round:</p> <p>Antelope Valley Chr. 28 Masada 16</p> <p>California Lutheran 52 Desert Chr. 22</p> <p>Shandon 19 Rio Hondo Prep 7</p> <p>Riverside Chr. 69 Heritage Chr. 32</p> <p>Bloomington Chr. 66 Lone Pine 22</p> <p>Ambassador Chr. 62 Gateway Chr. 26</p> <p>Valley Chr. /S.M. 71 L.A. Lutheran 42</p> <p>Ribet Academy 70 Cuyama Vly. 20</p> <p>Semifinals:</p> <p>Bloomington Chr. 55 Vly. Chr./S.M. 21</p> <p>Finals:</p> <p>California Lutheran 26 Bloomington Chr. 20</p>	<p>Second Round:</p> <p>California Lutheran 62 Antelope Vly. Chr. 12</p> <p>Shandon 45 Riverside Chr. 32</p> <p>Bloomington Chr. 70 Ambassador Chr. 36</p> <p>Valley Chr./SM 55 Ribet Acad. 40</p>
---	--	--	---	--	---

SOUTHERN SECTION CIF/REEBOK 1992 GIRLS VOLLEYBALL PLAYOFF RESULTS

DIVISION I

Wild Card: Estancia def. Pius X 15-3, 15-3, 15-7; Marlborough def. El Toro 11-15, 15-8, 15-6, 15-7, 15-6; Mater Dei def. St. Anthony 15-11, 15-3, 15-8; Marymount def. Beverly Hills 16-14, 15-0, 15-2; Agoura def. Ventura 15-5, 15-6, 15-8; Redondo def. Santa Margarita 15-10, 15-13, 16-14; Newport Harbor def. Laguna Hills 15-4, 15-6, 15-6; Westlake def. San Marcos 15-12, 16-14, 3-15, 15-13.

First Round: Corona del Mar def. Estancia 15-1, 15-3, 15-3; Mira Costa def. Marlborough 15-10, 15-8, 15-10; Thousand Oaks def. Mater Dei 15-8, 15-1, 15-9; Santa Barbara def. Marymount 15-10, 6-15, 15-11, 15-13; Laguna Beach def. Agoura 16-14, 15-2, 15-5; Capistrano Valley def. Redondo 15-6, 12-15, 15-8, 15-7; Newport Harbor def. St. Joseph/L. 15-12, 6-15, 15-5, 15-7; Notre Dame Academy def. Westlake 15-3, 15-0, 15-9.

Second Round: Corona del Mar def. Mira Costa 15-4, 15-7, 17-15; Santa Barbara def. Thousand Oaks 15-6, 15-8, 11-15, 15-5; Laguna Beach def. Capistrano Valley 15-2, 15-8, 11-15, 15-5; Newport Harbor def. Notre Dame Academy 2-15, 15-10, 12-15, 15-10, 15-8.

Semifinals: Corona del Mar def. Santa Barbara 16-14, 13-15, 15-11; Laguna Beach def. Newport Harbor 15-8, 15-17, 11-15, 15-8, 15-12.

Finals: Corona del Mar def. Laguna Beach 15-1, 15-13, 15-12.

DIVISION II

First Round: Edison Bye; El Modena def. Troy 15-4, 15-9, 15-3; Paramount def. Hoover 15-12, 7-15, 15-9, 12-15, 15-10; Sunny Hills def. Orange 15-5, 15-7, 15-10; Fountain Valley def. Cypress 15-11, 10-15, 15-12, 15-9; Millikan def. Santa Monica 14-16, 15-5, 15-2, 15-1; Alhambra def. Cerritos 15-10, 15-13, 4-15, 15-8; Harvard/Westlake def. Pasadena 15-9, 15-9, 15-6; Gahr def. L. B. Wilson 15-4, 15-9, 15-10; Chaminade def. Arcadia 10-15, 15-9, 15-11, 15-6; Foothill def. El Dorado 15-5, 15-13, 15-6; Huntington Beach def. La Habra 8-15, 12-15, 15-4, 15-0, 15-5; Los Alamitos def. San Gabriel 15-8, 15-12, 11-15, 15-12; Bishop Montgomery def. Inglewood 15-1, 15-3, 15-2; Bell Gardens def. Peninsula 9-15, 15-7, 15-9, 15-13; Marina def. L.B. Poly 15-11, 16-14, 13-15, 7-15, 15-9.

Second Round: Edison def. El Modena 15-7, 15-10, 15-6; Sunny Hills def. Paramount 15-2, 15-9, 15-1; Fountain Valley def. Millikan 15-12, 15-4, 15-9; Harvard/Westlake def. Alhambra 15-2, 18-16, 15-3; Gahr def. Chaminade 15-9, 15-6, 15-13; Huntington Beach def. Foothill 15-12, 15-10, 10-15, 15-2; Bishop Montgomery def. Los Alamitos 16-14, 15-11, 14-16, 15-13; Marina def. Bell Gardens 15-5, 15-10, 11-15, 15-7.

Quarterfinals: Sunny Hills def. Edison 5-15, 15-6, 11-15, 15-6, 15-11; Fountain Valley def. Harvard/Westlake 15-12, 15-10, 15-6; Huntington Beach def. Gahr 15-11, 15-11, 15-8; Bishop Montgomery def. Marina 15-8, 14-16, 15-17, 15-11, 15-13.

Semifinals: Sunny Hills def. Fountain Valley 15-9, 11-15, 15-13, 15-8; Bishop Montgomery def. Huntington Beach 17-15, 11-15, 10-15, 15-6, 15-9.

Finals: Bishop Montgomery def. Sunny Hills 12-15, 15-8, 12-15, 15-8, 15-9.

DIVISION III

Wild Card: Don Lugo def. Santiago 4-15, 15-8, 15-12, 15-6; La Sierra def. Riverside Poly 15-9, 15-10, 15-10; St. Lucy's def. Baldwin Park 15-2, 15-10, 15-

6; Victor Valley def. Highland 16-14, 12-15, 11-15, 17-15, 15-3; West Torrance def. Burroughs/B. 15-12, 15-8, 15-7; Santa Fe def. Lompoc 16-14, 15-10, 15-4; Charter Oak def. Ontario 15-4, 15-7, 15-5.

First Round: Torrance def. Don Lugo 15-6, 15-3, 15-3; Kennedy def. La Sierra 15-5, 12-15, 15-6, 16-14; Apple Valley def. Antelope Valley 15-10, 15-9, 14-16, 17-15; Alta Loma def. Wilson/H.H. 15-8, 15-8, 9-15, 15-10; St. Lucy's def. J.W. North 15-13, 12-15, 15-11, 16-14; Rim of the World def. Victor Valley 15-3, 15-10, 15-8; La Serna def. Ayala 15-8, 15-9, 15-3; San Luis Obispo def. Canyon/C.C. 15-6, 5-15, 19-17, 15-10; Claremont def. Redlands 15-5, 15-10, 15-5; Diamond Bar def. Canyon Springs 6-15, 15-9, 15-13, 15-5; Los Altos def. Notre Dame/R. 15-9, 16-14, 15-11; South Torrance def. La Quinta 15-1, 15-12, 15-2; Arroyo Grande def. West Torrance 15-6, 10-15, 15-7, 15-11; Whittier def. Etiwanda 16-14, 15-8, 15-3; Quartz Hill def. Santa Fe 15-7, 15-12, 13-15, 15-5; Saugus def. Charter Oak 15-2, 15-4, 13-15, 15-5.

Second Round: Torrance def. Kennedy 15-6, 15-3, 15-1; Alta Loma def. Apple Valley 15-12, 15-8, 15-5; Rim of the World def. St. Lucy's 15-8, 15-7, 15-6; San Luis Obispo def. La Serna 12-15, 15-1, 15-4, 16-14; Claremont def. Diamond Bar 15-9, 15-10, 11-15, 15-4; South Torrance def. Los Altos 15-6, 15-10, 15-10; Arroyo Grande def. Whittier 15-6, 15-9, 15-6; Saugus def. Quartz Hill 15-8, 15-6, 15-13.

Quarterfinals: Torrance def. Alta Loma 15-0, 15-2, 15-5; Rim of the World def. San Luis Obispo 13-15, 10-15, 15-13, 15-12, 15-7; South Torrance def. Claremont 7-15, 15-9, 15-7, 15-13; Saugus def. Arroyo Grande 15-13, 14-16, 15-4, 13-15, 15-12.

Semifinals: Torrance def. Rim of the World 15-10, 15-4, 15-10; South Torrance def. Saugus 14-16, 5-15, 15-4, 15-6, 15-7.

Finals: Torrance def. South Torrance 15-12, 15-9, 15-7.

DIVISION IV

Wild Card: Western def. Artesia 15-13, 15-12, 15-11; La Canada def. Arroyo 15-3, 16-14, 7-15, 19-17; Oak Park def. St. Genevieve 15-10, 15-5, 11-15, 15-5; Palm Springs def. Palm Desert 13-15, 16-14, 15-9, 15-9.

First Round: Nordhoff def. Santa Ynez 15-10, 15-7, 2-15, 15-3; Centennial/C. def. Norwalk 15-10, 15-11, 15-5; Carpinteria def. South Pasadena 15-10, 12-15, 15-8, 15-12; Paso Robles def. Santa Clara 15-2, 15-9, 15-2; Valencia def. Hemet 15-1, 15-5, 15-11; Cajon def. Coachella Valley 15-8, 13-15, 15-3, 13-15, 15-9; Rosemead def. Western 15-4, 15-9, 15-13; La Canada def. St. Mary's 15-9, 15-8, 15-12; La Reina def. Bell-Jeff 16-14, 15-10, 15-12; Atascadero def. Moorpark 15-3, 15-7, 15-7; Temple City def. Oak Park 15-2, 15-4, 15-11; La Mirada def. El Monte 15-9, 15-12, 15-6; Temecula Valley def. San Geronio 15-4, 15-5, 9-15, 15-5; Brawley def. Norco 15-6, 15-12, 15-5; Colton def. Brea Olinda 15-4, 15-12, 15-8; Elsinore def. Palm Springs 15-2, 15-4, 15-3.

Second Round: Nordhoff def. Centennial/C. 15-3, 15-6, 15-5; Carpinteria def. Paso Robles 15-11, 18-16, 15-9; Valencia def. Cajon 15-2, 15-5, 15-6; La Canada def. Rosemead 15-7, 8-15, 15-2, 15-10; Atascadero def. La Reina 10-15, 15-13, 17-15, 15-10; La Mirada def. Temple City 15-13, 15-7, 13-15, 9-15, 15-10; Temecula Valley def. Brawley 15-2, 12-15, 15-9, 15-9; Elsinore def. Colton 7-15, 15-3, 15-6, 15-8.

Quarterfinals: Nordhoff def. Carpinteria 15-3, 15-2, 15-8; La Canada def. Valencia 14-16, 15-8, 15-2, 15-10; Atascadero def. La Mirada 15-4, 9-15, 11-15, 15-11, 15-8; Temecula Valley def. Elsinore 12-15, 15-12, 5-15, 15-13, 15-12.

Semifinals: Nordhoff def. La Canada 9-15, 15-8, 15-8, 15-5; Atascadero def. Temecula Valley 15-13, 15-13, 15-13.

Finals: Nordhoff def. Atascadero 15-9, 15-8, 15-4.

DIVISION V

Wild Card: Montclair Prep def. Sierra Vista 8-15, 15-7, 15-5; Alverno def. Aquinas 12-15, 15-7, 6-15, 15-11, 15-11.

First Round: Capistrano Vly. Chr. def. Whitney 15-2, 15-4, 15-4; Chadwick def. Connelly 15-0, 15-4, 15-8; West Valley def. Big Bear 15-13, 15-7, 4-15, 4-15, 15-8; Northview def. Montclair Prep 15-8, 15-17, 10-15, 15-2, 15-5; Pasadena Poly def. Alverno 15-13, 15-8, 15-4; Village Christian def. La Puente 15-8, 15-2, 15-4; Bishop def. Holy Family 13-15, 11-15, 15-7, 15-4, 15-9; Brentwood def. St. Matthias 15-1, 15-3, 15-9; Calvary Chapel/S.A. def. Beaumont 15-6, 15-4, 15-1; South Hills def. Twentynine Palms 15-10, 15-8, 15-10; Bassett def. Maranatha 15-13, 15-8, 15-4; Bonita def. Flintridge Prep 12-15, 15-5, 15-12, 15-13; Whittier Chr. def. Ramona Convent 15-11, 15-0, 15-9; Paraclete def. Serrano 15-9, 15-10, 12-15, 15-8; Crossroads def. Loretto/Conaty 15-6, 15-10, 15-7; L.A. Baptist def. Desert 15-13, 15-1, 15-2.

Second Round: Capo Val Chr def. Chadwick 15-4, 15-3, 15-9; Northview def. West Valley 16-14, 15-9, 15-6; Pasadena Poly def. Village Chr. 15-0, 16-14, 15-10; Brentwood def. Bishop 15-0, 15-7, 16-14; Cal Chp/SA def. South Hills 15-17, 12-15, 15-8, 15-8, 15-5; Bonita def. Bassett 15-6, 15-9, 15-12; Whittier Chr. def. Paraclete 15-3, 15-17, 15-6, 15-12; L.A. Baptist def. Crossroads 15-9, 15-5, 15-2.

Quarterfinals: Capistrano Vly. Chr. def. Northview 15-2, 15-5, 15-9; Brentwood def. Pasadena Poly 15-11, 15-7, 15-8; Calvary Chapel/S.A. def. Bonita 15-17, 15-10, 15-9, 15-9; L.A. Baptist def. Whittier Chr. 15-10, 15-10, 15-9.

Semifinals: Capistrano Vly. Chr. def. Brentwood 15-7, 15-3, 15-3; L.A. Baptist def. Calvary Chapel/S.A. 15-12, 15-12, 9-15, 15-10.

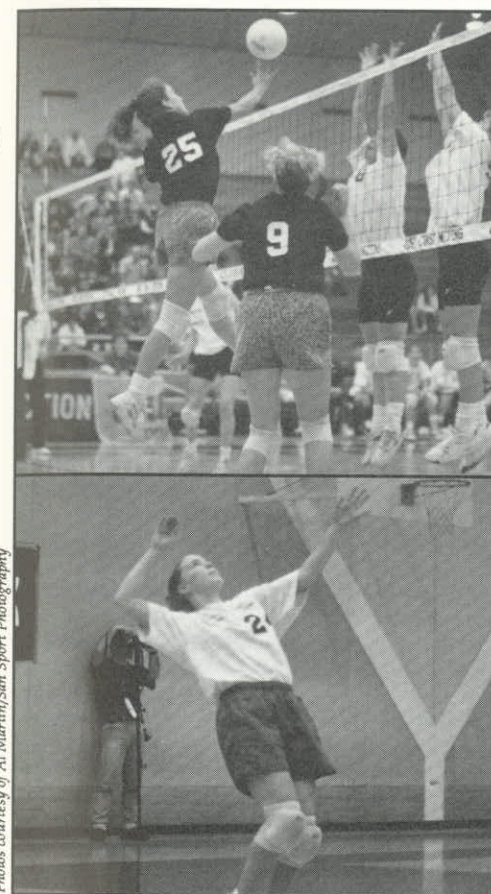
Finals: Capistrano Vly. Chr. def. L.A. Baptist 15-13, 15-2, 10-15, 15-12.

DIVISION VI

Wild Card: Pioneer Baptist def. Westside Prep 15-5, 15-3, 15-4; Hamilton def. West Shores 15-3, 15-3, 15-4; California Lutheran def. Corona Chr. 15-6, 15-8, 15-8; Cornerstone Chr. def. Coastal Chr. 9-15, 15-9, 5-13, 16-14, 15-9; Pilgrim def. Glendale Adventist 6-15, 15-4, 15-5, 16-14; Baker def. Christian/S.B. 15-9, 6-15, 15-7, 15-9; Thacher def. Viewpoint; Bethel Chr./L. def. Lee Vining forfeit; Hesperia Chr. def. Lone Pine 10-15, 15-7, 15-13, 15-13; Sherman Indian def. Bethel Chr./R. 16-14, 15-8, 15-6.

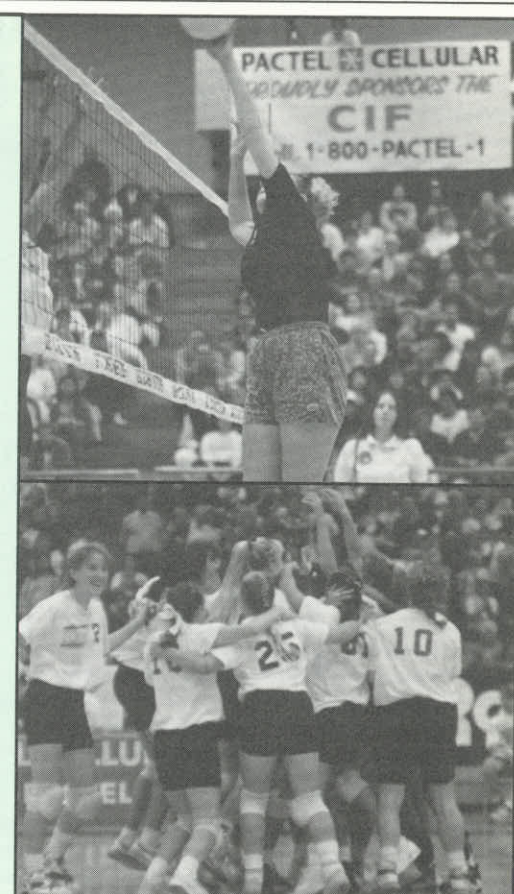
First Round: St. Margaret's def. Pioneer Baptist 15-5, 15-4, 15-7; Baptist Christian/H. def. Hamilton 10-15, 15-6, 15-5, 15-4; Calvary Chapel/D. def. California Lutheran 15-8, 13-15, 16-14, 15-5; Templeton def. Cornerstone Chr. 15-3, 15-1,

(Cont. on opposite page.)



Photos courtesy of Al Martin/San Sport Photography

- SOUTHERN SECTION
CIF/REEBOK
1992 GIRLS VOLLEYBALL
CHAMPIONS
- DIVISION I
Corona del Mar
- DIVISION II
Bishop Montgomery'
- DIVISION III
Torrance
- DIVISION IV
Nordhoff
- DIVISION V
Capistrano Valley Christian
- DIVISION VI
Templeton



VOLLEYBALL RESULTS

(Cont.)

15-6; Windward def. Pilgrim 15-3, 15-4, 15-5; Calvary Chapel/R. def. Baker 15-9, 15-4, 15-11; Owens Valley def. West LA Baptist 15-13, 15-8, 16-14; Mammoth def. Providence 15-1, 9-15, 15-1, 15-11; Coast Union def. Thacher 15-4, 15-6, 15-4; Valley Chr./S.M. def. Manogian 1-0 forfeit; Hillcrest Chr. def. Gethsemane Bapt 13-15, 15-12, 15-10, 15-3; First Lutheran def. Bethel Chr./L. 15-8, 5-15, 15-2, 15-6; Hesperia Chr. def. La Sierra Academy 15-6, 15-10, 9-15, 15-6; Desert Chr./B.D. def. Bundy Canyon Chr. 15-3, 15-1, 15-4; Sherman Indian def. Mesrobian 15-1, 10-15, 15-1, 15-9; Cate def. Cuyama Valley 15-3, 15-3, 15-6.

Second Round: St. Margaret's def. Baptist Chr./H. 15-4, 15-13, 15-9; Templeton def. Calvary Chapel/D. 15-3, 15-4, 15-9; Windward def. Calvary Chapel/R. 15-6, 15-9, 15-5; Mammoth def. Owens Vly. 15-10, 15-8, 15-1; Coast Union def. Valley Chr./S.M. 15-3, 16-14, 15-13; First Lutheran def. Hillcrest Chr. 12-15, 10-15, 15-0, 15-11, 15-7; Hesperia Chr. def. Desert Chr./B.D. 8-15, 17-15, 15-12, 15-11; Cate def. Sherman Indian 15-5, 15-3, 15-9.

Quarterfinals: Templeton def. St. Margaret's 15-13, 9-15, 15-6, 16-14; Mammoth def. Windward 15-2, 10-15, 12-15, 15-12, 15-10; Coast Union def. First Lutheran 15-7, 15-10, 15-8; Cate def. Hesperia Chr. 15-4, 15-3, 15-11.

Semifinals: Templeton def. Mammoth 15-13, 15-9, 12-15, 10-15, 15-7; Cate def. Coast Union 15-13, 11-15, 15-8, 15-12.

Finals: Templeton def. Cate 15-13, 15-2, 10-15, 15-12.

BASKETBALL SURVEY

(Continued from page 8.)

II. PLAYOFF FORMAT

1. Would you favor geographical scheduling in order to cut down on travel? (Note: Bracketing in quarters would be based solely upon geography, protecting league champions to a degree, but league champions and second-place teams could meet as early as the second-round).
YES - 44.4% NO - 45%
2. Do you favor the current format of maintaining competitive equity in the playoff draws for each division, top to bottom?
YES - 82.2% NO - 13.4%
3. Should league champions (No. 1 league entry) be protected past the first round where travel is concerned?
YES - 44.3% NO - 42.8%
4. Do you favor neutral (approximately mid-way between competing schools) court sites, as opposed to the current "alternate" court sites for quarterfinal-round games and beyond?
YES - 48.7% NO - 47.2%

III. STATE TOURNAMENT

1. Are you in favor of participation in the State Playoff Tournament?
YES - 73.7% NO - 21.8%

CORPORATE SUPPORT

(Continued from page 3.)

the lowest in the United States.

"The CIF Southern Section is indeed pleased with the opportunity to work with such fine organizations as PacTel Cellular and Wilson Sporting Goods," said Stan Thomas, CIF Southern Section Commissioner of Athletics. "Their generosity and foresight is and will continue to be an asset to our schools directly, by offsetting membership dues and the high cost of conducting championship events. In these hard economic times, companies such as PacTel Cellular and Wilson Sporting Goods show a sincere desire to provide for the youth for the benefit of tomorrow."

PacTel Cellular and Wilson Sporting Goods join state-wide sponsors Reebok and Pepsi Cola along with section-wide sponsors Gatorade, Herff Jones, Conlin Bros., TLC Sportswear, Ford Motor Company, and the California Angels in the support of member schools and student athletes of the CIF Southern Section.

SOUTHERN SECTION CIF/REEBOK 1992 GIRLS TEAM TENNIS PLAYOFF RESULTS

DIVISION I

First Round: Peninsula def. Thousand Oaks 15-3; El Toro def. Newport Harbor 12-6; Santa Margarita def. Capistrano Valley 9-9 (77-75); Santa Barbara def. Camarillo 14-4; Dana Hills def. Agoura 17-1; Corona del Mar def. Beverly Hills 10-8; Westlake def. Dos Pueblos 12-6; San Marcos def. Mira Costa 15-3.

Second Round: Peninsula def. El Toro 15-3; Santa Barbara def. Santa Margarita 11-7; Dana Hills def. Corona del Mar 11-7; San Marcos def. Westlake 17-1.

Semifinals: Peninsula def. Santa Barbara 17-1; Dana Hills def. San Marcos 10-8.

Finals: Peninsula def. Dana Hills 18-0.

DIVISION II

First Round: Laguna Beach def. Fountain Valley 17-1; Foothill def. Apple Valley 15-3; Crescenta Valley def. La Canada 15-3; Calabasas def. Alhambra 12-6; Edison def. South Torrance 17-1; Redlands def. Costa Mesa 14-4; Marymount def. North Torrance 10-8; Diamond Bar def. Marina 9-9 (85-69); Marlborough def. Glendale 17-1; San Marino def. Nogales 17-1; Torrance def. Schurr 16-2; Estancia def. Villa Park 11-7; El Modena def. Laguna Hills 11-7; Rosary def. San Gabriel 10-8; Ayala def. Victor Valley 12-6; Arcadia def. South Pasadena 15-3.

Second Round: Laguna Beach def. Foothill 16-2; Calabasas def. Crescenta Valley 11-7; Edison def. Redlands 12-6; Diamond Bar def. Marymount 11-7; Marlborough def. San Marino 11-7; Estancia def. Torrance 10-8; El Modena def. Rosary 11-7; Arcadia def. Ayala 16-2.

Quarterfinals: Laguna Beach def. Calabasas 13-5; Edison def. Diamond Bar 9-9 (86-81); Estancia def. Marlborough 12-6; Arcadia def. El Modena 11-7.

Semifinals: Laguna Beach def. Edison 9-9 (78-74); Arcadia def. Estancia 11-7.

Finals: Laguna Beach def. Arcadia 12-6.

DIVISION III

Wild Card: Norco def. Moreno Valley 12-6; Louisville def. Canyon/C.C. 14-4; Fullerton def. Los Altos 14-4; Gahr def. Lakewood 11-7.

First Round: Los Alamitos def. L.B. Poly 17-1; Hart def. Chaminade 10-8; Cerritos def. Esperanza 11-7; Centennial/C. def. Sonora 13-5; Riverside Poly def. Brawley 11-7; Hemet def. Upland 10-8;

**SOUTHERN SECTION
CIF/REEBOK
1992 GIRLS TEAM TENNIS
CHAMPIONS**

DIVISION I
Peninsula

DIVISION II **DIVISION III**
Laguna Beach Harvard/
Westlake

DIVISION IV **DIVISION V**
Pasadena Yucaipa
Poly

Glendora def. Charter Oak 10-8; Palm Desert def. Canyon Springs 12-6; Sunny Hills def. Norco 16-2; Louisville def. Wilson/H.H. 15-3; J.W. North def. Central 13-4; St. Lucy's def. Temecula Valley 15-3; El Dorado def. Corona 12-6; Paramount def. Long Beach Wilson 10-8; Burbank def. Fullerton 14-4; Harvard/Westlake def. Gahr 18-0.

Second Round: Los Alamitos def. Hart 16-2; Centennial/C. def. Cerritos 12-6; Hemet def. Riverside Poly 9-9 (77-67); Palm Desert def. Glendora; Sunny Hills def. Louisville 11-7; St. Lucy's def. J.W. North 15-3; El Dorado def. Paramount 11-7; Harvard/Westlake def. Burbank 15-3.

Quarterfinals: Los Alamitos def. Centennial/C. 14-4; Palm Desert def. Hemet 13-5; St. Lucy's def. Sunny Hills 11-7; Harvard/Westlake def. El Dorado 12-6.

Semifinals: Los Alamitos def. Palm Desert 15-3; Harvard/Westlake def. St. Lucy's 9-9 (79-66).

Finals: Harvard/Westlake def. Los Alamitos 11-7.

DIVISION IV

Wild Card: Pioneer def. Glenn 11-7; Western def. Los Amigos 11-7.

First Round: Pasadena Poly def. Pioneer 18-0; San Jacinto def. Western 9-9 (104-98); Brea Olinda def. Barstow 13-5; Santa Ynez def. Bellflower 16-2; Righetti def. Thacher 13-5; La Serna def. Santiago 14-4; Pacific def. Beaumont 14-4; Quartz Hill def. Mountain View 18-0; San Luis Obispo def. St. Joseph/S.M. 17-1; Mayfield def. El Monte 14-4; Santa Fe def. Antelope Valley 13-5; Cate def. Arroyo 14-4; Lompoc def. Cabrillo 10-8; La Mirada def. San Geronio 15-3; La Quinta def. Murrieta Valley 14-4; Chadwick def. Savanna 16-2.

Second Round: Pasadena Poly def. San Jacinto 15-3; Brea Olinda def. Santa Ynez 13-5; Righetti def. La Serna 11-7; Quartz Hill def. Pacific 12-6; San Luis Obispo def. Mayfield 14-4; Cate def. Santa Fe 10-8; La Mirada def. Lompoc 13-5; Chadwick def. La Quinta 16-2.

Quarterfinals: Pasadena Poly def. Brea Olinda 15-3; Quartz Hill def. Righetti 12-6; San Luis Obispo def. Cate 12-6; Chadwick def. La Mirada 12-6.

Semifinals: Pasadena Poly def. Quartz Hill 13-5; San Luis Obispo def. Chadwick 10-8.

Finals: Pasadena Poly def. San Luis Obispo 10-8.

DIVISION V

First Round: Brentwood Bye; Norte Vista def. Bishop 16-2; La Reina def. Campbell Hall 13-5; Azusa def. Ramona Convent 11-7; South Hills def. Bishop Diego 15-3; La Sierra def. Whittier Christian 10-8; Chaffey def. Big Bear 15-3; Rim of the World def. Sierra Vista 15-3; Yucaipa def. Alta Loma 16-2; Cathedral City def. Covina 15-3; Etiwanda def. Yuca Valley 12-6; Bonita def. Whitney 10-8; Crossroads def. St. Bonaventure 11-7; Valley Chr./C. def. Montclair 16-2; Kern Valley def. Marshall 9-9 (77-60); Gladstone Bye.

Second Round: Brentwood def. Norte Vista 11-7; La Reina def. Azusa 17-1; South Hills def. La Sierra 13-5; Rim of the World def. Chaffey 15-3; Yucaipa def. Cathedral City 17-1; Bonita def. Etiwanda 11-7; Crossroads def. Valley Chr./C. 13-5; Gladstone def. Kern Valley 15-3.

Quarterfinals: Brentwood def. La Reina 12-6; South Hills def. Rim of the World 12-6; Yucaipa def. Bonita 14-4; Crossroads def. Gladstone 11-7.

Semifinals: Brentwood def. South Hills 13-5; Yucaipa def. Crossroads 10-8.

Finals: Yucaipa def. Brentwood 11-7.

SS-CIF/REEBOK 1992 GIRLS INDIVIDUAL TENNIS PLAYOFF RESULTS

SINGLES

First Round: Sandra De Silva (Pasadena Poly) def. Nikola Proskova (Los Altos) 6-0, 6-0; Anna Zaricki (Dana Hills) def. Brigid Joyce (Marymount) Default; Brandi Freudenberg (El Modena) def. Lindsay Wasserman (Harvard/Westlake) Default; Amanda Basica (Peninsula) def. Julie Banks (Victor Valley) 6-1, 6-2; Pam Trump (Arcadia) def. Neetu Manjunath (St. Lucy's) 6-2, 6-2; Erika Asmuss (Mater Dei) def. Jennifer Momi (Torrance) 6-2, 6-4; Laura Gross (Chaminade) def. Joyce Cruz (Rosary) 6-4, 6-2; Janet Lee (Peninsula) def. Kara Warkentin (San Marcos) 6-2, 6-3.

Quarterfinals: Sandra De Silva (Pasadena Poly) def. Anna Zaricki (Dana Hills) 6-1, 6-3; Amanda Basica (Peninsula) def. Brandi Freudenberg (El Modena) 6-4, 6-2; Pam Trump (Arcadia) def. Erika Asmuss (Mater Dei) 4-6, 6-2, 6-4; Janet Lee (Peninsula) def. Laura Gross (Chaminade) 6-2, 6-0.

Semifinals: Amanda Basica (Peninsula) def. Sandra De Silva (Pasadena Poly) 6-3, 7-5; Janet Lee (Peninsula) def. Pam Trump (Arcadia) 6-3, 6-1.

Finals: Janet Lee (Peninsula) def. Amanda Basica (Peninsula) 4-6, 6-4, 6-2.

DOUBLES

First Round: Amber Basica/Summer Redondo (Peninsula) def. Manya Wren/Lavinia Secore (San Geronio) 6-2, 6-0; Jackie Jocson/Jessica Castagnari (St. Lucy's) def. Victoria Sun/Sawako Nakamura (South Torrance) 7-5, 6-1; Jenny Chang/Jennie Canfield (Capistrano Valley) def. Andrea Hsu/Jennifer Yuan (San Marino) 6-2, 7-5; Natalie Grubb/Dana Mazza (San Marcos) def. Amy Winn/Janet Ahn (Sunny Hills) 7-5, 6-3; Brigitte Wallace/Cindy Brumfiel (Santa Barbara) def. Aimee Mori/Lindsay Barr (Torrance) 6-2, 6-2; Shera Wiegler/Kirsten Gross (Calabasas) def.

Barbie Bayless/Dana Rudolph (Sunny Hills) 1-6, 6-4, 6-3; Terri Hiete/Sally Pakinghorn (Marymount) def. Nina Basica/Nora Kapche (Fountain Valley) 7-5, 2-6, 6-2; Amanda Augustus/Jennifer Cohen (Peninsula) def. Kirsten Clark/Anne Roberts (Redlands) 6-1, 6-3.

Quarterfinals: Basica/Redondo (Peninsula) def. Jocson/Castagnari (St. Lucy's) 6-0, 6-1; Grubb/Mazza (San Marcos) def. Chang/Canfield (Capistrano Valley) 6-4, 5-7, 7-5; Wiegler/Gross (Calabasas) def. Wallace/Brumfiel (Santa Barbara) 6-3, 6-4; Augustus/Cohen (Peninsula) def. Hiete/Pakinghorn (Marymount) 6-0, 6-1.

Semifinals: Basica/Redondo (Peninsula) def. Grubb/Mazza (San Marcos) 6-1, 6-3; Augustus/Cohen (Peninsula) def. Wiegler/Gross (Calabasas) 6-1, 6-3.

Finals: Augustus/Cohen (Peninsula) def. Basica/Redondo (Peninsula) 4-6, 7-6, 6-2, (10-8).

SOUTHERN SECTION CIF/REEBOK 1992 WATER POLO PLAYOFF RESULTS

DIVISION I

First Round: El Toro def. Millikan 24-12; Newport Harbor def. Loyola 14-7; San Clemente def. Santa Ana Valley 17-9; L.B. Wilson def. Crespi 15-6; Harvard/Westlake def. Tustin 15-11; Foothill def. Dana Hills 13-10; Corona del Mar def. Villa Park 11-3; Capistrano Valley def. L.B. Poly 18-5.

Second Round: El Toro def. Newport Harbor 13-7; San Clemente def. L.B. Wilson 5-4; Harvard/Westlake def. Foothill 12-11 (OT); Corona del Mar def. Capistrano Valley 8-5.

Semifinals: El Toro def. San Clemente 13-11; Harvard/Westlake def. Corona del Mar 10-7.

Finals: El Toro def. Harvard/Westlake 10-9 (2OT).

DIVISION II

First Round: La Serna def. Arlington 18-8; Los Alamitos def. Muir 8-7 (OT); Santa Maria def. Thousand Oaks 7-6 (OT); Montebello def. Servite 10-8; Riverside Poly def. California 15-4; Rowland def. Bell Gardens 12-7; Glendale def. La Habra 9-6; Fountain Valley def. Cypress 12-7; Royal def. Righetti 16-1; Crescenta Valley def. Sonora 12-8; J.W. North def. Whittier 12-9; Marina def. Ayala 16-6; Sunny Hills def. Edison 8-6; Lompoc def. Agoura 22-9; Alhambra def. Baldwin park 20-11; Esperanza def. Canyon Springs 25-2.

Second Round: La Serna def. Los Alamitos 10-6; Montebello def. Santa Maria 9-5; Riverside Poly def. Rowland 16-9; Fountain Valley def. Glendale 16-8; Royal def. Crescenta Valley 16-5; Marina def. J.W. North 15-2; Lompoc def. Sunny Hills 9-8; Esperanza def. Alhambra 18-7.

Quarterfinals: La Serna def. Montebello 12-5; Riverside Poly def. Fountain Valley 12-8; Royal

**SOUTHERN SECTION
CIF/REEBOK
1992 WATER POLO
CHAMPIONS**

DIVISION I
El Toro

DIVISION II
Esperanza

DIVISION III
Costa Mesa

DIVISION IV
Los Amigos

def. Marina 11-10; Esperanza def. Lompoc 13-10.

Semifinals: Riverside Poly def. La Serna 6-5; Esperanza def. Royal 6-4.

Finals: Esperanza def. Riverside Poly 13-6.

DIVISION III

First Round: Costa Mesa def. Charter Oak 9-7; Indio def. Don Lugo 23-4; Cerritos def. El Segundo

18-13; Dos Pueblos def. Temple City 10-3; Mira Costa def. Laguna Beach 13-3; H.H. Wilson def. Upland 17-4; Magnolia def. La Canada 15-6; Cabrillo def. San Marcos 11-6; Walnut def. Palm Springs 18-6; Peninsula def. Downey 16-12; South Pasadena def. Fontana 22-16; Trabuco Hills def. Brea Olinda 15-7; Santa Ynez def. Buena 12-9; Valencia def. Hemet 9-6; Gahr def. Claremont 12-3; Santa Barbara def. Nordhoff 17-5.

Second Round: Costa Mesa def. Indio 13-5; Dos Pueblos def. Cerritos 11-6; Mira Costa def. H.H. Wilson 8-6; Cabrillo def. Magnolia 12-8; Walnut def. Peninsula 13-10; Trabuco Hills def. South Pasadena 13-12; Santa Ynez def. Valencia 10-6; Santa Barbara def. Gahr 22-12.

Quarterfinals: Costa Mesa def. Dos Pueblos 9-7; Mira Costa def. Cabrillo 11-7; Trabuco Hills def. Walnut 6-4; Santa Ynez def. Santa Barbara 12-9.

Semifinals: Costa Mesa def. Mira Costa 10-7; Trabuco Hills def. Santa Ynez 12-11.

Finals: Costa Mesa def. Trabuco Hills 14-9.

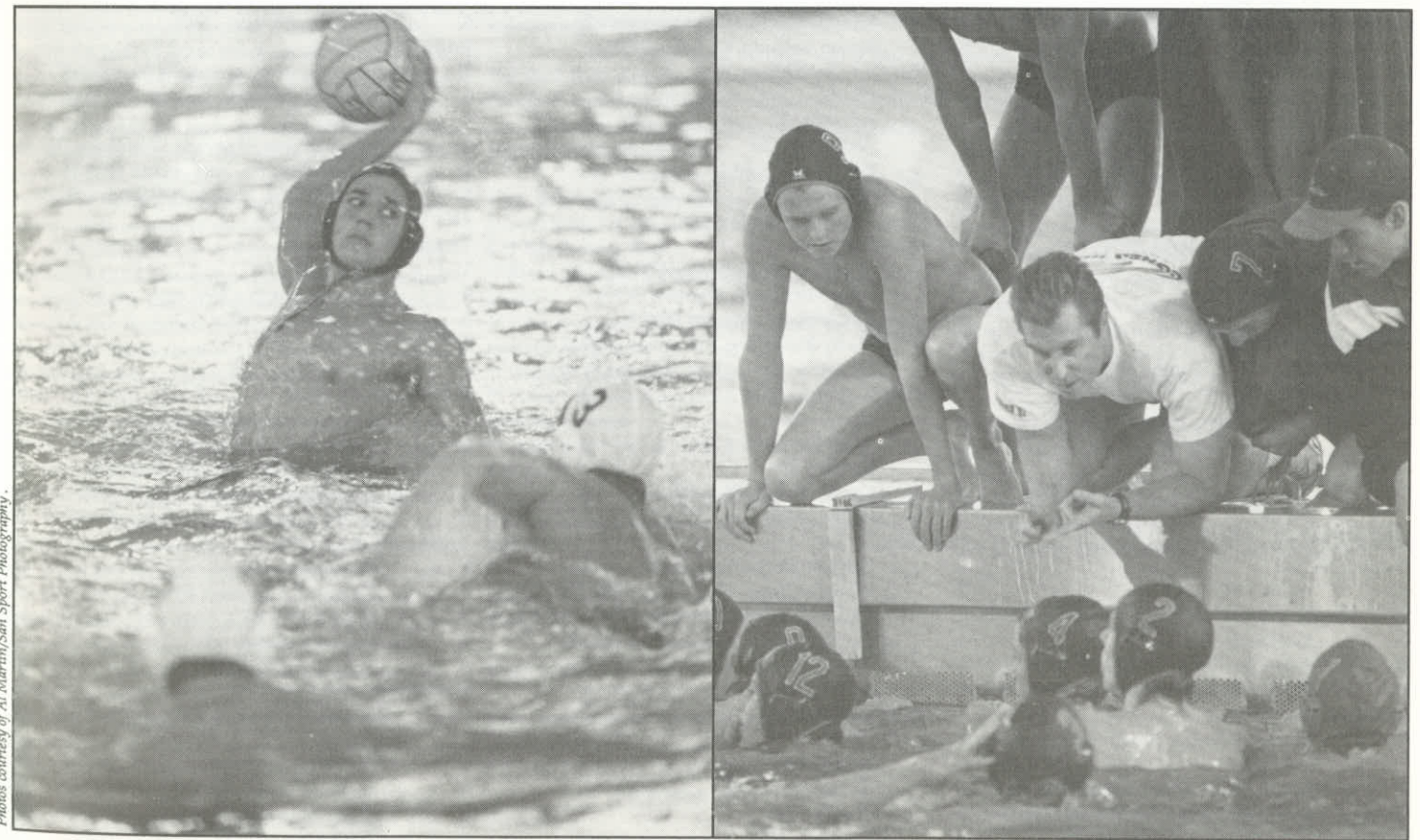
DIVISION IV

First Round: Los Amigos def. Chadwick 18-8; Etiwanda def. Pacific 14-2; La Puente def. La Salle 12-10; San Bernardino def. Santiago 24-8; San Dimas def. Kennedy 8-7; Jurupa Valley def. Alta Loma 11-5; Webb def. San Geronio 15-10; Bonita def. Pacifica 20-7.

Second Round: Los Amigos def. Etiwanda 14-4; San Bernardino def. La Puente 17-8; Jurupa Valley def. San Dimas 8-4; Bonita def. Webb 21-15.

Semifinals: Los Amigos def. San Bernardino 12-6; Bonita def. Jurupa Valley 12-7.

Finals: Los Amigos def. Bonita 11-7.



Photos courtesy of Al Martin/San Sport Photography.

SOUTHERN SECTION CIF/REEBOK 1992 BOYS/GIRLS CROSS COUNTRY RESULTS

DIVISION I - BOYS

- Team - I-AA**
1. Peninsula - 46
 2. Santa Ana - 66
 3. Saddleback - 68
 4. Redlands - 86
 5. Dana Hills - 92
- Individuals - I-AA**
1. Margarito Casillas, Hoover (15:09)
 2. Jim Cera, Upland (15:25)
 3. Jaime Bastidas, Eisenhower (15:28)
 4. Dan Minami, Peninsula (15:33)
 5. Tedros Berhane, Redlands (15:51)

- Team - I-A**
1. Thousand Oaks - 37
 2. Hart - 65
 3. Arroyo Grande - 89
 4. Rowland - 99
 5. Huntington Beach - 107

- Individuals - I-A**
1. Jaime Martinez, Orange (15:20)
 2. Eric Dunn, Arroyo Grande (15:23)
 3. Jeff Fischer, Thousand Oaks (15:29)
 4. Brett Strahan, Hart (15:37)
 5. Lui Baca, Rowland (15:44)

DIVISION II - BOYS

- Team - II-AA**
1. Agoura - 47
 2. Canyon/C.C. - 58
 3. Camarillo - 59
 4. Claremont - 87
 5. Burbank - 113
- Individuals - II-AA**
1. Ryan Wilson, Agoura (14:54)
 2. John Greene, Agoura (15:38)
 3. Mike Pendergraph, Norte Vista (15:43)
 4. Walter Christensen, Claremont (15:45)
 5. Bryson McRay, Camarillo (15:46)

- Team - II-A**
1. Katella - 35
 2. Crescenta Valley - 65
 3. Villa Park - 71
 4. Righetti - 77
 5. Bishop Amat - 95

- Individuals - II-A**
1. Mike Love, Katella (15:29)
 2. Mike Moreno, Katella (15:34)
 3. Angel Ibarra, Righetti (15:47)
 4. Delphino Resendiz, Katella (15:55)
 5. Terry Ghiselli, Crescenta Valley (16:09)

DIVISION III - BOYS

- Team - III-AA**
1. Ayala - 54
 2. La Puente - 76
 3. La Habra - 78
 4. Estancia - 79
 5. El Modena - 81
- Individuals - III-AA**
1. Marcus Ferrara, South Torrance (15:49)
 2. Rondie Gibbs, Rubidoux (15:53)
 3. Brendan Mahon, La Habra (16:05)
 4. Dylan Russel, Ayala (16:07)
 5. Jeff McLarty, Ayala (16:08)

- Team - III-A**
1. Newport Harbor - 39
 2. San Marino - 45
 3. Paso Robles - 92
 4. Covina - 95
 5. San Luis Obispo - 97
- Individuals - III-A**
1. Rodger Ciano, San Luis Obispo (15:44)
 2. Warren Wolf, San Marino (15:58)
 3. Jared Overton, Newport Harbor (16:02)
 4. Steve Monje, South Hills (16:02)
 5. Sky Peterka, Newport Harbor (16:03)

- DIVISION IV - BOYS**
- Team - IV-AA**
1. Nordhoff - 46
 2. Morro Bay - 51
 3. Salesian - 91
 4. Bell-Jeff - 97
 5. Fillmore - 101
- Individual - IV-AA**
1. Dave Mitchell, Morro Bay (15:44)
 2. Joey Taverner, Morro Bay (15:49)
 3. Javier Ramirez, Nordhoff (15:51)
 4. Jose Diaz, Bell-Jeff (15:53)
 5. Micah Robles, Nordhoff (16:09)

- Team - IV-A**
1. Maranatha - 46
 2. La Salle - 53
 3. Desert Christian - 82
 4. Ontario Christian - 82
 5. Flintridge Prep - 111

- Individual - IV-A**
1. Geoff Wullschlager, La Salle (16:04)
 2. Scott Lockhart, Ontario Christian (16:20)
 3. Marshall Bartlett, Poly (16:20)
 4. Joseph Garcia, Maranatha (16:32)
 5. Simon Santana, La Salle (16:43)

- DIVISION I - GIRLS**
- Team - I-AA**
1. Agoura - 32
 2. Peninsula - 42
 3. Wilson L.B. - 84
 4. Upland - 88
 5. Channel Islands - 125

- Individual - I-AA**
1. Am Skieresz, Agoura (17:24)
 2. Erica Sumi, L.B. Wilson (18:15)
 3. Kay Nekota, Agoura (18:18)
 4. Molly Mehlborg, Peninsula (18:31)
 5. Christine Lewis, L.B. Wilson (18:41)

- Team - I-A**
1. Irvine - 32
 2. Esperanza - 68
 3. Buena - 92
 4. Capistrano Valley - 95
 5. El Toro - 95

- Individual - I-A**
1. Kelly Roda, Irvine (18:36)
 2. Patricia Gibby, Thousand Oaks (18:39)
 3. Kim Mortensen, Thousand Oaks (18:42)
 4. Carrie Caulkins, Esperanza (18:50)
 5. Mindy Hagstrom, Arroyo Grande (18:50)

- DIVISION II - GIRLS**
- Team - II-AA**
1. Edison - 42
 2. Ocean View - 43
 3. Tustin - 100
 4. Corona - 102
 5. Canyon/A. - 110

- Individual - II-AA**
1. Elyse Homberger, Edison (18:30)
 2. Kim Nelson, Canyon/A. (18:44)
 3. Taryn Lawson, Ocean View (18:57)
 4. Christie Engesser, Ocean View (19:00)
 5. Claris Fernandez, Corona (19:01)

- Team - II-A**
1. Bishop Amat - 40
 2. Trabuco Hills - 63
 3. Righetti - 70
 4. Rio Mesa - 85
 5. Katella - 102

- Individual - II-A**
1. Molly Lawrence, Righetti (19:18)
 2. Tiffany Marra, Rio Mesa (19:18)
 3. Leanna Degazon, Bishop Montgomery (19:22)
 4. Andrea Steinberger, Mission Viejo (19:29)
 5. Jaime Vacairo, Katella (19:59)

- DIVISION III - GIRLS**
- Team - III-AA**
1. Laguna Hills - 34
 2. El Modena - 55
 3. Rubidoux - 84
 4. Newbury Park - 87
 5. St. Lucy's - 108

- Individual - III-AA**
1. Mayra Medina, Laguna Hills (18:16)
 2. Heather McGlone, Laguna Hills (19:00)
 3. Danielle Pekar, Rubidoux (19:04)
 4. Christina Dahlberg, El Modena (19:18)
 5. Sara Valdez, El Dorado (19:21)

- Team - III-A**
1. Corona del Mar - 25
 2. Newport Harbor - 66
 3. Santa Margarita - 97
 4. Chaminade - 102
 5. San Luis Obispo - 103

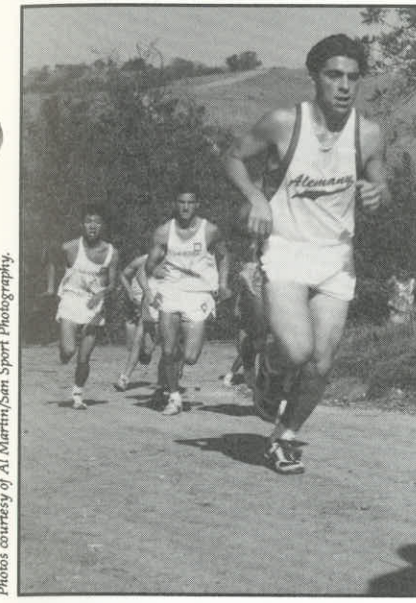
- Individual - III-A**
1. Tracy Clark, Corona del Mar (18:37)
 2. Dresden Howell, Corona del Mar (19:06)
 3. Jenny Wong, Harvard/Westlake (19:06)
 4. Carline Pengra, La Canada (19:11)
 5. Gwen Twist, Newport Harbor (19:38)

- DIVISION IV - GIRLS**
- Team - IV-AA**
1. Nordhoff - 30
 2. Laguna Beach - 71
 3. St. Anthony - 85
 4. Fillmore - 95
 5. Morro Bay - 109

- Individual - IV-AA**
1. Maribella Aparicio, Fillmore (19:32)
 2. Karen Bockel, Nordhoff (18:51)
 3. Monica Berlin, Nordhoff (19:28)
 4. Faye Roundy, Morro Bay (19:30)
 5. Jackie Guesno, St. Anthony (19:45)

- Team - IV-A**
1. Maranatha - 50
 2. Temescal Canyon - 64
 3. Mammoth - 67
 4. Murrieta Valley - 78
 5. Orange Lutheran - 104

- Individual - IV-A**
1. Amber Parkinson, Orange Lutheran (19:43)
 2. Sierra Domaille, Mammoth (19:48)
 3. Melinda Rau, Westridge (20:02)
 4. Tracy Maxwell, Maranatha (20:24)
 5. Trish Lowerre, Mammoth (20:40)



Photos courtesy of Al Martin/San Sport Photography.

SOUTHERN SECTION CIF/REEBOK 1992 CROSS COUNTRY CHAMPIONS

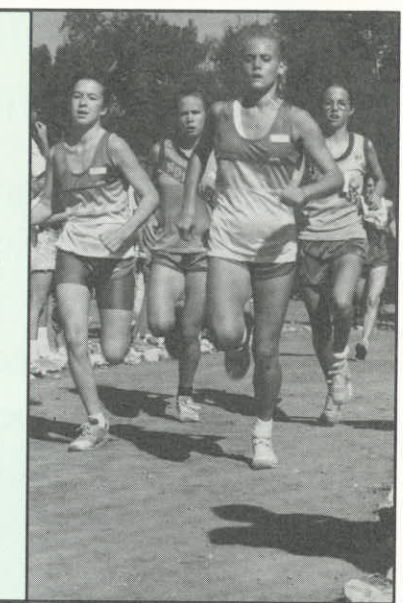
BOYS

- Peninsula
- Thousand Oaks
- Agoura
- Katella
- Ayala
- Newport Harbor
- Nordhoff
- Maranatha

- DIV. I-AA
- DIV. I-A
- DIV. II-AA
- DIV. II-A
- DIV. III-AA
- DIV. III-A
- DIV. IV-AA
- DIV. IV-A

GIRLS

- Agoura
- Irvine
- Edison
- Bishop Amat
- Laguna Hills
- Corona del Mar
- Nordhoff
- Maranatha



CIF SOUTHERN SECTION COUNCIL MEETING

(Continued from page 2.)

with reference to girls' participation in the pole vault event. Following discussion, it was moved, seconded and passed to direct the Southern Section delegates to the State Federated Council to support this modification of State By-Law 1501 allowing girls to participate in the pole vault event. Final action on this proposal will be taken at the October State Federated Council meeting.

7. GEOGRAPHICAL PLAYOFF PAIRING FORMAT -- Administrator Bill Clark reviewed with the Council an item dealing with a geographical playoff format, as opposed to the current format, with the emphasis on competitive equity. After much discussion, it was the decision of the Council that further data and study is needed on this issue before a final decision could be reached.

8. CIF-SS MENTORS' PROGRAM -- Chris Thomas, Director of Marketing, introduced Mike Radford who will be conducting a series of Mentor Workshops for approximately 50 schools in the Southern Section. The Mentors program is a motivational presentation focused on the dynamics of having students identify with positive role models as part of their life goals.

9. PRESIDENT'S UPDATE -- Dr. Gary Smidderks welcomed the Council to this, the first meeting of the 1992-93 school year and updated them on the National Federation summer meeting where the Executive Director, Brice Durbin, announced his resignation, effective January 1, 1993. Additionally, he announced with regret, the passing of two long-time CIF supporters, Jim Carmichael, former Executive Committee member and principal of Palmdale HS, and Ed Dilly, Assistant Principal of Burroughs (Ridgecrest) HS.

10. COMMISSIONER'S UPDATE -- Commissioner Stan Thomas discussed the school financial crisis and the importance of cost-saving measures on the part of the CIF-SS. He announced the Morningside HS forfeiture of their football championship in Division VIII and that Temecula Valley HS, the runner-up, will now be in all records of the organization, the new champion of Division VIII. Additionally, Commissioner Thomas announced that the CIF-SS staff will be meeting with each league during the year.

11. TREASURER'S REPORT -- Tom Triggs, treasurer, reviewed the preliminary auditor's report and the findings which reflected excellent

accounting procedures on the part of Shirley Frazier, the Director of Budget and Finance.

12. STATE CIF REPORT -- State Federated Council representative Dr. Tom Jacobson reviewed the following items from the May, 1992 State Federated Council meeting:

(a) In Executive Committee elections, Marie Ishida, Principal of Carmel HS in the Central Coast Section, was elected President-Elect of the Council.

(b) The following items WERE APPROVED:

(i) Modification of By-laws 1405 and 303, and Article 2, Section 25 (with San Diego Section amendment)

(ii) Top three grades be used when calculating C-BED enrollment figures

(iii) Post-playoff contests approved -- Football (Los Angeles/Southern) Baseball and softball (San Francisco/Oakland)

(iv) Employed Elissa K. Maas as strategic planning facilitator

(v) Recommendations 1-5 of the Ad Hoc Advisory Committee on Licensing and Corporate Support regarding implementation of the CIF Marketing Plan -

****Move ahead in sports marketing on a statewide basis**

**** Move cautiously, without injury to existing section programs**

**** Shall be externally driven**

**** Adopt the recommended three-step decision-making process**

**** Authorize up to \$350,000 of the State CIF Reserves**

(vi) CIF immediately move forward on a bidding package for an external marketing agent

(vii) Proposed 1992-93 Budget (including \$28,000 expenditure for strategic planning)

(viii) Multi-campus status for Madera High School

(ix) Strategic Planning Committee include the Orange County proposal as part of the strategic planning process

(c) The following items WERE DEFEATED:

(i) Formation of an Orange County Section

(ii) Employ Steel Marketing Partners

13. NATIONAL FEDERATION SUMMER MEETING REPORT -- Tom Triggs reported on the National Federation Summer Meeting held in Ft. Lauderdale, Florida.

14. CIF-SS ATHLETIC ADMINISTRATORS SYMPOSIUM -- Associate Commissioner Dean Crowley reminded Council members of the upcoming Athletic Administrators Symposium to be held at the Sequoia Athletic Club in Buena Park, with featured speakers Mike Radford, Col. Gene Harrison and former Olympic performer Pat McCormick.

15. TRACK AND FIELD REQUIREMENTS -- Associate Commissioner Dean Crowley noted that beginning with the upcoming 1993 Track and Field season, the hurdle height for the girls 100m event will be 33" and that a discus cage will be required for all competition.

16. SUPERINTENDENTS PLAYOFF SURVEY -- Dr. Gary Smidderks reviewed with the Council the result of the Superintendent Playoff Survey. It should be noted that there were 285 surveys mailed with 157 responding. The survey dealt with geographical or competitive equity in the playoffs.

17. STATE CIF REPORT -- Dr. Ken Gunn reviewed with the Council the progress being made at the State level with reference to strategic planning. It should be noted this will be an on-going process during the 1992-93 school year.

18. STATEWIDE MARKETING UPDATE -- Dr. Gary Smidderks reviewed a three-stage decision making plan with reference to CIF marketing. The plan which is currently in the formative stages, will be an item of discussion at the October meeting of the State Federated Council.

There being no further business to come before the Council, the meeting was adjourned at 11:45 a.m.

Submitted by

DEAN CROWLEY,
ASSOCIATE COMMISSIONER

Approved by

STAN THOMAS,
COMMISSIONER OF ATHLETICS

CIF SOUTHERN SECTION CORPORATE SPONSORS

Supporting Tomorrow's Stars Today

REEBOK: Primary Title Sponsor of State-Wide CIF.

PEPSI-COLA: Official Sponsor of State-Wide CIF.

CALIFORNIA ANGELS: Co-Sponsor of Academic Awards Program.

CONLIN BROS. SPORTING GOODS: Official Sporting Goods Team Dealer of the CIF-SS.

FORD MOTOR COMPANY: Co-Sponsor of Academic Awards Program.

GATORADE: Official Thirst Quencher of the CIF-SS.

HERFF JONES: Official Awards Company of the CIF-SS.

PAC TEL CELLULAR: Official Cellular Service Provider of the CIF-SS.

TLC SPORTSWEAR INC: Official Sportswear of the CIF-SS.

WILSON SPORTING GOODS: Official Ball of the CIF-SS.

Reebok 

PRIMARY TITLE SPONSOR STATE-WIDE

PEPSI 

OFFICIAL SPONSOR
STATE-WIDE

Gatorade
THIRST QUENCHER

CIF
SOUTHERN
SECTION

Wilson
The Official Ball . . .

TLC
SPORTSWEAR, INC.

PAC TEL
CELLULAR

CA

Conlin Bros.
Sporting Goods

Ford

HERFF JONES

RECOGNITION • EDUCATION • MOTIVATION