

The logo features the letters 'CIF' in a bold, stylized font. A laurel wreath is positioned behind the letter 'I'. Below the letters, the words 'SOUTHERN SECTION' are written in a smaller, sans-serif font.

SOUTHERN  
SECTION

# CIF-SS BULLETIN



VOL. 54, NO. 2

WINTER 1992



KRISTEN MULLIGAN, the Division III Co-Player of the Year at Palos Verdes last year, is a key reason why newly-opened Peninsula High has been the top ranked girls basketball team in the nation throughout the 1991-92 season. The Southern Section CIF/Reebok winter-sport playoff schedule appears on page 5.

**REEBOK, PRIMARY TITLE SPONSOR — STATE CIF**

**JACK-IN-THE-BOX, WILSON, SPORTSCHANNEL LEND SUPPORT**



## Wilson

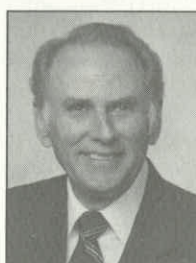
The Official Ball . . .



*Sewing High School Athletics  
Since 1913*

see CORPORATE page 3

## COMMISSIONER'S CORNER



### TIME FOR MAJOR STRUCTURAL CHANGE?

By Stan Thomas  
Commissioner of Athletics

Just after the current school year opened, the administrative staff of the CIF Southern Section made six regional presentations to member-school administrators, athletic directors and athletic secretaries, to instruct on the organization's purpose, function, rules, regulations and daily operation.

The basis for these sessions was not only to provide orientation from the CIF-SS staff point of view, but also to encourage communication and interaction with our constituency. In each of the regional meetings, we asked those in attendance to raise questions or make comments relative to section management.

Among the key areas we asked for input on were the relegating process and playoff groupings, and their inherent relation to travel. To our surprise, few, if any, shed much light on these subjects. Responses lead us to believe the schools are most interested in section-wide equity of competition, rather than travel considerations in formatting post-season tournaments.

Initiated by this past summer's discussion and notable media interest concerning a possible split of the section, the CIF-SS Executive Committee directed the office to address the issue of geographical realignment. To put this into effect, an ad hoc committee was formed with representation from each of the existing relegating areas.

The committee met on Sept. 18 to address the following items: Time and travel distance between schools; Impact of lost instructional time for athletic contests; Economic impact of current league alignments; and the relegating process itself, an issue determined to be unique within itself.

Like the CIF-SS staff, the ad hoc committee expressed a need for input from member schools, so it developed a survey that was forwarded to all Southern Section principals and district superintendents. Responses from the survey included 248 from member-school principals (approx- see COMMISSIONER'S CORNER page 16

## EXECUTIVE COMMITTEE MINUTES

### August 22, 1991

The August meeting of the CIF Southern Section Executive Committee was called to order by President-elect Dr. Gary Smidderks at 10:15 a.m. on Thursday, August 22, 1991 at the CIF Southern Section Offices in Cerritos. All members were present with the exception of Dr. Jim Fleming, Edna Herring, Bill McKinley, and Sheri Ross.

**1. MINUTES** — It was moved, seconded and passed to approve the minutes of the CIF-SS Executive Committee meeting of June 21, 1991.

**2. PRESIDENT'S UPDATE** — Due to the late arrival of President Tom Jacobson, President-elect Gary Smidderks reported on the recent administrative committee meeting; officials fees; Orange County Resectioning; and the CIF-SS building lease with the ABC Unified School District. Additionally, Dr. Smidderks reported that the theme for the upcoming school year will be "Fitness and Health."

**3. COMMISSIONER'S UPDATE** — Commissioner Stan Thomas commended State CIF President Dr. Robert Packer for the successful National Federation meeting held during July in San Diego, and reported to the Committee on the upcoming meetings of the Season of Sport Committee and the Geographical Realignment Committee, as well as the Athletic Administrators Regional Workshops; the State CIF Commissioners' meeting; the Superintendent and Board Members Symposium set for January 22, 1992; the Amateur Athletic Foundation track and field program; the 1991-92 basketball playoffs; the officials' fees contract due to expire at the end of the current school year; and a proposal from television station KCOP involving a post-season football game matching the LA City champion against the Southern Section Division I champion.

Additionally, Commissioner Thomas addressed the

Committee relative to the format of Southern Section appeals and investigatory hearings, and received a letter from Gayle Wayne of Management Support Service, who assessed, during this past summer, the CIF-SS press relations. The overall report was positive in nature.

**4. SUPERINTENDENT'S UPDATE** — Superintendent's Representative Cynthia Grennan discussed with the Committee the crisis in school finance and its impact upon all schools in California. It was also her feeling that the State should be looking to some sort of regional playoff format in State championships in order to cut travel costs for schools.

**5. TREASURER'S REPORT** — Ken Gunn, Treasurer, updated the Committee on income from t-shirt sales, the CIF-SS Golf Tournament, an update on the spring playoff income, and a preliminary audit report containing no major recommendations.

**6. NATIONAL FEDERATION SUMMER MEETING REPORT** — Maureen Sanders reported on the National Federation Summer Meeting held in San Diego and hosted by the State of California.

**7. STATE CIF REPORT** — Dr. Robert Packer, State CIF President, reported on the Scholar Athlete Recognition Day in Sacramento, and the passage of AB 273 authorizing the CIF to govern athletic programs in the State of California.

**8. LEGAL UPDATE** — CIF Attorney Andy Patterson reviewed the Montclair Prep/John Hazelton case and current litigation involving Harry Welsh, football coach of Canyon High School, Canyon Country.

**9. ORANGE COUNTY SECTION REPORT** — Barbara Wilson, Consultant, and Dr. Maury Ross, presented and discussed a feasibility study for an Orange County Section of the CIF. It should be noted see EXECUTIVE COMMITTEE page 6

## California Interscholastic Federation Southern Section

11011 Artesia Blvd. (90701) — P.O. Box 488 (90702)  
Cerritos, California  
(310) 860-2414 — (714) 826-5390 — FAX (310) 860-1692

### OFFICERS

Dr. Tom Jacobson, Principal,  
Corona del Mar High School, President

Dr. Robert M. Packer, Superintendent,  
Duarte Unified, Past-President

Dr. Gary Smidderks, Superintendent-Principal,  
Los Angeles Baptist High School, President-Elect

Dr. Ken Gunn, Principal,  
Walnut High School, Treasurer

Mr. Stan Thomas, Commissioner of Athletics

### BULLETIN EDITOR

Mr. Scott Cathcart  
Director of Media and Public Relations

Published Four Times Yearly  
By CIF-Southern Section

## CORPORATE

### JACK-IN-THE-BOX, WILSON AND SPORTSCHANNEL MAINTAIN COMMITMENT TO INTERSCHOLASTIC ATHLETICS

The CIF Southern Section will maintain long-time relationships with Jack-In-The-Box Restaurants, Wilson Sporting Goods and SportsChannel of Los Angeles, in the area of corporate support for its many interscholastic athletic activities during the 1991-92 school year.

Representatives of Jack-In-The-Box, the "Official Fast Food Restaurant of the CIF Southern Section," signed a one-year extension of a three-year contract with the CIF-SS last July. Its activities with the CIF-SS include provision of discount coupons on the backs of football and basketball playoff tickets and co-sponsorship of the Southern Section CIF/Reebok Football Championships. Jack-In-The-Box has been a loyal supporter of Southern Section activities since 1987.

"Jack-In-The-Box believes in supporting (its) most valuable customer: the youth of Southern California," points out Richard J. Wenz, Regional Marketing — Jack-In-The-Box Restaurants. "Our relationship with the Southern Section is a perfect vehicle in our movement to give something back to the schools of the area and their interscholastic athletic programs. We are

proud to continue supporting excellence and to be of benefit to high school athletic competition."

Wilson Sporting Goods, a member of the CIF-SS corporate sponsorship program since 1983, signed a five-year extension of its existing agreement this past summer. Recognized as "The Official Game Ball" of CIF Southern Section championship events, Wilson distributes complementary balls to the section finalists in football, boys and girls volleyball, boys and girls soccer, boys and girls basketball, boys and girls tennis, baseball and softball.

"Wilson's sponsorship of high school athletics began in the CIF Southern Section and has led to current involvement in 10 state programs," says Roger Gunderson, Vice President — Team Sports Marketing. "Wilson is proud of its service to Southern Section schools and appreciates their continued support of Wilson sports equipment."

Now in its third year of affiliation with the CIF Southern Section, SportsChannel is the official cable-television home of CIF-SS championship events. Since 1989, the network has covered finals in girls volley-

ball, football, boys and girls basketball and baseball. SportsChannel is Southern California's only all-sports premium cable channel, with over 140,000 subscribers in the greater Los Angeles market.

"SportsChannel is proud to televise the championship games of the California Interscholastic Federation, Southern Section," said Lynn Woodard, SportsChannel Vice President and General Manager. "We share the CIF-SS's commitment to excellence in athletics, competition and sportsmanship."

From the CIF Southern Section point of view, successful maintenance of corporate-sponsorship programs is crucial. Corporate sponsorship plays a major role in keeping Southern Section membership dues among the lowest in the United States.

"The CIF Southern Section is again pleased to work with these fine companies," notes CIF-SS Commissioner of Athletics Stan Thomas. "Their continued support and service indicates a sensitivity to the needs of youth throughout the geographic expanse of our section. We are proud of association with organizations who are focused on bettering the life of today for our citizens of tomorrow."

## OFFICE OPERATION

### ACCURATE, TIMELY ACCOUNTING PROCEDURES CRUCIAL TO FINANCIAL STABILITY OF ORGANIZATION

This section of the CIF-SS Bulletin is presented to bring to the attention of member schools, specific and timely topics designed to inform and enhance the flow of communication between CIF-SS schools and the CIF-SS Office. The following article relates to **FINANCIAL REGULATIONS** and was contributed by Shirley Frazier, Director of Budget and Finance.

Administrators and Athletic Directors should pay close attention to CIF-SS financial regulations regarding membership dues and playoff splits. Sometimes important guidelines are overlooked, resulting in mistakes and inconveniences both to schools and the CIF-SS Office.

As per CIF-SS By-laws, Article 1, Section 140, CIF-SS annual membership dues and sport fees are due and payable on October 1 of each year. Dues have remained at \$.23 per pupil enrolled for a number of years in the Southern Section in an effort to control costs to our member schools. Sport fees are assessed at the rate of \$15.00 per sport fielded. Remember, **Southern Section dues are separate and distinct from the State CIF assessment paid by member schools**, the purpose of which is

to assist with State legal and liability fees necessitated to fund rising costs of attorney and court fees due to litigation throughout the State.

CIF-SS **financial policy for playoffs** is described in the By-laws under Article 1, Sections 143 and 144. It is **mandatory** that schools charge admission for playoff games in the sports of football, boys and girls basketball, and boys and girls volleyball. Official playoff handbooks are published annually for these sports and contain valuable financial information and reporting procedures. A number of copies are distributed to each potential playoff school, one of which should be directed to the financial clerk. Home schools for playoff games carry major responsibilities in collecting revenue, paying expenses and distributing profits.

They need to pay close attention to new ticket accounting procedures which include completion of the ticket control sheet and attachment of it to the financial report.

No one enjoys filling out reports, but accountability is a matter of increasing importance. Allowable game expenses should be properly verified and visiting schools

need to submit mileage and pre-sales to the home school in a timely fashion. Approved meals and lodging can be verified by calling the CIF-SS office. Game profits are split one-fourth to each competing school and one-half to the CIF-SS. In profit situations, visiting schools should be reimbursed for allowable game travel, in addition to their profit share.

In the case of a game loss, the net loss is split equally by the competing schools. Each half is deducted from each school's expenses, thus giving a proportionate share of the gate revenue to each school. If questions or problems arise from these situations, schools should call the CIF-SS accounting department for assistance.

Remember, playoffs are an exciting and busy time for everyone. Paperwork can be a burdensome task, but if Playoff Handbooks are utilized efficiently and financial regulations are followed correctly, it can be an easy process. Please assist the CIF-SS Office by utilizing correct forms and procedures and don't hesitate to call us if you require assistance.

Good luck in the championships!

## CIF SOUTHERN SECTION COUNCIL MINUTES

### September 19, 1991

The September meeting of the CIF Southern Section Council was called to order by President Tom Jacobson at 9:10 a.m. on Thursday, September 19, 1991 at the Sequoia Athletic Club in Buena Park. All leagues were present with the exception of Camino Real, Experss, Horizon, Santa Fe and Victory.

**1. MINUTES** — It was moved, seconded and passed to approve the minutes of the CIF-SS Council meeting of April 25, 1991 as published in the June MONTHLY BULLETIN; the minutes of the Special Meeting of the CIF-SS Council of May 29, 1991 as published in the September MONTHLY BULLETIN; the minutes of the CIF-SS Executive Committee meeting of June 21, 1991 as published in the September MONTHLY BULLETIN; and the minutes of the CIF-SS Executive Committee meeting of August 22, 1991 as distributed to the Council.

**2. APPEAL HEARING PANEL PROPOSAL** — Dr. Tom Jacobson reviewed with the Council a proposal to change Rule 1109.4 in order to allow retirees of the Executive Committee to participate as panel members for hearings as scheduled by the CIF-SS Commissioner's Office. Due to the frequency of hearings conducted at the CIF-SS Office, it is not always possible to schedule current CIF-SS Executive Committee members to this important task. By utilizing former retired Executive Committee members, this will enhance and provide continued and prompt service for schools, parents and students and increases the number of available and knowledgeable persons to participate in this process. This is a non-action item and will be voted on at the January, 1992 meeting of the Council.

**3. AAF PROGRAM UPDATE** — Mr. Skip Stolley, Program Director for the AAF of Southern California, reviewed with the Council the AAF Coaching Education Program in the sports of soccer and track. Also introduced was Earl Engman, who is serving as the CIF-SS Liaison to the AAF and assisting in the arrangements for the upcoming track and field coaches workshops that will be held at regional sites throughout Southern California, with emphasis placed on organization, improvement of coaching techniques and program development.

**4. 1992-94 RELEAGUING** — Jim Douglas, Chairperson of the Releaguings Committee, presented the respective proposals for the 1992-94 releaguings cycle. Following discussion, area proposals for the Coast Area, Desert Area, Mt. Sac Area, Northern Area and the Orange County Area were approved.

In the **Citrus Belt Area** the original proposal was approved. An appeal from Glen Massengale, Principal of Victor Valley HS, with reference to their placement in the Citrus Belt League was heard by the Council. Speaking in opposition to Victor Valley High School's appeal and in support of the area proposal was Herman Zietlow, A.D., Cajon HS, and Karen Craig, Principal of San Bernardino HS. Following discussion, a motion to approve Victor Valley HS's appeal was defeated.

In the **Foothill Area**, the original proposal was approved. An appeal from Jack Cline, Principal Arroyo HS, Brian Hurst, Assistant Principal Burroughs HS (Burbank), Gary Jensen of Duarte HS, and Robert Maez, Principal Mountain View HS, was heard with reference to the five-team league configuration in the Foothill Releaguings Area, affecting the Foothill and Mission Valley Leagues. Mr. Leo Camalich, Principal

La Serna HS, representing the Whitmont League, spoke in support of the area releaguings proposal.

Following discussion, a motion to send the entire proposal back to the Foothill Area for reconsideration was defeated.

In the **Parochial Area**, the original proposal was approved. An appeal from Father Caruso, Principal St. Francis HS, was heard with reference to their placement in the Del Rey League. Following discussion, the appeal failed for lack of a motion from the floor.

In the **Private Area**, the original proposal was approved. An appeal from Ron Veech, Principal Riverside Christian HS, and President of the Metro League, was heard regarding the placement of Boys Republic in the Metro League. Don Bremer, Principal of Boys Republic, addressed the Council with background information as to the purpose and format of the school. Following discussion, a motion to approve the appeal of the Metro League was defeated.

**5. STATE FEDERATED COUNCIL REPORT** — Dr. Robert Packer presented the following agenda items for the November State Federated Council meeting, thus requiring action by the Southern Section Council in order to give Southern Section delegates voting direction:

(A) An increase in basketball travel allowance for State playoffs from \$1 to \$2 for State playoffs — vote to support

(B) A modification in the residency rule (by-law 216) which was a clarification of language — vote to support

(C) Modification of the age rule in football (by-law 1400) which was a clarification of language — vote to support

(D) CIF State wrestling entries allowing for gradual and equitable change over a number of years to enhance the quality of competition at the State tournament — vote to support

**6. KCOP FOOTBALL PROPOSAL** — Ken Gunn reviewed with the Council a proposal for a post-season football game between the LA City Section champion and the Southern Section Division I champion which would be televised by KCOP, with a rights fee plus income from ticket sales, parking, concessions, etc. on an escalating basis over a five-year period, with KCOP to arrange for advertising and promotion. Following discussion, a motion to approve was passed by the Council. It should be noted that due to the fact that this is a post-season event, the final approval must come from the State CIF.

**7. CIF OFFICE FACILITY** — Ken Gunn reviewed with the Council the expiration of the 25-year lease with the ABC Unified School District for the CIF Office Building currently housed on the Gahr High School campus. With the expiration of the lease, a study by both the CIF-SS Office and the Executive Committee has borne out the fact that it may be in the best interests of the Section to explore alternative measures to leasing, which would provide for the Section for years to come, a long-term investment. The Executive Committee, at their August, 1991 meeting, felt that it would be appropriate for the Southern Section to investigate and proceed with purchasing property and building a facility, applying generally the same number of dollars for leasing to the purchase of our own building site. Following discussion, a motion to authorize the Executive Committee to move forward with this proposal was approved.

**8. SOUTH COAST LEAGUE WATER POLO PROPOSAL** — Mr. Don Martin, Principal of El Toro HS, representing the South Coast League, presented a proposal to increase the playoff structure of 4A water polo from a 16 to 24 team bracket, thus allowing 4 entries from each league into the playoffs. Following discussion, a motion to approve the proposal was defeated.

**9. PRESIDENT'S UPDATE** — Dr. Tom Jacobson reviewed with the Council the National Federation Summer Meeting held in San Diego and hosted by the CIF; the current status of hearings and litigation in the Southern Section; and the importance that all those involved in interscholastic athletics of upholding the integrity of the rules and regulations of the organization.

**10. COMMISSIONER'S UPDATE** — Stan Thomas discussed regional playoff concepts; the officials' fees contract which will end this year; the upcoming athletic administrators regional workshops; and concerns relative to the number of entries from leagues in the basketball playoffs. Additionally, Commissioner Thomas announced that the CIF-SS Office was undertaking the process of grant writing in order to provide additional funds to enhance the programs of our member schools.

**11. TREASURER'S REPORT** — Ken Gunn, Treasurer, reviewed the recently completed auditor's report, and the findings reflected excellent accounting procedures on the part of Budget and Finance Director Shirley Frazier.

**12. STATE CIF REPORT** — Dr. Robert Packer reported on the recently passed Assembly Bill 273 granting the CIF the right to govern high school athletics in the State of California; current sex equity issues; and the State CIF Doers and Dreamers program sponsored by Disney.

**13. NATIONAL FEDERATION SUMMER MEETING** — Executive Committee member Maureen Sanders reported on the National Federation Summer Meetings held in San Diego. It should be noted that the summer meetings were hosted by California and were determined to be an overwhelming success.

**14. ORANGE COUNTY SECTION REPORT** — Barbara Wilson, Consultant, presented and discussed a feasibility study for an Orange County Section of the CIF. It should be noted that the Orange County Superintendents are reviewing the feasibility study at this time and exploring the pros and cons of an Orange County Section.

**15. FITNESS AND HEALTH** — Scott Cathcart, Media Director, announced to the Council that the theme for the upcoming year will be "Fitness and Health," with information forthcoming from the Southern Section Office via bulletins, literature, etc.

**16. SUPERINTENDENT/BOARD MEMBER SYMPOSIUM** — Associate Commissioner Dean Crowley announced that the Office will conduct a Symposium for superintendents and board members on Wednesday, January 22, 1992 to orientate board members and superintendents with the day-to-day operations of the CIF-SS. More information will be mailed to principals and superintendents regarding this very important Symposium.

**17. SEASON OF SPORT COMMITTEE** — Ron Barney, Chairman of the Season of Sport Committee see COUNCIL MINUTES page 13

## SOUTHERN SECTION CIF/REEBOK WINTER-SPORT PLAYOFFS, CHAMPIONSHIPS UPCOMING

Culmination of the winter season of sport is always an exciting time of year for the CIF Southern Section, which will administrate championship playoff activities in boys and girls basketball, boys and girls soccer and wrestling in the coming weeks.

A highlight of the 1991-92 winter-sport playoff season will be the first-ever Southern Section CIF/Reebok Team Wrestling Championships, which will pit full teams in four divisional 16-team tournament brackets. The team prelims are scheduled for Feb. 19 and the finals for Feb. 27. Traditional individual wrestling champions and tournament team champions will also be determined in divisional competition. The four divisional prelims are set for Feb. 21, followed by championship finals Feb. 22. The Southern Section will qualify its representatives to the CIF/Reebok State Championship meet in the Southern Section CIF/Reebok Masters Meet, slated for Feb. 29. The state championships will be held at the University of Pacific in Stockton on March 6-7.

Boys post-season basketball competition will open with qualifying-round games Feb. 18, followed by playoff prelims on



### IMPORTANT REMINDER:

League Coordinators are reminded that league entries for the 1991-92 winter-sport playoffs must be reported to the CIF-SS Office no later than Saturday, Feb. 15. Pairings will be released for boys basketball on Sunday, Feb. 16, and in all other winter sports on Monday, Feb. 17.

Feb. 21, 25, 28 and March 3. The Southern Section CIF/Reebok Boys Basketball Championships will be conducted March 6-7. In girls competition, the playoff rounds are slated for Feb. 19, 22, 26, 29 and March 4, with the Southern Section CIF/Reebok Girls Basketball Championships also set for March 6-7. A total of 10 Southern Section champions will be determined in both boys and girls competition. The CIF/Reebok State Championship Tournament prelims will be held March 10, 12 and 14, followed by finals in each of the five boys and girls divisions March 20-21 at Arco Arena in Sacramento.

The Southern Section CIF/Reebok Boys and Girls Soccer Championships will culminate March 6-7 in a nine-match (five boys divisions, four girls divisions) extravaganza at Gahr High School's Hanford Rants Stadium in Cerritos. The preliminary rounds will be conducted in a split-schedule (by division) format, which run Feb. 20 through March 3.

## CIF-SS SUPERINTENDENTS SYMPOSIUM

The administrative staff of the CIF Southern Section will conduct a Superintendent-School Board Symposium on Wednesday, Jan. 22, at the Sheraton Cerritos Hotel Towne Center. District administrators and school-board members throughout the CIF Southern Section are encouraged to be in attendance.

"Know Your CIF Southern Section" is the theme of the event, which is intended to provide a district-level education on the purpose and function of the organization as it relates to interscholastic athletic administration.

The symposium will begin with a registration and get acquainted period between 8:30 and 9 a.m., followed by a welcome from CIF-SS President Tom Jacobson, Principal of Corona del Mar High School. An overview of the CIF Southern Section will follow from Dr. Lou Joseph, Superintendent of the South Pasadena Unified School District and former CIF-SS Administrator.

Topical issues for the seminar sessions to follow will include: "Governance - How the Organization Functions" by Dr. Robert Packer, Superintendent of the Duarte Unified School District, Past-President of the CIF-SS Council and current President of the State CIF Federated Council.

"AB 273 - Impact on School Boards" by Cynthia Grennan, Superintendent of the Anaheim Union High School District and member of the CIF-SS Executive Committee and Jim Olson, California School Boards Association and State CIF Executive Committee Member.

"Releaguings - Process and Effect" by Jim Douglas, Principal of Schurr High School and Chairman of the CIF-SS Releaguings Committee.

"The Questions You Always Wanted Answered" moderated by Dr. Gary Smid-derks, Principal of Los Angeles Baptist High School and President-Elect of the CIF Southern Section Council, with panel members Stan Thomas, CIF-SS Commissioner of Athletics; Andy Patterson, CIF-SS Attorney; and Dr. Jacobson.

The event will be concluded with a keynote luncheon address by Mollie McGee, School Board Member of the Anaheim Union High School District.

Registration information concerning the Superintendent-School Board Symposium was mailed to the appropriate agencies from the CIF-SS Office in November. For further information on the program contact the office of Associate Commissioner of Athletics Dean Crowley during regular CIF-SS Office hours.

# MINUTES OF CIF-SS EXECUTIVE COMMITTEE MEETING

## October 24, 1991

The October meeting of the CIF Southern Section Executive Committee was called to order by President Tom Jacobson at 1:20 p.m. on Thursday, October 24, 1991 at the CIF-SS Office. All members were present.

**1. MINUTES** — It was moved, seconded and passed to approve the minutes of the special meeting of the CIF-SS Executive Committee of October, 2, 1991.

**2. PRESIDENT'S UPDATE** — Dr. Tom Jacobson announced that due to discussions with the Saddleback Unified School District by Commissioner Stan Thomas, Sheri Ross will continue her role as Girls' Athletic Directors' Representative on the CIF-SS Executive Committee. Additionally, Dr. Jacobson reviewed the recent National Federation Section 7/8 Meeting, and procedures dealing with Section hearings. Dr. Jacobson commended Chris Thomas for his efforts in the new grant writing project, which provided a grant of \$5,000 from the Murdy Foundation to underwrite the cost of the Academic Awards Program.

**3. COMMISSIONER'S UPDATE** — Commissioner Stan Thomas reviewed with the Committee the regional workshops being held for athletic administrators and school secretaries and finance clerks, the purpose of which is to better communicate with school personnel and acquaint them with day to day functioning of the CIF-SS Office. He also reviewed the upcoming Superintendent/Board Member Symposium set for January 22, 1992; the KCOP Football Television Proposal; and discussions with Yuma, Arizona schools and membership in the CIF-SS. The Commissioner presented an addendum to the sick leave provisions in the Employee Handbook which was approved by the Executive Committee.

**4. CROSS COUNTRY PROPOSAL** — Associate Commissioner Dean Crowley and Tom Coffey, representing the Southern California Cross Country Coaches Association, reviewed with the Committee a proposal which would allow the Southern Section Office to invite selected, ranked cross country teams to the CIF championships. It should be noted that those teams invited would be teams that showed potential for State championship competition and were in different divisions than other schools entered from their league. Following discussion, it was moved, seconded and passed to approve the proposal.

**5. GIRLS' ATHLETIC DIRECTORS' UPDATE** — Sheri Ross, Girls AD Representative, informed the Committee that the National Federation Athletic Directors Conference will be held in Orlando, Florida, with the theme, "Sportsmanship and Ethics." The State AD Conference will be held on April 2-5, 1992 in Palm Springs, with the theme, "At Risk Kids and At Risk Schools and Sports." Additionally, Ms. Ross discussed the importance of communication with school boards and superintendents regarding the CIF and the school athletic programs.

**6. BOYS' ATHLETIC DIRECTORS' UPDATE** — Rich Ramirez, Boys AD Representative, commended the CIF-SS staff with reference to the Regional Workshops. He reported on the Citrus Belt AD meeting and the strong support received from the Pepsi Corporation for the high school athletic programs.

**7. SUPERINTENDENTS' UPDATE** — State Superintendent Representative Jim Fleming discussed concerns relative to the image of CIF and the importance of broad areas of communication from coach to Athletic Director; athletic director to principal; and most important, principal to superintendent. In this day and time of financial crisis, it is important that

superintendents and school boards be informed as to the direction and scope of high school athletic programs.

**8. TREASURER'S REPORT** — Ken Gunn, Treasurer, reviewed the recently completed auditor's report and the findings which reflected excellent accounting procedures on the part of Budget and Finance Director Shirley Frazier.

**9. STATE CIF REPORT** — Tom Jacobson reported on recent legislation affecting the CIF which include AB925. This bill would specify that a battery committed against a sports official before, during or after an interscholastic, intercollegiate or any other organized amateur or athletic contest shall be punishable by a fine of at least \$2,000 or by at least one year in the county jail or both.

AB273 gives jurisdiction to the California Interscholastic Federation (CIF) for the administration of the secondary school athletic program.

**10. PERS REPORT** — Director of Budget and Finance Shirley Frazier reviewed with the Committee the Public Employees Retirement System (PERS).

**11. FOOTBALL GOAL POSTS** — Administrator Bill Clark reviewed with the Committee a National Federation Football Rule which allows schools to play on collegiate fields, that by NCAA rule have the narrow goal posts. It should be noted that currently, the community colleges in California have not adopted this new NCAA rule. Following discussion, it was

### EXECUTIVE COMMITTEE — Aug. 22, 1991

(Continued from page 2)

that the Orange County Superintendents are reviewing at this time the feasibility study and exploring the pros and cons of an Orange County Section. The purpose of the meeting was to share information gathered by Barbara Wilson on behalf of the Orange County Superintendents. At this time, no decision has been made by those in Orange County to go forward.

**10. ATHLETIC SAFETY COMMITTEE** — Administrator Karen Hellyer reported on the preliminary planning of the Athletic Safety Committee to provide the Section with a workshop for team physicians. This program would be conducted by the CIF-SS Staff, a selected doctor, and a certified trainer, with a target date set for March or April of 1992.

**11. TRACK AND FIELD SANCTIONED INVITATIONAL** — Associate Commissioner Dean Crowley reviewed with the Committee a proposed invitational track meet to be held in conjunction with the LA City Section as part of the UCLA/USC dual meet in March of 1992. It should be noted that this invitational will not be direct competition between the LA City Section and the Southern Section, but a showcase event of the best athletes. As provided in Rule 525, it was moved, seconded and passed to approve this activity for Southern Section track and field athletes.

**12. NEW MEMBERSHIP** — It was moved, seconded and passed to approve membership for the following schools: CALVARY CHRISTIAN HS (BISHOP), PALM SPRINGS CHRISTIAN HS (PALM SPRINGS), and STONERIDGE PREP (TARZANA). Membership for Corona Christian HS, Ventura County Christian HS and Yago Christian HS (Garden Grove) were tabled, while the application for Grace Christian HS (Riverside) was denied. Approval of member-

ship is contingent upon the appropriate administrative personnel attending one of the fall Athletic Administrators Regional Workshops.

**13. SOUTHERN SECTION SITE ACQUISITION** — Mr. Gene Emmons of the Padelford Group met with CIF-SS Executive Committee members to explore alternatives relative to the current status of our land lease with the ABC Unified School District and future plans for the CIF-SS Office.

After reviewing all of the options, it was moved, seconded and passed by the Executive Committee that it would be in the best interests of the Section to purchase an appropriate parcel of land and construct an office building which would be owned by the CIF Southern Section.

It was further directed by the Committee that Commissioner Thomas and Mr. Emmons begin negotiations to determine the availability of selected property.

Further, it was the recommendation of the Committee that the Commissioner develop a rationale and pertinent facts with regard to land purchase and building construction in comparison with long-range lease agreement with the ABC Unified School District. This proposal will be presented to the Council at the meeting of September 19, 1991 for their review and consideration, with a recommendation by the Executive Committee to go forward with the plan to build a CIF-SS Office rather than negotiate a long-term lease.

There being no further business to come before the Executive Committee, the meeting was adjourned at 5:42 p.m.

Submitted by  
DEAN CROWLEY  
ASSOCIATE COMMISSIONER

Approved by  
STAN THOMAS  
COMMISSIONER OF ATHLETICS

moved, seconded and passed to allow schools to play on university fields where the goal posts do not meet National Federation football rule standards. Additionally, the goal post width will not be a factor in the criteria for the Office to approve a field as a playoff site for football.

**12. RIO HONDO PREP** — Commissioner Stan Thomas reviewed the KARE youth league with the Committee.

**13. ATHLETIC SAFETY COMMITTEE** — Administrator Karen Hellyer updated the Committee on the proposed spring clinics for athletic team doctors that will be conducted by the Athletic Safety Committee. The three sites selected will be Orange County, Riverside and Ventura.

**14. LEGAL UPDATE** — Following discussion, it was moved, seconded and passed to go into Executive Session to review existing litigation with attorney Andy Patterson.

Following the conclusion of the Executive Session, it was moved, seconded and passed to return to open session.

Following discussion, it was moved, seconded and passed, to appeal the court decision in the Canyon (CC) HS/Welch matter. Additionally, it was moved, seconded and passed to direct the Commissioner and Attorney Andy Patterson to issue a press release to explain the relevant issues regarding the Canyon/Welch case.

See EXECUTIVE COMMITTEE page 20

## HEALTH AND FITNESS

# CENTER OF POWER: THE IMPORTANCE OF TORSO STRENGTH

by Jean Barret Holloway, MA, CSCS

The quality of play in almost any sport, from football and baseball to track and tennis, can benefit from a strong torso. It's hard to stay balanced during running and jumping when the torso flops. For bats to be quick and balls to fly hard, the force that starts with a thrust of the hips and legs must transfer through the link of a strong, tight torso to the arms and then to the bat, racquet, or ball. Because the torso is this central link, strength training coaches call it the center of power.



### INJURY PREVENTION

Besides contributing to sport competence, a strong torso is also vital to general fitness and health. The everyday posture of the pelvis, for example, is controlled by a balance of tensions among its attaching muscles. The abdominal muscles pull up and the hip flexor muscles pull down on the front of the pelvis, while the spinal erectors pull up and the hip exten-

sor muscles pull down on the back of the pelvis. Weak abdominals and foreshortened hip flexors often result in a swayback posture because the pelvis can't be held level. Proper stretching and strengthening can improve this.

Strong abdominals are especially important in preventing back injuries. During quick, forceful movements in sports and many everyday tasks, the abdominals should be strong enough to contract at crucial moments and cause a brief increase in internal pressure within the torso. This pressure, the kind you make if you punch yourself in the stomach, supports the spine.

### MOTIVATION

Tell your athletes how a strong torso can help them play better and more safely. Try to make torso exercises fun — never use exercise as a punishment unless you want to cause athletes to hate it and avoid it. Use goal-setting to encourage improvement. A group doing torso exercises (coach included!) can start together at the BLOB level and progress through SOFTSHELL to HARDSHELL to ROCK. The harder the exercise and the more sets done, the higher the level achieved. A chart or bulletin board with polaroids pinned under the appropriate labels can track individual im-

provement in a good-natured way.

### A SAMPLE WORKOUT

Torso exercises can be included as part of the warmup or cooldown of a daily practice, with stretching to follow. Try a 5 minute circuit program which switches between a set of torso front exercises and a set of torso back exercises. Three sets of 10-15 repetitions for each exercise is a good goal to aim for. Here are example exercises for torso front and back:

**Abdominal crunches:** lie on your back and bend your knees, hands at your temples. Use a towel or inexpensive tatami mat if the surface feels hard or wet. Slowly bring head and shoulders off the floor, pressing low back into floor; slowly go back down. Slower is harder. When you can do 10-15 in a row, hold a 5 pound weight behind your head to make it harder instead of doing more repetitions.

**Back hyperextensions:** lie face down, arms over head. Try to bring arms and head and legs off the floor at the same time in a "superman" position. Hold a moment at the top, then bring them all the way back down. Slower is harder.

A little regular attention will give you and your athletes a torso which is truly the center of power instead of the weak link.

## AMATEUR ATHLETIC FOUNDATION CONDUCTS COACHING CLINICS FOR TRACK & FIELD



In continuance of its highly-successful "Partnership for Coaching Education" program, inaugurated in 1989 to assist in raising the quality of interscholastic athletic programs throughout Southern California, the Amateur Athletic Foundation of Los Angeles will conduct 12 two-day clinics in track and field to open the new year.

Working in conjunction with the CIF Southern, Los Angeles City and San Diego Sections and encompassing over 650 schools throughout the eight southern-most counties of the state, the program provides area high school coaches with exemplary instruction from the best personnel possible. The AAF-CIF program began with soccer instruction two years ago and has been expanded to include track and field for a first time this winter. A pilot track and field program involving 100 selected schools was conducted in February of 1991, in preparation of the clinic-style instructional program for the full complement of Southern California high schools beginning this month.

"We had an overwhelming positive response to our pilot program in track and

field last year," points out Skip Stolley, Program Associate of the AAF. "We're excited about the potential impact this program can have in revitalizing high school track and field in Southern California."

The track and field clinic schedule opens Jan. 11-12 and Jan. 18-19 at Arcadia High School and Trabuco Hills High School in Mission Viejo; Jan. 25-26 and Feb. 1-2 at Birmingham High School in Van Nuys and UC Riverside; Feb. 8-9 and Feb. 15-16 at Rio Mesa High School in Oxnard and Mt. Carmel High School in San Diego.

"With progress in two of the largest participation sports in the CIF, 1992 will position the AAF program at the brink of being the nation's largest training program for high school coaches," added Stolley.

The Amateur Athletic Foundation of Los Angeles, a legacy of the 1984 Los Angeles Olympic Games, is committed to benefit youth sports programs by creating and funding its own programs and by operating the nation's largest and most up-to-date sports resource center. Located at 2141 West Adams Blvd. in Los Angeles, the resource center includes an extensive sports library, including research materials, periodicals and the world's largest collection of sports instructional films. The center is available for use by coaches, athletes and members of the media. At last count, the AAF was involved in the operation of over 200 programs to benefit youth sports in Southern California. One of the organization's most important services to CIF Southern Section member schools and student-athletes is its annual organization and conduct of "All-CIF-SS" player selections, their subsequent release and award ceremonies.

For further information and registration materials regarding the AAF-CIF Partnership for Coaching Education, contact the Amateur Athletic Foundation at (213) 730-9600.

# SOUTHERN SECTION CIF/REEBOK 1991 FOOTBALL PLAYOFF RESULTS

## DIVISION I

**FIRST ROUND:**  
Eisenhower 49  
Millikan 15  
Canyon/C.C. 35  
Santa Ana 13  
L.B. Wilson 17  
Riverside Poly 14  
Antelope Valley 13  
Bishop Amat 10  
Loyola 34  
Saugus 24  
Edison 13  
L.B. Poly 6  
Mater Dei 34  
Quartz Hill 8  
Fontana 21  
Marina 13

**QUARTERFINALS:**  
Eisenhower 38  
Canyon/C.C. 6  
L.B. Wilson 24  
Antelope Valley 12  
Loyola 20  
Edison 13  
Mater Dei 46  
Fontana 16

**SEMIFINALS:**  
Eisenhower 39  
L.B. Wilson 7  
Mater Dei 35  
Loyola 21

**FINALS:**  
Mater Dei 35  
Eisenhower 14

## DIVISION VI

**FIRST ROUND:**  
Valencia 44  
Gladstone 0  
Newport Harbor 35  
Buena Park 14  
Woodbridge 19  
Brea Olinda 14  
Rancho Alamitos 29  
Azusa 6  
Tustin 24  
Troy 7  
Bassett 19  
Pacifica 10  
Savanna 14  
Sunny Hills 0  
University 7  
Garden Grove 0

**QUARTERFINALS:**  
Valencia 28  
Newport Harbor 0  
Woodbridge 17  
Rancho Alamitos 14  
Tustin 28  
Bassett 0  
University 34  
Savanna 0

**SEMIFINALS:**  
Valencia 48  
Woodbridge 14  
Tustin 14  
University 6

**FINALS:**  
Valencia 27  
Tustin 7

## DIVISION II

**FIRST ROUND:**  
Rio Mesa 10  
Royal 7  
Muir 28  
Downey 6  
Ventura 43  
Arcadia 10  
Irvine 24  
Simi Valley 7  
Thousand Oaks 39  
San Marcos 14  
Dominguez 15  
Mission Viejo 13  
Dana Hills 21  
Buena 7  
Glendale 28  
Paramount 14

**QUARTERFINALS:**  
Muir 27  
Rio Mesa 10  
Irvine 37  
Ventura 18  
Dominguez 49  
Thousand Oaks 13  
Dana Hills 26  
Glendale 7

**SEMIFINALS:**  
Irvine 27  
Muir 17  
Dana Hills 35  
Dominguez 6

**FINALS:**  
Irvine 22  
Dana Hills 11

## DIVISION VII

**FIRST ROUND:**  
Artesia 44  
San Marino 21  
Righetti 44  
St. Anthony 13  
Laguna Hills 38  
El Segundo 6  
Temple City 21  
San Luis Obispo 12  
Serra 14  
Century 12  
La Mirada 26  
South Pasadena 20  
Trabuco Hills 42  
St. Francis 21  
Arroyo Grande 24  
Glenn 6

**QUARTERFINALS:**  
Righetti 35  
Artesia 33  
Laguna Hills 31  
Temple City 17  
La Mirada 20  
Serra 17  
Trabuco Hills 28  
Arroyo Grande 10

**SEMIFINALS:**  
Laguna Hills 34  
Righetti 7  
Trabuco Hills 24  
La Mirada 20

**FINALS:**  
Laguna Hills 35  
Trabuco Hills 28

## DIVISION III

**FIRST ROUND:**  
Esperanza 50  
Santa Monica 14  
Villa Park 21  
Crespi 14  
Loara 29  
Orange 7  
Schurr 20  
Peninsula 6  
Hart 33  
El Dorado 26  
Chaminade 25  
El Modena 24 (OT)  
Los Alamitos 31  
Burbank 0  
Hawthorne 27  
St. Paul 17

**QUARTERFINALS:**  
Esperanza 12  
Villa Park 0  
Schurr 28  
Loara 14  
Hart 26  
Chaminade 21  
Los Alamitos 20  
Hawthorne 14 (2OT)

**SEMIFINALS:**  
Esperanza 49  
Schurr 7  
Los Alamitos 37  
Hart 23

**FINALS:**  
Los Alamitos 8  
Esperanza 0

## DIVISION VIII

**FIRST ROUND:**  
Atascadero 21  
Santa Paula 18  
Redondo 36  
Bloomington 0  
Morningside 28  
Nordhoff 7  
Valley View 42  
West Torrance 20  
Cabrillo 42  
Fillmore 19  
Beverly Hills 43  
Torrance 40  
St. Joseph/S.M. 20  
South Torrance 17  
Temecula Valley 28  
Culver City 13

**QUARTERFINALS:**  
Atascadero 29  
Redondo 13  
Morningside 36  
Valley View 9  
Beverly Hills 31  
Cabrillo 21  
Temecula Valley 34  
St. Joseph/S.M. 13

**SEMIFINALS:**  
Morningside 21  
Atascadero 14  
Temecula Valley 49  
Beverly Hills 28

**FINALS:**  
Morningside 27  
Temecula Valley 20

## DIVISION IV

**FIRST ROUND:**  
Los Altos 27  
Canyon Springs 26  
Damien 20  
Walnut 5  
Baldwin Park 14  
Santa Fe 0  
Glendora 28  
Workman 7  
El Rancho 13  
Upland 10  
Covina 36  
Perris 7  
J.W. North 41  
Chino 10  
Nogales 22  
Whittier 14

**QUARTERFINALS:**  
Damien 32  
Los Altos 30 (3OT)  
Baldwin Park 14  
Glendora 10  
El Rancho 33  
Covina 12  
Nogales 14  
J.W. North 13

**SEMIFINALS:**  
Baldwin Park 22  
Damien 15  
Nogales 20  
El Rancho 17

**FINALS:**  
Baldwin Park 28  
Nogales 7

## DIVISION IX

**FIRST ROUND:**  
Big Bear 37  
Desert 16  
St. Bonaventure 32  
Brethren 12  
Tehachapi 17  
Highland 7  
Whittier Christian 31  
Cantwell-Sacred Heart 2  
Bishop 40  
Beaumont 8  
Carpinteria 41  
Murphy 12  
Oak Park 49  
Cathedral 29  
Valley Christian/C. 20  
Yucca Valley 6

**QUARTERFINALS:**  
St. Bonaventure 22  
Big Bear 21  
Tehachapi 9  
Whittier Christian 0  
Carpinteria 16  
Bishop 0  
Valley Christian/C. 21  
Oak Park 17

**SEMIFINALS:**  
Tehachapi 14  
St. Bonaventure 8  
Carpinteria 35  
Valley Christian/C. 28

**FINALS:**  
Carpinteria 14  
Tehachapi 7

## DIVISION V

**FIRST ROUND:**  
Corona 49  
Coachella Valley 14  
Montclair 21  
El Monte 3  
Palm Desert 28  
Rosemead 14  
Santa Margarita 29  
Colton 22  
Norco 14  
Hesperia 0  
Indio 25  
Chaffey 13  
Ganesha 39  
Barstow 21  
Arroyo 12  
Jurupa Valley 10

**QUARTERFINALS:**  
Corona 41  
Montclair 14  
Palm Desert 26  
Santa Margarita 25  
Indio 15  
Norco 14 (OT)  
Arroyo 23  
Ganesha 20 (OT)

**SEMIFINALS:**  
Corona 42  
Palm Desert 7  
Arroyo 7  
Indio 3

**FINALS:**  
Corona 21  
Arroyo 16

## DIVISION X

**FIRST ROUND:**  
Calvary Chapel/S.A. Bye  
Trona 7  
Los Angeles Baptist 0  
Silver Valley Bye  
Village Christian 8  
Kilpatrick 6  
So. California Christian 42  
Hamilton 6  
Maranatha Bye  
Rosamond 37  
Leffingwell 12  
Linfield Bye

**QUARTERFINALS:**  
Calvary Chapel/S.A. 27  
Trona 14  
Village Christian 36  
Silver Valley 19  
So. California Christian 37  
Maranatha 8  
Rosamond 25  
Linfield 12

**SEMIFINALS:**  
Calvary Chapel/S.A. 13  
Village Christian 12  
So. California Christian 20  
Rosamond 12

**FINALS:**  
So. California Christian 34  
Calvary Chapel/S.A. 14

see FOOTBALL PLAYOFFS page 18

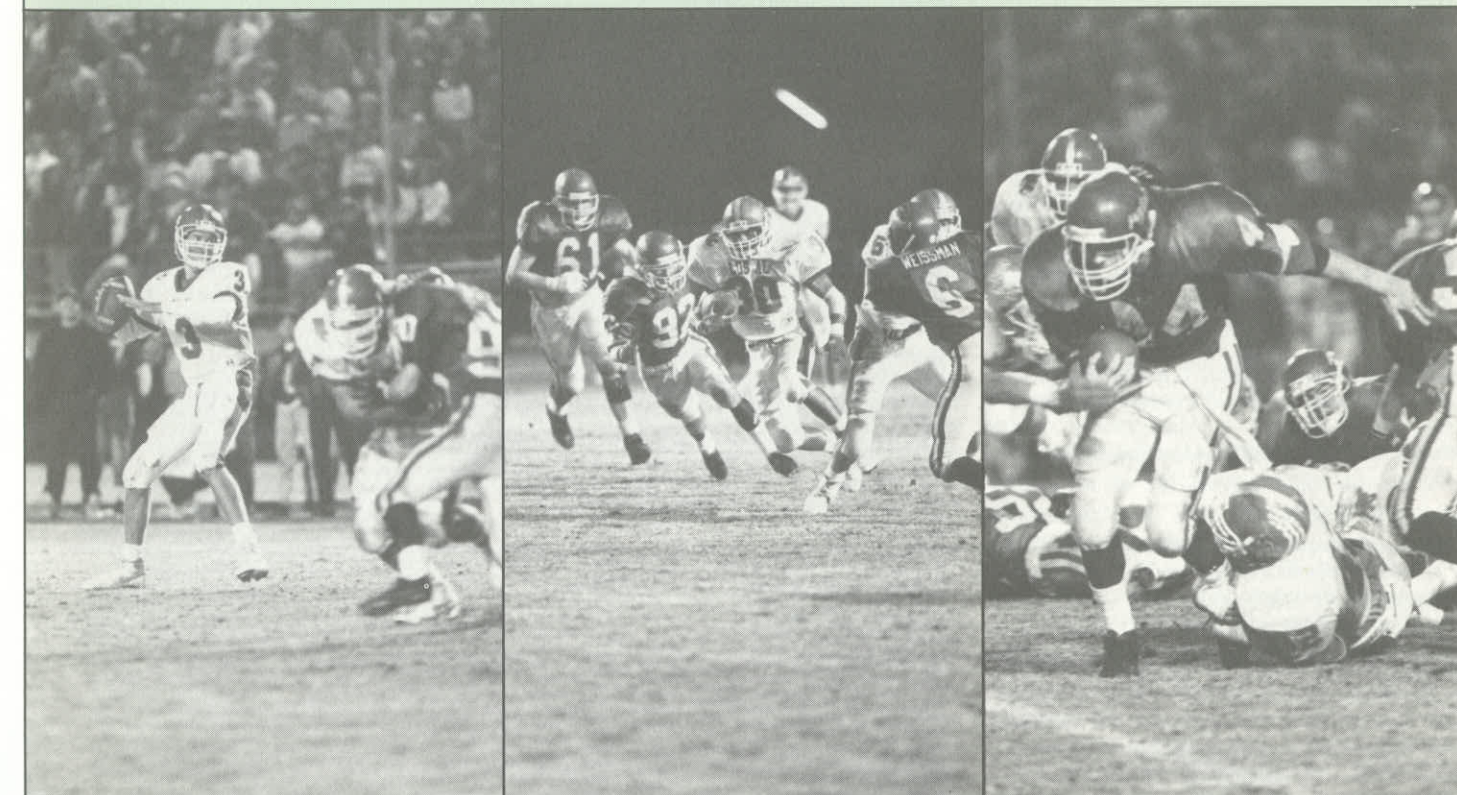


## SOUTHERN SECTION CIF/REEBOK 1991 FOOTBALL CHAMPIONS

**DIVISION I**  
Mater Dei  
**DIVISION II**  
Irvine  
**DIVISION III**  
Los Alamitos  
**DIVISION IV**  
Baldwin Park

**DIVISION V**  
Corona  
**DIVISION VI**  
Valencia  
**DIVISION VII**  
Laguna Hills  
**DIVISION VIII**  
Morningside

**DIVISION IX**  
Carpinteria  
**DIVISION X**  
Southern California Christian  
**EIGHT-MAN LARGE**  
Faith Baptist  
**EIGHT-MAN SMALL**  
Big Pine



Action photos by Al Martin

# SOUTHERN SECTION CIF/REEBOK 1991 GIRLS VOLLEYBALL PLAYOFF RESULTS

## 5-A DIVISION

**Wild Card:** Newbury Park def. Dos Pueblos 15-8, 12-15, 15-4, 15-6; Thousand Oaks def. Beverly Hills 15-5, 15-4, 15-0; Redondo def. Costa Mesa 15-6, 15-8, 16-14; Newport Harbor def. Santa Margarita 15-7, 15-3, 15-7; University def. Dana Hills 15-6, 15-10, 15-6.

**First Round:** St. Joseph/L. def. Newbury Park 15-10, 15-11, 15-7; Mira Costa def. Estancia 15-6, 15-2, 15-5; El Toro def. Santa Barbara 16-14, 15-4, 16-14; Corona del Mar def. Thousand Oaks 15-4, 15-5, 15-8; Capistrano Valley def. Redondo 15-6, 15-6, 15-5; Royal def. Newport Harbor 10-15, 15-12, 9-15, 15-13, 15-11; Laguna Beach def. University 15-11, 15-6, 15-3; Mater Dei def. Ventura 12-15, 15-8, 10-15, 15-12, 15-8.

**Second Round:** St. Joseph/L. def. Mira Costa 15-6, 17-15, 15-13; El Toro def. Corona del Mar 15-9, 15-8, 14-16, 15-9; Capistrano Valley def. Royal 15-8, 16-14, 15-5; Laguna Beach def. Mater Dei 15-7, 11-15, 15-8, 15-10.

**Semifinals:** El Toro def. St. Joseph/L. 2-15, 15-8, 19-17, 15-6; Laguna Beach def. Capistrano Valley 11-15, 15-4, 15-3, 15-7.

**Finals:** Laguna Beach def. El Toro 15-12, 15-13, 15-13.

## 4-A DIVISION

**First Round:** Marlborough def. Alemany 11-15, 16-14, 15-6, 15-12; Alhambra def. Pasadena 15-2, 5-15, 15-11, 15-12; Peninsula def. Millikan 15-9, 15-2, 9-15, 15-9; Marina def. Paramount 15-3, 15-7, 15-6; L.B. Poly def. Edison 15-10, 16-14, 15-7; Bell Jeff. def. Glendale 15-4, 15-8, 15-6; Bishop Montgomery def. Downey 15-3, 15-8, 7-15, 13-15, 15-5; Los Alamitos def. Inglewood 15-4, 15-2, 15-7; Marymount def. San Gabriel 15-9, 15-5, 15-10; Santa Monica def. El Segundo 15-13, 4-15, 15-13, 15-10; Notre Dame/S.O. def. Harvard-Westlake 15-7, 16-14, 15-11; Cypress def. L.B. Wilson 16-14, 8-15, 15-7, 8-15, 15-11; Fountain Valley def. Esperanza 15-10, 15-12, 15-10; Gahr def. Schurr 15-8, 15-8, 17-15; Arcadia def. Flintridge Sacred Heart 15-8, 15-3, 15-7; Notre Dame Academy def. Chaminade 10-15, 15-4, 18-16, 15-8.

**Second Round:** Marlborough def. Alhambra 15-5, 15-1, 15-10; Marina def. Peninsula 15-9, 15-6, 15-6; L.B. Poly def. Bell Jeff. 15-5, 15-13, 15-9; Los Alamitos def. Bishop Montgomery 10-15, 15-6, 13-15, 15-7, 15-12; Marymount def. Santa Monica 14-16, 15-12, 15-5, 15-9; Notre Dame/S.O. def. Cypress 15-13, 15-13, 6-15, 15-13; Fountain Valley def. Gahr 13-15, 15-0, 12-15, 15-13, 15-12; Arcadia def. Notre Dame Academy 15-11, 15-7, 15-13.

**Quarterfinals:** Marlborough def. Marina 15-9, 17-15, 10-15, 15-9; L.B. Poly def. Los Alamitos 11-15, 15-9, 15-8, 8-15, 15-11; Marymount def. Notre Dame/S.O. 15-7, 15-11, 15-12; Fountain Valley def. Arcadia 15-9, 15-13, 15-2.

**Semifinals:** Marlborough def. L.B. Poly 16-14, 9-15, 15-7, 15-12; Marymount def. Fountain Valley 15-9, 15-13, 6-15, 15-9.

**Finals:** Marlborough def. Marymount 15-3, 15-11, 15-11.

## 3-A DIVISION

**Wild Card:** Saugus def. San Marino 15-5, 15-7, 15-3; Fullerton def. Pacifica 15-8, 14-16, 15-3, 15-1; North Torrance def. Montebello 15-12, 15-12, 15-11; Canyon Springs def. Orange 8-15, 15-9, 15-9, 6-15, 15-6.

**First Round:** La Habra def. La Sierra 15-2, 15-2, 15-3; Fontana def. J.W. North 15-17, 15-10, 6-15, 20-18, 15-5; Los Altos def. Whittier 15-13, 16-14, 16-14; Don Lugo def. Temecula Valley 17-15, 12-15, 15-6, 15-7; Torrance def. Saugus 15-10, 15-4, 16-14; Foothill def. Kennedy 15-13, 15-10, 15-0; Fullerton def. Temple City 4-15,

15-8, 8-15, 15-3, 15-12; Canyon/C.C. def. North Torrance 15-2, 15-17, 15-5, 15-2; Sunny Hills def. Wilson/H.H. 15-4, 15-9, 15-6; Canyon Springs def. La Quinta 12-15, 16-14, 15-5, 15-5; Diamond Bar def. Redlands 15-12, 10-15, 15-7, 15-9; Rim of the World def. Alta Loma 15-11, 13-15, 17-15, 15-13; South Torrance def. La Canada 15-8, 15-4, 10-15, 15-5; Bell Gardens def. Antelope Valley 11-15, 15-9, 15-12, 16-14; Upland def. Arlington 10-15, 15-4, 12-15, 15-11, 15-12; El Modena def. San Geronimo 15-6, 15-7, 15-6.

**Second Round:** La Habra def. Fontana 15-4, 12-15, 15-6, 15-0; Don Lugo def. Los Altos 16-14, 15-6, 2-15, 15-11; Torrance def. Foothill 15-12, 13-15, 15-12, 13-15, 15-3; Canyon/C.C. def. Fullerton 15-4, 15-11, 15-4; Sunny Hills def. Canyon Springs 15-13, 15-11, 15-11; Diamond Bar def. Rim of the World 6-15, 16-14, 15-12, 15-8; South Torrance def. Bell Gardens 15-9, 15-2, 15-11; El Modena def. Upland 15-6, 16-14, 15-7.

**Quarterfinals:** La Habra def. Don Lugo 15-9, 15-5, 15-1; Torrance def. Canyon/C.C. 15-4, 15-11, 9-15, 15-7; Sunny Hills def. Diamond Bar 15-8, 15-9, 9-15, 15-5; El Modena def. South Torrance 15-2, 15-11, 15-11.

**Semifinals:** La Habra def. Torrance 8-15, 15-11, 16-14, 8-15, 15-8; El Modena def. Sunny Hills 6-15, 15-4, 15-2, 15-8.

**Finals:** La Habra def. El Modena 15-4, 11-15, 15-8, 11-15, 15-11.

## 2-A DIVISION

**Wild Card:** Santa Paula def. Littlerock 15-5, 15-8, 15-8; Corona def. Cajon 15-7, 15-7, 6-15, 15-5; Oak Park def. Mountain View 15-12, 15-6, 15-6; Mayfair def. Western 15-5, 15-13, 15-3.

**First Round:** Arroyo Grande def. Morro Bay 15-1, 15-3, 15-4; Rosemead def. Bonita 15-1, 12-15, 15-7, 13-15, 15-7; Ontario def. Brawley 15-11, 13-15, 16-18, 15-13, 15-9; Elsinore def. Colton 15-11, 16-14, 15-8; La Reina def. Pius X 15-4, 15-6, 15-9; Valencia def. Coachella Valley 15-3, 15-9, 15-7; Glenn def. Calabasas 15-9, 15-5, 15-17, 15-6; Paso Robles def. Lompoc 15-1, 15-2, 15-1; Moorpark def. Santa Paula 15-1, 15-2, 15-10; Victor Valley def. Pomona Catholic 15-12, 9-15, 15-7, 15-11; La Mirada def. Corona 15-2, 15-6, 15-3; Nordhoff def. Oak Park 14-16, 15-2, 15-6, 15-3; Atascadero def. San Luis Obispo 16-14, 5-15, 15-7, 12-15, 15-9; Arroyo def. Brea Olinda 18-16, 15-1, 9-15, 15-4; Palm Desert def. Centennial/Corona 15-9, 15-5, 11-15, 15-9; St. Anthony def. Mayfair 15-9, 15-4, 16-14.

**Second Round:** Arroyo Grande def. Rosemead 15-3, 15-9, 15-9; Ontario def. Elsinore 15-3, 15-3, 15-9; Valencia def. La Reina 15-12, 15-8, 15-11; Paso Robles def. Glenn 10-15, 15-7, 15-9, 15-4; Moorpark def. Victor Valley 15-0, 15-7, 15-6; Nordhoff def. La Mirada 15-3, 15-4, 15-9; Atascadero def. Arroyo 15-3, 15-8, 15-7; St. Anthony def. Palm Desert 15-12, 15-2, 15-11.

**Quarterfinals:** Arroyo Grande def. Ontario 15-0, 15-6, 15-1; Paso Robles def. Valencia 15-10, 10-15, 15-8, 15-12; Nordhoff def. Moorpark 15-13, 15-4, 15-8; St. Anthony def. Atascadero 15-10, 15-3, 15-12.

**Semifinals:** Arroyo Grande def. Paso Robles 15-13, 8-15, 15-6, 8-15, 15-2; St. Anthony def. Nordhoff 15-9, 15-9, 15-10.

**Finals:** Arroyo Grande def. St. Anthony 14-16, 12-15, 15-11, 15-12, 15-2.

## 1-A DIVISION

**First Round:** Capistrano Valley Christian def. Northview 15-1, 15-6, 15-11; Serrano def. San Dimas 11-15, 15-5, 15-8, 15-13; Twentynine Palms def. Gladstone 15-5, 15-3, 15-11; South Hills def. Connelly 15-3, 15-13, 17-15; Flintridge Prep. def. Tehachapi 15-9, 15-5, 15-4; Ramona Convent def. Cantwell-Sacred Heart 15-6,

15-12, 15-5; Crossroads def. Paraclete 15-13, 11-15, 15-11, 10-15, 15-10; Los Angeles Baptist def. Valley Christian/C. 15-8, 15-2, 13-15, 15-1; Whittier Christian def. San Gabriel Mission 15-9, 15-9, 15-5; Bassett def. Campbell Hall 15-3, 15-12, 14-16, 15-9; Pasadena Poly def. St. Matthias 15-8, 9-15, 15-8, 15-7; Desert def. Village Christian 15-13, 11-15, 15-11, 15-10; Maranatha def. Rio Hondo 15-10, 3-15, 18-16, 15-10; La Puente def. Big Bear 15-7, 15-6, 15-7; Windward def. Chadwick 15-8, 19-17, 16-14; Brentwood def. Orange Lutheran 15-4, 15-8, 14-16, 15-4.

**Second Round:** Capistrano Valley Christian def. Serrano 15-0, 15-7, 15-3; Twentynine Palms def. South Hills 10-15, 15-5, 15-11, 15-12; Flintridge Prep def. Ramona Convent 15-3, 15-1, 15-6; Los Angeles Baptist def. Crossroads 15-4, 15-3, 15-8; Whittier Christian def. Bassett 15-10, 15-6, 15-4; Pasadena Poly def. Desert 16-14, 16-14, 17-15; Maranatha def. La Puente 15-10, 13-15, 15-8, 15-9; Brentwood def. Windward 10-15, 15-3, 15-6, 15-7.

**Quarterfinals:** Capistrano Valley Christian def. Twentynine Palms 15-6, 15-11, 15-3; Los Angeles Baptist def. Flintridge Prep 15-13, 15-9, 15-6; Whittier Christian def. Pasadena Poly 13-15, 15-7, 15-8, 15-11; Brentwood def. Maranatha 7-15, 15-4, 15-7, 15-9.

**Semifinals:** Los Angeles Baptist def. Capistrano Valley Christian 15-13, 11-15, 15-7, 15-3; Brentwood def. Whittier Christian 15-13, 15-9, 15-10.

**Finals:** Los Angeles Baptist def. Brentwood 16-14, 15-4, 15-5.

## SMALL SCHOOLS DIVISION

**Wild Card:** Apple Valley Christian def. Bundy Canyon 15-3, 15-0, 15-1; Laguna Blanca def. Pioneer Baptist 15-6, 15-6, 13-15, 15-11; La Sierra def. Desert Christian 15-0, 15-9, 15-8; Los Angeles Lutheran def. Lefingwell Christian 20-18, 15-5, 2-15, 15-4; Bethel Christian def. South Bay Lutheran 15-10, 16-14, 15-1.

**First Round:** Mammoth def. Apple Valley Christian 15-2, 15-6, 15-6; Lee Vining def. West Los Angeles Baptist 15-8, 15-6, 5-15, 15-12; Coast Union def. Southwestern 15-12, 15-6, 10-15, 15-3; Arrowhead Christian def. Harbor Christian 9-15, 14-16, 15-10, 15-12, 15-3; St. Margaret's def. Laguna Blanca 15-5, 15-5, 15-4; Hamilton def. Bloomington Christian 15-0, 15-9, 16-14; First Lutheran def. Cuyama Valley 14-16, 15-11, 15-11, 15-9; Calvary Chapel/S.A. def. Thacher 15-4, 15-0, 15-3; Linfield def. La Sierra 15-6, 15-10, 6-15, 15-7; Mesrobian def. Gethsemane Baptist 17-15, 11-15, 15-8, 16-14; Inland New Life Christian def. Calvary Chapel/R. 15-7, 15-9, 15-5; Boron def. Baker 15-2, 15-1, 15-5; Hillcrest Christian def. Liberty Christian 15-8, 15-7, 10-15, 15-12; Mission Prep def. Pilgrim 15-2, 15-6, 15-5; Los Angeles Lutheran def. Valley Christian/S.M. 2-15, 10-15, 15-9, 15-4, 15-12; Cate def. Bethel Christian/L. 15-1, 15-4, 15-11.

**Second Round:** Mammoth def. Lee Vining 15-1, 15-2, 15-8; Coast Union def. Arrowhead Christian 17-15, 15-2, 15-5; St. Margaret's def. Hamilton 15-10, 16-14, 15-6; Calvary Chapel/S.A. def. First Lutheran 15-6, 15-8, 15-12; Linfield def. Mesrobian 15-0, 15-7, 15-8; Boron def. Inland New Life Christian 15-3, 15-9, 15-5; Mission Prep def. Hillcrest Christian 15-1, 15-6, 15-4; Cate def. Los Angeles Lutheran 15-6, 15-8, 15-6.

**Quarterfinals:** Mammoth def. Coast Union 15-6, 15-10, 15-13; St. Margaret's def. Calvary Chapel/S.A. 8-15, 12-15, 15-9, 15-2, 15-9; Boron def. Linfield 15-9, 13-15, 15-3, 15-5; Cate def. Mission Prep 3-15, 16-14, 13-15, 15-10, 15-13.

**Semifinals:** St. Margaret's def. Mammoth 9-15, 15-8, 12-15, 15-10, 15-3; Cate def. Boron 15-11, 15-9, 15-13.

**Finals:** Cate def. St. Margaret's 15-5, 15-5, 15-8.

# SOUTHERN SECTION SWEEPS CIF/REEBOK STATE VOLLEYBALL PLAYOFFS

Southern Section schools made a clean sweep of the 1991 CIF/Reebok State Girls Volleyball Championships, winning all five of the divisional championship tournaments.

In Division I, an all-Southern Section final saw El Toro upset St. Joseph High of Lakewood in a thrilling and hard-fought championship match, 16-14, 15-13, 11-15, 12-15, 17-15. The win gave coach Mike Jagd and the Chargers their first-ever state championship, even though St. Joseph's Jaimie Torromeo set a state championship-match record with 47 kills.

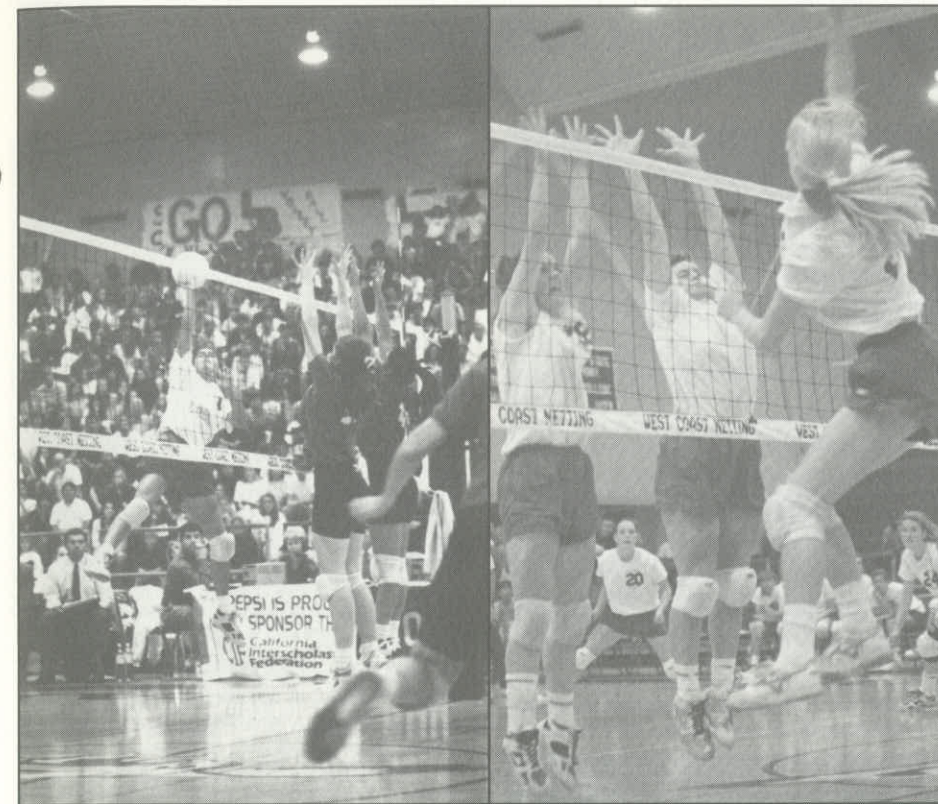
In Division II, La Habra won its third-straight state title behind the play of Zrinka Kristich, who had 36 kills, as the Highlanders defeated Leland High of San Jose in the championship final, 15-8, 14-16, 15-4, 15-11. La Habra is coached by Sandy Blumenthal.

Los Angeles Marymount captured its first-ever state championship in Division III, besting Granada High of Livermore, 15-1, 8-15, 12-15, 15-3, 15-10 in the championship final. Coach Al Lamarre's Sailors, which finished third in the rugged Sunshine League behind Marlborough and Notre Dame Academy, were led by Alison Dalley, who knocked down 28 kills in the championship match.

In Division IV, St. Anthony High of Long Beach won its first state title under coach Carla Pope, as the Saints easily dispatched Bear River High of Grass Valley, 15-6, 15-7, 15-5. Sisters Maureen and Terri Cox combined for 23 kills to pace the Saints in the title match.

In the Division V final, Capistrano Valley Christian also wrapped up its title with a three-straight win in the championship match, defeating Sacred Heart Prep of Atherton, 15-7, 15-3, 16-14. Coach George Carey's Eagles were led by outside hitter Karen Benkovsky and Debbie Martin, who had 22 kills and 38 assists in the title match, respectively.

Additional Southern Section schools to qualify for the CIF/Reebok State Volleyball Tournament of 1991 included: Laguna Beach and Arroyo Grande in Division I; Torrance, Marlborough and Sunny Hills in Division II; Paso Robles and El Modena in Division III; Whittier Christian, L.A. Baptist and Nordhoff in Division IV; Brentwood, St. Margaret's and Cate in Division V.



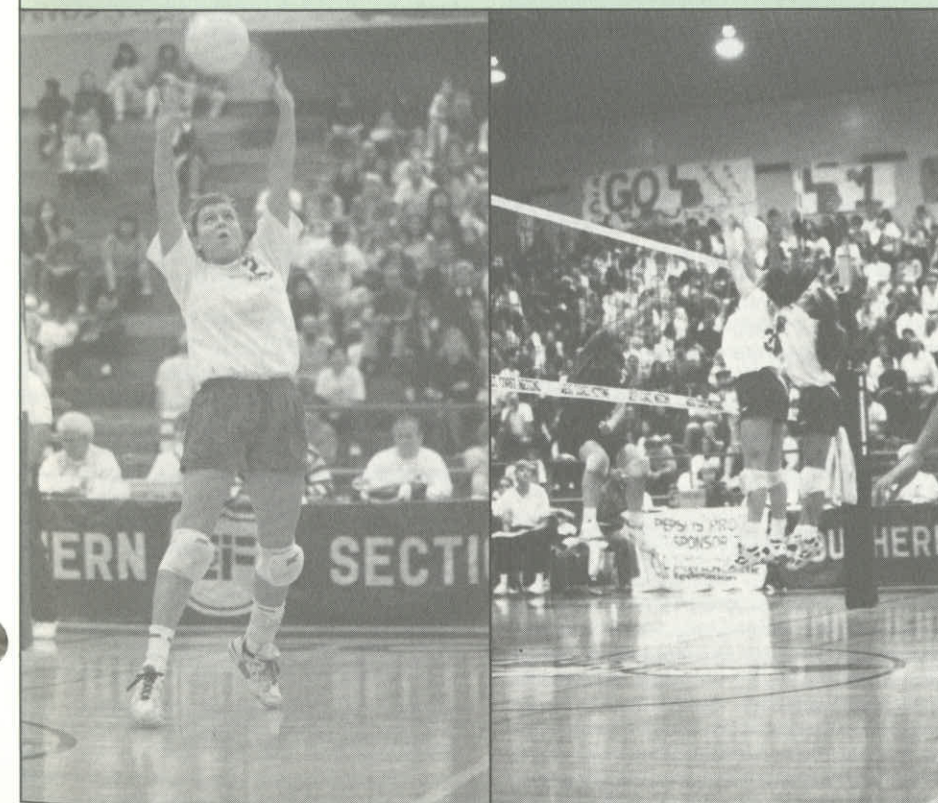
## SOUTHERN SECTION CIF/REEBOK 1991 GIRLS VOLLEYBALL CHAMPIONS

- 5-A DIVISION  
Laguna Beach
- 4-A DIVISION  
Marlborough
- 3-A DIVISION  
La Habra

- 2-A DIVISION  
Arroyo Grande

- 1-A DIVISION  
Los Angeles Baptist

- SMALL SCHOOLS DIVISION  
Cate



Action photos by Al Martin



## SOUTHERN SECTION CIF/REEBOK 1991 GIRLS TEAM TENNIS PLAYOFF RESULTS

### 4-A DIVISION

**Wild Card:** Dos Pueblos def. La Canada 11-7; Irvine def. University 11-7.

**First Round:** Peninsula def. Dos Pueblos 18-0; Irvine def. Fountain Valley 13-5; Corona del Mar def. San Marcos 12-6; Dana Hills Def. South Pasadena 18-0; Capistrano Valley def. Newport Harbor 15-3; Beverly Hills def. Marina 9-9 (74-70); San Marino def. Edision 11-7; Santa Barbara def. Mira Costa 15-3.

**Second Round:** Peninsula def. Irvine 16-2; Dana Hills def. Corona del Mar 14-4; Capistrano Valley def. Beverly Hills 12-6; Santa Barbara def. San Marino 12-6.

**Semifinals:** Peninsula def. Dana Hills 16-2; Santa Barbara def. Capistrano Valley 11-7.

**Finals:** Peninsula def. Santa Barbara 16-2.

### 3-A DIVISION

**First Round:** Westlake bye; Arcadia def. Hart 13-5; North Torrance def. Crescenta Valley 14-4; Estancia def. Rowland 14-4; Foothill def. San Geronio 16-2; Marlborough def. San Gabriel 17-1; Redlands def. Villa Park 11-7; Diamond Bar def. Costa Mesa 16-2; Camarillo bye; Burbank def. Glendale 12-6; South Torrance def. Pasadena 13-5; Alhambra def. Nogales

16-2; Laguna Beach def. West Torrance 14-4; Riverside Poly def. El Modena 12-6; Thousand Oaks def. Wilson/H.H. 13-5; Harvard-Westlake bye.

**Second Round:** Westlake def. Arcadia 13-5; Estancia def. North Torrance 12-6; Marlborough def. Foothill 14-4; Diamond Bar def. Redlands 15-3; Camarillo def. Burbank 17-1; Alhambra def. South Torrance 11-7; Laguna Beach def. Riverside Poly 17-1; Harvard-Westlake def. Thousand Oaks 12-6.

**Quarterfinals:** Westlake def. Estancia 13-5; Marlborough def. Diamond Bar 9-9 (77-73); Camarillo def. Alhambra 12-6; Harvard-Westlake def. Laguna Beach 10-8.

**Semifinals:** Westlake def. Marlborough 11-7; Camarillo def. Harvard-Westlake 11-7.

**Finals:** Westlake def. Camarillo 13-5.

### 2-A DIVISION

**First Round:** Los Alamitos def. Lynwood 18-0; Sonora def. Arlington 11-7; Santa Margarita def. Paramount 11-7; Chaminade def. Lakewood 18-0; St. Lucy's def. Notre Dame/S.O. 17-1; Katella def. L.B. Wilson 13-5; Hemet def. Indio 10-8; Mater Dei def. Millikan 16-2; Sunny Hills def. Glendora 14-4; Louisville def. Cerritos 16-2; Upland def. Central 14-4; El Dorado def. Canyon Springs 15-3; Claremont

**SOUTHERN SECTION  
CIF/REEBOK  
1991 GIRLS TEAM TENNIS  
CHAMPIONS**

**4-A DIVISION  
Peninsula**

**3-A DIVISION  
Westlake**

**2-A DIVISION  
Los Alamitos**

**1-A DIVISION  
Chadwick**

**SMALL SCHOOLS DIVISION  
Brentwood**

def. Palm Desert 11-7; J.W. North def. Fullerton 12-6; Esperanza def. L.B. Poly 13-5; Rosary def. Gahr 18-0.

**Second Round:** Los Alamitos def. Sonora 15-3; Santa Margarita def. Chaminade 12-6; St. Lucy's def. Katella 11-7; Mater Dei def. Hemet 15-3; Sunny Hills def. Louisville 13-5; El Dorado def. Upland 13-5; J.W. North def. Claremont 10-8; Rosary def. Esperanza 15-3.

**Quarterfinals:** Los Alamitos def. Santa Margarita 11-7; Mater Dei def. St. Lucy's 13-5; Sunny Hills def. El Dorado 9-9 (85-80); Rosary def. J.W. North 13-5.

**Semifinals:** Los Alamitos def. Mater Dei 11-7; Rosary def. Sunny Hills 13-5.

**Finals:** Los Alamitos def. Rosary 12-6.

### 1-A DIVISION

**Wild Card:** Arroyo Grande def. St. Joseph/S.M. 10-8; Brea Olinda def. Santiago 13-5; Cajon def. Elsinore 11-7.

**First Round:** San Luis Obispo def. Oak Park 18-0; Thacher def. Montebello 11-7; Rosemead def. La Reina 10-8; Santa Ynez def. Mayfield 13-5; Quartz Hill def. El Monte 12-6; Centennial/Corona def. Barstow 11-7; Pacific def. Pioneer 12-6; Chadwick def. Savanna 17-1; Cate def. Arroyo Grande 13-5; Brea Olinda def. Keppel 12-6; Canyon/C.C. def. Carpinteria 11-7; Righetti def. Morro Bay 13-5; Valencia def. Bolsa Grande 15-3; Corona def. Apple Valley 10-8; Cajon def. La Serna 12-6; Pasadena Poly def. Saugus 17-1.

see **TEAM TENNIS** page 13

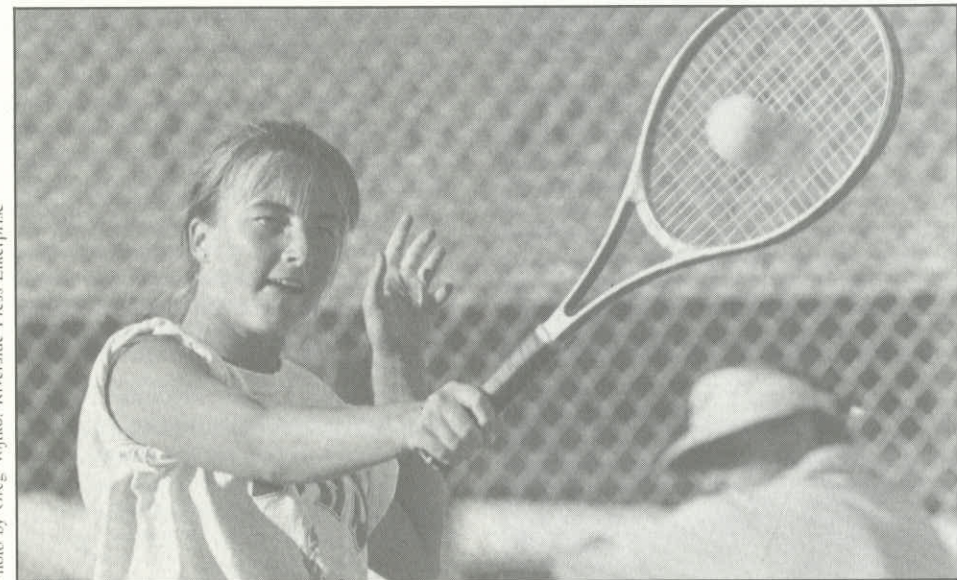


Photo by Greg Vojtko, Riverside Press-Enterprise

## SOUTHERN SECTION CIF/REEBOK 1991 GIRLS INDIVIDUAL TENNIS PLAYOFF RESULTS

### SINGLES

**First Round:** Nicole Hummel (San Marino) def. Dana Light (Beverly Hills) 6-1, 6-0; Pam Trump (Arcadia) def. Amelia White (Santa Barbara) 7-5, 6-2; Lindsay Wasserman (Harvard-Westlake) def. Page Bartelt (Capistrano Valley) 4-2, Retired; Brandi Freudenberg (El Modena) def. Julie Banks (Victor Valley) 6-2, 6-3; Ritu Manjunath (St. Lucy's) def. Amber Basica (Peninsula) 6-3, 7-5; Nicole Elliott (Dana Hills) def. Molly White (Camarillo) 6-3, 6-3; Sandra DeSilva (Pasadena Poly) def. Erika Asmus (Mater Dei) 6-4, 6-0; Ania Blezynski (Marlborough) def. Sue Hsu (Diamond Bar) 6-2, 6-1.

**Quarterfinals:** Nicole Hummel (San Marino) def. Pam Trump (Arcadia) 6-1, 6-0; Brandi Freudenberg (El Modena) def. Lindsay Wasserman (Harvard-Westlake) 6-2, 6-7, 6-3 (3-7); Nicole Elliott (Dana Hills) def. Ritu Manjunath (St. Lucy's) 6-1, 6-3; Ania Blezynski (Marlborough) def. Sandra DeSilva

(Pasadena Poly) 7-6, 6-3 (7-3).

**Semifinals:** Nicole Hummel (San Marino) def. Brandi Freudenberg (El Modena) 6-2, 6-2; Nicole Elliott (Dana Hills) def. Ania Blezynski (Marlborough) 7-6, 4-6, 6-3 (7-3).

**Finals:** Nicole Hummel (San Marino) def. Nicole Elliott (Dana Hills) 6-0, 6-2.

### DOUBLES

**First Round:** Amanda Augustus/Kelly Olsen (Peninsula) def. Annie Hoecker/Alison Brody (Pasadena Poly) 6-0, 6-0; Jennifer Yuan/Michelle Kong (San Marino) def. Renee Bergeron/Veronica Selby (Los Alamitos) 4-6, 6-1, 7-6 (7-4); Brigid Joyce/Terry Hiete (Marymount) def. Lisa Richard/Michelle Richard (Simi Valley) 3-6, 7-6, 6-3 (7-5); Lisa Shulga/Farrar Tierney (Capistrano Valley) def. Jessica Castagnari/Jackie Jocsen (St. Lucy's) 3-6, 6-4, 6-0; Bee Amesbutr/Beam Amesbutr (Chino) def. Amanda Lin/Ming Peng (San Marino) 6-1, 6-1; Yumi Takei/

Cathy Aagaard (Sonora) def. Romy Mehlman/Lisa Smolinsky (Harvard-Westlake) 6-2, 5-7, 6-4; Jennifer Reese/Kim Stuart (Westlake) def. Thu Cao/Wendy Gratteau (Marina) 6-4, 6-4; Stephanie Landsdorp/Summer Redondo (Peninsula) def. Roxanne Davidowitz/Rebecca Cannon (Chadwick) 6-1, 6-0.

**Quarterfinals:** Augustus/Olsen (Peninsula) def. Yuan/Kong (San Marino) 6-1, 6-1; Joyce/Hiete (Marymount) def. Shulga/Tierney (Capistrano Valley) 7-5, 2-6, 6-4; Amesbutr/Amesbutr (Chino) def. Takei/Aagaard (Sonora) 6-2, 7-5; Landsdorp/Redondo (Peninsula) def. Reese/Stuart (Westlake) 6-0, 6-2.

**Semifinals:** Augustus/Olsen (Peninsula) def. Joyce/Hiete (Marymount) 6-2, 6-2; Landsdorp/Redondo (Peninsula) def. Amesbutr/Amesbutr (Chino) 6-3, 7-5.

**Finals:** Landsdorp/Redondo (Peninsula) def. Augustus/Olsen (Peninsula) 6-0, 6-2.

## SOUTHERN SECTION CIF/REEBOK 1991 WATER POLO PLAYOFF RESULTS

### 4-A DIVISION

**Wild Card:** San Clemente 13, Esperanza 2; Tustin 18, Canyon/A. 8.

**First Round:** Corona del Mar 20, L.B. Poly 5; San Clemente 14, Sunny Hills 3; Villa Park 9, Los Alamitos 7; Dana Hills 12, Millikan 3; L.B. Wilson 11, La Habra 9; Newport Harbor 12, Foothill 7; El Dorado 3, Tustin 2; Capistrano Valley 13, Buena Park 5.

**SOUTHERN SECTION  
CIF/REEBOK  
1991 WATER POLY  
CHAMPIONS**

**4-A DIVISION  
San Clemente**

**3-A DIVISION  
Harvard-Westlake**

**2-A DIVISION  
Santa Maria**

**Second Round:** San Clemente 14, Corona 13 (OT); Dana Hills 6, Villa Park 5; L.B. Wilson 11, Newport Harbor 10 (OT); Capistrano Valley 12, El Dorado 9.

**Semifinals:** San Clemente 16, Dana Hills 8; Capistrano Valley 13, L.B. Wilson 12.

**Finals:** San Clemente 9, Capistrano Valley 5.

### 3-A DIVISION

**First Round:** La Serna 20, Servite 5; El Segundo 9, Baldwin Park 6; Redlands 19, Arlington 15; Fountain Valley 16, Downey 6; Royal 20, Crespi 3; Santa Monica 10, Crescenta Valley 9; J.W. North 13, Wilson/H.H. 6; Marina 10, Mater Dei 2; Edison 14, Mira Costa 4; Indio 10, San Geronio 3; Montebello 13, Cerritos 11; Muir 14, Thousand Oaks 3; Loyola 14, Hoover 7; Rowland 10, El Rancho 6; Peninsula 21, Agoura 7; Harvard-Westlake 27, Gahr 7.

### TEAM TENNIS RESULTS

(Continued from page 12)

**Second Round:** San Luis Obispo def. Thacher 13-5; Santa Ynez def. Rosemead 18-0; Quartz Hill def. Centennial/Cornia 9-9 (79-75); Chadwick def. Pacifica 17-1; Cate def. Brea Olinda 14-4; Righetti def. Canyon/C.C. 16-2; Valencia def. Corona 12-6; Pasadena Poly def. Cajon 15-3.

**Quarterfinals:** San Luis Obispo def. Santa Ynez 14-4; Chadwick def. Quartz Hill 16-2; Righetti def. Cate 10-8; Pasadena Poly def. Valencia 9-9 (76-56).

**Semifinals:** Chadwick def. San Luis Obispo 11-7; Pasadena Poly def. Righetti 10-8.

**Finals:** Chadwick def. Pasadena Poly 10-8.

### SMALL SCHOOLS DIVISION

**First Round:** La Mirada def. Walnut 17-1; Flintridge Sacred Heart def. Bishop 17-1; Temecula Valley def. Beaumont 13-5; South Hills def. Garey 13-5; Gladstone def. Ayala 14-4; Yucaipa def. Chaffey 12-6; Orange Lutheran def. Artesia 13-5; Whitney def. Tehachapi 18-0; Brentwood def. Bassett 15-3; Bell Jeff def. Desert 11-7; Workman def. Sierra Vista 9-9 (94-88); San Jacinto def. La Sierra 9-9 (72-65); Bonita def. Yucaipa 17-1; Valley Christian/C. def. Glenn 9-9 (82-81); Campbell Hall def. Ramona Convent 14-4; Rim of the World def. Big Bear 15-3.

**Second Round:** La Mirada def. Flintridge Sacred Heart 16-2; Yucaipa 13-5; Whitney def. Orange Lutheran 12-6; Brentwood def. Bell Jeff 18-0; San Jacinto def. Workman 12-6; Bonita def. Valley Christian/C. 12-6;



Photo by Harold Wells, Long Beach Press-Telegram

**Second Round:** La Serna 18, El Segundo 7; Fountain Valley 17, Redlands 9; Royal 6, Santa Monica 3; Marina 13, J.W. North 7; Edison 13, Indio 9; Muir 11, Montebello 10 (OT); Loyola 10, Rowland 4; Harvard-Westlake 16, Peninsula 9.

**Quarterfinals:** La Serna 4, Fountain Valley 2; Royal 8, Marina 3; Muir 10, Edison 9; Harvard-Westlake 10, Loyola 8.

**Semifinals:** La Serna 13, Royal 5; Harvard-Westlake 11, Muir 8.

**Finals:** Harvard-Westlake 9, La Serna 5.

### 2-A DIVISION

**Wild Card:** Temple City 13, Pasadena Poly 1, Magnolia, Whitney (Forfeit); Workman 13, Claremont 10; Nordhoff 11, Burbank 8; Estancia 11, La Quinta 9.

**First Round:** Santa Maria 10, San Marcos 6; Bonita 17, Jurupa Valley 4; Kennedy 8, Don Lugo 7; Alham-

bra 13, Temple City 6; Laguna Beach 13, Magnolia 6; Cabrillo 17, San Luis Obispo 9; San Marino 13, Buena 10; Brea Olinda 15, Webb 7; South Pasadena 16, Workman 8; Santa Barbara 16, Nordhoff 8; San Bernardino 19, Bosco Tech 7; Costa Mesa 16, Western 4; Lompoc 16, Santa Ynez 8; Los Amigos 7, Chadwick 5; Alta Loma 17, Victor Valley 13; Walnut 15, Estancia 7.

**Second Round:** Santa Maria 9, Bonita 2; Alhambra 11, Kennedy 7; Cabrillo 15, Laguna Beach 11; Brea Olinda 9, San Marino 8 (OT); Santa Barbara 9, South Pasadena 8; Costa Mesa 8, San Bernardino 7; Lompoc 15, Los Amigos 7; Walnut 21, Alta Loma 7.

**Quarterfinals:** Santa Maria 11, Alhambra 10; Cabrillo 13, Brea Olinda 10; Santa Barbara 16, Costa Mesa 14; Lompoc 14, Walnut 13 (OT).

**Semifinals:** Santa Maria 7, Cabrillo 4; Lompoc 15, Santa Barbara 14.

**Finals:** Santa Maria 13, Lompoc 10.

### COUNCIL MINUTES -

#### Sept. 19, 1991

(Continued from page 4)

tee, reviewed with the Council a joint meeting held with representatives of the various coaches advisory committees and the Season of Sport Committee. Following this meeting, a number of recommendations were discussed, and it was the decision of the Committee that the following be submitted for consideration:

(1) A summer dead period would be adopted for the CIF-SS from Monday, August 3 until the beginning of the first official starting date for fall practice, which begins August 24, 1991. An exception to this rule would permit water polo and cross country the choice of a three-week time period (from June 29-July 19 or August 3-August 24) as a dead period.

(2) Should a summer school program be conducted through the June 29-July 19 period and should the water polo or cross country teams select that period of time for no contact, no class could be offered in the summer school program which could circumvent

the rule.

(3) During the time period, weight lifting *ONLY* would be permitted for all sports. No running or other type of conditioning would be allowed during the dead period.

(4) Special programs in various sports that require a national or regional championship format, such as Bobby Sox Softball, etc., would be allowed.

**18. GEOGRAPHICAL REALIGNMENT** — Ron Barney, Chairperson of the Geographical Realignment Committee, reviewed with the Council discussions taking place within the geographical realignment committee and the need to reconsider boundary lines and configuration of the current areas. It should be noted that superintendents and all schools within the Southern Section have been sent a survey, and it is important that this survey be completed in order to assist the Committee in future decision making. It is requested that the survey be returned to the CIF-SS Office no later than Friday, November 8, 1991 for consideration at the next realignment meeting.

There being no further business to come before the Council, the meeting was adjourned at 12:45 p.m.

Submitted by  
DEAN CROWLEY  
ASSOCIATE COMMISSIONER

Approved by  
STAN THOMAS  
COMMISSIONER OF ATHLETICS

## SOUTHERN SECTION CIF/REEBOK 1991 BOYS-GIRLS CROSS COUNTRY RESULTS

### DIVISION I — BOYS

#### Team— I-AA

1. Peninsula — 28
2. San Gabriel — 60
3. Hoover — 87
4. Saddleback — 95
5. Dana Hills — 100

#### Individuals — I-AA

1. Angel Martinez, San Gabriel (15:14)
2. Margarito Casillas, Hoover (15:19)
3. T.J. Reyes, Lakewood (15:30)
4. Fernando Mendoza, Channel Islands (15:34)
5. Goss Lindsey, Peninsula (15:57)

#### Team— I-A

1. Hart — 37
2. Buena — 62
3. Esperanza — 79
4. Thousand Oaks — 87
5. Arroyo Grande — 101

#### Individuals — I-A

1. Cruz Gallegos, Centennial/Corona (15:38)
2. Keith Grossman, Hart (15:39)
3. Raul DeLacerda, Hart (15:53)
4. Bret Steahan, Hart (15:54)
5. Eric Dunn, Arroyo Grande (16:02)

### DIVISION II — BOYS

#### Team— II-AA

1. Mission Viejo — 55
2. Agoura — 58
3. Glendora — 85
4. Bishop Amat — 89
5. Claremont — 90

#### Individuals — II-AA

1. Ryan Wilson, Agoura (15:15)
2. Jacques Callberg, Muir (15:38)
3. Mike Love, Katella (15:43)
4. Cliff Curtis, Elsinore (15:56)
5. James Roldan, Bishop Amat (16:02)

#### Team— II-A

1. La Habra — 51
2. Righetti — 55
3. Villa Park — 70
4. Crescenta Valley — 92
5. Norco — 101

#### Individuals — II-A

1. Geoff Delahanty, West Torrance (16:19)
2. Todd Tressler, San Marcos (16:20)
3. James Mahon, La Habra (16:25)
4. Angel Ibarra, Righetti (16:33)
5. Robert Mahon, La Habra (16:36)

### DIVISION III — BOYS

#### Team— III-AA

1. Laguna Hills — 53
2. Newbury Park — 62
3. Paso Robles — 75
4. St. Francis — 93
5. Estancia — 103

#### Individual — III-AA

1. Jeff Wilson, Newbury Park (15:26)
2. Chris Lynch, Laguna Hills (15:47)
3. Froylan Sanchez, St. Francis (15:49)
4. Joel Montesdeoca, Azusa (16:08)
5. Dave Burnette, Laguna Hills (16:19)

#### Team— III-A

1. San Marino — 54
2. Corona del Mar — 60
3. Santa Margarita — 71
4. Newport Harbor — 76

5. Covina — 105

#### Individual — III-A

1. Mark Hamer, Covina (15:36)
2. David Rojas, Moorpark (16:04)
3. Ryan Wilkinson, Santa Margarita (16:13)
4. Rodger Ciano, San Luis Obispo (16:15)
5. Mike Hillman, San Marino (16:17)

### DIVISION IV — BOYS

#### Team— IV-AA

1. Nordhoff — 42
2. Bell-Jeff — 68
3. Morro Bay — 71
4. Oak Park — 88
5. La Salle — 105

#### Individual — IV-AA

1. Bobby Fardin, Crossroads (16:11)
2. Jese Moore, Nordhoff (16:15)
3. Adam Ripley, Laguna Beach (16:16)
4. Javier Ramirez, Nordhoff (16:19)
5. Jose Diaz, Bell-Jeff (16:23)

#### Team— IV-A

1. Maranatha — 23
2. Mammoth — 67
3. Webb — 71
4. Woodcrest Christian — 88
5. Brentwood — 105

#### Individuals — IV-A

1. Anthony Fisher, Maranatha (16:02)
2. Scott Locknart, Ontario Christian (16:14)
3. David Melkonian, Mammoth (17:04)
4. Eric Vales, Maranatha (17:27)
5. J.J. Tebo, Flintridge Prep (17:27)

### DIVISION I — GIRLS

#### Team— I-AA

1. Irvine — 49
2. Peninsula — 44
3. Long Beach Wilson — 86
4. Upland — 99
5. Channel Island — 102

#### Individual — I-AA

1. Kay Nekota, Agoura (17:59)
2. Christina Backmer, Upland (18:07)
3. Mayo Muneno, Peninsula (18:26)
4. Amy Skieresz, Agoura (18:31)
5. Erica Sumi, L.B. Wilson (18:36)

#### Team— I-A

1. Agoura — 37
2. Arroyo Grande — 64
3. Hart — 79
4. Buena — 80
5. El Toro — 84

#### Individuals — I-A

1. Angela Orefice, Arroyo Grande (18:34)
2. Jennifer Gillis, Irvine (18:56)
3. Kelly Roda, Irvine (18:56)
4. Kristin Schranz, Hart (19:04)
5. Bree Frigo, El Toro (19:10)

### DIVISION II — GIRLS

#### Team— II-AA

1. Edison — 22
2. Claremont — 72
3. Bishop Amat — 81
4. Riverside Poly — 103
5. Ventura — 107

#### Individual — II-AA

1. Shelley Taylor, Edison (17:29)
2. Carey Garretson, Sunny Hills (18:20)

3. Tanya Brix, University (18:59)
4. Jennifer Formosa, Edison (19:13)
5. Laura Monson, Claremont (19:29)

#### Team— II-A

1. El Modena — 40
2. Woodbridge — 49
3. Canyon/A. — 69
4. Westlake — 72
5. Righetti — 132

#### Individuals — II-A

1. Kim Nelson, Canyon/A. (18:53)
2. Maria Lopez, Compton (19:16)
3. Sarah Mac Dougall, Crescenta Valley (19:27)
4. Laura Flatauer, Canyon/A. (19:33)
5. LeAnna Degazon, Bishop Montgomery (19:36)

### DIVISION III — GIRLS

#### Team— III-AA

1. Laguna Hills — 27
2. Newbury Park — 48
3. Rim of the World — 101
4. Brea Olinda — 109
5. Brawley — 116

#### Individual — III-AA

1. Shawna Cottriel, Newbury Park (19:41)
2. Mayra Medina, Laguna Hills (19:48)
3. Adriana Hawley, Brawley (20:07)
4. Heather McGlone, Laguna Hills (20:10)
5. Heidi Sickler, Laguna Hills (20:32)

#### Team— III-A

1. Newport Harbor — 45
2. San Marino — 74
3. San Luis Obispo — 91
4. South Pasadena — 94
5. Costa Mesa — 95

#### Individuals — III-A

1. Carlene Pengra, La Canada (18:57)
2. Sarah Dien, La Canada (19:06)
3. Denisha Bendz, Costa Mesa (19:07)
4. Donna Mills, Newport Harbor (19:12)
5. Mary Crank, Newport Harbor (19:12)

### DIVISION IV — GIRLS

#### Team— IV-AA

1. Fillmore — 59
2. Orange Lutheran — 63
3. Nordhoff — 75
4. Morro Bay — 81
5. La Reina — 105

#### Individual — IV-AA

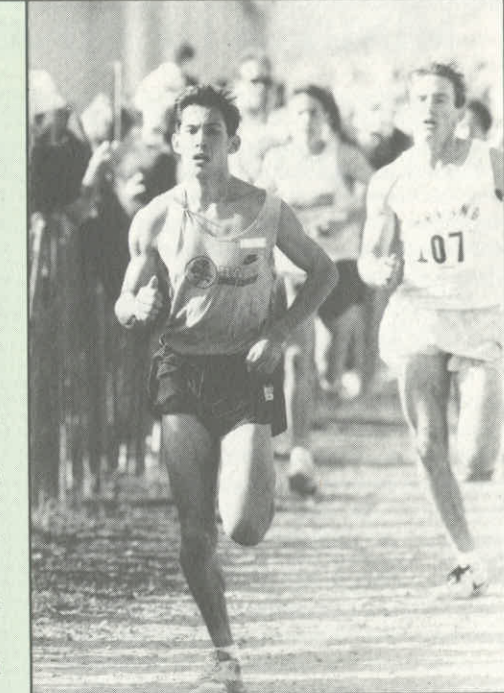
1. Maribella Aparicio, Fillmore (17:52)
2. Barbara Boisuert, Orange Lutheran (18:44)
3. Jamie Kendig, La Reina (19:09)
4. Amber Parkinson, Orange Lutheran (19:15)
5. Carolina Castellanos, Los Angeles Baptist (19:26)

#### Team— IV-A

1. Maranatha — 33
2. Thacher — 67
3. Vivan Webb — 92
4. Pasadena Poly — 93
5. Mammoth — 106

#### Individuals — IV-A

1. Jordan Aitchison, Thacher (20:09)
2. Karen Wester, Maranatha (20:34)
3. Sierra Donaille, Mammoth (20:43)
4. Caroline Van Tongeren, Maranatha (21:25)
5. Caroline Maxwell, Maranatha (21:28)



## SOUTHERN SECTION SCHOOLS CAPTURE SEVEN CIF/REEBOK STATE CROSS COUNTRY TEAM TITLES

School teams and individual runners representing the Southern Section proved dominant once again at the CIF/Reebok State Cross Country Championships, held on the three-mile course at Woodward Park in Fresno November 30. Of the eight divisional team championships awarded (four each for boys and girls), CIF-SS schools captured seven, while individual runners from Southern Section schools won five of the eight races.

Nordhoff High of Ojai was the big winner, capturing both the boys and girls team championships in Division IV. Freshman Javier Ramirez (8th individually) and Jesse Moore (15th) paced the Ranger boys, while Aimee Jones (10th) and Sarah Kunde

### SOUTHERN SECTION CIF/REEBOK 1991 CROSS COUNTRY TEAM CHAMPIONS

BOYS	GIRLS
<b>DIVISION I-AA</b>	
Peninsula	Irvine
<b>DIVISION I-A</b>	
Hart	Agoura
<b>DIVISION II-AA</b>	
Mission Viejo	Edison
<b>DIVISION II-A</b>	
La Habra	El Modena
<b>DIVISION III-AA</b>	
Laguna Hills	Laguna Hills
<b>DIVISION III-A</b>	
San Marino	Newport Harbor
<b>DIVISION IV-AA</b>	
Nordhoff	Fillmore
<b>DIVISION IV-A</b>	
Maranatha	Maranatha



# MINUTES OF CIF-SS EXECUTIVE COMMITTEE MEETING

## November 26, 1991

The November meeting of the CIF Southern Section Executive Committee was called to order by President Tom Jacobson at 1:10 p.m. on Tuesday, November 26, 1991 in the CIF-SS Offices. All members were present with the exception of Fr. William Brelsford, Cynthia Grennan and Andy Patterson.

**1. MINUTES** — It was moved, seconded and passed to approve the minutes of the CIF-SS Executive Committee meeting of October, 24, 1991.

**2. PRESIDENT'S UPDATE** — Dr. Tom Jacobson discussed with the Committee details involving the management of the CIF-SS Office which included the Southern Section salary schedule, contracts, administrative expenses and vacation days. Additionally, he stressed the importance of communication by principals to their superintendents, boards of education, etc. Discussion was held relative to the direction of both the State and national organization to include finances, corporate support, state playoffs and governance. Further, it was suggested that the Commissioner might give consideration in the future to the formation of a superintendents' committee at the Section level.

**3. COMMISSIONER'S UPDATE** — Commissioner Stan Thomas updated the Committee on the fall playoffs and discussed the pairing format for the football championships. Additionally, he updated the Committee on the current lease of the CIF-SS Office and announced that the acquisition of property would be put on hold until at least January, 1993, due to the state of the economy. A discussion was held relevant to the failure of new member schools to attend regional workshops, as required as part of membership. Following discussion, it was the decision of the Executive Committee that these schools would be put on immediate probation and be required to attend a special workshop set up by the CIF-SS Office at a future date. If they fail to comply, membership will be suspended immediately.

### COMMISSIONER'S CORNER

(Continued from page 2)

imately 50%) and 42 from district superintendents (approximately 7%). Although the committee would have liked to have seen a larger sampling, some interesting observations were made.

Question No. 1 of the survey asked, "Should all schools be aligned strictly by geography, or should the private/parochial schools have their own areas?" The principals answered 86 (35%) for geography and 106 (43%) for separate, with 22% of the respondents undecided. The superintendent responses were nearly a 50-50 split, with 20 for geography and 22 for separate.

Question No. 2 of the survey asked, "Would you be in favor of changing the relegating cycles to four years rather than the current two-year cycle?" Of the principals responses, 150 (60%) favored such change; 49 (20%) would elect to maintain the present (two-year) system. The superintendents' response was 29 (69%) for a four-year cycle; 13 (31%) for a two-year cycle.

Question No. 3 asked: "Do you have any suggestions for geographical realignment of

**4. GIRLS' A.D. UPDATE** — Sheri Ross, Girls' A.D. Representative, announced that the California State Athletic Directors' Conference will be held April 2-5, 1992 in Palm Springs. Additionally, she announced that the State Girls' Volleyball Championships will be conducted on Saturday, December 7, 1991 at Cal State Fullerton.

**5. BOYS' A.D. UPDATE** — Rich Ramirez, Boys A.D. Representative, discussed with the Committee the financial crisis in the State and the impact on budget and finance which has caused a reduction in many high school coaching positions throughout the state.

**6. SUPERINTENDENTS' UPDATE** — Jim Fleming, State Superintendent Representative, reviewed State and Section relegating issues, the State appeals process, and concerns relative to sectioning and the impact on school district budgets.

**7. TREASURER'S REPORT** — Ken Gunn, Treasurer, reviewed contract considerations for a potential LA City Section/Southern Section football game to be played in 1992 and televised by KCOP. He also reviewed delinquent membership dues with the Committee.

**8. STATE CIF REPORT** — Dr. Robert Packer reported on highlights of the State Federated Council meeting held in Palm Springs on November 1, 1991: (1) **Approved an increase in reimbursement for basketball championship ground travel from \$1.00/mile round-trip to \$2.00/mile round-trip.** The increase will be effective in 1993.

(2) **Approved the Wrestling Advisory Committee's recommendation for entry into CIF/Reebok State Wrestling championships.** The proposal states, "each section will be guaranteed a minimum of one qualifier per weight. Additional qualifiers will be based on each section's number of place winners over the previous four years. A review of the number of entries will be determined every two years (on even number years to be reflected in the 1992 State Tournament). The

the CIF Southern Section?" Twenty-six percent of the principals (64 of the 248 to respond) offered suggestions, while nearly half of the superintendents (20 of 42) expressed their ideas. Among the many individual responses, 13 principals showed concern for travel and expenses; six principals would like to see the formation of an Orange County Section; and four expressed that competitive equity and school enrollments should be major considerations for relegating and playoff groupings. Among the superintendent responses, two recommended development of an Orange County Section and four made note of concerns for transportation costs.

The time may have come for the Southern Section to look within itself and determine if major changes are required concerning its structure and scope. One thing is for sure: because the organization is based upon the concepts of voluntary membership and self-governance, the answers must come from the membership itself. Hopefully, the direction taken will be chartered carefully, with the best interest of all schools, districts and leagues considered.

State CIF will be responsible for overseeing entry data revisions." Effective the 1991-92 wrestling season.

(3) **Approved the Executive Committee's action to expend \$45,000 to Steel Marketing Partners to conduct a marketing survey which will determine the scope of corporate support in CIF.** Steel Marketing Partners will submit a progress report at the winter meeting of the Federated Council, which will explore options that exist in the area of corporate support.

(4) State CIF Commissioner Tom Brynes presented for the Council's consideration, **conditions and protocol permitting competition between section champions in football.** The games would be under the jurisdiction of the State CIF, but managed by the sections involved in the playoff. It was suggested that the playoff protocol be expanded to include all possible sports, not just football. The matter is referred to the State CIF Competition Committee and return as an agenda item at the winter Federated Council Meeting.

(5) **A proposal was made by the Track and Field/Cross Country Advisory Committee to increase the divisions in cross country from four to five.** The major concern of the committee was that smaller schools (under 500) had a very limited opportunity to compete fairly for a CIF/Reebok State Championship in the present format.

**9. SANTA BARBARA VOLLEYBALL WAIVER REQUEST** — Commissioner Stan Thomas and President Dr. Tom Jacobson reviewed correspondence from a Santa Barbara attorney requesting waiver of the player limitation rule in the sport of volleyball. The attorney, representing a number of parents of volleyball players at Santa Barbara High School, is requesting a waiver of Rule 2213.1 which limits the number of players on an outside volleyball team outside the high school season of sport to four members of that high school's volleyball program who have remaining eligibility and who participated on a school team at any level in a most recent season.

Following discussion, it was moved, seconded and passed to present this issue to the Council for action in January, with a recommendation to eliminate all outside competition rules by an individual outside the season of sport — basketball (1814.1), softball (1914.1), water polo (2012.1), volleyball (2213.1) and baseball (2413.1).

**10. LEGAL UPDATE** — Commissioner Stan Thomas updated the Committee with reference to current legal issues.

**11. FALL PLAYOFF UPDATE** — Associate Commissioner Dean Crowley and Administrators Bill Clark and Karen Hellyer reported on fall sports playoff activities which included cross country, football, water polo, girls' volleyball and girls' tennis.

**12. MEMBERSHIP** — It was moved, seconded and passed to approve membership for the following schools: Ventura Country Christian, Baptist Christian (Norwalk), Clement Junior High School (Redlands), Cope Junior High School (Redlands), and Moore Junior High School (Redlands). Additional, the request for membership for Yago School (Garden Grove) was denied.

There being no further business to come before the Committee, the meeting was adjourned at 4:40 p.m.

Submitted by  
DEAN CROWLEY  
ASSOCIATE COMMISSIONER

Approved by  
STAN THOMAS  
COMMISSIONER OF ATHLETICS



### Publication Order Form

Quantity	Item	Price Enclosed
_____	<b>Baseball</b>	
_____	rule book	\$4.00
_____	case book	\$4.00
_____	CIF-SS program	\$5.00
_____	Press Guide/Master Schedule	\$10.00
_____	<b>Basketball</b>	
_____	rule book	\$4.00
_____	case book	\$4.00
_____	simplified rule	\$4.00
_____	CIF-SS program	\$5.00
_____	Press Guide/Master Schedule	\$10.00
_____	<b>Football</b>	
_____	rule book	\$4.00
_____	case book	\$4.00
_____	simplified rule	\$4.00
_____	CIF-SS program	\$5.00
_____	Press Guide/Master Schedule	\$10.00
_____	<b>Gymnastics</b>	
_____	Boys rules	\$5.00
_____	Girls rules	\$5.00
_____	<b>Field Hockey</b>	
_____	rule book	\$4.00
_____	<b>Soccer</b>	
_____	rule book	\$4.00
_____	CIF-SS program	\$4.00
_____	<b>Softball</b>	
_____	rule book	\$4.00
_____	CIF-SS program	\$5.00
_____	<b>Swimming/Water Polo</b>	
_____	rule book	\$4.00
_____	CIF-SS program	\$4.00
_____	<b>Track &amp; Field</b>	
_____	rule book	\$4.00
_____	CIF-SS program	\$5.00
_____	<b>Volleyball</b>	
_____	rule book	\$4.00
_____	Boys' program	\$4.00
_____	Girls' program	\$4.00
_____	<b>Wrestling</b>	
_____	rule book	\$4.00
_____	CIF-SS program	\$4.00
_____	CIF-SS Blue Book/Directory	\$15.00
_____	CIF-SS Bulletin (4 Editions)	\$10.00
_____	<b>Total Amount Enclosed</b>	\$ _____

All Prices include  
Postage and Handling

Mail to:

Name \_\_\_\_\_  
Address \_\_\_\_\_  
City \_\_\_\_\_  
Zip \_\_\_\_\_

Return to:  
Publication Order  
CIF-SS, P.O. Box 488  
Cerritos, CA 90702

### THE N4A

## PROFESSIONAL ASSOCIATION ASSISTS ACADEMIC ADVISORS FOR ATHLETES

The present state of intercollegiate athletics in American universities and colleges places unusual demands on students who wish to participate. There is competition between athletic and academic interests for the student-athlete's time, energy and attention. The belief of the National Association of Academic Advisors for Athletics (N4A) is that universities and colleges can and must provide the opportunities for student-athletes to be successful in both endeavors.

For the college-bound high school athlete, professional counseling and guidance is a must if the student is to achieve success in later years. In order to qualify academically, crucial steps must be taken early in the scholastic career of a high school student-athlete. Considering the ever-changing nature of academic entry requirements established by governing bodies such as the National Collegiate Athletic Association (NCAA) and the National Association for Intercollegiate Athletics (NAIA) it is never too early for students to begin serious preparation for college entry.

How many high school campuses have a counselor on staff versed in the latest entry requirements of the NCAA? Is there someone at each school who maintains a list of Scholastic Aptitude Test (SAT) test dates for the local area and can provide preparation materials? What are the rules governing the recruitment of the college-bound student-athlete? How are the interested school and the student-athlete affected by academic performance?

The answers to questions such as these are available to high school administrators just for the asking, through the N4A. Founded in 1975, the N4A is an elaborate professional association of academic advisors for athletes whose stated purpose is: to cultivate and improve the opportunities for academic success for student-athletes in universities and colleges by providing informed, competent and holistic advising; to enhance communication between the academic and athletic communities while serving as a liaison between those communities; and to continue to elevate the status of the profession of academic advisement of athletes.

Any person whose purpose is to assist student-athletes in the pursuit of their educational goals and who holds a position at an educational institution may become a member of the N4A. Individuals with

related interests may become affiliate members without voting privileges. The N4A has a keen interest in working with high school academic advisors, counselors and administrators to provide the most up-to-date information and assistance in preparation of the college-bound student-athlete.

Publications of the N4A include the N4A News, the association newsletter published four or five times per year, and the Academic Athletic Journal, a refereed scholarly publication that presents research and articles that pertain to the profession. Both publications are distributed to N4A members.

The N4A pays particular attention to new members joining the association or entering the profession. A special new member orientation program is presented at every national conference for first-time attendees, to get them acquainted with other new members and veterans, as well as to familiarize them with the format of the conference and the workings of the association. Additionally, a mentor service that matches new members with an experienced professional is available for those who request it.

Several commissions have been formed by the N4A to address specific areas of concern or recurring issues of importance to the association. Such topics as NCAA legislation, student-athlete recognition, minority concerns and others are addressed year-round and status reports are published in the newsletter and presented at conferences. Membership on these commissions are open to all members and wide participation is encouraged.

The N4A is divided into five regions on a mainly geographical basis. The local area belongs to N4A Region V, which includes members from California, Arizona, Oregon, Washington, Utah, New Mexico, Wyoming, Nevada, Hawaii, Alaska, Idaho and Montana.

A spin-off association based upon the same ideals and purposes of the N4A, but specifically geared to the California Community College System is the 3C4A (California Community College Association of Academic Advisors for Athletes).

For further information on N4A and 3C4A services and membership, CIF-SS member-school personnel should contact Mr. Evans Roderick, Academic Counselor for Student-Athletes at Mount San Antonio College (714) 594-5611, Ext. 394; 1100 N. Grand Ave., Walnut, CA 91789.

## AVOID LIABILITY WITH EFFECTIVE MANAGEMENT

by Glenn Lipman, Athletic Director,  
Camarillo High School and  
Terry Dobbins, Athletic Director,  
Royal High School

This article is not intended to be a technical essay written from the point of view of a computer scientist. Rather it is a practical solution to very real problems experienced by two working athletic directors who don't know bits from bytes. It is written for other athletic administrators who worry about the eligibility and liability problems caused by the increase of walk-on coaches. The by-product of our system is that it will free your coaches from collecting forms, and focus their energies on what we pay them to do — coach their teams. Our purpose is simple — to prove to you that it is in your best interest to computerize your athletic office management.

As you well know, the face of coaching has changed in the last few years. The "old time" coach was an experienced, respected, on-staff teacher who ran the whole show. He could be trusted to collect the proper forms and abide by school rules. He coaches two or three sports, had credibility and was a pillar of the community. Whereas the "new coaches" more and more are walk-ons who don't understand school procedures. They often resent time spent inventorying equipment, collecting forms, and completing bureaucratic details. They don't realize the liability problems when things aren't done correctly. Unfortunately, because of factors like declining enrollment, coaches specializing in one sport, no mandated P.E. in 11th and 12th grades, burn out, and drastic staff reductions, we are forced to rely on walk-on coaches. Statistics support that this is a state-wide trend. In a survey conducted by Southern Section C.I.F., 43% of the coaches in Southern California were walk-on coaches (4,583 out of 10,463). This increase has resulted in an additional burden for the A.D. in protecting the district from liability suits.

We all know that the number of athletic lawsuits has reached epidemic proportions. Now there is greater potential of being sued than at any time in the history of interscholastic athletics. If an athlete is injured the parents almost always expect someone else to pay the medical bills. To avoid being the targets of litigation, athletic administrators must be more conscientious and thorough than ever before. Liability, risk warnings, and participation forms are areas that administrators cannot afford to make mistakes if interscholastic athletics are to survive. We can no longer "trust" that coaches, especially walk-on coaches,

collect the proper forms and follow eligibility procedures. It seems to us that most A.D.'s are holding a time bomb in their hands. On the one hand they are accountable for too many things. On the other hand, there is only so much time in the day. The end result is that something has to be neglected. We believe that many A.D.'s are often negligent in monitoring the paper trail of their coaching staffs. We pray that the coaches follow the established procedures, but have no real idea if there are athletes on our fields who are not properly cleared. In checking eligibility, perhaps we do a better job, but it always seems at playoff time that we hear about some school with an eligibility problem causing them to forfeit a game — very embarrassing for the principal and the athletic director. Most of us take a deep breath and hope it doesn't happen to us. We suggest to you that in lieu of taking a defensive posture in handling these problems, the A.D. become a leader in changing the system.

The only efficient way to monitor the data in a large athletic program is to use the district mainframe computer to help. Just about every district has a central computer that is already programmed with enormous amounts of information about every student in your school. By taking advantage of this computer to manage your paperwork, you can streamline your eligibility process, improve your efficiency and public relations, remove chances of liability litigation, and completely remove coaches from the process. In the next few paragraphs we will describe the process pioneered by Glenn Lipman of Camarillo High School.

In our district the eligibility process involves checking eight forms: a) scholastic eligibility, b) verification of physical, c) verification of health and life insurance, d) medical authorization form, e) A.S.B. card receipt, f) transportation fee receipt, g) signed athletic code, h) form for the voluntary drug testing program. Your district probably has similar data to check. There are a number of programs available for personal computers (P.C.'s) to organize this paperwork. However, we have opted to use a program tied into the district computer because of the stored information in place. We have access to health and attendance records, personal family data, entire academic history, etc. saving us input time.

As we have said, the management of this data used to be one of the biggest headaches of our coaching staff. After we went to the computer, coaches had no responsibility for any part of it.

Our system operates in the following manner:

A) *Packet System* — the athlete picks up an athletic packet in the athletic office. This large manila envelope contains a very detailed checklist that explains what to do to become eligible and all the forms that must be completed. These packets are available three weeks before the first official practice date. We discourage coaches from handing out the packets because we want the student to get used to a central clearing area for athletics. The packets are taken home and read by the athletes and their parents.

B) *Completed Packets* — the athlete returns the completed packet to the athletic office. We use the term, "hot week," to describe the time when we will accept packets. The "hot week" usually lasts about two weeks, although we will accept packets until all athletes are cleared. When the athlete returns the material a mailing label is placed on the outside corner of the packet. This label contains the athlete's name, address, grade in school, and data processing number. We order these student labels from our data processing center and have one for every student enrolled in school.

C) *Athletic Conference* — With the athlete present the A.D. opens the athlete's computer file by typing the student number from the label on the packet into the computer. This calls up the athlete's sports file which contains the following information already in place in the computer — athlete's name, date

See **MANAGEMENT** page 19

### FOOTBALL PLAYOFFS

(Continued from page 8)

#### EIGHT-MAN LARGE DIVISION

**FIRST ROUND:** Faith Baptist 48, Webb 22; Flintridge Prep 41, Fresno Christian 19; Templeton 46, Chadwick 8; Hesperia Christian 20, Brentwood 16.  
**SEMIFINALS:** Faith Baptist 44, Flintridge Prep 6; Hesperia Christian 47, Templeton 6.

**FINALS:** Faith Baptist 52, Hesperia Christian 24.

#### EIGHT-MAN SMALL DIVISION

**FIRST ROUND:** Ambassador Christian 44, Arrowhead Christian 6; South Bay Lutheran 40, Valley Christian Academy 27; Victor Valley Christian 52, Liberty Christian 40; Antelope Valley Christian 52, Lee Vining 0; Shandon 51, Viewpoint 6; Bloomington Christian 58, Lone Pine 24; Big Pine 50, Temple Christian 8; Community Christian 74, Ribet Academy 28.

**QUARTERFINALS:** Ambassador Christian 47, South Bay Lutheran 6; Antelope Valley Christian 40, Victor Valley Christian 18; Shandon 41, Bloomington Christian 6; Big Pine 42, Community Christian 36.

**SEMIFINALS:** Antelope Valley Christian 56, Ambassador Christian 30; Big Pine 35, Shandon 29.

**FINALS:** Big Pine 46, Antelope Valley Christian 26.

## MINUTES OF SPECIAL CIF-SS EXECUTIVE COMMITTEE MEETING October 2, 1991

A special meeting of the CIF-SS Executive Committee was called to order by President Dr. Tom Jacobson at 10:30 a.m. on Wednesday, October 2, 1991 in the CIF-SS Office. All members were present with the exception of Debra Bradley, Frank Cano, Jim Fleming, Don Hagen, Edna Herring, Ray Monti, Maureen Sanders and Tom Triggs.

**1. EXECUTIVE COMMITTEE VACANCY** — Commissioner Stan Thomas announced the resignation of Girls' A.D. Representative Sheri Ross. The Committee discussed potential candidates to fill the vacancy. It was the decision of the Committee that the following candidates be presented to the full Executive Committee at their meeting of October 24 for decision: Toki Ochi, A.D., Bassett High School and Dolores Dudak, A.D., San Bernardino High School.

**2. ADMINISTRATIVE WORKSHOPS** — Commissioner Stan Thomas reported to the Committee the excellent attendance at the first two Regional Workshops, designed to orientate principals, athletic directors, activities directors and athletic secretaries to the rules and regulations and the day to day working of the CIF-SS.

**3. ARIZONA MEETING** — Commissioner Thomas advised the Committee that Dr. Voie Coy, Executive Director of the Arizona Interscholastic Association, and representatives of three Arizona schools that

### MANAGEMENT

(Continued from page 18)

of birth, grade in school, health problems, last quarter's G.P.A., academic eligibility based on the district, C.I.F., and the State standards. The rest of the terminal screen contains areas where information needs to be entered. The A.D. asks the athlete to take out the various papers. Basic information and academic eligibility are verified immediately. The A.D. examines each form and if they are completed properly, the athlete is processed. If a packet is not 100% complete, it is returned to the athlete and no clearance is given. The following information is entered into the system: a) sport, b) date the doctor signed the physical, c) date parent signed the medical release, d) date the ASB card was purchased, e) date the athletic code was signed, f) date the transportation fee was paid g) verification of health and life insurance, h) the forms for the voluntary drug prevention program are returned. Admittedly, this sounds like a monumental task, but it takes about two minutes per athlete. We really feel strongly that this one on one conference is essential to the operation of our system.

D) *Athletic Clearance* — Once the information is entered a print-out of the entire screen is given to the athlete. The athlete in turn gives this to the coach. The print-out is verification to the coach that the athlete is cleared. The

border California will be meeting with Associate Commissioner Dean Crowley to explore avenues by which the Arizona schools could compete with California schools in order to cut down transportation costs and provide competitive equity for their schools.

**4. TRANSFER RULE** — Commissioner Thomas discussed with the Committee the implications of student athletes transferring from private to public schools due to financial considerations. The Commissioner was advised that he was to continue to deal with each case on its individual merits, upholding the integrity of the rules and regulations. It should be noted exceptions to the rules could be made on an appeal to the Executive Committee Hearing Panel.

**5. RE-SECTIONING CONCERNS** — Commissioner Stan Thomas discussed with the Committee concerns relative to the possible formation of a separate Section in Orange County and possibly Riverside and San Bernardino Counties, and that he will be requesting a place on the agenda of the State Federated Council in order to advise them of the potential affect this may have on the entire State and to determine if there is any interest on the part of the State Federated Council to take a look at the entire CIF geographical structure for future study and recommendations.

**6. KCOP FOOTBALL GAME** — Commissioner Stan Thomas announced that the proposed KCOP foot-

only responsibility the coach has is to make sure that there is a print-out for each player.

E) *Forms Carried by the Coach* — The athletic packet is stored in a file cabinet and kept in the athletic office by sport. Before the first game, office help (T.A.'s) go through the packets and tear off NCR copies of the physical and medical authorization forms. We put them in a notebook and give them to the coach to carry to all games and practices.

F) *Second or Third Sports* — If an athlete goes out for a second or third sport, he comes to the athletic office and gets a print-out for the new sport. The packet is moved to the new sport and the sport is inputted into the computer. This takes about thirty seconds. Also, the athlete is required to bring to the second conference a card signed by his coach indicating that all his equipment has been turned in or is paid for. This has helped coaches cut down on "lost" equipment.

This relatively simple system will benefit your athletic program in many ways. It takes the paperwork out of the coaches hands allowing them to focus their energy on coaching not collecting forms. It provides a uniform system for collecting data for every school in your district. It puts the responsibility for getting eligible on the athlete where it belongs. It rids athletic administrators of responsibility for liability suits from improperly cleared athletes. It

ball game between LA City Champion and Southern Section Champion will be postponed for one year due to the lack of time on the part of KCOP to get sponsors and advertisers for the telecast.

**7. LAND ACQUISITION AND BUILDING COSTS** — Commissioner Stan Thomas presented an update and review of the proposed acquisition and building costs as outlined after consultation and representatives of the real estate and banking industry. Commissioner Thomas recommended, due to exorbitant initial outlay of funds which could have a serious impact on the Southern Section reserves, that the project be deferred until such time that the building fund would meet the initial funding requirements to undertake a project of this nature without putting the Section in a tenuous financial position.

There being no further business to come before the Committee, the meeting was adjourned at 12:10 p.m.

Submitted by  
DEAN CROWLEY  
ASSOCIATE COMMISSIONER

Approved by  
STAN THOMAS  
COMMISSIONER OF ATHLETICS

provides an almost instantaneous check on eligibility. It retrieves accurate information for reports, e.g., number of athletes in program, number of athletes participating in more than one sport, G.P.A. of teams, number of ineligible athletes, etc. Finally, it provides tremendous public relations support for your coaching staff by providing them with reports such as: a) alphabetical lists and phone numbers for all team members, b) mailing labels for all team members, c) master lists ranking your athletes by G.P.A., d) weekly attendance reports to coaches showing who is not going to class. This is the method used to check game day attendance. This feature is really appreciated by academic teachers.

This program can be converted easily to P.C.'s if you cannot get access to the district computer. As we have said, the obvious reason that the mainframe is superior is because of all of the information that is already in place. If you use the P.C. you have no access to grades and you cannot monitor attendance. Using the district computer, all you really have to input is numbers which is done very quickly. The total cost to put the system in place is about \$1500.00 for the terminal, the modem, the screen, and the printer, which makes it cost effective very quickly.

In conclusion, the twin problems of walk-on coaches and athletic liability are time bombs ticking away in high school athletics. Unfortunately, if mistakes are made the resulting explosion will destroy

See **MANAGEMENT** page 20

## MANAGEMENT

(Continued from page 19)

the careers of athletic administrators. The process described in this article is the state of the art that every thinking administrator should implement in his school. The by-product of this process is that it will give you the time to be more productive. The computer will manage the paperwork allowing you to be more efficient in managing the people. If you have any questions concerning this article, please contact Glenn Lipman, Camarillo High School, 4660 Mission Oaks Blvd., Camarillo, CA 93012.

*Winning  
is for a day . . .  
Sportsmanship  
is for a  
Lifetime!*

### EXECUTIVE COMMITTEE — Oct. 24, 1991

(Continued from page 6)

Upon the recommendation of the Executive Committee, the Commissioner and legal counsel Andy Paterson were directed to meet with Montclair Prep to review issues of mutual concern.

**15. REVISION OF MEMBERSHIP APPLICATION FORM** — President-elect Gary Smidderks presented a revision of the current membership application. The Executive Committee members were asked to review the document and return any suggestions for changes and/or additions for discussion at the next meeting.

#### 16. TRONA HS FOOTBALL FIELD QUESTION

— Principal Don Lucas and Varsity Football Coach Paul Branum appeared before the Committee to request that the Executive Committee remove an earlier sanction by which the Trona HS football field was declared inappropriate for CIF-SS football playoff activity. Following discussion, it was moved, seconded and passed to allow the CIF-SS staff to determine the acceptability of the Trona HS football field for football playoff contests. It should be noted that the CIF-SS staff has the authority to make the decisions with reference to the acceptability of football fields for Southern Section playoff activities.

**17. NEW MEMBERSHIP** — It was moved, seconded and passed to approve membership for the following schools: Corona Christian High School and Rialto High School. Additionally, requests for membership by Yago School (Garden Grove) and Baptist Christian HS (Norwalk) were tabled, while Ventura County Christian HS was denied membership.

There being no further business to come before the Committee, the meeting was adjourned at 6:05 p.m.

Submitted by  
DEAN CROWLEY  
ASSOCIATE COMMISSIONER

Approved by  
STAN THOMAS  
COMMISSIONER OF ATHLETICS

## IMAGINATION KEY TO FUND RAISING

The world of interscholastic athletics would provide a much improved environment for the working administrator, athletic director and/or coach, if the necessary funds were always available and in plentiful supply to conduct all of the programs a school may desire. The reality, however, is that budget constraints are becoming tighter and tighter, providing athletic departments with fewer resources and even causing the reduction of some programs.

The answer, of course, is one of the least enjoyable tasks of the athletic administrator's job: fund raising. Nearly every athletic director and coach in the vast Southern Section has been forced to involve themselves in such efforts as program advertising sales; candy, magazine subscription and Christmas tree sales; car washes, golf tournaments, lift-a-thons, hit-a-thons and raffles of all types. Fund-raising for interscholastic athletic programs not only takes hard work and determination, it requires innovative and progressive thinking. In addition to the willingness to devote time and effort to a project, the planners have got to have an attractive business angle.

At Sherman E. Burroughs High School in Ridgecrest, Assistant Principal Ed Dille and Athletic Director Don Crouse concocted an "All Sports Benefit Dinner and Concert" last Spring. The event was such a success, the school's athletic booster club gained a net profit of well over \$20,000.

A total community and school effort, several local businesses in town helped to sell tickets for the "Save a High School

Athletic Program" fund raiser. The school was able to secure the services of country music stars Bonnie Owens, Scott McQuaign, National League Umpire and part-time-singer Joe West and groups such as "The Burners" and "The Dreamers" to perform free of charge. A program published for the event featured local ads and tributes to retiring Burroughs staffers Verl Lillywhite and John Higdon.

"Thanks to the entertainers, our booster club and the people of Ridgecrest who supported this event, our actual expenses were minimal," pointed out Dille. "Because of its success, we hope to run a Spring concert-type program annually."

At Antelope Valley Christian in Lancaster, a building fund group has teamed with California Republic Bank, Adagio Homes and KUTY Radio in organizing a raffle of a new home in the area (4 bedroom, 3 bath, 2,342 square feet), valued at \$150,000. Only 5,000 "shares" (raffle tickets) are to be sold (\$100 each), giving each investor a one in 5,000 chance of being the lucky winner. The school plans to hold the drawing on March 17 at 7 p.m. on campus. The winner may have their choice of the new home or \$150,000 in cash.

Throughout the CIF-SS, many schools have been successful in the initiation of interesting fund-raisers for their athletic programs. Participation by community leaders and local businesses may certainly be the key, but the actual form a successful project takes is bound only by the imagination of its planners.

**Reebok** 

PRIMARY TITLE SPONSOR STATE-WIDE



OFFICIAL SPONSOR  
STATE-WIDE



**Wilson**  
The Official Ball . . .



**Sunny  
Delight**



**Conlin Bros.**  
Sporting Goods

**HERFF JONES**

RECOGNITION • EDUCATION • MOTIVATION