

**CIF**

**SOUTHERN  
SECTION**

# **CIF-SS BULLETIN**



**VOL. 51, NO. 6**

**JUNE 1990**



**REEBOK-MAJOR CONTRIBUTING SPONSOR**

**COCA-COLA-MAJOR SUPPORTING SPONSOR**

**Reebok<sup>®</sup>** 

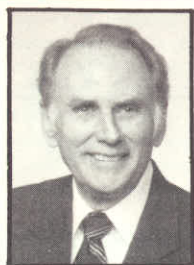


*Serving High School Athletics  
Since 1913*

see **CORPORATE** page 3



## COMMISSIONER'S CORNER



YEAR OF  
TRIAL,  
YEAR OF  
TRIUMPH

By Stan Thomas  
Commissioner of Athletics

Is it just me, or has somebody actually sped-up the clock on us? Perhaps, like the NBA, we should split the seconds by tenths in order to get more out of each and every one. As I close out my fourth year as Commissioner of the CIF Southern Section, I remain constantly amazed at the blistering pace and never-ending energy that pervades the world of interscholastic athletics.

Why, wasn't it just the other day that we went to the mat to defend the very existence of this organization? Of course, I'm referring to that wild and wacky opening week to last fall's football playoffs, when we struggled to retain the right to enforce our own rules in the face of outside intervention. Through no small effort, we maintained the right to control our destiny, as an association based upon voluntary membership and mutual governance.

You'll remember that back in September, our emphasis for the year was an across-the-boards improvement in the areas of good sportsmanship, ethical conduct and proper deportment of those involved in interscholastic athletic events. We worked hard at promoting this effort and raising the awareness level of administrators, coaches, student-athletes and officials. Yet during the year, the section suffered through an unprecedented series of serious incidents, including physical attacks on game officials.

Just a few weeks after that unnerving rash of season-ending football forfeits, we celebrated all that's right with high school athletics, with a wonderful showcase in the Division I football final at Anaheim Stadium. One of the largest CIF-SS championship-game crowds in recent years watched Fontana High, certainly one of the best prep teams in the nation, complete a perfect season with a big win over Citrus Belt League-rival San Geronimo. In fact, the overall football playoff

see COMMISSIONER'S CORNER page 4

## EXECUTIVE COMMITTEE MINUTES April 6, 1990

The April meeting of the CIF Southern Section Executive Committee was called to order by Chairman Dr. Tom Jacobson at 1:20 p.m. on Friday, April 6, 1990 at the Los Angeles Athletic Club. All members were present with the exception of Frank Cano, Ken Crowe, Dr. Jim Fleming, Cynthia Grennan, Sheri Ross and Andy Patterson.

**1. PRESIDENT'S UPDATE** - President Tom Jacobson provided an update on the recently held Executive Committee Alumni Luncheon and resolution of the Victor Valley basketball incident and the Rosary High School softball incident. Additionally, Dr. Jacobson provided information on the illness of Past-President and former Principal of Los Altos High School Pat Mauch.

**2. COMMISSIONER'S UPDATE** - Commissioner Stan Thomas reviewed with the Committee the National Federation summer meeting; proposed scheduling of hearings two times a month; the formulation of plans for the Principal and Booster Club Presidents Symposium to be held in September of 1990, possibly in the evening; the impact of year-round school on interscholastic athletic programs; playoff groupings appeals; foreign exchange programs as they relate to State athletic programs; and a review of the Catholic Athletic Association Executive Committee proposal. Additionally, Commissioner Thomas urged support of the California State Athletic Directors Association Conference to be held April 19-22 at the San Francisco Airport Marriott Hotel.

**3. BOYS' ATHLETIC DIRECTORS' UPDATE** Boys A.D. Representative Rich Ramirez updated the Committee on the upcoming State Athletic Directors Conference and the positive response he has had with reference to the CIF-SS Administrators' Symposium.

**4. TREASURER'S REPORT** - Treasurer Ken Gunn updated the Committee on the current 1989-90 working budget with reference to playoffs in the sports of basketball, soccer and wrestling. Additionally, the Committee reviewed long-range financial planning for the CIF-SS staff.

**5. SPRING PLAYOFF ACTIVITIES** - Associate Commissioner Dean Crowley, Administrators Bill Clark and Karen Hellyer reviewed with the Committee the upcoming spring playoff activities.

**6. STATE CIF REPORT** - Dr. Robert Packer, President-elect of the State Federated Council, reviewed the proposed renewal for the next three years of the Reebok contract, the State violence rule proposal to be voted on at the May State meeting, and the School Properties contract.

**7. AT-LARGE EXECUTIVE COMMITTEE MEMBER** - Following discussion, it was moved, seconded and passed that the CIF-SS Executive Committee interview for the At-large Executive Committee member position -

Dr. Debra Bradley, Principal, Cabrillo HS  
Mr. Julian Weaver, Principal, Victor Valley HS  
Ms. Edna Young, Principal, Eisenhower HS

The interviews will take place at the June 16, 1990 meeting of the CIF-SS Executive Committee.

**8. FREEWAY LEAGUE SPORTSMANSHIP PROGRAM** - Executive Committee member Tom Triggs reported on the Freeway League SportsmanSHIP Program which will become part of the Freeway League Constitution for the 1990-91 school year, with the purpose to stem violence in high school athletics.

**9. RULE 600 - OUTSIDE COMPETITION** - Executive Committee member Gary Smidderks reviewed with the Committee the proposed State

see EXECUTIVE COMMITTEE page 11

## California Interscholastic Federation Southern Section

11011 Artesia Blvd. (90701) - P.O. Box 488 (90702)  
Cerritos, CA  
(213) 860-2414 - (714) 826-5390

### OFFICERS

Dr. Tom Jacobson, Principal,  
Corona del Mar High School, President

Dr. Robert M. Packer, Superintendent,  
Duarte Unified, Past-President

Dr. Gary Smidderks, Superintendent-Principal,  
Los Angeles Baptist High School, President-Elect

Mr. Ken Gunn, Principal,  
Walnut High School, Treasurer

Mr. Stan Thomas, Commissioner of Athletics

### BULLETIN EDITOR

Mr. Scott Cathcart

CIF-SS Director of Media and Public Relations

Bulletin Published Six Times Yearly  
By CIF-Southern Section

## CIF-SS SALUTES CORPORATE PARTICIPANTS FOR 1989-90 SUPPORT

The CIF Southern Section would like to take the opportunity provided by this, the final edition of the CIF-SS Bulletin for the 1989-90 school year, to express its appreciation to the many loyal and dedicated sponsors that support the CIF-SS interscholastic athletic program.

At the top of the list is Reebok, which has made a tremendous impact upon interscholastic athletics throughout the state of California, as the major-contributing sponsor of CIF activities statewide. Coca-Cola has provided important assistance to the state-wide effort, as the California Interscholastic Federation's major-supporting sponsor.

"Speaking on behalf of the CIF Southern Section and its nearly 500 member high schools, we have enjoyed our ongoing relationship with these two outstanding proponents of high school athletics," points out Stan Thomas, CIF-SS Commissioner of Athletics. "Our relations with Reebok and Coca-Cola have been carried forward in a professional manner over the past three years, with a mutual effort in the best interest of the activities we promote and the student-athletes we

serve."

In its unique situation as the oldest and largest amateur athletic association in the state, the CIF Southern Section is also indebted to its own "Corporate Team" of loyal supporting sponsors, which include the California Angels, Conlin Brothers Sporting Goods, the Ford Motor Company, Gatorade Thirst Quencher, the Herff Jones Company, Jack-In-The-Box Restaurants, Sunny Delight Florida Citrus Punch, Turbo Nutrition and the Wilson Sporting Goods Company.

"We salute the continuing support of our Southern Section sponsors, some of whom have been with us for many years and some that have recently joined the Southern Section Corporate Team," added Thomas. "Each has displayed a genuine concern for the growth and maintenance of interscholastic athletics in our region. Their commitment to youth in our area is indeed exemplary. We look forward to a long and successful relationship with each of these fine companies and encourage those associated with high school athletics and the CIF Southern Section to patronize their fine products."

## POST-SEASON CAGE TOURNAMENT OPEN TO ALL IN 1990-91

The popular Southern Section CIF/Reebok/Ford Basketball Playoffs will feature further expansion for the 1990-91 season, allowing entry for all CIF-SS member schools desiring to participate in both boys and girls competition. The revised format will provide a third consecutive year of expansion to one of the nation's premier high school athletic events, which dates back to 1915.

The CIF-SS went to an enrollment-based playoff grouping for the 1988-89 season, to bring itself in line with the CIF/Reebok State Playoff Tournament format. Since the change, the state's oldest and largest section has enjoyed its greatest success in the state tournament, qualifying record numbers of teams (37 of a possible 40 in 1989; 39 of a possible 40 in 1990) for entry, while claiming eight state championships.

When the CIF-SS Council adopted the enrollment-based playoff format for the 1988-89 season, Southern Section post-season competition was opened to more member schools than

ever before. Playoff participation in that first year, with nine divisional championships being decided (in both boys and girls competition), totalled out at 215 boys and 214 girls teams, up from previous highs of 177 each. However, due to a minimum standard (set at 50 percent regular-season wins) for at-large entry consideration, many first-round byes were necessary to make the divisional tournament brackets workable mathematically. The long accepted process of providing three guaranteed entries per league was not changed.

For the 1989-90 season, section management expanded the divisional breakdown to 10 levels of competition and developed a 32-team bracket in each division. This opened the post-season tournaments to any member school wishing to participate, regardless of its regular-season performance, provided a spot was open in the appropriate divisional bracket. Once again, new participation records were set, with 285 boys and 257 girls teams

see BASKETBALL PLAYOFFS page 10



By Dean Crowley  
Associate  
Commissioner  
of Athletics

## SUMMERTIME RULES '90

Once again, as in the three previous June Bulletins, I would like to review rules and regulations regarding summertime activities on the part of member schools and their coaches.

When summertime athletic activity is to be conducted by Southern Section schools, the school involved **MUST ESTABLISH** appropriate rules and procedures regulating the establishment, implementation, maintenance, monitoring and accountability of each athletic activity.

This continued interpretation from the past three summers will permit member schools to use equipment, uniforms, facilities, utilities etc. for summer activity with the **APPROVAL OF THE PRINCIPAL**.

Please note CIF-SS Blue Book rules 1423 (football), 1512 (track and field/cross country), 1610 (swimming and diving), 1710 (wrestling), 1812 (basketball), 1912 (softball), 2010 (water polo), 2109 (gymnastics), 2211 (volleyball), 2308 (badminton), 2411 (baseball), 2510 (field hockey), 2608 (golf), 2710 (soccer) and 2809 (tennis).

For football, it should be noted that the use of air dummies, stand-up dummies, two and seven-man sleds, tackling dummies and protective equipment are prohibited for summer activity. With reference to rules 1423.2, 1423.3, 1423.4 and 1423.5, there will be no changes.

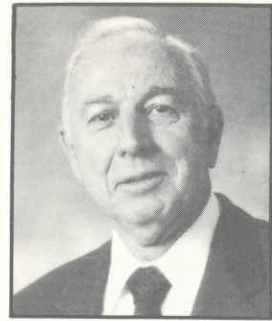
For summer services by coaches, payment may be made by the school district office, A.S.B. through the principal, or duly-licensed community organizations such as Parks and Recreation. It must be understood that coaches may not be paid directly by special interest groups, individuals, parents or booster clubs.

It should be further noted that Senate Bills 19 and 1533 direct the CIF to conduct the business of interscholastic athletics. It is not noted in this legislation that athletics are discontinued during the summer months. Therefore, we have a dilemma. It is the belief of

see RULE REVIEW page 11



## CIF-SS MOURNS PASSING OF PAT MAUCH



**PAT  
MAUCH**  
(1923-1990)

The CIF Southern Section community was saddened last month, with news of the passing of former Council President and Executive Committee Member Pat Mauch.

Mauch, 67, died April 22, after a long battle with cancer. He was less than two years into his retirement. Mauch served the Hacienda-La Puente Unified School District as a teacher, coach and administrator for 30 years. Between 1970 and 1988, he was the principal of Los Altos High School.

During his long career, Pat Mauch demonstrated time and again a tremendous devotion to youngsters in the areas of education, athletics and social services. In addition to his duties as principal, he gave of himself as president of the Sierra League, as a

member of the CIF-SS Executive Committee and State Federated Council, and as the Southern Section President from 1986 to 1988.

"It's a tragic loss," commented Los Altos High School football coach and athletic director Dwayne DeSpain, who directed the Conquerors to seven CIF-SS football crowns during Mauch's tenure. "He was so well-respected and had done so much for this school and this community. He had a clear vision of what he was going to do and where he was going to take Los Altos. The total involvement, the well-rounded kid, was his doing."

Past CIF-SS President Bob Packer, Superintendent of the neighboring Duarte Unified School District, agreed.

"Pat took Los Altos from mediocrity and made it into a respected program and it sustained," Packer said. "He demanded the things that are necessary—hard work, dedication and professionalism. I know he had as much pride in Los Altos' band and its academic achievements as he did in the football team. He took the school to the heights in (both) athletic and academic endeavors."

Mauch was a key figure in some of the most important issues facing the

CIF in the past decade. He was involved in negotiating with Reebok, the state's major corporate sponsor; instituting the "R and R" week legislation that provides student-athletes and coaches with mandatory breaks between seasons of sport; and the hiring of current CIF-SS Commissioner of Athletics Stan Thomas in 1986.

"He was one of the finest people I've ever been around," said Thomas. "A wonderful man, very inspirational. He was president when I was selected as commissioner and I had the opportunity to work with him for two years. He was very supportive, an outstanding president."

Added Packer, "the thing that characterized Pat Mauch was that he had a deep, abiding love of kids, of athletics and of the CIF. He was a wonderful role model. If you asked Pat what the most important things in his life were, No. 1 would be family."

Mauch is survived by wife Joan, with whom he raised nine wonderful children. The couple also had 24 grandchildren.

—Many thanks to Steve Hunt of the San Gabriel Valley Tribune for his contribution to this article.

### COMMISSIONER'S CORNER

(Continued from page 2)

crowds of 1989 turned out to be among the best in section history. That shows our programs are generating great interest. Our student-athletes and our activities are receiving the recognition they deserve.

Cross country, girls volleyball, water polo and girls tennis continue to grow steadily, both in terms of interest and participation. Volleyball teams from Mira Costa and La Habra brought pride to the section by capturing two of the three CIF/Reebok State Championships, while the Camarillo and Laguna Beach boys, as well as the Palos Verdes girls brought home state cross country crowns.

In the winter season, we witnessed the biggest field ever for post-season play in both boys and girls basketball, culminated by the Southern Section's best-ever showing in the CIF/Reebok State Championship Tournament. Of a possible 40 entries, the CIF-SS qualified 39 boys and girls teams, placed a section-record nine clubs into the 10 state finals games and emerged with five state crowns: Morningside (Girls Division I); Mater Dei (Boys Division I); Artesia (Boys Division II); Serve

(Boys Division III); and Santa Clara (Boys Division IV). Southern Section wrestlers were equally outstanding, capturing seven of the 13 weight-class championships at the CIF/Reebok State tournament in Stockton. In soccer, the Southern Section grappled with two serious and unfortunate playoff incidents, yet finished impressively, as the sport continued to grow in popularity.

Once again this spring, the CIF-SS and its member schools displayed the finest array of programs and student-athletes anywhere in the sports of baseball and softball, swimming and track and field, boys volleyball, boys tennis, golf, badminton and girls gymnastics.

Thanks to the continued efforts of our member-schools' administrations, the devotion of our coaches, the dedication of our student-athletes and the concern of the parents, we truly have developed and maintained a high school athletic program that is second to none. Why? Because from a philosophical viewpoint, CIF Southern Section activities are based in broad diversity and maximum participation, yet our student-athletes continue to perform on a level that is unmatched anywhere in the nation.

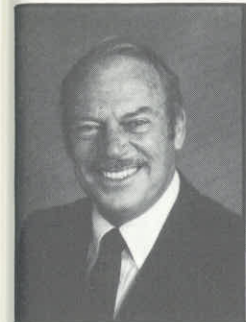
In this, the closing chapter of the year, a sincere expression of our appreciation is also in order for the many wonderful sponsors of the Southern Section and the CIF statewide. Their financial support allows our overall program to maintain its level of quality without placing further burden on our member schools. A heartfelt thanks is also in order for the members of the media, our many officials and the thousands of community and school volunteers section-wide, without whose caring and dedication we could not survive.

At the beginning of the 1989-90 school year, we set out with honorable intentions and great expectations. An effort to improve the time-honored values of interscholastic athletics, as previously mentioned, truly was a worthwhile goal. Without question, we failed to reach that goal in many cases. But be assured, we will go forth on this path.

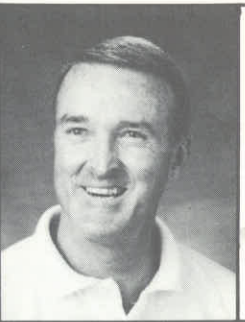
The journey one travels to reach a worthwhile goal is seldom easy to make. The road to get there is sure to be laden with bumps and detours, pitfalls and traffic jams. Expect to stumble somewhere along the way, but possess the mental toughness to continue.

see COMMISSIONER'S CORNER page 12

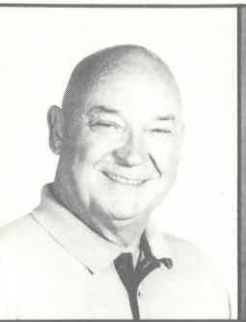
## CIF SOUTHERN SECTION HONORS SIX WITH GOLD LIFE PASS AWARD



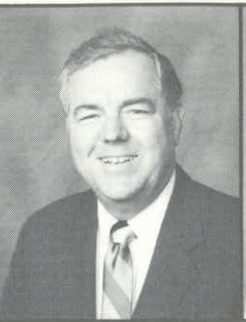
**Jim Carmichael**



**Ron Davis**



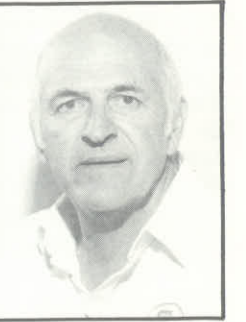
**Earl Engman**



**Bruce Keuning**



**John Mann**



**Mike Moropoulos**

At its April 26 Council Meeting, the CIF Southern Section honored six recipients for the Gold Life Pass, emblematic of the highest award the organization can bestow upon an individual for contributions to the CIF-SS and high school athletics.

The 1990 honorees include Jim Carmichael of Antelope Valley and Palmdale High Schools; Ron Davis of Corona del Mar High School; Earl Engman of Santa Ana and Saddleback High Schools; Bruce Keuning of Bellflower Christian Schools; John Mann of Gladstone and Claremont High Schools; and Mike Moropoulos of Santa Barbara High School.

Eligibility for the award includes service on the CIF-SS Council or Executive Committee or a direct contribution to the CIF-SS through management of playoff events, or serving on special committees.

Sketches of the honorees follows...

### JIM CARMICHAEL

A member of the CIF Southern Section Executive Committee from 1985 through 1989, Jim Carmichael devoted 29 years to the advancement and growth of interscholastic athletics. His experience included coaching, teaching and school administration in the Antelope Valley Union High School District.

Carmichael served as principal of Antelope Valley High School for eight years, before concluding his career in education as Principal of Palmdale High School from 1981-88. His association with the CIF Southern Section included service as President of the Golden League for four terms and as a representative to the CIF-SS Council.

### RON DAVIS

For 33 years, Ron Davis had a positive impact on high school athletics in the CIF Southern Section both in the fields of coaching and athletic administration. Davis, who retires at

the end of the 1989-90 school year, has directed an athletic program at Corona del Mar High School that produced no fewer than 34 CIF Southern Section Championships.

A graduate of the University of Redlands, Davis began his teaching and coaching career at Azusa High School, where he spent 10 years before moving to Corona del Mar in 1967. His long list of accomplishments include: National Federation Distinguished Service Awards in both 1977 and 1989; the Interscholastic Athletic Administrators Award; and the Jim Echols Award for outstanding service to high school athletics in the state of California in 1977.

Davis has served as a member of the National Federation Athletic Directors Advisory Council; Advisory Chairman for both the California Athletic Directors' and Coaches' Associations; member of the CIF-SS Season of Sports Committee; the CIF-SS Athletic Directors' Advisory Committee and the CIF-SS Classification Committee.

### EARL ENGMAN

Teaching, coaching, officiating, educational and athletic administration have all been the forte of Earl Engman, who, throughout his 40-year career, has been recognized as one of Southern California's most active and respected proponents of interscholastic athletics.

Engman, who concluded a 39-year career in the Santa Ana School District in June of 1989, has a profound list of accomplishments in athletics.

A graduate of UC Santa Barbara, where he is a member of the athletic hall of fame, Engman was head track coach at Santa Ana High for 14 years, assistant and head football coach at Santa Ana High for 17 years and head basketball coach at Rancho Santiago College for three years.

After 40 years as a football and

basketball official and track starter, he remains president of the Orange County Football Officials' Association; Secretary/Treasurer of the Orange County Track Starters Association; assignor for the Orange County Track Starters; and President-elect for the California Football Officials' Association. He is also a past-president of the Orange County Basketball Officials' Association. For the 23rd Olympiade held in Los Angeles in 1984, Engman served as manager of all running events.

His direct service to the CIF Southern Section includes 35 years of membership on the Track Coaches' Advisory Board, manager of both the Southern Section and State track and field championships meets and membership on both the CIF-SS Fees and Releaguings Committees.

### BRUCE KUENING

A member of the CIF Southern Section Executive Committee from 1974 through 1989, Bruce Keuning provided many years of service in the administration of prep athletics.

Keuning began his career in education in Grand Rapids, Michigan in 1960 and moved to Southern California in 1962, joining the staff at Betsy Ross School in Bellflower. After becoming a teacher at Bellflower Christian School, he was elevated to the position of principal at Valley Christian High School of Cerritos in 1965. In 1984, he became Superintendent of the Bellflower Christian Schools.

During his years as a member of the Executive Committee, Keuning held the position of treasurer, before being named President of the Council in 1988. He was also an active member of the CIF State Federated Council for many years as the state private school representative.

see LIFE PASS page 10



## BASKETBALL PLAYING RULE REVISIONS FOR 1990-91

Heading the list of National Federation rule changes for the 1990-91 season is major revision in the "plane" of the boundary line during a throw-in. Beginning next season, the plane, as it affects the player making a throw-in, has been deleted from the rule book. However, the opponent will not be able to break the plane. Following one warning, the offending team will be assessed a technical foul.

"When the 'plane' rule came into effect, basketball was a completely different game as it relates to a throw-in than it is today," said Dick Schindler, Editor, National Federation Basketball Rules. "The throw-in situation generally was not highly contested years ago. Now the thrower is through the plane on almost every throw-in with some part of his or her body, and the opponent is reaching through and disrupting the throw-in at the same time. To have a rule and not enforce it is unacceptable. The committee believes the rule change will remedy the situation."

Rule 2-10 regarding correction of errors, was expanded to include errors made on three- or two-point field goals, so correction limits are the same as those errors involving free throws.

In a change related to one made last year, no three-second count in the lane or five-second closely guarded count will be made during an interrupted dribble. In both of these situations, the count either will not begin or will be terminated when the dribble is interrupted.

Rule 4-5-5 was revised and simplified to address situations when teams and officials become confused and teams play in the wrong direction, sometimes for an extended period of time during which a number of goals are scored and fouls occur. The revised rule will be easier for officials to understand and administer, Schindler said.

To avoid confusion on the penalty for a double foul versus a penalty for a double technical foul, a definition has been provided for a double technical foul, as well as directions for where the first free throws will be attempted.

"In a number of situations, it has been reported that there has been confusion over contact fouls by opponents when the fouls are personal and when they are technical," Schindler said. "In the double-technical situation, officials have erroneously not attempted free throws. This clarification should help eliminate that confusion and give direction as to where the first free throw will be attempted."

In other action, the committee

recommends an "X" be placed on the floor out-of-bounds in front of the scorer to aid substitutes locating the reporting spot. Also, the ball is considered at the disposal of the person attempting a free throw when it is caught after being bounced to that individual. This addition relates to when the ball becomes alive on the second free throw which is administered by the lead official.

The home management now may extend the half-time intermission to a maximum of 15 minutes if the visiting team has been notified properly before the game. This allows more time for special half-time activities or presentations.

Two changes that will result in a technical foul are a player who lifts a teammate to secure greater height or a player who commits goaltending on a free throw.

The committee also identified two areas of concern as Points of Emphasis for the coming season. One area is the excessive use of arms and elbows, and the other is titled ethics and professionalism. The ethics issue is directed at coaches who are teaching and encouraging the use of unethical techniques during the game. The committee is hopeful that this emphasis and publicity will cause those coaches to re-evaluate their leadership role in high school basketball.

### NATIONAL FEDERATION 1990-91 BASKETBALL RULE CHANGES

- |                       |  |
|-----------------------|--|
| 2-10                  | An error made while the clock is running and the ball dead must be recognized before the second live ball.   |
| 2-11-10 Note          | Recommend an "x" 12 inches long and 2 inches wide be placed on the floor out-of-bounds directly in front of the scorer to aid substitutes locating the scorer. |
| 4-4-7b                | The ball is at the disposal of the free thrower when caught after it is bounced to him or her.   |
| 4-5-5                 | Adopted a procedure for correction when officials allow teams to go the wrong direction.   |
| 4-18-7                | Defined a double technical foul and which end first free throw is attempted.   |
| 5-5-1                 | Half-time intermission may be extended to a maximum of 15 minutes after proper notification.   |
| 7-6-3; 9-2-9; 10-1-10 | Boundary plane restriction on throw-in deleted for thrower, but following a warning it is a technical for the opponent.  |
| 9-7; 9-11-3           | No 3-second or closely-guarded count during an interrupted dribble.  |
| 10-3-9b               | A player may not lift a teammate to secure greater height.   |
| 10-3-11               | Goaltending a free throw is a technical foul.  |

#### EDITORIAL CHANGES

- |  |  |
|--|--|
| 2-5-6  | Clarified when final score has been approved.  |
| 3-2-6; 8-3   | Clarified incoming substitute can replace a designated starter to shoot a technical foul free throw. |
| 4-5-5 Note   | Doctor authorization for tights and undergarments.   |
| 4-12-1; 4-12-6   | Player control only inbound, no team control during a throw-in.                                      |
| 5-9; 10-5-4  | Clarified time-out is charged when too late to correct error or mistake.                             |
| 6-3  | Clarified what starts the alternating procedure.   |
| 7-5-8  | Following a double foul the throw-in is from the out-of-bounds spot nearest the foul.                |
| 10-1-5b  | Penalized a change in designated starter if discovered before the ball becomes alive.                |
| 10-3-8a  | Added "or from being put in play."   |
| 10-6 Pen. 6  | Reworded multiple foul penalty.  |
| Comments on rules. Optional use of 4" division line will be removed in 1993-94 season. |  |

#### POINTS OF EMPHASIS

1. Excessive use of arms and elbows.
2. Ethics and professionalism.

## MARTY ERNAGA, WALT GURNEY RECEIVE CIF-SS HALL OF FAME RECOGNITION



Azusa Athletic Director  
Walt Gurney

The CIF Southern Section adds two names to its list of Hall of Fame Recognition Awards list this spring, with the induction of retired Inglewood Football Coach Marty Ernaga and Azusa Athletic Director Walt Gurney.

The Hall of Fame Recognition Award was established in 1984, to bring public recognition to the numerous individuals who have contributed directly to the advancement of interscholastic athletics within the CIF Southern Section. Presentation of the 1990 awards will take place at meritorious ceremonies in the local areas of the recipients.

"Speaking for the Executive Committee and the member schools of the CIF Southern Section, we take great pride in honoring these most deserving recipients," noted Stan Thomas, CIF-SS Commissioner of Athletics. "The dedication and devotion to the student-athletes whom they worked with for so many years is indeed deserving of our recognition."

A biographical look at the 1990 inductees follows...

#### MARTY ERNAGA

One of Southern California's most beloved and well respected prep football coaches of all time, Marty Ernaga enjoyed a successful 36-year career that included coaching stints at Inglewood, Morningside, Lennox and Lawndale High Schools between 1942 and 1978.

Although Ernaga guided many successful teams during his tenure, his most outstanding were at Inglewood High in the early 1950s. Between 1950

and 1953, his Sentinels amassed a 32-4 record, with all four losses at the hands of the great Santa Monica teams of the era, which won back-to-back CIF-SS championships in '53-'54. Ernaga was honored by being selected to coach the Breitbard National High School All-Star Games of 1954 and 1955, in which he guided the West squad to successive wins. He coached at Inglewood from 1942 to 1953, at Morningside 1954-'55, Lennox 1956-'57 and Lawndale 1959-'78. In 1966, he assisted Head Coach Rich Brunbeck and the Lawndale eleven to a CIF-SS 2-A Division Championship.



Inglewood Football Coach  
Marty Ernaga

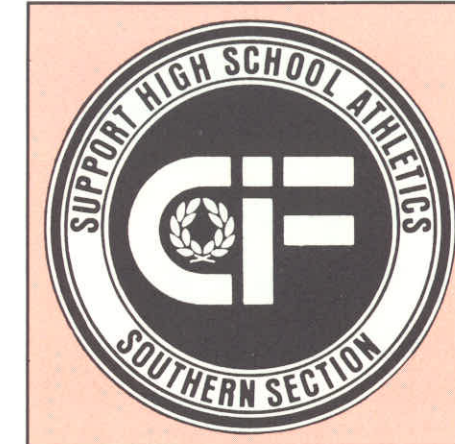
CIF Southern Section.

Gurney, who began his teaching and coaching career at Montclair High School, moved to Azusa High in the mid 1960s, where he remained until his retirement in 1989. At Montclair, he was an assistant varsity football coach and the head baseball coach for six years. He moved to Azusa to accept the head football job, continued as a varsity baseball coach and eventually became director of athletics.

As a coach, Gurney proved successful at producing winning teams in both sports, forging career winning percentages of .610 on the gridiron and .640 in baseball. He was also selected to coach in the San Gabriel Valley All-Star Football Game.

But Gurney will best be remembered for his leadership and dedicated efforts in the position of athletic director. His administrative duties included contributions to several CIF-SS advisory committees, in addition to being an officer of the Foothill-Citrus Athletic Directors' Association. During his career, Gurney was an active member of the California Coaches Association, the California Athletic Directors Association, the State Activities Directors Association, the Azusa Education Association, the Cal Teachers Association and the National Education Association.

A 1952 graduate of Burbank High School, Gurney started his association with the CIF-SS as a student-athlete. He went on to receive both his undergraduate and masters' degrees at Cal Poly San Luis Obispo.



Ernaga coached many outstanding athletes during his career, including well-known grid stars such as Ronnie Knox, Jim Sears, Ernie Zampese, Ken Maddy, Paul Lowe, Mike Battle, Fred Dryer, Jime Coleman, Dick Glover, Lee Grosscup and Joe Clark. Beyond his knowledge of the game and the on-field successes, Coach Ernaga had an uncanny ability to recognize players' talents and help them to use it to its fullest extent. His influence, motivation, moral character, discipline, ethical conduct, fairness and understanding had a life-long effect on the students and staff members with which he worked.

Perhaps Jim Sears, one of Ernaga's top players who went on to become an all-American at USC and a six-year pro, put it best when he wrote, "no one will ever forget Marty Ernaga. He is one of those special people that come along once in a lifetime."

#### WALT GURNEY

In a career spanning 30-years, Walt Gurney made outstanding contributions to high school athletics and the



## DODGERS-ADOHR FARMS HONOR 62 MEMBER SCHOOLS WITH "SHAKE FOR SPORTSMANSHIP" AWARDS



CIF Southern Section schools representing each of the member leagues will be honored at Dodger Stadium once again this spring, in the eighth-annual CIF-SS "Shake for Sportsmanship" Awards Program, sponsored by the Los Angeles Dodgers and Adohr Farms Dairies. A representative of each of the winning schools, selected by the league memberships, will be recognized and presented with a plaque prior to the start of the Dodgers-Atlanta Braves game of June 5.



### Congratulations to the 1989-90 "Shake for Sportsmanship" Award Winners

LEAGUE	SCHOOL	LEAGUE	SCHOOL
ACADEMY	California Lutheran	MARMONTE	Royal
ALPHA	L.A. Baptist	METRO	Bundy Canyon Christian
ANGELUS	None	MISSION VALLEY	Mountain View
ARROWHEAD	La Sierra Academy	MONTVIEW	Sierra Vista
BASLINE	Chaffey	MOORE	Lakewood
BAY	Palos Verdes	MOUNTAIN VIEW	Canyon Springs
CAMINO REAL	El Segundo	NORTHERN	Lompoc
CENTURY	Santa Ana	OCEAN	Redondo
CHANNEL	Ventura	OLYMPIC	Capistrano Valley Chr.
CHRISTIAN	Hesperia Christian	ORANGE	Anaheim
CITRUS BELT	San Geronio	PACIFIC	Glendale
COAST VALLEY	North County Christian	PACIFIC COAST	Laguna Beach
CONDOR	Dunn	PREP	Webb
DE ANZA	Serrano	RIO HONDO	Temple City
DELPIC	Crossroads	SAN ANDREAS	Barstow
DEL REY	None	SAN FERNANDO VAL.	Harvard
DESERT-INYO/Lg.	Kern Valley	SAN GABRIEL VAL.	Gahr
DESERT-INYO/Sm.	Trona	SANTA FE	Pater Noster
DESERT-VALLEYS	Calxico	SEA VIEW	None
EMPIRE	Loara	SIERRA	West Covina
EXPRESS	Bethel Baptist	SOUTH COAST	San Clemente
FOOTHILL	San Gabriel	SUBURBAN	La Mirada
FREEWAY	Sonora	SUNKIST	Temecula Valley
FRONTIER	Santa Ynez	SUNRISE	Connelly
GARDEN GROVE	La Quinta	SUNSET	Ocean View
GOLDEN	Antelope Valley	SUNSHINE	Notre Dame Academy
HACIENDA	Ontario	TRI-COUNTY	Templeton
HERITAGE	Viewpoint	TRI-VALLEY	Carpinteria
HI-LO	Baker	VALLE VISTA	South Hills
HORIZON	Sacred Heart of Jesus	VALLEY	Coutin
IVY	Ramona	VICTORY	Inland Christian
LIBERTY	Oakwood	WESTSIDE	Highland Hall
LOS PADRES	Morro Bay	WHITMONT	None

The schools awarded distinguished themselves in the principles of positive sportsmanship at interscholastic athletic events throughout the 1989-90 school year. Although each of the CIF-SS leagues were allowed to set their own criteria for selection, guidelines provided by the CIF-SS include participation, enthusiasm, behavior at home and on the road, treatment of opponents and treatment of contest officials. Member leagues of the CIF- Los Angeles City Section will also participate in the program this year, bringing the total number of schools involved in the program to well over 500.

"The Shake For Sportsmanship Awards for this year are particularly meaningful, as sportsmanship was proclaimed the theme for all interscholastic competition by the National Federation of State High School Associations last September," pointed out Stan Thomas, CIF-SS Commissioner of Athletics. "The schools receiving this award are to be commended for the direction provided by their administrations and coaching staffs and the positive actions of their student body memberships."

The CIF Southern Section is appreciative of the outstanding efforts of the Dodgers, for coordinating the awards ceremony, and of Adohr Farms, for underwriting the cost of awards.

## CIF-SS TEAMS, STUDENT-ATHLETES HONORED WITH ANGELS/FORD ACADEMIC AWARDS

For a fifth year, the CIF Southern Section has joined forces with the California Angels and the Ford Motor Company, to honor outstanding student-athletes for academic achievement. This spring, the program honored a record total of 226 individual Student-Athletes of the Year (129 girls, 97 boys), in addition to teams in 21 sports, honored as the 1989-90 Academic Team Champions.

The individual students honored were required to compile a minimum 3.50 grade point average (on a 4.0 scale) in college preparatory courses during their sophomore and junior years, and in the first semester of their senior year. Further qualification included participation in a varsity sport and an additional extracurricular activity during their senior year.

The Academic Team Champions were determined by combined grade point averages of squad members in official CIF-SS varsity sports. For consideration, the team GPA was required to be in excess of 3.0 in college preparatory courses during the first semester of the 1989-90 school year. All members of teams that met the minimum will be provided with certificates to honor the achievement.

The Student-Athletes of the Year and all members of the Academic Team Champions' rosters will be honored in ceremonies at Anaheim Stadium prior to the Angels-Kansas City Royals game of June 12. Each Academic Team Champion will be presented with a championship banner for permanent display on campus.

### STUDENT-ATHLETES OF THE YEAR

#### GIRLS

Agoura - Karen Clemens; 3.56  
Alta Loma - Ana Lilia Alvarez; 3.73  
Alverno - Candace Nakagawa; 3.80  
Apple Valley - Laura Cantrell; 3.73  
Apple Valley Christian - Jodi Mikels; 4.0  
Arrowhead Christian Academy - Ester Prins; 4.0  
Arroyo - Sandra Diaz; 3.5  
Avalon - Kirsten Doult; 3.96  
Baptist Christian - Alesa Lynn Ramseyer; 4.0  
Big Pine - Michael Bacoeh; 3.97  
Bonita - Minhduong Thuy Ta; 4.0  
Brawley - Jeanette Cabanilla; 3.97  
Brea Olinda - Nancy Chabot; 4.0  
Buena Park - Hajnal H. Barta; 3.61  
Burbank - Jennifer Jonas; 3.89  
Burroughs (B) - Jennifer Matheson; 3.62  
Cabrillo - Tawnya L. Ayala; 3.86  
Calxico - Alma Durazo; 3.74  
Calvary Chapel/Santa Ana - Christa Echan; 3.63  
Canyon/CC - Ann Bertola; 3.50

see ACADEMIC AWARDS page 12



### CIF-SS ANGELS/FORD 1989-90 ACADEMIC TEAM CHAMPIONS

SPORT	WINNING SCHOOL	GPA
Badminton	Rosemead	3.69
Baseball	Pasadena Poly	3.56
Boys Basketball	Whitney	3.65
Girls Basketball	Arrowhead Christian Academy	3.80
Boys Cross Country	Dos Pueblos	3.69
Girls Cross Country	Arrowhead Christian Academy	3.81
Football	Pasadena Poly	3.35
Golf	Trabuco Hills	3.51
Boys Soccer	Whitney	3.46
Girls Soccer	Rio Mesa	3.47
Softball	Linfield	3.44
Boys Swimming	Whitney	3.57
Girls Swimming	Whitney	3.64
Boys Tennis	John W. North	3.76
Girls Tennis	John Glenn	3.75
Boys Track	Whitney	3.53
Girls Track	Nordhoff	3.54
Boys Volleyball	Pilgrim	3.41
Girls Volleyball	Arrowhead Christian Academy	3.78
Water Polo	Long Beach Wilson	3.53
Wrestling	Harvard	3.31



**LIFE PASS***(Continued from page 5)***JOHN MANN**

A longtime supporter of interscholastic athletics and the CIF Southern Section, John Mann served as president of both the Hacienda and Baseline Leagues during his administrative tenure.

From 1964 to 1975, Mann served as principal of Gladstone High School in Covina, and from 1975 through 1984 as principal of Claremont High School. Mann concluded his 34-years in secondary education in the position of Superintendent of the Julien Union High School District from 1984 through 1988. Today, he remains active in the field as an associate professor of education at Azusa Pacific University.

**BASKETBALL PLAYOFFS***(Continued from page 3)*

gaining entry.

At those levels, surely no deserving teams would be left out, right? Wrong. Because of the numbers within the enrollment-based divisions, the system provided post-season play for one school's 0-22 team, yet left out another which had finished at 15-7. The inequity of the system stemmed from the fact that the 10 divisions were not of equal number, due to the hard and fast CIF State breaking points (Division I - 2,000 enrollment and up; Division II - 1,500 to 1,999; Division III - 1,000 to 1,499; Division IV - 400 to 999; and Division V - 399 and below).

Thus, in some divisions, a team could gain playoff entry simply because 32-or-less schools existed in the division, while others were submitted to subjective competition for entry. In divisions where more schools applied for at-large entry than there were existing openings, a five-point "power rating" was used for elimination. The CIF-SS realized that using a non-scientific method to determine which team "on the bubble" should gain an at-large berth over another could not produce a result satisfactory for all concerned.

To alleviate the inequity for the 1990-91 playoffs and beyond, Southern Section management, working in conjunction with a panel of member-school coaches, has decided to allow all schools desiring to gain playoff entry the right to do so, regardless of their regular-season performance or enrollment size. The championship divisional tournament brackets will be maintained at 32-team draws, but a single qualifying or "Wild-Card" round will be added, allowing for at-large entry

After beginning his teaching career out of state, Mann moved to Southern California in 1957, where he joined the faculty at Azusa High School as a math teacher, assistant football coach, counselor and finally assistant principal.

**MIKE MOROPOULOS**

In a career spanning 35 years, Mike Moropoulos displayed tremendous dedication and devotion to Santa Barbara High School, high school athletics and the CIF Southern Section.

A 1955 graduate of UC Santa Barbara, Moropoulos was captain and most valuable player of the football team as a collegian. During his long tenure at SBHS, he taught physical education and biology, coached football, baseball, swimming and golf. He spent two years as an assistant principal and was named director of athletics

decisions to be made on the court, rather than by committee.

In divisions where there are more than 32 schools by enrollment, Wild Card-round games will be played, paring the field to an even 32 teams prior to the first round. As in all other CIF-SS sports, the leagues will make their entries known to the CIF-SS Office in advance of the designated pairings announcement date. League entries will be made based upon the requests of its member schools.

Each league will also be charged with the responsibility—as in all other sports—of designating a priority order for its member-school entries for pairing purposes. CIF-SS tournament management will place schools in the 32-team brackets or necessary Wild Card-round games on the following priority basis: 1.) league champion; 2.) league runner-up; 3.) league third place finish; 4.) lower than league third-place league finish. Wherever possible, tournament management will follow established and accepted guidelines in pairing the tournament brackets (i.e., league champions versus third-place teams or at-large entries in first-round games, league champions earning first-round home games, etc.). The Southern Section will also maintain the single-elimination format of competition, progressing to a championship final in each of 10 enrollment-based divisions (two per each of the five state divisions).

A further change will deal with new name designations for the Southern Section Divisions. Beginning in the 1990-91 season, the CIF-SS's highest enrollment divisions will be designated as Division I-AA and I-A, rather than 5-AA and 5-A, corresponding to the CIF State Divisions. Accordingly, Divi-

in 1965, a position he held until his retirement in 1989. As the head football coach between 1975 and 1980, Moropoulos coached the Dons to a 42-19-1 record, two Channel League titles and an appearance in the 1980 CIF-SS Coastal Conference Championship game. In golf, his team won seven-straight league crowns between 1967 and 1973, in addition to a CIF-SS title in 1973.

Moropoulos was honored by the California State Athletic Directors' Association as the Southern Section Athletic Director of the Year in 1980. He served the CIF-SS as a member of the Football Coaches' Advisory Committee, Athletic Directors' Advisory Staff and finally as Boys' Athletic Directors' Representative to the Executive Committee between 1983-1989.

sions 4-AA and 4-A will become II-AA and II-A; Divisions 3-AA and 3-A will become III-AA and III-A; Divisions 2-AA and 2-A will become IV-AA and IV-A; and Division 1-A and the Small Schools Division will become V-AA and V-A.

In high school basketball nationally, the trend for all to play in post-season championship tournaments is on the rise. The state of Indiana and others have proven the open format to be a highly successful activity for many years. CIF Southern Section management, with the interest of improving its service to the member schools and student-athletes under its wing of administration, looks forward to the largest, most equitable, and exciting post-season basketball tournament of all-time in the 1990-91 season.

**SOUTHERN SECTION  
CIF/REEBOK/FORD  
PROPOSED 1990-91  
BASKETBALL PLAYOFF  
SCHEDULE  
(All Divisions)**

**WILD CARD ROUND**

Boys - Tuesday, Feb. 12, 1991  
Girls - Wednesday, Feb. 13, 1991

**FIRST ROUND**

Boys - Friday, Feb. 15, 1991  
Girls - Saturday, Feb. 16, 1991

**SECOND ROUND**

Boys - Tuesday, Feb. 19, 1991  
Girls - Wednesday, Feb. 20, 1991

**QUARTERFINALS**

Boys - Friday, Feb. 22, 1991  
Girls - Saturday, Feb. 23, 1991

**SEMIFINALS**

Boys - Tuesday, Feb. 26, 1991  
Girls - Wednesday, Feb. 27, 1991

**CHAMPIONSHIP FINALS**

Boys & Girls - Fri.-Sat., Mar. 1-2

## CREATIVE SCHEDULING NEEDED TO EASE SHORTAGE OF OFFICIALS

The CIF Southern Section has authorized the officials liaisons section-wide to meet with each of the leagues in their areas to develop a plan for utilizing officials on all days of the week in sports lacking sufficient numbers of officials to go around.

It is the responsibility of the liaison to work with the leagues to promote fair and equitable competition where assignment of officials is concerned. Long range schedule planning will facilitate the best use of officials in those sports that have been identified as having shortages. This may involve a shift from the traditional Tuesday-Friday or Wednesday-Friday scheduling formats within the leagues. It may also call for creative time changes, especially concerning afternoon contests.

The CIF-SS Office strongly recom-

mends each of its member leagues to extend the highest level of cooperation with their area liaison in the develop of new scheduling formats. The shortages and availability of officials mandates our flexibility, section-wide.

It is also time to remind athletic directors to produce accurate athletic schedules for the liaisons and assigners for the 1990-91 school year. Please give special consideration to sites, dates, opponents, levels of competition, etc. For your review, listed below are your schedule due-dates for each of the three seasons of sport:

FALL SEASON (1990) - May 1, 1990; WINTER SEASON (1990-91) - June 1, 1990; SPRING SEASON (1991) - November 1, 1990.

Special consideration for any adjustment or extension to these deadlines must be approved by the area liaison.

**EXECUTIVE MINUTES***(Continued from page 2)*

repeal of Rule 600 (outside competition). It should be noted that this is an action item for the Southern Section Council meeting of April 26, and the Council's vote will give voting direction to the Southern Section delegates at the May 4-5, 1990 State Federated Council meeting.

**10. BLUE BOOK COMMITTEE - SUMMER DEAD PERIOD** - Mr. Mike Shanahan, speaking on behalf of Chairperson Ron Barney, discussed the summer dead period proposal which was tabled at the January 18, 1990 meeting of the CIF-SS Council. This will be an action item at the April 26, 1990 meeting of the CIF-SS Council.

**RULE REVIEW***(Continued from page 3)*

our section officers that in order to comply with our legislative mandate, state by-laws and section rules and regulations, that administrators (specifically superintendents and principals) are accountable for summer programs in their respective districts or schools.

It should be noted that schools may not start summer competitive activities until such time as school is out for the summer.

The only exception to this rule would be the L.A. Games (formerly the Watts Summer Games), sponsored by the Los Angeles Junior Chamber of Commerce. The L.A. Games are scheduled to begin the weekend of June 23.

If you have any questions or concerns relative to summer competition or programs, please feel free to contact any administrator at the CIF-SS Office.

**11. CIF-SS PROPOSED VIOLENCE RULE** - Gary Smidderks reviewed with the Committee a proposed violence rule for the CIF Southern Section. Following discussion, it was moved, seconded and passed to withdraw the Southern Section proposal in place of the State proposal on violence which will be voted on by the Southern Section Council at the April 26, 1990 meeting in order that the Southern Section delegates to the State Federated Council will have voting direction. The State recommendation is as follows:

"Any student who perpetrates, or counsels, advises, instigates or causes the perpetration of a physical assault upon the person of the game or event official, shall be barred from interscholastic activity for the remainder of the student's eligibility."

Additionally, following discussion, it was moved, seconded and passed by the Executive Committee to support the State Rule Proposal on Violence.

**12. FILLMORE HIGH SCHOOL REQUEST** - Mr. Mike Shanahan reviewed the request from Fillmore High School regarding fall football practice. After reviewing previous correspondence, it was the decision of the Committee that the Office will handle the request by benefit of the current rules and regulations in place.

**13. NEW MEMBERSHIP** - Following discussion, it was moved, seconded and passed to approve membership for Southridge Middle School, Fontana. (It should be noted this membership is for associate membership at the 9th grade only).

There being no further business to come before the Committee, the meeting adjourned at 5:10 p.m.

Submitted by:  
DEAN CROWLEY,  
ASSOCIATE COMMISSIONER

Approved by:  
STAN THOMAS,  
COMMISSIONER OF ATHLETICS

## GOLF FUND-RAISER SET FOR JUNE 28

In conjunction with the Southern California High School Golf Coaches Association, the CIF Southern Section will conduct its fourth annual Invitational Golf Tournament at California Country Club in Whittier on Thursday, June 28.

The "Shotgun-Scramble" tourney will begin at 2 p.m., with three levels of competition based on four-player teams. After play, a no-host reception begins at 7 p.m., followed by a barbeque dinner, awards ceremony and raffle. The tournament, which has gained popularity each year, will again benefit high school golf in the CIF Southern Section.

Golfers interested in participating may enter as singles, twosomes, threesomes or four-somes. The tournament entry fee (including dinner, electric cart and tee package) is just \$85 per player. Dinner only is \$25. The tournament committee also welcomes tee sponsorships at \$100 per hole, half-sponsorships at \$50 per hole and donations of raffle prizes, tee package materials or gifts to support high school golf.

So come on out for a great day on a beautiful course and help us to fill our field limit for a first time ever. For further information, please contact Kay Larson at the CIF-SS Office, (213) 860-2414 or (714) 826-5390.

## CIF-SS FALL PACKETS AVAILABLE FOR PICK-UP

**AUG. 22, 1990**

**CIF SOUTHERN SECTION  
OFFICE**

**11011 E. ARTESIA BLVD.  
CERRITOS, CA 90701**

**(213) 860-2414  
(714) 826-5390**



**ACADEMIC AWARDS***(Continued from page 9)*

Capistrano Valley Christian - Laurel Le Perre; 3.80  
 Cerritos - Winny Jahn; 4.0  
 Chadwick - Joann Giaconii; 3.92  
 Channel Islands - Mercedes Gorre; 4.0  
 Chino - Julie Rodriguez; 3.92  
 Claremont - Sarah Roth; 4.0  
 Claremont (GG) - Amy Miller; 3.56  
 Coast Christian - Jeanie Watson; 3.87  
 Crescenta Val. - Deborah von Speierman; 3.95  
 Cypress - Stacie Kosaka; 3.81  
 Diamond Bar - Ann Luecha; 4.0  
 Dos Pueblos - Natasha Soltysik; 4.0  
 Downey - Linda Chen; 4.0  
 Eisenhower - Natalie Angle; 3.61  
 El Monte - Lisa Barajas; 3.62  
 El Segundo - Shane Selph; 3.85  
 Fillmore - April L. Ponce; 3.58  
 Flintridge Prep - Angela Bradley; 3.92  
 Foothill - Sionainn Marcoux; 3.75  
 Glendale - Lydia Tompauskas; 3.72  
 John Glenn - Kimlien Thi Vu; 4.0  
 Hemet - Paula Preshaw; 3.97  
 Immanuel Christian - Jessica Blacketter; 4.0  
 Inglewood - Tovi Cydney Scruggs; 4.0  
 Mark Keppel - Tricia Chee; 3.52  
 La Canada - Yolanda Davidian; 3.76  
 La Habra - Letitia Williams; 3.96  
 La Reina - Heather Freeman; 4.0  
 La Serna - Michelle Larson; 3.92  
 La Sierra - Lis Zuloaga; 3.91  
 La Sierra Academy - Lisa Metcalfe; 3.52  
 Laguna Hills - Marlo Smith; 3.93  
 Leffingwell Christian - Karen Brown; 3.71  
 Leuzinger - Tuong-Thuy Hoang; 3.93  
 Linfield - Jeanne D. Rheingans; 3.53  
 Loara - Dorothy Hsieh; 4.0  
 Los Alamitos - Kimberly Rubino; 4.0  
 Mammoth - Linda Adamson; 3.69  
 Marlborough - Ann Whittemore; 3.71  
 Mary Star of the Sea - Ann Marie Pena; 4.0  
 Mater Dei - Theresa M. Conway; 3.64  
 Mira Costa - Heidi Eick; 3.67  
 Mission College Prep - Christine Mott; 3.93  
 Mission Viejo - Cynthia Kopper; 3.96  
 Moorpark - Erin Patricia Kelley; 3.81  
 New Life Chr. Academy - Deanna Youngren; 4.0  
 Newbury Park - Laree Reynolds; 3.93  
 Newport Harbor - Julie N. Thomas; 3.65  
 Nogales - Bernice Lo; 3.64  
 Norco - Michelle E. Weststeyn; 4.0  
 North County Christian - Jenny Layton; 3.92  
 John W. North - Alice Tsai; 3.88  
 Notre Dame (R) - Theresa Cherry; 3.65  
 Oak Park - Jennifer Hildebrandt; 4.0  
 Ontario Christian - Becky Klop; 4.0  
 Palm Springs - Lianne Peterson; 3.89  
 Paraclete - Jean Harvey; 3.64  
 Paramount - Beth Bredice; 4.0  
 Pilgrim - Ngozi Ogbunamiri; 3.84  
 Providence - Haylee Canlas; 4.0  
 Redondo Union - Jody Lindwall; 3.52  
 Rim of the World - Suzanne Harker; 3.86  
 Rio Mesa - Rachel Herting; 3.69  
 Rosary - Rachel L. Bosi; 3.93  
 Rosemead - Pamela Adkins; 4.0  
 Royal - Laura Perez; 4.0  
 Rubidoux - Tiffany Kendall; 3.88  
 Saddleback - Tracy Reines; 3.60  
 Saint Anthony - Jennifer Furlow; 3.75  
 Saint Bonaventure - Susanne Carey; 4.0  
 Saint Joseph (L) - Barbara Paluska; 3.92  
 Saint Lucy's Priory - Amy Kohls; 3.63  
 Saint Matthias - Consuelo Vallejan; 3.56  
 San Geronio - Alison Grace Clith; 3.73  
 San Luis Obispo - Jana Kokkonen; 4.0  
 San Marcos - Kristin Abbott; 3.96  
 Santa Ana - Genevieve Siri; 3.54  
 Savanna - Leila Khatib; 3.81  
 Schurr - Lisa Ma; 3.62  
 Serrano - Stacy Ryan; 4.0  
 Sierra Vista - Elaine Hsieh; 4.0  
 Silver Valley - Tara Wallace; 3.78  
 Sonora - Stacey Pommerenck; 3.5  
 South Torrance - Maria Kao; 4.0  
 Sunny Hills - Maura Phyllis Grundmeyer; 3.5  
 Tehachapi - Stacey Kingsbury; 4.0  
 Temple Christian - Wanda Gates; 3.75  
 Temple City - Tina Mai; 3.82

Tustin - Jennifer Maclean; 3.65  
 Twenty-nine Palms - Regina Kelley; 3.50  
 Ventura - Jackie Micaela Bauleke; 3.89  
 Warren - Ja Ku; 4.0  
 West Torrance - Mary B. Litzenberg; 3.92  
 Western - Lisa Gravel; 3.91  
 Westlake (LA) - Catherine Tiangha; 3.56  
 Whittier Christian - Jennifer Jackson; 3.63  
 Wilson (HH) - Ashley E. Henderson; 3.67  
 Wilson (LB) - Jennifer Ingram; 4.0  
 Woodcrest Christian - Julie Thompson; 4.0

**BOYS**

Agoura - Russ Cucina; 3.96  
 Apple Valley - Mark Olin; 3.62  
 Arrowhead Christian - David B. Bouslough; 3.97  
 Bishop - Chad Stein; 3.75  
 Brawley - Richard Harmon; 3.96  
 Brea Olinda - Andrew Yinger; 3.96  
 Buena Park - Andrew C. Carey; 3.87  
 Burbank - Casey D. Grigg; 3.76  
 Burroughs (B) - Marnie Calderon; 3.57  
 Cabrillo - Brian C. McCune; 3.69  
 Canyon (A) - Zach Cooper; 3.56  
 Canyon (CC) - Dan Berkeland; 3.81  
 Capistrano Valley Chr. - Aaron Martin; 3.64  
 Central - William Browning III; 3.95  
 Cerritos - Seth Michael Grossman; 3.86  
 Chadwick - Rodney Wallace; 3.72  
 Channel Islands - Robin Jin-Hoon Song; 3.88  
 Chino - Thomas Eide; 3.8  
 Claremont - Jesse Knapp; 3.95  
 Claremont (GG) - Brian G. Wetsch; 3.8  
 Colton - Kyle Kurr; 3.92  
 Crescenta Valley - Mitchell Conover; 3.95  
 Crespi - Lucas Freeman; 3.96  
 Cypress - Cory Senko; 3.70  
 Damien - Anthony Vena; 3.89  
 Desert - Russel David White; 3.54  
 Dos Pueblos - Ricky Yamada; 3.88  
 Downey - Troy Kolar; 3.77  
 El Monte - Luan Thai; 3.54  
 El Segundo - Scott Panfil; 3.81  
 Elsinore Christian - James Vanderzwan; 3.68  
 Estancia - John Tang; 3.79  
 Fillmore - Kenneth Zell; 4.0  
 Flintridge Prep - Shaun Kunisaki; 4.0  
 Foothill - Kent Donnelly; 3.68  
 Glendale - Won Yang; 3.75  
 Hemet - Chad Warren; 3.93  
 Inglewood - Ernest J. Clark, Jr.; 3.72  
 La Habra - Gregory Vrablik; 3.96  
 La Puente - Thomas A. Marquez; 3.57  
 La Serna - Jeff Sung; 4.0  
 La Sierra - Joel Leonor; 3.61  
 Laguna Beach - John Van Uden; 3.88  
 Laguna Hills - David Oh; 3.96  
 Loara - Sean Conner; 3.96  
 Los Angeles Lutheran - Stephen Willweber; 4.0  
 Loyola - Joseph Burghardt; 3.88  
 Mammoth - Craig Thompson; 4.0  
 Mater Dei - Douglas De Jardin; 3.8

Mira Costa - Canyon Ceman; 4.0  
 Mission College Prep - Matthew Weber; 3.86  
 Mission Viejo - Jon Gerondale; 3.85  
 John Muir - Nghia Ngo; 3.68  
 Norco - Robert J. Millington; 4.0  
 North County Christian - Christopher Key; 4.0  
 John W. North - Joseph Chang; 3.61  
 Notre Dame (S.O.) - Timothy Elliott; 3.60  
 Notre Dame (R) - Matthew Kraemer; 3.91  
 Oak Park - Kenneth W. Ward; 3.96  
 Ocean View - Andrew Wind; 3.67  
 Ontario Christian - Mark Swangel; 3.64  
 Pacific Christian - Ted Papagiannis; 4.0  
 Palos Verdes - Christopher Cormier; 4.0  
 Paraclete - Erik Scott; 3.75  
 Paso Robles - Jonn Erb; 3.96  
 Quartz Hill - James Higa; 3.62  
 Redondo Union - Neil Andersen; 3.55  
 Rim of the World - Cary Culbertson; 3.89  
 Rio Mesa - Daniel Barone; 3.85  
 Royal - David Gnesda; 3.92  
 Saddleback - Robert Bud Price; 4.0  
 Saint Anthony - Adam Warot; 3.71  
 Saint Bonaventure - Christopher Conley; 3.88  
 Saint John Bosco - Jason Haye; 3.67  
 Saint Margaret's - Guy Adrian Chammas; 3.94  
 San Luis Obispo - Sadler Nelson; 4.0  
 San Marcos - Hernan E. Rodriguez; 3.84  
 Santa Ana - Jeffrey J. Fuentes; 3.85  
 Santa Maria - Hoollyo Marsden; 3.62  
 Schurr - Stephen Loh; 3.96  
 Serrano - John D. Golden; 3.91  
 Servite - Michael S. Kroll; 3.68  
 Sierra Vista - Jae Hong; 3.96  
 Silver Valley - Duane Willis; 3.52  
 Sonora - Anthony Choe; 4.0  
 South Torrance - Brian Lee; 4.0  
 Southern Cal. Christian - Matt Cowan; 4.0  
 Temple City - Paul Moore; 3.96  
 Tustin - Andrew Bermudez; 3.77  
 Ventura - Kevin Ka Hung Kwan; 3.93  
 Villanova Prep - Norman Kawakuchi; 3.76  
 Warren - Chris Benadom; 3.95  
 West Torrance - Joe Miles; 3.70  
 Western - Robert Southern; 3.8  
 Westlake - David Meriage; 3.77  
 Whittier Christian - Alex Davila; 3.88  
 Wilson (LB) - Alan Ebricht; 3.65

**COMMISSIONERS CORNER***(Continued from page 4)*

ue. The obstacles to our goal must be met head on and overcome.

Congratulations on your many successes, CIF Southern Section, but continue to strive for excellence. Best wishes to you all for a pleasant summer.

**Reebok** 

MAJOR STATE WIDE CIF CONTRIBUTING SPONSOR

**Confin Bros**  
*Sporting Goods***Wilson****HERFF JONES**  
*... a tradition of excellence***TURBO**  
NUTRITION**Sunny Delight**