



CIF-SS BULLETIN



VOL. 52, NO. 3

JANUARY-FEBRUARY 1991

ATHLETIC ADMINISTRATORS' SYMPOSIUM, FEB. 6: "BUILDING A FUTURE FOR THE '90s"

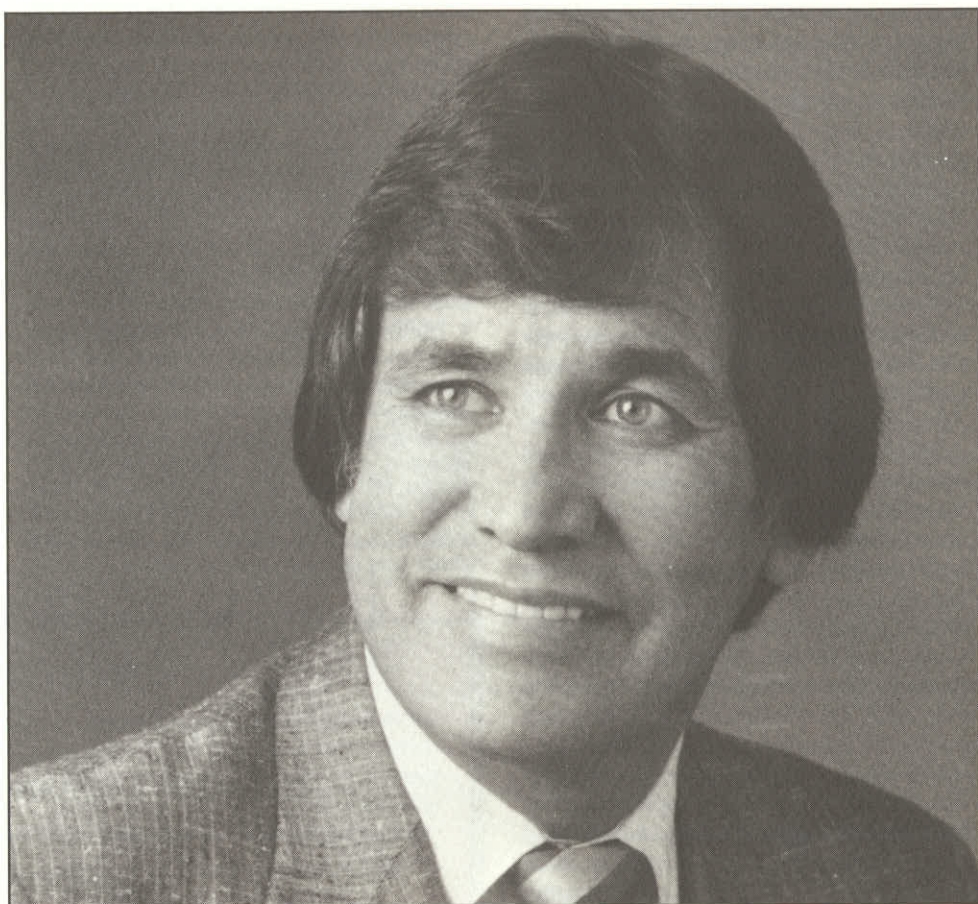
The California Interscholastic Federation Southern Section will conduct its 12th annual Athletic Administrators' Symposium, entitled "Building a Future for the '90s," on Wednesday, February 6 at the Sequoia Athletic Club in Buena Park.

This year's Symposium will offer several speakers who will be discussing the issues facing the athletic programs of CIF-SS member schools in the new decade.

Topping the list will be Olympic Gold Medalist and world record-setting distance runner Billy Mills, who overcame the hardships of life on an Indian reservation to become a world champion. Among the country's most dynamic motivational speakers, Mills' success story is one that all involved in athletics will want to pay close attention to. His delivery will provide those in attendance with a refreshed spirit and rekindled inspiration in performing the day-to-day duties of coaching, counseling and administration.

The Symposium will also feature Bill Wolfe, who will show how to laugh your way to less job stress. An award-winning writer-producer-broadcaster for KNX-CBS Radio in Los Angeles, Wolfe's powerful self-help hints can be quickly applied on the job. He is the author of several well-received non-fiction books on human

see SYMPOSIUM page 5



KEYNOTE SPEAKER — Olympic Champion Billy Mills.

REEBOK: PRIMARY TITLE SPONSOR-STATE CIF

WILSON, JACK-IN-THE-BOX CONTINUE SUPPORT

Wilson
The Official Ball . . .

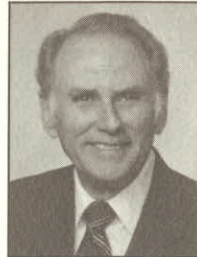
**LONGTIME SOUTHERN SECTION
SPONSORS MAINTAIN
PREP SPORTS COMMITMENT**

See CORPORATE page 3



*Serving High School Athletics
Since 1913*

COMMISSIONER'S CORNER



HAIL TO THE PARTICIPANTS

By Stan Thomas
Commissioner of Athletics

To begin, a hearty Happy New Year to everyone associated with the CIF Southern Section athletic program: student-athletes, coaches, school administrators, contest officials, members of the media and parent-boosters. Here's wishing you success and good luck in all of your 1991 endeavors.

I'd like to take this opportunity to reflect upon this past fall's playoff activities and extend my personal congratulations to all of the participating teams and individual athletes. Here too is a special tip of the cap to the many who met the challenge, went the distance and achieved their ultimate goal: winning a CIF Southern Section or State championship.

The concept of "many" might be an understatement. This past playoff period, the CIF-SS organized more divisional championship tournaments, conducted more playoff contests and presented more awards than ever before. A grand total of 42 divisional team champions were determined in head-to-head competition on the fields, courts, courses and pools of the five fall sports. By comparison, 33 teams won fall-sport championships in 1989.

Some have said our post-season competition is diluted and our championships less meaningful, due to increased divisional playoff groupings and greater numbers of qualifying teams. But before we accept that conclusion, let's take a closer look at the actual competition.

In the recently-concluded football playoffs, for instance, just three top-seeded teams in the 10 divisional tournaments were able to win championships. In fact, of the 20 divisional finalists, nine were unseeded entries and eight did not win their own league title. What's more, three teams — Loyola in Division I, Capistrano Valley in Division II and Arlington in Division IV — rose from third-place league finishes to win it all. Out of 315 schools fielding 11-man football teams, just three — Division III-champion Esperanza, Division V-champion Etiwanda and Division IX-

see COMMISSIONER'S CORNER page 5

EXECUTIVE COMMITTEE MINUTES

October 24, 1990

The October meeting of the California Interscholastic Federation, Southern Section, Executive Committee was called to order by Chairman Dr. Tom Jacobson at 1:05 p.m. on Wednesday, October 24, 1990 at the CIF-SS Office. All members were present with the exception of Ken Crowe and Cynthia Grennan.

1. PRESIDENT'S UPDATE — President Dr. Tom Jacobson reviewed with the Committee the Region 7/8 Meeting held in Anchorage, Alaska. Additionally, he reviewed with the Committee the responsibility and role of the Administrative Committee and reviewed the State Governance proposal relative to the nomination process for the State CIF Executive Committee. Dr. Jacobson also reviewed concerns relative to Council meetings missed by the Valley League, Victory League and Liberty League. It should be noted that under the provisions of Article 4, Section 40 of the CIF Constitution and By-Laws, leagues have the responsibility of attendance at regularly scheduled Council meetings.

2. COMMISSIONER'S UPDATE — Commissioner Stan Thomas updated the Committee on the increasing number of eligibility appeal hearings; the on-going Montclair Prep investigation; the AAF Coaching Education Program in soccer and track and field; the Principal/Booster Club Workshops; the New Principal/A.D. Orientation; and the CIF-SS Administrators Symposium set for Wednesday, February 6, at the Sequoia Athletic Club in Buena Park.

3. ELIGIBILITY REVIEW — Glen Massengale, Principal, and Ron Butts, Athletic Director of Victor Valley High School appeared before the Committee to review the eligibility status of Carlton Hyder, a Victor Valley High School basketball player. Following discussion, it was moved, seconded and passed to reinstate full athletic eligibility, effective December 6, 1990. Prior to resuming participation on December 6, the Committee has requested that Carlton appear

at the meeting of November 27, 1990 in order that he fully understand the ramification of his prior suspension and pending reinstatement.

4. GIRLS' A.D. UPDATE — Girls' Athletic Director Representative Sheri Ross reported on the National Athletic Directors Conference to be held in Orange County on Saturday, November 17, 1990. Additionally, Ms. Ross discussed sportsmanship concerns with the Committee.

5. BOYS' A.D. UPDATE — Rich Ramirez, Boys' Athletic Director Representative, reported ongoing concerns on the part of Activities Directors relative to sportsmanship and the conduct of both teams and coaches which at times portray the negative side of interscholastic athletics.

7. TREASURER'S REPORT — Ken Gunn, Treasurer, reviewed the recently completed auditor's report and the findings which reflected excellent accounting procedures on the part of Budget and Finance Director Shirley Frazier. Additionally, he reviewed with the Committee the 25-year land and building lease from the ABC Unified School District which expired in January of 1990, and which is currently being negotiated by representatives of the CIF and the ABC District.

8. STATE REPORT — Dr. Robert Packer, State CIF President, updated the Committee on the finalization of the Reebok contract which has been renewed for the next three years. Additionally, he reported on the State Federated Council meeting held in Palm Springs on October 19-20, where the State Federated Council passed guidelines for sportsmanship, rules with regard to physical assault on game officials, and a recommendation to the National Federation for two weight divisions in wrestling which was tabled until the proposal could be reviewed by the State Wrestling Committee. Other items reviewed by Dr. Packer were

see EXECUTIVE COMMITTEE page 12

California Interscholastic Federation Southern Section

11011 Artesia Blvd. (90701) — P.O. Box 488 (90702)

Cerritos, California

(213) 860-2414 — (714) 826-5390 — FAX (213) 860-1692

OFFICERS

Dr. Tom Jacobson, Principal,
Corona del Mar High School, President

Dr. Robert M. Packer, Superintendent,
Duarte Unified, Past-President

Dr. Gary Smidderks, Superintendent-Principal,
Los Angeles Baptist High School, President-Elect

Mr. Ken Gunn, Principal,
Walnut High School, Treasurer

Mr. Stan Thomas, Commissioner of Athletics

BULLETIN EDITOR

Mr. Scott Cathcart
CIF-SS Director of Media and Public Relations

Bulletin Published Six Times Yearly
By CIF-Southern Section

CORPORATE

WILSON, JACK-IN-THE-BOX CONTINUE SUPPORT

The California Interscholastic Federation, Southern Section is pleased to announce the continuance of its long-time association with the Wilson Sporting Goods Company and Jack-In-The-Box Restaurants, as loyal corporate sponsors.

Wilson, which provides the official ball of CIF Southern Section championship events in the sports of football, basketball and tennis, has been a corporate sponsor of the organization since 1983. Throughout its association with the CIF-SS, Wilson has presented each championship finalist with complementary balls in the aforementioned sports.

"Wilson's sponsorship of high school athletics began in the CIF Southern Section and has led to a current involvement in 10 state programs," said Roger Gunderson, Vice President — Team Sports Marketing at Wilson. "Wilson is proud of its service to the Southern Section member schools and appreciates their continued support of Wilson sports equipment."

Jack-In-The-Box, the official fast-food restaurant of the CIF Southern Section, has shown its commitment to interscholastic athletics through a CIF Southern Section sponsorship that began in 1987. Since the beginning of its sponsorship, Jack-In-The-Box has provided the CIF-SS with the opportunity to print discount coupons redeemable for selected food products on championship-event ticket backs. "Jack-In-The-Box believes in supporting

our most valuable customer: the youth of Southern California," points out Richard J. Wenz, Regional Marketing Manager, Jack-In-The-Box. "Our relationship with the Southern Section is a perfect vehicle in our movement to give something back to the schools of the area and their interscholastic athletic programs. We are proud to continue supporting excellence and be of benefit to high school athletic competition."

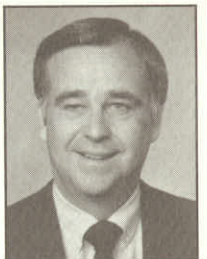
The CIF Southern Section salutes the efforts of Wilson and Jack-In-The-Box in providing useful and necessary support to its diverse and dynamic program of interscholastic athletics.

"Without the continued support of caring sponsors such as Wilson and Jack-In-The-Box, we would be hard-pressed to maintain the quality services and programs that have come to be expected of the CIF Southern Section," says Stan Thomas, CIF-SS Commissioner of Athletics. "In return, I ask that everyone associated with the CIF Southern Section to patronize these fine organizations whenever possible."

Wilson and Jack-In-The-Box are joined on the CIF Southern Section Corporate Team by official state-wide sponsors Reebok and Pepsi-Cola, the California Angels, Conlin Brothers Sporting Goods, the Ford Motor Company, Gatorade Thirst Quencher, the Herff Jones Company, SportsChannel of Los Angeles and Sunny Delight Citrus Punch.

RULE REVIEW

CONTINUATION TRANSFER; PRACTICE PARTICIPATION



By Dean Crowley
Associate Commissioner

From time to time, administrators at the CIF Southern Section Office are queried by administrators, coaches and/or parents for interpretations on specific Blue Book rules, which at times, may cause confusion due to their uniqueness.

Two subjects of recent concern are continuation-school transfer and participation in school-based practice sessions.

It is hopeful that a column such as this, although brief in terms of length, can provide a concise format of rule reference for administrators and coaches of our member schools. It may also bring attention to a potential violation that otherwise, might not be noticeable.

QUESTION: What is the eligibility status of a student who is enrolled at a continuation school and/or transfer from the same?

ANSWER: Initially, a student when enrolled at a continuation school is only eligible to represent the continuation school. In the event the continuation school does not field teams, the student may not compete and/or practice with his or her original school of attendance. This interpretation is in concert with State and Southern Section Rule 222.

If at some juncture, the student returns to his or her original school of attendance (transfers back from the continuation school) the student would be immediately eligible, provided said student meets the criteria as so noted under Rule 223, pertaining to scholastic, attendance and semesters of eligibility. If the same student transfers from the continuation school to a school other than the original school of attendance, the student would fall under the ordinance of Rule 214 and would have restricted/unrestricted eligibility based upon his or her sports participation in the previous 12-month period.

QUESTION: Who may take part in the practice sessions for the various teams representing a CIF-SS member school?

ANSWER: Principals should be aware

see RULE REVIEW page 5

STATE ADOPTS VIOLENCE RULE

Violence at athletic contests has become an issue which seriously affects CIF sports and impacts our schools and school districts.

We wish to advise you that the State CIF Federated Council, at its October meeting, passed new physical assault language for inclusion in the CIF Constitution and By-Laws.

The new language bans students, who have physically assaulted the person of a game or event official, from further participation in interscholastic athletics.

The action taken by the Federated Council is for immediate implementation and the exact wording of the By-Law is reprinted below:

New Article 5 - By-Law 522

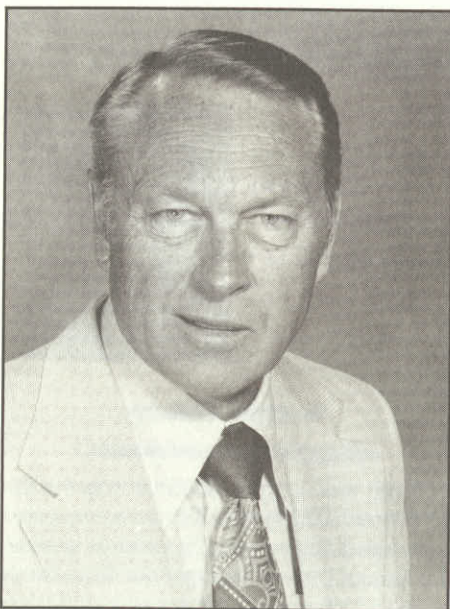
"Any student who physically assaults the person of a game or event official shall be banned from interscholastic athletics for the remainder of the student's eligibility. A game or event official is defined as a referee, umpire

or any other official assigned to interpret or enforce rules of competition at an event or contest. A student may, after a lapse of 18 calendar months from the date of the incident, apply for reinstatement of eligibility to the State Commissioner."

An interpretation of the rule, as prepared by CIF Legal Council Andrew Patterson, follows:

A "physical assault" as used in rule 522 is the intentional infliction of, or an attempt to inflict a harmful or offensive touching or contact upon the person of an official. Note that the rule is violated even if no contact is made with the person of the official. All that is required is the "attempt." However, the act constituting the attempt must be accompanied by a specific intent, which may be inferred from the circumstances and nature of the act, to inflict a harmful or offensive touching contact of the official's person.

CIF-SS MOURNS PASSING OF LES BILLINGER



Les Billinger

The CIF Southern Section Office was saddened this past November with the sudden illness and passing of Les Billinger, who served for the past three years as the CIF-SS Long Beach-Whittier area officials' liaison.

Billinger, 69, was an educator, administrator and sports official, who served the Norwalk-La Mirada School District for 36 years. He was active in CIF Southern Section activities throughout his long career and in 1989, was bestowed with the organization's highest honor, the Gold Life Pass.

During the past two years, Billinger worked closely with Commissioner Stan Thomas and the Amateur Athletic Foundation of Los Angeles in helping to conduct a training program for coaches entitled "A Partnership for Coaching Education."

In reflecting on Billinger's contributions to education and athletics, Thomas re-

marked, "Les was a tremendous asset and a valuable man, for his background lent itself to his work. He was a teacher, coach, athletic director and principal, and understood the educational process and its many ramifications."

A graduate of Long Beach Poly High School, Billinger served in the Navy in World War II and advanced to the rank of machinist's mate. After returning home, he continued his education at UC Santa Barbara, where he earned his bachelor's degree, and at USC, where he completed his master's degree. His 20-year career as a football official was highlighted by working the Junior Rose Bowl Game in Pasadena.

He is survived by his wife of 41 years, Pat; two sons, Bob of La Mirada and Jon of Seal Beach, both of whom are active CIF-SS contest officials; and a brother, Donald of Truckee.

THE SCHOOL PRINCIPAL'S RESPONSIBILITY FOR CROWD CONTROL AND SPORTSMANSHIP

The following information, second in a series devoted to a section-wide improvement in the areas of contest safety and sportsmanship, points out that the principal's role in establishing positive and workable procedures for the development of sportsmanship and crowd control cannot be overemphasized.

"The principal of the home school is ultimately responsible for the conduct of the spectators and the proper police protection, as well as being accountable to the superintendent of schools, the state and section commissioners of athletics and the community at large, for what transpires at all athletic contests."

The principal and other staff members should constantly strive to encourage self-control at games and to teach good sportsmanship to students. The school athletic director and the principal should work closely in these areas.

Specifically, the principal or principal's representative should:

- Attend every interscholastic athletic contest, at home or away.
- Be seated in a conspicuous place so that lines of communication can be kept open in case of emergency and so that students are well aware of the principal in attendance.
- Know the location of all persons concerned with crowd control. These persons should know where the principal or principal's representative is seated at all times during the contest.
- Be prepared to take over the public address system to give preplanned instructions in case of extreme emergency such as a bomb scare, fire, or similar situation.

CALENDAR ADJUSTED FOR 1991-92

Administrators and coaches of CIF Southern Section member schools will note in the recently-released sports calendar for the 1991-92 school year, that all dates have been moved back by a full week, in comparison to the current calendar.

For example, where the opening date for the 1990 football season was September 6, it has been set for September 12 next fall. Whereas the date for the first allowable contest in basketball and soccer was November 28 this year, it will be December 2 in 1991. And, as the season openers in baseball and softball will take place on March 1 this year, the 1992 date is set back to March 6. Accordingly, ending dates for each season of sport will be a week later as well.

Why the adjustment? One reason is to remain on track with the national calendar, on which, for instance, Thanksgiving moves from November 21 in 1990, to November 27 in 1991.

The adjustment will primarily maintain a long-term consistency for year to year scheduling. If starting and ending-date schedules are not adjusted accordingly every fourth or fifth year, the seasons of sport would eventually wind up outside the school calendar. The adjustment will ensure maintenance of a consistent progression of the seasons of sport and the ensuing playoffs and championship events. The adjusted calendar will also keep the Southern Section in line with CIF State post-season competition.

CIF-SS ATHLETIC ADMINISTRATORS' SYMPOSIUM

"BUILDING A FUTURE FOR THE '90s"

(Continued from page 1)

behavior and the dynamics of suggestion.

The program will provide a tremendous source of information, ideas and direction for personnel of CIF Southern Section member schools, or anyone involved in the administration of interscholastic athletics. The Symposium will also include a large gathering of vendors, who will be on hand to display the latest innovations in athletic goods and fund-raising products for high school athletic programs.

For a first time ever, the Symposium will also include a special workshop exclusively for member-school athletic secretaries, provided to share ideas and a working knowledge about the day-to-day operation of the CIF Southern Section. Topics featured in this two-session presentation will include: communication between member schools and the CIF-SS Office; handling the paper work; deadlines and playoff concerns; distribution of materials and follow-up; financial matters; school organization systems; time management; game-day preparation; and dealing with coaches.

Major breakout-session topics for the event will include: Summer Activities and their Impact on CIF-SS Rules and Regulations; Women in Administration; Walk-on Coach Legislation; Sports and the Courts — Issues Facing Athletics in the '90s; In-servicing the School Coaching Staff; Deal-

COMMISSIONER'S CORNER

(Continued from page 2)

champion Whittier Christian — completed undefeated seasons.

What does it prove? Just this: In our playoff system, all participants, regardless of their regular-season performance or the draw they receive, have an equal chance to win. And that the measure of excellence is determined in the playing of the games, not by pre-conceived notions, rankings or potential.

As a former football coach, I can tell you that Loyola, the Division I champion, was not the most formidable team in our section this year. Coach Steve Grady's Cubs weren't anywhere near the biggest, fastest or most talented club. But when the championship was on the line, they just seemed to want it more than anyone else. And isn't that a prime example of what we are trying to teach our youngsters through athletics? That dedication, desire and perseverance can produce the ultimate measure of excellence, even when the odds are not in our favor.

If only league champions were invited to the playoffs, there would have been no such story, no such glory. Much can be said in

ing with Violence in High School Athletics; Effective Use of the Media; CIF-SS Eligibility; Problems Facing the "Blue-Chip" Female Athlete; NCAA Guidelines for the College-Bound Student Athlete; Creating New Attitudes for Sportsmanship; Alcohol, Drug and Steroid Abuse; Game Management and Crowd Control.

An informational brochure on the 1990-91 CIF-SS Athletic Administrators' Symposium, including a returnable registration form, has been mailed to each member school in care of the principal. The registration fee is \$15 per person. If three (3) or more staff members from any one school sign up, the school athletic secretary may attend free of charge.

For further information on this most informative and worthwhile event, please contact the CIF Southern Section Office at (213) 860-2414 or (714) 826-5390.



Bill Wolfe — "Stress Management"

SYMPOSIUM SCHEDULE

"Building a Future for the '90s"

7:30 a.m. - 8:15 a.m.	Registration/Vendors
8:15 a.m. - 8:25 a.m.	Opening Remarks/Introductions
8:25 a.m. - 9:15 a.m.	Opening Keynote Speaker: Bill Wolfe
9:15 a.m. - 9:35 a.m.	Break/Vendors
9:35 a.m. - 10:15 a.m.	Workshop Session I
10:20 a.m. - 11:10 a.m.	Workshop Session II
11:20 a.m. - 12:10 p.m.	Featured Speaker: Billy Mills

support of maximum post-season participation. Its what our member-schools have collectively endorsed and what our office staff has devoted long working hours to carry out. It provides a broadened horizon of worthwhile and attainable goals for the member-school student athletes and coaches we are here to serve.

It is also important to remember that the membership of the CIF Southern Section represents an extremely broad spectrum of high schools and high school athletic programs. The organization is composed of nearly 500 member schools, encompassing an estimated student population in excess of 250,000 and with a sweeping geographic expanse from the Mexican border to the High Sierra. Within those boundaries are public, private and parochial schools of every conceivable size, age and socioeconomic structure.

Bringing them together for championship athletic competition, as voluntary members of a Democratic organization based upon the concept of self-governance, is a challenge of major complexity. The development of equitable competition to best serve the membership — large, small and medium-sized schools alike — requires a large and diverse system of playoff grouping.

Once again, I commend all of this year's post-season participants in the fall sports, the complete results of which can be found within the pages of this publication. In closing, my best wishes to all teams, coaches and student-athletes currently involved in the winter-sport activities.

RULE REVIEW

(Continued from page 3)

of State and Southern Section Rule 305, which specifically states that only students enrolled in grades 9-12 at a particular school may practice with or compete on the school team. Thus, it would be a violation if an alumnus or others not currently enrolled in the school were to take part in a practice situation. However, the lone exception would be the one allowable alumni contest, which is provided for in the respective sport sections of the Blue Book.

Additionally, alumnus may serve in the capacity of demonstrating a specific aspect of a contest in a practice session, but are prohibited from taking part in scrimmage situations as noted above. The CIF Southern Section administration stresses this rule based upon the aspect of school and personal liability.

SOUTHERN SECTION CIF/REEBOK 1990 FOOTBALL PLAYOFF RESULTS

DIVISION I

FIRST ROUND:

Eisenhower 27
Ocean View 7
Mater Dei 58
L.B. Poly 31
Quartz Hill 49
L.B. Wilson 14
Rubidoux 44
Edison 19
Fontana 56
Palmdale 6
Loyola 42
Jordan 14
Canyon/C.C. 40
Westminster 0
Bishop Amat 31
Lakewood 13

QUARTERFINALS:

Mater Dei 34
Eisenhower 20
Quartz Hill 24
Rubidoux 14
Loyola 10
Fontana 7
Canyon/C.C. 21
Bishop Amat 20

SEMIFINALS:

Quartz Hill 37
Mater Dei 7
Loyola 10
Canyon/C.C. 3

FINALS:

Loyola 24
Quartz Hill 14

DIVISION II

FIRST ROUND:

Paramount 27
Rio Mesa 7
Muir 52
Westlake 13
Lynwood 31
Thousand Oaks 27
El Toro 40
Buena 12
Camarillo 33
Glendale 8
Capistrano Valley 59
Ventura 30
Downey 17
Royal 10
Mission Viejo 56
Arcadia 16

QUARTERFINALS:

Paramount 35
Muir 13
El Toro 27
Lynwood 7
Capistrano Valley 38
Camarillo 14
Mission Viejo 35
Downey 12

SEMIFINALS:

Paramount 19
El Toro 8
Capistrano Valley 26
Mission Viejo 24

FINALS:

Capistrano Valley 17
Paramount 15

DIVISION III

FIRST ROUND:

Esperanza 47
Alhambra 0
Leuzinger 20
Crespi 14
El Modena 31
Culver City 0
Hart 13
Los Alamitos 10
Hawthorne 28
Notre Dame/S.O. 21
Loara 26
Villa Park 14
St. Paul 21
Orange 8
Beverly Hills 29
Schurr 28

QUARTERFINALS:

Esperanza 31
Leuzinger 7
Hart 14
El Modena 7
Hawthorne 17
Loara 9
St. Paul 42
Beverly Hills 7

SEMIFINALS:

Esperanza 38
Hart 35
St. Paul 31
Hawthorne 0

FINALS:

Esperanza 25
St. Paul 7

DIVISION IV

FIRST ROUND:

Canyon Springs 22
Chino 20
Baldwin Park 41
California 13
Bell Gardens 3
Walnut 0
Santa Margarita 17
Claremont 14
Glendora 31
Rowland 15
J.W. North 41
Northview 29
Arlington 35
El Rancho 7
Nogales 19
Covina 0

QUARTERFINALS:

Baldwin Park 21
Canyon Springs 7
Santa Margarita 24
Bell Gardens 14
Glendora 40
J.W. North 12
Arlington 14
Nogales 7

SEMIFINALS:

Baldwin Park 13
Santa Margarita 7
Arlington 17
Glendora 10

FINALS:

Arlington 10
Baldwin Park 6

DIVISION V

FIRST ROUND:

Etiwanda 35
Corona 7
Duarte 25
Hesperia 19
Elsinore 20
San Bernardino 13
Montclair 1
Central 0*
Cajon 40
Arroyo 9
Norco 14
Brawley 0
Palm Desert 28
Ganesha 15
Rosemead 34
Apple Valley 15

QUARTERFINALS:

Etiwanda 30
Duarte 0
Elsinore 1
Central 0*
Norco 25
Cajon 23
Palm Desert 20
Rosemead 13

SEMIFINALS:

Etiwanda 1
Central 0*
Norco 36
Palm Desert 28

FINALS:

Etiwanda 14
Norco 12
*Loss by forfeit

DIVISION VI

FIRST ROUND:

Tustin 34
Bassett 0
Pacifica 24
Fullerton 20
Rancho Alamitos 32
Pomona 0
Brea-Olinda 24
Corona del Mar 17
Sunny Hills 28
Savanna 20
Newport Harbor 27
San Dimas 20
Valencia 34
Sierra Vista 9
La Quinta 25
Buena Park 22

QUARTERFINALS:

Tustin 44
Pacifica 14
Rancho Alamitos 14
Brea-Olinda 9
Sunny Hills 27
Newport Harbor 7
Valencia 42
La Quinta 15

SEMIFINALS:

Tustin 26
Rancho Alamitos 6
Sunny Hills 23
Valencia 10

FINALS:

Sunny Hills 7
Tustin 3

DIVISION VII

FIRST ROUND:

Serra 34
Trabuco Hills 21
La Mirada 21
Harvard 14
Temple City 25
Norwalk 0
Arroyo Grande 40
Costa Mesa 0
Lompoc 42
Blair 28
Glenn 40
St. Francis 19
Laguna Hills 21
St. Monica 17
San Marino 21
El Segundo 6

QUARTERFINALS:

Serra 34
La Mirada 6
Arroyo Grande 15
Temple City 12
Lompoc 51
Glenn 6
San Marino 32
Laguna Hills 20

SEMIFINALS:

Arroyo Grande 31
Serra 0
Lompoc 28
San Marino 14

FINALS:

Lompoc 12
Arroyo Grande 7

DIVISION VIII

FIRST ROUND:

Cabrillo 38
Santa Clara 0
Mira Costa 28
Yucaipa 6
Bloomington 17
South Torrance 0
Palos Verdes 45
Santa Paula 18
Temecula Valley 39
Rolling Hills 28
West Torrance 13
Paso Robles 10
Torrance 23
Fillmore 15
Morningside 20
Atascadero 13

QUARTERFINALS:

Cabrillo 14
Mira Costa 10
Palos Verdes 21
Bloomington 7
Temecula Valley 31
West Torrance 17
Morningside 32
Torrance 14

SEMIFINALS:

Palos Verdes 21
Cabrillo 7
Temecula Valley 27
Morningside 9

FINALS:

Temecula Valley 29
Palos Verdes 7

DIVISION IX

FIRST ROUND:

Whittier Christian 52
San Jacinto 6
Desert 42
Mary Star 21
Valley Christian/C. 17
Carpinteria 14
Bishop 34
Big Bear 15
Beaumont 34
Brethren Christian 7
Oak Park 42
Salesian 20
Orange Lutheran 27
Cantwell 14
Tehachapi 48
Moorpark 6

QUARTERFINALS:

Whittier Christian 61
Desert 28
Valley Christian/C. 24
Bishop 6
Beaumont 34
Oak Park 7
Tehachapi 27
Orange Lutheran 7

SEMIFINALS:

Whittier Christian 26
Valley Christian/C. 15
Tehachapi 27
Beaumont 21

FINALS:

Whittier Christian 34
Tehachapi 21

DIVISION X

FIRST ROUND:

Montclair Prep
Bye
St. John's 22
So. Cal Christian 16
Village Christian 27
Silver Valley 8
Linfield 37
Calvary Chapel/S.A. 0
Mammoth 37
Hamilton 0
Western Christian 27
Capistrano Valley Christian 0
Kilpatrick 32
Rosamond 12
Leffingwell Christian
Bye

QUARTERFINALS:

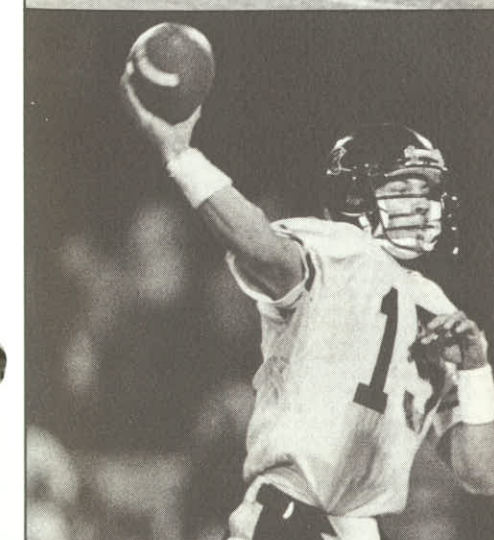
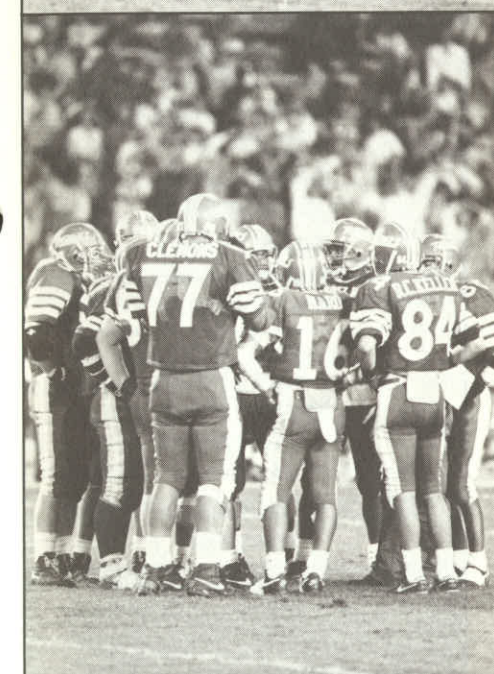
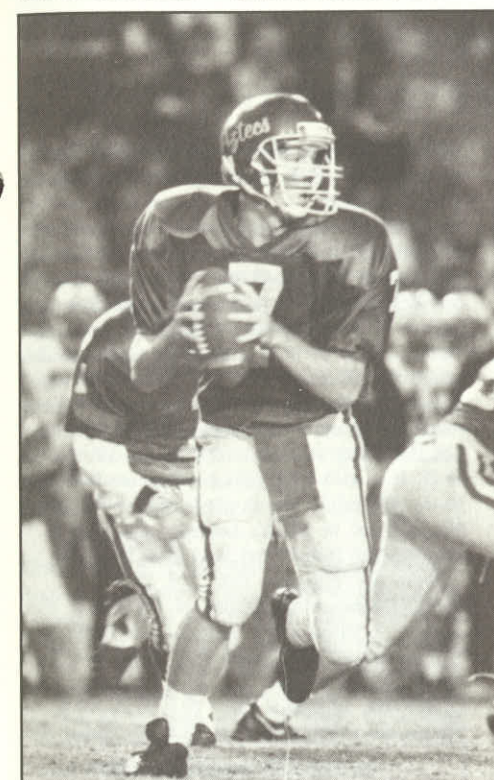
Montclair Prep 42
St. John's 0
Village Christian 20
Linfield 0
Mammoth 28
Western Christian 24
Kilpatrick 34
Leffingwell Christian 17

SEMIFINALS:

Montclair Prep 34
Village Christian 0
Kilpatrick 52
Mammoth 20

FINALS:

Montclair Prep 13
Kilpatrick 7



SOUTHERN SECTION CIF/REEBOK 1990 FOOTBALL CHAMPIONS

DIVISION I
Loyola

DIVISION II
Capistrano Valley

DIVISION III
Esperanza

DIVISION IV
Arlington

DIVISION V
Etiwanda

DIVISION VI
Sunny Hills

DIVISION VII
Lompoc

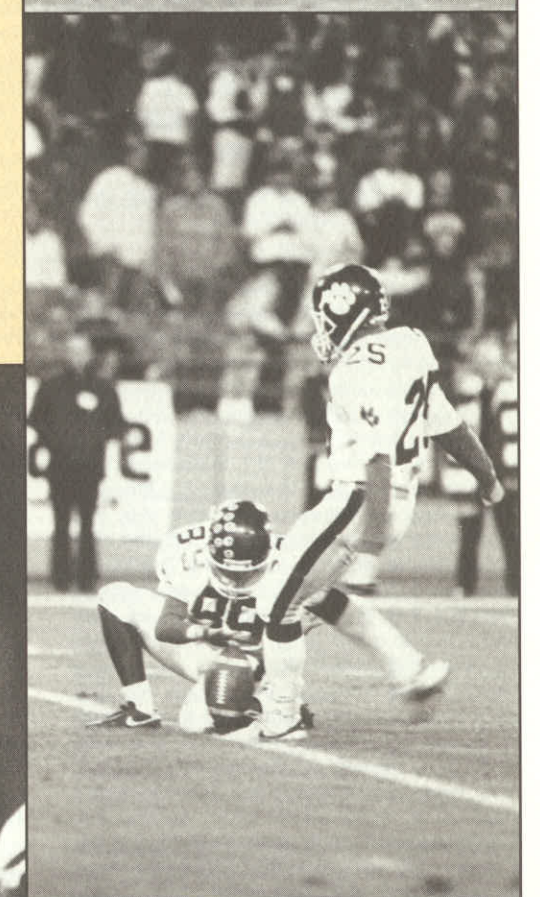
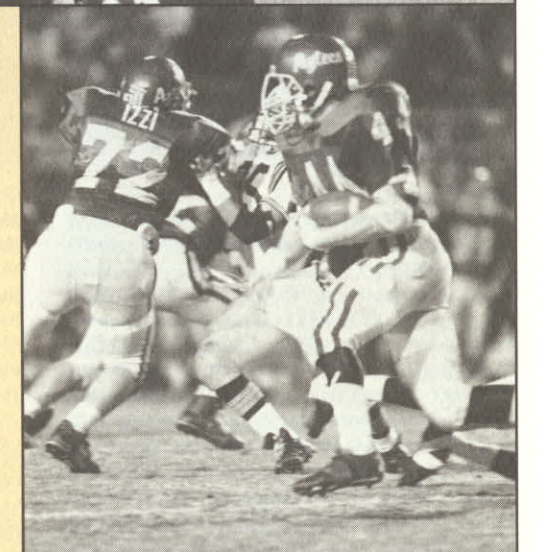
DIVISION VIII
Temecula Valley

DIVISION IX
Whittier Christian

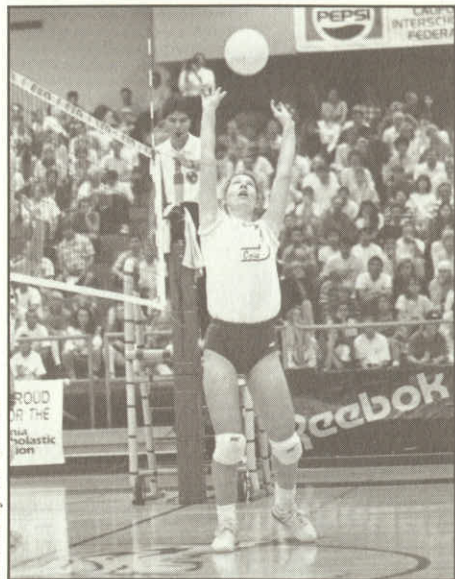
DIVISION X
Montclair Prep

EIGHT-MAN LARGE
Rio Hondo Prep

EIGHT-MAN SMALL
Antelope Valley Christian



SOUTHERN SECTION CIF/REEBOK 1990 GIRLS VOLLEYBALL PLAYOFF RESULTS



Photos by Al Martin

5-A DIVISION

Wild Card: Estancia def. Redondo 15-0, 15-0, 15-11; Santa Barbara def. Newbury Park 15-2, 15-8, 15-12; Rolling Hills def. Costa Mesa 15-11, 15-3, 15-13; Dana Hills def. Mater Dei 17-15, 15-13, 16-14; Santa Margarita def. Tustin 15-13, 15-4, 15-11.

First Round: Corona del Mar def. Estancia 15-1, 15-3, 15-5; Royal def. Buena 15-1, 16-14, 15-13; St. Joseph/Lkwd. def. Santa Barbara 15-2, 13-15, 15-7, 15-3; Capistrano Valley def. Rolling Hills 15-7, 15-9, 15-9; Laguna Beach def. Dana Hills 15-2, 15-13, 15-4; Mira Costa def. Newport Harbor 15-14, 15-5, 15-13; Thousand Oaks def. Dos Pueblos 17-15, 15-8, 15-4; El Toro def. Santa Margarita 15-10, 14-16, 15-6, 15-10.

Quarterfinals: Corona del Mar def. Royal 15-8, 15-9, 15-8; St. Joseph/Lkwd. def. Capistrano Valley 7-15, 15-6, 16-14, 11-15, 15-12; Mira Costa def. Laguna Beach 15-12, 2-15, 15-4, 15-9; El Toro def. Thousand Oaks 12-15, 15-5, 15-7, 15-10.

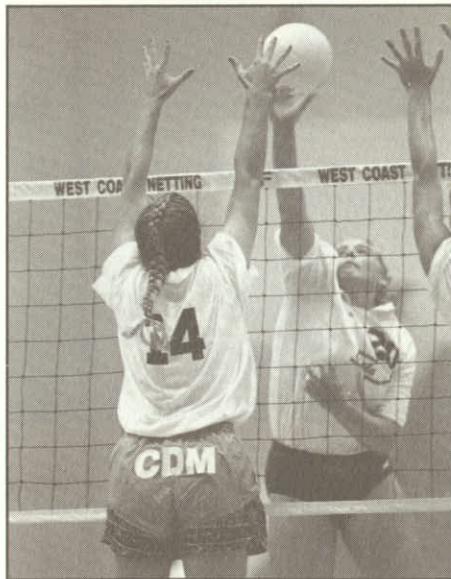
Semifinals: Corona del Mar def. St. Joseph/Lkwd 15-3, 15-13, 13-15, 15-11; Mira Costa def. El Toro 16-14, 13-15, 10-15, 15-8, 15-6.

Finals: Corona del Mar def. Mira Costa 15-12, 15-9, 15-8.

4-A DIVISION

First Round: Jordan def. Huntington Beach 15-5, 15-1, 15-11; Burroughs/B def. Chinade 15-2, 15-7, 2-15, 15-11, 15-5; Esperanza def. Edison 15-12, 15-11, 15-8; Marymount def. Bishop Montgomery 15-10, 9-15, 15-9, 15-13; Fountain Valley def. Los Alamitos 15-5, 8-15, 15-6, 15-5; Gahr def. Pasadena 15-7, 15-5, 15-6; Beverly Hills def. Bell-Jeff 15-9, 11-15, 16-14, 4-15, 15-10; Glendale def. Cerritos 15-5, 15-7, 16-14; Notre Dame Academy def. Leuzinger 15-2, 15-6, 15-1; Flintridge Sacred Heart def. Alhambra 11-15, 15-9, 15-3, 15-7; Marlborough def. Santa Monica 15-12, 9-15, 15-8, 15-1; Arcadia def. San Gabriel 15-9, 8-15, 15-9, 15-9; Marina def. Downey 15-8, 15-8, 15-8; Cypress def. Poly/L.B. 15-8, 15-5, 9-15, 15-17, 15-9; Wilson/L.B. def. Paramount 15-7, 15-6, 9-15, 15-13; Notre Dame/S.O. def. Louisville 15-6, 15-6, 15-11.

Second Round: Jordan def. Burroughs/B. 9-15, 15-9, 15-8; Marymount def. Esperanza 15-6, 15-4, 14-16, 15-13; Gahr def. Fountain Valley 15-11, 15-8, 14-16, 12-15, 15-13; Glendale def. Beverly Hills 15-2, 15-8, 15-6; Notre Dame Academy def. Flintridge Sacred Heart 15-11, 11-15, 15-17, 15-0; Arcadia def. Marlborough 9-15, 18-16, 16-14, 16-14; Marina def. Cypress 15-10, 15-5, 15-3; Wilson/L.B. def. Notre Dame/S.O. 11-15, 15-2, 15-12, 16-14.



Quarterfinals: Jordan def. Marymount 12-15, 15-4, 15-10, 15-11; Gahr def. Glendale 15-7, 15-13, 10-15, 15-6; Notre Dame Academy def. Arcadia 15-10, 15-5, 15-10; Wilson/L.B. def. Marina 9-15, 15-7, 15-9, 9-15, 15-8.

Semifinals: Jordan def. Gahr 15-7, 12-15, 15-10, 15-10; Notre Dame Academy def. Wilson/L.B. 15-6, 15-4, 15-6.

3-A DIVISION

Wild Card: Foothill def. Santiago 15-3, 15-5, 16-14; Palm Springs def. California 15-7, 15-6, 15-9; Temecula Valley def. San Geronio 15-3, 15-11, 4-15, 15-9; Temple City def. West Covina 15-9, 15-8, 15-7.

First Round: La Habra def. Foothill 15-0, 15-5, 15-1; Torrance def. La Serna 10-15, 15-10, 15-11, 11-15, 16-14; Notre Dame/R. def. Fontana 15-9, 15-4, 15-6; Canyon Springs def. Burroughs/R. 15-9, 14-16, 15-10, 15-8; Wilson/H.H. def. San Marino 9-15, 8-15, 15-6, 15-13, 15-12; Canyon/C.C. def. North Torrance 15-12, 15-12, 8-15, 15-5; La Quinta def. Canyon/A. 15-12, 15-10, 5-15, 16-18, 15-4; Alta Loma def. Palm Springs 15-13, 15-1, 11-15, 15-4; El Modena def. Temecula Valley 15-11, 15-1, 15-3; South Torrance def. Sonora 15-11, 15-5, 15-8; Temple City def. Pacifica 15-8, 11-15, 15-10, 18-16; Sunny Hills def. Whittier 15-8, 15-4, 15-7; Los Altos def. Upland 15-14, 12-15, 15-6, 15-5; Saugus def. South Pasadena 15-6, 12-15, 15-10, 8-15, 15-7; Arlington def. Redlands 15-4, 15-9, 15-6; Rim of the World def. St. Lucy's 15-7, 15-6, 15-4.

Second Round: La Habra def. Torrance 15-11, 15-6, 15-8; Notre Dame/R. def. Canyon Springs 4-15, 13-15, 15-4, 15-10, 15-5; Canyon/C.C. def. Wilson/H.H. 2-15, 15-12, 3-15, 15-7; Alta Loma def. La Quinta 5-15, 15-4, 15-2, 15-5; El Modena def. South Torrance 9-15, 15-9, 13-15, 15-3, 15-4; Sunny Hills def. Temple City 15-10, 15-8, 15-13; Los Altos def. Saugus 15-6, 15-6, 15-7; Arlington def. Rim of the World 14-16, 15-11, 6-15, 16-14, 17-15.

Quarterfinals: La Habra def. Notre Dame/R. 15-1, 15-3, 15-10; Alta Loma def. Canyon/C.C. 15-7, 15-13, 15-6; El Modena def. Sunny Hills 16-14, 10-15, 16-14, 15-4; Arlington def. Los Altos 15-7, 11-15, 14-16, 15-5, 15-4.

Semifinals: La Habra def. Alta Loma 15-6, 15-6, 15-3; El Modena def. Arlington 15-12, 15-10, 16-14.

Finals: La Habra def. El Modena 15-7, 15-1, 15-12.

2-A DIVISION

Wild Card: Santa Ynez def. Santa Maria 16-14, 15-10, 15-12; Centennial def. Pomona Catholic 15-3, 9-15,

9-15, 15-10, 15-4; St. Mary's Academy def. Bellflower 17-15, 4-15, 15-3, 4-15, 15-11; Magnolia def. Rosemead 15-9, 15-9, 15-11.

First Round: Arroyo Grande def. Santa Paula 15-3, 15-1, 15-2; Glenn def. Pius X 15-6, 15-7, 15-2; Ganesha def. Brawley 14-16, 11-15, 15-11, 15-4, 15-9; Valencia def. Hesperia 15-2, 15-13, 14-10; Moorpark def. Santa Ynez 16-14, 15-8, 14-16, 15-10; Colton def. Apple Valley 6-15, 15-11, 15-13, 8-15, 15-12; Calabasas def. Arroyo 6-15, 11-15, 15-5, 16-14, 15-1; Paso Robles def. Oak Park 15-10, 15-2, 15-7; San Luis Obispo def. La Reina 15-5, 15-8, 15-8; Mountain View def. Centennial 15-6, 12-15, 9-15, 15-4, 15-10; Cajon def. Central 15-12, 15-4, 15-7; La Mirada def. Elsinore 15-7, 15-8, 16-14; Atascadero def. Anaheim 15-5, 15-2, 15-2; Nordhoff def. St. Mary's Academy 15-3, 15-6, 15-3; Etiwanda def. Palm Desert 14-16, 15-4, 15-6, 15-6; St. Anthony def. Magnolia 15-6, 15-8, 15-3.

Second Round: Arroyo Grande def. Glenn 15-17, 15-5, 15-10, 15-2; Valencia def. Ganesha 15-4, 15-10, 11-15, 15-2; Moorpark def. Colton 18-16, 15-9, 15-4; Paso Robles def. Calabasas 15-1, 15-5, 15-8; San Luis Obispo def. Mountain View 15-1, 15-11, 15-11; La Mirada def. Cajon 15-4, 15-11, 15-8; Atascadero def.

see VOLLEYBALL PLAYOFFS page 9

SOUTHERN SECTION CIF/REEBOK 1990 GIRLS VOLLEYBALL CHAMPIONS

5-A DIVISION Corona del Mar

4-A DIVISION Notre Dame Academy

3-A DIVISION La Habra

2-A DIVISION Arroyo Grande

1-A DIVISION Windward SMALL SCHOOLS DIVISION Mammoth

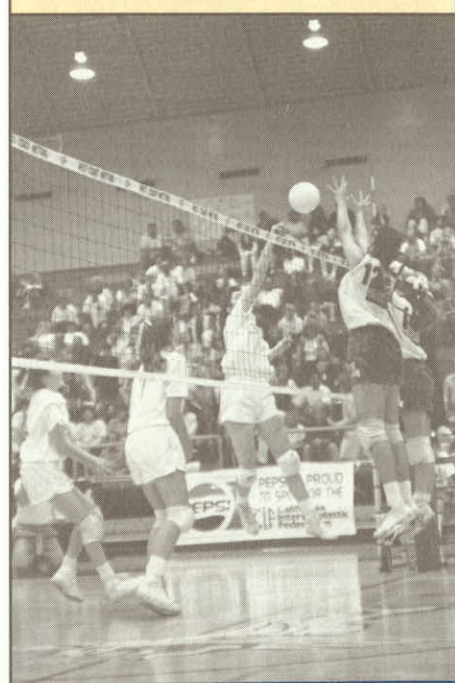


Photo by Al Martin

SOUTHERN SECTION CIF/REEBOK 1990 WATER POLO PLAYOFF RESULTS



Photo by Leo Hetzel, Long Beach Press-Telegram

4-A DIVISION

Wild Card: Santa Ana Valley 9, Sonora 7; Corona del Mar 19, Esperanza 6.

First Round: El Dorado, 15, Millikan 3; El Toro 17, Buena Park 8; Capistrano Valley 8, Villa Park 3; Newport Harbor 14, Long Beach Poly 3; Long Beach Wilson 11, Santa Ana Valley 7; University 20, Los Alamitos 10; San Clemente 18, Canyon/A. 10; Corona del Mar 10, Sunny Hills 2.

Quarterfinals: El Toro 11, El Dorado 10; Capistrano Valley 6, Newport Harbor 1; Long Beach Wilson 11, University 8; Corona del Mar 9, San Clemente 8.

Semifinals: El Toro 3, Capistrano Valley 2; Long Beach Wilson 8, Corona del Mar 4.

Finals: El Toro 11, Long Beach Wilson 9.

3-A DIVISION

First Round: Riverside Poly 15, Whittier 1; Indio 13, Hoover 12; Agoura 13, Montebello 11; Rowland 14, Downey 4; Crespi 22, Thousand Oaks 3; Edison 11, El Rancho 4; Glendale 11, Servite 10; Miraleste 23, Warren 12; La Serna 23, Charter Oak 5; San Geronio 12, Palm Springs 9; Loyola 10, Santa Monica 9; Harvard 10, Fountain Valley 6; Royal 13, St. John

SOUTHERN SECTION CIF/REEBOK 1990 WATER POLO CHAMPIONS

4-A DIVISION El Toro

3-A DIVISION Riverside Poly

2-A DIVISION South Pasadena

VOLLEYBALL PLAYOFFS

(Continued from page 8)

Nordhoff 15-13, 10-15, 13-15, 15-8, 15-11; St. Anthony def. Etiwanda 15-7, 15-2, 15-12.

Quarterfinals: Arroyo Grande def. Valencia 15-2, 15-3, 15-6; Paso Robles def. Moorpark 10-15, 15-6, 15-11, 15-10; La Mirada def. San Luis Obispo 12-15, 15-12, 9-15, 15-12, 15-12; St. Anthony def. Atascadero 16-14, 15-12, 15-4.

Semifinals: Arroyo Grande def. Paso Robles 15-2, 15-13, 15-5; St. Anthony def. La Mirada 15-4, 15-8, 11-15, 15-6.

Finals: Arroyo Grande def. St. Anthony 7-15, 17-15, 15-4, 16-14.

1-A DIVISION

First Round: Windward def. Rio Hondo Prep. 14-16, 15-9, 15-8, 15-7; Sierra Vista def. La Puente 15-17, 15-7, 18-16, 9-15, 15-5; South Hills def. Orange Lutheran 15-17, 15-12, 15-8, 11-15, 15-2; L.A. Baptist def. Sacred Heart of Mary 15-2, 15-7, 15-5; Chadwick def. Valley Christian 15-0, 15-4; Paraclete def. Crossroads 15-12, 15-13, 15-11; Big Bear def. Regina Caeli 15-6, 15-5, 15-7; Capistrano Valley Christian def. Bassett 15-1, 15-4, 15-9; Desert def. Providence 15-1, 15-0, 15-6; Beaumont def. St. Matthias 15-3, 15-13, 9-15, 11-15, 15-11; Whittier Christian def. Mojave 15-1, 15-7, 15-2; Flintridge Prep. def. Ramona Convent 9-15, 15-12, 15-10, 15-12; Maranatha def. Twentynine Palms 15-10, 15-6, 15-12, 15-10; Covina def. Gladstone 15-12, 13-15, 15-13, 16-14; Brentwood def. San Gabriel Mission 15-11, 15-2, 15-4.

Second Round: Windward def. Sierra Vista 15-4, 15-3, 15-2; L.A. Baptist def. South Hills 15-12, 15-5, 15-1; Chadwick def. Paraclete 15-8, 15-11, 15-8;

Bosco 4; Muir 22, Arlington 10; Marina 9, Cerritos 8; Wilson/H.H. 18, El Segundo 4.

Second Round: Riverside Poly 10, Indio 6; Agoura 13, Rowland 9; Edison 7, Crespi 6; Miraleste 16, Glendale 8; La Serna 16, San Geronio 5; Harvard 14, Loyola 11; Muir 9, Royal 8; Marina 9, Wilson/H.H. 7.

Quarterfinals: Riverside Poly 8, Agoura 6; Miraleste 12, Edison 11; La Serna 14, Harvard 7; Muir 13, Marina 12.

Semifinals: Riverside Poly 9, Miraleste 6; La Serna 13, Muir 10.

Finals: Riverside Poly 9, La Serna 8.

2-A DIVISION

Wild Card: Webb 16, Jurupa Valley 5; Ventura 12, Righetti 9; Valencia 14, La Quinta 5; Temple City 10, Notre Dame/S.O. 9; Redondo 14, Whitney 11; Magnolia 11, Estancia 8; Don Lugo 10, Bonita 7.

First Round: South Pasadena 17, Webb 7; Claremont

Capistrano Valley Christian def. Big Bear 16-14, 15-2, 15-9; Desert def. Beaumont 15-3, 15-5, 15-8; Village Christian def. Whittier Christian 17-15, 13-15, 15-13, 16-14; Flintridge Prep. def. Maranatha 15-5, 15-11, 5-15, 15-10; Brentwood def. Covina 15-3, 15-9, 15-8.

Quarterfinals: Windward def. L.A. Baptist 15-11, 15-13, 15-8; Capistrano Valley Christian def. Chadwick 15-8, 15-9, 7-15, 15-10; Desert def. Village Christian 5-15, 15-12, 15-0, 15-8; Brentwood def. Flintridge Prep. 15-9, 15-13, 15-6.

Semifinals: Windward def. Capistrano Valley Christian 15-8, 16-14, 15-7; Desert def. Brentwood 15-12, 16-14, 15-9.

Finals: Windward def. Desert 15-11, 15-4, 15-6.

SMALL SCHOOLS DIVISION

Wild Card: La Sierra Academy def. Calvary Chapel/R. 15-7, 15-8, 15-10; Hesperia Christian def. Littlerock 15-4, 15-8, 16-14; Thacher def. Ribet Academy (score N/A); First Lutheran def. Shandon 15-7, 15-4, 15-8; Arrowhead Christian Academy def. Desert Christian 15-5, 15-13, 15-13; Harbor Christian def. Highland Hall 15-8, 15-12, 2-15, 9-15, 15-10; Bloomington Christian def. Big Pine 6-15, 7-15, 15-11, 15-12, 16-14.

First Round: Boron def. La Sierra Academy 15-4, 15-8, 15-10; Hesperia Christian def. Baker 15-8, 15-11, 15-5; Thacher def. Southeast Lutheran 15-11, 15-9, 15-13; Liberty Christian def. Mesrobian 15-7, 15-3, 15-6; Calvary Chapel/S.A. def. First Lutheran 15-9, 15-11, 15-6; Arrowhead Christian Academy def. Hamilton 15-1, 10-15, 15-7, 7-15, 15-3; Cuyama Valley def. Hillcrest Christian 13-15, 15-12, 12-15, 15-10, 15-12; Cate def. Maricopa 15-10, 15-9, 15-13; Coast Union def. Villanova Prep 15-5, 15-7, 15-6; Valley Christian

20, Burbank 5; Chadwick 10, Ventura 6; Palos Verdes 12, Valencia 5; San Bernardino 15, Workman 6; Los Amigos 10, Laguna Hills 9; Santa Barbara 20, Santa Ynez 18; Santa Maria 11, Temple City 5; Dos Pueblos 15, Redondo 8; Alhambra 11, Magnolia 9; Mira Costa 15, Flintridge Prep. 8; Cabrillo 7, Lompoc 6; San Marino 15, Upland 7; Walnut 25, Colton 8; Brea-Olinda 13, Kennedy 6; Costa Mesa 18, Don Lugo 5.

Second Round: South Pasadena 14, Claremont 7; Palos Verdes 14, Chadwick 5; San Bernardino 8, Los Amigos 6; Santa Maria 12, Santa Barbara 8; Dos Pueblos 21, Alhambra 16; Cabrillo 13, Mira Costa 4; San Marino 16, Walnut 7; Costa Mesa 10, Brea 8.

Quarterfinals: South Pasadena 12, Palos Verdes 4; Santa Maria 10, San Bernardino 9 (20T); Dos Pueblos 15, Cabrillo 9; Costa Mesa 15, San Marino 13.

Semifinals: South Pasadena 12, Santa Maria 11; Costa Mesa 14, Dos Pueblos 13.

Finals: South Pasadena 9, Costa Mesa 8.

CONGRATULATIONS CIF/REEBOK STATE VOLLEYBALL CHAMPIONS

DIVISION I Corona del Mar

DIVISION II La Habra

def. Harbor Christian 15-13, 15-6, 15-4; Linfield def. Gethsemane Baptist 15-4, 15-8, 15-3; St. Margaret's def. Pacific Shores 15-8, 15-3, 15-2; Pilgrim def. Lef-fingwell Christian 15-10, 11-15, 12-15, 15-5, 16-14; Southwestern Academy def. Bloomington Christian 15-12, 15-13, 15-14; Inland Christian def. Lee Vining 15-4, 15-6, 15-8; Mammoth def. West L.A. Baptist 15-0, 15-9, 15-6.

Second Round: Boron def. Hesperia Christian 9-15, 15-9, 15-5, 15-9; Liberty Christian def. Thacher 15-8, 11-15, 15-11, 15-3; Arrowhead Christian def. Calvary Chapel/S.A. 15-11, 15-7, 14-16, 15-17, 15-10; Cate def. Cuyama Valley 15-4, 15-4, 16-14; Coast Union def. Valley Christian 15-8, 15-11, 15-3; St. Margaret's def. Linfield 15-7, 6-15, 15-12, 15-1; Pilgrim def. Southwestern Academy 15-8, 15-9, 10-15, 15-8; Mammoth def. Inland Christian 9-15, 15-8, 16-4, 15-5.

Quarterfinals: Boron def. Liberty Christian 15-10, 13-15, 11-15, 15-1, 15-6; Cate def. Arrowhead Christian 15-0, 15-2, 15-2; St. Margaret's def. Coast Union 15-6, 13-15, 15-13, 15-7; Mammoth def. Pilgrim 15-9, 15-5, 15-9.

Semifinals: Cate def. Boron 15-5, 15-6, 15-7; Mammoth def. St. Margaret's 14-16, 15-7, 15-4, 15-3.

Finals: Mammoth def. Cate 15-2, 15-12, 15-12.

SOUTHERN SECTION CIF/REEBOK 1990 CROSS COUNTRY RESULTS



Photos by Al Martin

BOYS DIVISION I

Team - I-AA

1. Saddleback - 41
2. Channel Islands - 68
3. Santa Ana Valley - 71
4. Hoover - 96
5. Long Beach Wilson - 100
6. Fountain Valley - 120

Team - I-A

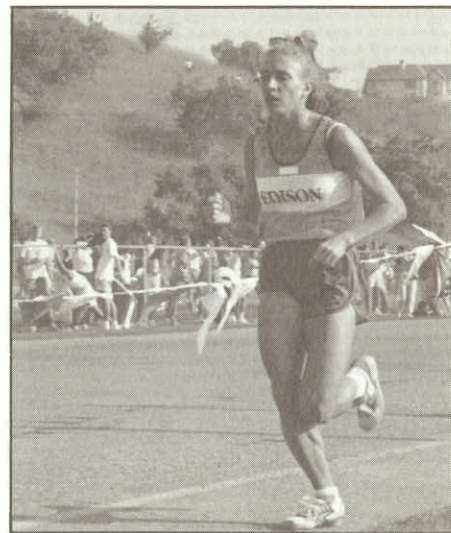
1. Hart - 53
2. El Toro - 68
3. Rowland - 77
4. Dana Hills - 92
5. Arroyo Grande - 93
6. Canyon/Canyon Country - 111

Individual

1. Quintana, Arroyo Grande (14:43)
2. Hartman, Canyon/Canyon Country (15:07)
3. Niednagel, Dana Hills (15:27)
4. Reyes, Lakewood (15:50)
5. Matson, El Toro (15:54)
6. Casillas, Hoover (15:56)
7. Grossman, Hart (16:00)
8. Lovew, Rowland (16:01)

SOUTHERN SECTION CIF/REEBOK 1990 CROSS COUNTRY TEAM CHAMPIONS

BOYS	GIRLS
DIVISION I-AA	
Saddleback	Agoura
DIVISION I-A	
Hart	Arroyo Grande
DIVISION II-AA	
Agoura	Canyon/A.
DIVISION II-A	
La Habra	Westlake
DIVISION III-AA	
Palos Verdes	Foothill
DIVISION III-A	
San Marino	San Marino
DIVISION IV-AA	
Fillmore	Nordhoff
DIVISION IV-A	
Maranatha	Maranatha



9. Dunn, Arroyo Grande (16:04)
10. Mendoza, Channel Island (16:06)

BOYS DIVISION II

Team - II-AA

1. Agoura - 41
2. Camarillo - 45
3. Claremont - 72
4. St. John Bosco - 91
5. Mission Viejo - 108
6. Bishop Amat - 114

Team - II-A

1. La Habra - 60
2. Norte Vista - 67
3. Katella - 68
4. El Modena - 79
5. Woodbridge - 91
6. Villa Park - 107

Individual

1. Tressler, San Marcos (15:32)
2. Pose, Torrance (15:45)
3. Penderhraph, Norte Vista (15:47)
4. Reinisch, Bishop Montgomery (15:54)
5. Mi, Katella (15:55)
6. Cheman, Agoura (15:59)
7. Bean, Norco (16:01)
8. Brusca, Camarillo (16:01)
9. Gerry, Camarillo (16:02)
10. Miller, Westlake (16:05)

BOYS DIVISION III

Team - III-AA

1. Palos Verdes - 25
2. Bosco Tech - 75
3. Laguna Hills - 81
4. Rolling Hills - 101
5. South Torrance - 115
6. Paso Robles - 122

Team - III-A

1. San Marino - 33
2. San Luis Obispo - 64
3. Corona del Mar - 78
4. Moorpark - 94
5. Gladstone - 111
6. South Hills - 128

Individual

1. Menon, San Luis Cbispo (15:14)
2. Wilson, Newbury Park (15:34)
3. DiVirgillo, San Luis Obispo (15:56)
4. Nnichols, San Marino (16:00)
5. Lindsey, Palos Verdes (16:06)
6. Garcia, Northview (16:12)
7. Sanchez, St. Francis (16:13)

8. DeOvando, San Marino (16:16)
9. Elia, Dos Pueblos (16:16)
10. Lopez, Moorpark (16:21)

BOYS DIVISION IV

Team - IV-AA

1. Fillmore - 51
2. Morro Bay - 71
3. St. Anthony - 77
4. Nordhoff - 83
5. Bell-Jeff - 94
6. Salesian - 100

Team - IV-A

1. Maranatha - 22
2. Brentwood - 85
3. Webb - 86
4. Ontario Christian - 96
5. Oak Park - 106
6. Sherman Indian - 115

Individual

1. Castner, Oak Park (15:48)
2. Barajas, Fillmore (15:52)
3. Janquart, St. Anthony (16:02)
4. Fisher, Maranatha (16:04)
5. Faubert, St. Anthony (16:07)
6. Montes, Maranatha (16:13)
7. Hageman, Maranatha (16:30)
8. Armstrong, Ontario Christian (16:38)
9. Hernandez, Fillmore (16:42)
10. Fardin, Crossroads (16:43)

GIRLS DIVISION I

Team - I-AA

1. Agoura - 31
2. Palos Verdes - 64
3. Upland - 84
4. Lakewood - 110
5. Channel Islands - 117
6. Long Beach Wilson - 118

Team - I-A

1. Arroyo Grande - 38
2. Irvine - 50
3. Buena - 81
4. Hart - 98
5. Dana Hills - 102
6. Los Alamitos - 116

Individual

1. Drossin, Agoura (17:23)
2. Barajas, Channel Islands (17:47)

see CROSS COUNTRY RESULTS page 11

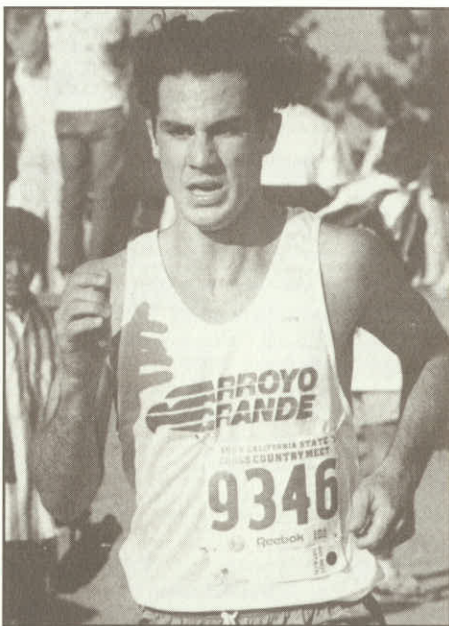


Photo by Eric Burdick, S.L.O. Telegram-Tribune

SOUTHERN SECTION CIF/REEBOK 1990 GIRLS TEAM TENNIS PLAYOFF RESULTS

4-A DIVISION

Wild Card: Woodbridge def. Huntington Beach 13-5; La Canada def. Rio Mesa 14-4.

First Round: Palos Verdes def. Woodbridge 17-1; Santa Barbara def. So. Pasadena 16-2; Miraleste def. Fountain Valley 13-5; Capistrano Valley def. University 14-4; Dana Hills def. La Canada 18-0; Rolling Hills def. Edison 12-6; San Marino def. San Marcos 12-6; Corona del Mar def. El Toro 15-3.

Quarterfinals: Palos Verdes def. Santa Barbara 16-2; Capistrano Valley def. Miraleste 9-9 (77-74); Dana

SOUTHERN SECTION CIF/REEBOK 1990 GIRLS TEAM TENNIS CHAMPIONS

4-A DIVISION Palos Verdes

3-A DIVISION Westlake

2-A DIVISION Sunny Hills

1-A DIVISION San Luis Obispo

SMALL SCHOOLS DIVISION Brentwood

CROSS COUNTRY RESULTS

(Continued from page 10)

3. Sumi, Long Beach Wilson (18:21)
4. Roda, Irvine (18:26)
5. York, Agoura (18:32)
6. Gillis, Irvine (18:46)
7. Orefice, Arroyo Grande (18:49)
8. Barr, Arroyo Grande (19:03)
9. Smith, Diamond Bar (19:04)
10. Muneno, Palos Verdes (19:07)

GIRLS DIVISION II

Team - II-AA

1. Canyon/Anaheim - 55
2. Tustin - 60
3. Edison - 69
4. Mission Viejo - 70
5. Claremont - 91
6. Torrance - 146

Team - II-A

1. Westlake - 39
2. Woodbridge - 46
3. El Modena - 81
4. Valencia - 83
5. Katella - 117
6. West Torrance - 134

Individual

1. Rothman, Westlake (17:27)
2. Taylor, Edison (17:54)
3. Pinto, Katella (18:08)
4. Nekota, Woodbridge (18:08)
5. Monson, Claremont (18:57)
6. Brix, University (19:06)
7. Graham, Westlake (19:08)
8. Hildebrand, Mission Viejo (19:14)
9. Alexander, Tustin (19:24)
10. Killeen, Valencia (19:31)

GIRLS DIVISION III

Team - III-AA

1. Foothill - 46

Hills def. Rolling Hills 11-7; Corona del Mar def. San Marino 13-5.

Semifinals: Palos Verdes def. Capistrano Valley 12-6; Corona del Mar def. Dana Hills 13-5.

Finals: Palos Verdes def. Corona del Mar 9-9 (77-67).

3-A DIVISION

First Round: Calabasas bye; Arcadia def. Burbank 15-3; Laguna Beach def. El Modena 16-2; Diamond Bar def. San Geronio 15-3; Westlake/L.A. def. Camarillo 14-4; Poly/R. def. Villa Park 15-3; North Torrance def. West Covina 13-5; Agoura def. Hart 15-3; Westlake def. Nordhoff 18-0; Alhambra def. Crescenta Valley 16-2; South Torrance def. Los Altos 13-5; Estancia def. San Gabriel 17-1; Foothill def. Laguna Hills 13-5; Redlands def. Rowland 15-3; Marlborough def. Glendale 12-6; Beverly Hills def. Thousand Oaks 16-2.

Second Round: Calabasas def. Arcadia 14-4; Diamond Bar def. Laguna Beach 16-2; Westlake/L.A. def. Poly/R. 14-4; Agoura def. North Torrance 13-5; Westlake def. Alhambra 15-3; Estancia def. South Torrance 13-5; Foothill def. Redlands 12-6; Beverly Hills def. Marlborough 14-4.

Quarterfinals: Calabasas def. Diamond Bar 9-9 (69-66); Agoura def. Westlake/L.A. 10-8; Westlake def. Estancia 15-3; Beverly Hills def. Foothill 12-6.

Semifinals: Calabasas def. Agoura 12-6; Westlake def. Beverly Hills 9-9 (79-72).

Finals: Westlake def. Calabasas 10-8.

2-A DIVISION

First Round: Los Alamitos bye. Lakewood def. Fullerton 10-8; J.W. North def. Central 15-3; Katella def. Cerritos 11-7; Glendora def. Esperanza 12-6; Chaminade def. Downey 16-2; Canyon Springs def. Indio 11-7; Mater Dei def. Chino 13-5; Rosary def. Poly/L.B. 15-3; Palm Desert def. Palm Springs 11-7; Upland def. Hemet 14-4; El Dorado def. Sonora 11-7; Santa Margarita def. Wilson/L.B. 11-7; Paramount def. Notre Dame/S.O. 13-5; Louisville def. Claremont 10-8; Sunny Hills def. Warren 15-3.

Second Round: Los Alamitos def. Lakewood 17-1; Katella def. J.W. North 11-7; Chaminade def. Glendora 11-7; Mater Dei def. Canyon Springs 12-6; Palm Desert def. Rosary 10-8; El Dorado def. Upland 12-6; Santa Margarita def. Paramount 11-7; Sunny Hills def. Louisville 13-5.

Quarterfinals: Los Alamitos def. Katella 16-2; Mater Dei def. Chaminade 10-8; El Dorado def. Palm Desert 12-6; Sunny Hills def. Santa Margarita 12-6.

Semifinals: Los Alamitos def. Mater Dei 10-8; Sunny Hills def. El Dorado 9-9 (74-62).

Finals: Sunny Hills def. Los Alamitos 12-6.

1-A DIVISION

Wild Card: Lompoc def. St. Joseph/S.M. 14-4; Barstow def. Norco 12-6; Mayfield def. Mountain View 15-3.

see GIRLS TEAM TENNIS page 12

CONGRATULATIONS CIF/REEBOK STATE CROSS COUNTRY CHAMPIONS

TEAMS

HART - BOYS DIVISION I
SAN MARINO - BOYS DIVISION III
FILLMORE - BOYS DIVISION IV
AGOURA - GIRLS DIVISION I
NORDHOFF - GIRLS DIVISION IV

INDIVIDUALS

LOUIE QUINTANA, ARROYO GRANDE
BOYS DIVISION I
JEFF WILSON, NEWBURY PARK
BOYS DIVISION III
DEENA DROSSIN, AGOURA
GIRLS DIVISION I
JEANNIE ROTHMAN, WESTLAKE
GIRLS DIVISION II
CARRIE GARRITSON,
RIM OF THE WORLD
GIRLS DIVISION III
JENNIFER LACOVARA, MORRO BAY
GIRLS DIVISION IV

Individual

1. Lacovara, Morro Bay (18:40)
2. Aparicio, Fillmore (18:44)
3. Parkinson, Orange Lutheran (18:59)
4. Shaw, Fillmore (19:27)
5. Kendig, La Reina (19:34)
6. Garcia, Nordhoff (19:51)
7. Spellman, Nordhoff (20:08)
8. Ambrozak, St. Joseph, Santa Maria (20:13)
9. Wester, Maranatha (20:17)
10. Ewing, Morro Bay (20:23)

SOUTHERN SECTION CIF/REEBOK GIRLS 1990 INDIVIDUAL TENNIS RESULTS

SINGLES

Quarterfinals: Keri Phebus (Corona del Mar) def. Stacey Jellen (Calabasas) 6-1, 6-2; Anne Mall (Dana Hills) def. Lindsay Davenport (Chadwick) 6-3, 6-0; Nicole London (Palos Verdes) def. Natasha Pospich (Calabasas) 6-1, 3-6, 6-4; Nicole Hummel (San Marino) def. Ania Bleszynski (Marlborough) 6-1, 6-3.

Semifinals: Anne Mall (Dana Hills) def. Keri Phebus (Corona del Mar) 6-3, 7-5; Nicole Hummel (San Marino) def. Nicole London (Palos Verdes) 6-2, 6-2.

Finals: Anne Mall (Dana Hills) def. Nicole Hummel (San Marino) 6-2, 2-6, 7-5.

DOUBLES

Quarterfinals: Stephanie Lansdorp/Amber Basica (Rolling Hills) def. Alison Paris/Tracy Paris (Calabasas) 6-2, 6-3; Bee Ambesbutr/Beam Amesbutr (Chino) def. Courtney Strauss/Michelle McFarland (Corona del Mar) 2-6, 7-5, 6-4; Jennifer Cohen/Allyson Reeves (Palos Verdes) def. Kim Suuart/Jennifer Reese (Westlake/Westlake) 7-6, 6-2; Heather Bolton/Anna Zaricki (Dana Hills) def. Lindsey Wasserman/Kerry Gallant (Westlake/L.A.) 6-3, 6-0.

Semifinals: Lansdorp/Basica (Rolling Hills) def. (Amesbutr/Amesbutr (Chino) 6-4, 6-1; Bolton/Zaricki (Dana Hills) def. Cohen/Reeves (Palos Verdes) 0-6, 6-3, 7-6 (8-6).

Finals: Lansdorp/Basica (Rolling Hills) def. Bolton/Zaricki (Dana Hills) 6-1, 6-2.

FOOTBALL PLAYOFFS

(Continued from page 6)

EIGHT-MAN LARGE DIVISION

FIRST ROUND: Rio Hondo Prep 45, Laton 0; Webb 30, Mission Prep 29; Brentwood 32, Templeton 16; Faith Baptist 76, Flintridge Prep 30.

SEMIFINALS: Rio Hondo Prep 49, Webb 8; Faith Baptist 44, Brentwood 20.

FINALS: Rio Hondo Prep 35, Faith Baptist 6.

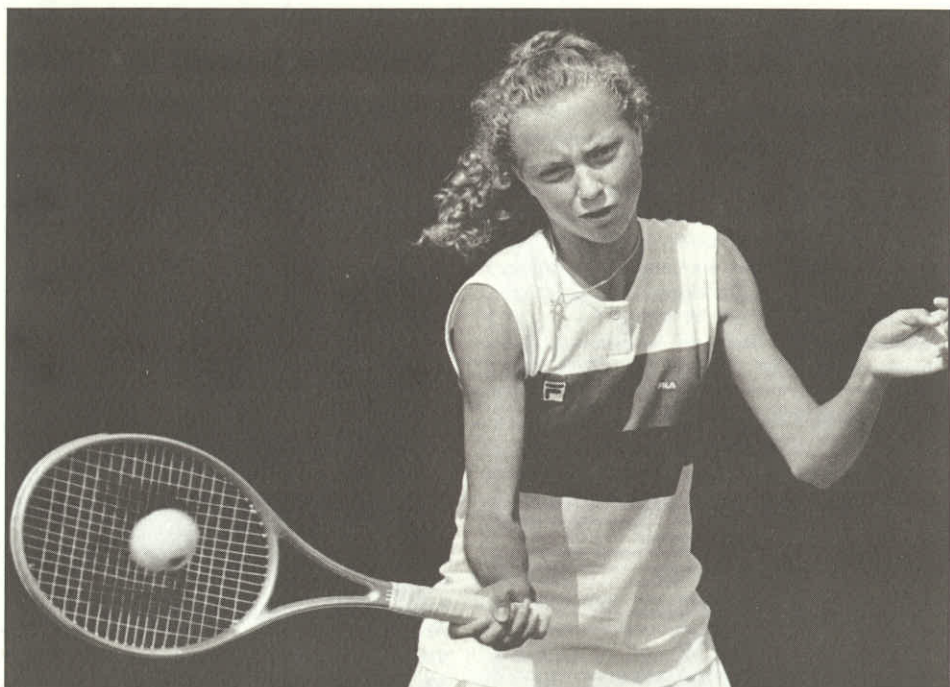
EIGHT-MAN SMALL DIVISION

FIRST ROUND: Antelope Valley Christian 54, So. Bay Lutheran 6; Cal. Lutheran 49, Harbor Christian 0; Community Christian 36, Liberty Christian 8; Lone Pine 56, Victor Valley Christian 28; Bloomington Christian 82, L.A. Lutheran 42; Big Pine 45, Ambassador Christian 10; Shandon 20, First Lutheran 14; Central Valley Christian 30, Pilgrim 0.

QUARTERFINALS: Antelope Valley Christian 52, Cal. Lutheran 6; Lone Pine 40, Community Christian 28; Big Pine 54, Bloomington Christian 8; Central Valley Christian 48, Shandon 18.

SEMIFINALS: Antelope Valley Christian 40, Lone Pine 20; Central Valley Christian 43, Big Pine 28.

FINALS: Antelope Valley Christian 54, Central Valley Christian 26.



1990 CIF-SS Singles Champ — Anne Mall of Dana Hills

Photo by Gary Ambrose, L.A. Times

GIRLS TEAM TENNIS

(Continued from page 11)

First Round: Corona def. Savanna 14-4; Keppel def. San Bernardino 11-7; Montebello def. Santiago 12-6; Poly/Pasadena def. Brea-Olinda 15-3; Righetti def. Saugus 17-1; Santa Ynez def. Bishop Diego 17-1; La Reina def. Burroughs/R. 10-8; Cate def. Lompoc 13-5; Chadwick def. Kennedy 14-4; Thacher def. Arroyo 12-6; Quartz Hill def. La Serna 14-4; Cajon def. Centennial/Corona 15-3; Valencia def. Whittier 15-3; Bolsa Grande def. Barstow 13-5; Morro Bay def. Carpinteria 14-4; San Luis Obispo def. Mayfield 12-6.

Second Round: Corona def. Keppel 15-3; Montebello def. Poly/Pasadena 11-7; Righetti def. Santa Ynez 15-3; Cate def. La Reina 14-4; Chadwick def. Thacher 12-6; Cajon def. Quartz Hill 10-8; Valencia def. Bolsa Grande 14-4; San Luis Obispo def. Morro Bay 13-5.

Semifinals: Cate def. Corona 10-8; San Luis Obispo def. Chadwick 13-5.

Finals: San Luis Obispo def. Cate 11-7.

SMALL SCHOOLS DIVISION

First Round: Ramona Convent bye. Bloomington def. Bishop 11-7; Montclair def. Big Bear 11-7; Rim of the World def. San Dimas 17-1; Bonita def. Bassett 14-4; Walnut def. Beaumont 11-7; Connelly def. Norwalk 11-7; Brentwood def. South Hills 13-5; Etiwanda bye. Flintridge Sacred Heart def. Desert 15-3; Whitney def. Glenn 13-5; La Sierra def. Gladstone 9-9 (77-75); Yucaipa def. Mammoth 17-1; San Jacinto def. Workman 12-6; Crossroads def. Orange Lutheran 11-7; La Mirada bye.

Second Round: Ramona Convent def. Bloomington 10-8; Rim of the World def. Montclair 11-7; Bonita def. Walnut 12-6; Brentwood def. Connelly 13-5; Etiwanda def. Flintridge Sacred Heart 12-6; Whitney def. La Sierra 10-8; San Jacinto def. Yucaipa 10-8; La Mirada def. Crossroads (score N/A).

Quarterfinals: Rim of the World def. Ramona Convent 10-8; Brentwood def. Bonita 13-5; Etiwanda def. Whitney 10-8; La Mirada def. San Jacinto 12-6.

Semifinals: Brentwood def. Rim of the World 12-6; La Mirada def. Etiwanda 12-6.

Finals: Brentwood def. La Mirada 10-8.

EXECUTIVE COMMITTEE

(Continued from page 1)

coaching education program and sex equity issues currently on the State Board of Education agenda for February.

9. LEGAL UPDATE — Attorney Andy Patterson reviewed the Atascadero Independent Study question, and issues faced during the Reebok contract negotiations.

10. FALL SPORTS REPORT — Associate Commissioner Dean Crowley, Administrators Bill Clark and Karen Hellyer reported on the fall sports playoff activities, including cross country, football, girls' tennis, girls' volleyball, and water polo.

11. SUMMER DEAD PERIOD — Commissioner Stan Thomas reviewed with the Committee the Summer Dead Period which will become effective August 1, 1991. Athletic Administrators and coaches should be aware of this new rule, effective for this coming summer. It should be noted that specific guidelines regarding the summer dead period are in each and every sport section of the Blue Book under "Summer-time Rules and Regulations."

12. NEW MEMBERSHIP — It was moved, seconded and passed to approve membership for Challenger Christian High School (Lancaster); Wilshire West High School (Santa Monica); Stratford Prep (Van Nuys); and Westview School (Los Angeles), effective immediately. Additionally, Dr. Jacobson appointed a committee to review the language of area placement of small schools within the Section in order that they may be placed appropriately within the private school framework, giving consideration to their size and location. Members of this committee will include Bill McKinley, Gary Smidderks, Fr. William Brelsford and Edna Herring, in addition to a CIF-SS staff member.

There being no further business to come before the Committee, the meeting was adjourned at 5:00 p.m.

Submitted by:
DEAN CROWLEY,
ASSISTANT COMMISSIONER

Approved by:
STAN THOMAS,
COMMISSIONER OF ATHLETICS