

**"THE '90s - A NEW BEGINNING"**

## ATHLETIC SYMPOSIUM SET FOR FEB. 7

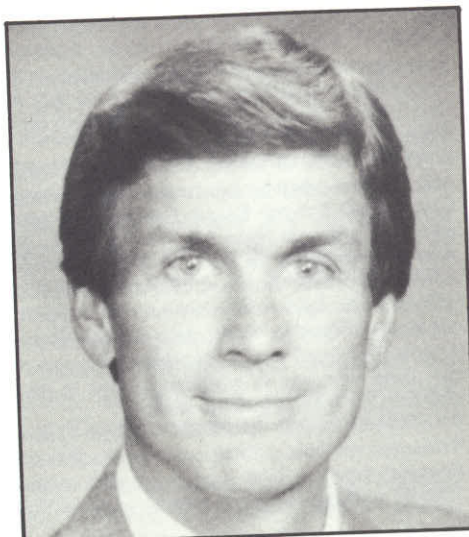
### Michigan's Jack Roberts To Keynote Event

The CIF Southern Section will ring in the new decade by presenting its 11th annual Athletic Administrators Symposium, entitled "The '90s - A New Beginning", scheduled for Wednesday, Feb. 7, at the Sequoia Athletic Club of Buena Park, beginning at 8 a.m.

John E. "Jack" Roberts, Executive Director of the Michigan High School Athletic Association, will be the featured speaker. In his keynote address, "Taking Sportsmanship Higher and Farther", Mr. Roberts hopes to impress upon athletic administrators to consider the practice of sportsmanship in a new light and to see the great effect good sportsmanship can have on high school athletic programs. The keynote theme is timely, in that the National Federation of State High School Associations has declared good sportsmanship as the major thrust of the 1989-90 school year.

In three years at the helm of the Michigan High School Athletic Association, Roberts has implemented programs to improve communications to and from 1,300 member schools, 10,000 registered officials and 13,000 head coaches. He has inspired the

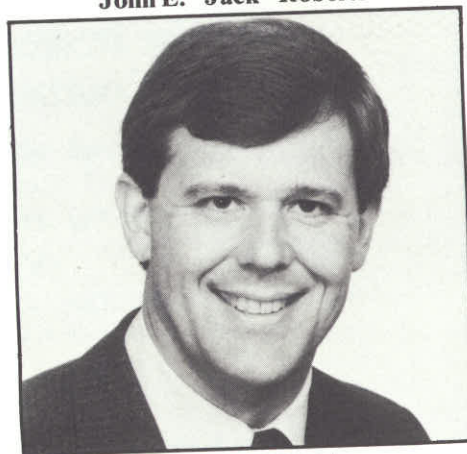
see SYMPOSIUM page 5



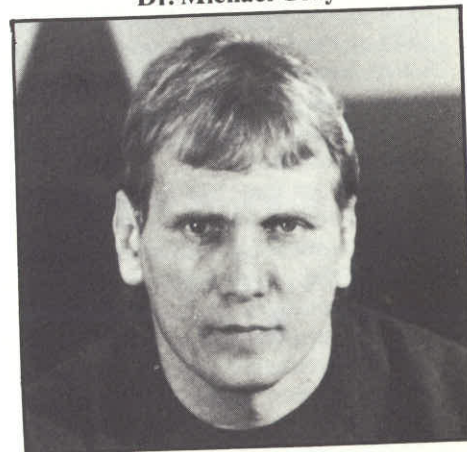
John E. "Jack" Roberts



Dr. Michael Gray



Michael Pfahl



Bob Hazelton

## REEBOK, COCA-COLA MAJOR STATE-WIDE SPONSORS



Jack-In-The-Box,  
Gatorade  
Back CIF-SS Activities

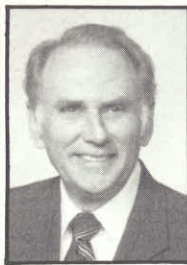
see CORPORATE page 3



*Serving High School Athletics  
Since 1913*



## COMMISSIONER'S CORNER



### A NEW MIND SET ... LITIGATION

By Stan Thomas  
Commissioner of Athletics

The CIF Southern Section Office experienced, during the months of November and December, four courtroom cases and three hearings which nearly resulted in litigation. The time and effort to defend our rules, as written and approved by principals of the Southern Section, has been significant.

As you are aware, each school pays to the State CIF, a legal/liability assessment on an annual basis. This fee pays the cost of litigation each time a booster club, student or member school district determines that it is in their best interest to sue the Southern Section.

I believe it is appropriate to review with our Section, the November and December issues as they were presented. The following took place:

—Huntington Beach High School Booster Club litigated the CIF Southern Section on Tuesday, November 14, 1989 at the Orange County Superior Court because an ineligible student (residential transfer) had played in all ten games and their football season was forfeited.

You may or may not be aware that Judge Thomas Thrasher, of the Orange County Superior Court ruled in favor of the parents, thereby rendering the Southern Section rules temporarily impotent.

This ruling created chaos for the first round of the Division I football playoffs.

CIF-SS Attorney, Andy Patterson, recommended we appeal the decision to the California Appellate Court. This was accomplished the following Thursday, November 16, 1989 and we received a favorable opinion overturning the Superior Court decision.

—Meanwhile, two additional school districts were reviewing what took place at the Orange County Superior Court.

see COMMISSIONER'S CORNER page 13

## EXECUTIVE COMMITTEE MINUTES

October 26, 1989

The October meeting of the CIF-SS Executive Committee was called to order by Chairman Dr. Tom Jacobson at 1:00 p.m. on Thursday, October 26, 1989 at the CIF-SS Office. All members were present with the exception of Cynthia Grennan and Bruce Kitchen.

**1. PRESIDENT'S UPDATE** — President Dr. Tom Jacobson reported on the National Federation Section 7 and 8 Conference as it related to issues facing state high school athletic associations.

**2. COMMISSIONER'S UPDATE** — Commissioner Stan Thomas updated the Committee on work being done by the Area Placement Committee, the Parochial and Foothill Areas Releaguizing Process, an on-going investigation involving a possible 510 undue influence rule violation, and the Palmdale/Saugus football incident. Additionally, Commissioner Thomas reviewed with the Committee the CIF-SS goals and objectives.

**3. BOYS' A.D. UPDATE** — Athletic Director Representative Rich Ramirez addressed concerns relative to athletic budgets and the lack of time athletic directors are given to perform their duties.

**4. GIRLS' A.D. UPDATE** — Sherri Ross, Girls' A.D. Representative, reported on the Orange County AD/School Board Presidents' Night, and the California State AD Conference to be held in Burlingame on April 19-22, 1990. Additionally, Ms. Ross discussed with the Committee concerns dealing with districts not fully supporting athletic directors in the area of professional growth. The trend now is for athletic directors to pay their own way to conferences and to take sick days for time away from school.

**5. TREASURER'S REPORT** — Ken Gunn, Treasurer, provided a final review of the 1988-89 financial report and an update on the current 1989-90 working budget. It should be noted that

the Auditor's report reflected an excellent system of checks and balances and a commendation to Shirley Frazier, Accountant, was in order.

### 6. STATE REPORT/ACTION ITEMS —

**(A) EXECUTIVE COMMITTEE VACANCY** — Rene Townsend (San Diego) was elected to replace Dennis Chaconas on the State Executive Committee.

**(B) STATE BY-LAW MODIFICATION** — Passed a proposal modifying by-laws 204, 206 (a), 206 (b), 304 and 604, effective July 1, 1990.

**(C) WRESTLING WEIGHTS** — Adopted the National Federation Wrestling weights for the 1990-91 school year.

**(D) CONSTITUTIONAL AMENDMENT TO ARTICLE 4 SECTION 42** — Passed the amendment deleting item (C) giving the State Commissioner more specific authority in State playoffs.

**(E) BASKETBALL COACHES BOX** — passed the proposal allowing for the National Federation option to use the Coaches' Box in basketball for the upcoming 1989-90 basketball season.

**(F) MODIFICATION OF BY-LAW 1203 (b) — SUMMERTIME ACTIVITIES** — At the request of Superintendents' Representative Jim Fleming, this item was tabled.

**(G) WAIVER OF RULE 308** — The Northern Section was granted a waiver of Rule 308.

**(H) BASKETBALL TRAVEL ALLOWANCE** — A proposal to increase the travel allowance in the State basketball playoffs was defeated.

The following are items that will be voted on in February by the State Federated Council:

**(A) BASKETBALL TIME-OUT RULE** — That California come into compliance with National Federation Basketball Rules in the area of time outs, effective with the 1990-91 season.

**(B) CROSS COUNTRY** — A proposal to see EXECUTIVE MINUTES page 4

## California Interscholastic Federation Southern Section

11011 Artesia Blvd. (90701) — P.O. Box 488 (90702)

Cerritos, CA

(213) 860-2414 — (714) 826-5390

### OFFICERS

Dr. Tom Jacobson, Principal,  
Corona del Mar High School, President

Dr. Robert M. Packer, Superintendent,  
Duarte Unified, Past-President

Dr. Gary Smidderks, Superintendent-Principal,  
Los Angeles Baptist High School, President-Elect

Mr. Ken Gunn, Principal,  
Walnut High School, Treasurer

Mr. Stan Thomas, Commissioner of Athletics

### BULLETIN EDITOR

Mr. Scott Cathcart  
CIF-SS Director of Media and Public Relations

Bulletin Published Six Times Yearly  
By CIF-Southern Section

## CORPORATE

## JACK-IN-THE-BOX, GATORADE BOLSTER CIF-SS PROGRAMS

Jack-In-The-Box, the official fast food restaurant of the CIF Southern Section and co-sponsor of the Southern Section CIF/Reebok/Jack-In-The-Box Football Championships, is entering its fourth year of corporate sponsorship. As part of this most successful relationship, Jack-In-The-Box provides a special discount offer for its new grilled sourdough burger on the ticket-backs of all Southern Section football and basketball playoff and championship contests.

"Jack-In-The-Box restaurants are proud to have the opportunity to continue to support the CIF Southern Section in its endeavors to provide an arena for excellence," said Richard J. Wenz, Regional Marketing Manager, Jack-In-The-Box. "Today's youth are tomorrow's leaders and we look forward to sponsoring exceptional athletic competitions for them," added Wenz.

Gatorade, the Official Thirst Quencher of the Southern Section, is and will continue to be a most supportive corporate member. Gatorade's generous donation of coolers, product mix and cups to participating teams in Southern Section championship competition has delighted member schools for many years.

"Gatorade is quite proud of its long-time association with the CIF Southern Section and we are pleased to continue

our support of their fine efforts," said William D. Schmidt, Vice President of Sports Marketing for the Quaker Oats Company, maker of Gatorade Thirst Quencher. "The CIF Southern Section, whose activities benefit so many young athletes each year, is an important association for Gatorade. We are pleased that Gatorade's support helps the CIF Southern Section continue to provide the youth of California with the quality sports opportunities they deserve."

"We greatly appreciate the continued support of our loyal Southern Section sponsors," said Stan Thomas, Commissioner-CIF Southern Section. "Jack-In-The-Box and Gatorade have created a strong following among our member schools because their benefits are directed toward the student-athletes themselves. We salute their efforts and encourage personnel of member schools to patronize Jack-In-The-Box, Gatorade and all Southern Section sponsors," added Thomas.

Jack-In-The-Box and Gatorade are joined by state-wide sponsors Reebok and Coca-Cola, in addition to Southern Section sponsors California Angels, Conlin Bros. Sporting Goods, Ford Motor Company, Herff Jones, Sunny Delight, Turbo Sports Nutrition and Wilson Sporting Goods in the support of high school athletics.

## ATHLETIC DIRECTORS

## DALLAS '89 — A RECAP

By Sheri Ross - Girls Athletic Director, El Toro High School

The pre-flight checklist for any athletic director planning to attend a National Conference that requires time away from the school site is endless! Regardless of the time of year, the normal routine of the athletic administrator continues: securing officials, insuring transportation, enlisting game supervision, checking equipment and facilities, communicating with on-staff coaches, temporary coaches and opposing school personnel and, in many cases, providing lesson plans for the substitute teacher.

While in the air the second guessing begins ... what has been overlooked? Was that tournament fee paid? Will the officials show for the home basketball game? Will the district line the soccer field in time for our first game? Finally, the realization occurs that you have done all you can! Your job now is to

look forward to and concentrate on the National Athletic Directors Conference and the professional growth received by attending.

This year, the 20th annual National Conference of High School Athletic Directors was held in Dallas, Texas, December 10-13, at the Hyatt Regency Hotel, Reunion Plaza. In conjunction with the conference was the thirteenth annual meeting of the National Interscholastic Athletic Administrators Association (NIAAA).

Keeping in line with the tradition of providing top notch professional speakers, the opening general session was earmarked by the motivational message of Zig Ziglar's "Winning Is a Choice." Encouraging audience feedback, Ziglar identified qualities an athlete

see ATHLETIC DIRECTORS page 12



By  
Dean Crowley  
Associate  
Commissioner  
of Athletics

## LITIGATION CONCERN

During the recent football playoffs, the CIF Southern Section underwent a period of internal upheaval and self-destruction unprecedented in the 77-year history of the organization.

The severity and scope of the unrest forced the CIF-SS — namely, its member schools — to defend their ability to administer their own program in state and even federal courtrooms. In addition to three major incidents where court action was brought against the organization, litigation in as many as five other cases was threatened.

Although the CIF Southern Section was able to maintain its integrity and enforce its rules through the recent purge, the costs were high to its member schools, both in monetary and public relations terms.

In the great flood of media attention devoted to CIF-SS activities during the period, one article best described the situation from the organization's point of view. It was an editorial column written by Jim Carlisle of the Thousand Oaks News Chronicle, appearing on Nov. 19, 1989. It is reprinted here with the generous permission of Mr. Carlisle and the News Chronicle ...

## OBEY THE RULES

By Jim Carlisle,  
Thousand Oaks News Chronicle

It's been a pretty big weekend for high school football in the area, particularly in the Conejo Valley where all three representatives of the Marmonte League — Thousand Oaks, Newbury Park and Westlake — won in the first round of the CIF-Southern Section Division II playoffs. Agoura won in the first round of the Division VIII playoffs.

Just be glad none of those teams were in Division I.

It's not that teams in Division I are necessarily tougher on the football field. They do seem to be fearless in the courtroom, however.

see RULE REVIEW page 15



## EXECUTIVE COMMITTEE MINUTES

### November 28, 1989

The November meeting of the CIF Southern Section Executive Committee was called to order by Chairman Dr. Tom Jacobson at 1:15 p.m. on Tuesday, November 28, 1989 at the CIF-SS Office. All members were present with the exception of Cynthia Grennan.

**1. MINUTES** - It was moved, seconded and passed to approve the minutes of the CIF-SS Executive Committee meeting of October 26, 1989.

**2. PRESIDENT'S UPDATE** - President Dr. Tom Jacobson commended the Section Office for its work during the fall playoffs. Additionally, he discussed concerns with the Committee with regard to litigation and schools challenging the rules of the organization.

**3. COMMISSIONER'S UPDATE** - Commissioner Stan Thomas reviewed concerns with reference to playoffs, playoff draws, litigation and the responsibility of member schools to follow the rules in the Constitution and By-laws of the organization. He also updated the Committee on the Palmdale/Saugus football incident, with a hearing set for January 10, 1990 at the Sequoia Club in Buena Park, and the Elsinore/Elsinore Christian hearing which will be held on January 23, 1990 at Elsinore High School. It should be noted the following Committee members will be in attendance for this hearing: Frank Cano, Ken Crowe, Fr. Bill Brelsford, Dr. Tom Jacobson, Bruce Kitchen, Ken Gunn, Sheri Ross, Rich Ramirez, Gary Smidderks, and Tom Triggs. Commissioner Thomas also reviewed with the Committee the fall championship activities, the staff time management in-service program, AAF soccer program, resolution of an insurance question dealing with facility usage, and the football press conference/luncheon set for Monday, December 4, 1989.

**4. BOYS' A.D. UPDATE** - Rich Ramirez, Boys' A.D. Representative, reviewed with the Committee the incident procedures and guidelines that are now in place in the Desert Valleys League.

**5. GIRLS' A.D. UPDATE** - Sheri Ross, Girls' A.D. Representative, discussed with the Committee the State Volleyball Championships, the National Athletic Director Conference to be held in December in Dallas, Texas.

**6. TREASURER'S UPDATE** - Ken Gunn, Treasurer, provided an update of the 1989-90 working budget and a projected income from fall playoff activities. Additionally, concerns were expressed relative to 20 schools still delinquent in the payment of dues for the 1989-90 school year.

**7. STATE CIF REPORT** - Dr. Robert Packer, State CIF President-elect, updated the Committee on the ongoing Reebok/Coca-Cola/School Properties contract negotiations.

**8. LEGAL UPDATE** - Attorney Andy Patterson reviewed the Huntington Beach, La Puente and Savanna High School court actions. Following discussion, it was moved, seconded and passed that when schools engage the CIF-SS in litigation, the school principal and/or other appropriate school district representatives be required to appear before the Executive Committee for the purpose of counsel, review and evaluation. This action will be taken in order to protect the integrity of the rules and regulations of the organization.

Other recommendations to be taken into consideration were that the Blue Book Committee consider giving the Commissioner more authority during the playoffs; that an Executive Committee member in-service the leagues in their respective area with reference to rules and regulations of the organization; that the Office develop some additional procedures to better assist

schools in dealing with transfer students other than the transfer eligibility card, which apparently is not being used as evidenced in recent court litigation.

**9. ALTA-PAS CHRISTIAN ACADEMY MEMBERSHIP APPLICATION REQUEST** - Mr. Charles Hill, Superintendent, Bobbie J. Hill, Principal, and parent Gloria Pellebon appeared before the Committee relative to their membership request for the Alta-Pas Christian Academy. Following discussion, it was moved, seconded and passed to approve membership, effective immediately.

**10. HALL OF FAME COMMITTEE REPORT** - Bruce Kitchen reviewed with the Committee the on-going work of the Hall of Fame Committee. Following discussion, it was moved, seconded and passed to forward to the State CIF Office the Southern Section recommendations for nomination to the National Federation Hall of Fame: Riverside Poly basketball player Cheryl Miller and former Section Commissioner Ken Fagans.

**11. NEW MEMBERSHIP** - It was moved, seconded and passed to approve membership for Murrieta Valley High School, Murrieta.

There being no further business to come before the Committee, the meeting adjourned at 5:23 p.m.

Submitted by  
DEAN CROWLEY  
ASSOCIATE COMMISSIONER

Approved by  
STAN THOMAS  
COMMISSIONER OF ATHLETICS

### SANTA ANA VALLEY MOURNS MOELLER

The CIF Southern Section was saddened by the loss of Santa Ana Valley High School Girls' Athletic Director Judy Moeller, who passed away in November after a bout with cancer.

Moeller, 47, was named the 1989 CIF Southern Section Girls' Athletic Director of the Year at the California State Athletic Directors' Conference in Palm Springs last April. Moeller served for 10 years at Santa Ana Valley, eight as girls director of athletics and nine as Chairman of the Physical Education Department. She was also noted as an outstanding volleyball coach during her years in the Falcon program.

Prior to joining the Santa Ana Valley staff in 1979, Moeller coached and taught at Cerro Villa Junior High School in the Orange Unified School District.

Santa Ana Valley High School has founded a "Judy Moeller Memorial Scholarship Fund". To make contributions, please contact Santa Ana Valley High School Principal Judith Duesterberg.

### EXECUTIVE MINUTES- October 26, 1989

(Continued from page 2)

increase the number of divisions from three to four, with the objective of balancing the number of schools in each division. It should be noted that this will not increase the number of participants in the State Cross Country Championships.

**(C) STATE BUDGET** - A proposal dealing with the timeline for submitting budget items to the State Executive Committee for consideration in the budget submission to the State Federated Council.

In other State business, Pat Rooney, Consultant for the CIF, reported on the progress of the "Toward the Year 2000" study, and additionally, an ad hoc committee was appointed to study concerns of issues dealing with live telecasts of high school athletic events.

**7. AREA PLACEMENT CRITERIA COMMITTEE** - Chairman Clark Stevens, Principal of Liberty Christian High School, updated the Committee on work being done by the Area Placement Committee.

**8. LONE PINE HIGH SCHOOL** - Attorney John Wagner, representing the Lone Pine Unified School District, presented oral arguments and testimony to the Executive Committee relative to Lone Pine High School's appeal regarding placement in the Christian League for 8-Man Football. Additionally, Attorney Charles White, representing the Christian League, presented oral arguments and testimony in opposition to the Lone Pine appeal.

In open session and following deliberation, it was moved, seconded and passed to take no action on the appeal of Lone Pine and Big Pine High Schools due to the fact the issue is a cross-leaguage problem and falls under the provisions of Rule 137.1. Additionally, it was noted by the Committee that Lone Pine and Big Pine were not members of the Christian League as noted in the 1988-90 and 1990-92 leaguage, which placed Lone Pine and Big Pine in the Desert releaguage area as members of the Desert-Inyo League (Small).

**9. NEW MEMBERSHIP** - It was moved, seconded and passed to approve membership for the following schools: Ayala High School (Chino), Glendale Adventist School, and Hemet Unified School District High School no. 2. Additionally, a request for membership of Alta-Pas Christian School (Pasadena) was tabled.

**10. FILLMORE HIGH SCHOOL FOOTBALL REQUEST** - Jaime Castellanos appeared before the Committee requesting a waiver of the football rules and regulations to allow Fillmore High School to begin football practice in pads on August 20, 1990. Following discussion, it was moved, seconded and passed to table the request until this issue is reviewed by the Season of Sport Committee and the Blue Book Committee.

There being no further business to come before the Committee, the meeting was adjourned at 5:50 p.m.

Submitted by:  
DEAN CROWLEY,  
ASSOCIATE COMMISSIONER

Approved by:  
STAN THOMAS,  
COMMISSIONER OF ATHLETICS



## NEW RULE SETS PITCHING LIMIT

The 1990 baseball season, scheduled to open in the Southern Section on March 2, will usher in a new rule that places a limitation on the amount of work an individual pitcher may complete in a single week. The rule, appearing as No. 2400 (page 109) in the CIF-SS Blue Book, has been instituted for California Interscholastic Federation member schools state wide.

The limitation rule states that pitchers may work for 30 outs and/or three appearances in a calendar week through the season, Monday-through-Saturday. Additional stipulations include: (a) Innings pitched in a no-game, i.e. rainout, power failure, etc., shall count towards the total; (b) If the 30th out involves a double or triple play, the team will not be penalized; (c) An appearance is defined as a pitcher pitching at least one pitch; (d) Any violation constitutes a forfeit of the contest.

Initiation of the limitation rule was borne out of the National Federation Baseball Rules Committee, which determined it would leave it up to the individual states to come up with their own proposal for a pitching limitation. However, the National Fed made it clear that a limitation of some kind was mandatory.

The California rule originated in the Southern Section with the CIF-SS Baseball Coaches Advisory Committee. The object for the committee was to come up with a rule that would meet the intent and purpose of the National Federation proposal and provide for equitable competition among CIF-SS member-school teams.

"There has been concern for the abuse of high school pitchers for a long time," points out CIF-SS Baseball Administrator Bill Clark. "What's interesting is the new rule creates a situation where the depth of the pitching staff becomes more important, especially in a single-elimination playoff tournament such as our championships."

See page 15 for the 1990 National Federation rule revisions.

### ATTENTION: ATHLETIC DIRECTORS

Please Note

#### The AMERICAN SCANDINAVIAN STUDENT EXCHANGE PROGRAM

is no longer on the approved list of CIF Foreign Exchange Programs for athletic eligibility. Please see Rule 212 (c), page 44 of the Blue Book, for further information.

## Be Sure To Register For The ELEVENTH ANNUAL CIF-SS ATHLETIC ADMINISTRATORS SYMPOSIUM

Wednesday, February 7, 1990

Sequoia Athletic Club

7530 Orangethorpe — Buena Park

## CIF-SS ATHLETIC SYMPOSIUM "THE '90s — A NEW BEGINNING"

(Continued from page 1)

membership to address the most critical issues of athletics and especially to improve upon the sportsmanship and academic integrity of high school athletics. During the past 15 years, Roberts has spoken to educators and civic groups in more than 25 states and Canada, developing a reputation as the "conscience of educational athletics".

The symposium will also include an indepth discussion of stress management, featuring Paul Arneberg, Director for International Training and Development, School of Public Administration at the University of Southern California.

The final general-session topics will include: "Steroids in Youth Sports? No Way", featuring Dr. Michael Gray, Director of National Youth Sports Research and Development Center - Northern Kentucky University; "The Price is Too High" - A Personal Tragedy, by Bob Hazelton, former professional boxer; the "NYSCA - Meeting Challenges Facing Youth Sports in America", with Mr. Michael Pfahl, National Executive Director - National Youth Sports Coaches Association.

ciation.

Additional workshop topics will include "Where Have All the Women Gone"; Motivation for Female and Male Athletes; School Sportsmanship Programs; Eligibility Check Systems; Use Of Facilities; Nutrition for Female and Male Athletes; Officials and High School Athletics; Eligibility: Blue Book Interpretations; High School Athletics at Small Schools; and Sports Media.

The event will also include a large gathering of athletic goods vendors, to demonstrate and display the latest innovations in products and services for high school programs.

All personnel involved in the administration of athletics at CIF-SS member schools -superintendents, principals, vice principals, athletic directors and activity directors- are encouraged to be in attendance. Registration materials for the 1989-90 CIF-SS Athletic Administrators Symposium have been forwarded to all CIF-SS member schools. Should further information be required, please contact the CIF Southern Section Office at (213) 860-2414 or (714) 826-5390.

## SYMPOSIUM SCHEDULE

7:30 - 8:00  
8:00 - 8:05

Registration

Welcome -

Commissioner Stan Thomas

Keynote Speaker - John E. Roberts

Session I

Session II

Vendors

General Session

8:05 - 8:50  
8:55 - 9:45  
9:50 - 10:40  
10:40 - 11:10  
11:10 - 12:55



# SOUTHERN SECTION CIF/REEBOK/JACK-IN-THE-BOX 1989 FOOTBALL PLAYOFF RESULTS

## DIVISION I

### FIRST ROUND:

Fontana 51  
Fountain Valley 6  
L. B. Wilson 35  
Alemany 14  
Edison 20  
Crespi 10  
Eisenhower 13  
Bishop Amat 11  
Loyola 35  
Lakewood 7  
Redlands 39  
Mater Dei 29  
San Geronio 32  
Ocean View 24  
L. B. Poly 32  
St. Paul 7

### QUARTERFINALS:

Fontana 28  
L.B. Wilson 0  
Edison 18  
Eisenhower 14  
Loyola 34  
Redlands 0  
San Geronio 14  
L.B. Poly 6

### SEMIFINALS:

Fontana 48  
Edison 35  
San Geronio 21  
Loyola 12

### FINALS:

Fontana 35  
San Geronio 7

## DIVISION VI

### FIRST ROUND:

Sunny Hills 28  
Kennedy 0  
Tustin 31  
Norwalk 21  
Brea 35  
Fullerton 6  
Corona del Mar 10  
Pacifica 0  
Newport Harbor 21  
Glenn 20 (OT)  
La Quinta 19  
Valencia 14  
Western 13  
Troy 0  
La Mirada 15  
Estancia 12

### QUARTERFINALS:

Sunny Hills 21  
Tustin 0  
Corona del Mar 10  
Brea 0  
La Quinta 23  
Newport Harbor 16  
La Mirada 14  
Western 0

### SEMIFINALS:

Corona del Mar 27  
Sunny Hills 0  
La Quinta 20  
La Mirada 7

### FINALS:

Corona del Mar 21  
La Quinta 10

## DIVISION II

### FIRST ROUND:

Thousand Oaks 33  
Palmdale 6  
Leuzinger 10  
Buena 6  
San Marcos 33  
Hawthorne 26  
Muir 27  
Quartz Hill 14  
Santa Barbara 44  
Crescenta Valley 7  
Newbury Park 19  
Palos Verdes 9  
Canyon/C.C. 70  
Santa Monica 20  
Westlake 24  
Arcadia 20

### QUARTERFINALS:

Thousand Oaks 18  
Leuzinger 13  
Muir 28  
San Marcos 0  
Santa Barbara 28  
Newbury Park 7  
Canyon/C.C. 28  
Westlake 14

### SEMIFINALS:

Muir 9  
Thousand Oaks 3 (OT)  
Santa Barbara 28  
Canyon/C.C. 27 (OT)

### FINALS:

Muir 7  
Santa Barbara 7

## DIVISION VII

### FIRST ROUND:

Lompoc 38  
Mira Costa 23  
Chaminade 10  
Verbum Dei 0  
Temple City 29  
St. Bernard 0  
West Torrance 29  
Harvard 9  
Notre Dame/SO 10  
Righetti 3  
San Marino 14  
So. Torrance 6  
Arroyo Grande 20  
La Canada 3  
Serra 18  
Morningside 0

### QUARTERFINALS:

Lompoc 42  
Chaminade 7  
Temple City 19  
West Torrance 14  
Notre Dame/SO 17  
San Marino 7  
Serra 32  
Arroyo Grande 25

### SEMIFINALS:

Lompoc 48  
Temple City 38  
Serra 12  
Notre Dame 3

### FINALS:

Serra 34  
Lompoc 31

## DIVISION III

### FIRST ROUND:

Capistrano Valley 35  
Burroughs, B. 21  
Santa Ana 3  
Loara 0  
Hart 41  
Dana Hills 13  
Paramount 13  
El Modena 3  
Dominguez 18  
Los Alamitos 15  
Mission Viejo 35  
Schurr 6  
Villa Park 48  
Esperanza 28  
El Toro 43  
Gahr 8

### QUARTERFINALS:

Capistrano Valley 44  
Santa Ana 12  
Paramount 16  
Hart 14  
Mission Viejo 34  
Dominguez 6  
El Toro 28  
Villa Park 14

### SEMIFINALS:

Paramount 36  
Capistrano Valley 35 (OT)  
El Toro 28  
Mission Viejo 21 (OT)

### FINALS:

Paramount 26  
El Toro 20

## DIVISION IV

### FIRST ROUND:

Wilson/H.H. 21  
Northview 14  
Ramona 26  
Bell Gardens 9  
El Rancho 21  
Covina 9  
Upland 24  
Arlington 0  
Glendora 35  
Montebello 8  
Los Altos 28  
South Hills 0  
Damien 14  
Whittier 11  
Nogales 20  
Palm Springs 13

### QUARTERFINALS:

Ramona 54  
Wilson/H.H. 12  
Upland 21  
El Rancho 0  
Glendora 16  
Los Altos 3  
Nogales 30  
Damien 24

### SEMIFINALS:

Ramona 35  
Upland 7  
Glendora 27  
Nogales 12

### FINALS:

Glendora 28  
Ramona 28

## DIVISION V

### FIRST ROUND:

Norco 35  
Indio 7  
Bassett 42  
Bonita 40  
San Bernardino 24  
Central 19  
Corona 21  
Arroyo 7  
Canyon Springs 35  
Rosemead 0  
Hesperia 42  
Gladstone 0  
Palm Desert 26  
Etiwanda 24  
Cajon 42  
Sierra Vista 15

### QUARTERFINALS:

Norco 20  
Bassett 12  
Corona 40  
San Bernardino 22  
Canyon Springs 21  
Hesperia 13  
Cajon 40  
Palm Desert 22

### SEMIFINALS:

Corona 28  
Norco 14  
Canyon Springs 27  
Cajon 14

### FINALS:

Corona 14  
Canyon Springs 10

## EIGHT-MAN LARGE DIVISION

### FIRST ROUND:

Rio Hondo Prep 39  
Brentwood 20  
Pasadena Poly 30  
Mission Prep 14  
Flintridge Prep 24  
Faith Baptist 14  
Templeton 21  
Camp Kilpatrick 20

### SEMIFINALS:

Pasadena Poly 15  
Rio Hondo Prep 12  
Flintridge Prep 52  
Templeton 7

### FINALS:

Flintridge Prep 60  
Pasadena Poly 35

## EIGHT-MAN SMALL DIVISION

### FIRST ROUND:

St. Margaret's 51  
Pilgrim 6  
Hesperia Christian 74  
Wilmington Christian 12  
Central Valley Chr. 59  
Abundant Life 14  
Victor Valley Chr. 53  
Bloomington Christian 6

### SEMIFINALS:

St. Margaret's 65  
Hesperia Christian 34  
Central Valley Chr. 31  
Victor Valley Chr. 6

### FINALS:

St. Margaret's 33  
Central Valley Chr. 28



**SOUTHERN SECTION  
CIF/REEBOK  
JACK-IN-THE-BOX  
1989 FOOTBALL CHAMPIONS**

### DIVISION I

Fontana

### DIVISION II

Muir-Santa Barbara

### DIVISION III

Paramount

### DIVISION IV

Glendora-Ramona

### DIVISION V

Corona

### DIVISION VI

Corona del Mar

### DIVISION VII

Serra

### DIVISION VIII

Trabuco Hills

### DIVISION IX

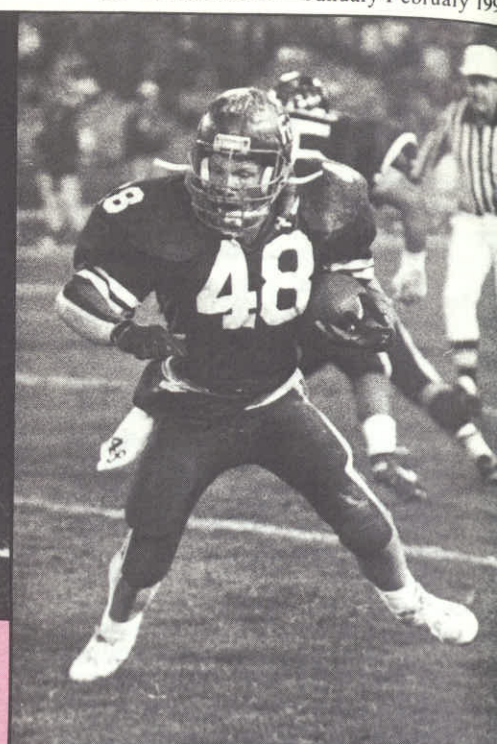
Carpinteria

### EIGHT-MAN LARGE

Flintridge Prep

### EIGHT-MAN SMALL

St. Margaret's





## SO. SEC. CIF/REEBOK 1989 CROSS COUNTRY RESULTS

### BOYS 4-A DIVISION

#### Team

1. Camarillo - 56 (78:59)
2. Saddleback - 103 (80:41)
3. San Clemente - 118 (81:20)

#### Individual

1. Dave Hartman, Canyon/C.C. (15:12)
2. Abe Valdez, Camarillo (15:13)
3. Eliazar Herrera, Hoover (15:15)
4. Israel Pose, Torrance (15:19)
5. Dan Berkeland, Canyon/C.C. (15:21)

### BOYS 3-A DIVISION

#### Team

1. Hart - 64 (82:06)
2. San Gabriel - 102 (82:51)
3. Rubidoux - 115 (83:51)

#### Individual

1. Angel Martinez, San Gabriel (15:32)
2. Luis Escanuela, Eisenhower (15:36)
3. Rene Rigal, Loyola (15:41)
4. Bill Branigan, Glendora (15:44)
5. James Pendergraph, Norte Vista (15:46)

### BOYS 2-A DIVISION

#### Team

1. Agoura - 47 (79:44)
2. Arroyo Grande - 102 (81:52)
3. Lompoc - 136 (83:48)

#### Individual

1. Bryan Dameworth, Agoura (14:36)
2. Luis Quintana, Arroyo (15:11)
3. Kyle Morris, San Luis Obispo (15:47)
4. Quentin Bever, Agoura (15:52)
5. Grega Hines, Arroyo Grande (15:56)

### BOYS 1-A DIVISION

#### Team

1. St. Anthony - 78 (84:04)

2. Cathedral - 106 (85:48)
3. Whittier Christian - 112 (86:01)

#### Individual

1. Oscar Perez, Pater Noster (16:01)
2. Geoff Janquart, St. Anthony (16:06)
3. Andre Faubert, St. Anthony (16:07)
4. Jorge Borajas, Fillmore (16:17)
5. Oscar Montes, Marantha (16:18)

### GIRLS 4-A DIVISION

#### Team

1. Palos Verdes - 51 (97:01)
2. Buena - 72 (98:24)
3. San Clemente - 137 (101:15)

#### Individual

1. Shelly Taylor, Edison (17:59)
2. Jeannie Rothman, Westlake (18:01)
3. Tanya Brix, University (18:22)
4. Martha Pinto, Katella (18:43)
5. Terri Smythers, San Clemente (18:51)

### GIRLS 3-A DIVISION

#### Team

1. Alta Loma - 68 (100:55)
2. Paramount - 77 (101:54)
3. Rubidoux - 126 (104:07)

### SOUTHERN SECTION CIF/REEBOK 1989 CROSS COUNTRY TEAM CHAMPIONS

| BOYS        |              | GIRLS        |
|-------------|--------------|--------------|
|             | 4-A DIVISION |              |
| Camarillo   |              | Palos Verdes |
|             | 3-A DIVISION |              |
| Hart        |              | Alta Loma    |
|             | 2-A DIVISION |              |
| Agoura      |              | Agoura       |
|             | 1-A DIVISION |              |
| St. Anthony |              | Marantha     |



Photo by Wayne Seiber, Highlander Publications

#### Individual

1. Nancy Ragon, Alta Loma (18:47)
2. Allison Norell, Upland (19:01)
3. Suzanne Castruita, West Covina (19:02)
4. Sheila Aguliar, Norte Vista (19:05)
5. Tish Williams, La Habra (19:07)

### GIRLS 2-A DIVISION

#### Team

1. Agoura - 47 (96:17)
2. Arroyo Grande - 83 (100:07)
3. Woodbridge - 98 (101:06)

#### Individual

1. Deena Drossin, Agoura (17:42)
2. Karen Hecox, South Hills (18:29)
3. Angela Orefice, Arroyo Grande (18:56)
4. Brandy Barr, Arroyo Grande (19:01)
5. Tiffany York, Agoura (19:04)

### GIRLS 1-A DIVISION

#### Team

1. Marantha - 96 (107:25)
2. L.A. Baptist - 96 (107:33)
3. Santa Margarita - 109 (108:37)

#### Individual

1. Maribella Aparicio, Fillmore (19:03)
2. Jean Harvey, Paraclete (19:25)
3. Cedar Lindsey, Cate (19:42)
4. Tanya Thayer, Serrano (19:51)
5. Jamie Kendig, La Reina (20:04)

### CONGRATULATIONS STATE CIF/REEBOK CROSS COUNTRY CHAMPIONS

#### TEAMS

CAMARILLO - BOYS DIVISION I  
LAGUNA BEACH - BOYS DIVISION III  
PALOS VERDES - GIRLS DIVISION I

#### INDIVIDUALS

BRYAN DAMEWORTH, AGOURA -  
BOYS DIVISION I  
OSCAR PEREZ, PATER NOSTER -  
BOYS DIVISION III  
DEENA DROSSIN, AGOURA -  
GIRLS DIVISION I

## SOUTHERN SECTION CIF/REEBOK/WEST COAST NETTING 1989 GIRLS VOLLEYBALL PLAYOFF RESULTS

### 5-A DIVISION

**Wild Card:** Bishop Montgomery def. Trabuco Hills 5-15, 15-9, 15-13, 15-5. Tustin def. South Torrance 15-13, 15-5, 15-8.

**First Round:** Mira Costa def. Zishop Montgomery 15-4, 15-2, 15-6. Dts Pueblos def. Newport Harbor 15-8, 15-12, 9-15, 15-8. Capistrano Valley def. Mater Dei 15-7, 15-7, 15-10. Laguna Beach def. Hieneme 15-8, 15-7, 15-5. Santa Barbara def. Tustin 15-10, 15-10, 15-9. Woodbridge def. El Toro 15-12, 15-11, 13-15, 15-13. St. Joseph/L. def. Redondo 15-7, 15-6, 15-1. Corona Del Mar def. Irvine 15-7, 15-10, 15-10.

**Quarterfinals:** Mira Costa def. Dos Pueblos 15-3, 15-12, 15-8. Laguna Beach def. Capistrano Valley 15-4, 15-7, 15-9. Santa Barbara def. Woodbridge 15-4, 15-10, 15-9. Corona Del Mar def. St. Joseph/L. 15-10, 15-8, 15-13.

**Semifinals:** Mira Costa def. Laguna Beach 15-5, 8-15, 15-5, 15-9. Corona Del Mar def. Santa Barbara 8-15, 15-4, 5-15, 15-12, 15-7.

**Finals:** Mira Costa def. Corona Del Mar 15-5, 13-15, 15-10, 15-13.

### SOUTHERN SECTION CIF/REEBOK WEST COAST NETTING 1989 GIRLS VOLLEYBALL CHAMPIONS

#### 5-A DIVISION

#### Mira Costa

#### 4-A DIVISION

#### Royal

#### 3-A DIVISION

#### La Habra

#### 2-A DIVISION

#### San Luis Obispo

#### 1-A DIVISION

#### Brentwood

#### SMALL SCHOOLS

#### Chadwick

### 4-A DIVISION

**First Round:** Louisville def. Alhambra 15-7, 5-5, 15-6. Glendale def. Westlake/L.A. 15-9, 13-15, 15-8, 15-6. Santa Monica def. Millikan 15-4, 11-15, 15-6, 15-3. Gahr def. Westlake/WSLK 15-9, 15-8, 15-10. Royal def. Chaminade 9-15, 15-3, 15-8, 15-2. San Gabriel def. Los Alamitos 15-10, 15-12, 15-13. Cypress def. Marlborough 13-15, 3-15, 15-9, 15-9, 15-7. Fountain Valley def. Wilson/L.B. 15-4, 15-7, 15-6. Arcadia def. Newbury Park 15-11, 15-11, 15-11. Jordan def. Leuzinger 15-1, 15-2, 15-4. Burroughs/B. def. Notre Dame/S.O. 15-13, 15-12, 9-15, 15-12. Thousand Oaks def. Pasadena 15-5, 15-1, 15-2. Esperanza def. Ocean View 14-16, 15-12, 15-8, 4-15, 15-10. Cerritos def. Torrance 15-11, 8-15, 12-15, 15-10, 15-7. Edison def. Warren 15-5, 15-11, 15-1. Notre Dame Academy def. Bell-Jeff 15-8, 15-4, 15-10.

**Second Round:** Louisville def. Glendale 15-5, 15-7, 16-14. Santa Monica def. Gahr 15-2, 15-10, 2-15, 17-15. Royal def. San Gabriel 15-13, 15-8, 15-7. Fountain Valley def. Cypress 15-3, 15-10, 14-16, 15-11. Arcadia def. Jordan 15-7, 15-14, 15-6. Thousand Oaks def. Burroughs/B. 15-5,

15-8, 15-11. Esperanza def. Cerritos 15-12, 15-5, 15-6. Edison def. Notre Dame Academy 15-9, 15-4, 16-14.

**Quarterfinals:** Louisville def. Santa Monica 15-12, 15-8, 11-15, 15-4. Royal def. Fountain Valley 15-13, 15-8, 15-7. Arcadia def. Thousand Oaks 18-16, 15-11, 15-11. Esperanza def. Edison 15-12, 15-9, 12-15, 15-10.

**Semifinals:** Royal def. Louisville 15-11, 15-4, 15-8. Esperanza def. Arcadia 13-15, 15-6, 9-15, 15-6, 15-12.

**Finals:** Royal def. Esperanza 15-13, 15-4, 15-3.

### 3-A DIVISION

**First Round:** La Habra def. Santa Fe 15-0, 15-0, 15-2. Antelope Valley def. South Pasadena 15-10, 15-13, 15-9. Santa Ynez def. Montebello 9-15, 15-9, 15-10, 16-14. San Marino def. Quartz Hill 15-1, 15-5, 15-9. West Covina def. Santa Ana Valley 8-15, 15-3, 15-8, 14-16, 15-11. Temecula Valley def. Colton 16-14, 15-13, 10-15, 15-9. Kennedy def. Fullerton 14-16, 15-8, 15-5, 15-12. Canyon/A. def. Fontana 15-0, 16-14, 15-11. Agoura def. La Serna 15-8, 15-7, 15-12. Canyon/C.C. def. Wilson/H.H. 15-5, 15-13, 15-7. La Canada def. Nordhoff 15-8, 15-11, 15-13. El Modena def. Diamond Bar 15-4, 15-5, 11-15, 15-5. Whittier def. Garden Grove 15-3, 15-5, 15-10. Notre Dame/R. def. Eisenhower 15-11, 15-6, 14-16, 8-15, 15-10. Sunny Hills def. Santiago 15-4, 15-7, 15-10. Rim of the World def. San Geronio 15-1, 15-2, 15-3.

**Second Round:** La Habra def. Antelope Valley 15-5, 15-8, 15-6. San Marino def. Santa Ynez 15-8, 7-15, 15-5, 12-15, 15-10. West Covina def. Temecula Valley 15-13, 15-13, 15-11. Canyon/A. def. Kennedy 15-2, 15-10, 15-9. Agoura def. Canyon/C.C. 15-2, 15-13, 15-13. El Modena def. La Canada 15-13, 9-15, 16-14, 15-4. Notre Dame/R. def. Whittier 15-6, 15-6, 15-8. Rim of the World def. Sunny Hills 15-12, 15-6, 9-15, 15-5.

**Quarterfinals:** La Habra def. San Marino 15-8, 15-9, 16-14. Canyon/A. def. West Covina 15-6, 15-9, 12-15, 15-13. Agoura def. El Modena 15-9, 15-10, 15-17, 15-10. Rim of the World def. Notre Dame/R. 15-6, 15-13, 6-15, 15-9.

**Semifinals:** La Habra def. Canyon/A. 15-4, 15-6, 15-8. Agoura def. Rim of the World 15-2, 2-15, 15-8, 3-15, 15-8.

**Finals:** La Habra def. Agoura 9-15, 16-14, 15-12, 10-15, 15-7.

### 2-A DIVISION

**Wild Card:** Glenn def. Anaheim 5-15, 15-5, 13-15, 15-11, 15-2. Victor Valley def. Norte Vista 15-7, 15-13, 13-15, 15-13. Pomona Catholic def. Indio 16-14, 15-8, 16-14. J.W. North def. St. Lucy's 15-4, 14-16, 16-14, 15-11.

**First Round:** Paso Robles def. Santa Maria 15-7, 15-4, 15-11. Upland def. Oak Park 15-4, 13-15, 15-9, 15-8. Arlington def. Cajon 15-11, 13-15, 15-12, 15-5. Glenn def. El Monte 15-10, 15-2, 15-5. Bellflower def. Rosemead 15-10, 15-2, 15-3. Palm Desert def. Victor Valley 15-3, 15-0, 15-10. Ontario def. Corona 0-15, 15-12, 15-13, 15-8. San Luis Obispo def. Valencia 15-1, 16-14, 15-6. La Reina def. Atascadero 15-10, 15-10, 15-9. Apple Valley def. Pomona Catholic 15-6, 15-9, 15-11. Canyon Springs def. Brawley 15-13, 15-12, 16-14. Alta Loma def. Palm Springs 9-15, 15-7, 15-12, 15-7. La Mirada def. Magnolia 13-15, 15-9, 11-15, 15-5, 15-4. Etiwanda def. J.W. North 15-7, 15-4, 15-12. St. Joseph/S.M. def. Arroyo 11-15,

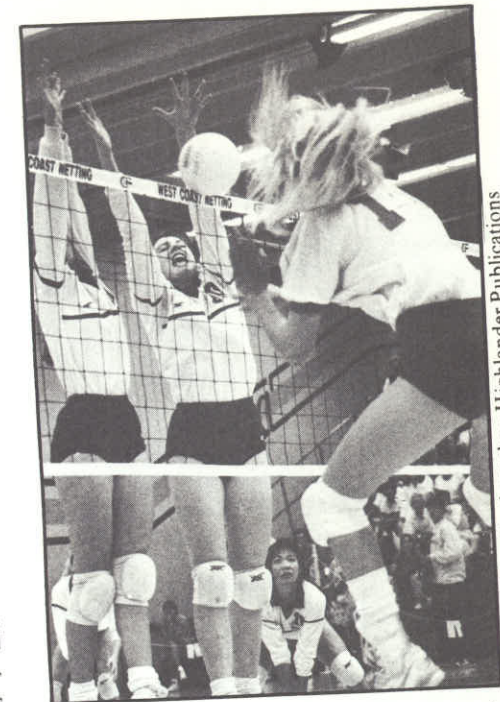


Photo by John Huthmacher, Highlander Publications

15-13, 15-8, 15-3. Arroyo Grande def. Moorpark 15-13, 15-18, 15-3.

**Second Round:** Paso Robles def. Upland 15-1, 15-5, 17-15. Arlington def. Glenn 15-12, 15-8, 18-16. Palm Desert def. Bellflower 8-15, 15-5, 15-9, 15-12. San Luis Obispo def. Ontario 15-1, 15-4, 15-6. La Reina def. Apple Valley 15-5, 15-6, 16-14. Alta Loma def. Canyon Springs 6-15, 15-5, 15-5, 15-11. La Mirada def. Etiwanda 15-11, 16-18, 15-7, 15-5. Arroyo Grande def. St. Joseph/S.M. 15-12, 15-10, 16-14.

**Quarterfinals:** Paso Robles def. Arlington 15-10, 8-15, 15-6, 15-9. San Luis Obispo def. Palm Desert 15-6, 15-0, 15-8. La Reina def. Alta Loma 15-5, 15-6, 15-7. Arroyo Grande def. La Mirada 14-16, 15-8, 15-8, 15-9.

**Semifinals:** San Luis Obispo def. Paso Robles 15-6, 15-6, 15-12. Arroyo Grande def. La Reina 15-4, 15-12, 13-15, 16-14.

**Finals:** San Luis Obispo def. Arroyo Grande 15-5, 15-11, 14-16, 15-8.

### 1-A DIVISION

**First Round:** St. Anthony def. Valley Christian/C. 15-5, 15-4, 15-10. Ramona Convent def. Sierra Vista 15-8, 15-10, 15-10. El Segundo def. St. Matthais 15-5, 7-15, 15-4, 15-8. Paraclete def. Campbell Hall 16-14, 15-13, 15-4. L.A. Baptist def. Bishop 15-2, 15-5, 15-12. Big Bear def. La Puente 15-7, 2-15, 17-15, 15-11. Walnut def. San Jacinto 15-5, 15-1, 15-11. Santa Margarita def. Pius X 15-5, 15-7, 15-5. Windward def. Crossroads 15-3, 15-6, 15-10. Capistrano Valley Christian def. Regina Caeli 15-3, 15-3, 15-5. Marantha def. San Dimas 8-15, 11-15, 15-10, 15-8, 15-11. Desert def. Serrano 15-9, 15-7, 16-14. St. Bernard def. Village Christian 13-15, 3-15, 16-14, 15-13, 15-7. Whittier Christian def. Connelly 15-6, 15-0, 15-10. South Tills def. Bassett 15-9, 15-8, 15-9. Brentwood def. Flintridge Sacred Heart 16-14, 15-8, 8-15, 10-15, 15-12.

**Second Round:** St. Anthony def. Ramona Convent 15-9, 15-9, 10-15, 15-7. Paraclete def. El Segundo 15-5, 15-13, 15-12. L.A. Baptist def. Big

Segundo 15-5, 15-13, 15-12. L.A. Baptist def. Big  
see VOLLEYBALL RESULTS page 10





## VOLLEYBALL PLAYOFF RESULTS

(Continued from page 9)

Bear 15-11, 15-5, 15-3. Santa Margarita def. Walnut 15-8, 13-15, 15-5, 15-11. Windward def. Capistrano Valley Christian 15-9, 15-8, 15-7. Desert def. Maranatha 11-15, 15-7, 15-8, 11-15, 15-10. St. Bernard def. Whittier Christian 15-7, 15-10, 15-13. Brentwood def. South Hills 15-9, 15-6, 15-5.

**Quarterfinals:** St. Anthony def. Paraclete 15-5, 15-12, 15-3. Santa Margarita def. L.A. Baptist 15-12, 13-15, 15-12, 9-15, 15-9. Desert def. Windward 16-14, 15-7, 15-10. Brentwood def. St. Bernard 15-9, 15-9, 15-13.

**Semifinals:** St. Anthony def. Santa Margarita 15-5, 15-9, 15-12. Brentwood def. Desert 15-12, 15-7, 15-7.

**Finals:** Brentwood def. St. Anthony 9-15, 15-5, 15-13, 15-1.

## SMALL SCHOOLS DIVISION

**Wild Card:** West Valley Christian def. Pioneer Baptist 15-7, 15-10, 15-13. Coast Union def. Shandon 15-2, 12-15, 15-4, 15-9. Boron def. Elsinore Christian 15-4, 5-15, 15-11, 15-8. Christian Center Academy def. Bloomington Christian 15-8, 17-15, 15-3, 15-5. Linfield def. La Sierra Academy 15-9, 15-10, 8-15, 15-5. St. Margaret's def. Calvary Chapel/S.A. 15-10, 15-13, 13-15, 15-13. California Lutheran def. South California Christian 15-10, 12-15, 15-11, 15-12. Mayfield def. First Lutheran 15-8, 15-3, 15-2. Ribet Academy def. Southwestern Academy 10-15, 15-12, 15-6, 15-12. Villanova Prep def. Oak Hill 15-6, 15-14, 15-5.

**First Round:** Chadwick def. Thacher 15-4, 15-2, 15-0. Southeast Lutheran def. North County Christian 15-1, 4-15, 15-6, 15-10. Leffingwell

Christian def. Desert Christian 15-10, 5-15, 15-12, 15-6. Newport Christian def. West Valley Christian 15-6, 15-0, 15-9. Coast Union def. Pilgrim 15-1, 15-0, 16-14. Boron def. Mesrobian 15-7, 16-14, 15-8. Hesperia Christian def. Christian Center Academy 15-6, 15-6, 15-8. Mammoth def. Lee Vining 15-5, 15-10, 15-9. Big Pine def. Linfield 15-5, 15-5, 15-4. St. Margaret's def. Inland Christian 13-15, 16-14, 15-7, 18-16. Baptist Christian def. Hamilton 15-12, 15-7, 7-15, 15-11. Rio Hondo Prep def. California Lutheran 15-3, 15-6, 15-8. Mayfield def. Cate 15-11, 14-16, 15-3, 15-8. West L.A. Baptist def. Wilmington Christian 15-1, 15-4, 15-5. Ribet Academy def. Valley Christian/S.M. 9-15, 15-8, 15-9, 15-13. Mission College Prep def. Villanova Prep 15-8, 18-16, 12-15, 15-4.

**Second Round:** Chadwick def. Southeast Lutheran 15-4, 15-3, 15-1. Newport Christian def. Leffingwell Christian 15-12, 15-13, 15-13. Coast Union def. Boron 15-4, 15-6, 15-5. Mammoth def. Hesperia Christian 15-11, 7-15, 15-9, 15-5. Big Pine def. St. Margaret's 15-3, 15-1, 15-7. Baptist Christian def. Rio Hondo Prep 7-15, 15-11, 7-15, 15-9, 15-10. Mayfield def. West L.A. Baptist 15-0, 15-7, 15-10. Mission College Prep def. Ribet Academy 15-7, 15-7, 15-7.

**Quarterfinals:** Chadwick def. Newport Christian 15-7, 15-3, 15-6. Mammoth def. Coast Union 15-6, 15-1, 15-6. Big Pine def. Baptist Christian 15-2, 15-6, 11-15, 16-14. Mayfield def. Mission College Prep 15-12, 11-15, 15-6, 15-12.

**Semifinals:** Chadwick def. Mammoth 15-13, 6-15, 15-3, 15-13. Mayfield def. Big Pine 15-13, 6-15, 15-3, 15-13.

**Finals:** Chadwick def. Mayfield 15-8, 15-9, 15-3.

CONGRATULATIONS  
CIF/REEBOK STATE  
VOLLEYBALL CHAMPIONS

## DIVISION I

Mira Costa

## DIVISION II

La Habra

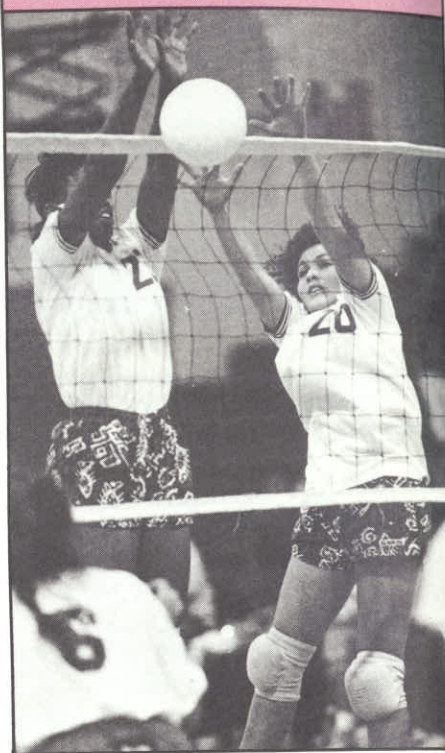


Photo by Larry Files, Highlander Publications

SOUTHERN SECTION CIF/REEBOK  
1989 WATER POLO PLAYOFF RESULTS

## 4-A DIVISION

**First Round:** El Dorado 17, L.B. Poly 1; University 10, Foothill 8; Corona Del Mar 20, Buena Park 2; Wilson/L.B. 11, El Modena 6; Newport Harbor 19, Los Alamitos 4; Sunny Hills 8, Canyon/A. 3; Millikan 12, Esperanza 9; Villa Park 12, Fullerton 6.

**Quarterfinals:** El Dorado 14, University 10; Corona Del Mar 10, Wilson/L.B. 4; Sunny Hills 7, Newport Harbor 6; Villa Park 9, Millikan 6.

**Semifinals:** Corona Del Mar 7, El Dorado 6; Villa Park 8, Sunny Hills 5.

**Finals:** Corona Del Mar 10, Villa Park 9.

## 3-A DIVISION

**First Round:** El Toro 14, Redlands 6; Royal 11, Glendale 6; Santa Monica 9, Edison 7 (OT); Gahr 17, Mater Dei 6; Mission Viejo 15, Orange 8; Wilson/H.H. 12, Pasadena 6; Fontana 7, Indio 6; Harvard 27, Newbury Park 4; Marina 14, Woodbridge 2; Hoover 20, Cerritos 19 (OT); Rowland 25, Thousand Oaks 6; Poly/R. 12, Palm Desert 5; Palos Verdes 11, Fountain Valley 9; Crespi 7, Costa Mesa 6; Palm Springs 21, Nogales 14; Capistrano Valley 16, Downey 3.

**Second Round:** El Toro 13, Royal 7; Gahr 12, Santa Monica 10; Mission Viejo 8, Wilson/H.H. 7; Harvard 10, Fontana 5; Marina 14, Hoover 5; Rowland 12, Poly/R. 5; Palos Verdes 10, Crespi 5; Capistrano Valley 11, Palm Springs 4.

**Quarterfinals:** El Toro 12, Gahr 6; Harvard 9, Mission Viejo 5; Marina 10, Rowland 9; Capis-

trano Valley 13, Palos Verdes 8.

**Semifinals:** El Toro 13, Harvard 3; Capistrano Valley 7, Marina 6.

**Finals:** El Toro 12, Capistrano Valley 8.

## 2-A DIVISION

**Wild Card:** Bell Gardens 17, Whitney 9; Poly/P. 14, Temple City 8; Mira Costa 16, Notre Dame-/S.O. 6; Claremont 11, Workman 3.

**First Round:** South Pasadena 28, Bolsa Grande 5; Bell Gardens 22, Walnut 8; Agoura 11, El Segundo 10; San Luis Obispo 15, Burbank 8; Ventura 15, Poly/P. 1; Alta Loma 22, Brea 8; Kennedy 4, Mira Costa 2; Whittier 28, Chadwick 5; Miraleste 19, Western 10; Alhambra 15, Righetti 11; San Marino 10, Nordhoff 7 (OT); Cabrillo 9, Buena 6; Dos Pueblos 15, Sierra Vista 5; Magnolia 15, Don Lugo 9; Webb 12, La Quinta 11 (OT); La Serna 18, Claremont 4.

**Second Round:** South Pasadena 17, Bell Gardens 8; Agoura 12, San Luis Obispo 11 (OT); Ventura 12, Alta Loma 7; Whittier 13, Kennedy 8; Miraleste 16, Alhambra 14; Cabrillo 8, San Marino 7; Dos Pueblos 8, Magnolia 7; La Serna 19, Webb 5.

**Quarterfinals:** South Pasadena 18, Agoura 9; Whittier 9, Ventura 8; Miraleste 16, Cabrillo 7; La Serna 13, Dos Pueblos 10.

**Semifinals:** South Pasadena 15, Whittier 8; La Serna 10, Miraleste 8.

**Finals:** South Pasadena 14, La Serna 8.

SOUTHERN SECTION CIF/REEBOK/WILSON  
1989 GIRLS TEAM TENNIS PLAYOFF RESULTS

Photo courtesy of Orange Coast Daily Pilot

## 4-A DIVISION

**First Round:** Corona del Mar 17, Beverly Hills 1; Westlake/L.A. 13, Huntington Beach 5; Rolling Hills 10, San Marcos 8; Estancia 12, Edison 6; Miraleste 17, Santa Monica 1; Santa Barbara 9, University 9 (S.B. 79-69); Fountain Valley 11, Marlborough 7; Palos Verdes 13, Dos Pueblos 5.

**Quarterfinals:** Corona del Mar 14, Westlake-/L.A. 4; Estancia 10, Rolling Hills 8; Miraleste 14, Santa Barbara 4; Palos Verdes 15, Fountain Valley 3.

**Semifinals:** Corona del Mar 14, Estancia 4; Miraleste 10, Palos Verdes 8.

**Finals:** Corona del Mar 12, Miraleste 6.

## 3-A DIVISION

**First Round:** Capistrano Valley, bye; Canyon/A. 11, Poly/R. 7; Mission Viejo 11, West Torrance 7; Laguna Hills 16, Villa Park 2; Calabasas 14, Thousand Oaks 4; Alhambra 14, Rubidoux 4; La Canada 11, Arcadia 7; Westlake/WSLK 17, Mira Costa 1; Dana Hills 15, Laguna Beach 3; Redlands 14, Schurr 4; Glendale 11, Simi Valley 7; Agoura 17, South Pasadena 1; South Torrance 13, Woodbridge 5; Foothill 14, San Geronio 4; Camarillo 10, Hart 8; San Marino 13, Crescenta Valley 5.

**Second Round:** Capistrano Valley 13, Canyon/A. 5; Laguna Hills 14, Mission Viejo 4; Calabasas 12, Alhambra 6; Westlake/WSLK 18, La Canada 0; Dana Hills 16, Redlands 2; Agoura 13, Glendale 5; Foothill 9, South Torrance 9 (F. 73-66); San Marino 15, Camarillo 3.

**Quarterfinals:** Capistrano Valley 12, Laguna Hills 6; Calabasas 10, Westlake/WSLK 8; Dana Hills 13, Agoura 5; San Marino 15, Foothill 3.

**Semifinals:** Calabasas 9, Capistrano Valley 9 (C. 68-65); Dana Hills 14, San Marino 4.

**Finals:** Dana Hills 10, Calabasas 8.

## 2-A DIVISION

**First Round:** Diamond Bar 18, Claremont 0; Central 9, Ramona 9 (C. 81-73); Glendora 11, Palm Springs 7; Sonora 13, Loara 5; Fullerton 9, Los Alamitos 9 (F. 75-71); Wilson/L.B. 15, Cerritos 3; Warren 10, Chaminade 8; Mater Dei 17, Poly/L.B. 1; Louisville 14, Nogales 4;

Upland 11, Lakewood 7; Paramount 13, Millikan 5; Katella 12, Sunny Hills 6; Hemet 17, Coachella Valley 1; Rosary 14, Wilson/H.H. 4; Palm Desert 15, West Covina 3; St. Lucy's 17, St. Joseph/LKWD 1.

**Second Round:** Diamond Bar 18, Central 0; Glendora 11, Sonora 7; Fullerton 10, Wilson/L.B. 8; Mater Dei 11, Warren 7; Louisville 14, Upland 4; Katella 13, Paramount 5; Rosary 11, Hemet 7; St. Lucy's 10, Palm Desert 8.

**Quarterfinals:** Diamond Bar 13, Glendora 5; Mater Dei 9, Fullerton 9 (M.D. 74-63); Katella 13, Louisville 5; St. Lucy's 11, Rosary 7.

**Semifinals:** Diamond Bar 13, Mater Dei 5; Katella 10, St. Lucy's 8.

**Finals:** Diamond Bar 14, Katella 4.

## 1-A DIVISION

**Wild Card:** Canyon Springs 12, Brea-Olinda 6; Burroughs/R. 12, Apple Valley 6.

**First Round:** Chadwick 15, La Serna 3; La Mirada 16, Canyon Springs 2; La Quinta 11, La Sierra 7; Valencia 12, Victor Valley 6; Righetti 13, St. Bonaventure 5; Keppel 15, Saugus 3; Arroyo Grande 10, Montebello 8; Cate 18, Oak Park 0; San Luis Obispo 18, Rosemead 0; Mayfield 15, Whittier 3; Poly/P. 12, Quartz Hill 6; La Reina 17, El Monte 1; Western 17, Bellflower 1; Cajon 15, Kennedy 3; Bolsa Grande 10, Glenn 8; Corona 16, Burrough/R. 2.

**Second Round:** Chadwick 15, La Mirada 3; Valencia 13, La Quinta 5; Righetti 10, Keppel 8; Cate 9, Arroyo Grande 9 (C. 75-74); San Luis Obispo 15, Mayfield 3; La Reina 12, Poly/P. 6; Cajon 12, Western 6; Corona 17, Bolsa Grande 1.

**Quarterfinals:** Chadwick 10, Valencia 8; Righetti 12, Cate 6; San Luis Obispo 9, La Reina 9 (SLO 78-76); Corona 14, Cajon 4.

**Semifinals:** Righetti 10, Chadwick 8; Corona 9, San Luis Obispo 9 (C. 70-67).

**Finals:** Corona 10, Righetti 8.

## SMALL SCHOOLS DIVISION

**First Round:** St. Joseph/S.M., bye; Flintridge Sacred Heart 15, Bassett 3; Santa Margarita 12, Workman 6; San Dimas 11, Ontario 7; Bonita

SOUTHERN SECTION  
CIF/REEBOK/WILSON  
1989 TEAM TENNIS  
CHAMPIONS

## 4-A DIVISION

Corona del Mar

## 3-A DIVISION

Dana Hills

## 2-A DIVISION

Diamond Bar

## 1-A DIVISION

Corona

SMALL SCHOOLS DIVISION  
St. Joseph/S.M.

11, Connelly 7; Yucaipa 11, Big Bear 7; Notre Dame/R. 9, Bishop 9 (N.D. advances); Brentwood 10, Cabrillo 8; Morro Bay 16, Campbell Hall 2; South Hills 14, Gladstone 4; Whitney 13, Northview 5; Ramona Convent 18, Mammoth 0; Etiwanda 9, San Jacinto 9 (E. 106-98); Rim of the World 13, Walnut 5; Kern Valley 11, Aquinas 7; Montclair, bye.

**Second Round:** St. Joseph/S.M. 16, Flintridge Sacred Heart 2; Santa Margarita 10, San Dimas 8; Bonita 13, Yucaipa 5; Brentwood 16, Notre Dame/R. 2; Morro Bay 13, South Hills 5; Ramona Convent 11, Whitney 7; Etiwanda 10, Rim of the World 8; Montclair 18, Kern Valley 0.

**Quarterfinals:** St. Joseph/S.M. 17, Santa Margarita 1; Brentwood 9, Bonita 9 (B. 84-75); Morro Bay 10, Ramona Convent 8; Montclair 13, Etiwanda 5.

**Semifinals:** St. Joseph/S.M. 15, Brentwood 3; Morro Bay 10, Montclair 8.

**Finals:** St. Joseph/S.M. 14, Morro Bay 4.

GIRLS CIF-SS 1989  
INDIVIDUAL TENNIS  
PLAYOFF RESULTS

## SINGLES

**Quarterfinals:** Keri Phebus (Corona del Mar) def. Michelle Kong (San Marino) 6-1, 6-0; Page Bartelt (Capistrano Valley) def. Trish Silverman (Agoura) 6-3, 6-1; Nicole Hummel (San Marino) def. Jennifer Wall (Arcadia) 6-1, 6-2; Anne Mall (Dana Hills) def. Molly White (Camarillo) 6-0, 6-0.

**Semifinals:** Keri Phebus def. Page Bartelt 6-1, 6-2; Anne Mall def. Nicole Hummel 6-1, 7-6 (7-0).

**Finals:** Keri Phebus def. Anne Mall 6-1, 3-6, 6-3.

## DOUBLES

**Quarterfinals:** Pospich/Jellen (Calabasas) def. Amesbutr/Amesbutr (Chino) 6-0, 6-1; Imel/Biernat (South Torrance) def. Lotesta/Hackathorn (Palos Verdes) 6-4, 6-3; Kong/Kong (San Marino) def. O'Leary/Pollock (Corona del Mar) 6-1, 6-3; Hanson/Hanson (Miraleste) def. Fouret/Lynch (Dana Hills) 6-4, 6-4.

**Semifinals:** Pospich/Jellen def. Imel/Biernat 6-0, 6-1; Hanson/Hanson def. Kong/Kong 6-4, 6-3.

**Finals:** Pospich/Jellen def. Hanson/Hanson 6-3, 6-2.

SOUTHERN SECTION  
CIF/REEBOK  
1989 WATER POLO  
CHAMPIONS  
4-A DIVISION  
Corona del Mar  
3-A DIVISION  
El Toro  
2-A DIVISION  
South Pasadena



# CIF-SS EXECUTIVE COMMITTEE MINUTES

## Special Session—Dec. 15, 1989

A special meeting of the CIF Southern Section Executive Committee was called to order by President Dr. Tom Jacobson at 9:00 a.m. on Friday, December 15, 1989. All members were present with the exception of Dr. James Fleming.

This special meeting, as approved by the CIF-SS Executive Committee on November 28, 1989, was held for the purpose of counsel, review and evaluation with the appropriate school district representatives that were involved in recent litigation with the Southern Section.

Dr. James E. Johnson, Superintendent, and Mr. Stu Reeder, Principal of La Puente High School; Cynthia Grennan, Superintendent, and Dr. William Wong, Principal of Savanna High School; and Dr. Larry Kemper, Superintendent and Dr. Gary Ernst, Principal of Huntington Beach High School, appeared before the Executive Committee to review background information and an update to the Committee with reference to their respective schools' involvement in litigation involving the Southern Section football playoffs. Each school presented background information and answered questions of the Executive Committee as to their procedures concerning eligibility checks, involvement of booster organizations and positions taken by school boards and district and school administration in the overall process of litigation.

Following the hearings, the Executive Committee recommended the following:

- (1) The Southern Section and the State CIF, in concert with attorney Andy Patterson, review the current appeals procedure with the determination to be made who has the right to appeal in that this is a school organization, and booster clubs should not have status or the right to sue the organization as they have no role within the present structure of the CIF.
- (2) The Office develop guidelines for future review that would put in place provisions by which leagues would be involved in the certification of eligibility for members of their respective schools.
- (3) That league constitutions be reviewed to determine if language may be in conflict with State CIF and Southern Section Rules and Regulations.
- (4) That the Office develop for the 1990-91 school year an orientation program much like the CIF-SS Symposium for school administrators

and booster club presidents.

(5) Wider use of transfer eligibility cards, with consideration being given for mandatory use by member schools.

(6) Additional review of both State and Southern Section rules and regulations by the CIF legal counsel. This would include a review of the State and Southern Section legal position with reference to litigation by booster clubs and others, with a report forthcoming from the State CIF Commissioner to representatives of the Southern Section Council.

The CIF-SS Executive Committee commended each of the schools for their

### ATHLETIC DIRECTORS

(Continued from page 3)

tic director would look for in a potential coach. These qualities, although attitudinal in nature, are truly developed skills and can be learned. Each individual must recognize these qualities in order to operate at full efficiency. Ziglar concluded by stating that your past is not as important as the way you see your future. We have choices to make. If we plan, prepare and execute, the end result will be a win.

Between sessions, a wealth of information and display was available in the Exhibit Hall. More than 130 vendors participated this year, unveiling a variety of innovative merchandise and sport technology.

Gerald A. Purdy, President of the National Association of Secondary School Principals, was the featured speaker at the Second General Session on Monday morning. His presentation, "There is No Bottom Line," discussed the athletic directors' role in the lives of young people. The inherent need for activity is indicative of a successful educational atmosphere. According to Purdy we are the advocates of kids. We produce leaders, that is our business. In order to expand our horizons we must take risks. "There is no bottom line!"

Interspersed between the motivating general sessions were the workshops, mini sessions and seminars, the thought provoking essence of the conference. A variety of topics included Sportsmanship and Coaching Ethics, Effective Contest Administration, Promoting Community Support, Developing Pride in Your Support Staff and Justifying Your Athletic Program. Of special interest were two seminars: one covering litigation and another with impressive information on anabolic steroids.

The third and final general session

comments and willingness to share the sequence of events which led to the recent litigation in the hope that preventative measures can be taken for the future to protect the integrity of the rules and regulations of the CIF Southern Section.

There being no further business to come to the attention of the Committee, the meeting was adjourned at 2:40 p.m.

Submitted by  
DEAN CROWLEY,  
ASSOCIATE COMMISSIONER

Approved by  
STAN THOMAS,  
COMMISSIONER OF ATHLETICS

featured Dr. Thomas Tutko the renowned sports psychologist from San Jose State University. Dr. Tutko presented a humorous approach to the realistic aspect of sport. Through his personal experiences, he promoted a belief that character is built and developed through sport and the athletic administrator is instrumentally involved in that process.

Throughout the course of the conference the NIAAA conducted a variety of sectional, delegatorial, leadership and standing committee meetings attended by representatives selected from each state. As a result of this leadership the membership in the NIAAA has grown to nearly 5,000. Wayne Taylor, President of the NIAAA contends that the purpose of this organization is contained in the four P's:

- 1) **Promoting** the professional growth and image of scholastic athletic administrators;
- 2) **Promoting** affiliation of state and national athletic administrator organizations;
- 3) **Providing** an efficient system for the exchange of ideas between state organizations;
- 4) **Preserving** the educational value of athletics and its placement in today's school curricula.

If participation truly is the key to professional growth, then no finer positive experience can be attained than at this conference.

The flight home finds the athletic director most refreshed, better motivated and willing to tackle the everyday concerns in athletic administration!

*Sheri Ross, now in her third year as the Girls Athletic Directors' Representative to the CIF-SS Executive Committee, is also President of the California State Athletic Directors Association and a member of the National Athletic Directors Advisory Committee.*



### Publication Order Form

| Quantity | Item                            | Price Enclosed |
|----------|---------------------------------|----------------|
|          | <b>Baseball</b>                 |                |
|          | rule book                       | \$3.50         |
|          | case book                       | \$3.50         |
|          | CIF-SS program                  | \$4.00         |
|          | Press Guide/Master Schedule     | \$10.00        |
|          | <b>Basketball</b>               |                |
|          | rule book                       | \$3.50         |
|          | case book                       | \$3.50         |
|          | simplified rule                 | \$3.50         |
|          | CIF-SS program                  | \$4.00         |
|          | Press Guide/Master Schedule     | \$12.50        |
|          | <b>Football</b>                 |                |
|          | rule book                       | \$3.50         |
|          | case book                       | \$3.50         |
|          | simplified rule                 | \$3.50         |
|          | CIF-SS program                  | \$4.00         |
|          | Press Guide/Master Schedule     | \$10.00        |
|          | <b>Gymnastics</b>               |                |
|          | Boys rules                      | \$4.50         |
|          | Girls rules                     | \$4.50         |
|          | <b>Field Hockey</b>             |                |
|          | rule book                       | \$3.50         |
|          | <b>Soccer</b>                   |                |
|          | rule book                       | \$3.50         |
|          | CIF-SS program                  | \$3.00         |
|          | <b>Softball</b>                 |                |
|          | rule book                       | \$3.50         |
|          | CIF-SS program                  | \$4.00         |
|          | <b>Swimming/Water Polo</b>      |                |
|          | rule book                       | \$3.50         |
|          | CIF-SS program                  | \$3.00         |
|          | <b>Track &amp; Field</b>        |                |
|          | rule book                       | \$3.50         |
|          | CIF-SS program                  | \$4.00         |
|          | <b>Volleyball</b>               |                |
|          | rule book                       | \$3.50         |
|          | Boys' program                   | \$3.00         |
|          | Girls' program                  | \$3.00         |
|          | <b>Wrestling</b>                |                |
|          | rule book                       | \$3.50         |
|          | CIF-SS program                  | \$3.00         |
|          | CIF-SS Blue Book/Directory      | \$12.00        |
|          | CIF-SS Bulletin (6 Editions)    | \$10.00        |
|          | <b>Total Amount Enclosed \$</b> |                |

All Prices include  
Postage and Handling  
Mail To:

Name \_\_\_\_\_  
Address \_\_\_\_\_  
City \_\_\_\_\_  
Zip \_\_\_\_\_

Return to:  
Publication Order  
CIF-SS, P.O. Box 488  
Cerritos, CA 90702

### COMMISSIONER'S CORNER

(Continued from page 2)

—La Puente High School litigated the CIF Southern Section on Wednesday, November 15, 1989. The Superior Court in West Covina heard the case with the judge listening to all evidence and ruled strongly in favor of the Southern Section, denying an eligibility transfer request to be overturned on behalf of La Puente High School.

—Savanna High School had played a fifth-year student and forfeited their football games. This issue was litigated at the Orange County Superior Court on Wednesday, November 15. The Court Commissioner deferred the matter until the following day.

—On Thursday, the California Appellate Court's decision regarding Huntington Beach was given, ruling in favor of the CIF-SS. The Savanna case was also decided, following the high court decision, by the Court Commissioner.

—At 3:00 p.m., Friday, November 17, 1989 we were notified that a parent from Huntington Beach was litigating at the Federal Court in Orange County based on an alleged violation of civil rights on behalf of his son relating to the fact that Huntington Beach High School's football team was not allowed to participate in the playoffs. At 5:00 p.m. the Southern Section staff and attorney were in Federal Court before another judge, listening to evidence. The Federal Judge ruled in favor of the Southern Section and at 6:30 p.m. we were free of litigation for that particular week.

—The CIF Southern Section Executive Committee convened November 28, 1989 for its regular meeting and unanimously voted to invite superintendents, and principals of each school involved in litigation to a special meeting to determine why and how this took place. (see special meeting minutes, page 12.)

—Following the semifinal games, it was brought to the attention of the office that an official may have erred in a decision which provided an additional down at the conclusion of the Santa Barbara-Canyon of Canyon Country game. The Booster Club of Canyon High School demanded the office overturn the official's decision. Several meetings took place in order to restore a degree of sanity, as our

rules are interpreted. The Board of Education of the Wm. S. Hart Union High School District held a meeting with more than 300 persons in attendance, requesting the Board to support the district in litigating this issue with the CIF Southern Section. The meeting concluded at 12:30 a.m. with a 4-1 vote to deny participation by the school district as it related to their request.

Special commendation to Superintendent Clyde Smyth, Principal Bill White and booster club parents who understood the ramifications of this litigation.

—The last week of the football championship season, Monday, December 4, at our Championship Press Luncheon, I was given legal notice from Mission Viejo High School that El Toro High School had committed a violation of our rules the Sunday prior to the final game. This information was reviewed by the school district office, and principals with a decision being made to remove the assistant coach for a period of one year for meeting with a player on Sunday to review game films. The Booster Club of Mission Viejo High School threatened to litigate this decision.

Each of these cases took considerable time, effort and funding to resolve. The question I am asking of our Section, to be discussed at the January Council meeting is — What do principals consider appropriate in the area of due process for the Southern Section during playoff periods?

Two additional Executive Committee hearings in January have been scheduled because athletes physically attacked game officials. The chances of the Section being taken to court over these issues are high, simply because parents today are not willing to accept the decision of schools and/or the Executive Committee.

Our organization has reached a state of high risk, extensive costs and a new mind-set on the part of parents and some school administrators relating to litigation. Our member schools, collectively, must provide this office with direction in this area. The burning questions are: Where will continued litigation lead our association, and what should our policy and/or actions be when it happens?





## SPORTS INJURY MANUAL AVAILABLE FOR COACHES

Last year, over 15,000 copies of the PPSI Sports Injury Guide were distributed to coaches and trainers as an important aid in reducing the impact of sports injuries.

The Sports Injury Manual is written in laymen's terms and contains the "do's" and "don'ts" of immediate, on-the-field treatment for the 21 most common injuries high school athletes suffer. The pocket-sized book is intended as a permanent reference guide for coaches and student trainers to be carried to practice and to games.

The Institute for Public and Private Sector Initiatives (PPSI), a non-profit foundation that publishes the book, recommends that every Varsity, J.V. and Freshmen coach have and use a copy of the Manual. It is written by some of the most highly regarded professionals in sports medicine.

Individual Copies \$6.95 plus 50 cents shipping.

Bulk rates are available: Please contact the PPSI Office at (602) 884-2693 for further information. To order send a check payable to PPSI to:

PPSI Sports Injury Manual  
1815 W. 1st Ave.  
Suite 146  
Mesa, AZ 85202

## ATTENTION WRESTLING COACHES

### IMPORTANT REMINDER

A wrestler becomes ineligible for further competition during the season, if prior to the league championship tournament (if any), the athlete accumulates more than **18 competition points** according to the following schedule:

- Participation in a dual meet at any level - 1 point
- Participation in a tournament at any level - 2 points

Any competition between two schools shall constitute a dual meet; any competition with three or more schools shall constitute a tournament. **It is incumbent upon COACHES to keep tabulation of each individual's total number of competitive points throughout the season.**

## Subscription Order Form



Here's your chance to keep abreast of current CIF-SS news in high school athletics. A "subscription department" is now open so that all sports-minded groups plus interested community people may now have the option of receiving a copy of this publication.

*NOTE: Complimentary copies of the CIF-SS Bulletin will continue to be sent to member schools.*

1. Subscriptions are now on sale. Issued 6 times yearly for only \$10.00.
2. Copies will be sent directly to the address printed on the order form.
3. Each order must include a check or money order for the correct amount made out to "CIF-SS BULLETIN".

### CIF-SS BULLETIN ORDER FORM

Please Process My Order for the 1989-90 CIF-SS BULLETIN.

☐ Check for \$10.00 enclosed

NAME \_\_\_\_\_

ADDRESS \_\_\_\_\_

CITY \_\_\_\_\_

STATE \_\_\_\_\_

ZIP \_\_\_\_\_

( )  
PHONE \_\_\_\_\_

MAIL TO "CIF-SS BULLETIN"  
P.O. BOX 488, CERRITOS, CA 90702

## NATIONAL FEDERATION 1990 BASEBALL RULE REVISIONS

In addition to California's new pitching limitation rule (see page 5, column 1), CIF-SS baseball coaches should also be aware of alterations to the 1990 National Federation Rule Book.

To offer another option to traditional wooden bats, the National Federation Baseball Rules Committee has approved the use of graphite composite bats for high school baseball.

In its June 13-14 meeting in Kansas City, the committee approved graphite bats beginning with the 1990 season. Bats that incorporate other materials along with graphite, such as ceramic or Kevlar, also are legal.

The committee also altered Rule 3-4-1 dealing with removal of pitchers. Previously, a pitcher who was replaced after a conference on the field could return to pitch later. Now, after three charged conferences in a seven-inning game or for any charged conference in excess of one in each extra inning, the pitcher must be removed for the duration of the game.

In addition, a team will not be charged a conference if, prior to accumulating three charged conferences in

seven innings or less, the pitcher is removed.

In a safety-related change, infield practice during a charged conference or between innings is now prohibited. To avoid the risk of injury, infield practice only will be allowed before the game.

In other changes, Rule 4-4-1-f was changed to help those teams that do not have a lot of reserves. Henceforth, the most recent batter not on base will be allowed to run for a player who becomes injured, ill or ejected after being awarded a base or after reaching base. The substitute is allowed to run until he is put out, scores or the half inning ends with an out being called each time he is to bat.

Rule 7-3-5 was made more stringent to allow two outs be called in a catcher-interference situation. If, in the umpire's judgment, the catcher could have thrown out the runner had not the batter interfered, the umpire now could call a second out.

Three pitching-rule changes were made by the committee. Rule 6-1-5 was passed last year and goes into effect this coming season. It will

require all state associations to have a pitching-limitation rule. It is intended to afford pitchers a reasonable rest period between appearances and prevent overuse of the arm.

A change in Rule 6-2-2c now will allow starting pitchers eight warm-up throws before the game instead of five. Also, references to the types of illegally defaced balls that a pitcher might throw were eliminated from the rules.

Three other changes were made by the rules committee. The 18-inch encircling mark on bats no longer will be required. The rule originally was adopted as an aid to umpires in determining if a foreign substance was above the legal limit on the bat.

In Rule 2-8-1, the reference to an imaginary line between first and third bases was deleted. Rule 2-12-4 was clarified to define the reinstatement of a force situation. Now, when a runner retreats beyond the base he was forced to advance to, the force is reinstated.

Baseball is the fourth-most popular sport for boys at the high school level. A total of 407,630 boys compete in 13,589 high schools throughout the United States.

### RULE REVIEW

*(Continued from page 3)*

In case you hadn't heard, the California Interscholastic Federation's Southern Section changed Huntington Beach High's record from 8-2 to 0-10 after the school had played 17-year-old tackle David Roman. Roman was ineligible because he was living with his brother instead of his mother since moving from Maryland. Rules require that an athlete live with a parent or legal guardian. School officials weren't aware of the problem until it was too late.

The CIF-SS yanked the team out of the Division I playoffs and, instead of being apologetic or remorseful about the situation, the school's boosters took the matter to court.

Never mind that Huntington Beach knew the rules and that Roman and his mother had signed a form with the rules on them, the boosters did what too many people do these days: they sued.

What's even worse was that, for a couple of days, they got away with it. A judge in Santa Ana on Tuesday ruled in Huntington Beach's favor. But Thursday, the 4th District Court of Appeals overturned the ruling, siding with the CIF.

Sanity has prevailed.

I've said it before and I'll say it again: When a school, a team or an individual decides to belong to an organization like the CIF, NCAA or a professional league, they agree to abide by the rules. Not only that, in every case, it is the schools and teams that make the rules in the first place.

What do you think, some villain comes in holds high schools hostage, calls himself the California Interscholastic Federation, and forces these poor waifs to play by his rules or he'll foreclose on the mortgage??

School representatives make up the CIF-SS Council which makes up the rules. It isn't a hostile takeover.

This is not the first time this has happened and it won't be the last (in fact, Savanna and La Puente high schools were also turned down in similar cases this week). And every time it happens, the same sanctimonious cry goes up from the boosters: "It's not fair to punish the entire team for the actions of one player."

Of course it is.

As a colleague of mine pointed out the other day, that's what happens to team sports all the time. Would these people also say, "It's not fair to take the football away from our entire team

just because one player fumbled it over to the other side?"

Of course not, because they know the rules.

The people who are victimized by things like this are not just players, coaches, administrators or boosters at the school involved, but also those at other schools. Fontana High didn't really know until Thursday whether it was going to play Huntington Beach or Fountain Valley. And what about Fountain Valley? It practiced all week, not knowing until Thursday if it would even play.

"Maybe what's suffering is respect for the rules," Associate Justice Edward J. Wallin told the Huntington Beach boosters Thursday. "What you're really attacking is the whole CIF book of rules, aren't you?"

This mentality of going to court any time the rules don't go our way is childish. It's like a spoiled child holding his breath. And don't think it won't one day happen right here in River City.

Wallin: "Pretty soon, a coach will be starting with a good assistant, a good trainer, and a good lawyer who can work fast and will be more important than a fast tailback."



## SOUTHERN SECTION CIF CORPORATE SPONSORS:

### Supporting Tomorrow's Stars Today

**REEBOK:** Major State-Wide CIF Contributing Sponsor.

**COCA COLA:** Major State-Wide CIF Supporting Sponsor.

**CALIFORNIA ANGELS:** Co-Sponsors of the Baseball/Softball Championships and Awards Program.

**CONLIN BROS. SPORTING GOODS:** Official Sporting Goods Team Dealer of the CIF-SS.

**FORD MOTOR COMPANY:** Co-Sponsor of the Basketball Championships and Academic Awards Program.

**GATORADE:** Official Thirst Quencher of the CIF-SS.

**HERFF JONES:** Official Awards Company of the CIF-SS.

**JACK IN THE BOX:** Co-Sponsors of the Football Championships.

**SUNNY DELIGHT:** Co-Sponsors of the Soccer Championships.

**TURBO SPORTS NUTRITION:** Co-Sponsors of the Track Championships.

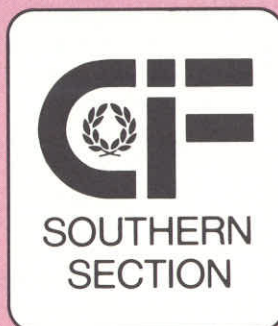
**WILSON SPORTING GOODS COMPANY:** Official Ball Company of the CIF-SS.

# Reebok®

## MAJOR STATE WIDE CIF CONTRIBUTING SPONSOR



**Conlin Bros.**  
*Sporting Goods*



**HERFF JONES**  
... a tradition of excellence

**Wilson**

**TURBO**  
NUTRITION



**Sunny  
Delight**