



CIF-SS BULLETIN



VOL. 50, NO. 3

JANUARY 1989

BRAD GATES TO KEYNOTE 1988-89 CIF-SS ATHLETIC SYMPOSIUM

The CIF Southern Section will conduct its tenth annual Athletic Administrators Symposium at the Sequoia Athletic Club on Tuesday, February 7, 1989.

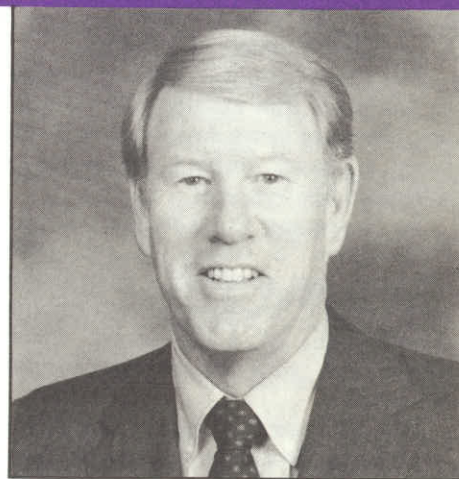
"This year's symposium will be dynamic, informative and pertinent to today's issues," noted CIF-SS Administrator Karen Hellyer, Coordinator of the event. "The program will be a tremendous source of information, ideas, and new directions for anyone involved with high school activities."

Orange County Sheriff Brad Gates will be the Keynote Speaker for the event. Sheriff Gates will share his "Blueprint for Prevention: - A Plan for a War on Drug Abuse". The Sheriff-Coroner is elected to serve all the people of Orange County and specifically to support city law enforcement through the maintenance of a central jail, a criminalistics laboratory, a coroner facility, a regional training facility, Regional Narcotics Suppres-

sion Program, and other ancillary support services. He provides direct police protection to over 384,800 people living in the incorporated areas of the County in four police service contract cities.

Topical workshops for the Symposium will include presentation by the Drug Use is Life Abuse Foundation, National Federation Target Interactive Project, the Power of Listening, Innovative District-wide Anti-Drug Program, Sports Media, Eligibility, Steroids, Game Management, Officials, Small Schools, School Pilot Program of Drug Testing, Principals Managing their Athletic Programs, and more.

For registration and further information concerning the 1989 CIF Southern Section Athletic Administrators Symposium, contact CIF-SS Office at (213) 860-2414 or (714) 826-5390.



Orange County Sheriff-Coroner
Brad Gates

SYMPOSIUM SCHEDULE Sequoia Athletic Club Buena Park Tuesday, Feb. 7, 1989

7:30 - 8:00	Registration
8:00 - 8:10	Welcome - Commissioner Stan Thomas
8:10 - 8:55	Speaker - Sheriff Brad Gates
9:00 - 9:50	Seminar Session I
9:55 - 10:45	Seminar Session II
10:45 - 11:20	Vendors
11:20 - 12:10	Seminar Session III

REEBOK & COCA-COLA MAJOR STATEWIDE SPONSORS JACK-IN-THE-BOX, GATORADE CONTINUE SUPPORT



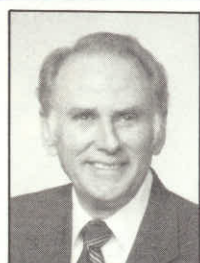
Jack-in-the-Box Restaurants is continuing its sponsorship with the Southern Section for a third consecutive year. Jack-in-the-Box, the official fast food restaurant of the CIF-SS, is the co-sponsor of the Southern Section CIF/Reebok/Jack-in-the-Box Football Championships. As part of its sponsorship, the fast food chain provides a special discounted offer on the ticket-backs of all Southern Section football and basketball playoff and champion-

ship contests. Additionally, the company agreed to purchase advertising time on Prime Ticket which helped assure the broadcast of the Division I and Division IV football championship contest.

"Jack-in-the-Box Restaurants are proud to have the opportunity to continue to support the CIF Southern Section in its endeavors to provide an arena for excellence," said Richard J. Wenz, Regional Marketing Manager, Jack-in-the-Box. "Today's youth are
see CORPORATE page 3

*Serving High School Athletics
Since 1913*

COMMISSIONER'S CORNER



**CIF-SS, AAF
TO FORM
WORKING
PARTNERSHIP**

**By Stan Thomas
Commissioner of Athletics**

The CIF Southern Section is pleased to announce that exciting and productive plans are being developed that will have a direct impact on member schools in the new year.

To be specific, the Amateur Athletic Foundation, a legacy of the 1984 Olympics, has approved a partnership with the CIF Southern Section for the development of a temporary coach permanent staff coach educational program.

This program will have a significant impact on Southern California high school athletics. It is the intention of the Southern Section to share with the Los Angeles and San Diego Sections the product of this task.

Several meetings have taken place between Ms. Judith Pinero, Vice President, Grants and Aid Programs; Keith Cruickshank, Program Director; Skip Stolley, AAF Liaison to the Southern Section and Les Billinger, Liaison for the CIF Southern Section to the AAF. These people have demonstrated a sincere desire to cooperate and develop, jointly, a program of continuing education for high school coaches in all sports.

The first sport to be undertaken in 1989-90 will be soccer. This decision was based upon a needs assessment taken last year by the Southern Section Office from all schools requesting information as to how many walk-on coaches were on their current staff. The sport of soccer indicated a large number of walk-on coaches who could benefit from this training.

After preliminary discussion, Mr. Billinger and I identified data reflecting, on an initial basis, the soccer program for approximately 75 schools in the metropolitan area of Los Angeles and Orange County. These 75 schools represent 12 leagues in 24 school districts. The program will service approximately 130 men and

see COMMISSIONER'S CORNER page 5

EXECUTIVE COMMITTEE MINUTES

October 18, 1988

The October meeting of the CIF-SS Executive Committee was called to order by Chairman Bruce Keuning at 9:35 a.m. on Tuesday, October 18, 1988 at the CIF-SS Office. All members were present with the exception of Mike Moropoulos.

1. PRESIDENT'S UPDATE - President Bruce Keuning welcomed Executive Committee members to the first meeting of the 1988-89 school year and extended a special welcome to new Executive Committee member Sr. Marion Kikukawa, principal of St. Anthony High School, who was attending her first Executive Committee since her appointment to fill the vacancy of Fr. Charles Motosko.

2. COMMISSIONER'S UPDATE - Commissioner Stan Thomas reviewed with the Committee the Reebok anti-drug posters, on-going discussions with the Amateur Athletic Foundation with reference to the training of temporary coaches, and the Orange County anti-drug program initiated by Sheriff Brad Gates. Additionally, he updated the Committee on the increase in the number of 214 forms (transfer eligibility) processed by the Office which indicates a positive sign that member schools are doing a better job in tracking transfer students and using the transfer eligibility cards.

3. GIRLS A.D. UPDATE - Sheri Ross, A.D. Representative, noted the many positive comments received from athletic directors in Orange County with reference to the Council Capsule, a positive means of communication. In addition, she alerted the group to the upcoming National Red Ribbon Week "Say No To Drugs", and the good work being done by the officials' liaison in Orange County, Speed Castillo.

4. SUPERINTENDENT'S UPDATE - Cynthia Grennan, Superintendents' representative, stressed the significance of the Superintendents/Board Members Symposium set for October 27 at the Sequoia Athletic Club in Buena Park. She also stressed the importance of school districts implementing the temporary Coach Regulations which are now State law. Any questions regarding the implementation of these recommendations could be directed to Dr. Robert Packer, Superintendent, Duarte Unified School District, or Ms. Cynthia Grennan, Superintendent, Anaheim Union High School District.

5. TREASURER'S UPDATE - Dr. Gary Smidderks provided a final review of the 1987-88 financial report and an update on the current 1988-89 working budget.

6. STATE REPORT - Dr. Robert Packer, President-elect of the State Federated Council, reviewed the School Properties contract discussions which will be reviewed at the State Federated Council meeting in late October, with a possible vote set for the January, 1989 meeting of the State Federated Council.

7. SECTION 7-8 MEETING REPORT - Bruce Keuning reported on the National Federated Section 7-8 meeting as it related to issues facing State high school athletic associations. These included 8 semester rules; participation by 19-year-olds; penalties for ineligibility; fine systems for rule violations; litigation; academic requirements; event security; girls' participation in contact sports and governance.

8. LEGAL UPDATE - Attorney Andy Patterson updated the Committee on current areas of litigation to include the Holcomb and Shirk cases. see EXECUTIVE COMMITTEE page 5

California Interscholastic Federation Southern Section

11011 Artesia Blvd. (90701) - P.O. Box 488 (90702)
Cerritos, CA
(213) 860-2414 - (714) 826-5390

OFFICERS

Mr. Bruce Keuning, Superintendent
Bellflower Christian Schools, President

Dr. Tom Jacobson, Principal,
Corona del Mar High School, President-Elect

Dr. Robert M. Packer, Superintendent,
Duarte Unified, Past-President

Dr. Gary Smidderks, Superintendent-Principal,
Los Angeles Baptist High School, Treasurer

Mr. Stan Thomas, Commissioner of Athletics

BULLETIN EDITOR

Mr. Scott Cathcart
CIF-SS Director of Media and Public Relations

Bulletin Published 6 Times Yearly
By CIF-Southern Section

CORPORATE

JACK-IN-THE-BOX AND GATORADE CONTINUE SPONSORSHIP PACTS

(Continued from page 1)

tomorrow's leaders and we look forward to sponsoring exceptional athletic competitions for them," added Wenz.

GATORADE, the official thirst quencher of the Southern Section, is continuing its long-time CIF-SS relationship with the signing of a new five-year contract. GATORADE has agreed to continue its popular donation of coolers and products to the participating teams in Southern Section championship competition.

"GATORADE is quite proud of its long-time association with the CIF Southern Section and we are pleased to continue our support of their fine efforts," said William D. Schmidt, Vice President of Sports Marketing for the Quaker Oats Company, maker of GATORADE Thirst Quencher. "The

CIF Southern Section, whose activities benefit so many young athletes each year, is an important association for GATORADE. We are pleased that GATORADE's support helps the CIF Southern Section continue to provide the youth of California with the quality sports opportunities they deserve," added Schmidt.

Jack-in-the-Box and GATORADE are joined by state-wide sponsors Reebok and Coca Cola in addition to section-sponsors: Army National Guard, California Angels, Conlin Bros. Sporting Goods, Ford Motor Company, Herff Jones, Round Table Pizza, Sunny Delight and the Wilson Sporting Goods Company in supporting high school athletics through the Southern Section's corporate support program.

ATHLETIC SAFETY COMMITTEE URGES EMPLOYMENT OF TRAINERS

First-aid, safety and preparedness for injury have long been a major concern for those involved in high school athletic programs. Most school board members, administrators, athletic directors, coaches and parents would agree that employment of a full-time athletic trainer at each school would be advantageous.

In its meeting of Dec. 15, the CIF Southern Section Athletic Safety Committee stressed an increasing need for member schools to employ a full-time trainer.

The committee is composed of Chairpersons Bob Hahn, Vice Principal-Athletic Director of Redlands High School; Bill Chambers of Fullerton Junior College, a past president of the National Athletic Trainers Association (NATA); Donn Clickard, Athletic Director of Atascadero High School; Jim Clover, Coordinator of the Sport Physiology of Orthopedic Rehabilitation Clinic (SPORT) of Riverside; Sheila King of the National Athletic Health Institute (NAHI); Robert Nero, Principal of Bassett High School; Dr. Lewis Yocum of NAHI; and CIF-SS Administrator Bill Clark.

"The number one responsibility of our job as coaches and athletic admin-

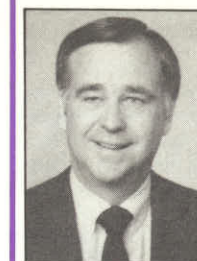
istrators is not to win contests, but to take care both physically and mentally of the student-athletes for whom we serve," points out Clickard. "In order to do that, beyond having coaches prepared to deal with first-aid and injury situations, a school should have a full-time trainer on staff to provide services to participants in all sports at all levels."

As previously noted, most involved with high school athletics would agree that having a full-time trainer would be of tremendous benefit. The question is, where does a school turn to find a certified athletic trainer and how can his or her position be funded?

"There are many credentialed teachers out there who are also certified athletic trainers," says Clark. "With the increasing demand for new teachers, our committee suggests that schools look seriously into the possibility of hiring a 'teacher-trainer' as a member of its full-time staff."

Another major concern is litigation over liability, which unfortunately, is a persistent reality in the 1980's. In response, the concept of employing full-time trainers is sound advice for all school districts.

see TRAINERS page 9



**By
Dean Crowley
Associate
Commissioner
of Athletics**

EVENT SANCTIONING REMAINS A CONCERN

Though time and again the CIF Southern Section Office has pointed out the importance and necessity of following Blue Book procedures with regard to sanctioned events, problems in this area continue to arise. Coaches and administrators must be aware that competition involving more than two schools will constitute the need for event sanctioning.

With particular attention to the sports of basketball, wrestling, baseball, softball, volleyball and track and field, in which tournament and multi-school competition has become increasingly popular, it is imperative host schools follow CIF-SS guidelines. The sanctioned event guidelines are stated in Article 7, Rules 700-713 and can be found on pages 62-65 in the Blue Book.

Just this basketball season, a number of member schools found themselves with scheduling conflicts due to the fact they were entered into tournaments with overlapping dates, or had advanced into a tournament contest that conflicted with a single non-league game. Schools are obliged to fulfill contractual commitments with other member schools and must foresee potential conflicts when developing their schedules.

Another all-too-common oversight involves competition with out-of-state schools or teams from out of the country. Already this basketball season, teams traveling all the way from New Zealand and Canada were not allowed to compete in tournaments in which they were invited, because the host schools did not abide by event sanctioning guidelines. In these instances, joint sanctioning must be obtained from not only the CIF Southern Section Office, but the amateur governing body for the specific sport, the National Federation and the State Office as well. This rule also holds in cases of single game competition for any teams coming from outside the U.S.

see RULE REVIEW page 11

CIF-SS EXECUTIVE COMMITTEE MINUTES

December 1, 1988

The December meeting of the CIF-SS Executive Committee was called to order by President-elect Dr. Tom Jacobson at 1:05 p.m. on Thursday, December 1, 1988 at the CIF Southern Section Office. All members were present with the exception of Bruce Keuning.

1. MINUTES - It was moved, seconded and passed to approve the minutes of the CIF-SS Executive Committee meeting of October 18, 1988.

2. PRESIDENT'S UPDATE - In the absence of Bruce Keuning, Dr. Jacobson reported on the many fine comments received with reference to the Superintendents' Symposium. Additionally, he commended Cynthia Grennan on her nomination (representing the State of California) as one of the outstanding superintendents in the U.S. This nomination for national recognition was submitted by the American Association of School Administrators.

3. COMMISSIONER'S UPDATE - Commissioner Stan Thomas reviewed with the Committee the January Executive Committee meeting, the Orange County Drug Prevention Program, and work being done by the Officials Fees Committee. He also updated the Committee on the Amateur Athletic Foundation Coaching Certification Program, the proposed Toyota Interscholastic Golf Program, and state championship playoff activities.

4. BOYS' A.D. UPDATE - Mike Moropoulos, Boys' A.D. Representative, discussed with the Committee concerns with reference to the coaching certification issue and problems that have been created due to the fact that the State Department of Education has as of this date not forwarded to school districts the regulations for implementation.

5. GIRLS' A.D. UPDATE - Sheri Ross, Girls' A.D. Representative, updated the Committee on the State Girls' Volleyball Championships and the National Athletic Directors Conference scheduled to be held December 11-14, 1988 in Las Vegas, Nevada.

6. SUPERINTENDENTS' UPDATE - Cynthia Grennan, Superintendents representative, commended the staff on the success of the Superintendents Symposium and commented on the Title V Regulations (coaching certification) which are still at the State Department of Education in Sacramento.

7. TREASURER'S UPDATE - Dr. Gary Smidderks, treasurer, provided an update of the 1988-89 working budget and a projected income from the fall playoff activities. Additionally, concerns were expressed relative to 23 schools still delinquent in payment of dues for the 1988-89 school year. Following discussion, it was moved, seconded and passed to drop those delinquent schools, should their dues not be paid by January 15, 1989.

8. STATE REPORT - Dr. Robert Packer, President-elect of the State Federated Council, reviewed the School Properties contract discussions which will be an action item at the January, 1989 meeting of the State Federated Council. Additionally, he reviewed the basketball coaching box, the State championship transportation allowance and the All Star Rule 900-904, all of which were passed at the October State Federated Council meeting.

Items to be voted on at the January 27-28 State Federated Council meeting included State CIF coaching certification program, School Proper-

ties contract licensing agreement, girls' golf tees, California State Athletic Directors' request for financial assistance, proposal regarding financial distribution of funds generated by School Properties, and a request for waiver of rule 308. It should be noted that the Southern Section Council, at its meeting of January 19, 1989, must vote on these items in order to give direction to Southern Section representative to the State Federated Council.

9. LEGAL UPDATE - Attorney Andy Patterson updated the Committee on current areas of litigation to include the Holcomb, Shirk and De La Cerda cases.

10. SAN GABRIEL VALLEY RELEAGUING - Associate Commissioner Dean Crowley updated the Committee with regard to the final meeting and adoption of a proposed plan with reference to the disbanding of the current San Gabriel Valley Releaguings Area. After a meeting of the CIF-SS Releaguings Committee held on Tuesday, November 19, 1988, the San Gabriel Valley area schools were disbursed to the following areas:

COASTAL: Cerritos, Dominguez, Downey, Gahr, Lynwood, Paramount, Warren.
FOOTHILL: Artesia, Bellflower, Bell Gardens, California, El Rancho, Glenn, La Mirada, La Serna, Mayfair, Montebello, Norwalk, Poiner, Santa Fe, Whittier.

This configuration will be presented for adoption to the CIF-SS Executive Committee at their meeting of January 14, 1989.

11. OFFICIALS ASSOCIATION UPDATE - Administrator Bill Clark reviewed with the Committee the Officials Association assigning procedures that will be completed in all areas of the Southern Section by the end of this school year.

12. MUIR HIGH SCHOOL - Associate Commissioner Dean Crowley reported on the positive meeting held with the Principal and Athletic Director at Muir High School. It should be noted that a mid-year report, as directed by the Executive Committee, will be forth coming from John Muir High School.

13. SACRED HEART OF MARY HIGH SCHOOL - Principal Sr. Anne Bellan met with Commissioner Stan Thomas and President Bruce Keuning to review in total Sacred Heart of Mary's position with reference to their playoff obligations in the sport of softball. Commissioner Thomas reported that they have brought resolution to the matter with the full cooperation of the administration of Sacred Heart of Mary High School.

14. WILMINGTON CHRISTIAN HIGH SCHOOL - Commissioner Stan Thomas reported on the resolution of concerns relative to Wilmington Christian High School's failure to meet their playoff obligations in the sport of softball. Commissioner Thomas emphasized the spirit of cooperation exhibited by the administration at Wilmington Christian.

15. TROY HIGH SCHOOL MAGNET PROGRAM - Mr. John Seeland, Principal of Troy High School, provided an update with reference to the Troy High School Magnet Program which is still a State Department of Education approved program.

16. MIRALESTE HIGH SCHOOL - Commissioner Stan Thomas reported on progress with respect to the placement of Miraleste High School for the upcoming 1989-90 school year.

17. SCHOOL MEMBERSHIP/SCHOOL

SIZE - Cynthia Grennan discussed with the Committee concerns with reference to schools with a very limited enrollment and their inability to field teams, properly provide adequate facilities, and lack of knowledge of the rules and regulations of the organization. It was suggested that the Office consider meeting with the administrators to review concerns with reference to their programs.

18. NEW SCHOOL MEMBERSHIP - It was moved, seconded and passed to approve membership for Desert Christian High School (Lancaster), effective immediately.

There being no further business to come before the Committee, the meeting was adjourned at 4:40 p.m.

Submitted by:
DEAN CROWLEY,
ASSOCIATE COMMISSIONER

Approved by:
STAN THOMAS,
COMMISSIONER OF ATHLETICS

SOUTHERN SECTION CIF/REEBOK/FORD 1988-89 BASKETBALL PLAYOFF SCHEDULE

BOYS

WILD CARD ROUND - (Where Necessary)
Mon., Feb. 13, Designated Home Sites.

FIRST ROUND - (All Divisions) Wed., Feb. 15, Designated Home Sites.

SECOND ROUND - Fri., Feb. 17, 1-A, SS Designated Home Sites; All Other Alternate Court Sites.

QUARTERFINALS - Wed., Feb. 22, 1-A, SS Designated Home Sites; All Other Alternate Court Sites.

SEMIFINALS - (All Divisions) Fri., Feb. 24, Alternate Court Sites.

FINALS - (5-AA, 5-A) Sat., March 4, P.M. Session, L.A. Sports Arena; (4-AA, 4-A) Wed., March 1, Bren Center UC Irvine; (3-A, 2-AA, 2-A) Sat., March 4, A.M. Session, L.A. Sports Arena; (1-A, SS) Fri., March 3, Alternate Court Sites.

GIRLS

WILD CARD ROUND - (Where Necessary)
Tue., Feb. 14, Designated Home Sites.

FIRST ROUND - (All Divisions) Thur., Feb. 16, Designated Home Sites.

SECOND ROUND - (All Divisions) Sat., Feb. 18, Designated Home Sites.

QUARTERFINALS - (All Divisions) Thur., Feb. 23, Alternate Court Sites.

SEMIFINALS - (All Divisions) Sat., Feb. 25, Alternate Court Sites.

FINALS - (5-AA, 5-A, 3A) Fri., March 3, Cal Poly Pomona; (4-AA, 4-A) Thur., March 2, Chapman College, Orange; (2-AA, 2-A) Wed., March 1, Whittier College; (1-A, SS) Fri., March 3, Alternate Court Sites.

COMMISSIONER'S CORNER

COACHING EDUCATIONAL PROGRAM PLANNED BY CIF-SS, AAF

(Continued from page 2)

women soccer coaches.

Initially, the current leagues that will participate involve the Angelus, Bay, Camino Real, Century, Freeway, Garden Grove, Moore, Ocean, Orange, Sunset, Whitmont, and a league from the Los Angeles City Section.

It is the intention of the Southern Section Office to work with the Amateur Athletic Foundation in the curriculum development phase, utilizing approximately eight persons, directed by the two liaisons. This procedure will commence during the month of January and hopefully conclude by the end of February. Logistics and personal contact with the Amateur Athletic Foundation and CIF Southern Section Representatives with involved superintendents will take place in March, 1989.

It is the intent to conduct a comprehensive instructional program during the summer months of 1989 for these soccer coaches. Coaches attending the complete workshop will receive a fair stipend for their participation.

Much of the information provided in the above paragraphs is still in the planning phase. I am bringing to you, conceptually, what the AAF and the Southern Section Office have formulated in their initial discussions; however, I am certain there will be modifications.

I should point out that the Amateur Athletic Foundation is the recipient of approximately \$93,000,000 surplus from the 1984 Olympic Games, and its mission is to improve and expand amateur athletic opportunities throughout Southern California. We are grateful to the AAF and look forward to an exciting and highly productive program. More information will follow as the program development evolves during the first quarter of 1989.

I would also like to update our member schools with regard to the new assigning program being implemented throughout the Southern Section.

One of the key components in this program is the athletic director submitting to the respective assigner, an **ACCURATE** schedule, so that the assigner does not duplicate effort. It should be noted that too many athletic directors are changing their schedules

after they have been submitted for assignment of officials. This not only involves cancelling the officials but the re-scheduling of new officials. More data will be brought to the full CIF-SS Council for discussion at its January 19, 1989 meeting relative to this concern as it reflects the officials' fees agreement for the next contractual period.

In closing, 1989 will bring forth new and exciting athletic management decisions. We are ready and willing to accept this challenge, which will require the support of our member school principals, athletic directors, coaches, parents and most importantly, student-athletes.

I wish you all a very prosperous new year!

EXECUTIVE COMMITTEE MINUTES - Oct. 18, 1988

(Continued from page 2)

9. GEOGRAPHICAL RELEAGUING UPDATE - Associate Commissioner Dean Crowley updated the Committee with regard to meetings being held with reference to the disbanding of the current San Gabriel Valley Releaguings Area and attaching the 21 schools to other existing releaguings areas. The final two meetings are set for October 20, with a final vote to be taken on November 9, 1988.

10. OFFICIALS ASSOCIATION UPDATE - Administrator Bill Clark discussed with the Committee the officials' association assigning procedures that will be completed in all areas of the Southern Section by the end of this school year.

11. NEW SCHOOL MEMBERSHIP - It was moved, seconded and passed to approve membership for Los Feliz Hills High School (Los Angeles); Palm Valley High School (Palm Springs); and Valley View High School (Moreno Valley), effective immediately. A request for membership from Menifee Valley Christian High School was denied.

12. PASADENA UNIFIED/MUIR HIGH SCHOOL REVIEW - Principal Al Fortune and Deputy Superintendent Dr. Phil Linscomb met with the Executive Committee to review concerns dealing with violations of CIF-SS Rules and Regulations by Muir High School during the 1987-88 school year. Following discussion, it was moved, seconded and passed to direct the Southern Section office to assign a staff administrator to work with the administration at Muir High School and request a written mid-year and year end report from the Principal outlining progress being made to improve compliance with Southern Section Rules and Regulations.

It was further moved, seconded and passed to commend the current administration at Muir High School and the school district for their efforts to improve the image of John Muir High School.

13. SACRED HEART OF MARY PLAYOFF OBLIGATIONS - Assistant Principal Susan Rocque met with the Committee to review violations of playoff commitments during the

ATTENTION COACHES

SAVE THIS DATE:
Saturday, April 8, 1989

First Ever...
**CIF SOUTHERN SECTION-
WILSON SPORTING GOODS**
All-Sports Coaching Clinic

Sequoia Athletic Club
Buena Park
8:00 am - 3:00 pm

Entry Fee just \$10 ... Contact
the CIF-SS Office
for reservations and further
information
(213) 860-2414 or (714) 826-5390

1988 girls' softball playoffs. Following discussion, it was moved, seconded and passed to place Sacred Heart of Mary High School on probation for one year and rule them ineligible for the 1989 girls' softball playoffs, should they so qualify. Additionally, the Executive Committee instructed President Bruce Keuning and Commissioner Stan Thomas to confer with Principal Sr. Anne Bellan at the CIF-SS Office to review, in total, the discussion between Susan Rocque and the Executive Committee.

14. WILMINGTON CHRISTIAN HIGH SCHOOL PLAYOFF OBLIGATION - Rev. Wendell Meadows and Jerry Meadows of Wilmington Christian High School met with the Committee to review concerns dealing with their inability to meet their playoff commitment during the 1988 girls' softball playoffs. It should be noted that due to a number of injuries the school could not field a team, and the school failed to notify their opponent or CIF-SS Office with reference to withdrawing from the girls' softball playoffs. Following discussion, it was moved, seconded and passed to place Wilmington Christian High School on probation for the current school year for not meeting their playoff obligation during the 1988 girls' softball playoffs.

15. SUNNY HILLS HIGH SCHOOL - INTERNATIONAL BACCALAUREATE PROGRAM - Principal Gary Mieger met with the Committee to request a waiver of the transfer rule allowing students participating in the International Baccalaureate Program immediate unrestricted eligibility. Following discussion, it was moved, seconded and passed to deny the request.

There being no further business to come before the Committee, the meeting was adjourned at 5:17 p.m.

Submitted by:
DEAN CROWLEY
ASSOCIATE COMMISSIONER

Approved by:
STAN THOMAS
COMMISSIONER OF ATHLETICS

SOUTHERN SECTION CIF/REEBOK/JACK-IN-THE-BOX 1988 Football Champions

DIVISION I - Fountain Valley

DIVISION II - Antelope Valley

DIVISION III - Paramount

DIVISION IV - Los Altos

DIVISION V - Canyon Springs

DIVISION VI - Corona del Mar

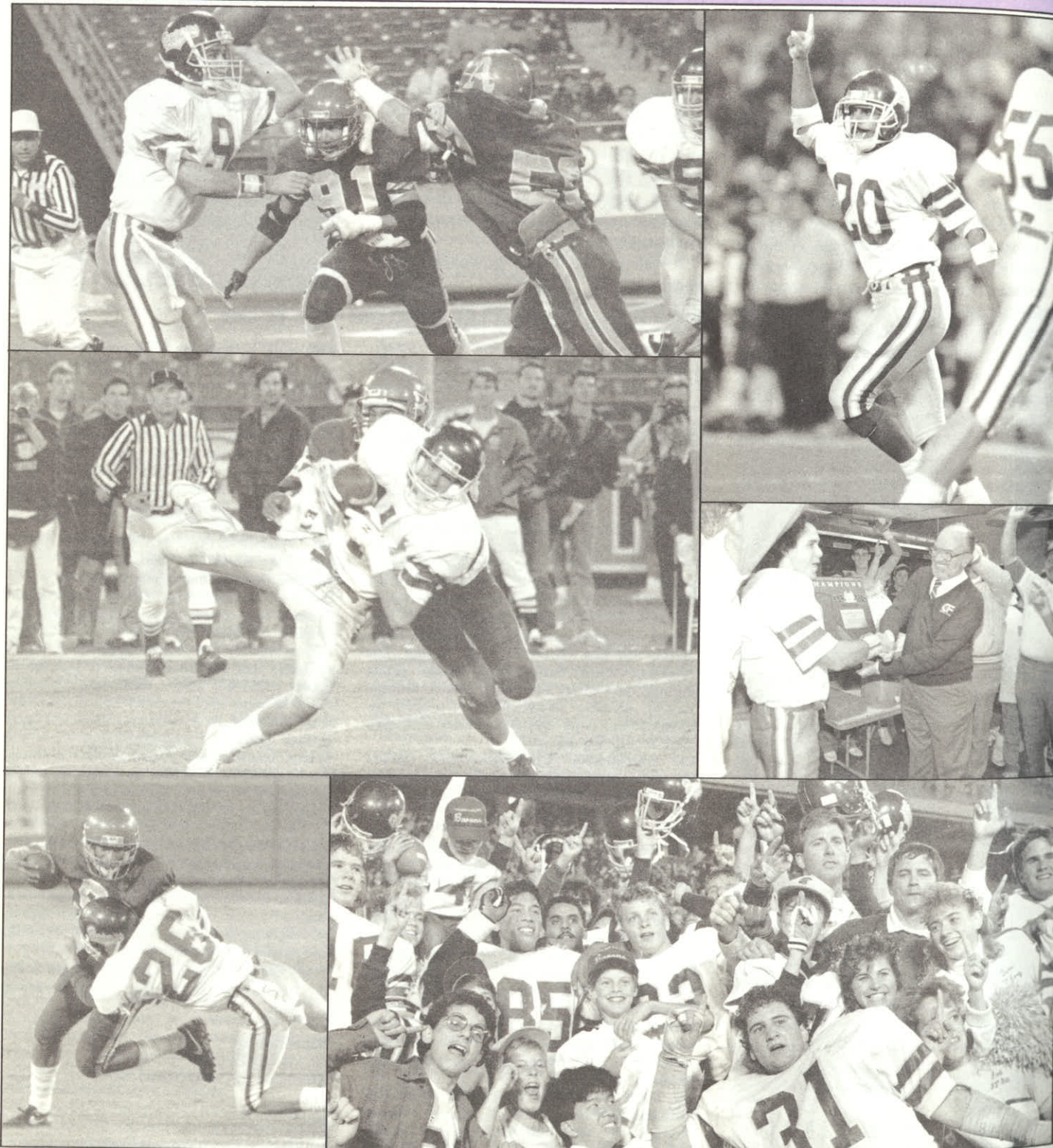
DIVISION VII - San Marino

DIVISION VIII - Trabuco Hills

DIVISION IX - Carpinteria-Tehachapi

8-MAN LARGE - Brentwood

8-MAN SMALL - Coast Christian



photos by Wayne Seeber

SOUTHERN SECTION CIF/REEBOK/JACK-IN-THE-BOX 1988 Football Playoff Results

DIVISION I

First Round: Loyola 30, Westminster 10; Mater Dei 16, Jordan 9; Fontana 21, Edison 16; Bishop Amat 35, Millikan 0; Servite 35, Eisenhower 17; Crespi 26, Long Beach Poly 23; Rubidoux 20, St. Paul 14; Fountain Valley 39, St. Francis 0.

Quarterfinals: Loyola 30, Mater Dei 17; Bishop Amat 28, Fontana 27 (OT); Servite 41, Crespi 21; Fountain Valley 10, Rubidoux 0.

Semifinals: Bishop Amat 16, Loyola 0; Fountain Valley 10, Servite 7.

Finals: Fountain Valley 31, Bishop Amat 24.

DIVISION II

First Round: Beverly Hills 29, Santa Barbara 21; Palmdale 28, Channel Islands 14; Leuzinger 32, Arcadia 20; Antelope Valley 37, Dos Pueblos 10; Muir 22, Santa Monica 15; Buena 19, Thousand Oaks 14; Hawthorne 13, Pasadena 0; Canyon/C.C. 44, Camarillo 6.

Quarterfinals: Palmdale 34, Beverly Hills 31; Antelope Valley 21, Leuzinger 13; Buena 7, Muir 6; Canyon/C.C. 29, Hawthorne 14.

Semifinals: Antelope Valley 23, Palmdale 13; Canyon/C.C. 45, Buena 14.

Finals: Antelope Valley 28, Canyon/C.C. 22.

DIVISION III

First Round: Mission Viejo 21, Warren 6; El Dorado 24, Burbank 14; Santa Ana 14, El Toro 13 (OT); Paramount 26, Hart 14; Dominquez 21, Katella 7; El Modena 27, Capistrano Valley 14; Schurr 27, Cerritos 6; Los Alamitos 6, Foothill 3.

Quarterfinals: Mission Viejo 34, El Dorado 7; Paramount 31, Santa Ana 24; El Modena 31, Dominguez 6; Los Alamitos 52, Schurr 22.

Semifinals: Paramount 35, Mission Viejo 32, Los Alamitos 19, El Modena 3.

Finals: Paramount 30, Los Alamitos 20.

DIVISION IV

First Round: Bell Gardens 21, Arlington 6; Claremont 7, Nogales 3; Workman 34, Palm Springs 28 (OT); Los Altos 27, Montebello 6; Northview 35, Damien 16; El Rancho 28, Wilson/H.H. 6; Don Lugo 34, Walnut 0; Ramona 57, Baldwin Park 36.

Quarterfinals: Claremont 14, Bell Gardens 6; Los Altos 21, Workman 17; El Rancho 25, Northview 7; Ramona 64, Don Lugo 22.

Semifinals: Los Altos 14, Claremont 3; El Rancho 21, Ramona 6.

Finals: Los Altos 12, El Rancho 0.

DIVISION V

First Round: Coachella Valley 6, Etiwanda 0; San Bernardino 32, Bassett 14; Apple Valley 16, Rosemead 13; Corona 32, Central 29 (2OT); Norco 48, Ganesha 19, Arroyo 31, Palm Desert 20; Cajon 63, Mountain View 0; Canyon Springs 42, Pomona 0.

Quarterfinals: San Bernardino 26, Coachella Valley 8; Corona 7, Apple Valley 3; Norco 28, Arroyo 17; Canyon Springs 39, Cajon 6.

Semifinals: San Bernardino 22, Corona 11; Canyon Springs 48, Norco 12.

Finals: Canyon Springs 30, San Bernardino 7.

DIVISION VI

First Round: Valencia 42, Los Amigos 6; Sunny Hills 21, Bellflower 18; Kenney 17, Estancia 14; Fullerton 24, La Mirada 21; Corona del Mar 44, Troy 0; Anaheim 16, Artesia 6; Saddleback 17, La Habra 7; Pacifica 19, Western 14.

Quarterfinals: Valencia 20, Sunny Hills 7; Fullerton 16, Kennedy 7; Corona del Mar 18, Anaheim 8; Pacifica 28, Saddleback 9.

Semifinals: Valencia 20, Fullerton 6; Corona del Mar 14, Pacifica 7.

Finals: Corona del Mar 17, Valencia 7.

DIVISION VII

First Round: Santa Maria 41, South Pasadena 6; Chaminade 35, North Torrance 14; Serra 30, Harvard 8; Temple City 24, Redondo 23; Lompoc 23, Notre Dame/S.O. 12; Morningside 51, St. Bernard 0; Verbum Dei 14, San Luis Obispo 12; San Marino 28, South Torrance 19.

Quarterfinals: Santa Maria 19, Chaminade 15; Temple City 49, Serra 6; Lompoc 14, Morningside 9; San Marino 7, Verbum Dei 0.

Semifinals: Santa Maria 14, Temple City 7; San Marino 30, Lompoc 7.

Finals: San Marino 19, Santa Maria 11.



DIVISION VIII

First Round: Atascadero 43, Santa Ynez 39; Bloomington 48, Costa Mesa 21; Trabuco Hills 49, Yucaipa 6; Santa Paula 29, St. Monica 27; Agoura 30, El Segundo 7; Paso Robles 7, Notre Dame/R. 0; Woodbridge 31, Cabrillo 14; Santa Clara 38, Mary Star 7.

Quarterfinals: Atascadero 28, Bloomington 13; Trabuco Hills 42, Santa Paula 7; Agoura 7, Paso Robles 0; Woodbridge 34, Santa Clara 14.

Semifinals: Trabuco Hills 42, Atascadero 6; Woodbridge 21, Agoura 0.

Finals: Trabuco Hills 34, Woodbridge 14.

DIVISION IX

First Round: Valley Christian/C. 69, California School for the Deaf 6; Tehachapi 52, Boron 20; Kern Valley 34, Serrano 20; Oak Park 24, Montclair Prep 6; Whittier Christian 41, Marshall Fundamental 6; Desert 44, Leffingwell Christian 6; Trona 22, Big Bear 19; Carpinteria 55, Southern California Christian 8.

Quarterfinals: Tehachapi 12, Valley Christian/C. 8; Kern Valley 14, Oak Park 3; Desert 25, Whittier Christian 7; Carpinteria 35, Trona 7.

Semifinals: Tehachapi 17, Kern Valley 10; Carpinteria 35, Desert 8.

Finals: Carpinteria 14, Tehachapi 14 (Co-Champions).

EIGHT-MAN LARGE DIVISION

First Round: Pasadena Poly 45, Coast Union 0; Faith Baptist 42, Templeton 21; Brentwood 15, Camp Kilpatrick 6; Rio Hondo Prep 28, Laton 27.

Semifinals: Pasadena Poly 40, Faith Baptist 18; Brentwood 29, Rio Hondo Prep 22.

Finals: Brentwood 39, Pasadena Poly 20.

EIGHT-MAN SMALL DIVISION

First Round: Coast Christian 38, Cuyama Valley 14; St. Margaret's 55, Big Pine 14; Abundant Life 58, Lone Pine 41; Bloomington Christian 42, Central Valley Christian 15.

Semifinals: Coast Christian 58, St. Margaret 26; Bloomington Christian 76, Abundant Life 28.

Finals: Coast Christian 34, Bloomington Christian 25.

SOUTHERN SECTION CIF/REEBOK/1988 CROSS COUNTRY RESULTS



photo by Wayne Seeber

BOYS 4-A DIVISION

Team

1. Dana Hills - 86 (79:22)
2. Camarillo - 90 (79:44)
3. Corona del Mar - 106 (80:05)

Individual

1. Mike Williamson, Thousand Oaks (15:02)
2. Robert Nelson, Muir (15:09)
3. Ed Lavelle, Corona del Mar (15:11)
4. Jimmy Rodriguez, Santa Ana Valley (15:14)

BOYS 3-A DIVISION

Team

1. Rowland - 50 (80:05)
2. Upland - 90 (81:58)
3. Hart - 116 (83:06)

Individual

1. Todd Lewis, Burbank (15:13)
2. Donny Lefevre, Nogales (15:29)
3. Brian Johnson, Rowland (15:33)
4. Ernie Delgado, Rowland (15:36)
5. Dan Galindo, Upland (15:40)

BOYS 2-A DIVISION

Team

1. Arroyo Grande - 94 (81:49)
 2. Walnut - 99 (81:21)
 3. Agoura - 114 (81:59)
- Individual**
1. Scott Hemple, Walnut (15:06)
 2. Bryan Dameworth, Agoura (15:09)
 3. Luis Quintana, Arroyo Grande (15:24)

CONGRATULATIONS STATE CIF/REEBOK CROSS COUNTRY CHAMPIONS

BOYS

DIVISION I - Dana Hills
DIVISION II - Corona del Mar
DIVISION III - Sherman Indian

GIRLS

DIVISION I - Palos Verdes
DIVISION II - Newport Harbor

4. Tony Gibney, Laguna Hills (15:42)
5. Tony Castelon, La Puente (15:47)

BOYS 1-A DIVISION

Team

1. Sherman Indian - 74 (84:21)
2. Salesian - 104 (86:28)
3. St. Anthony - 105 (86:33)

Individual

1. Gary Stoltz, Miraleste (15:31)
2. Oscar Perez, Peter Noster (16:06)
3. Tony Bergman, Whittier Christian (16:11)
4. Val Nevayaktewa, Sherman Indian (16:11)
5. Oscar Montes, Maranatha (16:20)

GIRLS 4-A DIVISION

Team

1. Palos Verdes - 32 (95:24)
2. Newport Harbor - 87 (99:50)
3. Huntington Beach - 133 (101:39)

Individual

1. Jamie Park, Santa Barbara (17:57)
2. Ashley Black, Palos Verde (18:14)
3. Maya Muneno, Palos Verde (18:39)
4. Shelley Taylor, Edison (18:46)

GIRLS 3-A DIVISION

Team

1. Norco - 70 (101:13)
2. Montebello - 71 (100:03)
3. Hesperia - 95 (101:29)

Individual

1. Reyna Cervantes, Montebello (18:04)
2. Nicole Robbins, Hesperia (18:16)
3. Suzanne Castruita, West Covina (18:19)
4. Anjie Miranda, Palm Springs (18:58)
5. Bernice Santoyo, Mountaivi (19:05)

GIRLS 2-A DIVISION

Team

1. Agoura - 58 (98:57)

SOUTHERN SECTION CIF/REEBOK 1988 CROSS COUNTRY CHAMPIONS

BOYS

4-A DIVISION

Dana Hills Palos Verdes

3-A DIVISION

Rowland Norco

2-A DIVISION

Arroyo Grande Agoura

1-A DIVISION

Sherman Indian Maranatha

2. Yucaipa - 115 (103:17)
3. South Hills - 133 (102:46)

Individual

1. Karen Hecox, South Hills (17:57)
2. Deena Drossin, Agoura (18:41)
3. Tiffany York, Agoura (18:51)
4. Sandra Acosta, Walnut (18:52)
5. Ivanka Boras, Temple City (19:20)

GIRLS 1-A DIVISION

Team

1. Maranatha - 37 (104:40)
2. Chaminade - 121 (110:33)
3. L.A. Baptist - 124 (110:44)

Individual

1. Tonya Thayer, Serrano (19:00)
2. Karen Talamantes, Western Chr. (19:20)
3. Jean Harvery, Paraclete (19:25)
4. Zita Hillinger, Serrano (19:25)
5. Nicky Shaw, Fillmore (19:34)

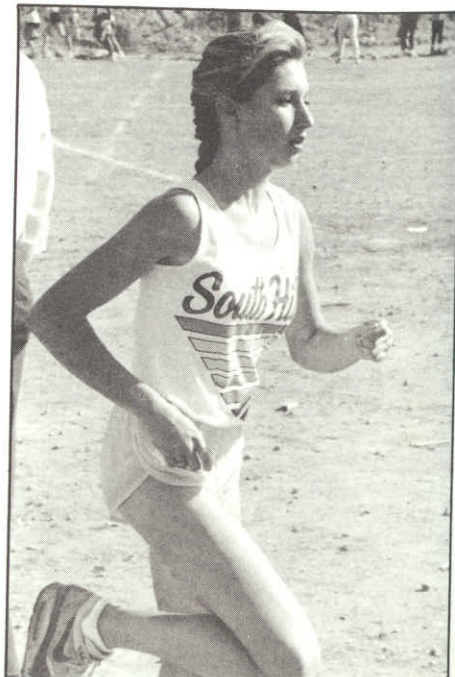


photo by Wayne Seeber

SOUTHERN SECTION CIF/REEBOK 1988 WATER POLO PLAYOFF RESULTS

4-A DIVISION

First Round: Sunny Hills 15, Los Alamitos 9; Tustin 11, Millikan 8; Newport Harbor 8, El Dorado 6; Villa Park 13, L.B. Poly 6; L.B. Wilson 15, Buena Park 5; Foothill 8, University 6; Fullerton 12, Cypress 2; Corona del Mar 15, Canyon/A. 1.

Quarterfinals: Sunny Hills 15, Tustin 4; Newport Harbor 6, Villa Park 3; L.B. Wilson 12, Foothill 11 (OT); Corona del Mar 12, Fullerton 5.

Semifinals: Sunny Hills 14, Newport Harbor 9; Corona del Mar 13, L.B. Wilson 9.

Finals: Corona del Mar 10, Sunny Hills 7.

3-A DIVISION

First Round: El Toro 22, Gahr 8; Santa Monica 13, Thousand Oaks 3; San Bernardino 16, Woodbridge 4; Fontana 8, Los Altos 6; Nogales 14, Downy 8; Riverside Poly 10, Muir 7; Loyola 16, Laguna Beach 8; Marina 12, Palm Springs 6; San Clemente 12, Cerritos 8; Palos Verde 12, Crescenta Valley 7; Royal 13, Crespi 6; Edison 14, Rowland 13; Costa Mesa 9, Westlake 8; St. John Bosco 9, Fountain Valley 8; Redlands 16, Indio 15 (OT); Capistrano Valley 13, Glendale 8.

Second Round: El Toro 13, Santa Monica 4; San Bernardino 8, Fontana 6; Riverside Poly 8, Nogales 6; Marina 12, Loyola 8; San Clemente 12, Palos Verde 6; Edison 11, Royal 10; Costa Mesa 13, St. John Bosco 6; Capistrano Valley 14, Redlands 8.

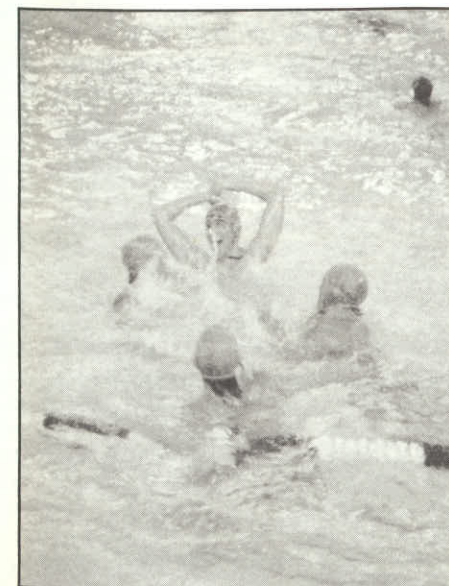
Quarterfinals: El Toro 13, San Bernardino 10; Riverside Poly 8, Marino 7 (OT); San Clemente 11, Edison 9; Capistrano Valley 12, Costa Mesa 7.

Semifinals: El Toro 10, Riverside Poly 8; San Clemente 9, Capistrano Valley 8 (OT).

Finals: El Toro 19, San Clemente 11.

2-A DIVISION

First Round: Harvard 37, San Dimas 1; Bell Gardens 14, Claremont 12; Ventura 11, Righetti 7; Kennedy 14, Miraleste 8; Whittier 17, Upland 8; Valencia 17, Workman 6; Agoura 12, Burbank 8; South Pasadena 22, Pasadena Poly 6; San Luis Obispo 15, Buena 8; Webb 14, Santiago 10; Dos Pueblos 15, El Segundo 8; La Serna 16, Western 11; Santa Ynez 15, Cabrillo 10; San Marino 13,



SOUTHERN SECTION CIF/REEBOK 1988 WATER POLO CHAMPIONS

4-A DIVISION

Corona del Mar

3-A DIVISION

El Toro

2-A DIVISION

Harvard



TRAINERS RECOMMENDED BY ATHLETIC SAFETY COMMITTEE

(Continued from page 3)

"Staff coaches are generally well prepared for emergency situations," continued Clickard, "but a walk-on coach in one of the non-revenue producing sports or perhaps at a lower level of competition, may not be. We must realize that all of our student-athletes, regardless of the sport or level of competition, require first quality care when the need arises."

School board members and superintendents are certainly aware of the goal to limit potential liability situations concerning all campus endeavors, and athletic safety is a major concern. With

a full-time trainer on staff, a school not only provides improved care for its student-athletes, but is better prepared to cover itself in potential litigation stemming from athletic injury.

Bill Chambers is willing to act as a clearing agent for CIF-SS member schools seeking qualified athletic trainers. He may be reached at (714) 879-9227.

Further, Jim Clover can be of assistance to schools in the area of contract services for athletic trainers. His office phone numbers are (714) 682-5661 or (714) 781-8810.

SOUTHERN SECTION CIF/REEBOK/WEST COAST NETTING 1988 GIRLS VOLLEYBALL PLAYOFF RESULTS

5-A DIVISION

Wild Card: Dana Hills def. Trabuco Hills 15-6, 15-10, 15-9; Dos Pueblos def. St. Joseph/L. 15-8, 15-8, 15-8.

First Round: Irvine def. Tustin 15-4, 15-3, 15-12; Hueneme def. Bishop Montgomery 17-15, 14-16, 13-15, 15-11, 15-7; Laguna Beach def. Redondo 15-6, 15-1, 15-4; Corona del Mar def. Dana Hills 15-12, 15-6, 17-15; Mira Costa def. Dos Pueblos 15-3, 15-13, 15-5; Mater Dei def. Woodbridge 7-15, 3-15, 15-9, 15-6, 15-12; Capistrano Valley def. Newport Harbor 18-16, 16-14, 8-15, 15-10; Santa Barbara def. South Torrance 15-3, 15-4, 15-6.

Quarterfinals: Irvine def. Hueneme 15-4, 15-3, 15-6; Laguna Beach def. Corona del Mar 15-4, 13-15, 10-15, 15-5, 15-9; Mira Costa def. Mater Dei 15-9, 9-15, 15-7, 15-3; Santa Barbara def. Capistrano Valley 15-6, 15-11 13-15 14-16, 15-13.

Semifinals: Irvine def. Laguna Beach 13-15, 15-7, 15-7, 6-15, 15-4; Mira Costa def. Santa Barbara 11-15, 15-12, 15-12, 15-3.

Finals: Irvine def. Mira Costa 17-15, 15-10, 15-6.

4-A DIVISION

First Round: Gahr def. Los Alamitos 15-0, 15-10, 15-3; Royal def. Arcadia 15-11, 16-14, 15-7; Marina def. Torrance 15-13, 9-15, 17-19, 15-13, 15-11; Marlborough def. Jordan 15-3, 15-6, 15-7; Newbury Park def. Burroughs/B. 15-8, 15-1, 10-15, 15-12; Louisville def. Glendale 15-10, 15-8, 15-12; Loara def. Schurr 13-15, 16-14, 15-10, 9-15, 15-10; Edison def. Paramount 15-0, 15-8, 15-5; San Gabriel def. Simi Valley 15-4, 15-9, 15-7; L.B. Wilson def. Beverly Hills 15-12, 15-12, 15-9; Santa Monica def. Pasadena 15-10, 8-15, 15-5, 10-15, 15-11; Marymount def. Notre Dame/S.O. 15-12, 15-8, 15-12; Esperanza def. L.B. Poly 15-8, 15-5, 15-4; Fountain Valley def. Cerritos 15-2, 15-3, 15-8; Chaminade def. Notre Dame Academy 15-7, 17-15, 15-4; Thousand Oaks def. Alhambra 15-0, 15-7, 15-7.

Second Round: Gahr def. Royal 15-6, 15-8, 16-14; Marina def. Marlborough 13-15, 15-8, 15-10, 15-3; Newbury Park def. Louisville 15-9, 15-12, 13-15, 15-8; Edison def. Loara 15-2, 15-4, 15-2; San Gabriel def. L.B. Wilson 15-9, 15-11, 15-13; Marymount def. Santa Monica 15-12, 15-12, 18-16; Fountain Valley def. Esperanza 8-15, 17-15, 14-16, 15-0, 15-13; Thousand Oaks def. Chaminade 15-10, 15-8, 15-13.

Quarterfinals: Gahr def. Marina 21-23, 15-4, 15-8, 15-7; Edison def. Newbury Park 15-10, 15-12, 2-15, 15-11; San Gabriel def. Marymount 13-15, 15-13, 16-18, 15-6, 15-9; Thousand Oaks def. Fountain Valley 15-11, 13-15, 15-6, 15-4.

Semifinals: Gahr def. Edison 15-9, 15-5, 15-11; Thousand Oaks def. San Gabriel 15-1, 15-6, 15-12.

Finals: Gahr def. Thousand Oaks 15-11, 15-8, 15-2.

3-A DIVISION

First Round: Sunny Hills def. Santa Fe 15-7, 15-5, 15-7; Fontana def. Diamond Bar 15-9, 15-10, 15-13; Rim of the World def. Eisenhower 15-1, 15-10, 15-3; La Serna def. La Quinta 15-6,



SOUTHERN SECTION CIF/REEBOK WEST COAST NETTING 1988 GIRLS VOLLEYBALL CHAMPIONS

5-A DIVISION Irvine

4-A DIVISION Gahr

3-A DIVISION Sunny Hills

2-A DIVISION Paso Robles

1-A DIVISION St. Anthony

SMALL SCHOOLS DIVISION Mission Prep

15-9, 15-3; Canyon/C.C. def. Santa Ynez 15-12, 15-3, 4-15, 15-10; Fullerton def. San Marino 15-13, 15-9, 9-15, 15-13; Villa Park def. Kennedy 15-13, 15-9, 15-17, 15-9; Agoura def. Quartz Hill 15-1, 15-11, 15-5; La Habra def. Wilson/H.H. 15-6, 15-5, 15-1; El Modena def. Garden Grove 14-16, 15-6, 15-5, 15-10; Antelope Valley def. La Canada 11-15, 15-9, 15-12, 15-6; Calabasas def. Montebello 16-18, 15-5, 15-4 13-15, 15-13; Canyon/A. def. Temecula Valley 15-8, 15-13, 15-8; Colton def. West Covina 15-7, 15-3, 15-0; Whittier def. Notre Dame/R. 15-8, 17-15, 15-10; Los Altos def. Temple City 15-7, 15-7, 15-4.

Second Round: Sunny Hills def. Fontana 15-8, 15-10, 15-4; La Serna def. Rim of the World 15-11, 15-4, 15-5; Fullerton def. Canyon/C.C. 15-11, 15-9, 15-13; Villa Park def. Agoura 13-15, 15-9, 15-12, 11-15, 15-7; El Modena def. La Habra 5-15, 15-9, 15-11, 17-15; Calabasas def. Antelope Valley 12-15, 15-3, 15-3, 15-11; Canyon/A. def. Colton 15-17, 13-15, 15-10, 15-12, 15-7; Los Altos def. Whittier 15-9, 15-6, 15-2.

Quarterfinals: Sunny Hills def. La Serna 15-10, 15-12, 15-13; Villa Park def. Fullerton 15-0, 15-7, 15-7; El Modena def. Calabasas 15-6, 15-9, 10-15, 15-6; Los Altos def. Canyon/A. 15-10, 15-8, 15-6.

Semifinals: Sunny Hills def. Villa Park 15-1, 15-5, 15-9; El Modena def. Los Altos 11-15, 15-10, 15-9, 15-8.

Finals: Sunny Hills def. El Modena 15-8, 15-5, 15-12.

2-A DIVISION

Wild Card: Upland def. Victor Valley 15-6, 15-6, 15-5; St. Joseph/S.M. def. Righetti 15-9, 13-15, 15-10, 15-13; Arlington def. Palm Desert 15-7, 15-6, 16-14; Magnolia def. Glenn 15-11, 15-12, 15-13.

First Round: Arroyo Grande def. Keppel 15-4, 15-2, 15-4; Atascadero def. Bishop Diego 15-11, 15-10, 15-4; Western def. Arroyo 15-8, 15-5, 15-8; Bellflower def. Pomona Catholic 15-7, 15-10, 15-1; Hemet def. Corona 15-12, 15-5, 15-10; Upland def. Etiwanda 14-16, 15-10, 15-11, 17-15; Alta Loma def. Brawley 7-15, 15-5, 14-16, 15-6, 15-2; Cajon def. Norte Vista 16-14, 14-16, 15-10, 15-11; La Reina def. St. Joseph/S.M. 15-12, 15-7, 15-12; Canyon Springs def. Ontario 14-16, 9-15, 15-13, 15-7, 15-2; El Monte def. Oak Park 15-3, 11-15, 16-14, 15-5; Paso Robles def. San Luis Obispo 15-9, 15-10, 10-15, 15-13; Mayfair def. Anaheim 15-4, 15-11, 15-9; Palm Springs def. Central 10-15, 15-11, 15-9, 15-9; Apple Valley def. Arlington 15-2, 15-12, 15-5; Chino def. Magnolia 15-7, 14-16, 15-4, 15-5.

Second Round: Arroyo Grande def. Atascadero 13-15, 16-14, 15-4, 10-15, 15-11; Western def. Bellflower 15-5, 7-15, 15-4, 13-15, 16-14; Upland def. Hemet 15-6, 15-9, 15-12; Alta Loma def. Cajon 15-2, 15-10, 15-5; La Reina def. Canyon Springs 15-3, 15-12, 13-15, 16-18, 15-4; Paso Robles def. El Monte 15-7, 15-9, 14-16, 15-11; Mayfair def. Palm Springs 15-9, 17-15, 10-15, 15-11; Chino def. Apple Valley 10-15, 15-9, 12-15, 15-8, 15-11.

see VOLLEYBALL RESULTS page 11

VOLLEYBALL PLAYOFF RESULTS

(Continued from page 10)

Quarterfinals: Arroyo Grande def. Western 15-13, 15-6, 9-15, 15-17, 15-5; Alta Loma def. Upland 15-9, 5-15, 15-13, 13-15, 15-8; Paso Robles def. La Reina 11-15, 8-15, 15-13, 15-13; Chino def. Mayfair 15-11, 15-7, 15-12.

Semifinals: Arroyo Grande def. Alta Loma 15-9, 15-12, 15-9; Paso Robles def. Chino 8-15, 12-15, 15-6, 17-15, 15-6.

Finals: Paso Robles def. Arroyo Grande 15-9, 15-11, 4-15, 9-15, 15-7.

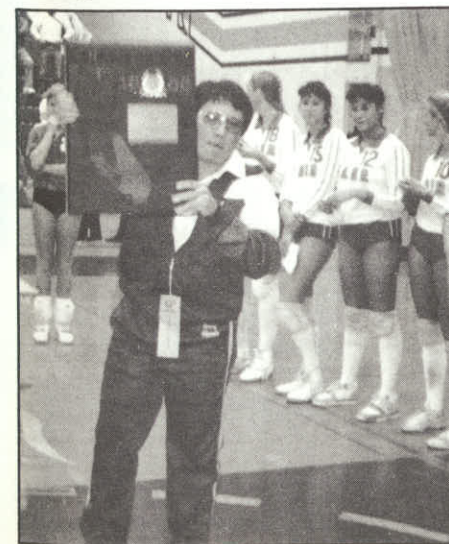
1-A DIVISION

First Round: L.A. Baptist def. Regina Caeli 15-2, 15-0, 15-4; Big Bear def. Gladstone 15-1, 15-9, 15-11; Valley Christian/C. def. Covina 11-15, 15-8, 9-15, 15-11, 17-15; Windward def. El Segundo 15-8, 9-15 9-15, 15-10, 15-10; Paraclete def. Holy Family 15-11, 15-9, 15-7; Pius X def. St. Matthias 15-0, 15-11, 15-5; San Dimas def. Twentynine Palms 15-2, 15-4, 15-4; Campbell Hall def. Bishop 15-9, 15-10, 15-6; St. Anthony def. Santa Margarita 6-15, 11-15, 15-6, 16-14, 15-6; Village Christian def. Mojave 18-16, 6-15, 15-5, 4-15, 16-14; South Hills def. Maranatha 15-10, 15-4, 15-13; Brentwood def. Sierra Vista 15-4, 15-5, 15-4; Miraleste def. Capistrano Valley Christian 17-15, 8-15, 15-13, 4-15, 15-13; Connelly def. Providence 15-7, 15-8, 15-10; Yucca Valley def. Workman 9-15, 15-12, 15-0, 15-8; Flintridge Sacred Heart def. Desert 15-12, 15-8, 15-0.

Second Round: L.A. Baptist def. Big Bear 15-7, 16-14, 15-8; Windward def. Valley Christian/C. 15-5, 15-10, 15-13; Paraclete def. Pius X 9-15, 15-10, 15-11, 15-6; Campbell Hall def. San Dimas 15-9, 15-11 15-11; St. Anthony def. Village Christian 15-11, 15-11, 15-7; Brentwood def. South Hills 15-12, 15-12, 11-15, 15-8; Miraleste def. Connelly 15-7, 15-9, 17-15; Flintridge Sacred Heart def. Yucca Valley 15-6, 15-2, 15-10.

Quarterfinals: L.A. Baptist def. Windward 15-8, 15-12, 15-9; Campbell Hall def. Paraclete 4-15, 15-7, 15-11, 15-6; St. Anthony def. Brentwood 15-1, 15-13, 15-12; Flintridge Sacred Heart def. Miraleste 15-1, 15-12, 15-10.

Semifinals: L.A. Baptist def. Campbell Hall 15-12, 15-3, 8-15, 9-15, 15-4; St. Anthony def. Flintridge Sacred Heart 15-7, 15-8, 7-15, 16-14.



Finals: St. Anthony def. L.A. Baptist 9-15, 15-11, 15-8, 15-11.

SMALL SCHOOLS DIVISION

Wild Card: Maricopa def. Cuyama Valley 15-3, 15-5, 15-11; Boron def. Lee Vining 15-11, 15-6, 15-6; Thacher def. W. Valley Christian 15-1, 15-13, 15-1; Southern California Christian def. Wilmington Christian 15-1, 15-1, 15-1; Newport Christian def. Pacific Shores 9-15, 15-6, 15-11, 15-11; Rio Hondo Prep def. Southwestern Academy 15-9, 15-2, 15-9; Big Pine def. Hesperia Christian 15-12, 15-11, 6-15, 15-5; Villanova Prep def. Ribet Christian 15-4, 15-3, 15-10; Linfield def. Bethel Christian 15-1, 15-9, 15-9; Mesrobian def. Harbor Christian 15-2, 11-15, 13-15, 15-11, 15-7.

First Round: Mayfield def. Maricopa 15-12, 15-2, 15-10; Boron def. Grace Community 4-15, 15-10, 15-4, 15-8; Pilgrim def. North County Christian 15-9, 15-3, 15-12; Thacher def. Pioneer Baptist 15-3, 15-13, 15-11; Liberty Christian def. Southern California Christian 15-14, 15-11, 15-14; Desert Christian def. Abundant Life 15-3, 15-12, 15-6; Newport Christian def. Woodcrest Christian 15-12, 10-15, 15-11, 15-8; Mammoth def. La Sierra Academy 15-1, 15-2, 15-10; Rio Hondo Prep def. Cate 15-11, 8-15, 16-14, 15-4; Big Pine def. First Lutheran 15-13, 15-12, 15-13; Villanova Prep def. Valley Christian/S.M. 10-15, 13-15, 15-10, 15-10; Mission Prep def. West L.A. Baptist 15-0, 15-6, 15-3; Leffingwell Christian def. St. Margaret's 15-7, 17-15, 15-5; Blooming-

RULE REVIEW

(Continued from page 3)

Another common mistake is in the joint sponsoring of a tournament by outside groups such as Rotary Clubs, the Kiwanis, etc. Schools are advised that by rule, management and control of all finances connected with the activity shall remain with the host school, league or CIF Section. A financial statement indicating all high school,

CONGRATULATIONS CIF/REEBOK STATE DIVISION I VOLLEYBALL CHAMPION Irvine High School

ton Christian def. Death Valley 15-13, 15-4, 15-3; Linfield def. Elsinore Christian 15-2, 15-8, 15-4; Chadwick def. Mesrobian 15-1, 15-2, 15-3.

Second Round: Mayfield def. Boron 15-9, 17-15, 10-15, 15-11; Pilgrim def. Thacher 15-9, 15-5, 15-9; Liberty Christian def. Desert Christian 15-12, 15-8, 15-5; Mammoth def. Newport Christian 15-8, 15-12, 15-3; Rio Hondo Prep def. Big Pine 15-12, 15-7, 10-15, 15-7; Mission Prep def. Villanova Prep 15-6, 15-1, 15-10; Leffingwell Christian def. Bloomington Christian 15-10, 15-4, 15-6; Chadwick def. Linfield 15-5, 15-7, 15-7.

Quarterfinals: Mayfield def. Pilgrim 15-5, 15-13, 15-11; Mammoth def. Liberty Christian 15-0, 15-9, 15-5; Mission Prep def. Rio Hondo Prep 16-14, 15-6, 15-0; Chadwick def. Leffingwell Christian 15-8, 15-9, 15-5.

Semifinals: Mayfield def. Mammoth 15-11, 15-3, 15-8; Mission Prep def. Chadwick 2-15, 12-15, 15-13, 15-12, 15-7.

Finals: Mission Prep def. Mayfield 15-10, 11-15, 16-14, 15-3.

league or CIF Section revenues and expenditures must be filed with the State CIF Office whenever the activity requires State CIF sanction. Further, if the title of the event includes the name of an outside organization, the title must be preceded by the name of the host school, league or CIF Section.

Should you, as an administrator or coach, have any question regarding sanctioning events, please contact me personally, or any other CIF-SS Administrator for assistance.

SOUTHERN SECTION CIF/REEBOK/WILSON

1988 Girls Team Tennis Playoff Results

4-A DIVISION

First Round: Miraleste 16, Torrance 2; Edison 15, Marlborough 3; Estancia 10, Rolling Hills 8; Santa Barbara 15, Marina 3; Palos Verdes 14, Newport Harbor 4; Westlake/L.A. 11, Dos Pueblos 7; Fountain Valley 13, Beverly Hills 5; Corona del Mar 18, Buena 0.

Quarterfinals: Miraleste 13, Edison 5; Santa Barbara 11, Estancia 7; Palos Verdes 15, Westlake/L.A. 3; Corona del Mar 14, Fountain Valley 4.

Semifinals: Miraleste 11, Santa Barbara 7; Corona del Mar 11, Palos Verdes 7.

Finals: Corona del Mar 9, Miraleste 9 (CDM 71-65).

3-A DIVISION

First Round: San Marino 14, Camarillo 4; Redlands 15, Villa Park 3; Glendale 12, Thousand

SOUTHERN SECTION CIF/REEBOK/WILSON 1988 TEAM TENNIS CHAMPIONS

4-A DIVISION

Corona del Mar

3-A DIVISION

San Marino

2-A DIVISION

Diamond Bar

1-A DIVISION

Mayfield

SMALL SCHOOLS DIVISION

St. Joseph/S.M.

Oaks 6; Calabasas 10, San Gabriel 4; South Torrance 9, Mission Viejo 9 (S.T. 80-62); Alhambra 14, South Pasadena 4; Foothill 17, Rubidoux 1; Dana Hills 16, Woodbridge 2; Agoura 18, Redondo 0; Arcadia 10, Simi Valley 8; Riverside Poly 10, La Canada 8; Laguna Hills 14, El Toro 4; Westlake 18, Crescenta Valley 0; Hart 9, Mira Costa 9 (H. 81-77); Canyon/A. 16, San Geronio 2; Capistrano Valley 18, Trabuco Hills 0.

Second Round: San Marino 18, Redlands 0; Calabasas 11, Glendale 7; South Torrance 10, Alhambra 8; Foothill 10, Dana Hills 8, Agoura 17, Arcadia 1; Laguna Hills 13, Riverside Poly 5; Westlake 12, Hart 6; Capistrano Valley 15, Canyon/A. 3.

Quarterfinals: San Marino 11, Calabasas 7; Foothill 12, South Torrance 6; Agoura 9, Laguna Hills 9 (A. 84-78); Capistrano Valley 17, Westlake 1.

Semifinals: San Marino 14, Foothill 4; Capistrano Valley 14, Agoura 4.

Finals: San Marino 11, Capistrano Valley 7.

2-A DIVISION

First Round: Diamond Bar 16, Ramona 2; Sonora 15, Cerritos 3; El Dorado 13, Rosary 5; Palm Springs 11, Central 7; Mater Dei 14, Sunny Hills 4; Claremont 13, Los Altos 5; Warren 9, Millikan 9 (W. 76-68); Louisville 12, St. Joseph/L. 6; St. Lucy's 15, Coachella Valley 3; Paramount 13, Nogales 5; Los Alamitos 18, Lakewood 0; Bishop Montgomery 10, Chaminade 8; Palm Desert 12, Glendora 6; Fullerton 14, Rowland 4; Katella 13, L.B. Wilson 5; Hemet 18, Brawley 0.

Second Round: Diamond Bar 13, Sonora 5; El Dorado 9, Palm Springs 9 (E.D. 76-69); Mater Dei 10, Claremont 8; Louisville 11, Warren 7; St. Lucy's 14, Paramount 4; Bishop Montgomery 10, Los Alamitos 8; Fullerton 9, Palm Desert 9 (F. 79-72); Katella 12, Hemet 6.

Quarterfinals: Diamond Bar 14, El Dorado 4; Mater Dei 9, Louisville 9 (M.D. 74-73); St. Lucy's 10, Bishop Montgomery 8; Fullerton 9, Katella 9 (F. 75-71).

Semifinals: Diamond Bar 12, Mater Dei 6; St. Lucy's 10, Fullerton 8.

Finals: Diamond Bar 10, St. Lucy's 8.

1-A DIVISION

Wild Card: Garden Grove 12, Savanna 6; Westridge 13, Saugus 5; San Luis Obispo 17, Oak Park 1.

First Round: Corona 18, Whittier 0; Garden Grove 11, San Bernardino 7; Montebello 10, Westridge 8; Righetti 11, La Reina 7; Keppel 15, Thacher 3; Victor Valley 9, Burroughs/R. 9 (V.V. 78-75); Western 9, La Quinta 9 (W. 77-71); Chadwick 15, Bellflower 3; Mayfield 18, Arroyo 0; La Mirada 13, La Sierra 5; La Serna 10, Kennedy 8; Arroyo Grande 15, St. Bonaventure 3; Cate 9, San Luis Obispo (C. 77-76); Quartz Hill 12, El Monte 6; Apple Valley 12, Norco 6; Valencia 15, Glenn 3.

Second Round: Corona 16, Garden Grove 2; Righetti 11, Montebello 7; Keppel 14, Victor Valley 4; Chadwick 11, Western 7; Mayfield 18, La Mirada 0; Arroyo Grande 15, La Serna 3; Cate 14, Quartz Hill 4; Valencia 13, Apple Valley 5.

Quarterfinals: Corona 12, Righetti 6; Chadwick 13, Keppel 5; Mayfield 14, Arroyo Grande 4; Cate 11, Valencia 7.

Semifinals: Corona 10, Chadwick 8; Mayfield 14, Cate 4.

Finals: Mayfield 14, Corona 4.

SMALL SCHOOLS DIVISION

First Round: aaA Cnonvent, Bye; Rim of the

World 14, Beaumont 4; San Dimas 17, Kern Valley 1; Walnut 10, San Jacinto 8; Campbell Hall 11, Orange/Kutheran 7; Etiwanda 16, Bishop 2; Northview 15, Whittier Christian 3; Cabrillo 17, Azusa 1; St. Joseph/S.M. 13, Buckley 1; South Hills 10, Flintridge Sacred Heart 8; Notre Dame/R. 12, Tehachapi 6; Brentwood 12, Paso Robles 6; Whitney 15, Garey 3; Big Bear 9, Gladstone 9 (B.B. 76-70); Yucaipa 10, Workman 8; Montclair, Bye.

Second Round: Ramona Convent 9, Rim of the World 9 (R.C. 80-77); San Dimas 9, Walnut 9 (S.D. 80-72); Etiwanda 10, Campbell Hall 8; Cabrillo 16, Northview 2; St. Joseph/S.M. 14, South Hills 4; Brentwood 16, Notre Dame/R. 2; Whitney 15, Big Bear 3; Montclair 18, Yucaipa 0.

Quarterfinals: San Dimas 9, Ramona Convent 9 (S.D. 70-69); Cabrillo 12, Etiwanda 6; St. Joseph/S.M. 17, Brentwood 1; Montclair 11, Whitney 7.

Semifinals: Cabrillo 15, San Dimas 3; St. Joseph/S.M. 13, Montclair 5.

Finals: St. Joseph/S.M. 11, Cabrillo 7.

SOUTHERN SECTION CIF/REEBOK/WILSON 1988 GIRLS INDIVIDUAL TENNIS CHAMPIONS

SINGLES

Keri Phebus, Corona del Mar
defeated

Nicole Hummel, San Marino 6-1, 7-7

DOUBLES

Michelle Foster/Page Bartelt,
Capistrano Valley
defeated

Shawn Ega/Michelle Deasy,
South Torrance, 6-2, 6-4

Reebok 

MAJOR STATE WIDE CIF CONTRIBUTING SPONSOR

Wilson

HERFF JONES
... a tradition of excellence



Confin Bros
Sporting Goods

**Sunny
Delight**



Round Table
Pizza Restaurants