



CIF-SS BULLETIN



VOL. 54, NO. 1

FALL 1991

CIF-SS BULLETIN GOES QUARTERLY IN 54TH YEAR

The CIF Southern Section Bulletin, first published in September of 1937 as the official journal of the organization, will be reduced from its previous print schedule of six editions annually to four per year, effective with the opening of the 1991-92 school year.

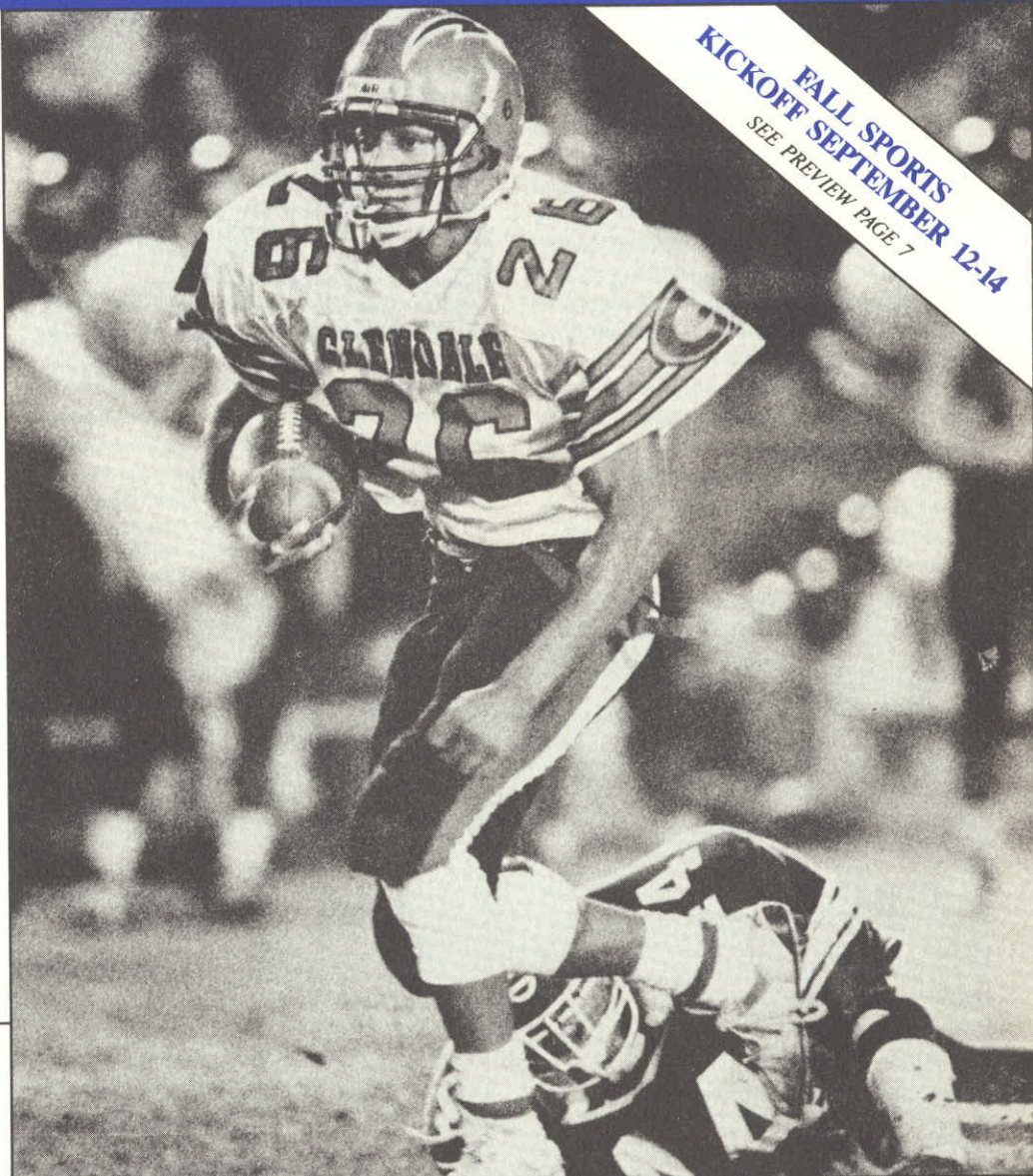
The publication schedule change is due in part to budget limitations and upon review of the needs, purposes and function of the organization.

The official record of CIF Southern Section activities throughout the school year, the CIF-SS Bulletin will maintain its purpose of making public the official minutes of all CIF-SS Council and Executive Committee Minutes, as well as recording all section individual and team-sport playoff and championship results.

The Bulletin will also continue to serve as a vehicle for interesting, informative and timely features dealing with the administration of interscholastic athletics.

The new schedule of publication will generally follow the seasons of sport, including a Fall edition (September); Winter edition (January); Spring edition (April) and Summer edition (June).

GLENDALÉ RUNNINGBACK Pathon Rucker, who led the CIF-SS in scoring and rushed for a whopping 1,877 yards as a junior, is a player to watch in the 1991 grid campaign.



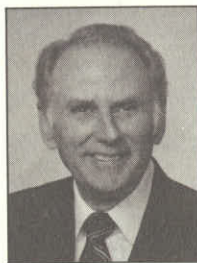
REEBOK, PEPSI SUPPORT CIF STATE-WIDE



*Serving High School Athletics
Since 1913*

see **CORPORATE** page 3

COMMISSIONER'S CORNER



ATHLETICS
AND
FITNESS

By Stan Thomas
Commissioner of Athletics

Greetings to all and a hearty welcome to the 1991-92 school year. I trust each of you — principals, athletic directors, coaches and support personnel — have enjoyed a relaxing summer vacation and return refreshed, eager and energized to go forth with another challenging and productive year of interscholastic athletic competition.

In recent years, the CIF-SS Office has made an effort to underscore an identifiable component of its program as a "theme" for the year. For the 1991-92 school year, we intend to bring awareness to the area of physical fitness and proper conditioning techniques for high-school aged youngsters.

On a nation-wide basis, physical fitness would seem to be at an extreme point of paradox. Whereas many experts say we are continuing to experience a "fitness boom" which began in earnest during the late 1970s, statistics provided by the President's Council on Physical Fitness reveal appalling facts about the health and fitness levels of school-aged youngsters.

Market trends continue to reveal that expenditures for exercise equipment, training shoes, active-wear, diet programs and nutrition products are at all-time highs. At the same time, 50 percent of girls and 30 percent of boys in the 6-17 age group are unable to complete a mile run in less than 10 minutes, an indication of poor cardiovascular fitness. Further, 55 percent of girls and 25 percent of boys in the same age group can't do a single pull-up, an indication of poor muscle strength. What's more, a recent study by the National Center for Health Services tells us that 40 percent of all school-aged children fall into one or more of the five risk categories of heart disease: inactivity (a failure to meet minimum prescribed exercise levels), obesity, high blood pressure, high cholesterol levels and/or hypertension.

We've all heard about how our modern society has helped to create the problem,

see COMMISSIONER'S CORNER page 8

EXECUTIVE COMMITTEE MINUTES June 21, 1991

The June meeting of the CIF Southern Section Executive Committee was called to order by President Dr. Tom Jacobson at 1:10 p.m., Friday, June 21, 1991 in the CIF Southern Section Office in Cerritos. All members were present with the exception of Ken Crowe, Edna Herring, Andy Patterson and Sheri Ross.

1. MINUTES — It was moved, seconded and passed to approve the minutes of the CIF-SS Executive Committee special meeting on May 29, 1991.

2. PRESIDENT'S UPDATE — Dr. Tom Jacobson discussed with the committee, Attorney Andy Patterson's relationship with the Southern Section. Following discussion, it was moved, seconded and passed to continue the relationship as it currently exists. Additionally, he announced the new location of the CIF State Office and covered the highlights of the upcoming Summer National Federation Meeting.

3. COMMISSIONER'S UPDATE — Commissioner Stan Thomas discussed using retired Executive Committee members on hearing panels. Following discussion, it was moved, seconded and passed to place the issue before the CIF-SS Council for their consideration. Additionally, Commissioner Thomas reviewed the possible need, in the future, for an office administrator to handle investigations, the high cost of arena rentals, office publishing four quarterly bulletins; the growth of the CIF-SS Golf Tournament, formation of the Area Realignment Committee; investigation of an alleged football violation at Canyon High School (CC); the next meeting of the committee to re-evaluate the summer dead period; the ongoing issue dealing with Montclair Prep; symposium being replaced with small regional meetings for the 1991-92 school year; Superintendent/Board Member Symposium on January 22, 1992; and the problem of obtaining playoff information sheets from schools prior

to the playoffs. Further, Commissioner Thomas discussed, beginning with the 1991-92 school year, requiring all schools to charge for playoff contests in the sports of Boys' and Girls' volleyball. Following discussion, it was moved, seconded and passed to approve required charging in Boys' and Girls' volleyball playoffs.

4. BOYS' ATHLETIC DIRECTOR UPDATE — Rich Ramirez, Boys' Athletic Director Representative, reviewed the status of Arizona schools joining the Desert Area leagues.

5. SUPERINTENDENT'S UPDATE — Cynthia Grennan, Superintendent Representative, discussed the California State Budget as it affects schools and reviewed the High School Task Force Report coming out in November 1991. Dr. Jim Fleming, State Superintendent Representative, reviewed budget cuts affecting high school athletics, reported on the status of an Orange County Section with the focus on the issues of governance and transportation.

6. TREASURER'S REPORT — Treasurer, Dr. Ken Gunn, reviewed the ABC School District Asset Management Analysis as it affects the status of the CIF-SS Office; updated the committee on the spring playoffs; the t-shirt end of the year report; and the CIF-SS Budget Year End Report.

7. STATE CIF REPORT — State CIF President Dr. Robert Packer, updated the committee on the passage of the State CIF 1991-92 Budget: By-Law 228 with modification; current C-Bed enrollment for state playoffs; transfer by-laws; announced the new State CIF Executive Committee members, Marie Ishida, Sue Kamiyama, Jim Olson and Charles Nelson; the defeat of proposed changes in By-Laws 600-601; passage of the wrestling weight classifications; Article 8, Sec. See EXECUTIVE COMMITTEE page 20

California Interscholastic Federation Southern Section

11011 Artesia Blvd. (90701) — P.O. Box 488 (90702)
Cerritos, California
(213) 860-2414 — (714) 826-5390 — FAX (213) 860-1692

OFFICERS

Dr. Tom Jacobson, Principal,
Corona del Mar High School, President

Dr. Robert M. Packer, Superintendent,
Duarte Unified, Past-President

Dr. Gary Smidderks, Superintendent-Principal,
Los Angeles Baptist High School, President-Elect

Dr. Ken Gunn, Principal,
Walnut High School, Treasurer

Mr. Stan Thomas, Commissioner of Athletics

BULLETIN EDITOR

Mr. Scott Cathcart
CIF-SS Director of Media and Public Relations

Bulletin Published Six Times Yearly
By CIF-Southern Section

CORPORATE

REEBOK, PEPSI COMMITTED TO HIGH SCHOOL ATHLETICS STATE-WIDE

State-wide corporate sponsors Reebok and Pepsi-Cola will once again be at the forefront of private-sector support for the many high school athletic activities of the California Interscholastic Federation, Southern Section during the 1991-92 school year. Throughout the state, Reebok will maintain its status as "primary title sponsor" of CIF programs, while Pepsi will continue to be labeled as "official sponsor" at championship events.

Reebok and the CIF enter the second year of a three-year, \$1.5 million corporate-support contract this fall. Now in its second contract with the CIF, the popular sport-shoe manufacturer has provided loyal support for high school athletics in the state since 1988.

"Positive sanctuaries . . . safe opportunities where student-athletes can go to be part of a team, as well as learn everyday lessons of discipline, motivation and self control are a necessary part of the educational environment," says Dwayne "Peanut" Harms, Reebok Team Services Coordinator. "Reebok is proud to be part of the Southern Section team, which provides positive outlets for the athletes of the section."

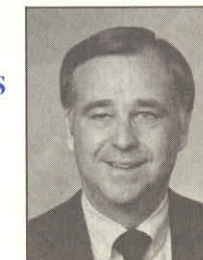
The CIF state wide, including the Southern Section, will reciprocate with the following services for Reebok during the 1991-92 school year: exclusive titling of all playoff and championship events; print advertising in all championship contest programs; inclusion of the company logo on all promotional materials; on-site signage (banners) at all championship events; public service announcements; exclusivity within the sport-shoe industry; two 30-second commercial spots on all official championship contest television broadcasts and/or cablecasts; and facilitation of direct-mail advertising campaigns.

"We are again pleased to work with state-wide sponsor Reebok International," notes CIF-SS Commissioner of Athletics Stan Thomas. "Through the years of its involvement, Reebok has consistently demonstrated a high regard and passion for the success of our member schools' student-athletes. Reebok is an organization that understands the importance of creating a positive environment that will ultimately benefit our leaders of tomorrow. In turn, it is this type of thinking that makes our organization successful and grateful."

See CORPORATE page 5

RULE REVIEW

REVISED
DESIGNATIONS
FOR
TRANSFER
RULES



By Dean Crowley
Associate Commissioner

Administrators of member-school athletic programs should pay particular attention to the area of transfer eligibility during the 1991-92 school year, considering major changes that have been made in the CIF Southern Section Blue Book.

The State CIF has re-written Rules 214 (transfer without change of residence) and 215 (change of residence), in addition to deleting Rule 221 (definition of legal guardian). Please note that the intent and interpretation of these rules have not changed, they have been streamlined for the purposes of clarity and simplicity of use.

Administrators are reminded of the

See RULE REVIEW page 19

SYNOPSIS OF 1991-92 BLUE BOOK CHANGES

The following is designed for the benefit and convenience of athletic administration and coaches in an effort to provide a capsule summary of the changes in the State CIF Southern Section Constitution and By-Laws. These changes were enacted by the State CIF Federated Council and/or the Southern Section Council throughout the course of the 1990-91 school term.

STATE REVISIONS

STATE CONSTITUTION ARTICLE 8 — New procedure adopted with reference to nomination, representation and election of members to the State CIF Executive Committee.

STATE BY-LAW ARTICLE 2 SECTION 212 (c) — Approved Foreign Exchange Programs updated for the 1991-92 school year. Also amended language for clarification.

STATE BY-LAW ARTICLE 2 SECTION 214-215-221 — By-law 214 re-written for clarification and the inclusion of the Section (221) dealing with legal guardianship. The hardship provisions for a waiver of 214 now follow in rule 215. All of 221 was eliminated due to its inclusion in Rule 214.

STATE BY-LAW 226 — New by-law written to provide competitive equity by giving the CIF some remedy in the event a lower court order (i.e., allowing a student to play when the CIF has found them ineligible, etc.) is later reversed and the CIF opinion upheld.

STATE BY-LAW 401 AMENDED TO READ —

"A student shall become ineligible for CIF competition for the remainder of the season in the respective sport for the following violations related to CIF competition:

- (f) Participating in any tryout for a professional team in any CIF approved sport from September 15 to June 15 unless:
 - (1) His/her principal has given written approval to a request for such participation from a professional team and the principal is not employed by the management of a professional team, and
 - (2) The tryout is limited to five students or less."

STATE BY-LAW 522 — Rule adopted with the intent of reducing the acts of violence directed at game officials. Under the provisions of the new rule, any student who physically assaults the person of a game or event official shall be banned from interscholastic athletics for the remainder of the student's eligibility.

STATE BY-LAW 523 — New by-law written dealing with issues, practices and/or procedures that affect perceived bias on the basis of sex.

STATE BY-LAW 702 — Canada now added to interstate competition sanctioning.

SOUTHERN SECTION REVISIONS

ARTICLE 7, SECTION 70.5 — Amendment limits the geographic representation on the CIF-SS Executive Committee to no more than two individuals. It should be noted that all present members on the Southern Section Executive Committee would be permitted to complete their current term of office.

ARTICLE 19 SECTION 1900 — Softball time limit clarified. The words "whichever comes first" eliminated from the previous language.

VARIOUS TEAM SPORT SECTIONS — In team sports, a tie shall count as a one-half win and a one-half loss as the criteria for a .500 record or better.

ALL SPORT SECTIONS — The August 1st summer dead period set to begin on August 1, 1991 was revoked.

WRESTLING — A dual meet championship in the sport of wrestling was approved in the present divisions 1A, 2A, 3A and 4A for the upcoming 1991-92 school year.

EXECUTIVE COMMITTEE SPECIAL MEETING MINUTES

May 29, 1991

A special meeting of the CIF-SS Executive Committee was called to order by Dr. Tom Jacobson at 8:44 a.m. on Wednesday, May 29, 1991 at the CIF-SS Office in Cerritos. All members were present with the exception of Dr. Robert Packer, Ray Monti and Maureen Sanders.

The purpose of the meeting was to review the placement of parochial high schools, Mater Dei, Rosary, Servite and Santa Margarita, in the Orange County Releaguings Area for the 1992-94 releaguings cycle. It should be noted that for the purposes of discussion, Servite and Rosary High Schools will be considered jointly, as they will be placed together in that each is a single gender school.

Dr. Jacobson reviewed with the Committee the purpose of the meeting which is to reconsider the previous action taken at the February 20, 1991 Executive Committee meeting and to determine findings for any subsequent action. Further, Dr. Jacobson reviewed the process and format of the meeting and discussed with the Committee and those in attendance, the criteria as listed in the Blue Book under Article 3 (Criteria for Area Placement).

I — MATER DEI HIGH SCHOOL — Mr. Lyle Porter, Principal of Mater Dei High School appeared before the Committee to request the placement of Mater Dei High School in the Orange County Releaguings Area for the following reasons:

- Academic time loss due to travel;
- The impact on adding classes in the afternoon due to excessive travel;
- The impact on the school budget due to increased transportation costs;
- Travel time to schools currently in the parochial areas and the congestion on the freeways during peak travel hours.

Additionally, Mr. Porter addressed the past practice of mixed leagues throughout the Section and that mixed leagues seem to have a more positive approach to the interscholastic athletic program.

II — ROSARY/SERVITE HIGH SCHOOLS — Father Patrick Donovan, Principal of Servite High School, and Kathryn Hennigan, Principal of Rosary High School, spoke in favor of the placement of Rosary and Servite High Schools in the Orange County Releaguings Area. Points emphasized by the Principals were:

- That both schools would like to compete in Orange County due to the fact that their students all come from the Orange County geographical area and travel is a major concern, along with transportation costs, the inconvenience to families who live and work in the County having to travel outside the County; the severe impact on academics due to the late arrival home; and lost class time due to early afternoon release.

Additionally, they stressed the point that parochial schools lack the financial base afforded public schools through district funding in addition to state funding.

III — SANTA MARGARITA HIGH SCHOOL — Monsignor Michael Harris, Principal of Santa Margarita High School, requested support from the Executive Committee for placement of Santa Margarita High School in the Orange County Releaguings Area in that the school is located in the southern part of Orange County, thus geographically making their school conducive to placement in the Orange County geographical area. He also discussed lost class time, better family and community support if placed in Orange County, excessive travel costs, etc.

Dr. Bill Brand, Principal of Trabuco Hills High School, representing the Orange County League Representatives, spoke in support of Santa Margarita's placement in Orange County, but was in opposition to the placement of Mater Dei and Servite/Rosary High Schools in the Orange County area for releaguings purposes. Reasons for opposition were unlimited attendance, boundaries of the parochial schools and the prescribed attendance boundaries of public schools, differences in school philosophy and admittance procedures, limited financial constraints placed on public schools, and that due to earlier parochial releaguings configurations, geography should not be considered as a reason for the placement of Mater Dei, Rosary and Servite High Schools in the Orange County Releaguings Area.

Following discussion, it was the decision of the Committee to take the four criteria for area placement and review each criteria as an independent item as a finding of fact for each school. The following reflects the findings of fact of the Committee relative to each of the schools:

VOTE ON SPECIFIC FINDING OF FACT

FINDING OF FACT M.D. R/S S. MARG.

- Initial request of member school—
(By Acclamation)
Yes Yes Yes
- Proximity of location of member schools within designated area and to each other
(8-4-1) (7-6)
(By Motion)
Yes Yes Yes
- Number of schools comprising designated area as that number impacts potential releaguings configurations
(8-5)
(By Motion)
Yes Yes Yes
- Special circumstances which might include anomalies related to enrollment, geography, special features of school athletic programs (i.e. all boys, all girls, etc.)
(8-5) (8-5)
(By Motion)
Yes Yes Yes

Following the findings of facts, utilizing the four criteria as listed in the Blue Book under "Criteria for Area Placement" as a finding of fact, a motion to place Mater Dei High School in the Orange County Releaguings Area was approved by a vote of 8-5; a motion to place Servite/Rosary High Schools in the Orange County Releaguings Area was approved by a vote of 7-6; a motion to place Santa Margarita High School in the Orange County Releaguings Area was approved by a vote of 10-2-1.

There being no further business to come before the Committee, the meeting was adjourned at 11:40 a.m.

Submitted by
DEAN CROWLEY,
ASSOCIATE COMMISSIONER

Approved by
STAN THOMAS,
COMMISSIONER OF ATHLETICS

CIF-SS COUNCIL SPECIAL MEETING MINUTES

May 29, 1991

A special meeting of the CIF-SS Council was called to order by Dr. Tom Jacobson at 1:15 p.m. on Wednesday, May 29, 1991 at the Sequoia Athletic Club in Buena Park. All leagues were present with the exception of Arrowhead, Baseline, Bay, Citrus Belt, Coast Valley, Heritage, Horizon, Marmonte, Metro, Mission Valley, Northern, Ocean, Pioneer, Prep, Sunrise, Tri-County, Valley, Westside and Whitmont. (It should be noted that 47 of the 66 leagues were in attendance for this special meeting.)

President Dr. Tom Jacobson reviewed with the Council background information as to the reason for the meeting, which (at the direction of the State CIF) was to reconsider and/or to determine findings of the issues relating to the placement of parochial schools

in the Orange County Releaguings Area. Dr. Jacobson reviewed the process and format of the meeting and discussed the vote and findings of the morning Executive Committee meeting whereby the CIF-SS Executive Committee placed Mater Dei, Servite, Rosary and Santa Margarita High Schools in the Orange County Releaguings Area.

Dr. Barry Escoe, Principal of Loara High School and representing the Empire League, made a motion to deny the placement of Mater Dei, Servite, Rosary and Santa Margarita High Schools in the Orange County Releaguings Area as determined by the CIF-SS Executive Committee at a meeting held earlier in the day.

Dr. Bill Brand, Principal of Trabuco Hills High

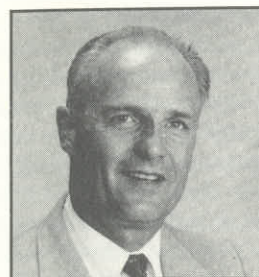
School and representing the Pacific Coast League, addressed the Council in support of the motion denying the high schools in the Orange County Releaguings Area. Issues addressed were attendance boundaries, financial aid to parochial students and previous parochial area releaguings configurations.

Also addressing the Council were:

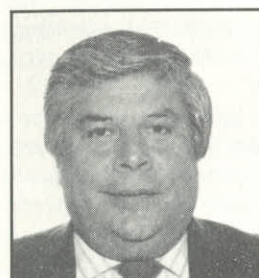
Lyle Porter, Principal of Mater Dei High School, speaking in support of an earlier decision of the Executive Committee, citing priority of academics, excessive travel time, financial burden of rising transportation costs, and greater parental support if permitted to participate in Orange County.

Don Martin, Principal of El Toro High School and
See **SPECIAL COUNCIL MINUTES** page 22

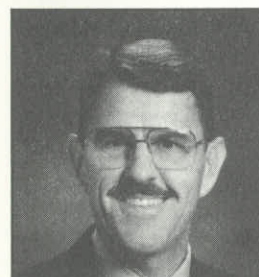
MEET YOUR AREA REPRESENTATIVE TO THE CIF SOUTHERN SECTION EXECUTIVE COMMITTEE



Don Hagen, Principal
Canyon Springs High School
CITRUS BELT AREA
Citrus Belt DeAnza Ivy
Mountain View San Andreas Sunkist



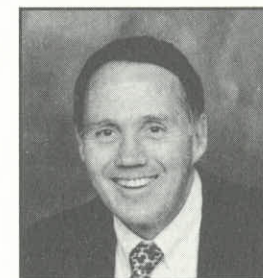
Frank Cano, Principal
Alhambra High School
FOOTHILL AREA
Foothill Mission Valley Pacific
Rio Hondo Suburban Whitmont



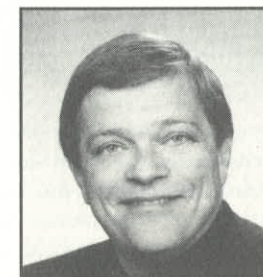
Tom Triggs, Principal
La Habra High School
ORANGE COUNTY AREA
Century Empire Freeway Garden Grove
Orange Pacific Coast Sea View
South Coast Sunset



Maureen Sanders, Principal
Paramount High School
COAST AREA
Bay Moore
Ocean Pioneer San Gabriel Valley



Ken Gunn, Principal
Walnut High School
MT. SAN ANTONIO AREA
Baseline Hacienda
Montview Sierra Valle Vista



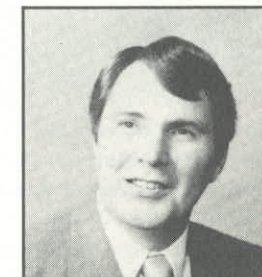
Fr. William Brelsford, Principal
St. Bernard High School
PAROCHIAL AREA
Angelus Camino Real
Horizon Mission San Fernando
Santa Fe Sunrise Sunshine



Ray Monti, Principal
Quartz Hill High School
DESERT AREA
Desert-Inyo Desert Valleys
Golden Hi-Lo



Debra Bradley, Principal
Cabrillo High School
NORTHERN AREA
Channel Coast Valley Condor Frontier
Los Padres Marmonte Northern
Tri-County Tri-Valley



Bill McKinley, Supt./Prin.
Whittier Christian High School
PRIVATE AREA
Academy Alpha Arrowhead
Christian Delphic Express Heritage
Liberty Metro Olympic Prep
Valley Victory Westside

CORPORATE

(Continued from page 3)

The Pepsi-Cola Company also enters the second year of a three-year contract, which will ultimately contribute \$600,000 to the CIF athletic program state wide.

"Pepsi-Cola West is proud to be associated with (the) CIF," points out Don Skeoch, Associate Marketing Manager, Pepsi-Cola Los Angeles. "It serves as a great way to express Pepsi's commitment to the future development and success of one of our most valuable resources: (the) teens of Southern California."

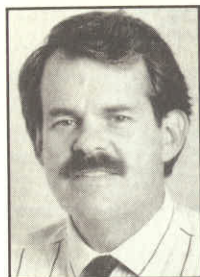
The CIF-Pepsi contract will provide the soft-drink company with industry exclusivity; appearance of the company logo on all promotional materials and program covers; print advertising in all championship programs; on-site signage (banners) at all championship events; public service announcements; sample opportunities; and direct-mail opportunities.

"The Southern Section greatly appreciates the support Pepsi provides for our interscholastic athletic programs,"

adds Thomas. "Heading into our second year of partnership, the Southern Section is delighted to promote such an outstanding organization. The Pepsi management obviously understands the importance of interscholastic programs and the positive effect their contribution can have upon them."

The CIF Southern Section salutes the continued support efforts of both Reebok and Pepsi, and encourages all member-school personnel and students to patronize their products whenever possible.

STERIODS: PREVENTION BEGINS WITH EDUCATION



By Bob Keisser
Long Beach
Press-Telegram

Steroid abuse has a new poster child — Lyle Alzado, Darth Raider, a self-made man courtesy of drug excess. After years of denial, both public and personal, Lyle woke up one day with his brain literally scrambled thanks to the juices he pumped into his body.

It's impossible to not feel compassion for Alzado. No one deserves this kind of pain, even when self-inflicted. And we're a compassionate society, one known to embrace its enemies. It's easy to cry and empathize with a loved one.

But we're also an incredibly naive and ignorant society, because this is not a new story. We've been hearing about steroid use and abuse for two decades. At about the same time it became the Breakfast of Champions, doctors were warning that steroids and their cousins, Human Growth Hormone and synthetic testosterone, could cause liver and kidney disease.

We ignored it. Now it's literally killing us.

Former NFL lineman Steve Courson was one of the few football players to admit to steroid use while playing. Now he needs a heart transplant, because steroids turned the fiber of his heart into a sponge.

Ohio high school player Benji Ramirez died of a heart attack at the age of 17. The coroner in the case concluded that steroid abuse contributed to his death.

Former wrestler Billy Graham says his bone deterioration was due to steroid overuse. Former football player and power lifter Bob Hazelton feels he lost his legs because of steroid abuse. South Carolina lineman Tom Chaikin became so irrational under the effects of steroid use that he threatened to kill a pizza deliveryman.

Dr. Robert Kerr of San Gabriel used to prescribe steroid programs for athletes, believing moderate doses would benefit the athlete and not cause side effects. But he stopped when he realized the stuff was too pervasive. His patients were supplementing his program with their own black market steroids.

We shut our eyes then, and are still doing it now. A media colleague recently said, in all sincerity, that it's never been proven that steroids are dangerous. This was *after* Alzado went public and his doctor intimated that steroids caused Lyle's brain cancer.

Two years after the IOC caught Ben

Johnson with a lifetime supply of steroids coursing through his veins, Olympic shot put medalist Randy Barnes was caught and suspended for two years.

Even though the strength coaches or consultants for four major colleges (Auburn, Clemson, Alabama and Vanderbilt) have been jailed the last few years for smuggling and distribution of steroids, the NCAA refuses to implement anything stronger than an ineffective random drug testing program.

In the wake of Alzado's claim that 75 percent to 90 percent of NFL players use steroids — a claim he also made five years ago — the NFL counters that he is overestimating use and that they have an efficient steroid drug testing program.

When did we become so naive? Why do we accept NFL-type responses as truth? Does our compassion get in the way of common sense?

Maybe. The point here is it's time to pull the ripcord on the current generation of abusers, liars and cheats, and focus on protecting our youth, the next generation.

No amount of talk is going to get the current abuser down from the ledge. Those athletes in the cycle believe they have too much to lose. There's no use trying to convince the NFL and NCAA and Major League Baseball and World Wrestling Federation to implement stiffer testing, either. It's poor P.R. to have a superstar test positive. Who knows how many fans will stay home if the NFL fields fewer 300-pound linemen and backs with 4.3 speed.

It's the children who need our help, anyway, if we can believe the statistics being assembled.

A 1988 Penn State study indicated that 7 percent of high school students used steroids. The American Academy of Pediatrics last year estimated usage at 8 percent. It has since risen to almost 10 percent. An administrator for a Southern California school district estimated that the rate of usage among male high school athletes in the state was between 30 percent to 40 percent!

One in 10 preps equates to about a million youngsters — in other words, more teens are using it than all the athletes currently in all pro sports.

What a wonderful legacy.

Poly High football coach Jerry Jaso has been as vigilant as he can when it comes to steroids. In the wake of the Alzado saga, he realizes he has to do more.

"Every Monday during the season, we have study hall for 90 minutes and touch on things other than football," said Jaso, who has an anti-steroid poster in the locker room. "We talk about drug abuse, all drugs. About the Scholastic Aptitude Test.

About what's happening in society. I'm one of those who believes the more education you can give someone, the more capable they are of making an informed decision.

"I tell them that steroids can cause liver and kidney disease. I also tell them it can cause testicular atrophy. That's one way to get a 16-year-old boy's attention."

Jaso will make Alzado's Sports Illustrated article mandatory reading this fall, and also wants to bring anti-steroid speakers to campus.

"I wanted to gag when Alzado said he was down to 210 pounds and felt like a wimp," said Jaso. "What does the fact that he weighs 210 have to do with his masculinity? It's an indication that our priorities are way out of whack. Steroids did more than cause cancer. They warped his sense of values."

The best thing you can see in Alzado's defense is that he's not alone. The best thing we can do in the future is pass this lesson on to our youth.

Reprinted with special permission from the Long Beach Press-Telegram, July 17, 1991.

WATER POLO GAME TIMING WILL NOT CHANGE

CIF Southern Section athletic directors and water polo coaches should take immediate notice that although the 1991 National Federation Water Polo Rule Book calls for new standards in the timing of games, all CIF-SS matches this season will retain the established playing time of past seasons.

Under the heading of "major rule revisions" in the new rule book, Rule 6-1-1 states: (the) Length of varsity games shall be 28 minutes (4 seven-minute quarters). Recommended length of junior varsity games is 24 minutes and freshman/sophomore games at 20 minutes.

However, due to the current financial crunch in education in the state of California, the late notice by the National Federation and the increased game cost for additional playing time, the Southern Section has NOT adopted the increased playing time for ANY level. For the 1991 season, current Blue Book Rule 2016 will continue to be in effect (i.e., varsity games shall be 6-minute quarters; junior varsity 5-minute quarters; frosh/soph 4-minute quarters).

The Southern Section will review this rule for possible change to take effect in the 1992 season.

FALL SEASON OPENS SEPT. 12-14

Competition in the 1991-92 school year will get underway in the CIF Southern Section the weekend of September 12-14.

Highlighting this fall season's activities will be the organization's 77th prep football season, in addition to competition in girls volleyball, boys and girls cross-country, water polo and girls tennis.

CIF-SS member schools will complete the 1990-92 cycle for league alignments and playoff groupings, while administrators throughout the section complete the bi-annual task of adopting new league and playoff-group assignments for 1992-94.

Volleyball, cross country, tennis, water polo and eight-man football teams will conclude regular-season schedules by Nov. 9, with the Southern Section CIF/Reebok Playoffs opening the following week. The 1991 football campaign will conclude all regular-season play by Nov. 16, with playoff contests opening Nov. 22.

Among the many outstanding CIF-SS athletes to keep an eye on this fall are: grid stars David Dotson of Moreno Valley Valley View, Pathon Rucker of Glendale, Richard Dice of Mission Hills Alemany, Joe Wells of Arroyo Grande and John Latu of Etiwanda; volleyball players Tara Kroesch of Newport Harbor, Cary Wendell of Arroyo Grande and Kristin Keller of Mammoth; water poloists Jeremy Laster of San Clemente and Brendan Grubbs of South Pasadena; and cross country runners Jeff Wilson of Newbury Park, J.J. Castner of Oak Park, Carrie Garretson of Rim of the World and Maribella Aparicio of Fillmore.

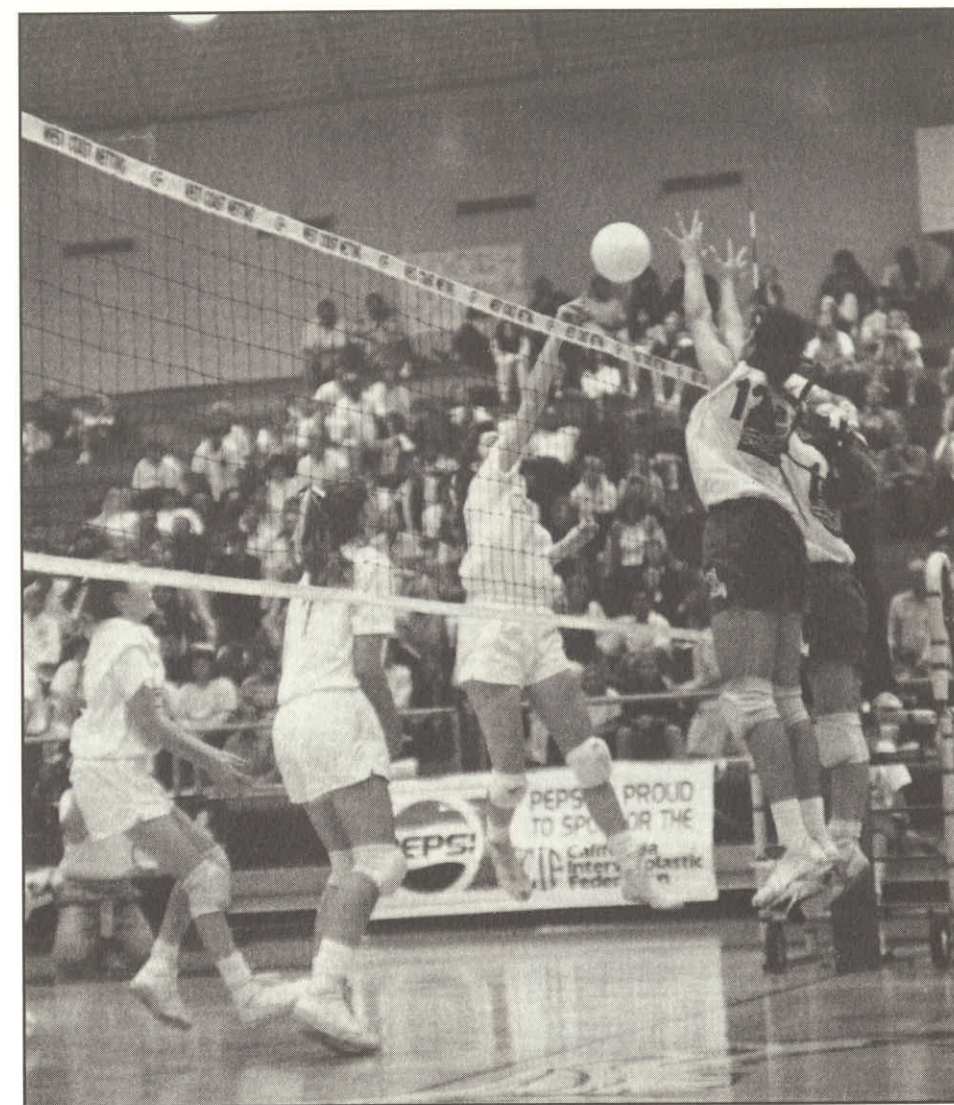


Photo by Al Martin

RETURNING STARS — Among the many outstanding fall-sport athletes returning for the 1991-92 school year are ALL-CIF volleyball players Jannifer Salanoa (12) of Long Beach Jordan and Kristen McMahon of Notre Dame Academy, in action during the 1990 4-A title match, won by Notre Dame in a thrilling five-game set.

PREP FOOTBALL RANKS HIGH IN NATIONAL SURVEY

For the many school administrators, booster clubs and even head varsity coaches who have wrestled with the dreaded subject of fund raising for high school football programs, take heart. Don't sell yourself — or your sport — short.

According to a recent study by the Sports Marketing Group of Dallas, high school football ranks as the sixth most popular spectator sport in the United States. Among the top 10, prep football falls into line just a notch below Major League Baseball and above NBA Pro Basketball. Additional sports falling well below the popularity of high school football (based upon percentage of U.S. population) include professional golf and tennis.

Says Nye Lavelle, Sports Marketing Group principal and president of the American Sports Marketing Association,

"The whole country doesn't revolve around New York, Los Angeles, Chicago, Dallas and other markets. Des Moines, Iowa; Odessa, Texas; and South Augusta, Georgia, make up the country, as well. And in some of those smaller markets, high school football is like having an NFL or NBA pro franchise."

Many communities throughout the vast geographic expanse of the CIF Southern Section could easily be a part of Lavelle's list.

Lavelle says advertisers should look to high schools for targeting an important consumer segment: 34 percent of the men surveyed, representing all income levels, gave high school football high marks. State high school athletic associations, such as the CIF Southern Section, are continuously suggesting that marketers might reach more

people on a cost-per-thousand with signage at high school stadiums than at major-league stadiums, arenas or ball parks.

The top five spectator sports nationally, according to the study, are (in descending order) NFL Football; College Football; Winter Olympics; Summer Olympics and Major League Baseball.

"Over the last seven years, there's been a tremendous growth in (advertising and marketing) dollars spent on sports at all levels," notes sports researcher Newton Frank, who helped compile the Sports Marketing Group study. "The bucks are so big these days that decisions are no longer made on the whim of the company chairman. (Sports marketing) is big business and people are looking at it much more carefully now."

NATIONAL STRENGTH AND CONDITIONING ASSOCIATION OFFERS TRAINING ASSISTANCE TO SCHOOLS, COACHES

Wouldn't it be great if athletic directors and coaches at CIF Southern Section schools were offered access to professional assistance in the development of effective programs in physical conditioning and strength training for their specific sport programs?



How about qualified help in the design and development of a weight training facility for little or no cost? Or the immediate availability of written materials, video tapes and/or lecture personnel to discuss subjects such as performance-enhancing drugs or off-season conditioning programs with members of their teams?

All of these things and much more are available to the staff members of high school athletic programs through the National Strength and Conditioning Association (NSCA). The NSCA is a non-

profit, educational organization dedicated to providing the most current, usable sport science information for the strength and conditioning professional.

Over 14,000 members in the United States and 40 other countries access the information made available by the NSCA through publications, clinics, conventions and courses, as well as through items offered in the annual NSCA catalog of educational resources.

If you are not currently a member of the NSCA, you are invited to join now. Membership will give you access to the NSCA's latest information and opportunities, including: the *NSCA Journal*, a bimonthly conditioning publication; the *NSCA Bulletin*, a monthly update of NSCA news and events; Certified Strength and Conditioning Specialists (CSCS) examinations, the only credential which identifies individuals who have acquired a knowledge of the scientific and practical aspects of strength training and conditioning; Practical Principals of Strength Training and Conditioning Course, State Strength Training and Conditioning Clinics, NSCA Na-

tional Conference; Reduced rates on instruction resources; Available scholarships, research grants and professional liability insurance; NSCA hotline, current information on employment opportunities.

The hallmark statement regarding the efforts of the NSCA is "optimum athletic performance through total conditioning."

CIF-SS member-school personnel can access the NSCA through Region V (Southern and Northern California, Nevada, Utah, Arizona, New Mexico and Hawaii) Director Mark Reiff, CSCS, strength and conditioning coach at Long Beach State and strength consultant at Los Alamitos Sport. Contact Reiff at (213) 431-9511 or 985-8526; or the NSCA national headquarters at P.O. Box 81410, Lincoln, NE 68501 (402) 472-3000.

Ed. Note: Jean Holloway, CSCS, an employee of the Los Angeles Unified School District, Southern California State Director of the NSCA and a contributing writer for Shape Magazine, has agreed to provide informative articles on fitness and conditioning for upcoming issues of the CIF-SS Bulletin.

COMMISSIONER'S CORNER

(Continued from page 2)

with junk food, television, and video games as the major culprits. But what is being done to correct the problem? Could it be we are passing young people through our public school system with little or no regard to exercise habits, only to turn around and sell them on some complex and expensive weight-reduction plan when they reach middle age?

Where do athletics fit into the equation? Although it can be said that each sport in our program involves some level of increased physical exertion, are the student-athletes who participate developing healthy habits for a lifetime of fitness? Are they being conditioned properly for their specific forms of competition? What has become more important on the scene in American high schools — winning a league championship or developing a broad-based physical fitness program for all students? Certainly these are hard questions.

To complete the picture, consider one of the most telling statistics of all provided by the President's Council on Physical Fitness: the fact that only 36 percent of American school children (grades 1-12) are enrolled in a daily physical education class of some form.

Without question, it is neither the purpose nor function of the CIF to dictate school curriculum. Our area of expertise

and influence is in extracurricular programs. However, where athletics and physical education are concerned, I believe the CIF does indeed have a vested interest. I am also of the opinion that the two can and should work in harmony with one another to help improve upon the current state of affairs.

As a former high school principal, I can attest to the fact that school-based physical education programs have taken a beating since the early-seventies, when the subject underwent a de-emphasis throughout our state with the passage of Senate Bill 16. Because it remains first in line for budget-cut considerations (as with extracurricular activities) and due to the fact it is only required through grade 10 in the great majority of our districts, first-class P.E. programs have become a thing of the past in many schools. That is not to say many schools aren't doing a terrific job operating on a shoestring; it's strictly an across-the-board evaluation.

To make matters worse, many P.E. classes are often too crowded to provide effective instruction, because they've become a "dumping ground" to relieve classroom loads. Physical Education shouldn't be considered a "recess" period. Rather, students should be provided with instruction and required to show improvement in regular evaluation periods.

The deterioration of physical education

programs has had an effect on athletics because it has created a serious void in the availability of qualified personnel to instruct — as athletic coaches — in the area of physical conditioning for specific sports. Records from both the University of California and the California State University system indicate a substantial decrease in the number of physical education majors since the late 60s, and it's not too difficult to figure out why. Jobs are hard to find these days for P.E. teachers and the majority of staff coaching positions require an academic subject credential. A prime example can be found right in the CIF-SS Office, where our listing of coaches wanted by member schools rarely offer teaching opportunities in physical education.

As a result, there are fewer professionally trained personnel in the disciplines of physical education, and thus, fewer competent people to fill coaching positions that require knowledge in the area of physical conditioning programs for specific sports.

The CIF Southern Section, in cooperation with organizations such as the Amateur Athletic Foundation of Los Angeles, the National Sports Conditioning Association and the President's Council on Physical Fitness, will make a concerted effort to bring attention and awareness to basic physical fitness throughout the 1991-92 school year. Please look for related articles in coming editions of the CIF-SS Bulletin.

CABRILLO PRINCIPAL DEBRA BRADLEY JOINS EXECUTIVE COMMITTEE

The CIF Southern Section is pleased to announce the addition of Dr. Debra Bradley, Principal of Cabrillo High School in Lompoc to the CIF-SS Executive Committee, effective with the opening of the 1991-92 school year.

Appointed by the CIF-SS Council at its Spring meeting, Bradley will replace Ventura Buena High School Principal Mike Shanahan as the Northern Area Representative to the Executive Committee. The Northern area constituency includes the Channel, Coast Valley, Condor, Frontier, Los Padres, Marmonte, Northern, Tri-County and Tri-Valley Leagues.

Bradley, who began her current position at Cabrillo High School with the opening of the 1986-87 school year, has been employed in the field of educational administration since 1973. Bradley began her career as a teacher and then assistant principal at Ramona Intermediate School in the Bonita Unified School District of San Dimas.

In 1974, she moved on to assume a counseling position at Glendale High School, before moving on to become Dean of Students at Hoover High School in Glendale in 1977. In 1982, she was elevated to the position of Assistant Principal-Administrative, followed in 1984 by being appointed to the position of Assistant Principal-Instruction at Hoover.

Along with her duties as principal at

Cabrillo High, Bradley has also served as a visiting professor in the Department of Educational Administration at Cal Poly San Luis Obispo, as well as a Superintendent Appointee with the Lompoc Unified District, as liaison between business and the district for the establishment of Industry Education Council (IEC).

In addition to serving as the Los Padres League Council Representative for the past two years, Bradley's experience with the CIF Southern Section includes membership on the playoff groupings committee of 1988, as well as coordinator of the Northern Area Releaguings Committee for both the 1990-92 and 1992-94 releaguings cycles.

A 1970 graduate of Cal State Los Angeles, Bradley went on to receive her master's degree in school administration and supervision at CSULA in 1974. In 1987, she completed work on her educational doctorate in administration and policy planning at the University of Southern California.

Area representatives of the Executive Committee are elected to four-year terms by the leagues specified in their area. The Executive Committee is the administrative body of the CIF-SS, whose purpose is to enforce all rules and regulations as approved by the Council, and to consider all questions related to violation of such rules and regulations.



Debra Bradley
New Executive Committee Member

**"ONE MAN PRACTICING
GOOD SPORTSMANSHIP
IS FAR BETTER THAN
FIFTY OTHERS
PREACHING IT."**

— Knute Rockne

CIF SOUTHERN SECTION STAFF TO CONDUCT REGIONAL ORIENTATION WORKSHOPS

In an effort to provide better service and improve lines of communication with staff personnel involved in member-school interscholastic athletic programs, the CIF Southern Section Administrative Staff will conduct six regional orientation workshops in September and October.

The regional workshops will provide information concerning the purpose, function and operation of the CIF Southern Section Office, in addition to a review of the rules and regulations governing interscholastic athletic programs throughout the section and state. Member-school principals, athletic directors, coaches and athletic secretaries will all benefit from the in-service presentations.

"The regional workshop concept will provide a great opportunity for the staff personnel of our member schools," notes CIF-SS Commissioner of Athletics Stan Thomas. "In the past, we have conducted programs of this type in locations near the CIF-SS Office, realizing the difficulties many of our schools face in attending,

given the vast geographic expanse of the section."

Each of the regional workshops will include a general meeting, break-out sessions for specific groups and a question-and-answer period to allow member-school staffers the opportunity to raise discussion topics of their own interest. The orientation workshops will be conducted in lieu of the annual New Principal and Athletic Director's Orientation and Athletic Administrator's Symposium for the 1991-92 school year.

Member-school administrators are advised to watch for a special informational flyer from the CIF-SS Office regarding scheduling, reservations (requested by Sept. 17) and the agenda for the regional workshops. For further information regarding the regional workshops, contact Kay Larson at the CIF-SS Office (213) 860-2414 or (714) 826-5390.

Following is the Athletic Administrators Regional Workshop Schedule . . .

SOUTH BAY-COAST AREA

Tuesday, Sept. 24 - 9:00 a.m.

Long Beach Jordan High School
6500 Atlantic Blvd., Long Beach

FOOTHILL-CITRUS AREA

Tuesday, Oct. 1 - 9:00 a.m.

Glendora High School
1600 E. Foothill Blvd., Glendora

ORANGE COUNTY AREA

Tuesday, Oct. 8 - 9:00 a.m.

Irvine High School
4321 Walnut Ave., Irvine

CITRUS BELT-RIVERSIDE-DESERT AREA

Tuesday, Oct. 15 - 9:00 a.m.

Canyon Springs High School
23100 Manzanita Ave., Moreno Valley

UPPER DESERT AREA

Tuesday, Oct. 22 - 9:00 a.m.

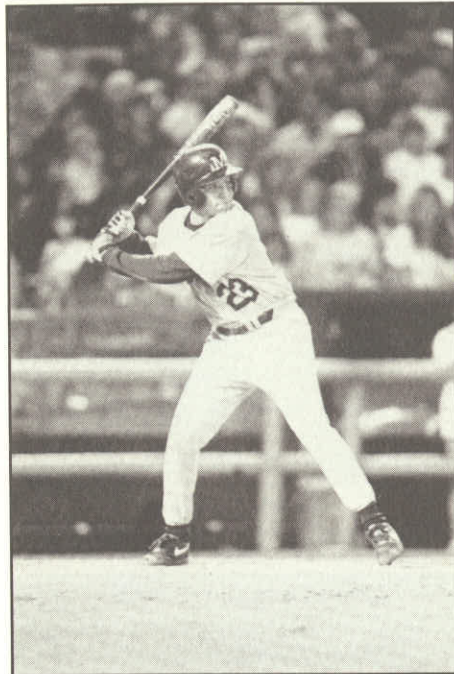
Quartz Hill High School
6040 West Ave. L, Quartz Hill

NORTHERN AREA

Tuesday, Oct. 29 - 9:00 a.m.

San Marcos High School
4750 Hollister Ave., Santa Barbara

SOUTHERN SECTION CIF/REEBOK 1991 BASEBALL PLAYOFF RESULTS



5-A DIVISION

Wild Card Round: Katella 5, Servite 4.

First Round: Esperanza 9, Santa Monica 1; Loyola 9, Crespi 3; Baldwin Park 9, Schurr 1; Crescenta Valley 13, Fontana 3; Simi Valley 16, Glendale 2; Millikan 14, Hart 5; Katella 2, Beverly Hills 1; Fountain Valley 11, Eisenhower 4; Edison 7, Poly/R. 1; Burbank 2, West Covina 1; L.B. Jordan 4, St. John Bosco 3; Channel Islands 3, Arcadia 2; El Dorado 4, Hawthorne 3; Diamond Bar 7, St. Paul 2; Thousand Oaks 5, Ocean View 3; Lakewood 7, St. Bernard 0.

Second Round: Esperanza 7, Loyola 2; Baldwin Park 12, Crescenta Valley 7; Millikan 3, Simi Valley 2; Fountain Valley 6, Katella 4; Edison 8, Burbank 7; L.B. Jordan 3, Channel Islands 2; Diamond Bar 5,

El Dorado 4; Lakewood 5, Thousand Oaks 4.

Quarterfinals: Esperanza 9, Baldwin Park 8; Millikan 3, Fountain Valley 1; Edison 8, L.B. Jordan 5; Diamond Bar 5, Lakewood 3.

Semifinals: Millikan 6, Esperanza 0; Edison 4, Diamond Bar 3.

Finals: Millikan 8, Edison 2.

4-A DIVISION

Wild Card Round: Capistrano Valley 2, Redondo 1; Chino 5, Palm Springs 3; La Habra 4, Magnolia 1; Paramount 7, South Torrance 0.

First Round: Arlington 2, La Puente 1; Brea Olinda 12, Damien 5; Capistrano Valley 5, El Modena 3; Troy 9, Cerritos 2; Northview 1, Chino 0; Arroyo Grande 3, West Torrance 1; El Toro 3, Rolling Hills 0; Rio Mesa 6, Righetti 1; Gahr 3, La Habra 0; Canyon/A. 3, Ramona 1; Torrance 5, Mira Costa 3; Dos Pueblos 5, Glendora 2; Hueneme 4, Lompoc 0; Paramount 4, Dana Hills 3; Savanna 2, Walnut 1; Sunny Hills 3, Santa Ana Valley 0.

Second Round: Arlington 10, Brea Olinda 0; Capistrano Valley 2, Troy 1; Arroyo Grande 10, Northview 0; El Toro 5, Rio Mesa 4; Canyon/A. 5, Gahr 1; Dos Pueblos 6, Torrance 4; Paramount 4, Hueneme 2; Sunny Hills 8, Savanna 7.

Quarterfinals: Capistrano Valley 4, Arlington 1; El Toro 6, Arroyo Grande 5; Canyon/A. 8, Dos Pueblos 5; Paramount 5, Sunny Hills 2.

Semifinals: Capistrano Valley 18, El Toro 5; Canyon/A. 5, Paramount 2.

Finals: Capistrano Valley 8, Canyon/Anaheim 3.

3-A DIVISION

Wild Card Round: Trabuco Hills 11, Corona del Mar 6; Victor Valley 5, Palmdale 3; Arroyo 2, Montclair 1; Norwalk 5, California 3.

First Round: Ontario 13, Harvard 7; Pioneer 2, Apple Valley 0; Laguna Hills 3, Saddleback 2; Corona 7, Palm Desert 4; Santiago 8, Mayfair 7; Saugus 7, St. Francis 6; Central 5, Norco 2; Rosemead 2, Trabuco Hills 1; La Serna 2, Victor Valley 1; La Mirada 6, El Monte 2; Antelope Valley 12, Hesperia 8; La Quinta 5, Garey 1; Tustin 21, Arroyo 0; Estancia 5, Norwalk 3; Calexico 10, Colton 8, El Segundo 1, Garden Grove 0.

Second Round: Ontario 6, Pioneer 4; Corona 2, Laguna Hills 1; Saugus 8, Santiago 3; Central 4, Rosemead 3; La Mirada 2, La Serna 1; Antelope Valley 7, La Quinta 6; Tustin 7, Estancia 1; Calexico 5, El Segundo 4.

Quarterfinals: Ontario 3, Corona 0; Central 5, Saugus 1; La Mirada 11, Antelope Valley 6; Tustin 7, Calexico 6.

Semifinals: Ontario 8, Central 4; La Mirada 3, Tustin 2.

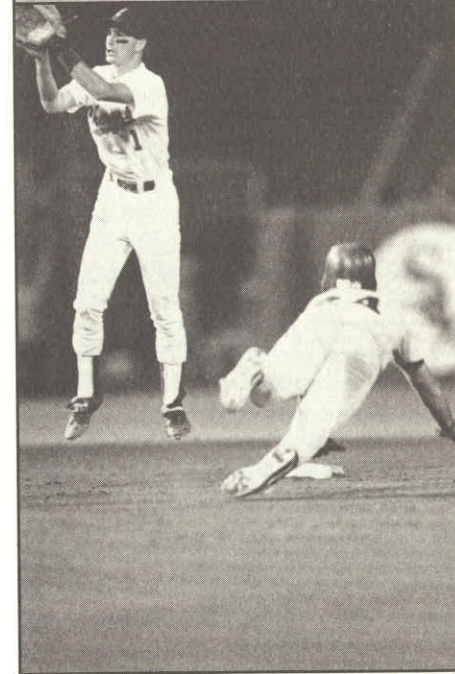
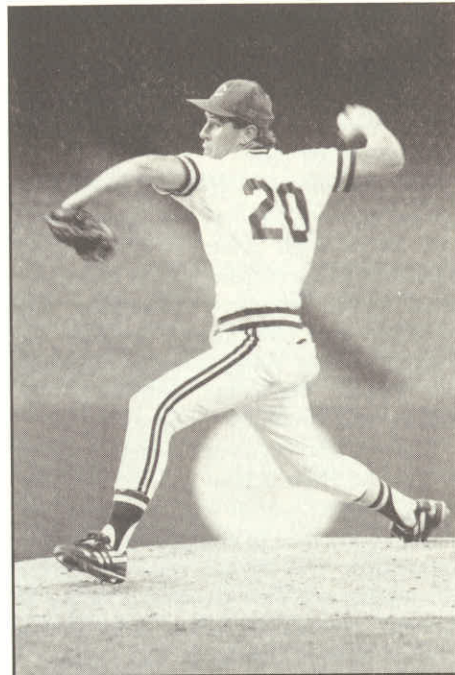
Finals: Ontario 9, La Mirada 2.

2-A DIVISION

Wild Card Round: Sierra Vista 6, Santa Paula 4; Monrovia 5, Temecula 4; San Marino 22, Cathedral 2; Santa Clara 3, Paso Robles 2; Mary Star of the Sea 16, St. Anthony 6.

First Round: Norte Vista 10, Sierra Vista 3; Atascadero 17, Miraleste 2; Monrovia 14, Cantwell 2; Fillmore 6, Pomona 2; Yucaipa 1, Bosco Tech 0; San Marino 6, St. Joseph/S.M. 2; Santa Clara 3, Gladstone 2; Temple City 7, Mary Star of the Sea 5.

Quarterfinals: Norte Vista 12, Atascadero 2; Fillmore 5, Monrovia 2; Yucaipa 10, San Marino 2; Temple City 1, Santa Clara 0.



Photos by Al Martin

Semifinals: Norte Vista 12, Fillmore 2; Yucaipa 12, Temple City 3.

Finals: Yucaipa 6, Norte Vista 2.

1-A DIVISION

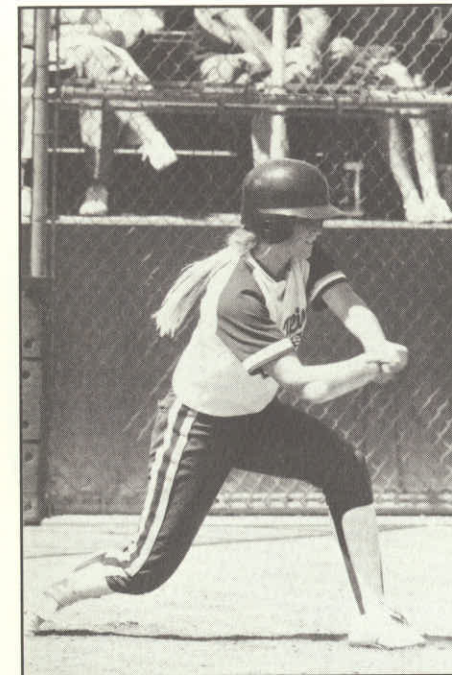
Wild Card Round: Buckley 3, Oak Park 1; Orange Lutheran 4, Western Christian 0; Crossroads 10, Maranatha 3; Kern Valley 3, Serrano 0.

First Round: Montclair Prep 13, Buckley 2; Mission Prep 6, Moorpark 5; Faith Baptist 12, Whitney 9; San Jacinto 10, Desert 0; Coast Union 4, Tehachapi 2; Orange Lutheran 17, Beaumont 0; Crossroads 9, St. Bonaventure 7; Valley Christian/C. 9, Kern Valley 0.

Quarterfinals: Montclair Prep 16, Mission Prep 6; San Jacinto 15, Faith Baptist 6; Orange Lutheran 6, Coast Union 4; Crossroads 7, Valley Christian/C. 1.

See **BASEBALL RESULTS** page 23

SOUTHERN SECTION CIF/REEBOK 1991 SOFTBALL PLAYOFF RESULTS



Photos by Al Martin

4-A DIVISION

First Round: Hart 4, Diamond Bar 3; Glendale 3, Hawthorne 0; Fontana 6, Sonora 3; Brea Olinda 6, Hoover 0; Rowland 3, Canyon/A. 1; Sunny Hills 4, Mission Viejo 0; Lakewood 4, Culver City 0; Irvine 5, Villa Park 0; Charter Oak 5, Redlands 0; Millikan 1, Burroughs/B. 0; Savanna 1, El Toro 0; Arcadia 1, La Habra 0; Crescenta Valley 3, Burbank 2; Santa Monica 6, L.B. Wilson 0; Riverside Poly 3, Fullerton 1; Foothill 3, Anaheim 2.

Second Round: Hart 4, Glendale 0; Fontana 3, Brea Olinda 2; Sunny Hills 4, Rowland 2; Irvine 5, Lakewood 1; Charter Oak 1, Millikan 0; Arcadia 2, Savanna 0; Crescenta Valley 4, Santa Monica 0; Foothill 4, Anaheim 1.

Quarterfinals: Fontana 11, Hart 2; Irvine 3, Sunny Hills 0; Charter Oak 1, Arcadia 0; Foothill 2, Crescenta Valley 0.

Semifinals: Irvine 2, Fontana 0; Foothill 1, Charter Oak 0.

Finals: Irvine 1, Foothill 0.

3-A DIVISION

Wild Card Round: Ramona 4, Montclair 0; Mayfair 7, Pioneer 2; Bishop Montgomery 11, North Torrance 0; Saugus 3, Glendora 1.

First Round: Don Lugo 17, Workman 0; Moreno Valley 6, Ganesha 5; Ramona 5, Laguna Hills 2; Woodbridge 2, Torrance 0; Walnut 8, El Rancho 0; Bellflower 6, Palos Verdes 0; Quartz Hill 5, Mayfair 3; Alemany 6, Mira Costa 0; La Mirada 5, Bishop Montgomery 3; Rolling Hills 10, Estancia 4; South Hills 2, Canyon/C.C. 0; St. Paul 2, Trabuco Hills 1; Arlington 3, Saddleback 0; Chino 3, Etiwanda 2; South Torrance 2, University 0; Santa Fe 1, Saugus 0.

Second Round: Don Lugo 2, Moreno Valley 0; Woodbridge 4, Ramona 2; Walnut 2, Bellflower 1; Quartz Hill 1, Alemany 0; La Mirada 5, Rolling Hills 0; St. Paul 1, South Hills 0; Arlington 2, Chino 0; South Torrance 1, Santa Fe 0.

Quarterfinals: Don Lugo 2, Woodbridge 0; Quartz Hill 4, Walnut 3; La Mirada 2, St. Paul 1; South Torrance 3, Arlington 2.

Semifinals: Quartz Hill 7, Don Lugo 4; La Mirada 4, South Torrance 1.

Finals: La Mirada 2, Quartz Hill 0.

2-A DIVISION

Wild Card Round: Atascadero 5, Bell-Jeff 3.

First Round: Corona 6, Mountain View 0; Central 6, Sierra Vista 5; Flintridge Sacred Heart 6, St. Anthony 0; St. Joseph/S.M. 23, Rosemead 0; Notre Dame/R. 1, Barstow 0; Big Bear 10, Coachella Valley 0; Temple City 7, Pius X 6; Hesperia 11, Serrano 0; Paso Robles 2, South Pasadena 0; El Segundo 5, Miraleste 4; Notre Vista 2, San Jacinto 0; Arroyo 4, Azusa 0; Palm Desert 3, La Sierra 2; Norco 9, Apple Valley 2; San Dimas 2, Centennial/Corona 1; La Canada 7, Atascadero 1.

Second Round: Corona 4, Central 1; St. Joseph/S.M. 2, Flintridge Sacred Heart 1; Notre Dame/R. 7, Big Bear 0; Hesperia 1, Temple City 0; Paso Robles 4, El Segundo 0; Norte Vista 3, Arroyo 0; Palm Desert 1, Norco 0; La Canada 5, San Dimas 1.

Quarterfinals: Corona 6, St. Joseph/S.M. 0; Hesperia 3, Notre Dame/R. 0; Paso Robles 5, Norte Vista 0; La Canada 10, Palm Desert 4.

Semifinals: Corona 4, Hesperia 1; Paso Robles 3, La Canada 1.

Finals: Corona 2, Paso Robles 1.



1-A DIVISION

First Round: La Reina Bye; Bishop 5, Flintridge Prep 2; St. Matthias 7, Immaculate Heart 6; Santa Paula 5, L.A. Baptist 2; Ayala 2, Westridge 1; La Sierra Academy 22, Connelly 1; Alverno 5, Whitney 4; Western Christian 16, Sherman Indian 0; St. Bonaventure 13, Montclair Prep 5; Whittier Christian 11, Calvary Chapel/S.A. 6; Valley Christian/C. 3, Mary Star of the Sea 0; Pasadena Poly 7; Tehachapi 2; Moorpark 3, Ramona Convent 1; Notre Dame Academy 13, Nordhoff 4; Fillmore 2, Village Christian 0; Paraclete 4, Rio Hondo Prep 0.

Second Round: La Reina 11, Bishop 2; Santa Paula 8, St. Matthias 0; Ayala 10, La Sierra Academy 1;

See **SOFTBALL RESULTS** page 23

SOUTHERN SECTION CIF/REEBOK 1991 BASEBALL CHAMPIONS

5-A DIVISION
Millikan

4-A DIVISION
Capistrano Valley

3-A DIVISION
Ontario

2-A DIVISION
Yucaipa

1-A DIVISION
Montclair Prep

SMALL SCHOOLS DIVISION
Linfield

SOUTHERN SECTION CIF/REEBOK 1991 SOFTBALL CHAMPIONS

5-A DIVISION
Camarillo

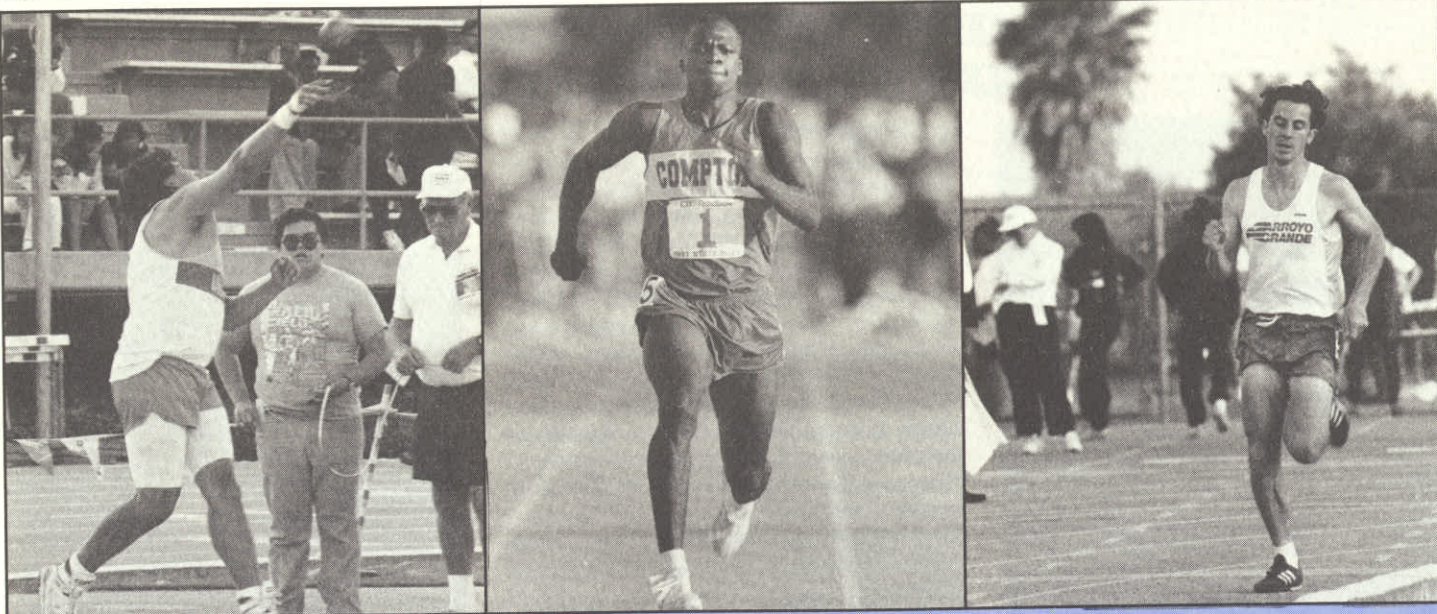
4-A DIVISION
Irvine

3-A DIVISION
La Mirada

2-A DIVISION
Corona

1-A DIVISION
La Reina

SMALL SCHOOLS DIVISION
Inland Christian



Photos by Al Martin, Kirby Lee

SOUTHERN SECTION CIF/REEBOK
BOYS 1991 TRACK & FIELD CHAMPIONS

EVENT	4-A DIVISION	3-A DIVISION	2-A DIVISION	1-A DIVISION
100 Meters	Ricky Carrigan Compton 10.48	Ashaundai Smith Etiwanda 10.80	Matthew Harding San Dimas 10.91	Gentry Bradley Pius X 10.74
200 Meters	Ricky Carrigan Compton 21.30	Jack Bellamy Thousand Oaks 21.70	Matthew Harding San Dimas 21.38	Kevin Triplehorn Moorpark 21.43
400 Meters	Edwin Herzey Compton 47.55	Roshawn Sims Esperanza 48.08	Gerald McCladdie Centennial/Compton 47.67	Chiron Hart Brethren Chr. 50.23
800 Meters	Bryan Woodward Long Beach Poly 1:53.12	Mike Terry El Modena 1:52.95	Alex Aguilar Norte Vista 1:55.80	Kealoah Stokes Twentynine Palms 1:57.34
1,600 Meters	T.J. Reyes Lynwood 4:16.09	Louie Quintana Arroyo Grande 4:09.28	Joe Garcia Northview 4:18.13	Carlos DeQuando San Marino 4:22.21
3,200 Meters	Dave Hartman Canyon/C.C. 9:05.84	James Menon San Luis Obispo 9:05.81	Mark Gonzales La Habra 9:20.35	Peter Nichols San Marino 9:18.08
110-Meter HH	Dominique Arnold Long Beach Wilson 14.45	Adrian Brown Huntington Beach 14.34	Ryan Kieling Crespi 14.68	Donald Linsey Cabrillo 15.13
300-Meter IH	Demond Smith Hawthorne 37.97	Don Jackson Duarte 38.37	Steve DeBerry San Dimas 38.76	Craig Deardon Morro Bay 39.01
400-Meter Relay	Hawthorne 41.81	Thousand Oaks 42.83	Mater Dei 42.90	Cabrillo 43.56
1,600-Meter Relay	Muir 3:21.98	Foothill 3:19.83	Centennial/Compton 3:16.04	Pius X 3:25.39
High Jump	Chris Olsson-O'Neill Rubidoux 6-8	Kevin Carlson Katella 6-10	Terry Mann Sunny Hills 6-5	Robert Robinson Cabrillo 6-7
Long Jump	Mike Wright Glendale 23-8 1/4	Tyrone Edwards Nogales 23-1 1/4	Edward Turner Morningside 22-9 3/4	Robert Robinson Cabrillo 22-4 1/4
Pole Vault	Miles Reynolds Hemet 14-6	Scott Tetreault Arroyo Grande 14-6	Dan Kerker Loyola 14-6	Jesse Stern Harvard 13-6
Triple Jump	Anthony Bartley Lynwood 48-2 1/2	Brian Valdez El Modena 45-6 1/2	Vince Church Kennedy 47-6 1/2	Robert Robinson Cabrillo 46-8 1/2
Shot Put	Tyson Lingenfelter Upland 55-6	Mark Parlin Esperanza 66-7 1/2	Todd Wright Sierra Vista 55-7 1/4	Donald Willis Cabrillo 57-11
Discus Throw	Mile Balian Damien 166-1 1/2	Brian Righetti Ventura 173-0	Gabriel Torre Notre Dame/R. 174-3	robert Degnan Atascadero 174-11 1/2

FINAL TEAM STANDINGS

PLACE	4-A DIVISION	3-A DIVISION	2-A DIVISION	1-A DIVISION
1	Compton - 46	Thousand Oaks - 59	Centennial/Compton - 58	Cabrillo - 99
2	Rubidoux - 40	Esperanza - 55	San Dimas - 52	Morro Bay - 52
3	Muir - 38	Arroyo Grande - 32	Valencia - 35	Twentynine Palms - 45.5

SOUTHERN SECTION CIF/REEBOK
GIRLS 1991 TRACK & FIELD CHAMPIONS

EVENT	4-A DIVISION	3-A DIVISION	2-A DIVISION	1-A DIVISION
100 Meters	Tamika Bradfield Dominguez 11.89	Marion Jones Rio Mesa 11.30	Santisha Arnold Morningside 11.96	Jennifer Frank Oak Park 12.32
200 Meters	Tamika Bradfield Dominguez 23.94	Marion Jones Rio Mesa 23.06	Santisha Arnold Morningside 24.59	Jennifer Frank Oak Park 24.84
400 Meters	Tammera McLin Eisenhower 56.33	Marion Jones Rio Mesa 52.91	LaShawn Stringer Morningside 55.67	Nikki Shaw Fillmore 58.45
800 Meters	Sheria Moses Ramona 2:15.76	Shelley Taylor Edison 2:12.68	Kenara Mayberry St. Bernard 2:15.49	Nikki Shaw Fillmore 2:15.58
1,600 Meters	Erica Sumi L.B. Wilson 4:57.36	Deena Drossin Agoura 4:53.86	Heather Killeen Valencia 5:06.02	Nikki Shaw Fillmore 5:00.00
3,200 Meters	Lucinda Reyes Lakewood 11:00.79	Deena Drossin Agoura 10:40.27	Carrie Garritson Sunny Hills 10:51.68	Amber Parkinson Orange Lutheran 10:49.87
100 Meter LH	Akua Sutherland Muir 14.78	Phetima woods Duarte 14.60	Sonoma Nickson Morningside 14.42	Renee Wright Orange Lutheran 15.19
300 Meter LH	Lavinia Hendon Upland 45.33	Elinor Tolson Fountain Valley 43.85	Nicole Haynes Bishop Montgomery 44.61	Renee Wright Orange Lutheran 46.47
400-Meter Relay	Muir 47.09	Rio Mesa 48.39	Morningside 46.03	Pius X 48.81
1,600-Meter Relay	Long Beach Poly 3:53.91	Edison 4:03.68	Morningside 3:49.14	Blair 4:05.36
High Jump	Jennifer Maggard Hemet 5-3	Beth Byron Villa Park 5-6	Darci Morrison Laguna Hills 5-6	Sabrina Johnson Cabrillo 5-3
Long Jump	Heather Sterling Mission Viejo 17-4 3/4	Alycia Burnham Rio Mesa 18-0 1/4	Juliana Yendork Walnut 20-1 3/4	Tomika Hart Monrovia 17-10 1/2
Triple Jump	Akua Sutherland Muir 37-0 3/4	Babette Huley Ontario 36-0 3/4	Juliana Yendork Walnut 43-6	Beth Ault St. Joseph/S.M. 35-1 1/4
Shot Put	Nada Kavar Crescenta Valley 38-10	Crystal Brownlee Westlake 42-2 1/4	Myra Smith Workman 42-2	Jennifer Riney La Canada 37-2 1/2
Discus Throw	Celeste McVey Redlands 132-1	Carrie Herman Etiwanda 144-5	Myra Smith Workman 132-5	Barnethia Mansell Oak Park 126-3

FINAL TEAM STANDINGS

PLACE	4-A DIVISION	3-A DIVISION	2-A DIVISION	1-A DIVISION
1	Muir - 93	Rio Mesa - 66	Morningside - 90	Orange Lutheran - 76
2	Long Beach Wilson - 33	Thousand Oaks - 37.5	St. Bernard - 46	Pius X - 58
3	Long Beach Poly - 33	Duarte - 33	Torrance - 38	Fillmore - 44



Photos by Al Martin

COMPTON, MORNINGSIDEN WIN CIF/REEBOK STATE TRACK TITLES

Individual athletes and member-school teams of the CIF Southern Section again turned in a sparkling performance at the CIF/Reebok State Track and Field Championships, sweeping the team competition while winning 17 of the 31 total events.

In the boys competition, sprinter Ricky Carrigan carried Compton High to its first state title since 1958 with a double in the 100 and 200-meter dashes, as well as running the anchor leg on the Tarbabes' first-place 400-meter relay team. Esperanza High of Anaheim and Hawthorne finished second and third, respectively, providing the Southern Section with a top-three finish in the final team scoring.

In the girls meet, Morningside High of Inglewood rallied past Oxnard Rio Mesa to collect the team title, its first ever. Meet highlights included national record-breaking performances by sophomore Marion Jones of Rio Mesa (11.17 100-meter dash) and senior Juliana Yendork of Walnut (44-0½ in the triple jump). Both also emerged as double winners, Jones adding the 200-meter title and Yendork collecting the long-jump crown.

CIF/REEBOK 1991 STATE TRACK & FIELD CHAMPIONS

BOYS EVENTS

100 - Ricky Carrigan, Compton (10.33); 200 - Ricky Carrigan, Compton (20.84); 400 - Richard DuPree, Fresno Roosevelt (47.21); 800 - Mike Terry, El Modena (1:53.99); 1,600 - Daniel DasNeves, San Diego Helix (4:12.22); 3,200 - Dave Hartman, Canyon/C.C. (8:58.38); 110 HH - Issac Carson, San Jose Jefferson (13.67); 300 IH - Keith Williams, Escondido (37.28); 400 Relay - Compton (41.68); 1,600 Relay - Morningside (3:15.01); HJ - Avery Anderson, J.W. North (7-2); LJ - Steve Stanley, Gardena (25-1¼); TJ - Offord Rollins, Wasco (51-4¾); SP - Mark Parlin, Esperanza (61-5½); DT - Jeff Buckley, Bakersfield (182-4); Team - Compton (30), Esperanza (24.5), Hawthorne (20).

GIRLS EVENTS

100 - Marion Jones, Rio Mesa (11.17); 200 - Marion Jones, Rio Mesa (22.91); 400 - Janice Nichols, Bakersfield (54.19); 800 - Nicole Teter, West Valley (2:08.14); 1,600 - Rebecca Spies, Livermore (4:45.11); 3,200 - Deena Drossin, Agoura (10:30.71); 100 LH - Phetima Woods, Duarte (14.08); 300 LH - Erin Blunt, San Pasqual (43.02); 400 Relay - Morningside (46.38); 1,600 Relay - Long Beach Poly (3:15.01); HJ - Tanya Smith, Cordova (5-11); LJ - Juliana Yekdork, Walnut (20-7½); TJ - Juliana Yendork, Walnut (43-6½); SP - Mika Hilaire, Pittsburg (45-4¼); DT - Celeste McVey, Redlands (160-11).

SOUTHERN SECTION CIF/REEBOK 1991 BADMINTON PLAYOFF RESULTS

4-A DIVISION TEAM

Wild Card Round: Wilson (HH) 13, Riverside Poly 6; Garden Grove 17, Fullerton 2; Diamond Bar 13, Oceanview 6; Kennedy 10, Costa Mesa 9.

First Round: Estancia 15, Wilson (HH) 4; Pasadena 10, La Habra 9; Garden Grove 10, Redlands 9; Nogales 12, Westminster 7; Bolsa Grande 18, Corona del Mar 1; Fountain Valley 12, Palm Springs 7; Alhambra 10, Diamond Bar 9; Buena Park 15, Kennedy 3.

Quarterfinals: Estancia 12, Pasadena 7; Garden Grove 13, Nogales 6; Bolsa Grande 15, Fountain Valley 4; Buena Park 15, Alhambra 4.

Semifinals: Estancia 15, Garden Grove 4; Buena Park 11, Bolsa Grande 8.

Finals: Estancia 11, Buena Park 8.

3-A DIVISION TEAM

Wild Card Round: Rosemead 15, Sierra Vista 4. **First Round:** Etiwanda 15, Long Beach Jordan 4; Mountain View 11, Santa Ana Valley 8; Gladstone 12, Long Beach Poly 7; Covina 13, Bonita 6; Rosemead 14, Katella 5; Millikan 17, Workman 2; Alta Loma 13, Bassett 6; Keppel 18, Loara 1.

Quarterfinals: Etiwanda 15, Mountain View 4; Covina 10, Gladstone 9; Rosemead 12, Millikan 7; Keppel 15, Alta Loma 4.

Semifinals: Etiwanda 16, Covina 3; Keppel 10, Rosemead 9.

Finals: Keppel 13, Etiwanda 9.

MIXED DOUBLES

Quarterfinals: Ly/Nguyen (Estancia) def. Chou/Wu (Keppel); Le/Sundara (Buena Park) def. Sosrodjojo/Fu

(Diamond Bar); Meksavanh/Meksavanh (Nogales) def. Kim/Pham (Garden Grove); Ly/Thai (Rosemead) def. Song/Duran (Etiwanda).

Semifinals: Ly/Nguyen (Estancia) def. Le/Sundara (Buena Park); Meksavanh/Meksavanh (Nogales) def. Ly/Thai (Rosemead).

Finals: Ly/Nguyen (Estancia) def. Meksavanh/Meksavanh (Nogales).

GIRLS SINGLES

Quarterfinals: Noy Sundara (Buena Park) def. Lori Muster (Alta Loma); Anh Loi (Ocean View) def. Dao Pham (Garden Grove); Amelia Duran (Etiwanda) def. Audrey Harrison (Rubidoux); Amy Fu (Diamond Bar) def. Amy Li (Keppel).

Semifinals: Noy Sundara (Buena Park) def. Anh Loi (Ocean View); Amy Fu (Diamond Bar) def. Amelia Duran (Etiwanda).

Finals: Noy Sundara (Buena Park) def. Amy Fu (Diamond Bar).

BOYS SINGLES

Quarterfinals: Ho Song (Etiwanda) def. Saline Monh (Millikan); Sang Kim (Garden Grove) def. Charan-jeen Shinh (Magnolia); Cong Ta (Bolsa) def. Jemmy Tjio (Etiwanda); Suko Sosrodjojo (Diamond Bar) def. Huy Le (Millikan).

Semifinals: Ho Song (Etiwanda) def. Sang Kim (Garden Grove); Suko Sosrodjojo (Diamond Bar) def. Cong Ta (Bolsa).

Finals: Ho Song (Etiwanda) def. Suko Sosrodjojo (Diamond Bar).

SCHOOL-OFFICE COMMUNICATION

Communication with our schools is one of the most vital elements of the CIF Southern Section Office, and once again we will make every effort to provide the best possible method of forwarding material by employing a specific codification system.

In most cases, for economic reasons we will be using white paper for all correspondence. A specific titling will be placed where applicable so that at one glance, it can be noted to which area the communication applies. Principals will have a specific titling, Athletic Directors another, and Coaches will have a sports logo. In cases where a communication is directed to more than one individual (i.e., Coach and Athletic Director), additional copies will be included in the envelope, each with the applicable titling.

We ask your cooperation in forwarding any material contained in these mailings to the designated individuals, especially members of the coaching staff. It is imperative that this be done if this system is to be effective.

SOUTHERN SECTION CIF/REEBOK 1991 TEAM BADMINTON CHAMPIONS

4-A DIVISION Estancia

3-A DIVISION Keppel

GIRLS DOUBLES

Quarterfinals: Tram/Nguyen (Estancia) def. Nguyen/Tran (Westminster); Thai/Diep (Rosemead) def. Lin/Tsai (Diamond Bar); Chen/Huyen (Keppel) def. Meksavanh/Meksavanh (Nogales); Luan/Yin (Alhambra) def. Yau/Diep (Bolsa).

Semifinals: Tram/Nguyen (Estancia) def. Thai/Diep (Rosemead); Chen/Huyen (Keppel) def. Luan/Yin (Alhambra).

Finals: Chen/Huyen (Keppel) def. Tram/Nguyen (Estancia).

BOYS DOUBLES

Quarterfinals: Chou/Huang (Keppel) def. Rear-don/Studebaker (Palm Springs); Doan/Nguyen (Estancia) def. Lee/Hong (Etiwanda); Ly/Nguyen (Estancia) def. Meksavanh/Lai (Nogales); Ly/Wong (Rosemead) def. Sophiabmixay/Tang (Santa Ana).

Semifinals: Chou/Huang (Keppel) def. Doan/Nguyen (Estancia); Ly/Nguyen (Estancia) def. Ly/Wong (Rosemead).

Finals: Ly/Nguyen (Estancia) def. Chou/Huang (Keppel).

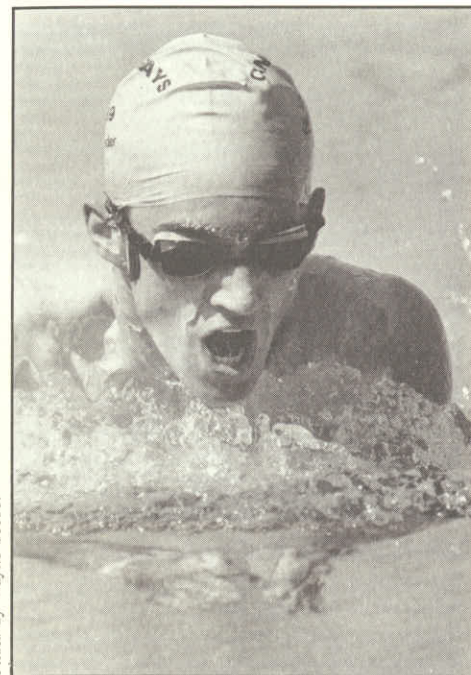


Photo by Wayne Seebert

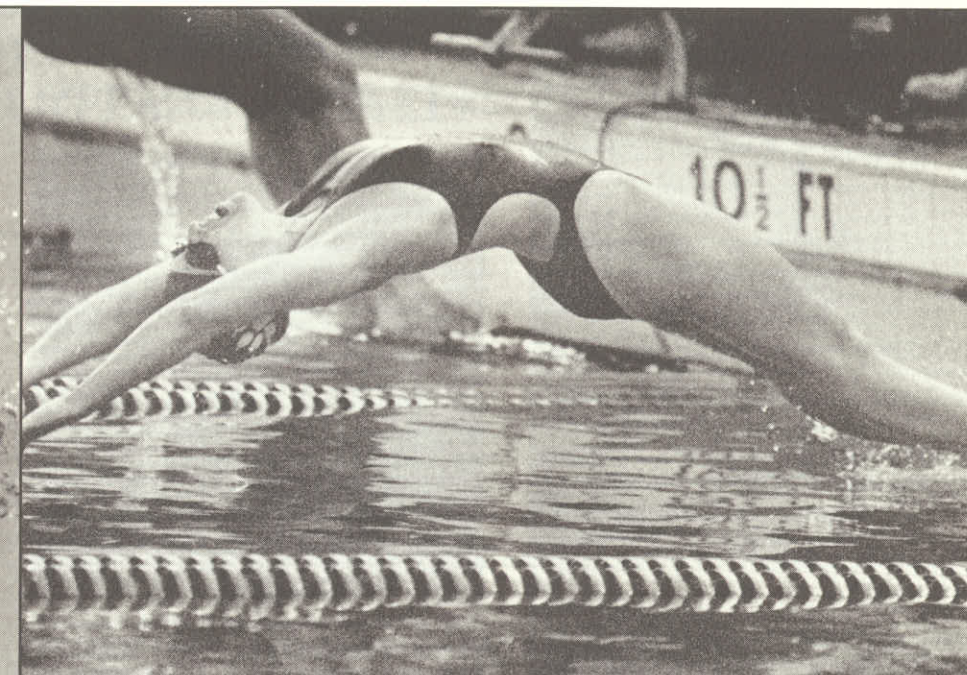


Photo by David Mironaka

SOUTHERN SECTION CIF/REEBOK 1991 SWIMMING AND DIVING CHAMPIONSHIP RESULTS

4-A DIVISION

200 Medley Relay - GIRLS: El Toro (1:48.95); BOYS: San Marino (1:33.21).

100 Freestyle - GIRLS: Michelle Kagy, Edison (1:50.76); BOYS: Eric Diehl, Mission Viejo (1:35.55).

200 Individual Medley - GIRLS: Michelle Ham, Fountain Valley (2:03.95); BOYS: Mike Mason, San Marino (1:50.72).

50 Freestyle - GIRLS: Claudia Franco, Mission Viejo (23.72); BOYS: Scott Wester, Marina (21.13).

Diving - GIRLS: Joy Burkholder, Capistrano Valley (466.50); BOYS: Ricky Wood, Royal (605.05).

100 Butterfly - GIRLS: Shona Baille, Mission Viejo (50.60); BOYS: Ben Pecht, Rio Mesa (50.39).

100 Freestyle - GIRLS: Michelle Perry, El Toro (51.29); BOYS: Dan Kanner, San Marino (45.15).

500 Freestyle - GIRLS: Michelle Kagy, Edison (4:56.54); BOYS: Eric Diehl, Mission Viejo (4:20.86).

200 Freestyle Relay - GIRLS: El Toro (1:37.95); BOYS: San Marino (1:24.12).

100 Backstroke - GIRLS: Marci Herron, Los Alamitos (57.92); BOYS: Jason Stelle, Agoura (49.62).

100 Breaststroke - GIRLS: Michelle Perry, El Toro (1:03.78); BOYS: Mike Mason, San Marino (55.74).

400 Freestyle Relay - GIRLS: Mission Viejo (3:34.89); BOYS: San Marino (3:05.98).

Final Team Results - GIRLS: Mission Viejo (201.0), El Toro (170.0), Buena (150.5); BOYS: San Marino (243.0), Mission Viejo (170.0), Capistrano Valley (117.0).

3-A DIVISION

200 Medley Relat - GIRLS: Brea-Olinda (1:51.85); BOYS: Santa Monica (1:37.64).

100 Freestyle - GIRLS: Amy Ward, Trabuco Hills (1:48.85); BOYS: Chris Baskett, Santa Monica (1:39.55).

200 Individual Medley - GIRLS: Maryellen Jenkins, Crescenta Valley (2:09.70); BOYS: Steve Warner, Santa Monica (1:52.92).

50 Freestyle - GIRLS: Lindsay Gassner, Hart (23.65); BOYS: Greg Milton, El Dorado (21.04).

Diving - GIRLS: Jane Penny, Laguna Hills (392.70);

BOYS: Sasha Johnson, Damien (358.80).

100 Butterfly - GIRLS: Arica Dunn, Brea-Olinda (57.39); BOYS: Dan Abruzzi, Palm Springs (50.16).

100 Freestyle - GIRLS: Lindsay Gassner, Hart (50.77); BOYS: Greg Milton, El Dorado (45.78).

500 Freestyle - GIRLS: Natalie Norberg, San Marino (4:49.81); BOYS: Chris Baskett, Santa Monica (4:24.62).

200 Freestyle Relay - GIRLS: Mater Dei (1:43.40); BOYS: Culver City (1:27.98).

100 Backstroke - GIRLS: Meredith Booker, Beverly Hills (56.96); BOYS: Larry Felix, El Dorado (53.70).

100 Breaststroke - GIRLS: Debbie Weber, Brea-Olinda (1:07.29); BOYS: Kevin Hendricks, Santa Margarita (57.59).

400 Freestyle Relay - GIRLS: Brea-Olinda (3:39.78); BOYS: Santa Monica (3:10.34).

Final Team Results - GIRLS: Brea-Olinda (173.0), Trabuco Hills (129.5), Mater Dei (93.0); BOYS: Santa Monica (200.0), El Dorado (139.0), Buena Park (113.0).

2-A DIVISION

200 Medley Relay - GIRLS: Walnut (1:53.43); BOYS: Walnut (1:35.73).

200 Freestyle - GIRLS: Alexis Larsen, Westlake/L.A. (1:53.11); BOYS: Chad Carvin, Laguna Hills (1:38.72).

SOUTHERN SECTION CIF/REEBOK 1991 SWIMMING AND DIVING TEAM CHAMPIONS

BOYS 4-A DIVISION San Marino

BOYS 3-A DIVISION Santa Monica

BOYS 2-A DIVISION Walnut

GIRLS 4-A DIVISION Mission Viejo

GIRLS 3-A DIVISION Brea-Olinda

GIRLS 2-A DIVISION Walnut

200 Individual Medley - GIRLS: Natasha Kone, Rancho Alamitos (2:07.60); BOYS: Dan Miles, Walnut (1:51.23).

50 Freestyle - GIRLS: Jessica Tong, Chadwick (23.67); BOYS: Brian Jacobson, Downey (20.87).

Diving - GIRLS: Erin Mosher, Marlborough (451.00); BOYS: Matt Dahl, Calabasas (432.60).

100 Butterfly - GIRLS: Mary Petry, Walnut (57.23); BOYS: Randy Hartley, Righetti (50.45).

100 Freestyle - GIRLS: Jessica Tong, Chadwick (50.81); BOYS: Brian Jacobson, Downey (44.99).

500 Freestyle - GIRLS: Alexis Larson, Westlake/L.A. (4:54.36); BOYS: Chad Carvin, Laguna Hills (4:22.08).

200 Freestyle Relay - GIRLS: Rolling Hills (1:43.06); BOYS: Downey (1:28.13).

100 Backstroke - GIRLS: Mary Petry, Walnut (56.60); BOYS: Randy Hartley, Righetti (52.84).

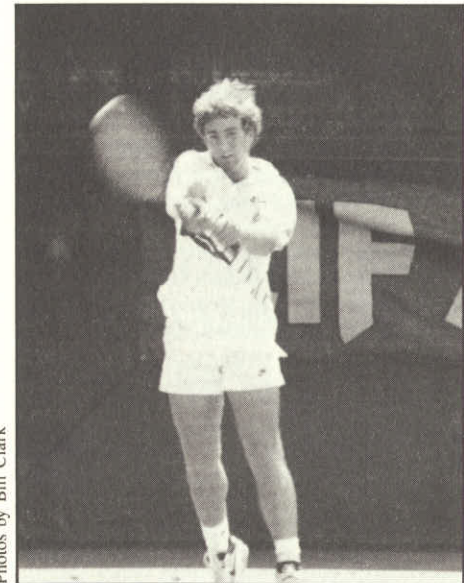
100 Breaststroke - GIRLS: Deborah Kory, Rolling Hills (1:05.60); BOYS: Ryan Cabinte, Walnut (58.93).

400 Freestyle Relay - GIRLS: Walnut (3:43.57); BOYS: Laguna Hills (3:08.96).

Final Team Results - GIRLS: Walnut (128.0), Rolling Hills (114.0), Palos Verdes (110.0); BOYS: Walnut (210.0), Laguna Hills (190.0), Downey (93.0).

SOUTHERN SECTION CIF/REEBOK 1991 BOYS TEAM TENNIS PLAYOFF RESULTS

4-A DIVISION
First Round: Santa Barbara 18, Newbury Park 0; L.B. Wilson 12, Redondo 6; Agoura 11, Foothill 7; Corona del Mar 17, Rowland 1; Beverly Hills 10, Palos Verdes 8; San Clemente 10, Santa Margarita 8; Fountain Valley 15, Millikan 3; Thousand Oaks 17, San Marcos 1; University 16, El Modena 2; Westlake 11, Ventura 7; Mission Viejo 14, Rolling Hills 4; L.B. Poly 13, Los Altos 5; Woodbridge 14, Loyola 4; Diamond Bar 10, Mater Dei 8; Huntington Beach 15, Canyon/A. 3; Dana Hills 18, Marina 0.
Second Round: Santa Barbara 17, L.B. Wilson 1; Corona del Mar 14, Agoura 4; Beverly Hills 10, San Clemente 8; Thousand Oaks 11, Fountain Valley 7; University 14, Westlake 4; Mission Viejo 15, L.B. Poly 3; Woodbridge 16, Diamond Bar 2; Dana Hills 17, Huntington Beach 1.
Quarterfinals: Santa Barbara 14, Corona del Mar 4; Beverly Hills 9, Thousand Oaks 9 (76-74); University 14, Mission Viejo 4; Dana Hills 18, Woodbridge 0.
Semifinals: Santa Barbara 18, Beverly Hills 0; University 9, Dana Hills 9 (89-78).
Finals: Santa Barbara 14, University 4.



3-A DIVISION
Wild Card Round: West Torrance 9, Paramount 9 (11-7); Palm Springs 15, Indio 3; Loara 13, Garden Grove 5; Ramona 13, Elsinore 5; Los Alamitos 9, Bolsa Grande 9; Troy 10, Laguna Hills 8; Upland 12, San Geronio 6; Glendale 11, La Canada 7; Crescenta Valley 13, South Pasadena 5; San Gabriel 10, Glendora 8.
First Round: San Marino 16, West Torrance 2; Palm Springs 11, Damien 7; Arcadia 15, Fullerton 3; Gahr 10, Loara 8; Redlands 18, Centennial/Corona 0; Central 14, Ramona 4; Costa Mesa 12, North Torrance 6; Burbank 13, Los Alamitos 5; La Quinta 16, Troy 2; Upland 10, J.W. North 8; Corona 9, Glendale 9 (86-75); Esperanza 14, Cerritos 4; South Torrance 11, Hart 7; Laguna Beach 11, Crescenta Valley 7; Riverside Poly 14, Palm Desert 4; Sunny Hills 17, San Gabriel 1.
Second Round: San Marino 16, Palm Springs 2; Arcadia 13, Gahr 5; Redlands 13, Central 5; Burbank 15, Costa Mesa 3; La Quinta 14, Upland 4; Esperanza 9, Corona 9 (87-70); Laguna Beach 10, South Tor-

rance 8; Sunny Hills 15, Riverside Poly 3.
Quarterfinals: San Marino 14, Arcadia 4; Redlands 10, Burbank 8; La Quinta 11, Esperanza 7; Sunny Hills 13, Laguna Beach 5.
Semifinals: San Marino 12, Redlands 6; Sunny Hills 9, La Quinta 9 (11-7).
Finals: Sunny Hills 12, San Marino 6.
2-A DIVISION
Wild Card Round: Crespi 17, Bell-Jeff 1; Bonita 16, San Dimas 2; El Monte 11, Magnolia 7; Northview 12, El Rancho 6.
First Round: Harvard 17, Canyon/C.C. 1; Etiwanda 15, Victor Valley 3; Cajon 12, Gladstone 6; Santa Maria 10, Thacher 8; Quartz Hill 18, Crespi 0; Western 12, Montebello 6; Covina 11, Chaminade 7; Arroyo 17, Bonita 1; Cate 13, Lompoc 5; Bassett 10, El Monte 8; Walnut 11, Bishop Montgomery 7; Keppel 18, Santa Fe 0; Valencia 14, Northview 4; Apple Valley 14, Montclair 4; Palmdale 10, St. Francis 8; Righetti 16, Nordhoff 2.
Second Round: Harvard 15, Etiwanda 3; Santa Maria 16, Cajon 2; Quartz Hill 16, Western 2; Arroyo 15, Covina 3; Cate 15, Bassett 3; Keppel 13, Walnut 5; Apple Valley 11, Valencia 7; Righetti 15, Palmdale 3.
Quarterfinals: Harvard 16, Santa Maria 2; Quartz Hill 10, Arroyo 8; Cate 9, Keppel 9 (90-88); Righetti 15, Apple Valley 3.
Semifinals: Harvard 15, Quartz Hill 3; Righetti 12, Cate 6.
Finals: Harvard 10, Righetti 8.
1-A DIVISION
First Round: Pasadena Poly Bye; Norte Vista 12, Kern



BOYS INDIVIDUAL TENNIS RESULTS

SINGLES
Quarterfinals: Peter Jeschke (Santa Barbara) def. Kurt Bruggerman (Dana Hills) 6-7, 6-8, 7-5; Kennny Cruz (Apple Valley) def. Reid Slattery (San Marino) 6-3, 6-4; David Murphy (Pasadena Poly) def. David Roditi (San Clemente) 3-6, 7-5, 6-3; Heath Montgomery (Santa Barbara) def. David Bain (Corona del Mar) 6-4, 6-4.
Semifinals: Kennny Cruz (Apple Valley) def. Peter Jeschke (Santa Barbara) 4-6, 6-4, 7-5; Heath Montgomery (Santa Barbara) def. David Murphy (Pasadena Poly) 6-3, 6-2.
Finals: Heath Montgomery (Santa Barbara) def. Kennny Cruz (Apple Valley) 6-1, 6-4.

DOUBLES
Quarterfinals: Potkey/Lynch (Ventura) def. Yung/Harris (San Marino) 6-4, 6-0; Holroyd/Cheng (Mission Viejo) def. Alwood/Grant (Riverside Poly) 4-6, 6-3, 6-2; Rhodes/Walden (Corona del Mar) def. McKenna/McKenna (Thousand Oaks) 3-6, 6-2, 7-5; Hoecker/Polsby (Pasadena Poly) def. Buchsbaum/Nicholas (Laguna Beach) 6-3, 6-3.
Semifinals: Potkey/Lynch (Ventura) def. Holroyd/Cheng (Mission Viejo) 6-4, 6-0; Rhodes/Walden (Corona del Mar) def. Hoecker/Polsby (Pasadena Poly) 5-7, 7-6, 6-3.
Finals: Potkey/Lynch (Ventura) def. Rhodes/Walden (Corona del Mar) 6-2, 6-3.

SOUTHERN SECTION
CIF/REEBOK
1991 BOYS TEAM TENNIS
CHAMPIONS

4-A DIVISION
Santa Barbara

3-A DIVISION
Sunny Hills

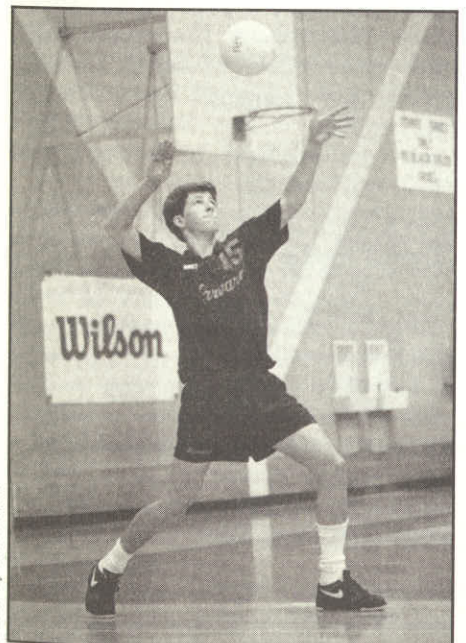
2-A DIVISION
Harvard

1-A DIVISION
Pasadena Poly

Valley 1; Artesia 10, Woodcrest Christian 8; Whitney Bye; Buckley 15, Flintridge Prep 3; La Sierra Bye; Bellflower 11, Campbell Hall 7; St. Joseph/S.M. 17, Oak Park 1; Cabrillo Bye; La Mirada 15, Marshall 3; Carpinteria 11, Morro Bay 7; Chadwick 14, Valley Christian/C. 4; Webb 18, Tehachapi 0; Beaumont Bye; Yucaipa 18, Bishop 0; Brentwood Bye.
Second Round: Pasadena Poly 15, Norte Vista 3; Whitney 14, Artesia 4; Buckley 15, La Sierra 3; St. Joseph/S.M. 9, Bellflower 9 (10-8); Cabrillo 13, La Mirada 5; Chadwick 12, Carpinteria 6; Webb 14, Beaumont 4; Brentwood 18, Yucaipa 0.
Quarterfinals: Pasadena Poly 17, Whitney 1; Buckley 10, St. Joseph/S.M. 8; Chadwick 11, Cabrillo 7; Brentwood 16, Webb 2.
Semifinals: Pasadena Poly 16, Buckley 2; Brentwood 18, Chadwick 0.
Finals: Pasadena Poly 13, Brentwood 5.

SOUTHERN SECTION CIF/REEBOK BOYS 1991 VOLLEYBALL PLAYOFF RESULTS

4-A DIVISION
First Round: San Marcos Bye; Brentwood def. Santa Monica 15-8, 13-15, 15-11, 7-15, 15-9; University def. Dana Hills 17-15, 15-10, 15-11; Marina def. Laguna Beach 15-10, 15-10, 15-11; Woodbridge def. Santa Margarita 15-7, 15-13, 15-7; Mira Costa def. Rio Mesa 15-2, 10-15, 15-10, 15-11; Glendale def. St. John Bosco 15-1, 15-9, 15-13; Edison def. Redondo 15-7, 15-3, 15-6; Newport Harbor def. Hoover 15-8, 15-7, 15-12; Rolling Hills def. Culver City 15-7, 15-5, 15-13; Loyola def. Dos Pueblos 15-3, 15-3, 7-15, 15-4; Capistrano Valley def. Laguna Hills 15-3, 15-1, 15-3; Santa Barbara def. Beverly Hills 15-4, 15-3, 15-7; Arcadia def. Palos Verdes 15-12, 15-3, 15-3; Irvine def. Trabuco Hills 15-12, 15-11, 11-15, 15-6; Huntington Beach def. Mater Dei 15-6, 15-3, 15-0.
Second Round: San Marcos def. Brentwood 15-7, 15-7, 11-15, 15-4; Marina def. University 15-7, 15-7, 15-10; Woodbridge def. Mira Costa 16-14, 15-10, 13-15, 14-16, 15-10; Glendale def. Edison 15-9, 15-8, 15-4; Newport Harbor def. Rolling Hills 18-16, 15-13, 13-15, 11-15, 15-11; Loyola def. Capistrano Valley 12-15, 15-6, 15-13, 12-15, 15-10; Santa Barbara def. Arcadia 11-15, 8-15, 15-12, 15-12, 15-13; Irvine def. Huntington Beach 4-15, 15-10, 5-15, 15-8, 16-14.
Quarterfinals: San Marcos def. Marina 15-8, 15-8, 15-5; Woodbridge def. Glendale 15-4, 15-7, 15-9; Newport Harbor def. Loyola 16-14, 8-15, 15-13, 14-16, 15-10; Santa Barbara def. Irvine 9-15, 15-10, 15-3, 15-11.
Semifinals: San Marcos def. Woodbridge 15-8, 4-15, 15-7, 17-15; Newport Harbor def. Santa Barbara 15-11, 9-15, 15-13, 15-13.
Finals: San Marcos def. Newport Harbor 15-5, 15-10, 10-15, 15-6.
3-A DIVISION
Wild Card Round: Notre Dame/S.O. def. La Canada 15-3, 15-4, 12-15, 15-8; Downey def. California 15-3, 15-8, 15-6; Upland def. La Salle 15-5, 15-1, 15-13; Western def. El Dorado 15-9, 15-7, 15-11; Camarillo def. Quartz Hill 15-12, 15-10, 15-4.
First Round: Royal def. Notre Dame/S.O. 15-2, 15-2, 15-4; Hart def. St. Francis 15-4, 15-5, 15-3; San Gabriel def. Lakewood 9-15, 15-9, 15-2, 15-11; Lyn-



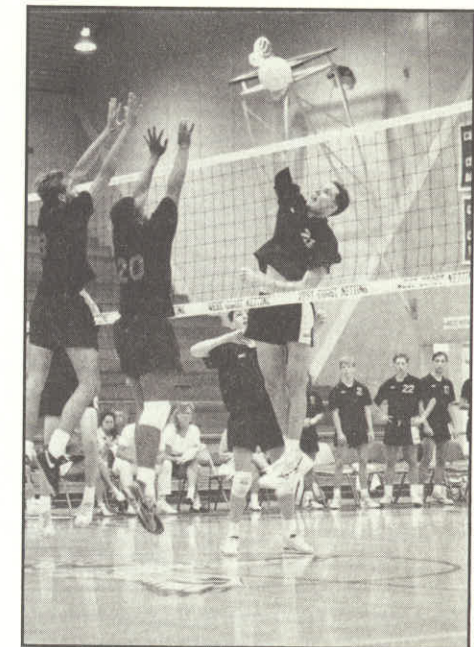
SOUTHERN SECTION
CIF/REEBOK
1991 BOYS VOLLEYBALL
CHAMPIONS

4-A DIVISION
San Marcos

3-A DIVISION
Harvard

2-A DIVISION
Whittier Christian

wood def. South Torrance 16-14, 8-15, 15-4, 6-15, 15-13; L.B. Poly def. West Torrance 15-8, 15-6, 15-3; Crespi def. Montebello 12-15, 15-5, 15-8, 15-9; Garden Grove def. El Modena 15-7, 10-15, 15-3, 15-10; Esperanza def. Downey 15-2, 15-9, 18-20, 15-12; Canyon/C.C. def. Upland 15-8, 15-3, 15-3; Newbury Park def. San Marino 2-15, 15-12, 15-17, 15-12, 15-12; Foothill def. Valencia 15-7, 8-15, 16-14, 5-15, 15-10; La Serna def. Pacifica 15-11, 15-10, 15-12; Bishop Montgomery def. Western 15-7, 15-8, 15-0; North Torrance def. Santiago 15-7, 15-11, 15-11; L.B. Wilson def. Gahr 19-17, 17-15, 15-6; Harvard def. Camarillo 15-7, 15-8, 15-3.
Second Round: Royal def. Hart 15-5, 15-5, 15-3; San Gabriel def. Lynwood 17-15, 15-9, 15-7; L.B. Poly def. Crespi 15-9, 11-15, 15-10, 15-7; Esperanza def. Garden Grove 15-5, 15-6, 15-10; Canyon/C.C. def. Newbury Park 7-15, 15-7, 16-14, 15-2; La Serna def. Foothill 15-12, 15-9, 7-15, 9-15, 15-7; Bishop Montgomery def. North Torrance 15-7, 15-8, 15-11; Harvard def. L.B. Wilson 15-5, 15-6, 16-14.
Quarterfinals: Royal def. San Gabriel 15-6, 15-11, 15-11; L.B. Poly def. Esperanza 6-15, 15-6, 15-10, 16-14; La Serna def. Canyon/C.C. 9-15, 16-14, 15-12, 1-15, 15-13; Harvard def. Bishop Montgomery 15-3, 15-4, 15-13.
Semifinals: Royal def. L.B. Poly 15-3, 17-15, 15-11; Harvard def. La Serna 15-9, 15-2, 15-2.
Finals: Harvard def. Royal 17-15, 7-15, 15-1, 6-15, 15-7.
2-A DIVISION
Wild Card Round: Chadwick def. Gethsemane Bap-



tist 15-6, 15-1, 15-3; Bishop Diego def. Montclair Prep 3-15, 15-6, 15-5, 10-15, 15-2; Cantwell def. Valley Christian/C. 10-15, 15-13, 15-12, 16-14; Bosco Tech def. West L.A. Baptist 15-10, 15-6, 15-7; St. Joseph/S.M. def. Campbell Hall 12-15, 15-12, 13-15, 15-9, 15-4; Salesian def. Crossroads 15-4, 15-13, 17-15.
First Round: Calvary Chapel/S.A. def. Chadwick 15-6, 15-6, 15-1; Glendale Adventist def. Windward 6-15, 15-11, 15-8, 15-9; Miraleste def. Bishop Diego 15-8, 15-7, 15-12; Pater Noster def. St. Margaret's 15-3, 15-5, 15-10; Cate def. Cantwell 16-14, 15-11, 15-12; Bosco Tech def. Flintridge Prep 15-11, 17-15, 15-6; St. Joseph/S.M. def. Southwestern Academy 5-15, 8-15, 15-12, 15-8, 15-4; Whittier Christian def. Salesian 15-9, 15-9, 15-9.
Quarterfinals: Calvary Chapel/S.A. def. Glendale Adventist 15-3, 7-15, 15-7, 15-3; Miraleste def. Pater Noster 15-3, 12-15, 11-15, 15-10, 15-10; Bosco Tech def. Cate 10-15, 10-15, 15-3, 15-9, 15-13; Whittier Christian def. St. Joseph/S.M. 15-5, 15-3, 15-13.
Semifinals: Calvary Chapel/S.A. def. Miraleste 15-8, 15-12, 15-5; Whittier Christian def. Bosco Tech 15-12, 15-13, 15-12.
Finals: Whittier Christian def. Calvary Chapel/S.A. 15-13, 15-6, 12-15, 15-9.

SOUTHERN SECTION CIF/REEBOK 1991 GOLF CHAMPIONSHIPS		
TEAM FINALS		
At La Cumbre Golf and Country Club, Santa Barbara		
PL. / SCHOOL	SCORE	
1. Estancia	382	
2. Long Beach Wilson	395	
3. Dana Hills	396	
Palm Springs	396	
5. Westlake	401	
6. Rio Mesa	403	
7. Hart	404	
8. Huntington Beach	405	
9. Agoura	408	
10. Palm Desert	409	
INDIVIDUAL FINALS		
At Canyon Country Club, Palm Springs		
PL. / PLAYER/SCHOOL	SCORE	
1. Tiger Woods, Western	68	
2. Richard Son, Sunny Hills	71	
3. Chris Berry, Esperanza	72	
Ryan Bogan, Palm Desert	72	
Chad Wright, Buena	72	
6. Shane O'Brien, Hart	74	
John Schmidt, Hesperia	74	
8. Vern Edler, Dana Hills	75	
Robert Haupt, Mission Prep	75	
10. Mark Watanabe, South Pasadena	76	
Jeff Richardson, Righetti	76	
Mike Walton, Palm Desert	76	
Erik Wolf, El Dorado	76	

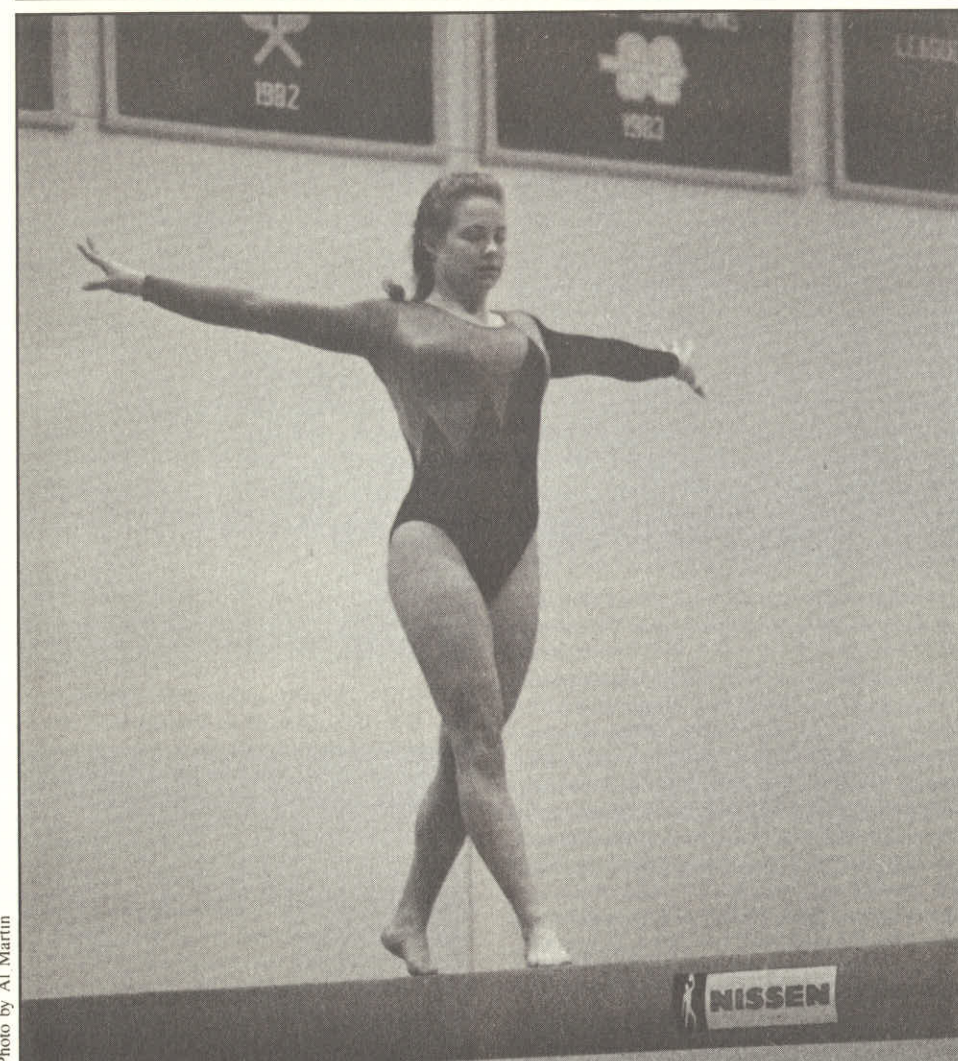


Photo by Al Martin

SOUTHERN SECTION CIF/REEBOK 1991 GYMNASTICS CHAMPIONS

ALL-AROUND

Ginger Collins
Los Alamitos

FLOOR EXERCISE

Ginger Collins
Los Alamitos

VAULT

Ginger Collins
Los Alamitos

BALANCE BEAM

Lorin Bender
Westlake/L.A.

UNEVEN PARALLEL BARS

Lorin Bender
Westlake/L.A.

RECRUITMENT OF OFFICIALS REMAINS HIGH PRIORITY

It is nothing new, just a never-ending fact of life. The officials' associations in all sports servicing CIF Southern Section member schools remain in constant need of new recruits to fill their ranks and cover the vast number of contest assignments for the 1991-92 school year and beyond. Immediate openings for officials in all sports are now available for sports-minded people from all walks of life.

The only requirement of new officials is that they be at least age 18 and out of high school. Compensation for CIF Southern Section officiating assignments range from \$20 to \$76, depending upon the sport, level of competition and the scheduled starting time.

The fall season of sport, officially opening the weekend of Sept. 12-14, includes openings in football, girls volleyball and water polo. Winter season (Nov. 25 - Feb. 15) activities include boys and girls basketball, boys and girls soccer and wrestling. The spring season (Mar. 2 - May 16) will provide opportunities in baseball, softball, boys and girls track and field and boys and swimming and diving.

The CIF Southern Section, which spans a geographical area from the Mexican border to Paso Robles on the coast and as far north as Lee Vining in the Eastern Sierra, is divided into 10 local assignment areas.

For direct information on how to get started, interested persons should contact their local CIF-SS Officials' Liaison, as listed below.

LONG BEACH/WHITTIER LIAISON

Bob Howard
Res: (213) 431-0748

COACHELLA VALLEY/IMPERIAL VALLEY LIAISON

John Standish
Bus: (619) 773-0055
Res: (619) 773-3014

ORANGE COUNTY LIAISON

E.M. "Speed" Castillo
Bus: (714) 220-4054
Res: (714) 778-2856

SAN FERNANDO/PASADENA LIAISON

Jim Bodack
Bus: (818) 347-4457
(8:00 a.m. - noon)

INLAND LIAISON

Sam Pecchia
Res: (714) 689-3371

SAN LUIS OBISPO LIAISON

Jon Iribarren
Bus: (805) 543-2131
Res: (805) 543-4454

SOUTH BAY LIAISON

Ken Wilson
Bus: (213) 318-7301
Res: (213) 376-5118

UPPER DESERT LIAISON

Darrell Havens
Bus: (805) 722-7700
Res: (805) 947-6590

VENTURA LIAISON

Cal Houston
Res: (805) 646-4764

FOOTHILL-CITRUS LIAISON

Jim Graham
Bus: (818) 967-6211
Res: (714) 599-5730



VOLLEYBALL JOINS FOOTBALL, BASKETBALL AS THIRD REVENUE-PRODUCING SPORT

By adoption of the CIF Southern Section Executive Committee at its June, 1991 meeting, all playoff contests in the sport of boys and girls volleyball will require admission fees, effective in the 1991-92 school year. Volleyball joins football and basketball as the third CIF-SS sport with required admission fees for playoff contests.

"The popularity of volleyball has grown tremendously since its introduction to the CIF Southern Section sports program in the early 1970s," points out CIF-SS Volleyball Administrator Karen Hellyer. "Southern California — and more specifically the CIF Southern Section — has long been a hotbed of high school volleyball competition, as evidenced by the high percentage of our athletes continuing their playing careers in Division I college programs. It is time for volleyball to assume its rightful place as a revenue-producing program alongside the traditional major sports."

According to a 1990-91 survey of member schools, volleyball now ranks as

the most popular female sport in the CIF-SS, with a total of 437 member schools in participation. The No. 2 girls sport was basketball, with 432 schools fielding teams. Boys volleyball participation has grown from a handful of beach schools in the early seventies to a total of 209 programs for the past season.

Section 2906 of the CIF-SS Blue Book, which states: *In football and basketball playoff games, the home school will account for all revenue from the game, pay all expenses for the game, and compile the financial report, sending a copy to the visiting school and the CIF Southern Section; will heretofore include volleyball as well.*

Blue Book Rule No. 144, under the heading of the CIF Southern Section financial policy states: *In all rounds of the football, basketball (and now volleyball) playoff games, including championship games, the net profit shall be split one-fourth to each school and one-half to the*

CIF-SS. In championship games in the other sports the CIF-SS shall receive the net profit if the office manages same.

Member schools have, for many years, had the option to charge admission fees for volleyball playoff contests, provided both competing schools were in agreement and the CIF-SS Office was notified prior to the event. The CIF-SS Volleyball Department will develop a detailed Volleyball Playoff Handbook to assist member schools in the accounting process for volleyball playoff contests.

Ticket prices for the 1991-92 school year will remain consistent with the previous year's recommended levels: Adults — \$4; Students — \$3; and Children — \$2 for all preliminary-round contests; Adults — \$5; Students — \$3; and Children — \$3 for all championship contests. Student ticket prices will be based upon on campus pre-sale requirements, as in the sports of football and basketball.

RULE REVIEW

(Continued from page 3)

following points regarding transfer eligibility: 1.) If a student transfers to your school and the student is the only individual moving to a new residence, then chances are the student will not be eligible and will fall under the provisions of Rule 214. The only time a student will receive unrestricted eligibility is when there is a bona fide change of address on the part of the student and his parents or guardians and the change is made from one public school attendance area to another. When the student is the only one involved in the move, a form 214 is required before eligibility, either unrestricted or restricted, can be approved. A transfer student falling under the provisions of Rule 214 IS NOT ELIGIBLE to participate until the 214 form has been processed by the CIF-SS Office.

2.) At no time should transfer students be allowed to participate until transcripts have been reviewed by the appropriate school administrator. The incoming student could be scholastically ineligible, could have completed eight semesters of eligibility, or, as in the case of a foreign exchange student, could have already graduated or received a certificate of completion from a school in his or her home country. In each of these cases, the students are not eligible for CIF competition and any contests in which they have participated would have to be forfeited.

The language of the revised transfer eligibility rule states that a transfer student is only eligible after a bona fide move on

the part of the parents or party the student resided with in the previous year.

Because Rule 221 has been deleted by the State CIF, guardianship provisions are now covered under the Rule 214. The old rule, which still applies, stated that a student transferring from one school to another with a new legal guardian would be ineligible at the new school unless a waiver were approved by action of the CIF-SS. Remember, if a student transfers from one school to another and a new guardian is appointed DUE TO HARDSHIP, any request for waiver will be accepted only if there is a court-appointed legal guardian. All requests and legal verification must be submitted to the CIF-SS Office for review and approval.

A common case study dealing with the question of legal guardianship concerns legal separation of the parents: When the parents of a student legally separate and take up residence in different high school attendance areas, what is the eligibility status of the student? When a student's parents legally separate AND initiate divorce proceedings, the student would have continuing eligibility in the high school attendance area in which he/she originally resided.

The provisions for hardship appeal are now incorporated into the text of Rule 215. Hardship waivers will only be considered into the text of Rule 215. Hardship waivers will only be considered in cases of transfer eligibility, the 20-unit requirement and the eight-semester requirement. Beginning this fall, all hardship cases presented to the

CIF-SS will be processed on Form 215 rather than Form 224, which has also been deleted. The definition of a hardship can now be found in Rule 215(c).

In addition to the clarification and rewriting of Rules 214, 215 and 221, another major change concerns State CIF Rule 226, which deals with competitive equity in compliance with the eligibility rules of the organization.

The new rule provides that: if a student who is determined ineligible under the terms of the constitution, by-laws or other legislation of the CIF is permitted to participate in interscholastic contests because of a court injunction or temporary restraining order and it is later determined that such injunction was not justified, the CIF may take action in the interest of restitution and fairness to competing schools. The action may include any of the following: requiring that individual and/or team records be vacated or stricken from the record; require that individual and/or team awards be returned to the CIF, sponsor or competing teams; require that team victories achieved during participation by such ineligible student athlete be forfeited to the opposing schools; etc.

The CIF Southern Section Administrative Staff is available on a daily basis to help school administrators interpret the rules of the organization in specific cases which may arise. Should you or your staff need assistance, please don't hesitate to contact our office immediately. Best wishes for an enjoyable and successful sports year.

NATIONAL FED. BASEBALL RULES CHANGES FOR 1992 SEASON

Rule changes related to the batting helmet and sliding have been approved for the 1992 high school baseball season.

In its June 16-17 meeting in Kansas City, the National Federation Baseball Rules Committee approved a number of changes designed to further ensure the safety of the more than 400,000 boys who participate in high school baseball.

Effective with the 1992 season, any runner who scores or who makes an out will be required to wear his batting helmet until he reaches the bench or dugout, while the ball is alive. Other players already required to wear batting helmets are the batter, runner, on-deck batter and any player/student who occupies a coach's box.

Safety also was the primary factor in a rule change involving sliding. Beginning next year, in force-play situations where the runner slides, the runner must execute a legal slide or attempt to avoid the play.

"A runner will not be permitted to slide into a fielder if the fielder is far enough away from the base that the runner, when sliding, cannot touch the base with a hand or foot," said Brad Rumble, assistant director of the National Federation and editor of the high school baseball rules.

Legal and illegal slides have been defined and are included in the section of definitions in the baseball rule book.

In another safety move intended to control performance characteristics of bats, the

committee approved that bat weights cannot be more than five units less than the length of the bat. As an example, a 35-inch bat cannot weigh less than 30 ounces. In addition, the maximum length of bats was reduced from 42 to 36 inches.

"The rules committee also was concerned about equipment left in the live-ball area," Rumble said. "Not only could such equipment alter a play, but, more importantly, players could become injured if they should stumble or fall over or on the equipment."

Rules previously prohibited any equipment of the team at bat from being left on or near the field.

In other changes, a manufacturer's logo (partial or whole) or trademark that appears on the team's uniform shall not exceed 1½ x 1½ inches, beginning with the 1994 season. Also, the ball is dead when the umpire gives the "do not pitch" signal.

Points of Emphasis identified by the committee for the 1992 season are sportsmanship; keeping team personnel in the dugout or bench area while the ball is alive; calling a balk if a pitcher, while in the set position stance and in contact with the pitcher's plate, turns or moves his shoulders to look at runners; the pitching limitation rule, and throat protectors must cover the throat adequately, whether the attached type or extensions of the mask, or they are illegal.

EXECUTIVE COMMITTEE (Continued from page 2)

tion 80 affecting State Executive Committee members; Perris High School multi-campus request and updated the committee on the sex equity issue.

8. DESERT-INYO LEAGUE SPLIT (1992-93) — Ray Monti, Desert Area Representative, reviewed the history of the Desert-Inyo League and their request to split into two leagues commencing with the 1992-93 school year. The High Desert League would consist of: Bishop, Desert, Kern Valley, Mojave, Paraclete, Rosamond and Silver Valley high schools. The Desert Mountain League would include Antelope Valley Christian, Bethel Christian (Lancaster), Big Pine, Boron, Desert Christian (Lancaster), Lone Pine, Mammoth, and Trona high schools. Following discussion, it was moved, seconded and passed to approve the request of the Desert-Inyo League.

9. EL TORO HIGH SCHOOL FOOTBALL REQUEST — Tim Triggs, Orange County Area Representative, reviewed a request to continue the two-year pilot program of extending the ten minute quarters to twelve minute quarters. Following discussion, it was moved, seconded and passed to deny the request.

10. PENINSULA HIGH SCHOOL REQUEST — It was moved, seconded and passed to accept Peninsula High School for membership commencing with the 1991-92 school year due to the closure of Miraleste, Palos Verdes and Rolling Hills high schools.

11. MEMBERSHIP REQUEST — Following discussion it was moved, seconded and passed to table a membership request from Stoneridge Prep.

There being no further business to come before the committee, the meeting adjourned at 4:30 p.m.

Submitted by
KAREN HELLYER,
ADMINISTRATOR

Approved by
STAN THOMAS,
COMMISSIONER OF ATHLETICS

BASKETBALL IN 100th YEAR

The sport of basketball will celebrate its 100th anniversary in the 1991-92 season and CIF-SS teams are encouraged to take part in the observance by affixing an official patch to their uniforms.

The embroidered patches are now available through the National Federation Office: (816) 464-5400 - P.O. Box 20626, Kansas City, MO 64195. The unit-price is \$2 ea. (1-10); \$1.50 ea. (11-20); \$1.25 ea. (21-100); \$1.10 ea. (101 or more).



CIF Southern Section Publication Order Form

Quantity	Item	Price Enclosed
_____	Baseball	
_____	rule book	\$3.50
_____	case book	\$3.50
_____	CIF-SS program	\$4.00
_____	Press Guide/Master Schedule	\$8.00
_____	Basketball	
_____	rule book	\$3.50
_____	case book	\$3.50
_____	simplified rule	\$3.50
_____	CIF-SS program	\$4.00
_____	Press Guide/Master Schedule	\$11.00
_____	Football	
_____	rule book	\$3.50
_____	case book	\$3.50
_____	simplified rule	\$3.50
_____	CIF-SS program	\$4.00
_____	Press Guide/Master Schedule	\$7.00
_____	Gymnastics	
_____	Boys rules	\$4.50
_____	Girls rules	\$4.50
_____	Field Hockey	
_____	rule book	\$3.50
_____	Soccer	
_____	rule book	\$3.50
_____	CIF-SS program	\$3.00
_____	Softball	
_____	rule book	\$3.50
_____	CIF-SS program	\$4.00
_____	Swimming/Water Polo	
_____	rule book	\$3.50
_____	CIF-SS program	\$3.00
_____	Track & Field	
_____	rule book	\$3.50
_____	CIF-SS program	\$4.00
_____	Volleyball	
_____	rule book	\$3.50
_____	Boys' program	\$3.00
_____	Girls' program	\$3.00
_____	Wrestling	
_____	rule book	\$3.50
_____	CIF-SS program	\$3.00
_____	CIF-SS Blue Book/Directory	\$12.00
_____	CIF-SS Bulletin (4 Editions)	\$10.00
_____	Total Amount Enclosed	\$ _____

All Prices include
Postage and Handling

Mail to:

Name _____
Address _____
City _____
Zip _____

Return to:
Publication Order
CIF-SS, P.O. Box 488
Cerritos, CA 90702

MAKE FOOTBALL SAFETY YOUR NO. 1 PRIORITY!

Adopt 'Safety First' Coaching Techniques: According to legal experts, "failure to warn" usually is one of the primary accusations made against those in the coaching profession in litigation that involves catastrophic injury to a player.

To help prevent what could result in the destruction of a coaching career, as well as massive financial loss, adopt 'safety first' coaching techniques:

1) Have a clear and complete understanding of the intent of correct application of safety rules.

2) Make graphically clear to players the risk of violating these rules and use the available 'printed' material as a constant authoritative reminder to them of the importance of correct techniques.

3) Point out in exact terms the risk of an 'accidental' catastrophic injury in athletics before the first practice begins.

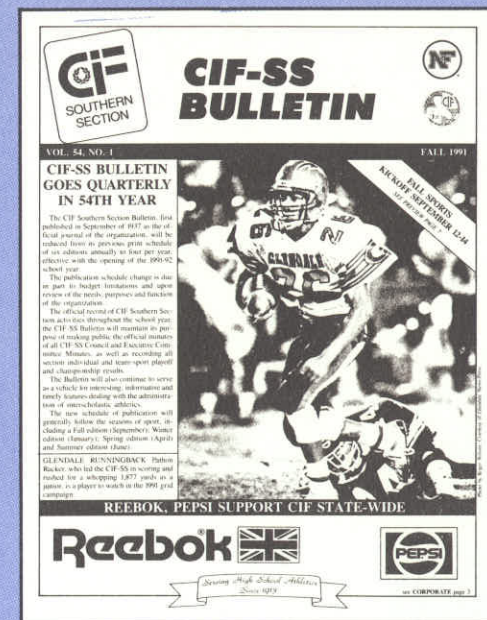
Coaches' Safety Checklist

Excerpted from an article by Dick Schindler for the National Federation News.

- 1) Keep the head up.
- 2) Discuss risk of injury.
- 3) Keep the head out of contact.
- 4) Explain how serious injuries occur.
- 5) Involve parents in early season meeting.
- 6) Have a set plan for coaching safety.
- 7) Clearly explain and demonstrate safe techniques.
- 8) Provide best medical care possible.
- 9) Monitor blocking and tackling techniques every day.
- 10) Repeat drills which stress proper and safe techniques.
- 11) Admonish and/or discipline users of unsafe techniques.
- 12) Receive clearance by doctor for athlete to play following head trauma.
- 13) Stress safety every day.
- 14) Don't glorify "head hunters."
- 15) Support officials who penalize illegal helmet contact.
- 16) Don't praise or condone illegal helmet contact.
- 17) Provide conditioning to strengthen neck muscles.
- 18) Entire staff must be "tuned in" to safety program.
- 19) Check helmet condition regularly.
- 20) Improper technique causes spinal-cord injury.
- 21) Helmet must fit properly.
- 22) Be prepared for a catastrophic injury.
- 23) The game doesn't need abusive contact.
- 24) Player safety is your responsibility.
- 25) It's a game — not a job — for the players.

Reprinted from *Annual Survey of Football Injury Research, 1931-1990* with permission of the *American Football Coaches Association*.

Subscription Order Form



Here's your chance to keep abreast of current CIF-Southern Section and high school athletic news. A "subscription department" is now open so that all sports-minded groups and interested community people may purchase a subscription to this publication.

NOTE: Complimentary copies of the CIF-SS Bulletin will continue to be sent to member schools and the media.

1. Subscriptions are now on sale. Issued 4 times yearly for only \$10.00
2. Copies will be sent directly to the address printed on the order form.
3. Each order must include a check or money order. Please make checks payable to CIF Southern Section.

1991-92 CIF-SS BULLETIN ORDER FORM

Please Process My Order for the 1991-92 CIF-SS BULLETIN.

☐ Check for \$10.00 enclosed.

NAME _____

ADDRESS _____

CITY _____

STATE _____

ZIP _____

() _____

PHONE _____

MAIL TO "CIF-SS BULLETIN"
P.O. BOX 488, CERRITOS, CA 90702

NATIONAL HS RECORD BOOK AVAILABLE

The National Federation of State High School Associations, of which the CIF Southern Section has been a long-standing member, is pleased to announce the continuing publication of the nation's only official National High School Sports Record Book.

Since the employment of Mr. Fred Mares in 1989 to oversee its publication, the National High School Sports Record Book has maintained a consistent annual publication date of each January.

The 296-page 1991 edition is a comprehensive history of high school accomplishments in 15 boys and girls sports, laced with notoriety of many CIF Southern Section teams and student-athletes.

The National High School Sports Record book is a must for members of the prep sports media, as well as a tremendous reference tool for high school athletic directors and coaches. To obtain your copy, simply use the boxed order form on this page.

CIF-SS INCREASES COPYING ABILITY

The CIF-SS Office has leased a Xerox 5090 Copier, a state-of-the-art reproduction machine in speed and print quality that also has binding capabilities. The efficiency of the 5090 will allow the office to handle "overload" jobs of local schools and districts on a low-cost basis. For further information, contact CIF-SS Office Manager Jolene Eble.

SPECIAL COUNCIL MINUTES (Continued from page 4)

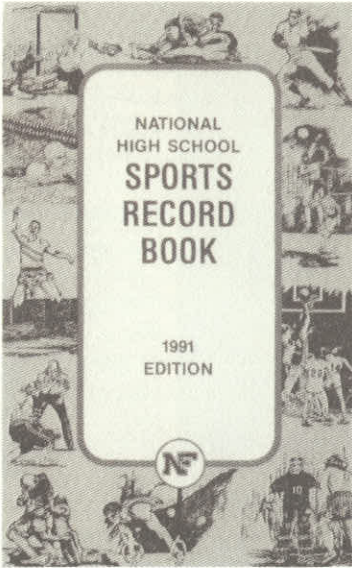
representing the South Coast League, spoke in support of the motion denying the placement of the four parochial schools, citing differences in boundary requirements and school athletic compatibility.

Father Bill Brelsford, Principal of St. Bernard High School and representing the Catholic Athletic Association, addressed the Council relative to competitive equity, drawing attention to a recently completed CIF-SS survey which indicates that a vast majority of the championships over the past ten years have been won by public schools.

Kathryn Hennigan, Principal of Rosary High School, spoke in support of the parochial schools' placement in the Orange County Releaguings Area.



Eric Walters, Athletic Director of Oakwood High School and representing the Liberty League, spoke in support of schools with varied backgrounds (parochial, private, etc.) successfully competing and working together.

Monsignor Michael Harris, Principal of Santa Margarita High School, spoke in support of the placement of Santa Margarita High School in the Orange County Releaguings Area, reviewing the rationale given by the other parochial area principals.



National High School Sports Record Book

Contains records and top performances in 15 sports for boys and girls — A history of the top achievements of high school greats.

Cheryl Miller

Herschel Walker

Please send me _____ copies of the National High School Sports Record Book at \$3.95 each. (Include \$4.00 for shipping and handling for orders up to \$15; \$6.00 for orders over \$15.)

Name _____

Address _____

City _____ State _____ Zip _____

Please make check payable to the National Federation and return to the National Federation of State High School Associations, 11724 NW Plaza Circle, P.O. Box 20626, Kansas City, MO 64195.

At the request of the Chair, Dr. Escoe withdrew his motion, as did the second, in order that the Council may address the criteria as findings of fact on an individual basis for each of the parochial schools.

The following reflects the findings of fact of the Council relative to each of the schools:

VOTE ON SPECIFIC FINDING OF FACT				
FINDING OF FACT	M.D.	R/S	S. MARG.	
1. Initial request of member school—	Yes	Yes	Yes	
	(By Motion)			
2. Proximity of location of member schools within designated area and to each other	Yes	Yes	Yes	
	(32-13)	(30-13)(30-14)		
	(By Motion)			
3. Number of schools comprising designated area as that number impacts potential re-leaguings configurations	Yes	Yes	Yes	
	(By Motion)			
4. Special circumstances which might include anomalies related to enrollment, geography, special features of school athletic programs (i.e. all boys, all girls, etc.)	Yes	Yes	Yes	
	(30-14)	(31-14)(30-14)		

Following the findings of facts, utilizing the four criteria as listed in the Blue Book under "Criteria for Area Placement" as a finding of fact, a motion to place Mater Dei High School in the Orange County Releaguings Area was approved by a vote of 29-15, thus sustaining the action of the Executive Committee; a motion to place Servite/Rosary High Schools in the Orange County Releaguings Area was approved by a vote of 29-15, thus sustaining the action of the Executive Committee; a motion to place Santa Margarita High School in the Orange County Releaguings Area was approved by a vote of 30-14, thus sustaining the action of the Executive Committee.

There being no further business to come before the Council, the meeting was adjourned at 2:50 p.m.

Submitted by
DEAN CROWLEY,
ASSOCIATE COMMISSIONER

Approved by
STAN THOMAS,
COMMISSIONER OF ATHLETICS



BASEBALL RESULTS (Continued from page 10)

Semifinals: Montclair Prep 3, San Jacinto 2; Orange Lutheran 4, Crossroads 1.

Finals: Montclair Prep 12, Orange Lutheran 2.

SMALL SCHOOLS DIVISION

Wild Card Round: Desert Christian 15, Calvary Chapel/R. 9; Calvary Chapel/S.A. 12, St. Margaret's 4; First Lutheran 19, Westside Prep 3; Hesperia Christian 6, Lone Pine 4; Dunn 10, Cuyama Valley 4; Liberty Christian 19, Calvary Chapel/D. 14; Rio Hondo Prep 8, Oakwood 6; Christian Center Academy 7, Boy's Republic 6.

First Round: Linfield 15, Desert Christian 2; Mesrobian 9, Pioneer Baptist 6; Hamilton 2, Calvary Chapel/S.A. 1; Providence 9, Antelope Valley Christian 1; Mammoth 2, Ambassador Baptist 1; Leffingwell Christian 12, First Lutheran 3; Shandon 2, Villanova Prep 0; Pasadena Poly 15, Hesperia Christian 1; Woodcrest Christian 8, La Sierra Academy 0; Avalon 11, California Lutheran 4; Dunn 17, Highland Hall 15; Chadwick 15, Liberty Christian 4; Rio Hondo Prep 5, L.A. Lutheran 1; Cate 14, Valley Christian/S.M. 1; Bethel Christian/R. 11, Southwestern 7; Rosamond 25, Christian Center Academy 6.

Second Round: Linfield 16, Mesrobian 3; Providence 14, Hamilton 1; Mammoth 14, Leffingwell Christian 4; Pasadena Poly 7, Shandon 3; Woodcrest Christian 6, Avalon 5; Chadwick 15, Dunn 1; Rio Hondo Prep 4, Cate 3; Bethel Christian/R. 6, Rosamond 4.

Quarterfinals: Linfield 6, Providence 0; Pasadena Poly 6, Mammoth 1; Chadwick 14, Woodcrest Christian 2; Rio Hondo Prep 11, Bethel Christian/R. 3.

Semifinals: Linfield 10, Pasadena Poly 5; Chadwick 8, Rio Hondo Prep 2.

Finals: Linfield 7, Chadwick 4.

SOFTBALL RESULTS (Continued from page 11)

Western Christian 14, Alverno 0; Whittier Christian 3, St. Bonaventure 1; Valley Christian/C. 5, Pasadena Poly 2; Moorpark 11, Notre Dame Academy 8; Paraclete 2, Fillmore 1.

Quarterfinals: La Reina 11, Santa Paula 7; Western Christian 10, Ayala 3; Whittier Christian 3, Valley Christian/C. 0; Paraclete 10, Moorpark 2.

Semifinals: La Reina 6, Western Christian 0; Paraclete 4, Whittier Christian 0.

Finals: La Reina 3, Paraclete 0.

SMALL SCHOOLS DIVISION

First Round: Inland Christian 31, Harbor Christian 0; Mammoth 9, Bethel Christian/L. 6; Avalon 34, Claremont/G.G. 10; Linfield 34, Bloomington Christian 3; Hesperia Christian 14, Liberty Christian 4; Crossroads 11, Pacific Christian 2; Hillcrest Christian 14, Cuyama Valley 4; Maricopa 11, Providence 2; Hamilton 11, Desert Christian 3; St. Margaret's 20, Calvary Chapel/D. 3; Ribet Academy 19, Rosamond 11; Woodcrest Christian 3, Bethel Christian/L. 1; Oakwood 5, Big Pine 3; Cate 17, Faith Baptist 5; Campbell Hall 15, Valley Christian/S.M. 4; Templeton 6, L.A. Lutheran 1.

Second Round: Inland Christian 20, Mammoth 1; Linfield 7, Avalon 4; Crossroads 12, Hesperia Christian 8; Maricopa 15, Hillcrest Christian 4; Hamilton 5, St. Margaret's 0; Woodcrest Christian 13, Ribet Academy 5; Oakwood 6, Cate 5; Templeton 11, Campbell Hall 1.

Quarterfinals: Inland Christian 8, Linfield 6; Crossroads 8, Maricopa 7; Woodcrest Christian 3, Hamilton 1; Oakwood 2, Templeton 1.

Semifinals: Inland Christian 4, Crossroads 0; Woodcrest Christian 9, Oakwood 0.

Finals: Inland Christian 7, Woodcrest Christian 4.

CIF SOUTHERN SECTION STAFF SUBJECT CONTACT DIRECTORY

The following list is provided to member schools and other interested parties as a reference to channel phone calls and/or correspondence on specific subjects to the CIF Southern Section Office during the 1991-92 school year.

CIF Southern Section Office phone numbers are (213) 860-2414 or (714) 826-5390; FAX (213) 860-1692. The mailing address is P.O. Box 488, Cerritos, CA 90702; the street address is 11011 E. Artesia Blvd., Cerritos, CA 90701.

Please direct specific questions accordingly . . .

SUBJECT	STAFF MEMBER
Academic Awards Program	Chris Thomas
Accounting/Financial Records	Shirley Frazier
Advertising/Corporate Support	Chris Thomas
All-CIF Teams	Scott Cathcart
Athletic Records	Scott Cathcart
Awards/Certificates	Chris Thomas
Badminton	Dean Crowley
Baseball	Bill Clark
Basketball	Dean Crowley
Calendar/Council Dates	Stan Thomas
Championship Programs	Chris Thomas
CIF-SS Bulletin	Scott Cathcart
Council	Stan Thomas
Cross Country	Dean Crowley
Eligibility	Administrative Staff
Executive Committee	Stan Thomas
Field Hockey	Karen Hellyer
Film Library	Kay Larson
Football	Bill Clark
Games Wanted/Coaching Positions	Kris Shute
Golf	Dean Crowley
Gymnastics	Karen Hellyer
Life Pass/Hall of Fame	Stan Thomas
Master Schedules	Scott Cathcart
Media and Public Relations	Scott Cathcart
Officials (Assignments/Liaisons)	Bill Clark
Press Release	Scott Cathcart
Rule Books	Karen Hellyer
Sanctioned Events	Administrative Staff by Sport
Soccer	Karen Hellyer
Softball	Karen Hellyer
Sportsmanship Awards Program	Scott Cathcart
Swimming and Diving	Bill Clark
Symposium	Dean Crowley
T-Shirt Sales	Jo Eble
Tennis (Boys)	Bill Clark
Tennis (Girls)	Karen Hellyer
Top-Ten Polls	Scott Cathcart
Track and Field	Dean Crowley
214 Forms	Karen Hellyer
Volleyball	Karen Hellyer
Water Polo	Bill Clark
Wrestling	Bill Clark

PLEASE POST

CIF SOUTHERN SECTION CORPORATE SPONSORS

Supporting Tomorrow's Stars Today

REEBOK: Primary Title Sponsor of State-Wide CIF.

PEPSI-COLA: Official Sponsor of State-Wide CIF.

CALIFORNIA ANGELS: Co-Sponsor of Academic Awards Program.

CONLIN BROS. SPORTING GOODS: Official Sporting Goods Team Dealer of the CIF-SS.

FORD MOTOR COMPANY: Co-Sponsor of Academic Awards Program.

GATORADE: Official Thirst Quencher of the CIF-SS.

HERFF JONES: Official Awards Company of the CIF-SS.

JACK-IN-THE-BOX: Official Fast Food Restaurant of the CIF-SS.

SPORTSCHANNEL: Cable Television Home of the CIF-SS.

SUNNY DELIGHT: Official Citrus Punch of the CIF-SS.

WILSON SPORTING GOODS: Official Ball of the CIF-SS.



PRIMARY TITLE SPONSOR STATE-WIDE



OFFICIAL SPONSOR
STATE-WIDE



Wilson
The Official Ball . . .



**Sunny
Delight**

Conlin Bros.
Sporting Goods



HERFF JONES

RECOGNITION • EDUCATION • MOTIVATION