

**HISTORY OF THE CALIFORNIA
INTERSCHOLASTIC FEDERATION
SOUTHERN SECTION
CIF-SS**

58th historical “tidbit.”
Dr. John S. Dahlem



THE CIF-SS SPORT OF ROWING – CREW

The 1932 Olympic Games staged in Los Angeles provided the impetus for the beginning of high school rowing or crew. Long Beach Marine Stadium, which was built for the Olympic Games, became the home of high school rowing from 1932 until the war years of the early 1940's. The eight oared shell “Sakura,” which was rowed by the Japanese 1932 Olympic team, was purchased by the Long Beach Commission and in the fall of 1932, nine Long Beach Wilson High School boys took it down the Marine Stadium course. Another shell, a Tye, was purchased from a movie company. Long Beach Poly and Compton High Schools joined Wilson two years later and since the spring of 1935 there was a regular staging of a high school championship. The championship was called the Long Beach Interscholastic Rowing Regatta. In addition, those three schools also competed against high schools from the North in the California State Prep Rowing Championships which were also held at Marine Stadium. Alameda High School, winner of the Northern California title, was the dominate high school team in the state. The Alameda High School crew was coached by the famous University of California rowing coach Ky Ebright. The Long Beach crews were coached by Fred Woods, Peter Archer and Crafton Pauls. Poly, Wilson and Compton High Schools also competed against the local junior colleges and universities. Many of the local high school rowers went on to row for the top college teams in the nation.



Sixth Annual Long Beach Interscholastic Rowing Regatta MAY 11, 1940

Sponsored by The Long Beach Recreation
Commission and The Long Beach Board of Education

OFFICIALS

Board of Stewards: Clyde Doyle, Walter Scott, Dr. Frank Harnett,
David Burcham, Harry J. Moore, Scott Thompson.
Starter: Graften Pauls. Judge of Finish: Frank Adams. Timers:
James Swan and Pete Archer. Judges of the course: Roland T. Davis,
Walter Bell, Sydney Foster, Selmer Ostlie.
Crew Queen for Wilson: Rosemary Trucano
Crew Queen for Poly: Blythe Teters.
Crew Managers for Wilson: James McIntyre, Sam Moore, Ken
Shuster, Oliver Smith and Robert Panter.
Crew Managers for Poly: Ed Baralson, Gerald Hanewinkel, Gene
Fisher, Paul Lamp, Major Scobey and Stanley Smith.

THE METHOD OF SCORING

As a result of the first regatta, staged April 13, Wilson and Poly
tied with eight points apiece, and with Compton having two chalked up
to their credit. Of the seven races four count in the point system to
decide the high school championship—the varsity and junior varsity
and the lightweight varsity and lightweight junior varsity. One point
is scored by the school entering a crew and one point for each crew that
it defeats, so that if there are three crews in the race the winning boat
receives three points, one for entering and one for each of the two boats it
led to the finish. The point standing at the end of the May 25 regatta will
definitely decide which school is entitled to rate itself city champions
and take possession of the J. Lynn Avery Trophy for the year 1940.

HOW TO TELL THE CREWS APART

The lanes are numbered from the north side of the course to the
south side so that lane 1 is the north side of the course and lane 4 is
the grandstand or south side of the course.

First Race: 1:00 P. M. Distance 1500 Meters.

Wilson 5th Varsity rowing Panther in Lane 2: Bow-Bill Lemley,
2-Wendall Tiffany, 3-Charles Goodwin, 4-Bill Blackwell, 5-Joe Reed,
6-Jack Witz, 7-Bill Clay, Stroke-Bob Bruns. Coxswain

Wilson 4th Varsity rowing Tyet in Lane 3: Bow, Floyd Swanson,
2 Vance Karil, 3 Audley Irvine, 4 Harvey Rookus, 5 Dick Lindemann,
6 Walter Heyer, 7 Steve Aiken, Stroke James Feltham, Coxswain Louis
Brenton.

Poly 4th Varsity rowing Sakura in Lane 4: Bow Jack Calori, 2 George
Divine, 3 Steve Lloyd, 4 Michael Glass, 5 Dick Burke, 6 Jeff Olson, 7
Lloyd Barry, Stroke Howard Krause, Coxswain Ed Slocomb.

1. 2. 3.

Time
Second Race: 1:30 P. M. Distance 1000 Meters.

Poly 4th Lightweights rowing Tree in Lane 3: Bow Paul Crum, 2
Gene Fesler, 3 Norman Price, 4 Dick Cole, 5 Kenneth Kapp, 6 George
Johnston, 7 Wesley Lilley, Stroke Bob McIntyre, Coxswain Glenn Barnes.

Poly 3rd Lightweights rowing Panther in Lane 2: Bow Jeff Webb, 2
Hoover Pratt, 3 Chester B. Walker, 4 Albert Brown, 5 Laird Walline, 6 Bill
Sage, 7 George Brown, Stroke Tom Sykes, Coxswain Leslie Reilly.

Wilson 3rd Lightweights rowing Sakura in Lane 4: Bow Hugh Wide-
teck, 2 Richard Rumble, 3 Frank Wilson, 4 Howard Hoyt, 5 Maurice
O'Conner, 6 Bob Marks, 7 Bill Vessey, Stroke Gilbert Krueger, Coxswain
Don Gates.

1. 2. 3.

Time

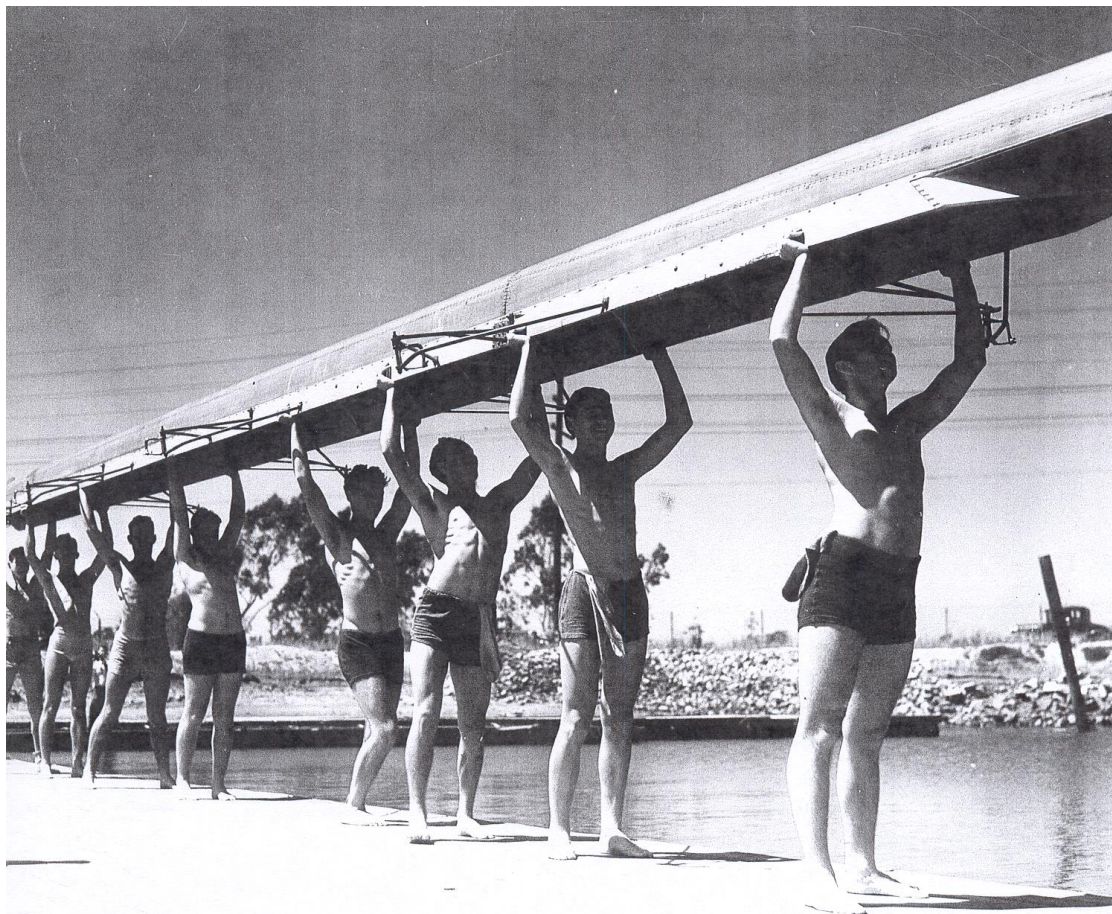
JACKRABBITS TURN TO WATER

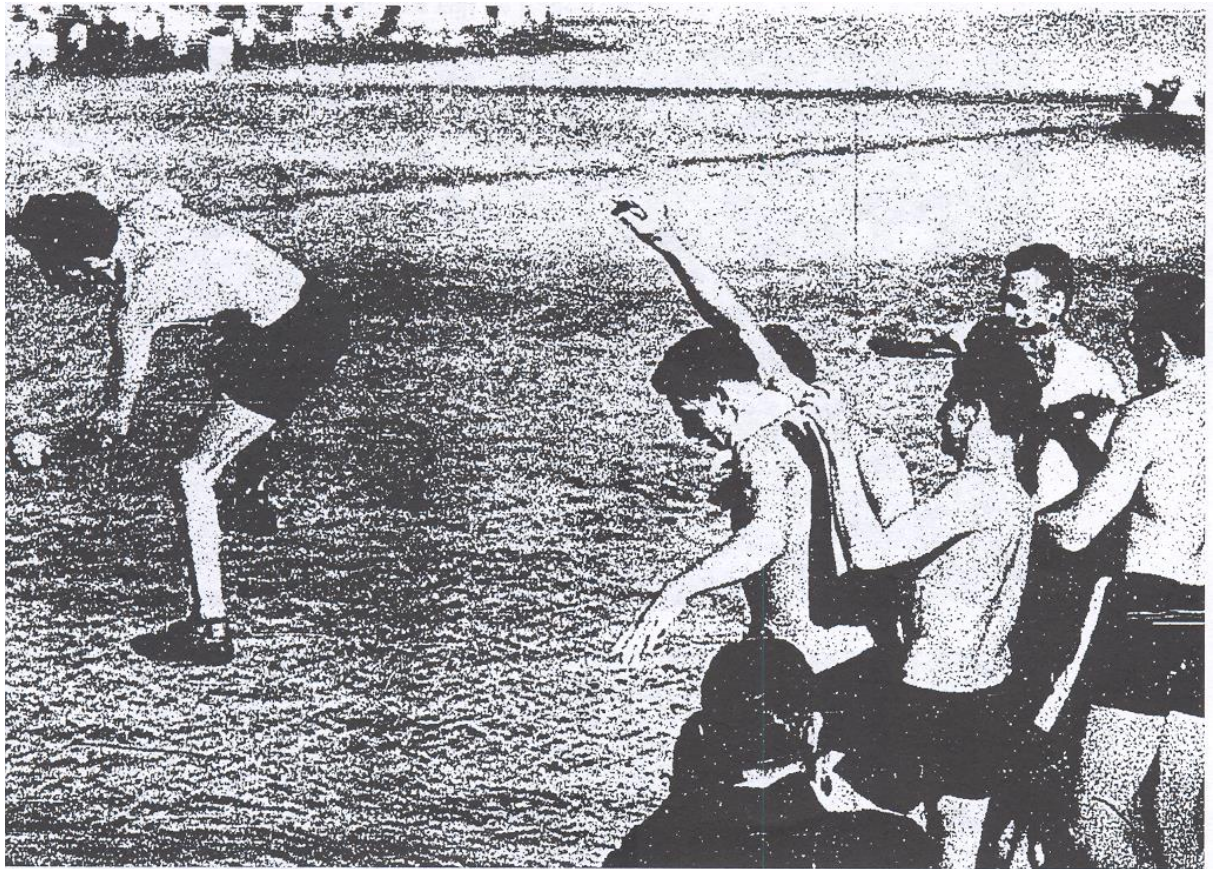


Trained by Coach Peter Archer, the Long Beach High School crew candidates drill at Marine Stadium in their training barges.

Wide World photos

Long Beach Wilson crew working out.





Just an old regatta custom—a winning coxswain gets a ducking in approved varsity fashion as the jubilant high school crew celebrates.



Alameda Crew Annexes Honors

**Northern California
Preps Best Wilson,
Poly, Compton Eights**

LONG BEACH, May 6. (Exclusive)—Alameda High's powerful crew captured the State prep rowing championship at Marine Stadium here today by defeating Woodrow Wilson, Long Beach Poly and Compton High eights.

Wilson was second by a length, Poly third a half-length behind Wilson, and Compton third a length and a half behind Poly.

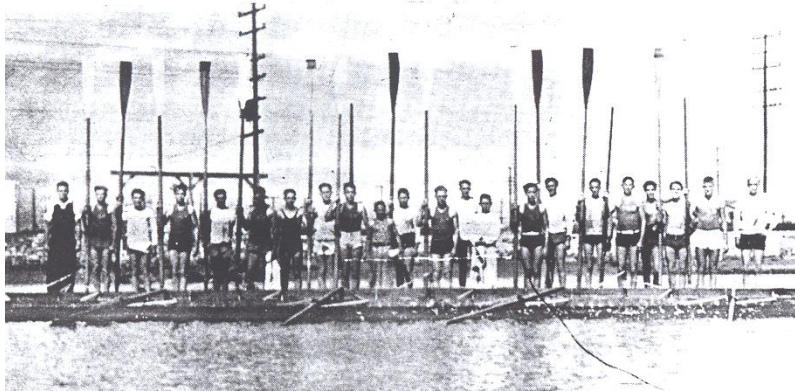
Alameda, coached by Ky Ebright of the University of California, established a new 1500-meter course record with the time of 4m. 59.8s., which betters by 8.8s. the mark set by Poly.

ROWED EVENLY

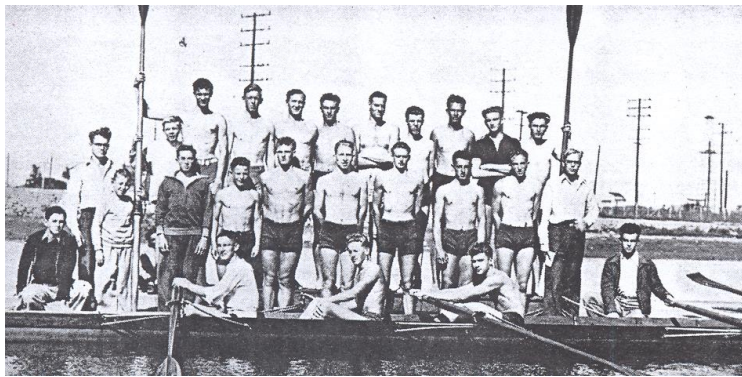
The four crews rowed evenly the first 500 meters, but at that point Alameda, undefeated for two years and recent winner of the Northern California title, pulled away to a half-length lead. At 1200 meters the northern shell had a lead of more than a length. A terrific sprint by Wilson, which started too late, cut the advantage to a length.



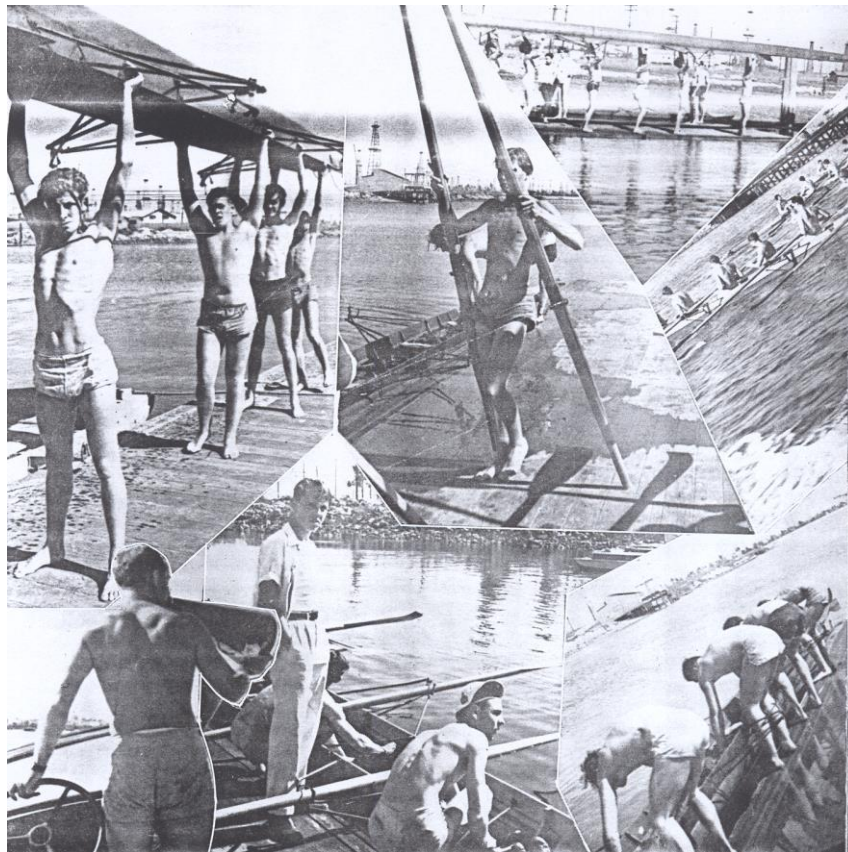
First Long Beach Poly Crew Team – 1935



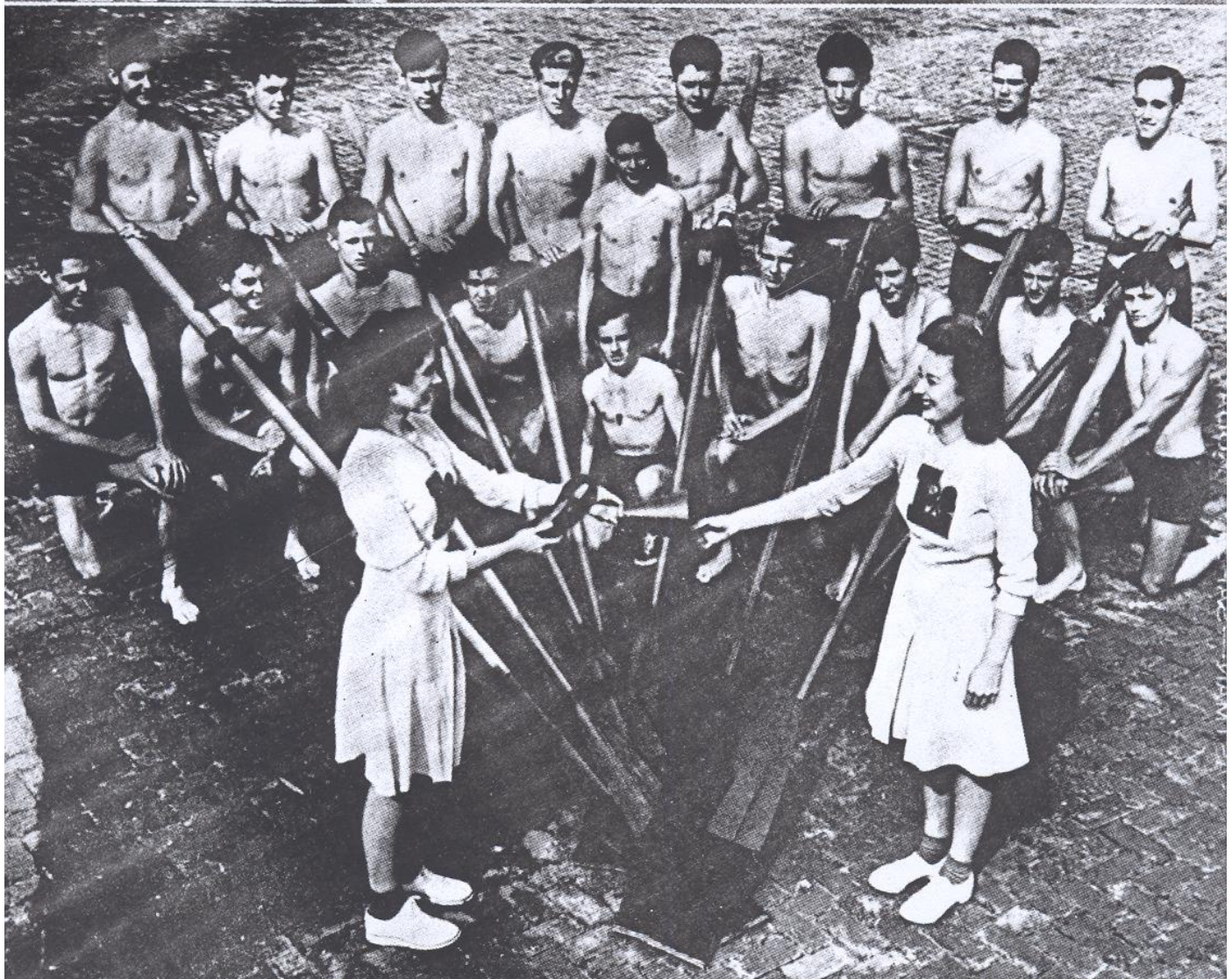
Poly's 1936 rowing team



Poly's crew in action at Marine Stadium

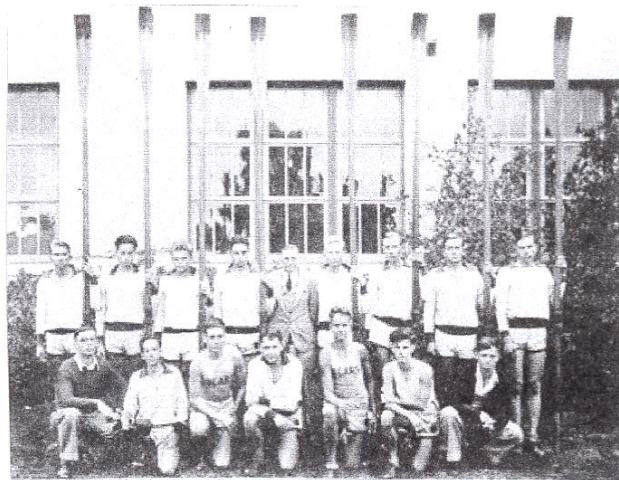


Long Beach Poly Rowing Team and Cheerleaders with crew megaphone
1941



1933-1934 Long Beach Wilson crew – the first organized high school rowing crew in California.

ROWING—With the distinctive honor of being the first organized high school rowing crew in California, Wilson's Varsity sweepsters have completed their first year of competition. In their first race, the Bruins, coached by Fred Woods and stroked by Captain Morss, swept down the 2000 meter Olympic course in 7 minutes and 59 seconds following close in the wake of Sacramento J.C., the U.C.L.A. Freshmen, and the Long Beach Rowing Club, who finished in that order. In a match race with the U.C.L.A. Frosh, Wilson pulled in two lengths behind over a 2000 meter course. Wilson's best practice time was 7:14. Credit for inaugurating rowing in Wilson's sports calendar goes to Ben Detherage, while Roy Ferris, manager, was instrumental in arousing interest in Wilson's latest sport.



Rowing—First Row: Mgr. Ferris, Mc Ginn, Detherage, Holtz, Maitland, Wright, Hambleton. Second Row: Capt. Morss, Wood, Crum, Morton, Coach Wood, Work, Adams, Baylis, Harris.

