

Sanctioned by
California
Interscholastic Federation

HISTORY OF THE CALIFORNIA
INTERSCHOLASTIC FEDERATION
SOUTHERN SECTION
CIF-SS

Eastern Sierra
Invitational High School
Ski Meet
Bishop, California
March 28 and 29th

56th historical “tidbit.”
Dr. John S. Dahlem

CIF-SS HIGH SCHOOL SNOW SKI MEETS
MAMMOTH MOUNTAIN
1940 & 1941

... “A heavy snowstorm accompanied by a high wind added a little tang to the sport.”

The CIF Southern Section sanctioned the Eastern Sierra Invitational High School Ski Meet at Mammoth Mountain on March 28-29, 1940. The event was sponsored by the Eastern Sierra Ski Club and Bishop Union High School. The meet was to be held at McGee Mountain, but due to lack of snow the meet was moved to Mammoth Mountain near where the current Chair #1 lift is located. The Bishop Union High School Principal was Robert H. Blee (President of the CIFSS in 1935), an avid skier, and the Girls League held a dance for the visiting contestants. Eight schools with twenty-nine entries took part in the competition during a heavy snowstorm. Billy Becdolt (Bechdolt) of Lake Tahoe High School won both the Slalom and Downhill Slalom races. The Cross Country race was held at Crestview near Mammoth. Portola High School won the “Dorrance Keough Perpetual Ski Trophy,” gift of Mrs. Dorrance Keough of McGee Creek Lodge.



Student's Ski Meet Planned

**Bishop High School Plans
Tourney and Invites
Southland Enthusiasts**

A ski-minded principal and the teachers of Bishop Union High School have laid plans—and received the O.K. from C.I.F. officials—to stage the first interscholastic ski meet ever held in California. Dates are March 29-30.

Invitations are now in the mails from Principal Robert H. Blee to all high schools in Southern California to send their skiers up to the Inyo-Mono country.

TWO SITES PICKED

As planned, the events will be run on the McGee Mountain slope. But if snow should be short, the meet will be held on Mammoth Mountain, scene of last year's California State meet.

The Eastern Sierra Ski Club, host of last year's championship races, will conduct the events, which include a cross-country race on March 29 for boys, slalom for boys and girls, March 30, and giant slalom (to take the place of downhill) for boys, afternoon of March 30.

SANCTION PROMISED

Seth Van Patten, secretary of the southern section of the California Interscholastic Federation—governing body of high school athletics—informed Principal Blee that if the meet is successful he hopes to include skiing in the list of C.I.F.-sanctioned athletic contests.

The meet is open to any regular high school student who conforms to the eligibility rules as set down by the C.I.F.

C. I. F., SOUTHERN SECTION MONTHLY BULLETIN

Vol. 3

MARCH, 1940

No. 7

SKI JUMPING MEET SANCTIONED FOR C. I. F., SOUTHERN SECTION, SCHOOLS

A sanction has been issued to the Bishop High School to hold an Invitational Skiing Meet for pupils of the schools of the C. I. F., Southern Section.

The events will take place on March 29 and 30 on the slopes of McGee Mountain, 35 miles north of Bishop.

The events to be included are a cross country for boys on March 29, a slalom for boys and girls on March 30, and a giant slalom for boys March 30.

The actual details of the events will be handled by the officials of the Eastern Sierra Ski Club.

The success of this meet will determine to a large extent the attitude of the Council of the C. I. F., Southern Section, toward ski meets in the future for our high school pupils.

The Girls League of the Bishop High School is planning a dance for the visiting contestants on Saturday evening, March 30.

Championship Ski Meet Set

California Event
Starts Today
at Badger Pass

BY ETHEL SEVERSON

This will be another big week-end at Yosemite. The California divisional downhill, slalom and combined championships will be held today and tomorrow at Badger Pass. Snow conditions are expected to be excellent, as there is a six-foot pack on all slopes.

The downhill races will be run on Rail Creek, with the finish line about three-quarters of the way down. The racers will be required to take two runs over this course today, one a controlled run with four to six control gates on the Big Hill, and the other without the control gates. The best total time in the two runs will determine the winners of the downhill championships.

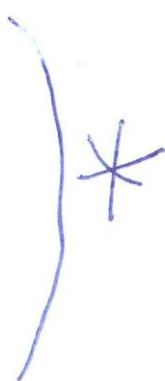
ENTRIES NAMED

Among the entries are Roy Mikkelsen and Leroy Teagarden of the Auburn Club, Bill Janss, captain of the Stanford ski team; Bob and John Blatt, Leroy Rust, winner of the Pacific Coast intercollegiate downhill and combined; Courtland Hill and Dave McCoy, Eastern Sierra; Earl Merritt and Muir Dawson of the Sierra Club; who have been winning races in Southern California; Frazer West of Auburn Ski Club; Bob Lally, Merl Ashworth and Barney Moen, Yosemite Winter Club; Bud McDuffie of Stanford and Bob Burns of Mt. Lassen. Women entries include Gabe Goldsworthy, State slalom and combined champion; Mary Proctor, State downhill champion; Kathleen Starrett and Marcelle Barkley of Lake Tahoe; Mary Jane Edwards of the Sierra Club, a Los Angeles girl; Berry Lombardi, present ladies' B Class champion; Bernice Wallace of Stockton, and Tookie Spreckels of the Yosemite Winter Club.

The slalom races will be run tomorrow on a course set by Luggi Foeger on the Big Hill at Badger Pass.

McCOY WINS

McGee Mountain, on the east side of the Sierra, was the scene of the Inyo-Mono championship ski meet last week-end. Dave McCoy, president of the Eastern Sierra Ski Club, took first place in all three men's events, with a combined time of 85.54s. Second place went to Chet Janes with a time of 92.04s. Frankie Stevens, who will participate in the C.I.F. interscholastic meet, was third with a time of 93.44s. Twelve-year-old Irving Dow sailed into fourth place.



SIERRA SKI CLUB SPONSORS SLALOM COMPETITION SUNDAY

BY ETHEL SEVERSON

The ski calendar for the next three weeks is crowded with meets and other events. Locally, the Mount San Antonio Spring slalom races, sponsored by the Ski Mountaineers of the Sierra Club, will be held Sunday on the slopes near the San Antonio Ski Hut. The races will begin at 10 a.m., and there will be an event for women as well as one for men.

At Yosemite, where skiing is still excellent, a series of events is scheduled. Tomorrow the Wilbur May Challenge Trophy Race will be held on the Rail Creek course. This is a race for Yosemite Winter Club members only, which in the past two years has been won by Gabe Goldsworthy and Leroy Rust, giving them two legs on the trophy.

OTHER EVENTS

Other events scheduled at Yosemite include the weekly Winter Club slalom Sunday, as well as gold and silver ski tests and the third-class tests;

a relay race and second-class tests on Tuesday, March 19; the Yosemite Winter Club Derby; ski tests, and the final Winter Club party at the Ahwahnee Wednesday. Thursday, March 21, is a big day for the Juniors, with downhill and slalom competitions, and a children's party at Badger Pass Ski House in the evening.

HIGH SCHOOL MEET

At least a dozen schools have indicated they will enter the high school ski meet, the first of its kind in California, to be held in the Inyo-Mono area under the sponsorship of Bishop High School, March 29 and 30. There is still plenty of snow at McGee, Crestview, Little Round Valley, Conway and Devil's Gate.

The national four-way championships are now in progress at Mt. Baker, Washington, with downhill and slalom races being held at Baker, and the skiers traveling to Snoqualmie Pass and Ski Bowl for the cross-country and jumping competitions. Two of the principal bidders for jumping honors will be Alf Engen of Sun Valley, Ida. and Torger Tøkle of New York.

The eyes of all skiers will turn to Sun Valley March 22, 23 and 24, when the famous Sun Valley Opens will be run off. This is probably the most glamorous of the ski meets held in the West, attracting as it does the cream of both amateur and professional skiers, for slalom, downhill, cross-country and jumping competition of the highest order.

C. I. F., SOUTHERN SECTION MONTHLY BULLETIN

Vol. 3

APRIL, 1940

No. 8

BISHOP SKI MEET

The First Annual Ski Meet put on by the Bishop High School March 29 and 30 was a complete success from every standpoint. Eight schools took part. There were twenty-nine entries.

The activities on Saturday, March 30, were carried on on the slopes of Mammoth Mountain fifty miles northwest of Bishop at an elevation of about 9000 feet. A heavy snowstorm accompanied by a high wind added a little tang to the sport.

Some of our schools, in this metropolitan area, think they are being heroic when they go as much as twenty or twenty-five miles to take part in an athletic contest. Bishop had to go fifty miles to get to its own home snow field.

The Commissioner of Athletics has always admired the pluck and enthusiasm of our small outlying schools in battling adverse conditions in athletic competition. When we saw the boys and girls on skies do their stuff on March 30 it exemplified pluck and enthusiasm of a variety new to us.

We hope to see the Bishop Ski Meet grow into a great annual event.

El Pinos 1940
BISHOP UNION HIGH SCHOOL
Yearbook

SKIING—



George Kinney



Frank Stevens



Dean Kiner

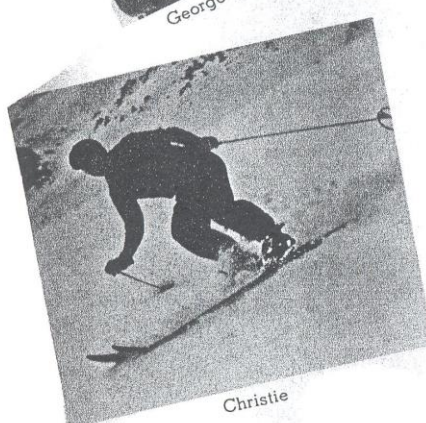


Paul Patten

C. I. F. SKI MEET

The first interscholastic high school invitational ski meet to be held in Southern California was held at Crestview and Mammoth Mountain on March 29th and 30th. The meet was officially sanctioned by the California Interscholastic Federation and conducted under the auspices of Bishop Union High School and the Eastern Sierra Ski Club.

Considering this that was our first ski meet, we were very pleased with the results and are looking forward to the possibility of conducting an all-state invitational high school ski meet next year.



Christie



Bad Weather

- DOWNHILL**
 1. Westwood
 2. Portola
 3. Bishop

- SLALOM**
 1. Portola
 2. Westwood
 3. Bishop

- CROSS COUNTRY**
 1. Portola
 2. Westwood



Waxing



Meinke



Ski Heil



Sitzmark—almost



Dr. Scott

The Inyo Regis

BISHOP, INYO COUNTY, CALIFORNIA, THURSDAY, APRIL 4, 1940

VOLUME 56

INVITATIONAL MEET WON BY PORTOLA

Occasion Success. — Results of
Mono Club Meet

The first Eastern Sierra invitational high school ski meet, sanctioned by the California Interscholastic Federation and conducted under the auspices of the Eastern Sierra Ski Club and Bishop union high school, started Friday afternoon with the cross-country race held at Crestview.

The Portola high school ski team, winner of the C. I. F. northern division ski meet, took first and second places in the cross-country, Tahoe third and Bishop fourth.

Saturday, in typical ski-meet weather (storming), the giant slalom and slalom races were held at Mammoth mountain. Billy Bechdolt from Lake Tahoe placed first in both events and Jerry Hiatt from San Diego was second. Billy and Jerry were the two outstanding skiers in the meet, however two of the local boys, Dean Kiner and Frank Stevens of Bishop, did very well—Frank was fourth in the cross-country and fifth in the giant slalom and slalom. Dean was fourth in the slalom and ran a very pretty race.

Individual Results

Cross country—David King (Portola), 30:06; Howard Thurston (P.), 31:23; Billy Bechdolt (Tahoe), 31:25; Frank Stevens (Bishop), 31:39 3-5; Wm. Williams (P.), 31:43.

Giant slalom — Billy Bechdolt (T.), 1:10; Jerry Hiatt (San Diego), 1:13 4-5; Don Brand (Westwood) 1:14; Dick Carnell (T.), 1:21; Frank Stevens (B.), 1:21 2-5.

Slalom—Billy Bechdolt (T.), 40:2, 39:4—80.1; Jerry Hiatt (S. D.), 44.2, 42:3—87; Dick Carnell (T.), 47.2, 44.3—91.4; Dean Kiner (B.), 47.0; Frank Stevens (B.), 54:0, 45.1—99.1.

Figured on a four-man team basis by taking the total times of the four team members, Portola won the Keough perpetual ski trophy donated by Mrs. Dorrance Keough of McGee Ski Lodge, Westwood was second and Bishop third.

The ski meet was climaxed by a
(Continued on third page.)

SKI CONTESTS

(Continued from first page.)

leap year ski dance sponsored by the Girls' League and held in the high school auditorium. Music was furnished by Betty Parent, Newton Evers, Glenn Taylor, Gilman Harvier, Ray Semms. At 10 p. m. Mr. Blee welcomed the visiting skiers and introduced Dr. C. L. Scott, member of the Board of Directors of the Eastern Sierra Ski Club who presented ski pin awards to the individuals who placed first, second and third in each event and the Keough trophy to the captain of the Portola ski team.

The meet was the first interscholastic ski meet to be held in southern California. The schools entered from northern California were extremely enthusiastic and felt that our location was such that an all-State high school ski meet could be successfully held here next year.

The students of Bishop union high school wish to express their appreciation to the members of the Eastern Sierra Ski Club for their cooperation in conducting the meet. If it had not been for the interest and work of the ski club, it would not have been possible to hold the meet here. We wish especially to thank the race committee, Chet Janes, Fred Meckel, Tex Cushion, George Deibert and Claude James; also Sepp Benedict, ski instructor at Little Round Valley, who set the slalom course and was a forerunner in giant slalom and slalom races.

Everyone agreed that the first Eastern Sierra invitational high school ski meet was a success and will be looking forward to a bigger and better meet next year.

Mono Ski Contest

An 8-inch fall of new snow along with perfect weather presented ideal conditions for holding the first annual Mono ski club championship races at Conway summit on Sunday, March 31.

The first event of the day, the women's downhill race, was won by Eunice Yongue in the fast time of 65 seconds. She was closely followed by Patsy Hess for second in 71 seconds and then came Lily La-Braque in third with a time of 77 seconds. Lillian had taken second place in the State Interscholastic meet held at Mammoth, suffered from a terrific fall in this race which not only slowed her but injured her to the extent that she was forced to withdraw from the following slalom events. Dot Hobbs also suffered a severe fall and was well up to the winning times at that point, and only a slow recovery from the fall kept her out of a winning place. Elma Blaver and Clara White ran their usual fine races.

Night Skiing Latest Feature of Inyo-Mono Winter Program

BISHOP, Jan. 18. — Residents have taken to the sport in a big way, are clamoring for new improvements, bigger and better ski lifts, and, finding the day too short for enough skiing, carry on until late at night.

There are 12 ski lifts in the two counties, beginning at Lone Pine, in the shadow of the highest United States peak, Mt. Whitney, and continuing on for 200 miles to Bridgeport, county seat of Mono County.

Guided by the light of the moon, or by artificial lights on the numerous courses, night skiing has become one of the most popular pastimes of the region.

Indicative of the growth of skiing as a sport, three years ago the Inyo-Mono eastern Sierra region was locked up tighter than an icebox during the winter months. Mail moved by dog team. Resort owners locked up with the first snowfall to return with the spring thaw. Local residents sat around the fire and whittled.

Now all is changed. New road equipment keeps the main Los Angeles to Reno highway open the year around, even during the most severe storms. A majority of the resorts are open and crowded to capacity during the winter months with Southland skiers. And the local people

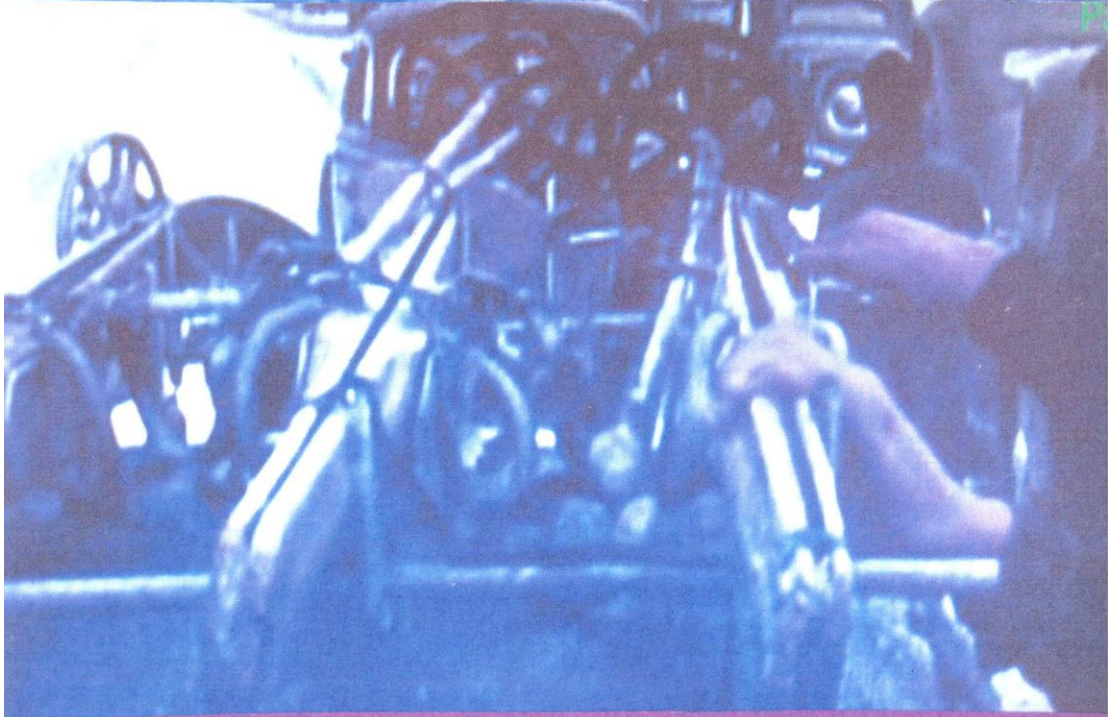
Ski clubs in most of the towns hold tournaments during the season, while Bishop High School acts as host to the only high school ski meet in Southern California.

“Snips” from video on the ski meet:

Sponsored by
Eastern Sierra Ski Club
and
Bishop Union High School

Cross-country race held at
Crestview
Won by Portola High School

Portola High School Wins the
“Dorrance Keough
Perpetual Ski Trophy.”

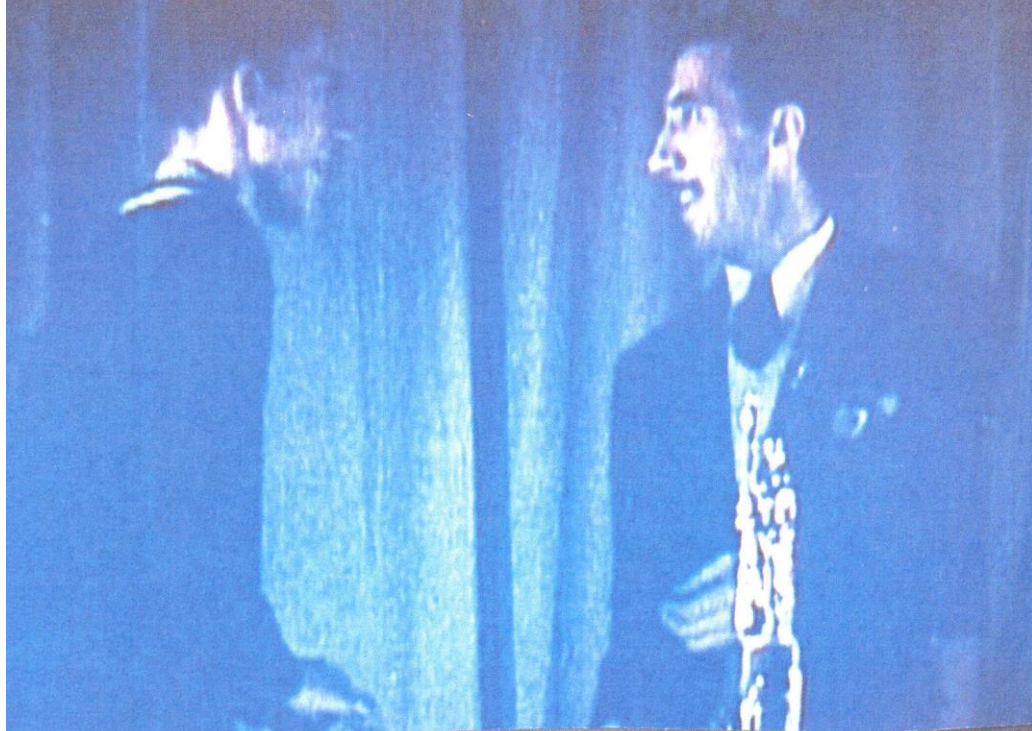


**Billy Becdolt of
Lake Tahoe
places first in both
Slalom and Downhill Slalom**









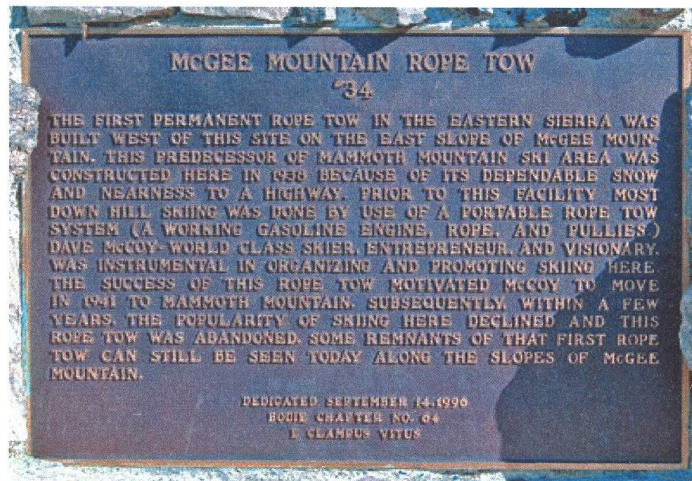
SECOND ANNUAL INVITATIONAL HIGH SCHOOL SKI MEET

CIF-SS

March 8, 1941

McGee Mountain

(35 miles Northwest of Bishop, CA)



Skiers Gather at Yosemite

State Class B
Championships on Tap
at Valley This Week-end

SECOND MEET

The biggest news from Inyo-Mono concerns the second annual C.I.F. (California Interscholastic Federation) High School Ski Meet, which will be run off on McGee Mountain today and tomorrow. The cross-country race will be featured today, and a slalom and giant slalom race tomorrow, the meeting being sponsored by the Bishop Union High School and the Eastern Sierra Ski Club. Entries have been received from Westwood, Portola, Palo Alto, Independence, Big Pine, Leevining and San Diego High Schools, with Reno, Lake Tahoe, Lancaster and others expected. The prize at stake is the Keough Perpetual Ski Trophy, gift of Mrs. Dorrance Keough of McGee Creek Lodge.

SECOND ANNUAL INVITATIONAL HIGH SCHOOL SKI MEET

The Second Annual Invitational High School Ski Meet was sanctioned by the State Council of the C. I. F. It was held March 8, 1941. Bishop High School was the sponsor. The Eastern Sierra Ski Club assisted the Bishop High School in handling the details of the meet.

The four events of the meet were run off on the slopes of McGee Mountain which is thirty-five miles northwest of Bishop.

Schools entering teams in the meet were Bishop, Independence, Leevining, Palo Alto, Portola, Reno, Sonora, and Westwood.

Events

Winners

Downhill Race

Tie (Cliff Banta — Leevining
(Chelton Leonard — Reno

Slalom

Irving Dow — Independence

Cross Country

Peter Davidson — Westwood

Straight Race and Slalom

Ashley Baker — Reno

