

HISTORY OF THE CALIFORNIA INTERSCHOLASTIC FEDERATION SOUTHERN SECTION (CIFSS)



15th historical “tidbit.”

Y.M.C.A. Clubhouse and Field

THE VARIED HISTORY OF THE CIFSS OFFICE

The current CIFSS office in Los Alamitos is an excellent facility to support the needs of over 560 high schools competing in interscholastic sports...it has not always been that way. When the CIFSS was founded in 1913, there was no office and most of the business was done by individual administrators in their home schools or by managers assigned to conduct specific contests. Early quarters included dingy basements, surplus school rooms and even a home. Seth Van Patten, the first CIFSS secretary and first commissioner, did most of his work at home or at individual school sites. The CIFSS first “official meeting” after the founding (which was on March 29, 1913, at the Y.M.C.A. Field) was May 15, 1913, on the campus of Los Angeles High School which served as the primary meeting place of the CIFSS Council for many years. The meetings were usually held in the drama room or room #247. The other major meeting place of the CIFSS was the downtown Los Angeles YMCA room # 508.



Los Angeles High School



YMCA

The fledgling organization also met at the University Club in Los Angeles, Los Angeles Poly High School, Long Beach High School, Y.C.M.A. Clubhouse in Boyle Heights, Security Building, Athletic Club of Los Angeles, Occidental College, Pomona College, Manual Arts High School,

Van Patten's residence, U.S.C., the Bible Institute and even the "Cave Room" of the Maryland Hotel in Pasadena, In addition, the Council met at the sites of the sporting events.

The CIFSS continued to grow and was able to establish themselves even in the face of the daunting depression. Finally, in May of 1928, the CIFSS Council passed a motion which stated, "...power to take final action in regards to a part-time secretary with a maximum budget for salary of himself and secretary at \$1,500." At the September 29, 1928 meeting a motion was passed which stated, "...that Mr. Oliver be authorized to make all the necessary purchase of furniture and equipment for the secretary's (Van Patten) office." The CIFSS Council held their December 20, 1928 meeting on the third floor of the auditorium at **Central Junior High School...the first official home of the CIFSS.** The May 17, 1930 Council minutes defined the operational status of the office as:

- Sum of \$200 to be spent to better the appearance of the office and equipment.
- Office hours of the Commissioner of Athletics are extended to cover the hours of 1 p.m. to 5 p.m. on school days.
- The salary of the Commissioner to be \$2,000 per year payable monthly.
- That Seth F. Van Patten be the Commissioner.
- Office clerk help from the junior high school.

The first stationary appears on the October 4, 1930 bulletin.

SETH F. VAN PATTEN
COMMISSIONER OF ATHLETICS
OFFICE HOURS, 1 TO 4:30 - SATURDAYS, 9 TO 12

MUTUAL 7536

CALIFORNIA INTERSCHOLASTIC FEDERATION SOUTHERN SECTION

CENTRAL JUNIOR HIGH SCHOOL
451 N. HILL STREET, LOS ANGELES, CALIFORNIA

Central Junior High School



SETH VAN
PATTEN

The next CIFSS home was Belmont High School when a move was made in May of 1936.



J. W. MEANS
PRINCIPAL, TUSTIN HIGH SCHOOL
PRESIDENT OF THE COUNCIL

SETH F. VAN PATTEN
COMMISSIONER OF ATHLETICS



BELMONT HIGH SCHOOL
1575 WEST SECOND STREET
PHONE: MUTUAL 7586

EXECUTIVE COMMITTEE
JOHN ALMAN, PRESIDENT
PRINCIPAL, SOUTH PASADENA HIGH SCHOOL
H. J. MOORE, PRINCIPAL
WOODROW WILSON HIGH SCHOOL
ERNEST FISHER, PRINCIPAL
CHAFFEY HIGH SCHOOL
KINTER HAMILTON, PRINCIPAL
HARVARD SCHOOL
S. CHESTER MCINTOSH, PRINCIPAL
PUENTE HIGH SCHOOL

Seth Van Patten returned to one of his previous school assignments as the office moved to South Pasadena High School in September, 1937.



FORMER FACULTY MEMBER RETURNS

Mr. Seth Van Patten, a former member of the faculty, has returned this year as secretary of the southern division of the California Interscholastic Federation, which controls interschool sports. He uses a section of the Academic Building for his office.



Left: Mr. Van Patten, C. I. F. secretary, at his desk in the Academic Building.

CALIFORNIA INTERSCHOLASTIC
FEDERATION SOUTHERN SECTION

SOUTH PASADENA HIGH SCHOOL
South Pasadena, California BLanchard 7-1707

In February of 1942, the CIFSS office moved to the Oneonta School just down the street from South Pasadena High School when safety concerns were voiced over earthquake preparedness. Oneonta School at that time was an elementary school on Fremont Avenue.

**CALIFORNIA INTERSCHOLASTIC
FEDERATION, SOUTHERN SECTION**

THE ONEONTA SCHOOL
1955 Fremont Avenue South Pasadena, Calif.
Telephone CLEVELAND 6-2336

The next home was a second floor apartment in a dwelling house on Fair Oaks in South Pasadena in September 1949, as Mr. Van Patten sought to find a better arrangement and a more permanent home.

**CALIFORNIA INTERSCHOLASTIC
FEDERATION, SOUTHERN SECTION**

1015 Fair Oaks Avenue South Pasadena, Calif.
Telephone SYCAMORE 9-6980

On November 23, 1949, the CIFSS moved to the Helms Hall with the help of Mr. Paul H. Helms. Mr. Helms loved sports and was in the process of establishing the Helms Athletic Foundation which was also housed in the Helms Hall. It was stated in the December, 1949, Bulletin that, "...we have not asked why Mr. Helms invited the CIFSS to occupy office space in this fine building...we think he knows this will all lead to better, finer, and cleaner athletics among our school boys."

**CALIFORNIA INTERSCHOLASTIC
FEDERATION, SOUTHERN SECTION**

8760 Venice Blvd. Los Angeles 34, Calif.
Telephone TEXAS 0-3161



With the increase of office staff and the need for space at the Helms Athletic Foundation, it was felt that after ten years it would be nice if the CIFSS could find their own permanent home. On March 28, 1959, the CIFSSS moved to the "new eye-catching one story structure, built exclusively for the CIFSS." This building was located near Culver City.

CALIFORNIA INTERSCHOLASTIC FEDERATION, SOUTHERN SECTION

5443 W. Washington Blvd., Los Angeles 16, Calif.
Telephone WEBster 1-1423

In 1965, there was again a need to increase office space and land was leased from the Excelsior School District on the campus of Gahr High School. The cost to build the new office building was \$86,960. This office was later remodeled in 1987 to create more room for meetings and staff.

**California Interscholastic
Federation, Southern Section**
11011 Artesia Blvd.
Artesia, Calif. 90701
(213) 860-2414

As the CIFSS entered a new century more schools continued to join and the Gahr facility was overcrowded and the lease was coming due. A search team under the direction of Bill Clark, former Assistant Commissioner, began a through search for a new home. Finally, after some opposition in the Los Alamitos community, a former United States Post Office building was purchased on Pine Street and a move to the refurbished building took place on October 16, 2002.

OFFICE ADDRESS/PHONE/FAX/WEB SITE

**10932 Pine Street
Los Alamitos, CA 90720
(562) 493-9500
FAX: (562) 493-6266
Web Site: www.cifss.org**

CIF SOUTHERN SECTION OFFICE

September 29, 1928 to May, 1936

(7 1/2 years)

Central Junior High School

451 North Hill Street

Los Angeles, California

Room #151

Phone MUtual 7536



CIF SOUTHERN SECTION OFFICE

May 29, 1936 to September 1937

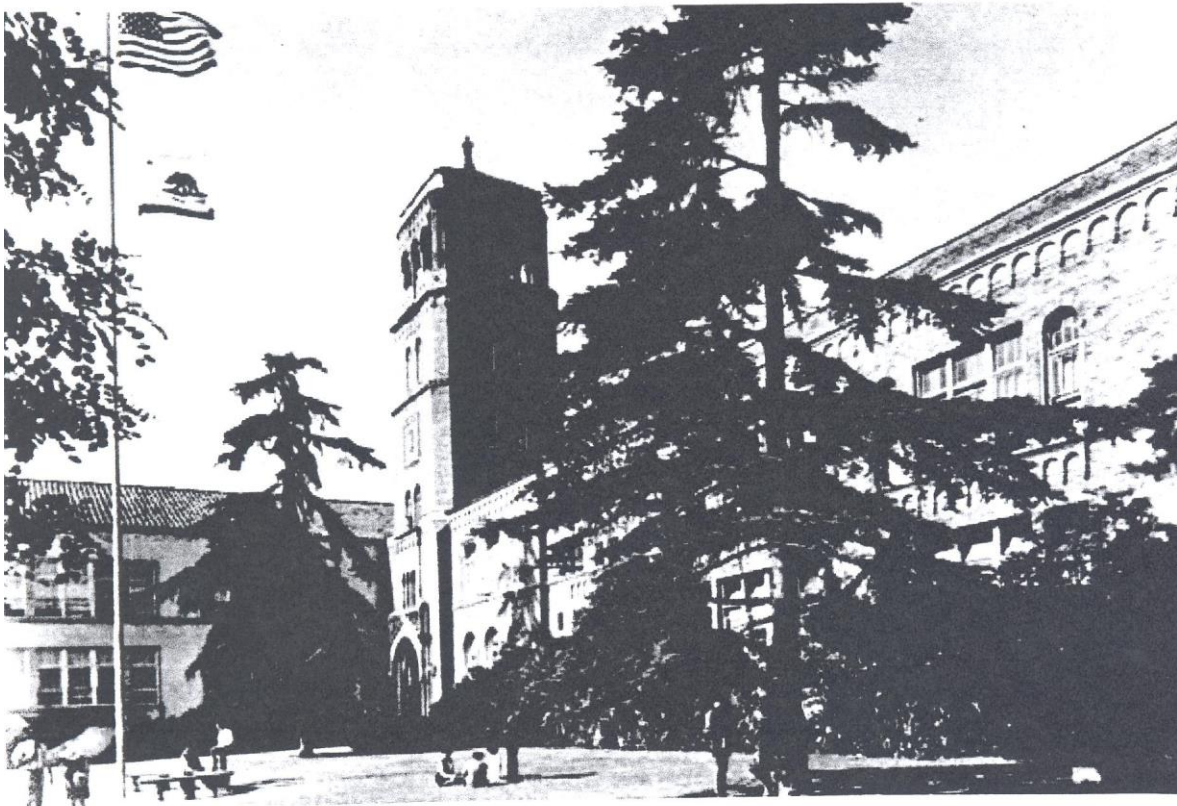
(1 1/2 years)

Belmont High School

1575 West Second Street

Los Angeles, California

Phone MUtual 7586



C IF SOUTHERN SECTION OFFICE

September 27, 1937 to February, 1942

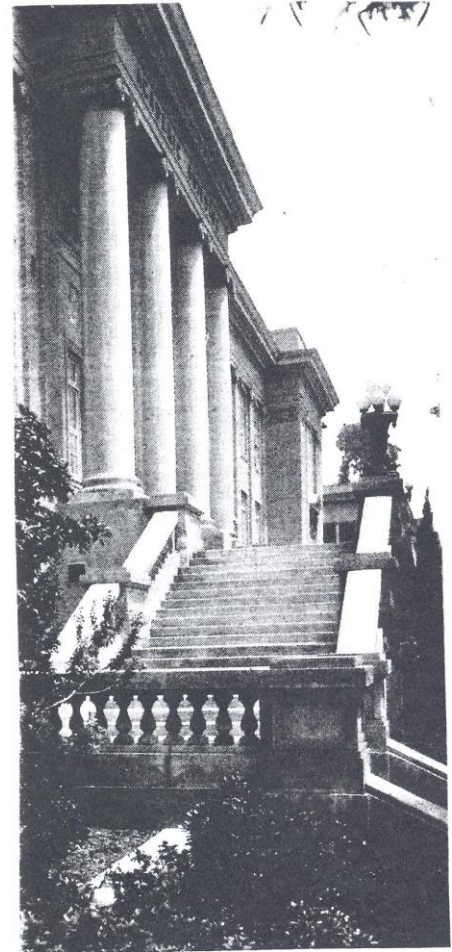
(4 ½ years)

South Pasadena High School

1401 Fremont Avenue

South Pasadena, California

Phone BLanchard 7-1707 – PYramid 1-707

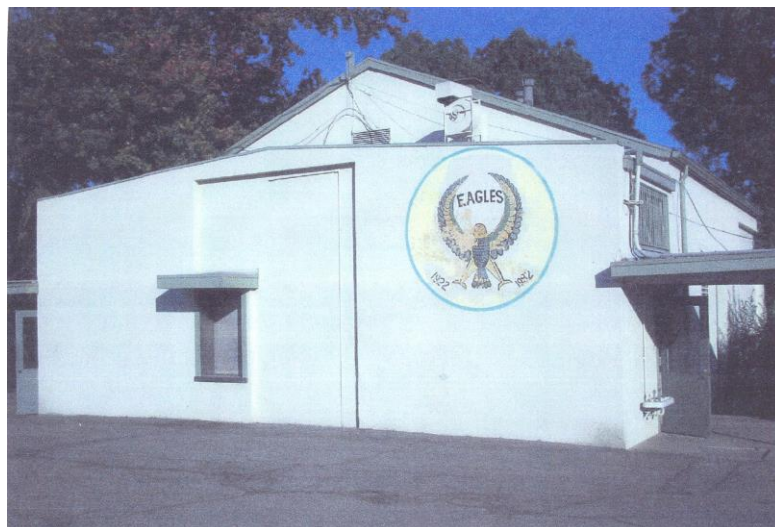


ACADEMIC BUILDING

CIF SOUTHERN SECTION OFFICE

February, 1942 to September 1949
(7 1/2 years)

The Oneonta School
1955 Fremont Avenue
South Pasadena, California
Phone Cleveland 6-2336



CIF SOUTHERN SECTION OFFICE

September, 1949 to November 23, 1949
(2 months)

An Apartment
1015 Fair Oaks Avenue
South Pasadena, California
Phone SYcamore 9-6980



Home of Seth Van Patten in Alhambra when he passed away August 11, 1952. A lot of CIF-SS work was done here.



CIF SOUTHERN SECTION OFFICE

November 23, 1949 to March 28, 1959

(9 1/2 years)

Helms Hall

8760 Venice Boulevard

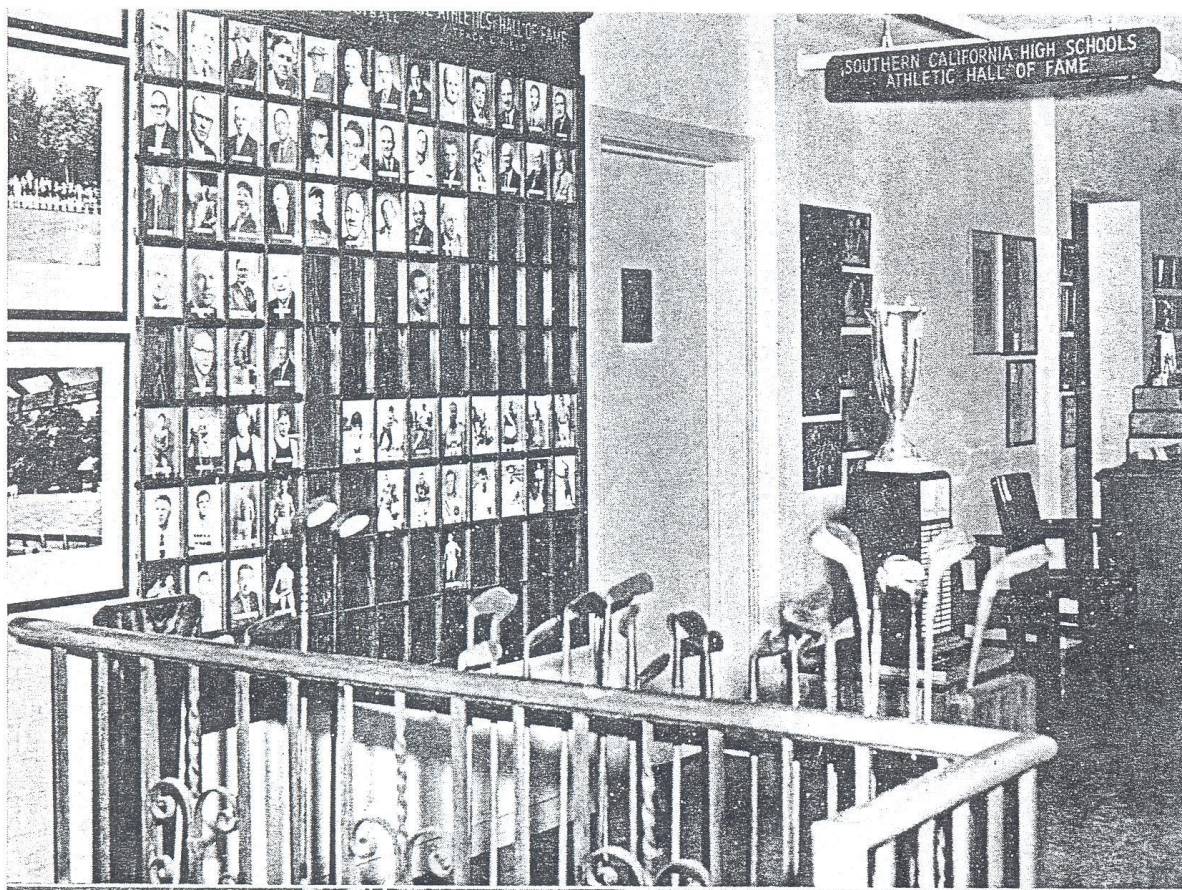
Los Angeles 34, California

Phone Texas 0-3161



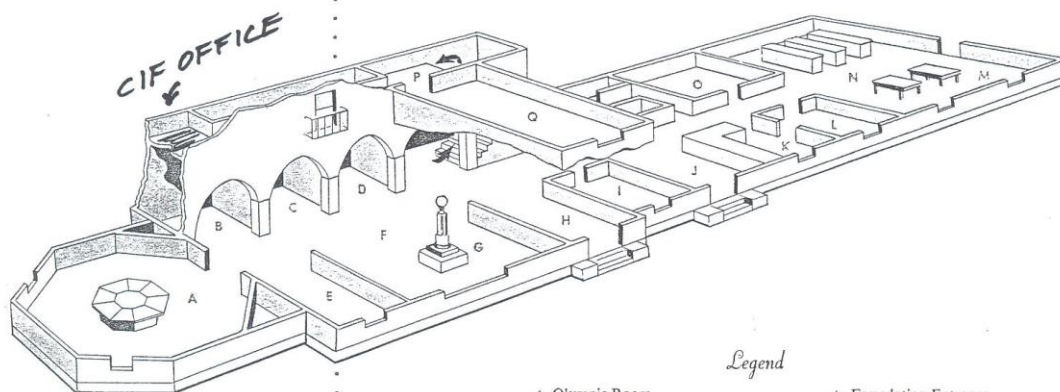
HELMS HALL
Helms Athletic
Foundation

VICTORY IS A WORTHY RESULT FOR WHICH TO STRIVE FAIRLY"



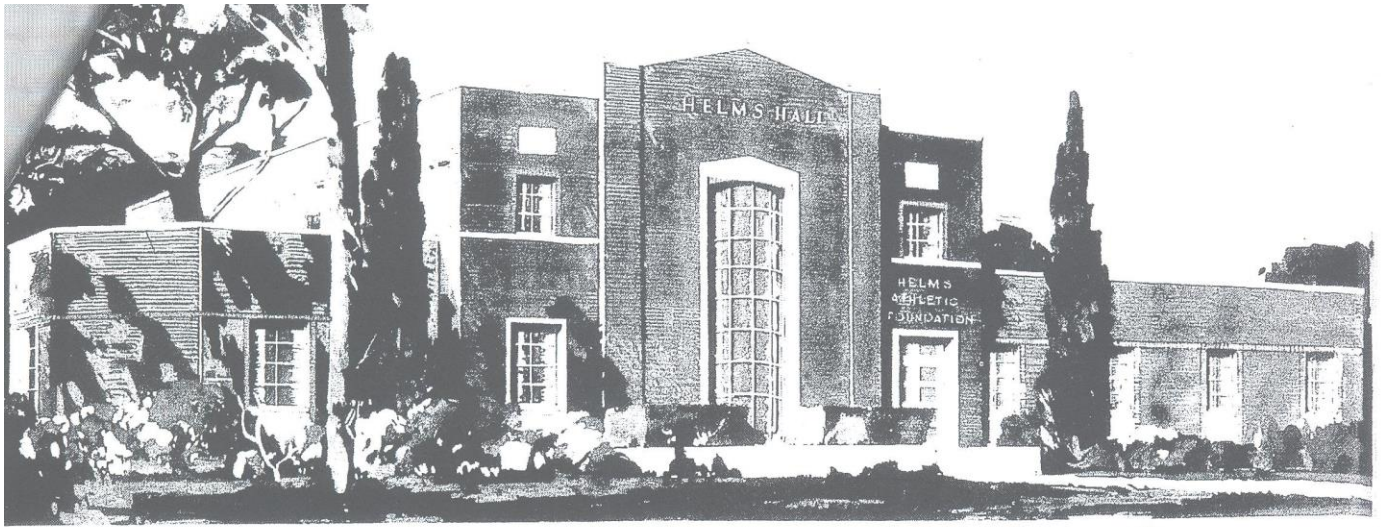
Note the trophy in the right corner of the photo. It is the Paul H. Helms Trophy that was thrown in a trash can when the CIF-SS changed offices. Bruce McIntosh rescued it, sans the top trophy, and it now sits in the CIF-SS History corner.

HELMS HALL... a shrine erected to perpetuate the noteworthy achievements of deserving athletes and athletic teams, and to house the trophies and awards won by the champions of sports... Dedicated to inspire the youth of all lands.



Legend

- | | |
|--------------------------|---|
| A. Olympic Room | J. Foundation Entrance |
| B. Baseball Section | K. Secretary's Office |
| C. Athlete of Month Room | L. Executive Office |
| D. Athlete of Year Room | M. Hall of Fame Panels |
| E. Football Section | N. Library |
| F. Olympic Flag Room | O. Project Room |
| G. Helms World Trophy | P. Second Floor Rooms and Offices |
| H. Main Entrance | Q. Founder's Room and Presidential Displays |
| I. Office | |



California Interscholastic Federation Opens New Offices at Helms Hall

At the invitation of Paul H. Helms, Founder and Sponsor of Helms Athletic Foundation, the California Interscholastic Federation, Southern Section, has established its quarters at Helms Hall, Los Angeles.

Commissioner Seth F. Van Patten moved his C.I.F. offices from South Pasadena to Helms Hall on November 23rd, occupying an attractive second-floor suite.

Helms Hall, the first unit of which was erected in 1948, with a second-unit being completed on November 28th, 1949, is situated in the Western section of Los Angeles, on Venice Boulevard, near Culver City.

Helms Hall houses the executive offices of Helms Athletic Foundation, the famous Helms Hall sports library which is considered to be the most complete in existence, Athletic Hall of Fame chambers, an Olympic Room, spacious lounge, Founder's Room, and trophy halls. Adjoining Helms Hall is a patio auditorium, where special award programs, and sports activities are held.

Cost of Helms Hall, to date, is approximately \$250,000, all of which has been contributed by Mr. Helms. At the present time, a third unit of Helms Hall is now on the calendar, which will cost in excess of \$150,000. The new unit will include a large auditorium, radio and television rooms, a Press Club, and additional Hall of Fame chambers.

Lodged in Helms Hall is the beautiful Helms World Trophy, which is valued at over \$10,000. The Helms World Trophy will serve to honor the foremost athletes of the six continents of the world, since 1896. Engraved upon the Helms World Trophy are the names of the athletes who have been chosen for honors annually, who have represented nations and kingdoms in North and South America, Europe, Asia, Africa, and Australia.

Some of the award projects which have been developed at Helms Hall under the supervision of Helms Athletic Foundation are Southern California Athlete of the Year, Southern California Athlete of the Month, Prep School Hall of Fame, and Halls of Fame for College Football and Basketball, Track & Field, Baseball, Tennis, Golf, Swimming, Automobile Racing and other sports.

Helms Athletic Foundation, which supervises operation of Helms Hall, was organized in 1936 by Paul H. Helms. Since then, Mr. Helms has donated more than a half-million dollars to his philanthropic Foundation sponsorships.

The center of attraction at Helms Hall is possibly the Olympic Room, in which the Olympic Games awards which have been won by many of the world's top athletes are lodged.

Helms Hall is open to the public, without charge, Mondays through Fridays from 9 A.M. until 5 P.M., on Saturdays from 9 A.M. until 1 P.M., and on Monday and Friday evenings from 7 until 9 P.M. The address is 8760 Venice Boulevard, Los Angeles.

PAUL H. HELMS, Founder and Sponsor



CIF SOUTHERN SECTION OFFICE

March 28, 1959 to November, 1965

(6 1/2 years)

Culver City Office

5443 W. Washington Boulevard

Los Angeles 16, California

Phone Webster 1-1423

C. I. F., SOUTHERN SECTION MONTHLY BULLETIN

Volume 22

APRIL, 1959

No. 8



CIF, SOUTHERN SECTION'S NEW HOME

The above photo is an attempt to show the front of the new CIF, Southern Section Office building which is located at 5443 W. Washington Blvd. It is a one story structure with a flat roof and the buildings in the background represent an apartment house on the left and a church on the right. The front entrance to the building is shown with the reflective pool and the landscaping. On the right extreme is the

fence surrounding the patio which is located just off the two private offices. The building is strictly modern and to truly appreciate its design and function you will have to pay us a visit and let us show you through the building. A cordial invitation is extended to all interested persons to drop by any time during working hours.

SOUTHERN SECTION OFFICE MOVES INTO PERMANENT HOME

Since its founding on March 28, 1914, the CIF, SS office has been housed in a multitude of places and during all of that time has never had a home of its own. Exactly 45 years from the day, when a group of educators met in the old YMCA Building in Los Angeles for the purpose of establishing an organization to direct and control interscholastic athletics in the State of California, the Southern Section office moved into its new headquarters on W. Washington Boulevard.

This eye-catching one story structure, built expressly for the CIF, SS by contractor Richard Kalish, under the direct supervision of Architect Maynard Houston, became the Federation's "Home" on March 28, 1959, less than five months after beginning of construction in November, 1958.

It is most interesting to delve into the old Minutes of the SS and learn of the problems connected with the locating of housing for the organization's office. We find that the office has

been sheltered in dingy basement quarters, in surplus school rooms, and even in the homes of the early secretaries. In all of that time, although the quarters were many times inadequate, it was never necessary to pay for heat, light, rent, or janitorial service. Those happy days have now come to an end, because with the completion of our new home will come financial responsibilities.

Our stay at the Helms Athletic Foundation for the past ten years has been a most pleasant one and it is with deep regret that we find it necessary to move. With the increase in our office staff, and the rapid expansion of the Foundation, space was at a premium and it was only fitting and proper that we should move out and allow the Helms Athletic Foundation the full use of their facilities.

We are looking forward to a long and pleasant stay in our new quarters and we are confident that these new facilities will enable us to do a much better job in serving the needs of our more than 300 member schools.

CIF SOUTHERN SECTION OFFICE

November 1965 to October 16, 2002

(37 years)

Cerritos Office

11011 Artesia Boulevard

Artesia, California 90701

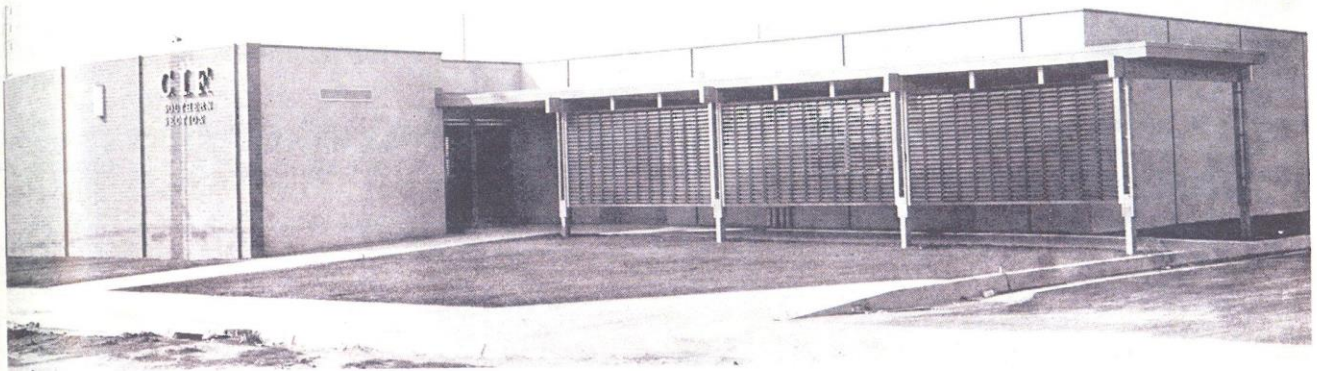
(213) 860-2414

C. I. F., SOUTHERN SECTION MONTHLY BULLETIN

Volume 29

NOVEMBER, 1965

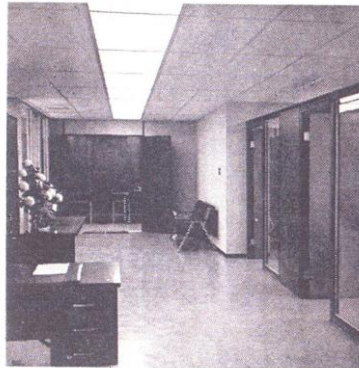
No. 3



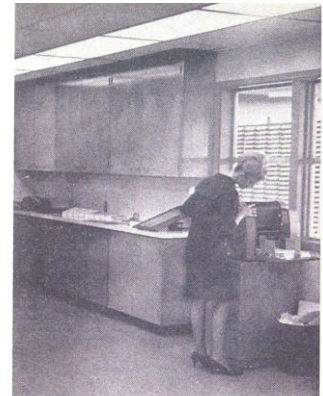
NEW CIF OFFICE—Pictured above is the new CIF, SS, office headquarters on the campus of Gahr High School in Artesia. The building encompasses 3600 square feet, double the size of the old building. Features of the new building are the large work-area and storage sections. See additional



GROUND BREAKING—Robert D. Ashton, chairman of the CIF, SS, Executive Committee, breaks ground to mark the beginning of construction of the new CIF, SS headquarters on the campus of the new Gahr High School in Norwalk. Construction is now underway with occupancy expected in early October. Joining Ashton at the ground breaking ceremonies are (from the left) Dr. Murrell Miller, superintendent of the newly formed Artesia-Bloomfield-Cerritos School District; Vann Furgeson, president of the board of the ABC District; Ken Fagans, commissioner of athletics; Ashton, personnel administrator, Norwalk-La Mirada USD; Willard Redfern, principal, Gahr High School and Charles Hutchinson, assistant superintendent, personnel, ABC District.



OFFICE COMPLEX—New CIF office building now houses full-time staff of seven. Here entrances to individual offices (right) and conference room (background) as seen from the lobby.



WORK ROOM—CIF staff member Mary Zer operates the mimeograph machine in the newly constructed CIF office in Artesia. The work room is more than double the size of the same room in the old building.

An Historical Look....

THE CIF STORY : A Unique Half A Century To Say The Least

Just in case you've been wondering, the archives date back to over half a century!

It was March 28, 1914 when the Southern Section came under the administrative wing of the newly founded California State Interscholastic Federation, although the Southern California area was anything but a latecomer. In fact, high schools in the area had been fielding athletic teams prior to the turn of the century — not to mention the fact that the CIF-SS had spawned a year before the State had formulated its plans for a charter-member document.

Ironically, the Southern Section was the outgrowth of a track and field meet. It was 1913 when a group of high school officials joined forces to conduct a championship meet, thus ushering in the birth of the Southern Section.

The late Seth F. Van Patten, who was elected Track Manager for the Southern Section in 1913 and who is recognized as the founding father of the CIF-SS, served in that post until 1928 when he was officially named Secretary of the organization. He served as Commissioner until his retirement in 1951.

Despite its lengthy history, the Southern Section lists just four Commissioners (the term Secretary dropped), with William W. Russell holding the post from 1951-54, J. Kenneth Fagans being the administrative head from 1954 until his retirement in early 1975, and Thomas E. Byrnes accepting the Commissioner's post in February of 1975.

Probably of more interest has been the "home" of the Southern Section. At the outset, basements, surplus school rooms and even the homes of secretaries served as the official office. South Pasadena High School graciously permitted the use of one of its rooms during the 1930's, with the Oneonta School in South Pasadena serving as the home office from 1942 until 1949.

Still without an official office, the Southern Section moved its supplies to Helms Hall in Culver City in 1949 and remained at that Venice Blvd. site until 1959. It was in February of that year that the Southern Section built its first-ever Administrative Office, the building located on the corners of Carmona and



West Washington in Los Angeles.

With the growth of its membership and shift of population centers, the CIF-SS built its second and current Administrative Office building on Artesia Blvd. in 1965.

The Southern Section, a non-profit corporation, is not only the oldest, but the largest of 10 such sections in the State — its membership at just under 500 schools.

If one were to draw a straight line between the two furthest member schools, it would show a distance in excess of 400 miles! In fact, the Southern Section accounts for over one-third of the entire State's member schools.

But above all else, it's the CIF-SS goal to uphold a strong championship image. An

athlete who participates in the CIF interscholastic sports program of post-season play-offs, such as these tonight, has an opportunity to complement his academic education through association in a well-organized and regulated program of physical fitness.

In addition, he learns the value of good sportsmanship and citizenship, and gains self-reliance and understanding of the necessity of self-discipline and hard work in attaining success.

And hopefully, the CIF-SS will continue to grow in the years to come, as the high school athlete continues to grow stronger and the competition gets even more competitive.

Yes, indeed, it's been a varied and unique half century to say the least!



A view of the CIF offices (upper right picture) which are located on Artesia Blvd. is the center of activity for high school athletic decisions. Administrative Assistant, Margaret Davis works in her office (lower left) while a co-worker is busy getting the days mail ready in the work room, (above).

October 16, 2002 to Present

Los Alamitos Office
10932 Pine Street
Los Alamitos, California 90720
(562) 493-9500
FAX: (562) 493-6266
Web Site: www.cifss.org



BRIEF HISTORY OF THE PINE STREET CIF-SS OFFICE

The ground upon which the current CIF-SS office sits was once inhabited by the Puvu Indians a branch of the Shoshones. Under Spanish rule the Nieto Land Grant covered the area which was divided into smaller ranchos including the Los Alamitos (Little Cottonwoods) Rancho. John Bixby leased much of the land for raising grain and sheep. The Township of Los Alamitos begun around 1880 with the first school was built at what are now Katella and Los Alamitos Boulevards. A large sugar beet refinery was built where Los Alamitos High School currently is located. Los Alamitos became a chartered city on March 1, 1960.

1897 Map of Los Alamitos



Sugar Beet Refinery looking North on Main Street (Reagan)



Early maps indicate the area of the current office was in the main part of Los Alamitos and was laid out for business lots. The first church in Los Alamitos, the Congregational Missionary Society, was a non-denominational Church built in 1897 on the corner of Pine and Church (Katella). There was a rectory behind the church and a garden to grow vegetables where the CIF-SS office is now located. There was also a chicken coop on the site prior to the construction of a United States Post Office in 1962. A large trailer left over from the 1984 Olympics was placed in the front of the post office to handle the walk-up customers. The major part of the building was for the carriers and collection of mail. Individual post boxes were located across the street. The Post office closed in 1995 when the lease ran out. The old post office was subject to graffiti and vandalism. The city bought the building and surrounding property in 1997 for \$515,000 and began to look for a buyer. In late 1998, the city leased the building to the Book Connection, a specialty book store selling old and used books. The lease was for three years at \$2,000 a month. The leasers stated they put close to \$100,000 into



the improvement of the old run down post office building. In 1999, they opened the Awakenings Coffee & Tea House in the main building and an outdoor eating area. The main coffee maker was the son of the owner who was referred to “Mocha Maestro.”

The lease on the Gahr High School campus CIF-SS building, which had been arranged for 50 years at around \$300 a month, was coming to a close. The school district needed the land to build a performing arts center and was going to raise the rent to \$2,000 a month. In addition, the CIF-SS was growing and thinking about adding onto the current office with a 3,000’ two story extension. Retired Assistant Commissioner Bill Clark was hired to begin a search for a new location. Several sites were looked at in Long Beach, but it was felt the Los Alamitos site was close the freeway system and was centrally located for all the member schools of the CIF-SS.

Negotiations for the property began with the City of Los Alamitos. Some of the community objected to CIF-SS buying the property as it would not increase the tax base. In addition, many old timers still felt that the area, known as the Plaza area, could become the main center for the City of Los Alamitos which didn’t have a specific “downtown area.” There was also a problem with the negotiations with violations of the Brown Act (open meetings). Finally, the land and buildings (15,000 square feet) were purchased for \$747,569.23 in 2002. Immediate building improvements (the air conditioning did not work and the City covered those costs including removal of asbestos and reconfiguring the building cost \$443,132 and new fixtures, etc., another \$112,260. The office opened on October 16, 2002.

BOOK CONNECTION & AWAKENINGS COFFEE HOUSE 1999



Photo of the Post Office when it opened in late 1962



Church located on the current corner of Pine and Los Alamitos Boulevard founded in 1897. The rectory and garden behind the church sat on the current property of the CIF-SS.



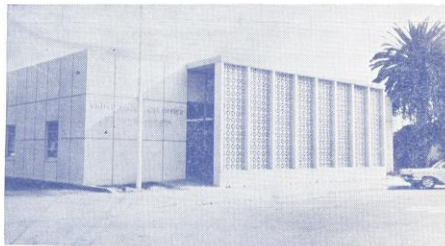
Dedication Ceremonies . . .

**UNITED STATES POST OFFICE
 LOS ALAMITOS, CALIFORNIA**



1889

1963



SATURDAY

JAN. 19, 1963

10932 Pine ☆ Los Alamitos, California

DEDICATION PROGRAM

**UNITED STATES POST OFFICE
 Los Alamitos, California**

☆ ☆

Concert on Hammond Organ.....	James Whetmore Assemblyman
Welcome.....	Blanche I. Dunn Postmaster
Master of Ceremonies.....	Dale Kroesen Publisher
Invocation.....	Robert Fitzgerald Pastor, Community Congregational Church
Pledge of Allegiance.....	Kenneth Hardman Commander, American Legion Post 716
Greetings.....	Honorable James Bell Mayor, City of Los Alamitos
Introduction of Distinguished Guests.....	Master of Ceremonies
Introduction of Postmasters.....	David W. Cromwell President, Orange County Postmasters' Association
Introduction of Staff.....	Postmaster
Musical Selection.....	Mike Goodall Oak Junior High
Presentation of Flag.....	Claire Engel Senator
Reading — "I Am the American Flag".....	Carol Williams
Color Guard and Flag Raising Ceremony.....	Color Guard, NAS
National Anthem.....	Soloist LaDon Hardman
Dedication Address.....	Monte Inskeep Assistant Chief, Organization Service Branch
Benediction.....	Father Desmond Quinn St. Hedwig's Catholic Church

☆ ☆

OPEN HOUSE AND REFRESHMENTS



—Staff Photo by Bob Gelvet

IT TOOK 74 YEARS

Los Alamitos got new post office Saturday afternoon, first "permanent" home in its 74 years of service. Structure at 10932 Pine St. will be scene of diamond jubilee next year. Heading dedication program are, from left: Monte Inskeep of regional postal controller's office at San Francisco, who started in postal service at Cypress in 1938; Mrs. Blanche I. Dunn, postmaster; and Dale Kroesen, Los Alamitos publisher, who was master of ceremonies.

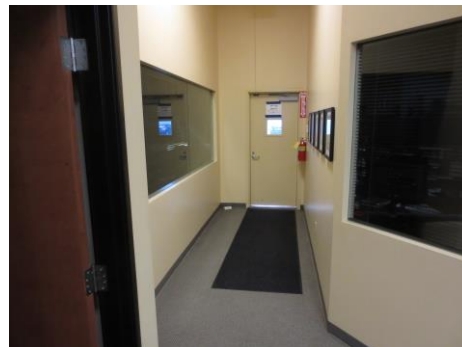
[illegible]



THEN



NOW





Southern Section

Academics / Integrity / Athletics

October 16, 2002

***The members of the Executive Committee
and Staff of the Southern Section Office
dedicate this building to serve the athletes
and member schools of the CIF-Southern Section.***

2002 Executive Committee Members

Paul Breit, President	Dr. John Dahlem, President-Elect		
Clark Stephens, Past President	Susana Arce, Treasurer		
Sharen Caperton	Donn Clickard	Dr. Tom Davis	Bob Dreiling
Stan Ford	Dr. Ken Gunn	Earl Haugen	Kelly Johnson
Jeannine Martineau	Marilyn McDowell	Sr. Cheryl Milner	Tom Peters
Dr. Susan Rainey	Dr. Liza Scruggs	Dr. Gary Smidderks	Terry Speir

Staff

James T. Staunton, Ed.D., Commissioner
Karen Hellyer, Assistant Commissioner
Paul Castillo, Assistant Commissioner
Rob Wigod, Assistant Commissioner
Shirley Frazier, Director
Thom Simmons, Director
John Costello, Director
Pat Chiappetta, Executive Secretary
Letty Wunderley, Assistant
Sharon Hodge, Assistant
Jacqueline Stanley, Assistant
Anita Fopma, Assistant
Greta Rens, Assistant
Deborah Guillory, Receptionist

Photos from Google Earth





