



# PRELIM AND FINALS TIME SCHEDULE

## PRELIM TIME SCHEDULE:

Complete time schedule will be published with seeding information on November 5, 2016

### PRELIMS – Friday, November 11 (Divisions 1 and 4)

9:00 A.M.	Division 1 Boys
	Division 1 Girls
10:40 A.M.	Division 4 Boys
(approx)	Division 4 Girls

### PRELIMS – Saturday, November 12 (Divisions 2, 3, and 5)

7:45 A.M.	Division 2 Boys
	Division 2 Girls
9: 15 A.M (approx)	Division 3 Boys
	Division 3 Girls
10:55 A.M (approx)	Division 5 Boys
	Division 5 Girls

## FINALS TIME SCHEDULE:

### FINALS - Saturday, November 19

7:45	Division 4 Boys
8:05	Division 5 Boys
8:25	Division 4 Girls
8:45	Division 5 Girls
9:05	Division 1 Boys
9:25	Division 2 Girls
9:45	Division 3 Boys
10:05	Division 1 Girls
10:25	Division 2 Boys
10:45	Division 3 Girls

### 2016 Awards Schedule

<b>9:05*</b>	<b>*Awards Schedule revised</b>
9:20*	11/14/16
9:35*	
9:50*	
10:45*	
11:00*	
11:20*	
11:35*	
11:50*	
12:05*	

**AWARD CEREMONY: (FINALS)** (revised 10/25/16) The awards ceremony will take place in the clubhouse after the conclusion of the division race. First and second place teams and the first fifteen finishers in each division should report for each ceremony

**PARTICIPATION CERTIFICATES:** Each school may elect to print a participation certificate for students participating in the CIF Southern Section Cross Country playoffs. These certificates are in a “type-in” PDF format and may be downloaded from: [www.cifsshome.org](http://www.cifsshome.org) under FORMS.

## DIRECTIONS and PARKING

### DIRECTIONS TO RIVERSIDE CITY CROSS COUNTRY COURSE

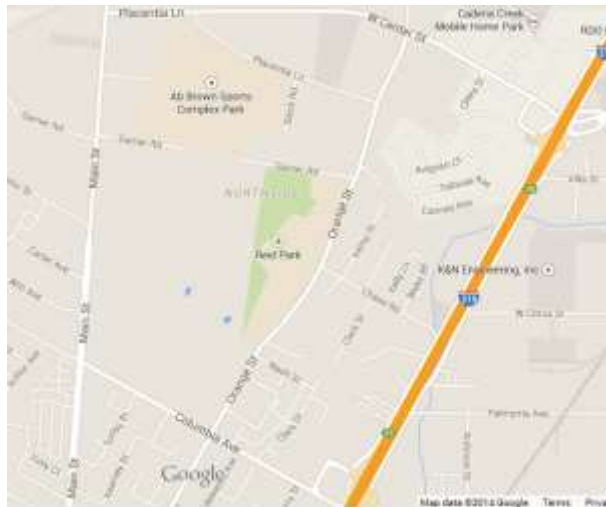
The Riverside City Cross Country Course (formerly the site of the Riverside Golf Club) is located in Riverside on Orange Avenue - **1011 N. Orange Street , Riverside, CA 92501**.

From the 91/215 Freeway, exit Center Street and go West on Center Street to first stop sign (Orange Street). Left on Orange for 1 mile to main entrance parking lot. (Instructions for Bus/Marked School vehicles noted previously). From the 60 Freeway, exit Main Street and go North on Main to Placentia (about 2 miles). Turn right on Placentia-it will turn into Center Street. Take Center Street to Orange Street and turn right. Go about 1 mile to main entrance of parking lot. (Instructions for Bus/Marked School vehicles noted below). **There is a parking fee for all vehicles except school buses and school district marked vehicles - \$10.00 per vehicle.**

### PARKING

**Riverside Cross Country Course (PRELIMS and FINALS): \$10.00 parking fee** in the main parking lot located off Orange Street. Parents and spectators will enter the course through the main entrance off this lot. **Buses** will follow the map below to drop schools off at the Riverside Cross County Course Clubhouse located on Orange Street and then will be instructed to park at the Bourns Engineering lot located at 1200 Columbia Avenue. Coaches driving **marked school vans** will park in an auxiliary lot located off the main parking lot on Orange Street (no parking fee will be charged for school marked vans).

### BUS PARKING INSTRUCTIONS: Riverside Cross Country Course

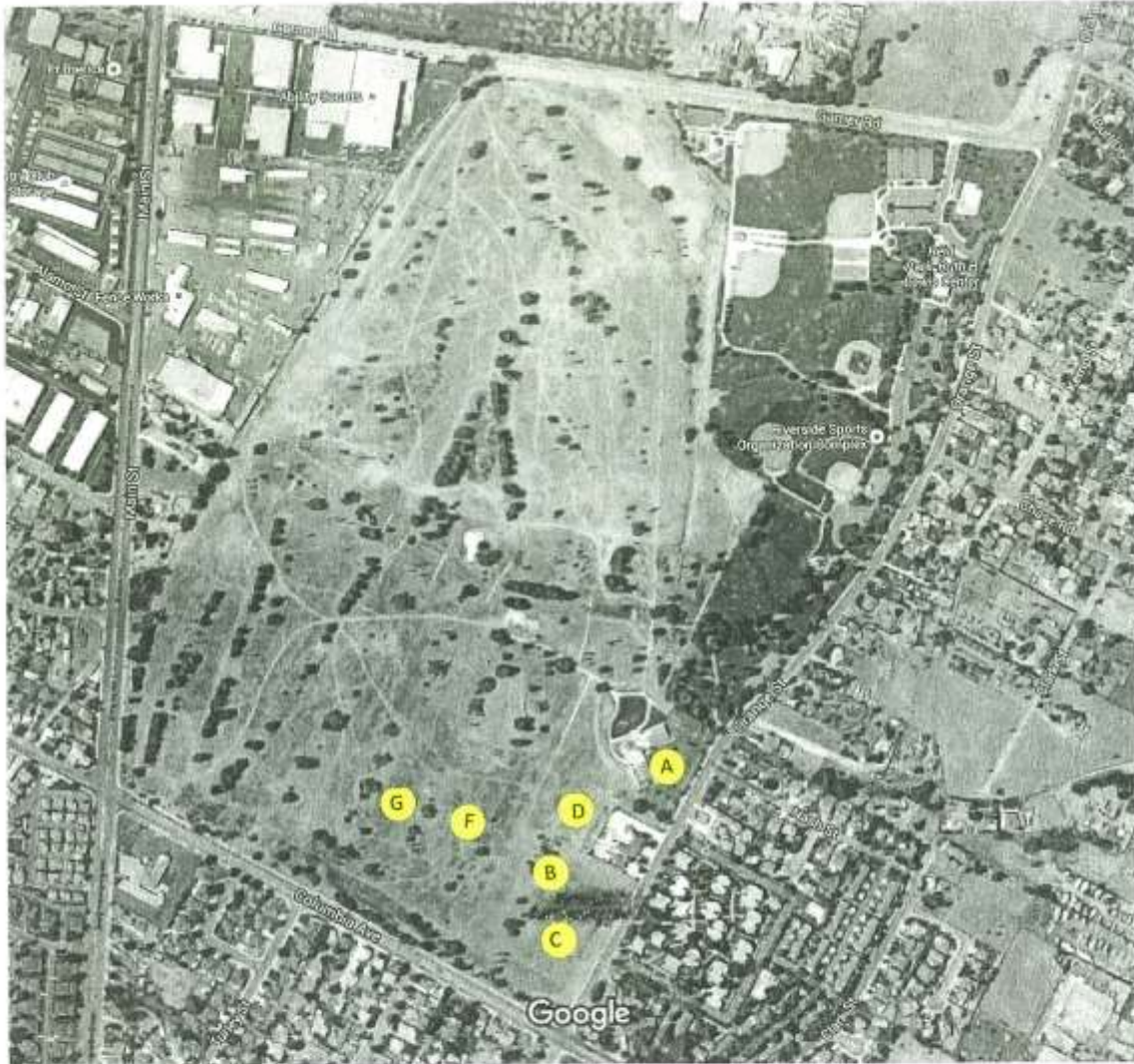


**Please have ALL buses exit on either Main (off the 60 Fwy) or Center (off the 91 Fwy/215 Fwy)**

**If exiting Center St:** Go West on Center to 1<sup>st</sup> stop sign(Orange). Left on Orange for 1 mile to Clubhouse Parking Lot. All buses will discharge their athletes inside the parking lot. The drivers will be given directions to bus parking at that point.

**If exiting Main St:** Go North on Main to Placentia (about 2 miles). Turn right on Placentia-it will turn into Center St. Take Center to Orange St and turn right. Go about 1 mile to Clubhouse parking Lot. All buses will discharge their athletes inside the parking lot. The drivers will be given directions to bus parking at that point.

## Riverside Cross Country Course Facility Map



**A** – School bus drop off then park at Bourns Building located at 1200 Columbia Avenue, School van packet pick-up then park vans at D through Main Parking lot, participant entry gate with ticket

**B**- Ticket Booth, spectator entry and exit

**C** - Main Parking Lot accessed off of Orange Street

**D**- School van, handicap, auxiliary parking accessed through Main Parking Lot, participant entry with ticket

**F**- Team Set-up area for easy-ups

**G**- Team Warm-up area/course

# TICKETS AND CIF-SS COURTESY CARDS

## PURCHASING TICKETS:

**Riverside Cross Country Course (PRELIMS):** All runners and coaches will be admitted through the ATHLETE'S GATE at the Clubhouse located at 1011 Orange Street, Riverside.

All spectators, non-qualifying athletes, extra coaches, managers, pep squad members, bus drivers, faculty members, timers, etc., **MUST PURCHASE** general admission tickets at the ticket booths located off the main parking lot on Orange Street. Coaches using a CIF-SS courtesy card must go to the ticket booth to receive a ticket and will enter through the main gate.

Spectator Gates will open: Friday, November 11, 2016 8:00 am (Divisions 1 and 4)  
Saturday, November 12, 2016 6:45 am (Divisions 2, 3, and 5)

## **Riverside Cross Country Course (FINALS):**

All runners and coaches will be admitted through the participant's gate located at the Clubhouse located at 1011 Orange Street, Riverside.

All spectators, non-qualifying athletes, extra coaches, managers, pep squad members, bus drivers, faculty members, timers, etc., **MUST PURCHASE** general admission tickets at the main entrance located off the main parking lot on Orange Street. Coaches using a CIF-SS courtesy card must go to the ticket booth to receive a ticket and will enter through the main gate.

Spectator Gates will open: Saturday, November 19, 2016 6:45 am

## TICKET PRICES:

GENERAL ADMISSION/HS STUDENT	\$8.00 prelims	\$10.00 finals
HS STUDENTS <b>WITH CURRENT HS PHOTO I.D.</b>	\$5.00 prelims	\$5.00 finals
CHILDREN 5-13 (under five free)	\$5.00 prelims	\$5.00 finals

**NO CHECKS WILL BE ACCEPTED AT THIS EVENT HOWEVER, CREDIT CARDS WILL BE ACCEPTED. STUDENTS MUST SHOW ID TO RECEIVE THE DISCOUNTED STUDENT PRICE.**

## CIF-SS COURTESY CARDS:

CIF-SS courtesy cards, CIF-SS press and CIF-SS photo passes will be honored and must be presented at the "**CIF-SS PASS ticket window**" located at the ticket booth. Recipient will be given ticket that will allow them entrance at the main entrance gate.

Faculty passes, league passes, school passes, district passes, Los Angeles or other section passes, Official's Organization cards, coaches passes and any other passes **WILL NOT BE HONORED.**

**NO DOGS ALLOWED INSIDE FACILITY!**

**USE OF A DRONE IS NOT PERMITTED**