




2016 - 2017
FOOTBALL
PLAYOFF
BULLETIN


SPALDING
TRUE TO THE GAME®

THE OFFICIAL BALL OF THE CIFSS



CONTACT YOUR LOCAL TEAM DEALER TODAY

Trademarks owned by Russell Brands, LLC, or a Russell affiliate. Russell Brands, LLC © 2016

Table of Contents

2016-17 Football Playoff Groupings (By Ranking)	5
2016-17 Football Playoff Groupings (Alphabetical)	8
2016-17 School in Leagues	11
Announcer Guidelines	26
At Large Entries	2
At Large Selection	3
Championship Awards	28
Championship Contests Schedule	24
Coin Flip Schedule	16
Football Entries	2
Game Management Form	21
Mercy Rule	25
Official Ball Program	30
Pairing Dates and Times	15
Playoff Checklist	15
Playoff Requirement (Schedule, Scores, Roster, Photo, Coaches)	20
Playoff Requirements (T.V., Web, Radio Rights, Souvenirs, Ticket, Banner, PA Announcements)	28
Semi Final Round Ticket Order (Thanksgiving Weekend)	19
Ticket Pick Up Information	16
Ticket Return Slip	18
Tie Breaker System	22
Video Exchange	22



Southern Section

Academics • Integrity • Athletics

10932 Pine Street, Los Alamitos CA 90720-2428
(562) 493-9500 ▪ Fax: (562) 493-6266

TO: CIF SOUTHERN SECTION PRINCIPALS
CIF SOUTHERN SECTION ATHLETIC DIRECTORS
CIF SOUTHERN SECTION FOOTBALL COACHES

FROM: GLEN MARTINEZ, ASSISTANT COMMISSIONER

RE: 2016 CIF SOUTHERN SECTION/FORD FOOTBALL CHAMPIONSHIPS

DATE: OCTOBER, 2016

As in the past years, in an effort to control costs, the Football Playoff Handbook will be available on our website at cifss.org on October 24, 2016. It is our intent that the following information will be useful prior to the availability of the handbook.

The 2016 Football Playoffs will be conducted in 13 playoff divisions. Schools have been placed in their divisions based on the new competitive equity format. (refer to Blue Book rule 3219) All divisions will be 16-team brackets.

NUMBER OF ENTRIES: (11-MAN FOOTBALL)

In all divisions leagues with:

- 4 or 5 team leagues - are guaranteed two entries**
- 6 or 8 team leagues - are guaranteed three entries**
- 9 or more -team leagues - are guaranteed four entries.**

(Blue Book Rule 3219.5) Leagues are guaranteed their appropriate number of entries into the Southern Section Championships, per current Southern Section Blue Book Rule 3214, with the exception of football. In football, League Champions will have first priority, followed by 2nd place teams, 3rd place teams and so on from each league. Once the total number of guaranteed entries from each league are submitted, the At-Large Selection process outlined on page 3 of this publication will be used to select at-large teams to fill any byes in the draw, or to eliminate teams from the draw, in order to create a 16-team bracket for each division.

Freelance teams will be placed in appropriate divisions and will be considered for the playoffs along with the other at-large entries in those divisions that have at-large openings. For a freelance school to be considered for the playoffs they must have a record of .500 or better and fill out an at-large form on www.cifsshome.org as their entry.

AT-LARGE ENTRIES:

By action of the CIF-SS Council, byes should be filled in all brackets, for all sports, by either at-large or free lance applicants. This gives your league the opportunity to submit an additional entry for possible consideration into the playoffs. **Please read the enclosed "Filling of Playoff Byes" bulletin carefully**, and if you have any questions, feel free to call us for clarification.

Your League Coordinator needs to be aware of your school's intention. Make sure you contact them to make them aware of your intent to file an At Large Petition. They should also know if you have no interest in consideration. **The cifsshome electronic 11-Man At-Large Entry must be in our office by 11:00 p.m. Friday, November 4, 2016.**

11-MAN FOOTBALL AT LARGE SELECTION

The 11-Man Football At-Large Selection Committee will meet on Saturday, November 5, 2016 in the C.I.F. Southern Section office to select the at-large teams. This committee is comprised of one member from the CIF-SS Executive Committee, an administrator at-large, a representative from the Football Coaches Advisory Committee and one football coach at-large. It is to be understood that no person will serve on the committee whose team is in contention for one of the at-large berths. The following criteria and procedures will accommodate this policy:

(1) Leagues will have the option of entering an at-large team for consideration should they desire. Leagues will utilize the same guideline of designating a No. 1 entry, a No. 2 entry, or No. 3 entry. In the event there is a tie for the at-large team, the league must specify which school will be submitted as the at-large entrant.

(2) All entries, including at-large must be submitted to the CIF-SS office by 11:00 p.m., Friday, November 4, 2016.

At Large teams must have a .500 record or better for their complete schedules to be considered. A tie will count as a ½ win and ½ loss as the criteria for .500 or better record. (A record of 4-4-2 would be considered as qualifying). In the sport of football, in order to alleviate byes, if there are no .500 teams entered or all .500 or better teams have been taken, then the next best record as submitted by leagues will be taken. However, no team under .500 will be placed until all .500 at-large entries have been placed.

(3) Schools who are being submitted as an at-large entry, MUST submit to the CIF-SS office by 11:00 p.m., Friday, November 4, 2016, all data regarding games played during the season.

Under the "Teams" tab in www.cifsshome.org the complete schedule and results should be inputted, and further background information the Selection Committee should be apprised of, in determining the teams which will be selected for the filling of byes.

(4) The Selection Committee, with the full support of the CIF-SS Football Coaches Advisory Committee, will utilize the following criteria in its selection process for at-large teams with each category below having the specific weight listed:

The Selection Committee will also use the following criteria for elimination-teams where the total number of guaranteed entries exceeds the bracket size.

- (a) Head-to-head competition of teams under consideration (4 points)
- (b) Overall strength of the league from which the team is entered based on the end of season rankings (1 point)
- (c) Overall win-loss record (1 point)
- (d) Strength against common opponents (1 point)
- (e) Strength of schedule (2 points, using overall win-loss record of opponents)
- (f) Free lance teams will be part of the pool for the filling of at-large berths

(5) The At-Large Selection Committee will meet in the CIF-SS Office on the Saturday afternoon of the weekend in which the playoff draw is to be finalized. The administrator so designated from the CIF-SS Office for Football shall act as a resource person and chair the meeting.

Leagues are guaranteed their appropriate number of entries into the Southern Section Championships, per current Southern Section Blue Book Rule 3214, with the exception of football. In football, League Champions will have first priority, followed by 2nd place teams, 3rd place teams and so on from each league. Once the total number of guaranteed entries from each league are submitted, the At-Large Selection process outlined in the Football Playoff Bulletin will be used to select at-large teams to fill any byes in the draw, or to eliminate teams from the draw, in order to create a 16-team bracket for each division.

NOTE: (New for 11-Man Football) If two or three automatic entry teams from the same league are tied at the end of league competition, and are in different playoff divisions, they may all carry the same designation into their respective playoff division. For example, if School A and School B tie for their league's championship, and are in different playoff divisions, they can both be designated as League #1 in their respective playoff divisions. However, leagues may not exceed their total allowable guaranteed entries regardless of what playoff division those schools would enter. In this instance, you would let us know in the entry notes that there was a tie within the guaranteed entry.

AT LARGE APPLICATION

Attention Athletic Directors/ Coaches: Please follow the instructions below to enter your school as an At Large Entry for Boys Football. The At Large Application is to be submitted by your school no later than **Friday, November 4, 2016 @ 1100 p.m.**

Log in @ www.cifsshome.org (If you do not have a log in & password as a coach, check with your Athletic Director).

Once you are logged in:

-On the left panel, click on At Large Petition

-Select "11-Man Football" then click "Add"

Please be sure that your Schedule is updated in CIFSSHome as this is where the information for the At Large Petition will be created.

Check out the Help video under the Help tab on the bottom left, "Be CIF Prepared!"

11- MAN FOOTBALL
2016-17 FOOTBALL PLAYOFF GROUPINGS (BY RANKING)

<u>Division 1 - (18)</u>	<u>Division 2 – (18)</u>	<u>Division 3 – (19)</u>	<u>Division 4 – (19)</u>
1. Centennial Corona 2. St. John Bosco 3. Mission Viejo 4. Mater Dei 5. Bishop Amat 6. Vista Murrieta 7. Serra 8. JSerra 9. Lutheran/Orange 10. Servite 11. Poly/LB 12. Loyola 13. Santa Margarita 14. Tesoro 15. Upland 16. Rancho Cucamonga 17. Alemany 18. Chaminade	19. Notre Dame/SO 20. Chino Hills 21. San Clemente 22. Oaks Christian 23. Norco 24. Redlands E.Vly 25. Westlake 26. Citrus Hill 27. St. Bonaventure 28. La Habra 29. Crespi 30. El Toro 31. Camarillo 32. Arroyo Grande 33. Great Oak 34. Valencia/V 35. Hertiage 36. Murrieta Valley	37. Palos Verdes 38. Thousand Oaks 39. Buena Park 40. Edison 41. Rancho Verde 42. Los Alamitos 43. Newbury Park 44. St. Francis 45. Villa Park 46. Hart 47. La Serna 48. Oak Hills 49. Cathedral 50. Serrano 51. Santiago/Corona 52. La Mirada 53. San Juan Hills 54. Paso Robles 55. Atascadero	56. Charter Oak 57. Lompoc 58. Etiwanda 59. Glendora 60. Palm Springs 61. Downey 62. Colony 63. Lakewood 64. Corona del Mar 65. Dominguez 66. Damien 67. Carter 68. Trabuco Hills 69. Valencia/P 70. Cajon 71. Sierra Camupm 72. Chaparral 73. Redondo Union 74. Murrieta Mesa
<u>Division 5 – (22)</u>	<u>Division 6 – (22)</u>	<u>Division 7 – (23)</u>	<u>Division 8 – (25)</u>
75. King, M.L. 76. Moorpark 77. Harvard-Westlake 78. Capistrano Valley 79. Temecula Valley 80. Ventura 81. Sonora 82. St. Joseph/SM 83. Corona 84. Redlands 85. Calabasas 86. Fountain Valley 87. Roosevelt 88. Los Osos 89. Foothill 90. San Jacinto 91. Salesian 92. Bishop Diego 93. Poly/Riverside 94. Troy 95. Paloma Valley 96. La Quinta/LQ	97. West Covina 98. San Marino 99. Yucaipa 100. Bonita 101. West Torrance 102. Mira Costa 103. Paramount 104. Saugus 105. Summit 106. Newport Harbor 107. Palmdale 108. Oxnard 109. Los Altos 110. Paraclete 111. Elsinore 112. Crescenta Valley 113. Canyon/CC 114. Lawndale 115. Nipomo 116. Wilson/LB 117. Simi Valley 118. Pomona	119. Cabrillo/LB 120. Huntington Bch 121. Pacifica/O 122. Diamond Ranch 123. South Hills 124. Royal 125. Canyon/A 126. San Gorgonio 127. El Segundo 128. St. Margaret's 129. Monrovia 130. Ayala 131. Norte Vista 132. Righetti 133. Tustin 134. Warren 135. Golden Valley 136. St. Paul 137. Millikan 138. North Torrance 139. Claremont 140. Fullerton 141. Linfield Chr.	142. Moreno Valley 143. Brea Olinda 144. Grace Brethren 145. Yorba Linda 146. Burroughs/B 147. Burbank 148. San Dimas 149. Don Lugo 150. Chino 151. Temescal Canyon 152. Garden Grove 153. Laguna Hills 154. Kaiser 155. Saddleback Vly Chr. 156. Chaffey 157. Buena 158. Northview 159. Pioneer Vly 160. Jordan 161. El Modena 162. Hemet 163. Sunny Hills 164. Citrus Valley 165. Rio Mesa 166. Vista Del Lago

Division 9 – (29)	Division 10 – (38)	Division 11 – (38)	Division 12 – (46)
167. Palm Desert	196. Tahquitz	234. Culver City	272. Cathedral City
168. Esperanza	197. Rubidoux	235. Bellflower	273. Carpinteria
169. Silverado	198. Pacifica/GG	236. Heritage Chr.	274. Marina
170. Woodbridge	199. Dana Hills	237. Ontario Chr.	275. Schurr
171. La Salle	200. Apple Valley	238. Pioneer	276. La Canada
172. Antelope Vly	201. Nordhoff	239. Coachella Valley	277. Walnut
173. Santa Barbara	202. Inglewood	240. La Sierra	278. El Dorado
174. Notre Dame/R	203. Templeton	241. Eisenhower	279. Montclair
175. Burroughs/R	204. Alta Loma	242. Twentynine Palms	280. Desert
176. West Ranch	205. Brentwood	243. Quartz Hill	281. Rancho Mirage
177. Eastside	206. Barstow	244. Crean Lutheran	282. Banning
178. Aliso Niguel	207. Whittier	245. Highland	283. Patriot
179. Mayfair	208. North, J.W.	246. Channel Islands	284. San Marcos
180. El Rancho	209. University	247. Covina	285. Calvary Chapel/SA
181. Cypress	210. Beaumont	248. Miller, A.B.	286. Arroyo
182. Perris	211. Beckman	249. Valley View	287. Village Chr.
183. South Torrance	212. West Valley	250. Ramona	288. Compton
184. Maranatha	213. Santa Ynez	251. Katella	289. Calvary Murrieta
185. California	214. Viewpoint	252. Xavier Prep	290. Artesia
186. Norwalk	215. Brethren Chr.	253. Oak Park	291. Rim of the World
187. Muir	216. St. Anthony	254. San Bernardino	292. Fillmore
188. Hesperia	217. Mission College Pr	255. Pasadena	293. Colton
189. Kennedy	218. Irvine	256. Cabrillo/L	294. St. Genevieve
190. Valley Chr./C	219. Santa Fe	257. Westminster	295. Adelanto
191. Lynwood	220. Grand Terrance	258. Victor Valley	296. Hawthorne
192. Arrowhead Chr.	221. Gahr	259. Lakeside	297. Big Bear
193. Diamond Bar	222. Leuzinger	260. Montebello	298. Hillcrest
194. Morningside	223. Arlington	261. Arcadia	299. Segerstrom
195. Agoura	224. Aquinas	262. Bell Gardens	300. Ontario
	225. Peninsula	263. Morro Bay	301. Fontana
	226. San Luis Obispo	264. Jurupa Hills	302. Santa Paula
	227. Torrance	265. Bishop Montgomery	303. Desert Hot Springs
	228. Shadow Hills	266. Canyon Springs	304. Baldwin Park
	229. Poly/Pasadena	267. Capistrano Vly Chr.	305. St. Monica
	230. Dos Pueblos	268. Sultana	306. Centennial/Compton
	231. Santa Monica	269. Western	307. Vasquez
	232. Northwood	270. Rancho Alamitos	308. Whittier Chr.
	233. South Pasadena	271. Rosemead	309. Estancia
			310. Saddleback
			311. Los Amigos
			312. Verbum Dei
			313. Bassett
			314. Pacific
			315. Silver Valley
			316. Santa Ana Vly
			317. Santa Maria

Division 13 – (85)	Division 13 Continued
318. Rio Hondo Prep	366. Gabrielino
319. Rancho Chr.	367. Yucca Valley
320. Knight	368. Orange
321. Ocean View	369. St. Bernard
322. Beverly Hills	370. Garey
323. Cantwell Sacred Heart	371. Arroyo valley
324. Webb	372. Savanna
325. Rowland	373. Rialto
326. Glendale	374. Blair
327. Godinez	375. Nuview Bridge
328. Temple City	376. La Quinta/W
329. Cerritos	377. Mountain View
330. Santa Ana	378. Loara
331. Windward	379. Fairmont Prep
332. Bloomington	380. Sierra Vista
333. Desert Mirage	381. Century
334. Santa Clarita Chr.	382. San Gabriel
335. Indio	383. Hamilton
336. Azusa	384. Firebaugh
337. El Monte	385. Gladstone
338. La Puente	386. Mammoth
339. Hueneme	387. Desert Chr./L
340. Mary Star of the Sea	388. Duarte
341. Malibu	389. Don Bosco Tech
342. Western Chr.	390. California Military
343. McAuliffe, Christa	391. Bolsa Grande
344. Campbell Hall	392. Mark Keppel
345. Anaheim	393. Workman
346. Granite Hills	394. Marshall
347. Hoover	395. Riverside Prep
348. Ganesha	396. California School/Deaf (CSDR)
349. Jurupa Valley	397. Santa Rosa Academy
350. Santiago/GG	398. Sherman Indian
351. Costa Mesa	399. Temecula Prep
352. Nogales	400. Trinity Classical Academy
353. Magnolia	401. Upland Christian Academy
354. Glenn	402. Carnegie
355. Lancaster	
356. Boron	
357. Alhambra	
358. South El Monte	
359. Laguna Beach	
360. Littlerock	
361. Wilson/HH	
362. Southlands Chr.	
363. Excelsior Charter	
364. Santa Clara	
365. Indian Springs	

11-MAN FOOTBALL
2016-2017 FOOTBALL PLAYOFF GROUPINGS (ALPHABETICAL)

<u>Division 1</u>	<u>Division 2</u>	<u>Division 3</u>	<u>Division 4</u>
1. Alemany 2. Bishop Amat 3. Centennial/Corona 4. Chaminade 5. JSerra 6. Loyola 7. Lutheran/O 8. Mater Dei 9. Mission Viejo 10. Poly/LB 11. Rcho Cucamonga 12. Santa Margarita 13. Serra 14. Servite 15. St. John Bosco 16. Tesoro 17. Upland 18. Vista Murrieta	19. Arroyo Grande 20. Camarillo 21. Chino Hills 22. Citrus Hill 23. Crespi 24. El Toro 25. Great oak 26. Heritage 27. La Habra 28. Murrieta Valley 29. Norco 30. Notre Dame/SO 31. Oaks Christian 32. Redlands E. Vly 33. San Clemente 34. St. Bonaventure 35. Valencia/V 36. Westlake	37. Atascadero 38. Buena Park 39. Cathedral 40. Edison 41. Hart 42. La Mirada 43. La Serna 44. Los Alamitos 45. Newbury Park 46. Oak Hills 47. Palos Verdes 48. Paso Robles 49. Rancho Verde 50. San Juan Hills 51. Santiago/C 52. Serrano 53. St. Francis 54. Thousand Oaks 55. Villa Park	56. Cajon 57. Carter 58. Chaparral 59. Charter Oak 60. Colony 61. Corona del Mar 62. Damien 63. Dominguez 64. Downey 65. Etiwanda 66. Glendora 67. Lakewood 68. Lompoc 69. Murrieta Mesa 70. Palm Springs 71. Redondo Union 72. Sierra Canyon 73. Trabuco Hills 74. Valencia/P
<u>Division 5</u>	<u>Division 6</u>	<u>Division 7</u>	<u>Division 8</u>
75. Bishop Diego 76. Calabasas 77. Capistrano Valley 78. Corona 79. Foothill 80. Fountain Valley 81. Harvard-Westlake 82. King, M.L. 83. La Quinta/LQ 84. Los Osos 85. Moorpark 86. Paloma Valley 87. Poly/R 88. Redlands 89. Roosevelt 90. Salesian 91. San Jacinto 92. Sonora 93. St. Joseph/SM 94. Temecula Valley 95. Troy 96. Ventura	97. Bonita 98. Canyon/CC 99. Crescenta Valley 100. Elsinore 101. Lawndale 102. Los Altos 103. Mira Costa 104. Newport Harbor 105. Nipomo 106. Oxnard 107. Palmdale 108. Paraclete 109. Paramount 110. Pomona 111. San Marino 112. Saugus 113. Simi Valley 114. Summit 115. West Covina 116. West Torrance 117. Wilson/LB 118. Yucaipa	119. Ayala 120. Cabrillo/LB 121. Canyon/A 122. Claremont 123. Diamond Ranch 124. El Segundo 125. Fullerton 126. Golden Valley 127. Huntington Bch 128. Linfield Chr. 129. Millikan 130. Monrovia 131. Norte Vista 132. North Torrance 133. Pacifica/O 134. Righetti 135. Royal 136. San Gorgonio 137. South Hills 138. St. Margaret's 139. St. Paul 140. Tustin 141. Warren	142. Brea Olinda 143. Buena 144. Burbank 145. Burroughs/B 146. Chaffey 147. Chino 148. Citrus Valley 149. Don Lugo 150. El Modena 151. Garden Grove 152. Grace Brethren 153. Hemet 154. Jordan 155. Kaiser 156. Laguna Hills 157. Moreno valley 158. Northview 159. Pioneer Valley 160. Rio Mesa 161. Saddleback Vly Chr. 162. San Dimas 163. Sunny Hills 164. Temescal Canyon 165. Vista Del Lago 166. Yorba Linda

Division 9	Division 10	Division 11	Division 12
167. Agoura	196. Alta Loma	234. Arcadia	272. Adelanto
168. Aliso Niguel	197. Apple Valley	235. Bell Gardens	273. Arroyo
169. Antelope Valley	198. Aquinas	236. Bellflower	274. Artesia
170. Arrowhead Chr.	199. Arlington	237. Bishop Montgomery	275. Baldwin Park
171. Burroughs/R	200. Barstow	238. Cabrillo/L	276. Banning
172. California	201. Beaumont	239. Canyon Springs	277. Bassett
173. Cypress	202. Beckman	240. Capistrano Vly Chr.	278. Big Bear
174. Diamond Bar	203. Brentwood	241. Channel Islands	279. Calvary Chapel/SA
175. Eastside	204. Brethren Chr.	242. Coachella Valley	280. Calvary Murrieta
176. El Rancho	205. Dana Hills	243. Covina	281. Carpinteria
177. Esperanza	206. Dos Pueblos	244. Crean Lutheran	282. Cathedral City
178. Hesperia	207. Gahr	245. Culver City	283. Centennial/Compton
179. Kennedy	208. Grand Terrace	246. Eisenhower	284. Colton
180. La Salle	209. Inglewood	247. Heritage Chr.	285. Compton
181. Lynwood	210. Irvine	248. Highland	286. Desert
182. Maranatha	211. Leuzinger	249. Jurupa Hills	287. Desert Hot Springs
183. Mayfair	212. Mission College Pr	250. Katella	288. El Dorado
184. Morningside	213. Nordhoff	251. La Sierra;	289. Estancia
185. Muir	214. North, J.W.	252. Lakeside	290. Fillmore
186. Norwalk	215. Northwood	253. Miller, A.B.	291. Fontana
187. Notre Dame/R	216. Pacifica/GG	254. Montebello	292. Hawthorne
188. Palm Desert	217. Peninsula	255. Morro Bay	293. Hillcrest
189. Perris	218. Poly/P	256. Oak Park	294. La Canada
190. Santa Barbara	219. Rubidoux	257. Ontario Chr.	295. Los Amigos
191. Silverado	220. San Luis Obispo	258. Pasadena	296. Marina
192. South Torrance	221. Santa Fe	259. Pioneer	297. Montclair
193. Valley Chr./C	222. Santa Monica	260. Quartz Hill	298. Ontario
194. West Ranch	223. Santa Ynez	261. Ramona	299. Pacific
195. Woodbridge	224. Shadow Hills	262. Rancho Alamitos	300. Patriot
	225. South Pasadena	263. Rosemead	301. Rancho Mirage
	226. St. Anthony	264. San Bernardino	302. Rim of the World
	227. Tahquitz	265. Sultana	303. Saddleback
	228. Templeton	266. Twentynine Palms	304. San Marcos
	229. Torrance	267. Valley View	305. Santa Ana Vly
	230. University	268. Victor Valley	306. Santa Maria
	231. Viewpoint	269. Western	307. Santa Paula
	232. West Valley	270. Westminster	308. Schurr
	233. Whittier	271. Xavier Prep	309. Segerstrom
			310. Silver Valley
			311. St. Genevieve
			312. St. Monica
			313. Vasquez
			314. Verbum Dei
			315. Village Chr.
			316. Walnut
			317. Whittier Chr.

Division 13	Division 13 Continued
318. Alhambra	362. Littlerock
319. Anaheim	363. Loara
320. Arroyo Valley	364. Magnolia
321. Azusa	365. Malibu
322. Beverly Hills	366. Mammoth
323. Blair	367. Mark Keppel
324. Bloomington	368. Marshall
325. Bolsa Grande	369. Mary Star of the Sea
326. Boron	370. McAuliffe, Christa
327. California Military	371. Mountain View
328. California School/Deaf (CSDR)	372. Nogales
329. Campbell Hall	373. Nuview Bridge
330. Cantwell Sacred Heart	374. Ocean View
331. Carnegie	375. Orange
332. Century	376. Rancho Chr.
333. Cerritos	377. Rialto
334. Costa Mesa	378. Rio Hondo Prep
335. Desert Chr./L	379. Riverside Prep
336. Desert Mirage	380. Rowland
337. Don Bosco Tech	381. San Gabriel
338. Duarte	382. Santa Ana
339. El Monte	383. Santa Clara
340. Excelsior Charter	384. Santa Clarita Chr.
341. Fairmont Prep	385. Santa Rosa Academy
342. Firebaugh	386. Santiago/GG
343. Gabrielino	387. Savanna
344. Ganessa	388. Sherman Indian
345. Garey	389. Sierra Vista
346. Gladstone	390. South El Monte
347. Glendale	391. Southland Chr.
348. Glenn	392. St. Bernard
349. Godinez	393. Temecula Prep
350. Granite Hills	394. Temple City
351. Hamilton	395. Trinity Classical
352. Hoover	396. Upland Chr. Academy
353. Hueneme	397. Webb
354. Indian Springs	398. Western Chr.
355. Indio	399. Wilson/HH
356. Jurupa Valley	400. Windward
357. Knight	401. Workman
358. La Puente	402. Yucca Valley
359. La Quinta/W	
360. Laguna Beach	
361. Lancaster	

11-MAN FOOTBALL
2016-2017 SCHOOLS IN LEAGUES

<p>Almont</p> <ul style="list-style-type: none"> • Alhambra • Bell Gardens • Mark Keppel • Montebello • San Gabriel • Schurr <p>Ambassador</p> <ul style="list-style-type: none"> • Aquinas • Arrowhead Chr • Linfield Chr. • Notre Dame/R • Ontario Chr. • Western Chr. <p>Angelus</p> <ul style="list-style-type: none"> • Cathedral • Harvard-Westlake • La Salle • Salesian • St. Francis • St. Paul <p>Arrowhead</p> <ul style="list-style-type: none"> • California School/Deaf CSDR • Carnegie/Riverside • Hamilton • Sherman Indian <p>Baseline</p> <ul style="list-style-type: none"> • Chino Hills • Damien • Etiwanda • Los Osos • Rancho Cucamonga • Upland <p>Bay</p> <ul style="list-style-type: none"> • Inglewood • Mira Costa • Morningside • Palos Verdes • Peninsula • Redondo 	<p>Big VIII</p> <ul style="list-style-type: none"> • Centennial/Corona • Corona • M.L. King • Norco • Roosevelt • Santiago/Corona <p>Camino (Football Only)</p> <ul style="list-style-type: none"> • Calabasas • Moorpark • Newbury Park • Thousand Oaks <p>Canyon (Football Only)</p> <ul style="list-style-type: none"> • Agoura • Royal • Simi Valley • Oak Park <p>Channel</p> <ul style="list-style-type: none"> • Buena • Dos Pueblos • San Marcos • Santa Barbara • Ventura <p>Citrus Belt</p> <ul style="list-style-type: none"> • A.B. Miller • Cajon • Carter • Citrus Valley • Eisenhower • Redlands • Redlands East Valley • Yucaipa <p>Crestview</p> <ul style="list-style-type: none"> • Canyon/A • Foothill • Villa Park • Yorba Linda 	<p>Cross Valley</p> <ul style="list-style-type: none"> • Big Bear • Excelsior Charter • Riverside Prep • Silver Valley <p>De Anza</p> <ul style="list-style-type: none"> • Coachella Valley • Desert Hot Springs • Desert Mirage • Rancho Mirage • Twenty-nine Palms • Yucca Valley <p>Del Rio</p> <ul style="list-style-type: none"> • California • El Rancho • La Serna • Pioneer • Santa Fe • Whittier <p>Desert Mountain</p> <ul style="list-style-type: none"> • Boron • Desert Chr./Lancaster • Mammoth • Vasquez <p>Desert Sky</p> <ul style="list-style-type: none"> • Adelanto • Barstow • Granite Hills • Silverado • Victor Valley <p>Desert Valley</p> <ul style="list-style-type: none"> • Cathedral City • Indio • La Quinta/L.Q. • Palm Desert • Palm Springs • Shadow Hills • Xavier Prep
---------------------------------------------------------------------------------------------------------------------------------------------------------------------------------------------------------------------------------------------------------------------------------------------------------------------------------------------------------------------------------------------------------------------------------------------------------------------------------------------------------------------------------------------------------------------------------------------------------------------------------------------------------------------------------------------------------------------------------------------------------------------------------------------------------------------------------------------------------------------------------------------------------------------------------------------------------------------------------------------------------------------------------------------------------------------------------------------------------------------------------------------------------	----------------------------------------------------------------------------------------------------------------------------------------------------------------------------------------------------------------------------------------------------------------------------------------------------------------------------------------------------------------------------------------------------------------------------------------------------------------------------------------------------------------------------------------------------------------------------------------------------------------------------------------------------------------------------------------------------------------------------------------------------------------------------------------------------------------------------------------------------------------------------------------------------------------------------------------------------------------------------------------------------------------------------------------------------------------------------------	-----------------------------------------------------------------------------------------------------------------------------------------------------------------------------------------------------------------------------------------------------------------------------------------------------------------------------------------------------------------------------------------------------------------------------------------------------------------------------------------------------------------------------------------------------------------------------------------------------------------------------------------------------------------------------------------------------------------------------------------------------------------------------------------------------------------------------------------------------------------------------------------------------------------------------------------------------------------------------------------------------------------------------------------------------------------------------------------------------------------------------------------------

<p>Empire</p> <ul style="list-style-type: none"> • Cypress • Kennedy • Pacifica/GG • Tustin • Valencia/P • Western <p>Foothill</p> <ul style="list-style-type: none"> • Canyon/CC • Golden Valley • Hart • Saugus • Valencia/V • West Ranch <p>Freelance</p> <p>Brethren Christian Crean Lutheran St. Margaret's</p> <p>Freeway</p> <ul style="list-style-type: none"> • Buena Park • Fullerton • La Habra • Sonora • Sunny Hills • Troy <p>Frontier</p> <ul style="list-style-type: none"> • Carpinteria • Fillmore • Malibu • Santa Clara <p>Garden Grove</p> <ul style="list-style-type: none"> • Bolsa Grande • Garden Grove • La Quinta/W • Los Amigos • Rancho Alamitos • Santiago/GG <p>*Leagues/Schools in RED = League Hasn't Reported Football Participation</p>	<p>Gold Coast</p> <ul style="list-style-type: none"> • Brentwood • Campbell Hall • Christa McAuliffe • Paraclete • Sierra Canyon • Viewpoint • Windward <p>Golden</p> <ul style="list-style-type: none"> • Antelope Valley • Eastside • Highland • Knight • Lancaster • Littlerock • Palmdale • Quartz Hill <p>Golden West</p> <ul style="list-style-type: none"> • Loara • Ocean View • Orange • Santa Ana • Segerstrom • Westminster <p>Hacienda</p> <ul style="list-style-type: none"> • Charter Oak • Chino • Diamond Ranch • Los Altos • Walnut • West Covina <p>Inland Valley</p> <ul style="list-style-type: none"> • Arlington • Canyon Springs • J.W. North • Poly/Riverside • Rancho Verde • Valley View 	<p>Los Padres</p> <ul style="list-style-type: none"> • Cabrillo/L • Lompoc • Pioneer Valley • Santa Ynez • St. Joseph/SM <p>Marmonte</p> <ul style="list-style-type: none"> • Camarillo • Oaks Christian • St. Bonaventure • Westlake <p>Miramonte</p> <ul style="list-style-type: none"> • Bassett • Ganessa • Garey • La Puente • Pomona <p>Mission</p> <ul style="list-style-type: none"> • Bishop Alemany • Bishop Amat • Chaminade • Crespi • Loyola • Notre Dame/SO • Serra <p>Mission Valley</p> <ul style="list-style-type: none"> • Arroyo • El Monte • Gabrielino • Marshall Fundamental • Mountain View • Rosemead • South El Monte <p>Mojave River</p> <ul style="list-style-type: none"> • Apple Valley • Burroughs/R • Hesperia • Oak Hills • Serrano • Sultana
---------------------------------------------------------------------------------------------------------------------------------------------------------------------------------------------------------------------------------------------------------------------------------------------------------------------------------------------------------------------------------------------------------------------------------------------------------------------------------------------------------------------------------------------------------------------------------------------------------------------------------------------------------------------------------------------------------------------------------------------------------------------------------------------------------------------------------------------------------------------------------------------------------------------------------------------------------------------------------------------------------------------------------------------------------------------------------------------------------------------------	-----------------------------------------------------------------------------------------------------------------------------------------------------------------------------------------------------------------------------------------------------------------------------------------------------------------------------------------------------------------------------------------------------------------------------------------------------------------------------------------------------------------------------------------------------------------------------------------------------------------------------------------------------------------------------------------------------------------------------------------------------------------------------------------------------------------------------------------------------------------------------------------------------------------------------------------------------------------------------------------------------------------------------------------------------------	-------------------------------------------------------------------------------------------------------------------------------------------------------------------------------------------------------------------------------------------------------------------------------------------------------------------------------------------------------------------------------------------------------------------------------------------------------------------------------------------------------------------------------------------------------------------------------------------------------------------------------------------------------------------------------------------------------------------------------------------------------------------------------------------------------------------------------------------------------------------------------------------------------------------------------------------------------------------------------------------------------------------------------------------------------------------------------------------------------------------------------------

<p>Montview</p> <ul style="list-style-type: none"> • Azusa • Duarte • Gladstone • Nogales • Sierra Vista • Workman <p>Moore</p> <ul style="list-style-type: none"> • Cabrillo/LB • Compton • Jordan • Lakewood • Millikan • Poly/LB • Wilson/LB <p>Mountain Pass</p> <ul style="list-style-type: none"> • Beaumont • Citrus Hill • Hemet • San Jacinto • Tahquitz • West Valley <p>Mountain Valley</p> <ul style="list-style-type: none"> • Banning • Moreno Valley • Pacific • Rubidoux • San Bernardino • Vista Del Lago <p>Mt. Baldy</p> <ul style="list-style-type: none"> • Alta Loma • Chaffey • Colony • Don Lugo • Montclair • Ontario <p>North Hills</p> <ul style="list-style-type: none"> • Brea Olinda • El Dorado • El Modena • Esperanza 	<p>Northern (Football Only)</p> <ul style="list-style-type: none"> • Mission College Prep • Morro Bay • Nipomo • Santa Maria • Templeton <p>Ocean</p> <ul style="list-style-type: none"> • Beverly Hills • Culver City • El Segundo • Hawthorne • Lawndale • Santa Monica <p>Olympic</p> <ul style="list-style-type: none"> • Heritage Chr. • Maranatha • Valley Chr./C • Village Chr. • Whittier Chr. <p>Orange</p> <ul style="list-style-type: none"> • Anaheim • Century • Katella • Magnolia • Santa Ana Valley • Savanna <p>Orange Coast</p> <ul style="list-style-type: none"> • Calvary Chapel/SA • Costa Mesa • Estancia • Godinez • Laguna Beach • Saddleback <p>PAC-5</p> <ul style="list-style-type: none"> • Arroyo Grande • Atascadero • Paso Robles • Righetti • San Luis Obispo 	<p>Pacific</p> <ul style="list-style-type: none"> • Arcadia • Burbank • Burroughs/B • Crescenta Valley • Glendale • Hoover • Muir • Pasadena <p>Pacific Coast</p> <ul style="list-style-type: none"> • Beckman • Corona del Mar • Irvine • Northwood • University • Woodbridge <p>Pacific View</p> <ul style="list-style-type: none"> • Channel Islands • Hueneme • Oxnard • Pacifica/O • Rio Mesa <p>Palomares</p> <ul style="list-style-type: none"> • Ayala • Bonita • Claremont • Diamond Bar • Glendora • South Hills <p>Pioneer</p> <ul style="list-style-type: none"> • Centennial/ Compton • Leuzinger • North Torrance • South Torrance • Torrance • West Torrance <p>Prep</p> <ul style="list-style-type: none"> • Firebaugh • Poly/Pasadena • Rio Hondo Prep • Trinity Classical Academy
-----------------------------------------------------------------------------------------------------------------------------------------------------------------------------------------------------------------------------------------------------------------------------------------------------------------------------------------------------------------------------------------------------------------------------------------------------------------------------------------------------------------------------------------------------------------------------------------------------------------------------------------------------------------------------------------------------------------------------------------------------------------------------------------------------------------------------------------------------------------------------------------------------------------------------------------------------------------------------------------------------------------------------------------------------------------------------------------------------------------------	---------------------------------------------------------------------------------------------------------------------------------------------------------------------------------------------------------------------------------------------------------------------------------------------------------------------------------------------------------------------------------------------------------------------------------------------------------------------------------------------------------------------------------------------------------------------------------------------------------------------------------------------------------------------------------------------------------------------------------------------------------------------------------------------------------------------------------------------------------------------------------------------------------------------------------------------------------------------------------------------------------------------------------------------------------------------------------------------------------------------------------------------	--------------------------------------------------------------------------------------------------------------------------------------------------------------------------------------------------------------------------------------------------------------------------------------------------------------------------------------------------------------------------------------------------------------------------------------------------------------------------------------------------------------------------------------------------------------------------------------------------------------------------------------------------------------------------------------------------------------------------------------------------------------------------------------------------------------------------------------------------------------------------------------------------------------------------------------------------------------------------------------------------------------------------------------------------------------------------------------------------------------------------------------------------------------------

<p>Rio Hondo</p> <ul style="list-style-type: none"> • Blair • La Canada • Monrovia • San Marino • South Pasadena • Temple City <p>River Valley</p> <ul style="list-style-type: none"> • Hillcrest • Jurupa Valley • La Sierra • Norte Vista • Patriot • Ramona <p>San Andreas</p> <ul style="list-style-type: none"> • Arroyo Valley • Indian Springs • Jurupa Hills • Rialto • Rim of the World • San Geronio <p>San Gabriel Valley</p> <ul style="list-style-type: none"> • Dominguez • Downey • Gahr • Lynwood • Paramount • Warren <p>San Joaquin</p> <ul style="list-style-type: none"> • Capistrano Vly Chr • Fairmont Prep • Saddleback Vly Chr. • Santa Clarita Christian • Southlands Chr. • Webb <p>Santa Fe</p> <ul style="list-style-type: none"> • Mary Star of the Sea • St. Anthony • St. Genevieve • St. Monica 	<p>Sea View</p> <ul style="list-style-type: none"> • Aliso Niguel • Capistrano Valley • Dana Hills • El Toro • Laguna Hills <p>South Catholic</p> <ul style="list-style-type: none"> • Bishop Montgomery • Cantwell Sacred Heart • Don Bosco Tech • St. Bernard • Verbum Dei <p>South Coast</p> <ul style="list-style-type: none"> • Mission Viejo • San Clemente • San Juan Hills • Tesoro • Trabuco Hills <p>South Valley</p> <ul style="list-style-type: none"> • Cal Military Institute • Calvary Murrieta • Nuvview Bridge • Rancho Christian • Santa Rosa Academy • Temecula Prep <p>Southwestern</p> <ul style="list-style-type: none"> • Chaparral • Great Oak • Murrieta Mesa • Murrieta Valley • Temecula Valley • Vista Murrieta <p>Suburban</p> <ul style="list-style-type: none"> • Artesia • Bellflower • Cerritos • Glenn • La Mirada • Mayfair • Norwalk 	<p>Sunbelt</p> <ul style="list-style-type: none"> • Elsinore • Heritage • Lakeside • Paloma Valley • Perris • Temescal Canyon <p>Sunkist</p> <ul style="list-style-type: none"> • Bloomington • Colton • Fontana • Grand Terrace • Kaiser • Summit <p>Sunset</p> <ul style="list-style-type: none"> • Edison • Fountain Valley • Huntington Beach • Los Alamitos • Marina • Newport Harbor <p>Tri-Valley</p> <ul style="list-style-type: none"> • Bishop Diego • Grace Brethren • Nordhoff • Santa Paula <p>Trinity -</p> <ul style="list-style-type: none"> • JSerra • Mater Dei • Orange Lutheran • Santa Margarita • Servite • St. John Bosco <p>Valle Vista</p> <ul style="list-style-type: none"> • Baldwin Park • Covina • Northview • Rowland • San Dimas • Wilson/HH
---------------------------------------------------------------------------------------------------------------------------------------------------------------------------------------------------------------------------------------------------------------------------------------------------------------------------------------------------------------------------------------------------------------------------------------------------------------------------------------------------------------------------------------------------------------------------------------------------------------------------------------------------------------------------------------------------------------------------------------------------------------------------------------------------------------------------------------------------------------------------------------------------------------------------------------------------------------------------------------------------------------------------------------------------------------------------------------------------------------------------------------------------------------------------------------	--------------------------------------------------------------------------------------------------------------------------------------------------------------------------------------------------------------------------------------------------------------------------------------------------------------------------------------------------------------------------------------------------------------------------------------------------------------------------------------------------------------------------------------------------------------------------------------------------------------------------------------------------------------------------------------------------------------------------------------------------------------------------------------------------------------------------------------------------------------------------------------------------------------------------------------------------------------------------------------------------------------------------------------------------------------------------------------------------------------------------------------------------------------------------------------------------------------------------------	------------------------------------------------------------------------------------------------------------------------------------------------------------------------------------------------------------------------------------------------------------------------------------------------------------------------------------------------------------------------------------------------------------------------------------------------------------------------------------------------------------------------------------------------------------------------------------------------------------------------------------------------------------------------------------------------------------------------------------------------------------------------------------------------------------------------------------------------------------------------------------------------------------------------------------------------------------------------------------------------------------------------------------------------------------------------------------------------------------------------------------

PAIRING DATES AND TIMES:

Please advise your staff **not** to phone the CIF-SS office prior to the designated time, indicated below, in an effort to secure information on possible first-round opponents or selections. Our office must wait until all regular season games are completed before completing the playoff draw. Pairings will be released according to the schedule below.

→ FOOTBALL COACHES NOTE: All brackets will be released on our website www.cifss.org at the listed times. Coaches will need to make arrangements for film exchange with their opponents an hour after pairings are released. (Please see page 22 On video exchange requirements)

8-MAN FOOTBALL – SUNDAY OCTOBER 30, 2016

At-Large Applicants posted on www.cifss.org after 6:00 p.m.

MONDAY, OCTOBER 31, 2016

10:00 a.m. - 12:00 Noon: Eight-Man Playoff Divisions (C.I.F. Office)

10:00 a.m. – MANDATORY Participant Meeting. (Must send a representative) Must bring DVD Footage of ALL games.

11-MAN FOOTBALL

SUNDAY, NOVEMBER 6, 2016

ALL BRACKETS WILL BE RELEASED AS THE CIFSS OFFICE AND AVAILABLE ONLINE AT www.cifss.org

8:00 a.m. Post At-Large Teams

10:00 a.m. Division 2
Division 5
Division 9

10:30 a.m. Division 3
Division 6
Division 11

11:00-11:30 a.m. Division 1

11:30-12:00 Noon Division 4
Division 7
Division 12

12:00 Noon-12:30 p.m. Division 8
Division 10
Division 13

PLAYOFF CHECK LIST

Item	Completed	Date
1. Input Player Roster into www.cifsshome.org	_____	_____
2. Uploaded team photograph into www.cifsshome.org	_____	_____
3. Input game management data into www.cifsshome.org	_____	_____
4. Made arrangements for ticket pickup	_____	_____
5. Have field reserved in event of home game next round	_____	_____
6. Pre-game planning with opponent	_____	_____

SPECIAL INFORMATION REGARDING COIN FLIPS

In an effort to give schools as much time as possible to prepare for football playoff contests, we will be conducting coin flips for home teams according to the following schedule:

- Second round – Sunday, November 6 – 1:00 p.m. at the CIF Southern Section Office. Results will be posted on www.cifss.org immediately following.
- Semifinal round – Saturday, November 12 – 9:00 a.m.
Office hours – 9:00 a.m. – 10:30 a.m.
- Final round – Saturday, November 19 – 9:00 a.m.
Office hours – 9:00 a.m. – 10:30 a.m.

2016 FOOTBALL TICKET INFORMATION

- 1) All schools must use CIF Southern Section Tickets with FORD Championship logo.
- 2) **Where to pick up your Tickets:** This year we have 9 high school sites as well as our CIF-SS Office where you may pick up playoff tickets for the following games only:
 - 11-Man Round 1 / 8-Man Quarter Finals – **Fri. 11/11**
 - 11-Man Quarter Finals / 8-Man Semi Finals – **Fri. 11/18**
- 3.) **All rounds of tickets will be available at the CIF Southern Section office during regular business hours of Monday through Friday, 7:30 a.m. – 4:00 p.m., Sunday 11/6 in the morning after 11-Man pairings are released**
- 4.) **All Tickets for Semi-Final games on 11/25 may ONLY be picked up at the CIFSS Office OR mailed upon request.** (See page 19)

8:30 am – 11:45 am Monday through Friday
Call Ahead Before Picking Up!

- AYALA HIGH SCHOOL
- BRENTWOOD HIGH SCHOOL
- CULVER CITY HIGH SCHOOL
- JURUPA HILLS HIGH SCHOOL
- RANCHO MIRAGE HIGH SCHOOL
- RIO HONDO PREP HIGH SCHOOL
- SAN MARCOS HIGH SCHOOL
- SANTIAGO/CORONA HIGH SCHOOL
- VALENCIA/VALENCIA HIGH SCHOOL

CIF SOUTHERN SECTION OFFICE – 7:30 am to 4:00 pm Monday through Friday

Remote Site Pick Up Dates

Ticket pick up for remote sites will be:

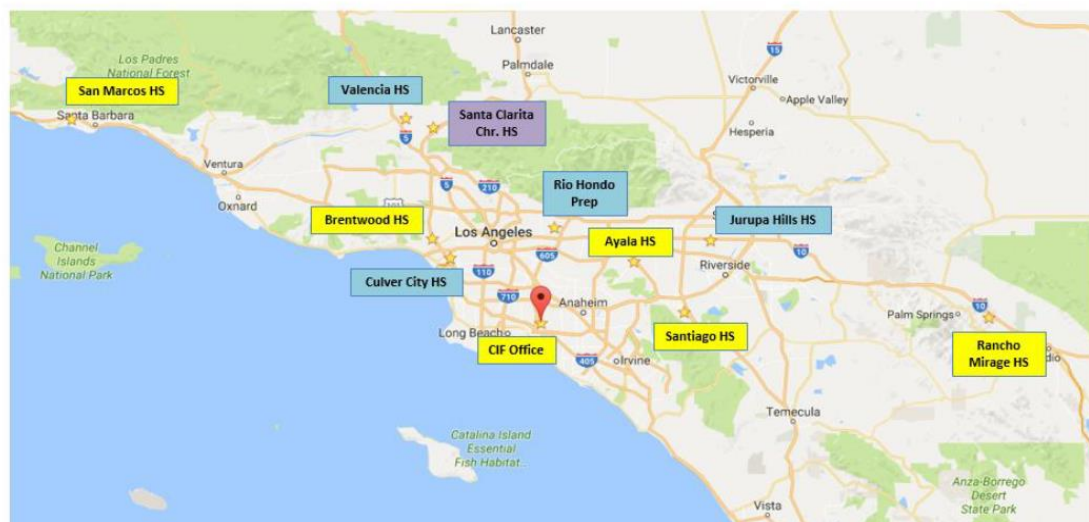
- Monday, November 7th- Thursday, November 10th
- Monday, November 14th- Friday, November 18th

PLEASE NOTE: Most schools are closed Friday, November 11th in observation of Veteran's day. Please plan accordingly.

***PLEASE CALL AHEAD AND ASK FOR YOUR TICKETS TO BE PACKAGED AND READY WHEN YOU ARRIVE DUE TO LIMITED AVAILABILITY.**

Remote Site Contact Info

School	Address	City	State	Zip	Contact	Phone	Email
Ayala, Ruben High School	14255 Peyton Dr.	Chino Hills	CA	91709	Warren Reed	909-627-3584 x 2607	Warren_Reed@chino.k12.ca.us
					Peggy Falls	909-627-3584 x 2608	Peggy_Falls@chino.k12.ca.us
Brentwood High School	100 S. Barrington Place	Los Angeles	CA	90049	Amanda Kelson	310-889-2662	akelson@bwscampus.com
					Riki-Ann Serrins	310-889-2796	Rserrins@bwscampus.com
Culver City High School	4401 Elenda St	Culver City	CA	90230-4182	Tom Salter	310-842-4200 - 6130	tomsalter@ccusd.org
					Leslie Gardner	310-842-4200 - 3512	lesliegardner@ccusd.org
Jurupa Hills High School	10700 Oleander Ave.	Fontana	CA	92337	Kristen Braun	909-357-6300 X16203	braumk@fusd.net
Rancho Mirage High School	31001 Rattler Way	Rancho Mirage	CA	92270	Lisa Thomas	760-202-6455	lthomas@psusd.us
Rio Hondo Prep	5150 Farna Ave.	Arcadia	CA	91066	Ken Drain	626-444-9531 X167	kdtrain44@yahoo.com
San Marcos High School	4750 Hollister Ave.	Santa Barbara	CA	93110-1921	Cheryl Long	805-967-4581 x 5568	clong@smroyals.org
Santiago High School	1395 Foothill Pkwy	Corona	CA	92881-0996	Steve Mitchell	951-739-5600 x 1026	smitchell@cnusd.k12.ca.us
Valencia High School	28701 Dickason Dr.	Valencia	CA	91355	Keith Gallion	661-294-1188 - 430	kgallion@hartdistrict.org



- Football ONLY
- Girl's Volleyball ONLY
- BOTH GVB & FB

- E. **FINANCIAL REPORTING PROCEDURE:** All financial reporting for both visitor and host schools will be submitted via: www.cifsshome.org and click on *Playoff Finances* on the left of the screen.
- F. **TICKET VALUE:** Each CIF-SS ticket issued to schools for usage during the playoffs carries a \$ value. Therefore, **ALL** unused tickets **MUST** be returned to CIF-SS as soon as possible following each game along with a **Ticket Return Slip** (attached below). If tickets are not returned OR a discrepancy is found between what was reported and what was returned, schools **MAY be billed for missing tickets.** All unused Girls Volleyball tickets must be returned absolutely **no later than Wednesday, December 14, 2016.**
- G. **TICKET INFORMATION:**
- The **first 25 tickets (11-Man) and 10 tickets (8-Man)** off a General ticket packet **are your complimentary tickets** & have been automatically accounted for on the financial report.
 - A **different color** of CIF-SS ticket is designated for each round. Any CIF-SS tickets from a previous round **may not be used again!**
 - There are 2 types of tickets: **General (\$10) & Student/Child (\$5)** in packages of 100 (Student/Child – High School **Students** must show current HS I.D at the gate – **Child** refers to ages 5-13)
 - Non Angel Stadium Finals ticket prices will be: **General (\$12) & Student/Child (\$5)**

Ticket Return Slip

(Tear Off and return with unused tickets and a copy of the game Financial Report form (cifsshome.org) – additional copies posted on our website under Girls Volleyball)

DATE	11-MAN ROUND 1 / 8-MAN QUARTERFINALS Fri. November 11 th	11-MAN QUARTER FINALS / 8-MAN SEMI FINALS Fri. November 18 th	11-MAN SEMI FINALS Fri. November 25 th
GENERAL (\$10)	PEWTER	FUSCHIA	FLOURESCENT GREEN
STUDENT/CHILD (\$5)	LT. PEWTER	LT. FUSCHIA	LT. FLOURESCENT GREEN

Sport: **FOOTBALL**

Date of Game: _____

School Returning Tickets: _____

Opponent: _____

THANKSGIVING HOLIDAY

Very Important !

For most of us, Thanksgiving Vacation shortens our school week by two days or more. This creates some additional problems in the distribution and availability of tickets for second round games. Please review this memo so that we may better meet your needs, those of your students and community.

We encourage all schools to make arrangements to pick up tickets on SATURDAY, NOVEMBER 19, when the second round is announced. This is generally handled by a representative from the school, and in fact, can be your varsity football coach, since the vast majority of coaches meet here at the office for the exchange of game videos. Those schools unable to be in our office that Saturday will be mailed their tickets by priority mail. However, it may still take two or three days to reach schools located a great distance from our office, and in turn, the school may have a problem in having tickets available for its students.

With this in mind, we strongly urge you to consider having a representative here at our office on Saturday, November 19, between 9:00 a.m. and 10:30 a.m., or make arrangements with one person from your area to collect the tickets for all schools participating in the playoffs from that general locale. The satellite pairings sites will already have second round tickets available, so the divisions that received their pairings at those satellite sites do not have to send a representative to our office on Saturday, November 19 to collect tickets.

With your cooperation, you will be assured of having tickets available at your school on Monday, November 21, which will assist you in your overall organizational plans.

If we can be of any further assistance to you, please do not hesitate to contact us at the CIF-SS Office.

Please fill out the form below BEFORE YOU SECOND ROUND GAME!

SEMI FINAL ROUND TICKET ORDER
The CIF Southern Section Office will mail ticket to outer lying schools who are 51 miles or more away.

[CLICK HERE to Place Your Football Semi Final Ticket Order](#)



2016-2017 CIFSSHOME

Fall Playoff Requirements & Due Dates

FALL DUE DATES		WINTER DUE DATES		SPRING DUE DATES	
8-man Football	Mon., Oct. 24	Basketball		Baseball	
11-man Football	Mon, Oct. 24	Soccer		Softball	
Girls Tennis	Wed., Oct. 26	Girls Water Polo		Boys Tennis	
Girls Volleyball	Mon., Oct. 24	Wrestling		Boys Volleyball	
Boys Water Polo	Wed., Nov. 2				

VARSIITY TEAM INFORMATION (ROSTER)

Attention Athletic Directors/Coaches: It is very important that you enter your entire Varsity roster into CIFSSHome

Log in to www.cifsshhome.org (If you do not have a log in & password as a coach, check with your Athletic Director).

Once you are logged in:

-On the left panel, Click on the "Teams" tab, select your sport

Here are the instructions for using the sample file.

- Download the sample file **and** delete the "contents only". Copy and paste or type your roster information into the file as the contents and save the file to your computer. You can only upload an excel file (xls) that is the exact same format as the sample file. Columns for information not required for your sport may be left blank, but the **HEADER INFORMATION MUST REMAIN EXACTLY AS THE SAMPLE.**

- Next - click "Choose File", find your file, then click the check box "Resolve Birthdate" and then click "Import Student".

To confirm your roster has been uploaded, your roster will appear in the roster section.

Roster Requirements for each sport

	Name (First/Last)	Birthdate	Year	Eligibility	Number	Height	Weight	Position	Bats	Throws
Baseball	X	X	X	X	X	X		X	X	X
Basketball	X	X	X	X	X	X		X		
Football	X	X	X	X	X	X	X	X		
Soccer	X	X	X	X	X			X		
Softball	X	X	X	X	X			X	X	X
Tennis	X	X	X	X						
Volleyball	X	X	X	X	X	X		X		
Water Polo	X	X	X	X	X	X		X		
Wrestling	X	X	X	X		X	X			

Cross Country, Golf, Tennis, Swimming/Diving & Track and Field **require eligibility for ALL athletes competing prior to their first playoff competition.** Eligibility confirmation must include First Name, Last Name, Birthdate, Year & Eligibility.

VARSIITY COACHES

Attention Athletic Directors/Coaches: It is very important that you enter your Varsity coaches (Head & Assistants) into CIFSSHome (www.cifsshhome.org)

Log in to www.cifsshhome.org (If you do not have a log in & password as a coach, check with your Athletic Director).

Once you are logged in:

-Click on the "Teams" tab on the left navigation bar. Click on the corresponding varsity team .

-Click on "Add/Edit Coaches", select the information to add both your HEAD & ASSISTANT coaches

VARSIITY TEAM PHOTO DUE

Attention Athletic Directors/Coaches: It is very important that your Varsity Team Photo is uploaded to CIFSSHome (www.cifsshhome.org)

Log in to www.cifsshhome.org (If you do not have a log in & password as a coach, check with your Athletic Director).

-On the left panel, click "Teams" tab on the left navigation bar. Click on the corresponding varsity team.

- Under Team Picture, click **Add/Edit picture**, click Browse, find your file and click "Upload Picture" – Team Photo can be no larger than 672 pixels x 480 pixels (7"x5") and 300 dpi

SCHEDULES & SCORES Complete your schedule in CIFSSHome prior to your season as well as update scores following each contest.

Attention Athletic Directors/Coaches: It is very important that you enter your entire season schedule into CIFSSHome (www.cifsshome.org) as well as update the scores immediately following your contests.

Log in to www.cifsshome.org (If you do not have a log in & password as a coach, check with your Athletic Director).

Once you are logged in:

-On the left panel, click on "Teams", select "YOUR SPORT"

-To Add a game, click "Add Game" at the top right and fill out all of the required fields which are marked by a red (*) to complete your schedule.

-To Submit your score, click on the "Teams", select "YOUR SPORT" Scroll through your schedule and click on the green "Post Result" button.

-Make sure that your overall and team records are correct on your team page.

GAME MANAGEMENT FORM:

You can access the Game Management form by logging into www.cifsshome.org. If you don't see the Game Management Form under the "Forms" tab on the left, the Athletic Director can access this tab by going to the User Manager under the "School Settings" tab, clicking on the folder to edit his/her permissions, checking the Game Management Form access, and saving this change. Once your computer has been refreshed, you will see the Game Management option under the "Forms" tab on the left. If your school is assigned to host a contest in any round of the playoffs, it is necessary for you to complete this form, **prior** to the scheduled contest.

VIDEO EXCHANGE:

There shall be a mandatory exchange of four game videotapes between the competing schools. Each coach will have his choice of any four of his opponent's game videotapes which may include the most recent game. These original copies of videotapes shall be unedited and shall include all plays as originally videotaped. In addition to the mandatory exchange, it shall be permissible for either coach to secure from other sources, any game videotape of his opponent that he may desire to view for the purpose of preparing for his next playoff game. If a school entering the playoffs has not videotaped any of its games, it should communicate that fact to the Commissioner, prior to the beginning of the playoffs.

It is mandatory that coaches exchange game film electronically or bring their videotapes with them to a mutually agreed upon site on the day the initial pairings are announced. All subsequent exchanges will take place at a mutually agreed upon location by Noon, the day after each playoff game. The coaches shall return the tapes to one another the night of their playoff game.

Any violation of the mandatory videotape exchange rule (refusal to cooperate) should be reported at once to the CIF-SS office. Such violation may subject a team to disqualification from the playoffs.

Suggested Guidelines for Video Taping

- A. Taping should be from a height of 30' or higher.
- B. Video tape should include the entire contest.
- C. Video taping should start before the snap/kick and continue until the play is over. The camera should not continue to run when the play is dead.
- D. Picture should be clear and numbers of players readable.
- E. Picture should include enough players on both teams to recognize offensive and defensive formations. The camera should follow its own team during kick plays.

TIE-BREAKER SYSTEM

The "25-Yard Tie-Breaker System" is authorized for use in the Southern Section for playoffs as follows:

- 1. Respective leagues have the option of adopting the plan for use
- 2. If adopted, all ties within league must be resolved with the "25-Yard Tie-Breaker System"
- 3. If adopted, the plan may be used for the V, JV or Frosh/Soph levels, or any combination of
- 4. By mutual consent, the plan may be used for non-league contests
- 5. The "25-Yard Tie-Breaker System" will be used for all CIF-SS playoff contests
- 6. May not be used beyond the last allowable playing date to determine entry into the playoffs

TIE GAMES

The twenty-five yard line tiebreaker system will be used in all divisions and all games, **(including finals)**, of the CIF Southern Section football playoffs, when games end in regulation time with the score tied. Although the ball will be placed on the 25-yard line for tiebreakers, we will adopt the National Federation 10-yard tiebreaker rules, with the exception that teams will be able to make first downs. Because of concerns regarding inconsistency **WE WILL NOT BE USING NCAA RULES**. Complete details for the 10-yard line tiebreaker are listed on pages 83 and 84 of the 2016 National Federation Official High School Football Rules. This will apply to all playoff games including the championship games.

HOW THE TIE-BREAKER WORKS

If the score at the conclusion of regulation play is tied, there will be a timeout. The captains of the two squads will meet at midfield, with the officials, for a flip of the coin. The winner of the toss will have the option to defend a goal or to determine possession.

Then, each team will have the opportunity to score from the 25-yard line and the team which outscores the other in the “overtime” session will be the winner, following the rules of football.

For example, the team on offense first will have one series of downs in which to score a touchdown (and try to kick for a one-point conversion or a run-pass for a two-point conversion) or kick a field goal. The other team will have one series of downs in which to equal, or surpass, the points scored by the first team. If the second team on offense does not equal or surpass the first team on offense, the first team on offense wins. If the second team scores more points than the first team, the second team wins. If the second team scores an equal number of points, the whole procedure is repeated until a winner is determined.

If either team has a pass intercepted, or fumbles and loses possession, the ball will be blown dead immediately, its series of downs comes to an end, regardless of what down (No. 1, No. 2, No. 3, or No. 4) the interception or fumble occurs.

If the score remains tied after each team has been given one series of downs in an overtime period, then the procedure shall be repeated with other overtime periods until a game winner is determined. In this case, there shall be an intermission of two minutes. At the subsequent meeting of teams captains, the loser of the overtime coin toss will be given first choice of the options. If additional overtime periods are required, then first options will be alternated with no coin toss.

CHAMPIONSHIP CONTESTS SCHEDULE

Friday, December 2, 2016 at 7:30 p.m.

To Be Determined

Saturday, December 3, 2016 at 7:30 p.m., except for the Angel Stadium contests

Division 1 – Angel Stadium, see below

To Be Determined

This schedule is made to alleviate the conflict of all championship games being played on the same day. It is hoped that advanced planning will assist and accommodate students, as well as respective communities involved. The Division 1 Championship Final will be played at Angel Stadium of Anaheim, according to the following schedule:

- Division 1 – Saturday, December 3, Time 7:30 p.m..

SEMIFINAL CONTESTS:

All divisions will play their semifinal contests on Friday night, November 25.

GAME BALL:

Please be advised that the Spalding football has been designated as the official ball for all playoff games. The Southern Section office, along with Spalding, will be providing schools with footballs for the championship games only.

STATE REGIONAL FOOTBALL GAMES

On Friday December 9, 2016 and Saturday, December 10, 2016 there will be a Northern and Southern State Regional Football Games.

STATE CHAMPIONSHIP BOWL GAMES

On Friday, December 16, 2016 and Saturday, December 17, 2016 there will be five State Championship Bowl Games played at the Sacramento State and various sites under the management of the C.I.F. State Office. For information on these contests, go to the C.I.F. State website at www.cifstate.org.

Mercy Rule

A mercy rule will be in effect for all football contests in the C.I.F. Southern Section, which includes pre-season games, league games and playoff games, including Championship Finals. This means that if one team has a lead of 35 points or more at the end of three quarters, there will be a running clock for the 4th quarter until the end of the contest. If schools wish to invoke a running clock prior to the start of the 4th quarter, they can do so by mutual agreement of both schools. I have attached the relevant rule to this memo, so you can see the details.

This item has been approved for statewide adoption, for both regular and post-season contests. This is in accordance with NFHS Football Rules 3-1-2 and 3-1-3.

1. Prior to the 4th Quarter, by mutual agreement of the opposing coaches and the referee, a *“running clock”* may be used if the point differential between the two teams reaches 35 or more;
2. If at the start of the 4th Quarter or at any time during the 4th Quarter, the point differential is 35 or more points, a running clock shall be used for the remainder of the contest;
3. Once the *“running clock”* is in effect during the 4th Quarter, it shall remain in effect for the balance of the contest, even if the team that is behind subsequently scores to make the deficit less than 35 points;
4. The *“running clock”* will be administered as follows:
 - A. The game clock will start with the snap or legal touch of a free kick on the first play following the establishment of the pertinent point differential, and continue to run uninterrupted when:
 - A 1st down is awarded to either team, including following a change of possession;
 - The ball or runner is out-of-bounds;
 - A legal or illegal forward pass is incomplete;
 - A play results in a touchback;
 - An inadvertent whistle occurs;
 - During all penalty enforcements.
 - B. The game clock shall be stopped for:
 - A score (including touchdown: try; field goal; safety);
 - The free kick following a fair catch or awarded fair catch;
 - A charged team time-out;
 - A coach-referee conference;
 - An official’s time-out (injury; equipment; 1st down measurement; other, as required);
 - C. Following a stoppage for any reason in B. above, the game clock will start when the ball is next:
 - Marked ready-for-play; or
 - Legally touched on the free kick following a score, a fair catch or awarded fair catch

FOOTBALL PUBLIC ADDRESS ANNOUNCER GUIDELINES

The following information is provided for the benefit of the public address announcer at your home playoff games: this capsule summary was developed by the late John McDonough and has been found to be very useful to our member schools.

PRE-GAME PREPARATION

1. Go to the official's dressing room or see the officials on the field. Get the proper pronunciation of their names and the positions they will work.
2. Go over the referee's signals with him and ask for any instructions he might have. It is up to you to interpret his signals to the crowd. If you have a person on the sidelines relaying information to you, explain this to the officials, so they can forward information about unusual rulings to you.
3. Go to each team and be sure you have the correct numbers and names of the players.
4. Be sure you have the proper starting line-up for each team. Coordinate the announcing of the starting line ups with any other pre-game activities (playing of the National Anthem) so that the game will start on time.
5. Check the accuracy of any information about the visiting team you plan on using before the game, or at halftime, with someone from that team. You should have done this for your own team during the week.
6. Always start your program by welcoming the crowd and introducing yourself. Example: "Good evening, ladies and gentlemen, welcome to Memorial Stadium, this is Earl Richard, your game announcer."
7. Give the line-ups at a moderate pace – not too fast, but especially not too slow. Start with the left and go across the line, then the running backs, receivers, and quarterback.
8. After you give the line-ups, give the names of the officials in this order – Referee, Umpire, Head Linesman, Field Judge, Back Judge.
9. Give the winner of the toss and the options the captains chose.
10. If the national Anthem is used, invite the crowd to sing. For example: "Ladies and Gentlemen, would you please rise and join our director Al Rhienke and the Eagle Band in singing our National Anthem."

SPORTSMANSHIP ANNOUNCEMENT

LADIES AND GENTLEMEN, CIF SOUTHERN SECTION PLAYOFF CONTESTS ARE CONDUCTED UNDER THE STRICTEST CODE OF GOOD SPORTSMANSHIP...THE OFFICIALS ARE NEUTRAL MEN, REPRESENTING THE COMMISSIONER, AND ARE SELECTED BECAUSE OF DEMONSTRATED ABILITY...SPECTATORS ARE ENCOURAGED TO SUPPORT THEIR OWN TEAM, AND ARE REQUESTED TO DISPLAY PROPER SPORTSMANSHIP WITH RESPECT TO THE OPPOSING SCHOOL AND THE OFFICIALS...THE CIF SOUTHERN SECTION THANKS YOU FOR YOUR SUPPORT OF HIGH SCHOOL ATHLETICS...

CHAIN CREW:

Personnel assigned to the chain crew, responsible for marking downs and distances on the field, shall be responsible adults at all CIF-SS football playoff games.

GAME SUGGESTIONS

1. Remember, you are NOT a radio announcer and should not give a play-by-play account of the game. This is an insult to the intelligence of the spectators. In a normal game you will be speaking about 25 percent of the time and be QUIET about 75 percent of the time. The crowd came to see the game, not to hear your opinions about it.
2. Give the down and distance before each play. Simply say, "Third and eight on the Homestead 42."
3. When the ball is snapped, do not say, "Jones has the ball and is going around left end." Again, you are insulting the intelligence of the spectators. Merely give his name – "Jones is the ball carrier."
4. When the play is over, give the name of the man, or men, who made the tackle, and set up the down and distance again.
5. After a long run, pass, or kick, give the total yardage, but make no comment. Such comments as "What a beautiful run" are in bad taste. The crowd can see that it was a good run and as a PA announcer you must be 100 percent impartial.
6. NEVER try to outguess the officials. If you think you see a foul, do not mention it. The chances are you will be wrong. If one of the officials throws a yellow foul marker, simply say, "There is a flag on the play." Then wait – do not try to explain the foul. When the referee gives his signal, interpret it to the crowd. Get a copy of the rulebook or a program, which has the signals. If it is an unusual play, the arrangements you made prior to the game will get this information to you to pass on to the spectators.
7. Never use the names of officials during the game. You should read their names prior to the game. Do not say, "The foul was called by Head Linesman Jones" or "Referee Smith is explaining the foul to the Captain Brown".
8. Never comment on the fouls that are called, or the work of the officials, whether you think it is good or bad. This is a good way to start a riot.
9. Never comment on the sportsmanship, or play, of either team, or either coach. This, too, is a good way to start a riot.
10. Never designate the player who committed a foul. You probably will be wrong anyway, and this type of announcement tends to make the game get out of hand.
11. If a player is injured, give his name. You are not a doctor, so do not try to diagnose his injuries. If you get a later report on the player's condition, give it with no comment. Never try to explain how a player was injured. This can be misconstrued by the crowd as an unsportsmanlike act on the part of an opponent and cause an unfortunate situation.
12. If the crowd starts to boo the visiting team, or the officials, to an extreme degree, say, "Ladies and Gentlemen, these people are our guests tonight, let's treat them as such."
13. A few minutes before the end of the game, preferably during a time out, thank the people for coming, announce convenient routes for leaving the stadium and remind them to drive carefully on the way home.

In summary, the public address announcer just covers the facts of the game, as impartially and objectively as possible. You should not give opinions of your own because the spectators are present and should be free to form their own opinions. A radio announcer gives his opinions because the listener is seeing the game through his description, but you are a public address announcer, and this is a totally different art.



CIF SOUTHERN SECTION PLAYOFF/CHAMPIONSHIP PLAYOFF REQUIREMENTS - ALL TEAMS AND HOST SITES 2016-17



ALL TEAMS - During season/Prior to playoffs:

Rosters & Scores:

- Complete schedules are to be submitted to CIFSSHOME prior to each season.
- Update scores following every contest via MaxPreps>CIFSSHOME or direct to CIFSSHOME. Additional directions on accessing CIFSSHOME are included in this document.

TV/Web/Radio Rights:

Any video broadcast on TV or webcast of a CIF-SS event (hosted by CIF-SS or involving two CIF-SS schools outside the section) require a contract and rights fee through the CIF-SS office prior to the contest. The only 'exceptions' are:
A) A school self-produces a regular season webcast that is exclusively shown on either the school's official web site or on the NFHS Network web site.
B) During the regular season, a school or district produces a delayed until 11pm TV broadcast exclusively airing on the school or school district owned cable TV channel.

Third party web sites, such as iHigh, cube.com and others, require contracts and rights fees. Violation of this policy will result in the loss of one or more playoff host rights. This Blue Book rule has been in effect since 2007. All regular season rights fees collected are distributed to the 'host' schools in June.

During the regular season, schools may individually contract their own audio only broadcasts on web or radio. During playoffs, all audio only broadcasts require a rights fee and contract through the CIF-SS office.

'Official' Championship Souvenirs:

The exclusive vendor for CIF Southern Section Championships souvenirs (t-shirts, scarfs, pins, beanies, hats, etc...) is our long-time partner *CIF Tshirts*. These are the official items sold each year per sport. You are likely familiar with their annual shirts at the finals and in your playoff bulletins. You can order team and individual items through them at www.ciftshirts.com.

ALL TEAMS - Playoff requirements of all teams:

Official Ball Required:

Only the approved official ball in each ball sport may be played by either school during CIF-SS playoff contests. Violation of this rule will result in loss of your next home playoff game. The current Official Ball list for each sport is included and available at www.cifss.org in the 'Officials' drop down. This policy has been in effect since 2002.

Gatorade Only:

Only Gatorade jugs, cups, bottles, ice chests may be used or visible during any CIF-SS playoff contest. (No Powerade, Body Armor, etc). The only acceptable alternative is a plain-wrap or Igloo labeled products. This rule does not apply to the actual liquid distributed to athletes. This policy has been in effect since 1995.

TV/Web/Radio Rights:

For all playoff rounds in all sports, a contract and rights fee is required for any TV, webcast or radio broadcast.

CIF-SS on Souvenirs:

The 'CIF Southern Section', 'CIF-SS', 'Southern Section' and 'CIF' marks and logos are registered trademarks with the State of California. Schools may only use the CIF Southern Section marks on rings, patches, banners, apparel and other souvenirs by doing business with a CIF-SS licensed vendor. Schools creating items with CIF-SS registered marks from a non-licensed vendor will face sanction and/or will be required to purchase any unsold shirts/items at the Championship Final if similar non-licensed items appear at the contest. A list of the currently licensed vendors for these products is included and regularly updated on www.cifss.org.

Please note: The use of only "CIF" is strictly prohibited per the State CIF registered trademark. We are the "CIF Southern Section", not just the CIF. Only those teams in State regionals, bowl games and individual sport finals actually qualify to use CIF without Southern Section attached. Any such use must be approved in advance by the CIF State office.

Host Site Requirements:

Playoff Tickets:

It is mandatory to sell tickets for admission to all CIF-SS **basketball, football and volleyball** playoffs and championship contests. Use of the CIF-SS provided tickets is desired, if possible logistically, for audit, cost and sponsorship reasons. A Ticket Board(s) is included. Refer to the Ticket Handlers and Financial Clerks memo included with your tickets for additional information.

CIF-SS/FORD Banner:

It is a requirement of each host school (including off-site) that the CIF-SS/Ford Championships banner be displayed at every playoff home game in football and the gymnasium sports post football season (or on the electronic signage where schools/venues do not display banners).

PA Announcements:

As host of a CIF-SS playoff contest, the CIF-SS announcements take precedence over the host school's messaging and must be read in entirety at each playoff contest. Home schools are the host of a CIF-SS event in the playoffs. For contractual requirements, please read all the provided PA's each contest.

Media Credential Access:

Accredited working media should be given admission to all playoff games by showing their CIF-SS Press or Photo credential.



**CIF SOUTHERN SECTION PLAYOFF/CHAMPIONSHIP
ADDITIONAL/CUSTOM POST SEASON AWARDS
2016-17**

As of 7/1/16



PARTICIPATION CERTIFICATES: Each member of a team participating in the CIF-SS playoffs can receive a Participation Certificate. These certificates will be downloaded and printed solely by your school. The certificate is in a 'Type-In' format and may be downloaded from the CIFSSHOME website under FORMS.

NEED ADDITIONAL AWARDS: Feel free to order additional directly.

Medals and Plaques: If your team won or was a runner-up in a CIF-SS championship and you need to purchase any additional champion/runner-up plaques and runner-up medals contact **All American Trophy by contacting Paul Purdum at (323) 725-1962.**

Team "Champions" Patches: Schools may order additional CIF-SS Champion patches (Octagon Red or Football shaped) may be 'exclusively' ordered through **JL Custom Jackets and Patches at www.jlcustomjackets.com, (951) 867-3200, or email lindseyjlcustomjackets.com.**

"CIF-SS Champions" shirts: Additional Champions shirts, those given during the post-game ceremony to athletes after winning team championships, may be exclusively ordered through our vendor. Contact **Kristy Moore @ Kustom Imprints – (714) 771-5768 ext. 103 or email kristy@kustomimprints.com.**

CUSTOM AWARDS/ RINGS/BANNERS/APPAREL SOUVENIRS USING CIF-SS:

Schools often seek to create custom shirts, patches, gym banners and championship rings that include both the school and CIF-SS marks/logos/names. Example: 'ACME BOYS BASKETBALL 2015 CIF-SS CHAMPIONS'. Schools may create these items using CIF-SS marks only through a CIF-SS licensed vendor.

CIF-SS 'registered' trademark: The "CIF Southern Section", "CIF-SS", "Southern Section" and "CIF" marks and logos are registered trademarks with the State of California. Schools may only use the CIF Southern Section marks on rings, patches, banners, apparel and other souvenirs by doing business with a CIF-SS licensed vendor. Schools creating items with CIF-SS registered marks from a non-licensed vendor will face sanction and/or will be required to purchase any unsold shirts/items at the Championship final if similar non-licensed items appear at the contest. A list of the currently licensed vendors for these products is included and regularly updated on www.cifss.org.

Please note: The use of only "CIF" is strictly prohibited per the State CIF registered trademarks. Only those teams in State regionals, bowl games and individual sport finals actually qualify to use CIF without Southern Section attached. Any such use must be approved in advance by the CIF State office.

CIF-SS licensed vendors are added throughout the year. For the current list, visit www.cifss.org/store/licensed-vendors/

Championship Patches (circle shape) Playoffs or Prelims, Finals Patches (shape of a shield) for participation in Cross Country, Track & Field or Swimming Finals, Masters Patches (oval shaped) for participation in a Masters Track & Field or Wrestling event and Wrestling Dual Meet (rectangle shaped) are sold "ON-SITE" by the CIF-SS vendor. Additional patches post event can be ordered through any of the licensed CIF-SS patch vendors:

- **Custom Banners/Shirts/Souvenirs** Your school may now create custom items that include the CIF-SS mark or logo (championship banner, champions t-shirts, banners for your gym, etc...) through a licensed CIF-SS vendor (and their specialty).

CIF-SS licensed vendors are added throughout the year. For the current list, visit www.cifss.org/store/licensed-vendors/

- **Rings**

Balfour	http://www.balfour.com/athletes/championship-rings/
Herff Jones	www.herffjones.com
J. Lewis Small	www.jlewissmall.com
Jostens	www.jostens.com
National Recognition Products	www.nrprings.com/championship-rings
Signature Style Jewelry	www.signaturesstylejewelry.com

PROTECT YOUR SCHOOL TRADEMARKS: The CIF State Office and CIF Southern Section strongly suggests you double-check the status of **your school** licensed/registered marks and logos now. Some schools have permanently lost control of others selling their merchandise with no royalty or approvals because the proper State of California licensing/registering process had not previously occurred or been enforced.

For additional vendors licensing information, please contact CIF Southern Section Marketing Director John Costello at johnc@cifss.org or 562-493-9500.



Updated 7/1/16

THIS LIST IS EFFECTIVE FOR 2016-17

RE: OFFICIAL BALL PROGRAM – MANDATORY USE IN PLAYOFFS

Official Ball per sport:

- Baseball: **Rawlings CIF-SS** Must be CIFSS stamped ball; not an alternative Rawlings ball
Rawlings RCIF-SS Must be CIFSS stamped ball; not an alternative Rawlings ball
- Boys Basketball: **Spalding TF1000 NFHS Classic NFHS**
Spalding TF1000 Legacy NFHS
- Girls Basketball: **Spalding TF1000 NFHS Classic 28.5 NFHS**
Spalding TF1000 Legacy 28.5 NFHS
- Football: **Spalding ball with NFHS**; any Spalding model with NFHS stamp
- Soccer: **Spalding TF-SC5 NFHS** for both boys and girls use.
Spalding TF-SC3 NFHS for both boys and girls use.
Spalding TF5000 NFHS for both boys and girls use.
- Softball: **Dudley CFP12Y NFHS**
- Tennis: **Wilson Tennis Ball**; NFHS stamp not required
- Volleyball: **Spalding with NFHS stamp: TF-VB5, TF-VB3**
- Boys Water Polo: **KAP7 model 105 with NFHS stamp**
- Girls Water Polo: **KAP7 model 104 with NFHS stamp**

All playoff ball adoptions agreements with the CIF Southern Section run through June 30, 2021 except for tennis (June 2017).

Mandatory Playoff Use Requirement:

The mandatory “official” ball rule for all playoff rounds, excluding golf. The rule applies throughout the conduct of **all** CIF-SS **playoff** contests.

Playoff Ball Use Rule Enforcement:

Should a school fail to provide the correct game ball, the game will always be played. Teams/schools failing to utilize the correct official ball in CIF-SS playoffs will be reported by officials to CIF-SS and will not be allowed to host their next available home playoff game. Penalty does carry over to the next season if not enforceable this season due to elimination.

Note: NFHS stamp is required in all sports *except in golf and tennis*.

OFFICIAL CIFSS FOOTBALL CHAMPIONSHIPS T-SHIRTS



CHAMPIONSHIP PIN



SPORTS PATCH



ORDERED BY		SPORTS	Indicate Qty. of Ea.					TOTAL
			S	M	L	XL	XXL	
Individual or School (Please print or type)		FOOTBALL						
Address (No PO Boxes)		SPORTS PATCH (INDICATE SPORT)						
City and State		CHAMPIONSHIP PIN						
Zip Code								
Phone								
Please make checks payable to: CIF T-SHIRTS		Total No. of Shirts X \$16.00 = _____ Total No. of Patches x \$16.00 = _____ Total No. of Pins x \$6.00 = _____ SUBTOTAL: Sales Tax 8% = _____ Postage and Handling = _____ TOTAL						
Please mail your check and this form to: CIF T-SHIRTS PO BOX 56377 Riverside, CA 92517 (951) 789 - 5858		METHOD OF PAYMENT						
POSTAGE AND HANDLING		(Check One) <input type="checkbox"/> Check <input type="checkbox"/> Visa <input type="checkbox"/> MasterCard						
Orders under \$20.00 add \$6.00		_____ _____ _____ _____ _____						
Orders up to \$50.00 add \$8.00		Security Code						
Orders of \$50.00 to \$200.00 add \$10.00		Expiration Date						
Orders over \$200.00, add \$12.00		Signature						
Orders may be faxed with your Credit Card Number FAX #: (951) 789 - 6164								
Visit us at our website: www.CIFtshirts.com								



PROUDLY SUPPORTING
SO CAL
HIGH SCHOOL ATHLETES



SoCalFordDealers.com



PREP FOX SPORTS ZONE

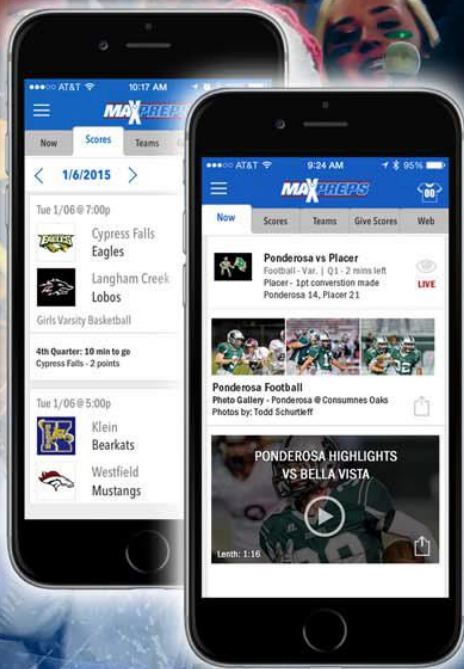
STREAMING ON



PREPZONE
4/C | FULL PAGE | WITH BLEED
TRIM: 8.5" W X 11" H
BLEED: 9"W X 11.5" H
PDF/X-1a:2001

Prepared by
TERRY HINES & ASSOCIATES
(818) 562-9433

1
1571-6
JULY 20, 2016 4:09 PM
FS West Prime Ticket Prepzone_2



Get the most current & complete high school sports information with the MaxPreps app!



Download MaxPreps TODAY!



**Athletic Directors and Coaches,
To obtain your team's access code please email
coachsupport@maxpreps.com or call 800.329.7324x1**



Stay Connected.
facebook.com/maxpreps



Stay Connected.
twitter.com/maxpreps



Stay Connected.
youtube.com/MaxPrepsSports

**THIS IS THE
BIRTHPLACE
OF TEAM**



TEAM ON™

RUSSELL ATHLETIC IS THE PROUD SPONSOR OF
CIF SOUTHERN SECTION





FEW CAN BE MARINES. EVEN FEWER CAN LEAD THEM.

Each school year, the NROTC Marine Option Program prepares select college students for a lifetime of leadership and academic achievement. By making college more accessible through scholarships, this program



will allow you to devote your time to excelling in your studies. It offers a wide range of financial benefits, including full tuition coverage, compensation for books and fees, and a monthly stipend.

MARINES
THE FEW. THE PROUD.®

MARINEOFFICER.COM | 1.800.MARINES

PROTEIN FOR RECOVERY



PROTEIN STRUCTURES

Protein structures in the body are constantly **turning over, breaking down and rebuilding** with new amino acids from the diet.



EXERCISE

Exercise **accelerates this process** and promotes the creation of new muscle proteins, a process that is most effective when the athlete eats protein to deliver new amino acids.



RECOVERY

Consuming protein to start the recovery process **as soon as possible** after practice and competition helps to **rebuild muscle tissue** as well as promote training adaptations.



TYPES OF PROTEIN

Consume **high-quality, complete protein sources** that are **rapidly absorbed** and **rich in leucine**.

WHEY AND MILK PROTEIN ARE GREAT CHOICES



WHEY AND MILK PROTEIN

- meet all the criteria
- have been shown to be effective for recovery



LEUCINE

- one of the amino acid building blocks for new muscle
- acts as a signal for the muscle to start the process of assembling new muscle proteins



signifies when protein should be consumed



EXAMPLE PROTEIN CONSUMPTION CYCLE

To get the most out of their workout, athletes should consume protein **regularly throughout the day**.

RECOMMENDED AMOUNT

MORE ISN'T BETTER.

Research shows that

~20 g of protein

is the right amount to stimulate post-exercise muscle protein synthesis for most athletes.

If you want to get specific for your athlete, calculate **0.25 g/kg**.



GATORADE SPORTS SCIENCE INSTITUTE

CARBOHYDRATE: PREMIUM FUEL FOR ATHLETES

WHAT FOODS ARE CARBOHYDRATE?

Bagels, bread, pretzels, crackers, pasta, rice, potatoes, beans, vegetables, fruit, fruit juice, pancakes, waffles, cereal, granola bars, sports drinks, sports chews

WHAT FOODS AREN'T CARBOHYDRATE?

Meat, chicken, fish, eggs, bacon, tofu, nuts, peanut butter

HOW MUCH CARBOHYDRATE SHOULD I EAT EVERY DAY WHEN I'M TRAINING REGULARLY?

Eat some with every meal and snack. Make sure about 2/3 of each meal is carbohydrate.

1/3 CARBOHYDRATE

1/3 PROTEIN

1/3 CARBOHYDRATE



PERFORMANCE CARBOHYDRATE TIMELINE

If you're hungry or want to start getting your during exercise fuel, eat a small amount of carbohydrate before you start

Include carbs in your recovery snack

HELPS IMPROVE PERFORMANCE & RECOVERY

Eat a meal focusing on carbs several hours before game/practice time

Eat 30-60 g each hour of training or competition



TOTAL CARBOHYDRATE 25 G 25 G 35 G 56 G 60 G

For example, during a basketball game eat a pack of chews at halftime and drink a 20 oz. bottle of Gatorade throughout the game. Or drink a 32 oz. bottle (or larger squeeze bottle) of Gatorade throughout the game, sipping at every timeout and halftime.

The information in this document is grounded in sports nutrition science, translated for athletes.

FUELING ATHLETIC PERFORMANCE



The California School Employees Association is honored to partner with the CIF Southern Section in this important venture.

Our missions are similar. Whether through interscholastic sporting events, academic activities or building the communities that support our public schools, CSEA members are determined to enhance the lives of all California students.

AFL-CIO

essential work | extraordinary workers



CLASSIFIED SCHOOL EMPLOYEES





JL CUSTOM JACKETS

OFFICIAL LICENSED PATCH AND JACKET MANUFACTURER



VARSITY JACKET SPECIAL

\$245.00

WOOL BODY WITH LEATHER
SLEEVES AND POCKETS

VARSITY LETTER SEWN
ON FRONT

MAKE AND SEW ON UP TO
3 SPORT EMBLEMS

EMBROIDER FIRST NAME,
SCHOOL NAME, MASCOT
NAME AND 1 SPORT
ONTO THE FRONT

CREATE AND SEW ON A
CUSTOM GRADUATING YEAR



STANDARD GIRLS PACKAGE:

\$ 230.00

ALL WOOL BODY AND SLEEVES
WITH A WOOL HOOD

You can design and purchase
your own custom patches
on our website.

To Order Call:

(951) 867-3200

or visit us on the web:

www.jlcustomjackets.com

7161 Old 215 Frontage Road, Moreno Valley, CA

Fax (951) 867-3277



• PRICES ARE SUBJECT TO CHANGE WITHOUT NOTICE •

Best Tire Value PROMISE[®]

WITH EVERY PASSENGER & LIGHT TRUCK TIRE PURCHASE

- ✓ Peace of Mind Tire Protection
- ✓ Lifetime Tire & Mileage Care

*Les Schwab Tire Centers is proud to support the
California Interscholastic Federation Section Championships.*



Doing the right thing matters.[®]

www.LesSchwab.com



OVER 450 STORES THROUGHOUT THE WEST!

TIRES • BRAKES • SHOCKS • ALIGNMENTS • WHEELS • SUSPENSIONS • BATTERIES



CIF SOUTHERN SECTION PARTNERS

Proudly Supporting Southern California's Student-Athletes



SOUTHERN CALIFORNIA FORD DEALERS

Title Sponsor & Official Automobile of the CIF Southern Section - FORD Championships



**Official Ball
of the CIF-SS**



**Official Partner
of the CIF-SS**



**Official Partner
of the CIF-SS**



WEST

**Official Home of the
CIF-SS Championships**



**Official Source for
CIF-SS Scores & Stats**



**Official Apparel
of the CIF-SS**



**Official Sports Fuel Provider
of the CIF-SS**



**Official Water Polo
Ball of the CIF-SS**



**Official Partner
of the CIF**



**Official Baseball Supplier
of the CIF-SS**



**Supporting Partner
of the CIF-SS**



**Official Patch Provider
of the CIF-SS**



**Supporting Partner
of the CIF-SS**



**Supporting Partner
of the CIF**



**Supporter of
CIF-SS Tennis**



**Supporting Partner
of CIF-SS Golf**



**Supporter of
CIF-SS Girl's Golf**



**Official Tennis Partner
of the CIF-SS**



**Official Badminton
Supplier of the CIF-SS**